

WELL Chaco 2306-20M #208H	FIELD NM Sandoval County NAD27	STRUCTURE Sec 20-23N-6W
-------------------------------------	--	-----------------------------------

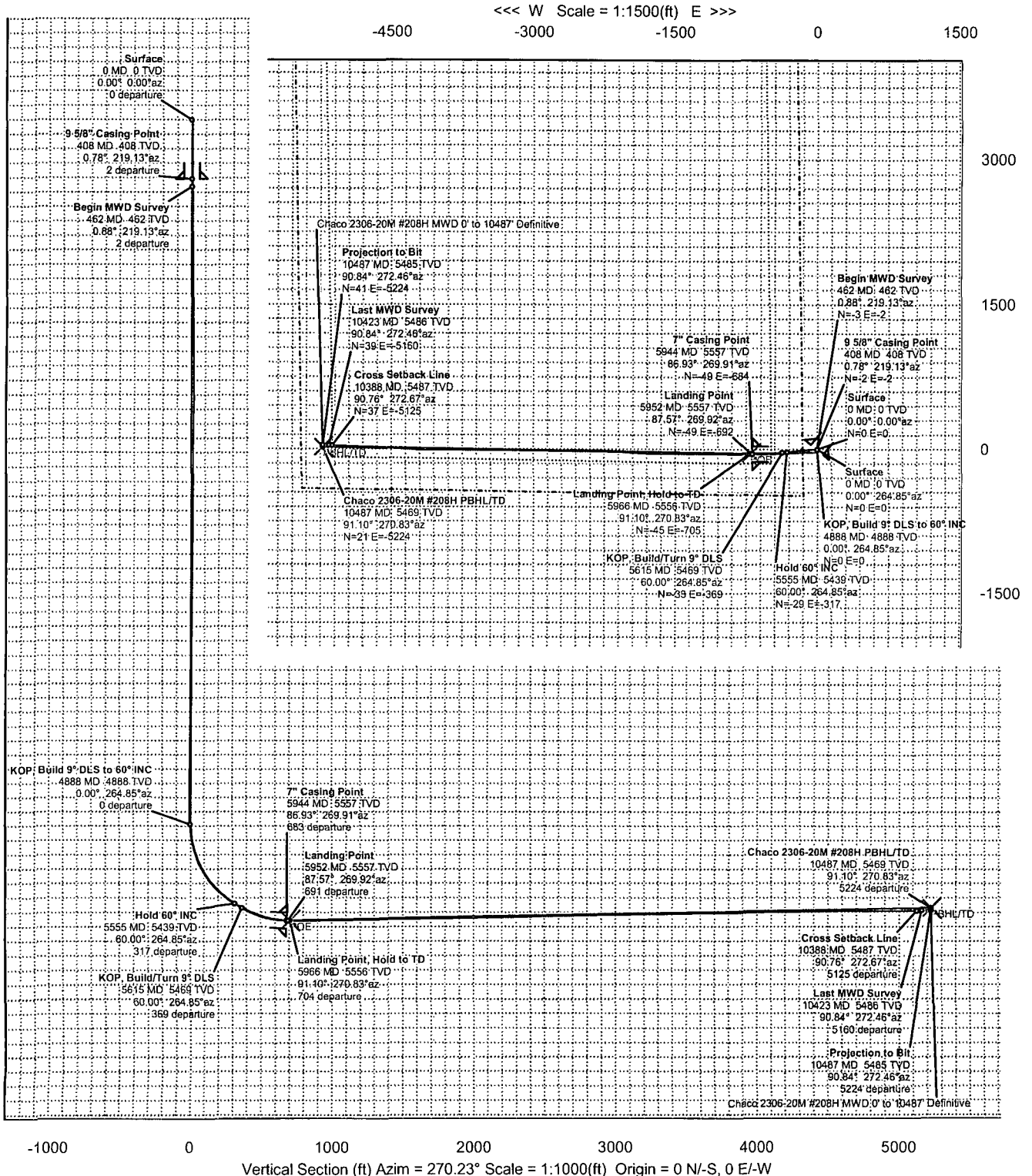
Magnetic Parameters Model: BIGM 2013 Dip: 63.008° Mag Dec: 8.492°	Date: August 21, 2013 FS: 50188 4NT	Surface Location Lat: N 36 12 18.540 Lon: W 107 29 56.798	NAD27 New Mexico State Plane, Central Zone, US Feet Northing: 1896257.41 RUS Easting: 131476.76 RUS Grid Conv: -0.738° Scale Fact: 1.0006541	Miscellaneous Sht: Chaco 2306-20M #208H Plan: R2 mbr 29Oct13	TVD Ref: RKB(705ft above MSL) Srv Date: August 21, 2013
--	--	---	--	--	--

PVA



True North
Tot Corr (M->T) 9.4917°
Mag Dec (9.492°)
Grid Conv (-0.738°)

CONFIDENTIAL



TVD Scale = 1:1000(ft)

<<< S Scale = 1:1500(ft) N >>>



Chaco 2306-20M #208H MWD 0' to 10487' Definitive Survey Geodetic Report

(Def Survey)



Report Date: December 03, 2013 - 10:00 AM
Client: WPX Energy
Field: NM Sandoval County NAD27
Structure / Slot: WPX Sec 20-23N-6W (Chaco 2306-20M #208H) / Chaco 2306-20M #208H
Well: Chaco 2306-20M #208H
Borehole: Original Hole
UWI / API#: Unknown / Unknown
Survey Name: Chaco 2306-20M #208H MWD 0' to 10487' Definitive
Survey Date: November 19, 2013
Tort / AMD / DDI / ERD Ratio: 159.479 * / 5279.591 ft / 6.201 / 0.950
Coordinate Reference System: NAD27 New Mexico State Plane, Central Zone, US Feet
Location Lat / Long: N 36° 12' 18.54000", W 107° 29' 56.79600"
Location Grid N/E Y/X: N 1896257.413 ftUS, E 131476.765 ftUS
CRS Grid Convergence Angle: -0.7379 *
Grid Scale Factor: 1.00005541

Survey / DLS Computation: Minimum Curvature / Lubinski
Vertical Section Azimuth: 270.230 ° (True North)
Vertical Section Origin: 0.000 ft, 0.000 ft
TVD Reference Datum: RKB
TVD Reference Elevation: 7051.000 ft above MSL
Seabed / Ground Elevation: 7037.000 ft above MSL
Magnetic Declination: 9.465 *
Total Gravity Field Strength: 998.4793mgn (9.80665 Based)
Total Magnetic Field Strength: 50159.271 nT
Magnetic Dip Angle: 63.001 *
Declination Date: November 19, 2013
Magnetic Declination Model: BGGM 2013
North Reference: True North
Grid Convergence Used: 0.0000 *
Total Corr Mag North->True North: 9.4651 *
Local Coord Referenced To: Well Head

Comments	MD (ft)	Incl (°)	Azim True (°)	TVD (ft)	VSEC (ft)	NS (ft)	EW (ft)	DLS (*100ft)	Northing (ftUS)	Easting (ftUS)	Latitude (N/S ° ' ")	Longitude (E/W ° ' ")
Surface	0.00	0.00	0.00	0.00	0.00	0.00	0.00	N/A	1896257.41	131476.76	N 36 12 18.54	W 107 29 56.80
9 5/8" Casing Point	408.00	0.78	219.13	407.99	1.74	-2.15	-1.75	0.19	1896255.29	131474.99	N 36 12 18.52	W 107 29 56.82
Begin MWD Survey	462.00	0.88	219.13	461.98	2.23	-2.75	-2.24	0.19	1896254.69	131474.49	N 36 12 18.51	W 107 29 56.82
	525.00	0.79	225.02	524.98	2.84	-3.43	-2.85	0.20	1896254.02	131473.87	N 36 12 18.51	W 107 29 56.83
	586.00	0.97	228.36	585.87	3.52	-4.07	-3.53	0.31	1896253.66	131473.35	N 36 12 18.50	W 107 29 56.84
	648.00	1.06	227.83	647.96	4.33	-4.81	-4.35	0.15	1896252.66	131471.55	N 36 12 18.48	W 107 29 56.85
	709.00	1.06	221.94	708.95	5.12	-5.61	-5.15	0.18	1896251.87	131470.89	N 36 12 18.47	W 107 29 56.87
	770.00	0.88	214.91	769.94	5.77	-6.41	-6.27	0.35	1896250.34	131470.40	N 36 12 18.47	W 107 29 56.87
	831.00	0.79	210.60	830.93	6.25	-7.16	-6.27	0.18	1896249.98	131469.98	N 36 12 18.46	W 107 29 56.88
	893.00	0.70	211.13	892.93	6.66	-7.85	-6.69	0.15	1896249.65	131469.63	N 36 12 18.46	W 107 29 56.88
	953.00	0.79	201.37	952.92	6.99	-8.55	-7.03	0.26	1896248.96	131469.36	N 36 12 18.45	W 107 29 56.88
	1014.00	0.62	198.82	1013.92	7.25	-9.25	-7.29	0.28	1896248.26	131469.08	N 36 12 18.44	W 107 29 56.89
	1076.00	0.70	204.45	1075.91	7.51	-9.91	-7.55	0.17	1896247.60	131468.83	N 36 12 18.44	W 107 29 56.89
	1136.00	0.62	197.59	1135.91	7.76	-10.56	-7.80	0.19	1896246.96	131468.54	N 36 12 18.43	W 107 29 56.89
	1198.00	0.62	212.71	1197.91	8.04	-11.16	-8.09	0.26	1896246.36	131468.30	N 36 12 18.43	W 107 29 56.89
	1258.00	0.53	219.65	1257.90	8.39	-11.65	-8.44	0.19	1896245.68	131468.18	N 36 12 18.42	W 107 29 56.90
	1319.00	0.44	215.96	1318.90	8.71	-12.05	-8.76	0.16	1896245.47	131467.85	N 36 12 18.42	W 107 29 56.90
	1379.00	0.62	220.53	1378.90	9.05	-12.49	-9.10	0.31	1896245.04	131467.50	N 36 12 18.41	W 107 29 56.91
	1440.00	0.53	222.38	1439.90	9.45	-12.95	-9.51	0.15	1896244.59	131467.09	N 36 12 18.42	W 107 29 56.91
	1501.00	0.53	219.57	1500.89	9.82	-13.37	-9.88	0.04	1896244.17	131466.72	N 36 12 18.41	W 107 29 56.92
	1562.00	0.70	230.99	1561.89	10.29	-13.82	-10.35	0.34	1896243.72	131466.24	N 36 12 18.40	W 107 29 56.92
	1622.00	0.70	236.97	1621.88	10.88	-14.25	-10.94	0.12	1896243.30	131465.84	N 36 12 18.39	W 107 29 56.93
	1683.00	0.70	227.21	1682.88	11.46	-14.71	-11.52	0.20	1896242.85	131465.05	N 36 12 18.39	W 107 29 56.94
	1747.00	0.53	256.13	1746.88	12.04	-15.05	-12.10	0.54	1896242.52	131464.47	N 36 12 18.39	W 107 29 56.94
	1812.00	0.79	254.20	1811.87	12.76	-15.24	-12.82	0.40	1896242.34	131463.75	N 36 12 18.39	W 107 29 56.95
	1876.00	1.06	254.55	1875.86	13.75	-15.52	-13.82	0.42	1896242.07	131462.75	N 36 12 18.39	W 107 29 56.96
	1939.00	0.62	123.33	1938.86	14.03	-15.86	-14.09	2.45	1896241.73	131462.47	N 36 12 18.38	W 107 29 56.97
	2003.00	1.49	104.34	2002.85	12.93	-16.26	-13.00	1.45	1896241.32	131462.56	N 36 12 18.38	W 107 29 56.95
	2067.00	0.88	95.38	2066.83	11.64	-16.51	-11.70	0.99	1896241.05	131464.85	N 36 12 18.38	W 107 29 56.94
	2131.00	0.35	99.16	2130.83	10.95	-16.59	-11.02	0.83	1896240.97	131465.53	N 36 12 18.38	W 107 29 56.93
	2195.00	0.35	115.15	2194.83	10.58	-16.70	-10.65	0.15	1896240.85	131465.90	N 36 12 18.37	W 107 29 56.93
	2259.00	0.35	141.87	2258.83	10.28	-16.94	-10.35	0.25	1896240.61	131466.20	N 36 12 18.37	W 107 29 56.92
	2323.00	0.44	108.56	2322.83	9.93	-17.17	-10.00	0.38	1896240.37	131466.55	N 36 12 18.37	W 107 29 56.92
	2387.00	0.53	93.18	2386.82	9.40	-17.26	-9.47	0.25	1896240.27	131467.07	N 36 12 18.37	W 107 29 56.91
	2451.00	0.53	88.35	2450.82	8.81	-17.27	-8.88	0.07	1896240.26	131467.66	N 36 12 18.37	W 107 29 56.90
	2515.00	0.26	90.54	2514.82	8.37	-17.27	-8.44	0.42	1896240.26	131468.11	N 36 12 18.37	W 107 29 56.90
	2579.00	0.26	126.84	2578.82	8.11	-17.35	-8.18	0.25	1896240.17	131468.37	N 36 12 18.37	W 107 29 56.90
	2643.00	0.44	112.43	2642.82	7.76	-17.53	-7.83	0.31	1896239.98	131468.71	N 36 12 18.37	W 107 29 56.89
	2707.00	0.53	113.31	2706.82	7.26	-17.75	-7.33	0.14	1896239.76	131469.20	N 36 12 18.36	W 107 29 56.89
	2771.00	0.44	85.27	2770.81	6.75	-17.84	-6.82	0.39	1896239.66	131469.72	N 36 12 18.36	W 107 29 56.88
	2836.00	0.26	102.32	2835.81	6.35	-17.85	-6.42	0.32	1896239.64	131470.11	N 36 12 18.36	W 107 29 56.87
	2900.00	0.26	52.84	2899.81	6.09	-17.80	-6.17	0.34	1896239.70	131470.37	N 36 12 18.36	W 107 29 56.87
	2964.00	0.26	79.82	2963.81	5.84	-17.68	-5.91	0.19	1896239.81	131470.63	N 36 12 18.37	W 107 29 56.87
	3028.00	0.35	85.88	3027.81	5.50	-17.64	-5.57	0.15	1896239.84	131470.97	N 36 12 18.37	W 107 29 56.86
	3092.00	0.26	75.16	3091.81	5.16	-17.59	-5.23	0.17	1896239.89	131471.30	N 36 12 18.37	W 107 29 56.86
	3157.00	0.35	118.76	3156.81	4.85	-17.65	-4.92	0.37	1896239.83	131471.62	N 36 12 18.37	W 107 29 56.86
	3221.00	0.44	117.79	3220.81	4.46	-17.86	-4.53	0.14	1896239.61	131472.01	N 36 12 18.36	W 107 29 56.85
	3285.00	0.35	109.44	3284.81	4.05	-18.04	-4.13	0.17	1896239.43	131472.41	N 36 12 18.36	W 107 29 56.85
	3348.00	0.53	105.22	3347.80	3.59	-18.18	-3.66	0.29	1896239.28	131472.87	N 36 12 18.36	W 107 29 56.84
	3413.00	0.79	113.57	3412.80	2.89	-18.44	-2.96	0.43	1896239.01	131473.56	N 36 12 18.36	W 107 29 56.83
	3477.00	0.79	115.42	3476.79	2.09	-18.80	-2.16	0.04	1896238.64	131474.36	N 36 12 18.35	W 107 29 56.82
	3541.00	0.70	106.80	3540.79	1.31	-19.10	-1.39	0.22	1896238.33	131475.13	N 36 12 18.35	W 107 29 56.81
	3605.00	0.62	100.21	3604.78	0.60	-19.28	-0.67	0.17	1896238.14	131475.94	N 36 12 18.35	W 107 29 56.80
	3668.00	0.53	103.46	3667.78	-0.02	-19.41	-0.05	0.15	1896238.01	131476.46	N 36 12 18.35	W 107 29 56.80
	3732.00	0.44	126.93	3731.78	-0.51	-19.62	0.43	0.34	1896237.76	131476.94	N 36 12 18.35	W 107 29 56.79
	3797.00	0.44	131.50	3796.78	-0.90	-19.84	0.82	0.05	1896237.46	131477.32	N 36 12 18.34	W 107 29 56.79
	3861.00	0.53	134.14	3860.77	-1.29	-20.31	1.21	0.14	1896237.09	131477.72	N 36 12 18.34	W 107 29 56.78
	3925.00	0.53	140.38	3924.77	-1.70	-20.74	1.81	0.09	1896236.65	131478.11	N 36 12 18.33	W 107 29 56.78
	3989.00	0.53	137.21	3988.77	-2.09	-21.19	2.00	0.05	1896236.20	131478.50	N 36 12 18.33	W 107 29 56.77
	4053.00	0.62	148.73	4052.77	-2.47	-21.70	2.38	0.23	1896235.68	131478.87	N 36 12 18.33	W 107 29 56.77
	4117.00	0.26	109.88	4116.76	-2.79	-22.05	2.70	0.70	1896235.33	131479.18	N 36 12 18.32	W 107 29 56.76
	4182.00	0.44	135.28	4181.76	-3.10	-22.27	3.02	0.36	1896235.10	131479.49	N 36 12 18.32	W 107 29 56.76
	4246.00	0.35	134.93	4245.76	-3.42	-22.59	3.33	0.14	1896234.78	131479.80	N 36 12 18.32	W 107 29 56.76
	4310.00	0.62	83.78	4309.76	-3.90	-22.69	3.81	0.76	1896234.68	131480.28	N 36 12 18.32	W 107 29 56.75
	4373.00	0.62	77.62	4372.76	-4.57	-22.58	4.48	0.11	1896234.78	131480.95	N 36 12 18.32	W 107 29 56.74
	4437.00	0.70	84.39	4436.75	-5.30	-22.46	5.21	0.17	1896234.88	131481.68		

Comments	MD (ft)	Incl (°)	Azim True (°)	TVD (ft)	VSEC (ft)	NS (ft)	EW (ft)	DLS (°/100ft)	Northing (ftUS)	Easting (ftUS)	Latitude (N/S ° ° °)	Longitude (E/W ° ° °)
	5141.00	22.95	265.59	5132.82	50.47	-30.53	-50.59	8.35	1896227.54	131425.78	N 36 12 18.24 W 107 29 57.41	
	5205.00	28.40	272.63	5190.49	78.14	-30.79	-78.26	9.75	1896227.63	131398.11	N 36 12 18.24 W 107 29 57.75	
	5269.00	33.59	271.65	5245.34	111.07	-29.58	-111.19	8.15	1896229.26	131365.20	N 36 12 18.25 W 107 29 58.15	
	5333.00	39.75	267.35	5296.65	149.25	-30.02	-149.37	10.42	1896229.32	131327.01	N 36 12 18.24 W 107 29 58.62	
	5397.00	45.11	265.43	5343.88	192.31	-32.77	-192.44	8.62	1896227.12	131283.91	N 36 12 18.22 W 107 29 59.14	
	5461.00	50.12	266.51	5387.01	239.43	-36.08	-239.58	7.93	1896224.42	131236.73	N 36 12 18.18 W 107 29 59.72	
	5524.00	57.16	266.38	5424.33	290.03	-39.22	-290.19	11.18	1896221.93	131186.08	N 36 12 18.15 W 107 30 0.34	
	5589.00	62.43	266.66	5457.02	346.06	-42.63	-346.24	8.12	1896219.25	131129.99	N 36 12 18.12 W 107 30 1.02	
	5652.00	64.72	266.86	5485.06	402.37	-45.81	-402.56	3.65	1896216.78	131073.63	N 36 12 18.09 W 107 30 1.71	
	5716.00	68.94	268.93	5510.24	461.15	-47.96	-461.34	7.23	1896215.40	131014.82	N 36 12 18.07 W 107 30 2.42	
	5780.00	74.30	269.38	5530.41	521.85	-48.85	-522.05	8.40	1896215.29	130954.10	N 36 12 18.06 W 107 30 3.17	
	5844.00	79.40	270.13	5544.96	584.15	-49.11	-584.35	8.05	1896215.83	130891.80	N 36 12 18.05 W 107 30 3.93	
	5885.00	82.22	269.85	5551.51	642.62	-49.12	-642.82	6.91	1896216.34	130851.33	N 36 12 18.05 W 107 30 4.42	
7" Casing Point	5944.00	86.93	269.91	5557.09	683.33	-49.24	-683.54	7.98	1896216.98	130792.61	N 36 12 18.05 W 107 30 5.14	
Landing Point	5952.00	87.57	269.92	5557.47	697.32	-49.25	-697.53	7.98	1896217.07	130784.62	N 36 12 18.05 W 107 30 5.23	
	5993.00	90.84	269.96	5558.04	732.31	-49.30	-732.52	7.98	1896217.55	130743.63	N 36 12 18.05 W 107 30 5.73	
	6054.00	90.48	270.48	5557.34	793.31	-49.06	-793.51	1.04	1896218.57	130682.64	N 36 12 18.05 W 107 30 6.48	
	6117.00	91.28	270.59	5556.37	856.30	-48.48	-856.50	1.28	1896219.97	130616.66	N 36 12 18.06 W 107 30 7.25	
	6182.00	91.01	270.38	5555.07	921.29	-47.93	-921.49	0.53	1896221.36	130554.69	N 36 12 18.07 W 107 30 8.04	
	6245.00	91.01	270.68	5553.96	984.28	-47.34	-984.47	0.48	1896222.75	130491.71	N 36 12 18.07 W 107 30 8.81	
	6309.00	90.31	269.85	5553.23	1048.27	-47.05	-1048.47	1.70	1896223.87	130427.72	N 36 12 18.07 W 107 30 9.59	
	6373.00	91.01	269.95	5552.49	1112.27	-47.16	-1112.46	1.10	1896224.58	130363.73	N 36 12 18.07 W 107 30 10.37	
	6437.00	90.75	270.00	5551.51	1176.26	-47.19	-1176.46	0.41	1896225.38	130299.74	N 36 12 18.07 W 107 30 11.15	
	6501.00	91.19	270.62	5550.42	1240.25	-46.84	-1240.45	1.19	1896226.55	130235.75	N 36 12 18.08 W 107 30 11.93	
	6565.00	91.01	270.42	5549.19	1304.24	-46.26	-1304.43	0.42	1896227.95	130171.78	N 36 12 18.08 W 107 30 12.71	
	6629.00	90.75	270.07	5548.21	1368.23	-45.99	-1368.42	0.68	1896229.05	130107.79	N 36 12 18.08 W 107 30 13.49	
	6693.00	91.28	270.73	5547.08	1432.22	-45.54	-1432.41	1.32	1896230.32	130043.81	N 36 12 18.09 W 107 30 14.27	
	6757.00	90.66	270.33	5545.99	1496.21	-44.85	-1496.40	1.15	1896231.74	129979.83	N 36 12 18.10 W 107 30 15.05	
	6821.00	91.28	270.79	5544.91	1560.20	-44.32	-1560.39	1.21	1896233.19	129915.85	N 36 12 18.10 W 107 30 15.83	
	6885.00	90.92	270.62	5543.68	1624.18	-43.53	-1624.37	0.62	1896234.80	129851.88	N 36 12 18.11 W 107 30 16.62	
	6949.00	90.92	270.83	5542.55	1688.17	-42.87	-1688.36	0.48	1896236.49	129787.91	N 36 12 18.12 W 107 30 17.40	
	7012.00	90.57	271.44	5541.83	1751.16	-41.37	-1751.34	0.98	1896238.60	129724.95	N 36 12 18.13 W 107 30 18.16	
	7076.00	91.10	272.92	5540.90	1815.11	-38.93	-1815.28	2.46	1896241.86	129661.18	N 36 12 18.15 W 107 30 18.94	
	7140.00	90.66	273.21	5539.92	1879.02	-35.51	-1879.18	0.82	1896245.11	129597.41	N 36 12 18.19 W 107 30 19.72	
	7204.00	91.54	273.48	5538.69	1942.92	-31.78	-1943.06	1.44	1896250.66	129533.35	N 36 12 18.23 W 107 30 20.50	
	7268.00	90.82	273.42	5537.32	2006.80	-27.93	-2006.93	0.97	1896255.33	129469.54	N 36 12 18.26 W 107 30 21.28	
	7332.00	90.48	273.15	5536.53	2070.70	-24.26	-2070.82	0.81	1896259.82	129405.69	N 36 12 18.30 W 107 30 22.06	
	7396.00	91.71	271.54	5535.31	2134.65	-21.64	-2134.75	3.17	1896263.27	129341.80	N 36 12 18.33 W 107 30 22.84	
	7460.00	91.71	272.14	5533.40	2198.59	-19.59	-2198.69	0.94	1896268.14	129277.89	N 36 12 18.35 W 107 30 23.62	
	7524.00	90.66	271.28	5532.08	2262.56	-17.68	-2262.64	2.12	1896268.88	129213.96	N 36 12 18.36 W 107 30 24.40	
	7588.00	91.01	270.47	5531.15	2326.54	-16.70	-2326.63	1.38	1896270.68	129149.98	N 36 12 18.37 W 107 30 25.18	
	7652.00	92.15	271.12	5529.38	2390.52	-15.81	-2390.60	2.05	1896272.39	129086.03	N 36 12 18.38 W 107 30 25.96	
	7716.00	91.63	270.73	5527.27	2454.48	-14.78	-2454.55	1.02	1896274.25	129022.09	N 36 12 18.39 W 107 30 26.74	
	7780.00	90.84	270.22	5525.89	2518.46	-14.25	-2518.54	1.47	1896275.60	128958.12	N 36 12 18.40 W 107 30 27.53	
	7843.00	91.63	269.51	5524.53	2582.44	-14.40	-2582.52	1.69	1896276.26	128895.13	N 36 12 18.40 W 107 30 28.29	
	7907.00	91.10	268.59	5523.01	2646.42	-14.90	-2646.50	0.84	1896276.58	128831.15	N 36 12 18.39 W 107 30 29.07	
	7971.00	90.66	268.68	5522.02	2708.41	-15.31	-2708.49	0.70	1896277.00	128767.16	N 36 12 18.39 W 107 30 29.86	
	8035.00	91.71	270.18	5520.68	2774.39	-15.39	-2774.48	1.79	1896277.76	128702.17	N 36 12 18.39 W 107 30 30.65	
	8099.00	91.36	270.37	5518.99	2837.37	-15.09	-2837.45	0.63	1896278.87	128638.20	N 36 12 18.39 W 107 30 31.42	
	8164.00	91.01	270.34	5517.65	2903.36	-14.68	-2903.44	0.54	1896280.11	128574.22	N 36 12 18.40 W 107 30 32.21	
	8227.00	90.66	270.31	5516.73	2965.35	-14.33	-2965.43	0.56	1896281.28	128511.24	N 36 12 18.40 W 107 30 32.98	
	8291.00	91.45	270.58	5515.55	3029.34	-13.83	-3029.42	1.30	1896282.60	128447.26	N 36 12 18.40 W 107 30 33.76	
	8355.00	91.19	270.72	5514.08	3093.32	-13.10	-3093.40	0.46	1896284.15	128383.29	N 36 12 18.41 W 107 30 34.54	
	8419.00	90.84	270.31	5512.94	3157.31	-12.53	-3157.38	0.84	1896285.55	128319.31	N 36 12 18.41 W 107 30 35.32	
	8483.00	90.75	270.21	5512.06	3221.30	-12.24	-3221.38	0.21	1896286.66	128255.33	N 36 12 18.42 W 107 30 36.10	
	8547.00	90.40	268.83	5511.41	3285.30	-12.22	-3285.37	0.81	1896287.51	128191.33	N 36 12 18.42 W 107 30 36.88	
	8611.00	91.10	271.02	5510.58	3349.29	-11.74	-3349.36	2.16	1896288.81	128127.35	N 36 12 18.42 W 107 30 37.66	
	8676.00	90.31	270.74	5509.78	3414.28	-10.74	-3414.35	1.29	1896290.64	128062.38	N 36 12 18.43 W 107 30 38.44	
	8739.00	91.89	270.50	5508.57	3477.26	-10.06	-3477.33	2.54	1896292.14	127998.40	N 36 12 18.44 W 107 30 39.22	
	8803.00	91.28	270.10	5506.80	3541.24	-9.73	-3541.31	1.14	1896293.30	127935.44	N 36 12 18.44 W 107 30 40.00	
	8867.00	91.01	269.98	5505.52	3605.23	-9.68	-3605.29	0.46	1896294.16	127871.45	N 36 12 18.44 W 107 30 40.79	
	8931.00	90.66	269.68	5504.59	3669.22	-9.87	-3669.29	0.72	1896294.80	127807.46	N 36 12 18.44 W 107 30 41.57	
	8995.00	91.28	270.81	5503.50	3733.21	-9.60	-3733.28	2.01	1896295.90	127743.48	N 36 12 18.44 W 107 30 42.35	
	9059.00	90.31	269.60	5502.61	3797.20	-9.37	-3797.27	2.42	1896296.95	127679.49	N 36 12 18.44 W 107 30 43.13	
	9122.00	91.63	270.07	5501.55	3861.19	-9.55	-3861.26	2.22	1896297.58	127616.50	N 36 12 18.44 W 107 30 43.90	
	9187.00	91.10	270.09	5500.00	3925.17	-9.46	-3925.24	0.82	1896298.51	127551.52	N 36 12 18.44 W 107 30 44.69	
	9250.00	91.71	270.01	5498.45	3989.15	-9.40	-3989.22	0.98	1896299.37	127488.54	N 36 12 18.44 W 107 30 45.46	
	9315.00	91.45	270.00	5496.66	4053.12	-9.40	-4053.19	0.40	1896300.22	127423.57	N 36 12 18.44 W 107 30 46.25	
	9379.00	90.04	270.96	5495.83	4117.12	-8.86	-4117.18	1.87	1896301.58	127359.59	N 36 12 18.45 W 107 30 47.03	
	9443.00	90.40	272.11	5495.58	4181.10	-7.15	-4181.16	2.68	1896304.11	127295.64	N 36 12 18.47 W 107 30 47.81	
	9507.00	91.01	272.76	5494.80	4245.04	-4.43	-4245.10	1.39	1896307.66	127231.74	N 36 12 18.49 W 107 30 48.59	
	9571.00	90.92	273.43	5493.72	4308.95	-0.97	-4308.99	1.06	1896311.93	127167.89	N 36 12 18.53 W 107 30 49.37	
	9635.00	90.84	273.39	5492.74	4372.85	2.83	-4372.87	0.14	1896316.56	127104.06	N 36 12 18.56 W 107 30 50.15	
	9699.00	90.48	274.11	5492.00	4436.72	7.02	-4436.73	1.26	1896321.57	127040.26	N 36 12 18.61 W 107 30 50.93	
	9763.00	91.10	273.72	5491.12	4500.58	11.39	-4500.57	1.14	1896326.76	126976.47	N 36 12 18.65 W 107 30 51.71	
	9827.00	90.84	273.56	5490.05	4563.46	15.39	-4563.44	0.48	1896331.57	126913.66	N 36 12 18.69 W 107 30 52.48	