

RECEIVED

Form 3160-5
(February 2005)

UNITED STATES
DEPARTMENT OF THE INTERIOR
BUREAU OF LAND MANAGEMENT

APR 02 2014

FORM APPROVED
OMB No. 1004-0137
Expires: March 31, 2007

Farmington Field Office

Lease Serial No.

NMSF 078360

RCVD APR 14 '14

SUNDRY NOTICES AND REPORTS ON WELLS of Land Managed by the Bureau of Land Management
Do not use this form for proposals to drill or to re-enter an abandoned well. Use Form 3160-3 (APD) for such proposals.

SUBMIT IN TRIPLICATE – Other instructions on page 2.

1. Type of Well		6. If Indian, Allottee or Tribe Name
<input checked="" type="checkbox"/> Oil Well <input type="checkbox"/> Gas Well <input type="checkbox"/> Other		oil cons. well
2. Name of Operator WPX Energy Production, LLC		7. If Unit of CA/Agreement, Name and/or No. DIST. 3
3a. Address PO Box 640 Aztec, NM 87410	3b. Phone No. (include area code) 505-333-1808	8. Well Name and No. Chaco 2306-20M #208H
4. Location of Well (Footage, Sec., T., R., M., or Survey Description) SHL: 485' FSL & 155' FWL SEC 20 23N 6W BHL: 451' FSL & 231' FWL SEC 19 23N 6W		9. API Well No. 30-043-21170
		10. Field and Pool or Exploratory Area Lybrook Gallup
		11. Country or Parish, State Sandoval County, NM

12. CHECK THE APPROPRIATE BOX(ES) TO INDICATE NATURE OF NOTICE, REPORT OR OTHER DATA

TYPE OF SUBMISSION	TYPE OF ACTION			
<input type="checkbox"/> Notice of Intent	<input type="checkbox"/> Acidize	<input type="checkbox"/> Deepen	<input type="checkbox"/> Production (Start/Resume)	<input type="checkbox"/> Water Shut-Off
	<input type="checkbox"/> Alter Casing	<input type="checkbox"/> Fracture Treat	<input type="checkbox"/> Reclamation	<input type="checkbox"/> Well Integrity
<input checked="" type="checkbox"/> Subsequent Report	<input type="checkbox"/> Casing Repair	<input type="checkbox"/> New Construction	<input type="checkbox"/> Recomplete	<input checked="" type="checkbox"/> Other <u>Supplemental completion</u>
<input type="checkbox"/> Final Abandonment Notice	<input type="checkbox"/> Change Plans	<input type="checkbox"/> Plug and Abandon	<input type="checkbox"/> Temporarily Abandon	
	<input type="checkbox"/> Convert to Injection	<input type="checkbox"/> Plug Back	<input type="checkbox"/> Water Disposal	

13. Describe Proposed or Completed Operation: Clearly state all pertinent details, including estimated starting date of any proposed work and approximate duration thereof. If the proposal is to deepen directionally or recompleat horizontally, give subsurface locations and measured and true vertical depths of all pertinent markers and zones. Attach the Bond under which the work will be performed or provide the Bond No. on file with BLM/BIA. Required subsequent reports must be filed within 30 days following completion of the involved operations. If the operation results in a multiple completion or recompleat in a new interval, a Form 3160-4 must be filed once testing has been completed. Final Abandonment Notices must be filed only after all requirements, including reclamation, have been completed and the operator has determined that the site is ready for final inspection.)

3-21-14 – MIRU AWS #395 to pull 4-1/2" tie back string and install gas lift. TOH with 2-3/8" production tubing

3-24-14 – RIH and set RBP @ 5957'

3-25-14 – TOH and lay down tie back casing, 152 jts, 4-1/2" 11.6#, N-80, LT&C csg. RIH and retrieve RBP set # 5957'

3-26-14 – CO and land well @ 5902' as follows: mule shoe, 1 joint 2 3/8", 4.7# J-55, EUE 8rd tubing, XN profile nipple, 5 joints 2 3/8", 4.7#, J-55, EUE 8rd tubing, 2 3/8" X 2 7/8" cross over, 1 joint 2 7/8", 6.5#, J-55, EUE 8rd tubing, 7" ASIX packer @ 5680', on/off tool with 2.25 "F" Nipple, 3 joints 2 7/8", 6.5#, J-55, EUE 8rd tubing, gas mandrel #1, 16 joints 2 7/8", 6.5#, J-55, EUE 8rd tubing, gas lift mandrel #2, 15 joints 2 7/8", 6.5#, J-55, EUE 8rd tubing, gas lift mandrel #3, 18 joints 2 7/8", 6.5#, J-55, EUE 8rd tubing, gas lift mandrel #4, 22 joints 2 7/8", 6.5#, J-55, EUE 8rd tubing, gas lift mandrel #5, 29 joints 2 7/8", 6.5#, J-55, EUE 8rd tubing, gas lift mandrel #6, 35 joints 2 7/8", 6.5#, J-55, EUE 8rd tubing, gas lift mandrel #7, 44 joints 2 7/8", 6.5#, J-55, EUE 8rd tubing

3-27-14 – RDMO AWS #395

ACCEPTED FOR RECORD

APR 10 2014

FARMINGTON FIELD OFFICE
BY: William Tambekou

14. I hereby certify that the foregoing is true and correct. Name (Printed/Typed) Larry Higgins		Title Regulatory Specialist
Signature <u>Larry Higgins</u>		Date 03/31/14

THIS SPACE FOR FEDERAL OR STATE OFFICE USE

Approved by	Title	Date
Conditions of approval, if any, are attached. Approval of this notice does not warrant or certify that the applicant holds legal or equitable title to those rights in the subject lease which would entitle the applicant to conduct operations thereon.	Office	
Title 18 U.S.C. Section 1001 and Title 43 U.S.C. Section 1212, make it a crime for any person knowingly and willfully to make to any department or agency of the United States any false, fictitious or fraudulent statements or representations as to any matter within its jurisdiction.		

NMOCDF

Chaco 2306-20M #208H
LYBROOK GALLUP Horizontal
 (page 1)

Spud: 11/6/13
 Completed: 12/18/13
 Install gas lift: 3/27/14

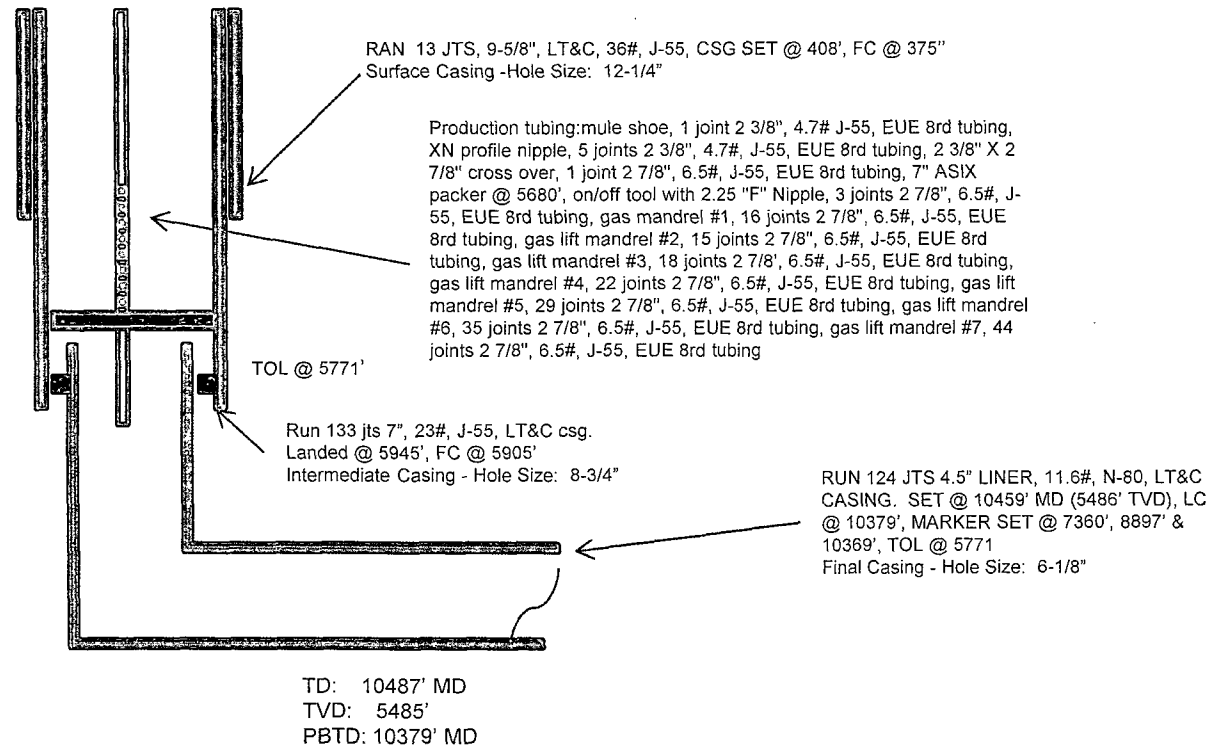
SHL: 485' FSL & 155' FWL
 SW/4 SW/4 Section 20 (M), T23N, R6W

BHL: 451' FSL & 231' FWL
 SW/4 SW/4 Section 19 (M), T23N, R6W

Sandoval., NM
Elevation: 7037' GR
API: 30-043-21170

<i>Tops</i>	<i>MD</i>	<i>TVD</i>
Ojo Alamo	1396'	1396'
Kirtland	1674'	1674'
Pictured Cliffs	1971'	1971'
Lewis	2065'	2065'
Chacra	2400'	2400'
Cliff House	3483'	3483'
Menefee	3508'	3508'
Point Lookout	4257'	4257'
Mancos	4453'	4453'
Gallup	4849'	4849'

Post Gas Lift



HOLE SIZE	CASING	CEMENT	VOLUME	CMT TOP
12-1/4"	9-5/8"	245 sx	282 cu.ft.	Surface
8-3/4"	7"	750 sx	1033 cu. ft.	Surface
6-1/8"	4-1/2"	390 sx	525 cu. ft.	TOL 5771'

Gallup 15th:
5970'-6186'-
with 24, 0.40"
holes. Frac Gallup
15th stage with
269,100# , 20/40
PSA Sand

Gallup 14th:
6257'-6461'-
with 24, 0.40"
holes. Frac Gallup
14th stage with
247,800# , 20/40
PSA Sand

Gallup 13th:
6525'-6741'-
with 24, 0.40"
holes. Frac Gallup
13th stage with
258,500# , 20/40
PSA Sand

Gallup 12th:
6821'-7020'-
with 24, 0.40" holes.
Frac Gallup 12th
stage with 190,500#
 , 20/40 PSA Sand

Gallup 11th:
7094'-7317'-
with 24, 0.40"
holes. Frac Gallup
11th stage with
235,500# , 20/40
PSA Sand

Gallup 10th:
7385'-7595'-
with 24, 0.40"
holes. Frac
Gallup 10th
stage with
205,600# ,
20/40 PSA
Sand

Gallup 9th:
7665'-7914'-
with 24, 0.40"
holes. Frac Gallup
9th stage with
200,800# , 20/40
PSA Sand

Gallup 8th:
8003'-8227'-
with 24, 0.40"
holes. Frac Gallup
8th stage with
208,400# , 20/40
PSA Sand

Gallup 7th:
8312'-8517'-
with 24, 0.40"
holes. Frac
Gallup 7th
stage with
201,100# ,
20/40 PSA
Sand

Gallup 6th:
8608'-8854' -
with 24, 0.40"
holes. Frac
Gallup 6th stage
with 200,300# ,
20/40 PSA
Sand

Gallup 5th:
8924'-9170'-
with 24, 0.40"
holes. Frac
Gallup 5th stage
with 196,400# ,
20/40 PSA
Sand

Gallup 4th:
9250'-9481'-
with 24, 0.40"
holes. Frac
Gallup 4th stage
with 198,900# ,
20/40 PSA
Sand

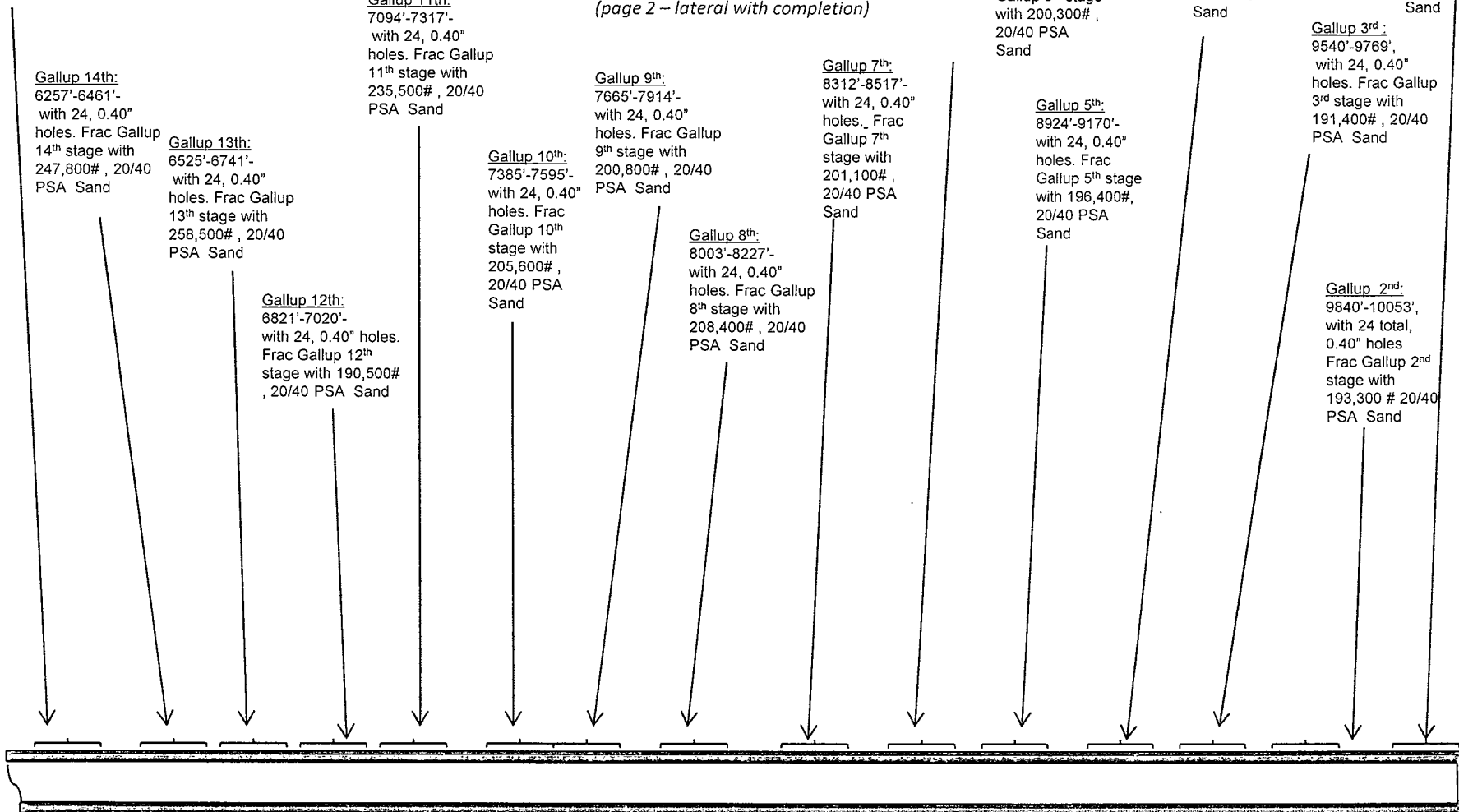
Gallup 3rd:
9540'-9769',
with 24, 0.40"
holes. Frac Gallup
3rd stage with
191,400# , 20/40
PSA Sand

Gallup 2nd:
9840'-10053',
with 24 total,
0.40" holes
Frac Gallup 2nd
stage with
193,300 # 20/40
PSA Sand

Gallup 1st:
10127'-10290' '
+ RSI TOOL @
10369'
with 197,300#
20/40 PSA
Sand

Chaco 2306-20M #208H LYBROOK GALLUP Horizontal

(page 2 -- lateral with completion)



See page 1 for upper portion of hole

Chaco 2306-20M #208H

LYBROOK GALLUP Horizontal

(page 1)

Spud: 11/6/13

Completed: 12/18/13

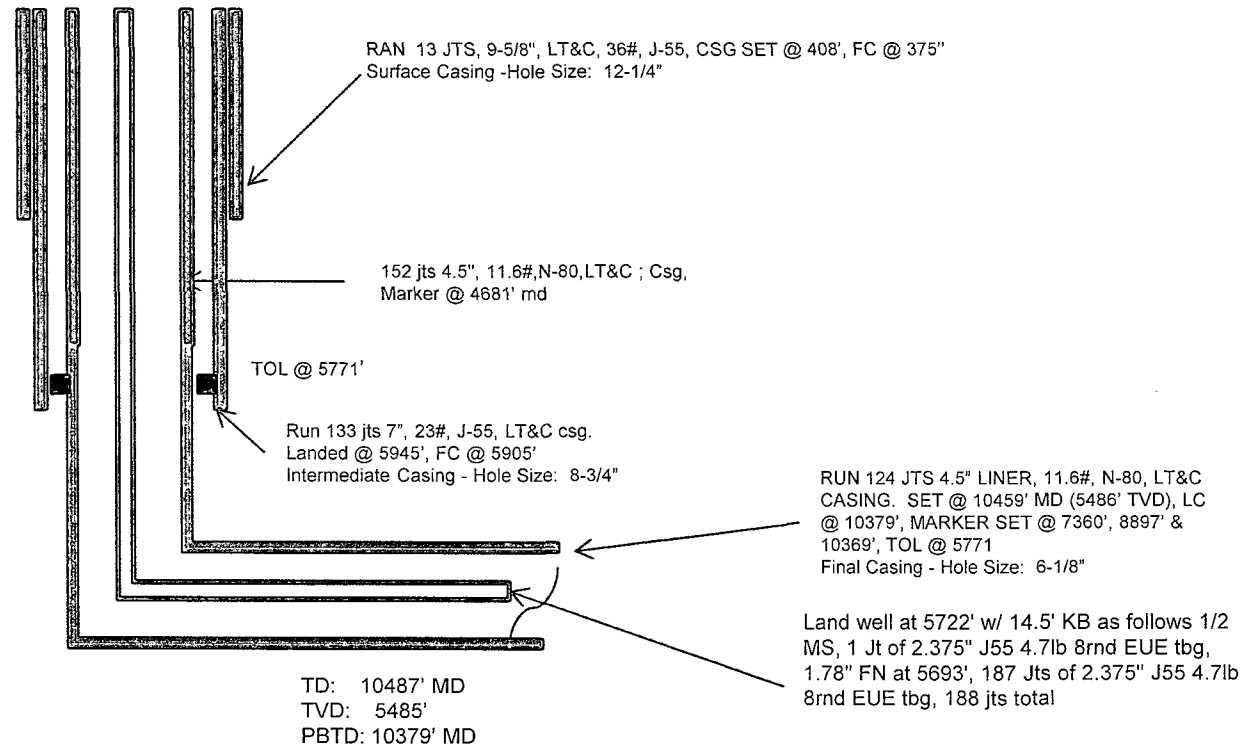
Pre Gas Lift

SHL: 485' FSL & 155' FWL
SW/4 SW/4 Section 20 (M), T23N, R6W

BHL: 451' FSL & 231' FWL
SW/4 SW/4 Section 19 (M), T23N, R6W

Sandoval., NM
Elevation: 7037' GR
API: 30-043-21170

<i>Tops</i>	<i>MD</i>	<i>TVD</i>
Ojo Alamo	1396'	1396'
Kirtland	1674'	1674'
Pictured Cliffs	1971'	1971'
Lewis	2065'	2065'
Chacra	2400'	2400'
Cliff House	3483'	3483'
Menefee	3508'	3508'
Point Lookout	4257'	4257'
Mancos	4453'	4453'
Gallup	4849'	4849'



HOLE SIZE	CASING	CEMENT	VOLUME	CMT TOP
12-1/4"	9-5/8"	245 sx	282 cu.ft.	Surface
8-3/4"	7"	750 sx	1033 cu. ft.	Surface
6-1/8"	4-1/2"	390 sx	525 cu. ft.	TOL 5771'

Lg 12/19/13

Gallup 15th:
5970'-6186'-
with 24, 0.40"
holes. Frac Gallup
15th stage with
269,100# , 20/40
PSA Sand

Gallup 14th:
6257'-6461'-
with 24, 0.40"
holes. Frac Gallup
14th stage with
247,800# , 20/40
PSA Sand

Gallup 13th:
6525'-6741'-
with 24, 0.40"
holes. Frac Gallup
13th stage with
258,500# , 20/40
PSA Sand

Gallup 12th:
6821'-7020'-
with 24, 0.40" holes.
Frac Gallup 12th
stage with 190,500#
, 20/40 PSA Sand

Gallup 11th:
7094'-7317'-
with 24, 0.40"
holes. Frac Gallup
11th stage with
235,500# , 20/40
PSA Sand

Gallup 10th:
7385'-7595'-
with 24, 0.40"
holes. Frac Gallup
10th stage with
205,600# ,
20/40 PSA
Sand

Gallup 9th:
7665'-7914'-
with 24, 0.40"
holes. Frac Gallup
9th stage with
200,800# , 20/40
PSA Sand

Gallup 8th:
8003'-8227'-
with 24, 0.40"
holes. Frac Gallup
8th stage with
208,400# , 20/40
PSA Sand

Gallup 7th:
8312'-8517'-
with 24, 0.40"
holes. Frac Gallup
7th stage with
201,100# ,
20/40 PSA
Sand

Gallup 6th:
8608'-8854'-
with 24, 0.40"
holes. Frac
Gallup 6th stage
with 200,300# ,
20/40 PSA
Sand

Gallup 5th:
8924'-9170'-
with 24, 0.40"
holes. Frac
Gallup 5th stage
with 196,400# ,
20/40 PSA
Sand

Gallup 4th:
9250'-9481'-
with 24, 0.40"
holes. Frac
Gallup 4th stage
with 198,900# ,
20/40 PSA
Sand

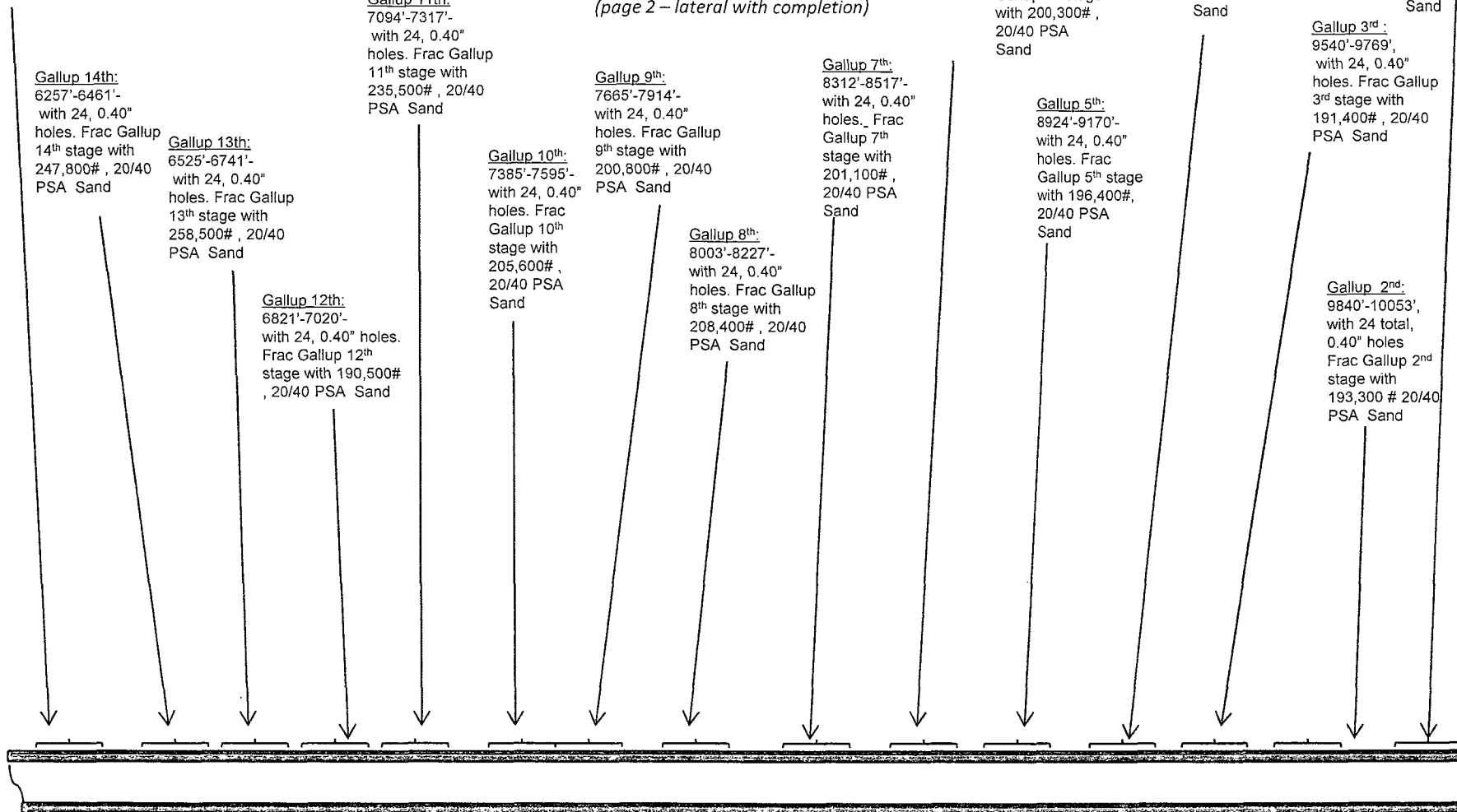
Gallup 3rd:
9540'-9769'-
with 24, 0.40"
holes. Frac Gallup
3rd stage with
191,400# , 20/40
PSA Sand

Gallup 2nd:
9840'-10053'-
with 24 total,
0.40" holes
Frac Gallup 2nd
stage with
193,300 # 20/40
PSA Sand

Gallup 1st:
10127'-10290' '
+ RSI TOOL @
10369'
with 197,300#
20/40 PSA
Sand

Chaco 2306-20M #208H LYBROOK GALLUP Horizontal

(page 2 – lateral with completion)



See page 1 for upper portion of hole