

District I
1625 N. French Drive, Hobbs, NM 88240
Phone: (575) 393-6161 Fax: (575) 393-0720
District II
811 S. First Street, Artesia, NM 88210
Phone: (575) 748-1283 Fax: (575) 748-9720
District III
1000 Rio Brazos Road, Aztec, NM 87410
Phone: (505) 334-6178 Fax: (505) 334-6170
District IV
1220 S. St. Francis Drive, Santa Fe, NM 87505
Phone: (505) 476-3460 Fax: (505) 476-3462

State of New Mexico
Energy, Minerals & Natural Resources Department

Form C-102
Revised August 1, 2011

Submit one copy to
Appropriate District Office

OIL CONSERVATION DIVISION
1220 South St. Francis Drive
Santa Fe, NM 87505

AMENDED REPORT
"As Drilled"

CONFIDENTIAL

WELL LOCATION AND ACREAGE DEDICATION PLAT

*API Number 30-039-31190	*Pool Code 42289	*Pool Name LYBROOK GALLUP
*Property Code 40085	*Property Name CHACO 2306-06L	*Well Number 179H
*OGRID No. 120782	*Operator Name WPX ENERGY PRODUCTION, LLC	*Elevation 6933'

10 Surface Location

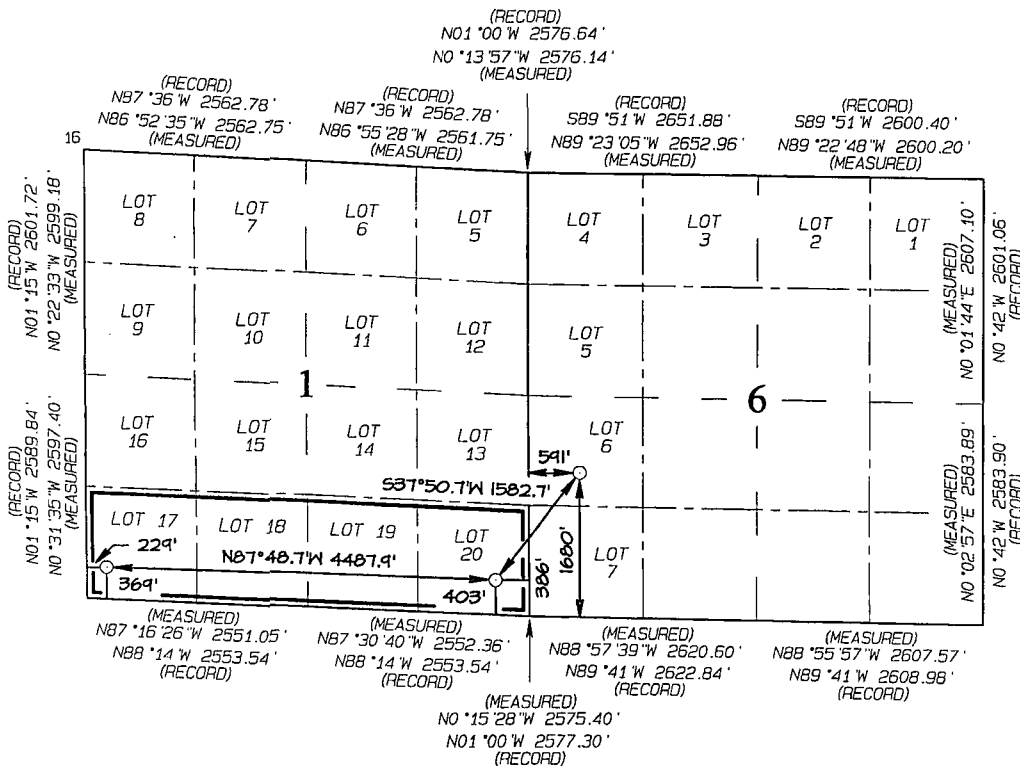
UL or lot no.	Section	Township	Range	Lot Idn	Feet from the	North/South line	Feet from the	East/West line	County
L	6	23N	6W	6	1680	SOUTH	591	WEST	RIO ARriba

11 Bottom Hole Location If Different From Surface

UL or lot no.	Section	Township	Range	Lot Idn	Feet from the	North/South line	Feet from the	East/West line	County
M	1	23N	7W	17	369	SOUTH	229	WEST	RIO ARriba
12 Dedicated Acres 151.29 Acres S/2 S/2 - Section 1					13 Joint or Infill	14 Consolidation Code	15 Order No.		

NO ALLOWABLE WILL BE ASSIGNED TO THIS COMPLETION UNTIL ALL INTERESTS HAVE BEEN CONSOLIDATED OR A NON-STANDARD UNIT HAS BEEN APPROVED BY THE DIVISION

OIL CONS. DIV DIST. 3
FEB 21 2014



END-OF-LATERAL
369' FSL 229' FWL
SECTION 1, T23N, R7W
.LAT: 36.24793°N
LONG: 107.53502°W
DATUM: NAD1927

.LAT: 36.24795°N
LONG: 107.53563°W
DATUM: NAD1983

POINT-OF-ENTRY
403' FSL 386' FEL
SECTION 1, T23N, R7W
.LAT: 36.24763°N
LONG: 107.51981°W
DATUM: NAD1927

.LAT: 36.24764°N
LONG: 107.52041°W
DATUM: NAD1983

SURFACE LOCATION
1680' FSL 591' FWL
SECTION 6, T23N, R6W
.LAT: 36.25109°N
LONG: 107.51657°W
DATUM: NAD1927

.LAT: 36.25111°N
LONG: 107.51718°W
DATUM: NAD1983

17 OPERATOR CERTIFICATION	
I hereby certify that the information contained herein is true and complete to the best of my knowledge and belief, and that this organization either owns a working interest or unleased mineral interest in the land including the proposed bottom-hole location or has a right to drill this well at this location pursuant to a contract with an owner of such a mineral or working interest, or to a voluntary pooling agreement or a compulsory pooling order heretofore entered by the division.	
Signature <i>Larry Higgins</i>	Date 2/21/14
Printed Name Larry Higgins	
E-mail Address larry.higgins@wpenergy.com	
18 SURVEYOR CERTIFICATION	
I hereby certify that the well location shown on this plat was plotted from field notes of actual surveys made by me or under my supervision, and that the same is true and correct to the best of my belief.	
Date Revised: JANUARY 7, 2014 Survey Date: OCTOBER 1, 2012	
Signature and Seal of Professional Surveyor	
JASON C. EDWARDS Certificate Number 15269	

WELL Chaco 2306-06L #179H	FIELD NM Rio Arriba County NAD27	STRUCTURE Sec 6-23N-6W
-------------------------------------	--	----------------------------------

Magnetic Parameters Model: UGGM 2012 Dip: 63.022° Mag Dec: 9.560°	Date: April 11, 2013 F.S: 50237.8mT	Surface Location Lat: N 36 15 3.924 Lon: W 107 30 59.652	NAD27 New Mexico State Plane, Central Zone, US Feet Northing: 1913047.92 ftUS Easting: 126543.83 ftUS Grid Conv: -0.749' Scale Fact: 1.00005960	Miscellaneous Slot: Chaco 2306-06L #179H Plan: R3 mov 06Dec13	TVD Ref: RKB(6951ft above MSL) Shy Date: April 11, 2013
--	--	--	---	---	--

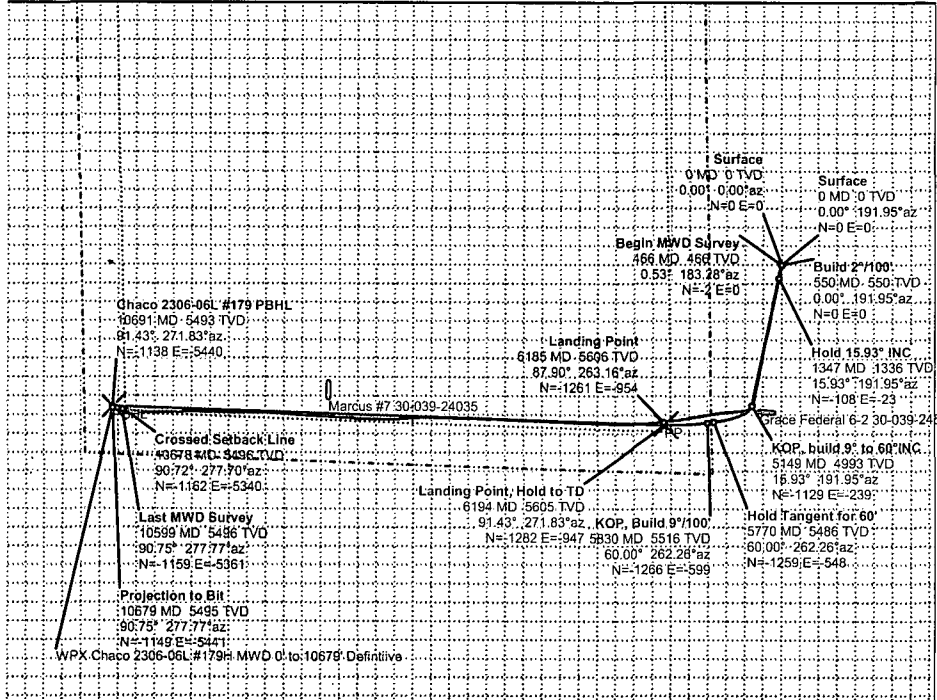
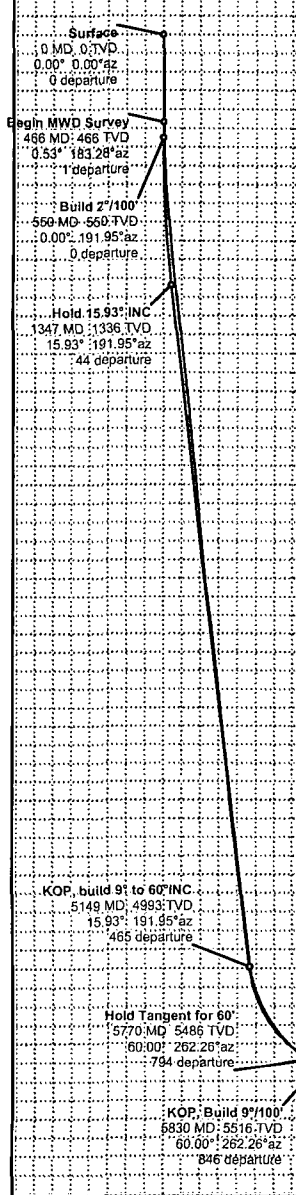
PVA

<<< W Scale = 1:1500(ft) E >>>
-6000 -4500 -3000 -1500 0



CONFIDENTIAL

True North
Tot Corr (M->T) 9.55979°
Mag Dec (9.560°)
Grid Conv (-0.749°)



1500

0

-1500

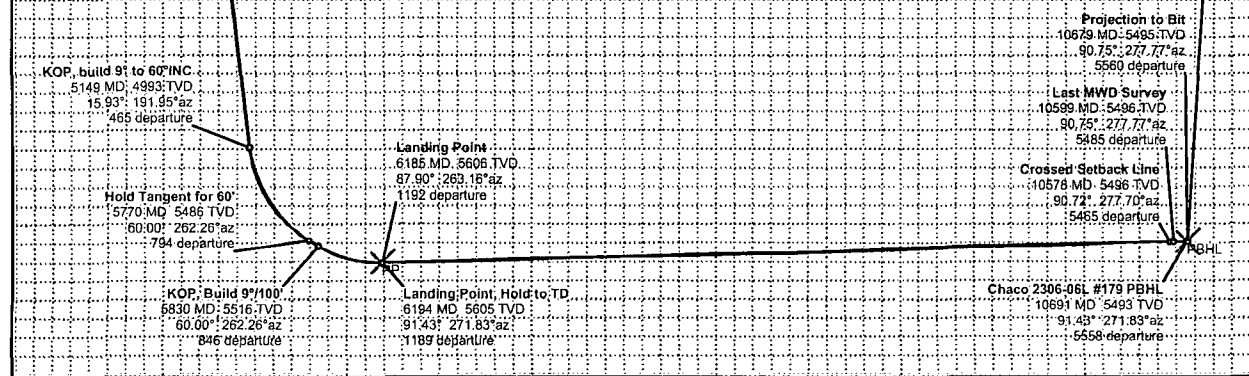
-3000

<<< S Scale = 1:1500(ft) N >>>

TVD Scale = 1:1000(ft)

OIL CONS. DIV DIST. 3
FEB 21 2014

WPX Chaco 2306-06L #179H MWD 0' to 10679' Definitive



Vertical Section (ft) Azim = 258.19° Scale = 1:1000(ft) Origin = 0 N-S, 0 E-W

WPX Chaco 2306-06L #179H MWD 0' to 10679' Definitive Survey Geodetic Report (Def Survey)

Report Date: January 03, 2014 - 09:08 AM
Client: WPX Energy
Field: NM Rio Arriba County NAD27
Structure / Slot: WPX Sec 6-23N-6W (Chaco 2306-06L #179H) / Chaco 2306-06L #179H
Well: Chaco 2306-06L #179H
Borehole: Original Hole
UWI / API#: Unknown / Unknown
Survey Name: WPX Chaco 2306-06L #179H MWD 0' to 10679' Definitive
Survey Date: December 09, 2013
Tort / AHD / DDI / ERD Ratio: 231.849 * / 6388.602 ft / 6.450 / 1.139
Coordinate Reference System: NAD27 New Mexico State Plane, Central Zone, US Feet
Location Lat / Long: N 36° 15' 3.92400", W 107° 30' 59.65200"
Location Grid N/E Y/X: N 1913047.922 ftUS, E 126543.834 ftUS
CRS Grid Convergence Angle: -0.7490 *
Grid Scale Factor: 1.0000596

Survey / DLS Computation: Minimum Curvature / Lubinski
Vertical Section Azimuth: 258.190 * (True North)
Vertical Section Origin: 0.000 ft, 0.000 ft
TVD Reference Datum: RKB
TVD Reference Elevation: 6951.000 ft above MSL
Seabed / Ground Elevation: 6937.000 ft above MSL
Magnetic Declination: 9.472 *
Total Gravity Field Strength: 998.4929mgn (9.80665 Based)
Total Magnetic Field Strength: 50177.302 nT
Magnetic Dip Angle: 63.037 *
Declination Date: December 09, 2013
Magnetic Declination Model: BGGM 2013
North Reference: True North
Grid Convergence Used: 0.0000 *
Total Corr Mag North->True North: 9.4719 *
Local Coord Referenced To: Well Head

CONFIDENTIAL

Table with columns: Comments, MD (ft), Incl (°), Azim True (°), TVD (ft), VSEC (ft), NS (ft), EW (ft), DLS (°/100ft), Northing (ftUS), Easting (ftUS), Latitude (N/S ° ' "), Longitude (E/W ° ' "). Rows include 'Surface' and a long list of depth measurements from 466.00 to 5207.00.

Comments	MD	Incl	Azim True	TVD	VSEC	NS	EW	DLS	Nothing	Eastng	Latitude	Longitude
	(ft)	(%)	(°)	(ft)	(ft)	(ft)	(ft)	(ft/100ft)	(ft/100ft)	(ft/100ft)	(N 100'	(E 100'
	5271.00	21.02	245.54	5112.12	493.89	-1157.99	-262.45	11.46	1911893.40	126266.25	N 36 14 52.47	W 107 31 2.86
	5335.00	23.65	253.64	5171.33	517.90	-1166.34	-285.23	6.27	1911885.36	126244.39	N 36 14 52.59	W 107 31 3.17
	5393.00	26.93	262.54	5226.78	546.16	-1171.89	-312.94	10.40	1911870.16	126215.58	N 36 14 52.94	W 107 31 3.74
	5463.00	34.21	264.88	5293.22	576.48	-1175.43	-346.24	8.42	1911873.85	126182.24	N 36 14 52.26	W 107 31 3.88
	5527.00	38.16	263.98	5354.87	617.04	-1179.11	-383.84	6.23	1911873.06	126147.59	N 36 14 52.26	W 107 31 4.36
	5591.00	43.79	263.95	5393.17	668.77	-1183.52	-425.96	8.60	1911870.10	126112.29	N 36 14 52.22	W 107 31 4.85
	5665.00	50.03	264.17	5426.87	726.24	-1188.35	-472.02	9.75	1911865.78	126066.29	N 36 14 52.77	W 107 31 5.41
	5719.00	56.45	262.37	5468.15	786.29	-1194.39	-522.91	10.28	1911860.40	126019.12	N 36 14 52.11	W 107 31 6.04
	5783.00	61.11	260.55	5498.52	848.35	-1202.53	-577.01	7.68	1911852.96	125971.00	N 36 14 52.03	W 107 31 6.76
	5846.00	61.64	260.94	5528.77	902.16	-1211.43	-631.59	1.00	1911848.41	125923.43	N 36 14 52.03	W 107 31 7.26
	5910.00	61.54	260.94	5558.10	956.95	-1220.59	-688.73	9.22	1911827.55	125876.29	N 36 14 51.29	W 107 31 8.29
	5974.00	73.78	260.73	5591.76	1004.48	-1230.69	-748.36	8.92	1911827.91	125829.12	N 36 14 51.66	W 107 31 9.55
	6039.00	73.78	260.22	5628.93	1041.31	-1240.69	-810.72	8.92	1911808.45	125782.02	N 36 14 51.56	W 107 31 10.31
	6103.00	84.77	261.76	5669.28	1073.41	-1250.57	-874.31	8.59	1911799.43	125735.09	N 36 14 51.76	W 107 31 11.20
	6168.00	87.80	263.16	5705.80	1104.48	-1260.57	-939.42	4.18	1911789.12	125688.05	N 36 14 51.76	W 107 31 12.26
	6234.00	90.82	264.50	5745.02	1133.37	-1269.79	-1002.95	4.18	1911779.43	125641.40	N 36 14 51.76	W 107 31 13.00
	6299.00	91.36	266.16	5786.56	1161.40	-1277.06	-1063.15	2.02	1911770.82	125594.45	N 36 14 51.76	W 107 31 13.75
	6365.00	91.10	268.32	5829.09	1187.69	-1282.72	-1121.87	2.89	1911766.13	125547.15	N 36 14 51.76	W 107 31 14.49
	6432.00	91.63	270.44	5872.02	1212.89	-1287.70	-1178.82	0.88	1911758.42	125499.55	N 36 14 51.29	W 107 31 15.24
	6500.00	91.64	271.53	5915.91	1237.00	-1292.00	-1232.81	1.74	1911750.28	125452.61	N 36 14 51.30	W 107 31 15.98
	6569.00	92.33	272.35	5959.78	1259.28	-1294.06	-1284.54	3.43	1911739.05	125405.68	N 36 14 51.30	W 107 31 16.76
	6639.00	92.33	272.35	5999.78	1287.41	-1274.06	-1339.48	2.66	1911739.05	125358.68	N 36 14 51.35	W 107 31 17.54
	6709.00	91.45	272.28	6039.24	1311.31	-1269.61	-1394.40	1.69	1911729.19	125311.77	N 36 14 51.37	W 107 31 18.32
	6780.00	90.75	272.28	6079.24	1335.37	-1260.57	-1449.40	1.99	1911720.25	125264.87	N 36 14 51.37	W 107 31 19.10
	6850.00	91.45	272.33	6119.24	1359.48	-1250.57	-1504.40	1.39	1911808.29	125217.96	N 36 14 51.44	W 107 31 20.87
	6921.00	91.45	272.33	6159.24	1383.59	-1240.57	-1559.40	1.27	1911808.29	125171.05	N 36 14 51.44	W 107 31 22.54
	6992.00	91.80	272.33	6199.24	1407.79	-1230.57	-1614.40	0.74	1911815.15	125124.14	N 36 14 51.46	W 107 31 24.22
	7063.00	92.07	272.33	6239.24	1431.99	-1220.57	-1669.40	1.08	1911815.15	125077.24	N 36 14 51.46	W 107 31 25.90
	7134.00	91.54	272.33	6279.24	1456.16	-1210.57	-1724.40	0.90	1911822.84	125030.33	N 36 14 51.51	W 107 31 23.80
	7205.00	91.54	272.33	6319.24	1480.31	-1200.57	-1779.40	1.24	1911822.84	124983.42	N 36 14 51.51	W 107 31 24.88
	7276.00	90.75	272.37	6359.24	1504.48	-1190.57	-1834.40	0.30	1911822.84	124936.51	N 36 14 51.51	W 107 31 25.86
	7347.00	90.75	272.37	6399.24	1528.63	-1180.57	-1889.40	3.48	1911828.86	124889.60	N 36 14 51.60	W 107 31 25.86
	7418.00	92.42	273.68	6439.24	1552.78	-1170.57	-1944.40	0.71	1911833.42	124842.70	N 36 14 51.60	W 107 31 26.54
	7489.00	92.42	273.68	6479.24	1576.93	-1160.57	-1999.40	2.53	1911833.42	124795.79	N 36 14 51.60	W 107 31 27.62
	7560.00	90.92	272.59	6519.24	1601.08	-1150.57	-2054.40	1.24	1911850.91	124748.88	N 36 14 51.70	W 107 31 28.69
	7631.00	91.54	272.53	6559.24	1625.23	-1140.57	-2109.40	1.98	1911850.91	124701.97	N 36 14 51.68	W 107 31 29.77
	7702.00	90.57	272.33	6599.24	1649.38	-1130.57	-2164.40	2.20	1911843.41	124655.06	N 36 14 51.70	W 107 31 28.47
	7773.00	91.63	271.31	6639.24	1673.53	-1120.57	-2219.40	1.66	1911848.33	124608.15	N 36 14 51.72	W 107 31 29.25
	7844.00	91.63	271.31	6679.24	1697.68	-1110.57	-2274.40	1.66	1911848.33	124561.24	N 36 14 51.74	W 107 31 30.61
	7915.00	90.84	271.52	6719.24	1721.83	-1100.57	-2329.40	2.20	1911848.33	124514.33	N 36 14 51.74	W 107 31 30.61
	7986.00	90.84	271.52	6759.24	1745.98	-1090.57	-2384.40	1.40	1911848.33	124467.42	N 36 14 51.74	W 107 31 31.60
	8057.00	91.36	270.73	6799.24	1770.13	-1080.57	-2439.40	1.61	1911852.51	124420.51	N 36 14 51.76	W 107 31 32.28
	8128.00	92.15	271.24	6839.24	1794.28	-1070.57	-2494.40	1.09	1911852.51	124373.60	N 36 14 51.78	W 107 31 33.16
	8200.00	91.80	271.24	6879.24	1818.43	-1060.57	-2549.40	1.39	1911852.51	124326.69	N 36 14 51.78	W 107 31 33.95
	8271.00	91.80	271.24	6919.24	1842.58	-1050.57	-2604.40	1.61	1911852.51	124279.78	N 36 14 51.78	W 107 31 34.73
	8342.00	92.15	270.52	6959.24	1866.73	-1040.57	-2659.40	1.58	1911856.65	124232.87	N 36 14 51.80	W 107 31 34.73
	8413.00	90.40	270.32	6999.24	1890.88	-1030.57	-2714.40	1.58	1911856.65	124185.96	N 36 14 51.80	W 107 31 35.51
	8484.00	89.56	270.32	7039.24	1915.03	-1020.57	-2769.40	1.58	1911856.65	124139.05	N 36 14 51.80	W 107 31 36.29
	8555.00	89.56	270.32	7079.24	1939.18	-1010.57	-2824.40	1.63	1911856.65	124092.14	N 36 14 51.78	W 107 31 37.07
	8626.00	91.28	267.06	7119.24	1963.33	-1000.57	-2879.40	2.98	1911859.13	124045.23	N 36 14 51.78	W 107 31 37.85
	8697.00	90.22	265.17	7159.24	1987.48	-990.57	-2934.40	1.63	1911859.13	123998.32	N 36 14 51.78	W 107 31 38.63
	8768.00	89.56	265.17	7199.24	2011.63	-980.57	-2989.40	1.63	1911859.13	123951.41	N 36 14 51.78	W 107 31 39.41
	8839.00	89.56	265.17	7239.24	2035.78	-970.57	-3044.40	2.26	1911859.13	123904.50	N 36 14 51.69	W 107 31 40.18
	8910.00	89.56	265.17	7279.24	2059.93	-960.57	-3099.40	1.63	1911859.13	123857.59	N 36 14 51.69	W 107 31 40.96
	8981.00	89.56	265.17	7319.24	2084.08	-950.57	-3154.40	1.63	1911859.13	123810.68	N 36 14 51.77	W 107 31 41.75
	9052.00	91.28	273.41	7359.24	2108.23	-940.57	-3209.40	2.56	1911862.38	123763.77	N 36 14 51.80	W 107 31 42.52
	9123.00	92.15	273.41	7399.24	2132.38	-930.57	-3264.40	1.99	1911862.38	123716.86	N 36 14 51.78	W 107 31 43.29
	9194.00	92.15	273.41	7439.24	2156.53	-920.57	-3319.40	0.99	1911870.76	123670.00	N 36 14 51.85	W 107 31 44.07
	9265.00	92.15	272.85	7479.24	2180.68	-910.57	-3374.40	0.99	1911879.36	123623.14	N 36 14 51.85	W 107 31 44.84
	9336.00	91.10	272.14	7519.24	2204.83	-900.57	-3429.40	2.10	1911888.98	123576.28	N 36 14 51.90	W 107 31 45.62
	9407.00	91.71	273.82	7559.24	2228.98	-890.57	-3484.40	1.03	1911888.98	123529.42	N 36 14 51.95	W 107 31 46.45
	9478.00	92.07	273.82	7599.24	2253.13	-880.57	-3539.40	1.03	1911888.98	123482.56	N 36 14 51.95	W 107 31 47.18
	9549.00	93.12	273.82	7639.24	2277.28	-870.57	-3594.40	2.57	1911896.87	123435.70	N 36 14 52.02	W 107 31 47.96
	9620.00	93.12	273.82	7679.24	2301.43	-860.57	-3649.40	0.78	1911896.87	123388.84	N 36 14 52.08	W 107 31 48.74
	9691.00	93.12	273.82	7719.24	2325.58	-850.57	-3704.40	2.57	1911896.87	123341.93	N 36 14 52.08	W 107 31 49.51
	9762.00	93.12	273.82	7759.24	2349.73	-840.57	-3759.40	0.90	1911902.87	123295.07	N 36 14 52.16	W 107 31 50.28
	9833.00	93.12	273.82	7799.24	2373.88	-830.57	-3814.40	2.86	1911912.85	123248.21	N 36 14 52.16	W 107 31 51.06
	9904.00	93.12	273.82	7839.24	2398.03	-820.57	-3869.40	0.99	1911912.85	123201.35	N 36 14 52.16	W 107 31 51.84
	9975.00	93.12	273.82	7879.24	2422.18	-810.57	-3924.40	1.03	1911912.85	123154.49	N 36 14 52.16	W 107 31 52.62
	10046.00	93.12	273.82	7919.24	2446.33	-800.57	-3979.40	2.10	1911912.85	123107.63	N 36 14 52.16	W 107 31 53.40
	10117.00	93.12	273.82	7959.24	2470.48	-790.57	-4034.40	1.68	1911912.85	123060.77	N 36 14 52.22	W 107 31 54.19
	10188.00	93.12	273.82	7999.24	2494.63	-780.57	-4089.40	1.68	1911912.85	123013.91	N 36 14 52.22	W 107 31 54.97
	10259.00	93.12	273.82	8039.24	2518.78	-770.57	-4144.40	1.68	1911928.34	122967.05	N 36 14 52.24	W 107 31 55.75
	10330.00	93.12	273.82	8079.24	2542.93	-760.57	-4199.40	1.68	1911928.34	122920.19	N 36 14 52.24	W 107 31 56.53
	10401.00	93.12	273.82									