

"As Drilled Plat"

OIL CONS. DIV DIST. 3

RECEIVED

MAY 22 2014

DISTRICT I
1625 N. French Dr., Hobbs, N.M. 88240

State of New Mexico
Energy, Minerals & Natural Resources Department

Form C-102
Revised July, 16, 2010

DISTRICT II
1301 W. Grand Ave., Artesia, N.M. 88210

OIL CONSERVATION DIVISION
1220 South St. Francis Dr.
Santa Fe, NM 87505

Submit one copy to appropriate
District Office

DISTRICT III
1000 Rio Brazos Rd., Aztec, N.M. 87410

Field Office
Bureau of Land Management

DISTRICT IV
1220 South St. Francis Dr., Santa Fe, NM 87505

AMENDED REPORT

WELL LOCATION AND ACREAGE DEDICATION PLAT

¹ API Number 30-045-34781	² Pool Code 71629	³ Pool Name Basin Fruitland Coal
⁴ Property Code 22857	⁵ Property Name OH RANDEL	⁶ Well Number 5H
⁷ GRID No. 5380	⁸ Operator Name XTO ENERGY INC.	⁹ Elevation 6379'

¹⁰ Surface Location

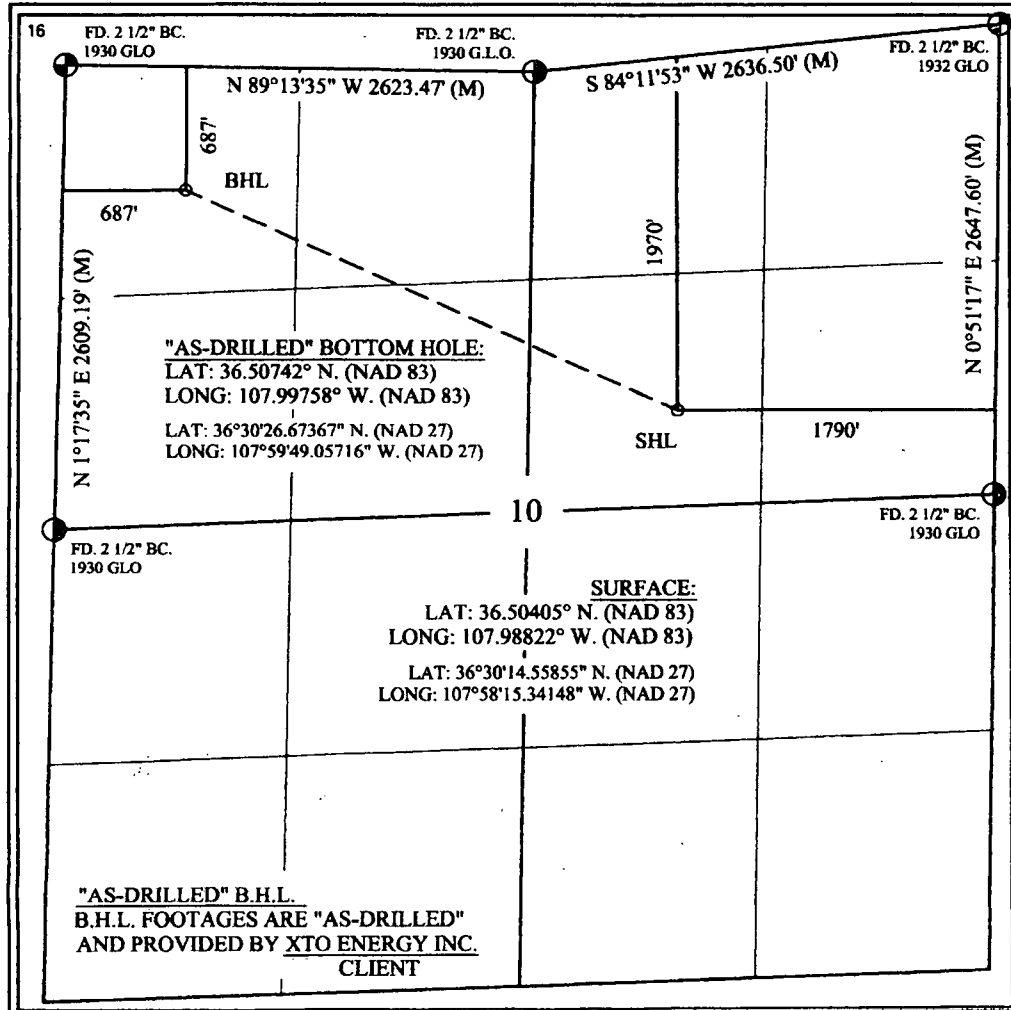
UL or lot no.	Section	Township	Range	Lot Idn	Feet from the	North/South line	Feet from the	East/West line	County
G	10	26-N	11-W		1970	NORTH	1790	EAST	SAN JUAN

¹¹ Bottom Hole Location If Different From Surface

UL or lot no.	Section	Township	Range	Lot Idn	Feet from the	North/South line	Feet from the	East/West line	County
D	10	26-N	11-W		687	NORTH	687	WEST	SAN JUAN

¹² Dedicated Acres 320 Ac., N/2	¹³ Joint or Infill	¹⁴ Consolidation Code	¹⁵ Order No.
---	-------------------------------	----------------------------------	-------------------------

NO ALLOWABLE WILL BE ASSIGNED TO THIS COMPLETION UNTIL ALL INTERESTS HAVE BEEN CONSOLIDATED OR A NON-STANDARD UNIT HAS BEEN APPROVED BY THE DIVISION



17 OPERATOR CERTIFICATION

I hereby certify that the information contained herein is true and complete to the best of my knowledge and belief, and that this organization either owns a working interest or unleased mineral interest in the land including the proposed bottom hole location or has a right to drill this well at this location pursuant to a contract with an owner of such a mineral or working interest, or to a voluntary pooling agreement or a compulsory pooling order heretofore entered by the division.

Sherry J. Morrow 5/8/14
Signature Date

Sherry J. Morrow
Printed Name

Sherry.morrow@xtoenergy.com
E-mail Address

18 SURVEYOR CERTIFICATION

I hereby certify that the well location shown on this plat was plotted from field notes of actual surveys made by me or under my supervision, and that the same is true and correct to the best of my belief.

DEC 10 2010
Date of Survey

Signature and Seal of Professional Surveyor

NEW MEXICO
PROFESSIONAL LAND SURVEYOR
8894
15-11

Certificate Number

PV



OH Randel #5H
San Juan Co., New Mexico



SECTION DETAILS										
Sec	MD	Inc	Azi	TVD	+N/-S	+E/-W	DLeg	TFace	VSec	Target
1	0.00	0.00	293.88	0.00	0.00	0.00	0.00	0.00	0.00	
2	1056.82	0.00	293.88	1056.82	0.00	0.00	0.00	0.00	0.00	
3	2180.57	89.90	293.88	1773.02	289.38	-653.76	8.00	293.88	714.95	
4	4460.94	89.90	293.88	1777.00	1212.39	-2738.98	0.00	0.00	2995.31	PBHL

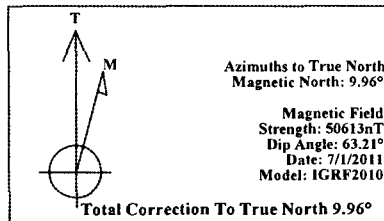
TARGET DETAILS						
Name	TVD	+N/-S	+E/-W	Latitude	Longitude	Shape
PBHL	1777.00	1212.39	-2738.98	36°30'26.568N	107°59'51.142W	Point

WELL DETAILS							
Name	+N/-S	+E/-W	Northing	Easting	Latitude	Longitude	Slot
OH Randel #5H	0.00	0.00	2002821.10	2677576.96	36°30'14.580N	107°59'17.590W	N/A

FIELD DETAILS
San Juan, NM (NAD 83)

Geodetic System: US State Plane Coordinate System 1983
Ellipsoid: GRS 1980
Zone: New Mexico, Western Zone
Magnetic Model: IGRF2010

System Datum: Mean Sea Level
Local North: True North



LEGEND	
	OH Randel #5H, 1, Plan #1
	MSU 524 (1)
	1 Wft Svy

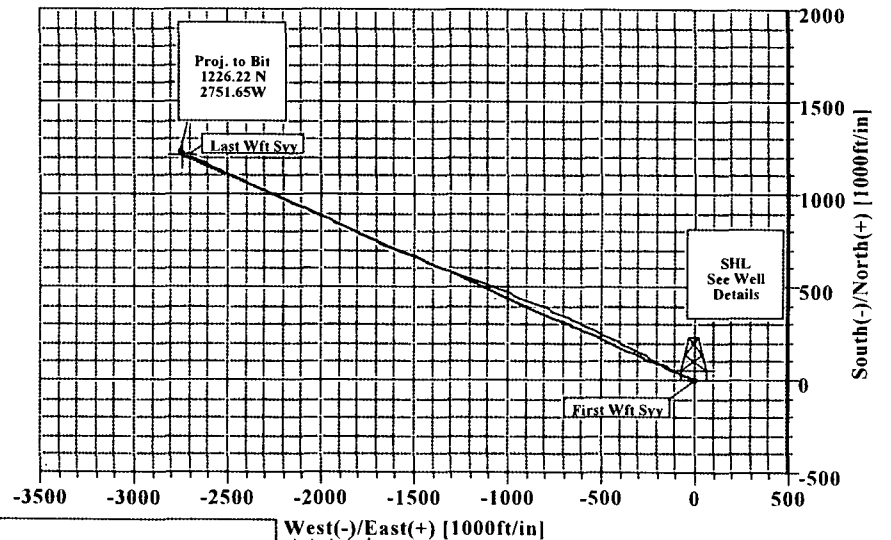
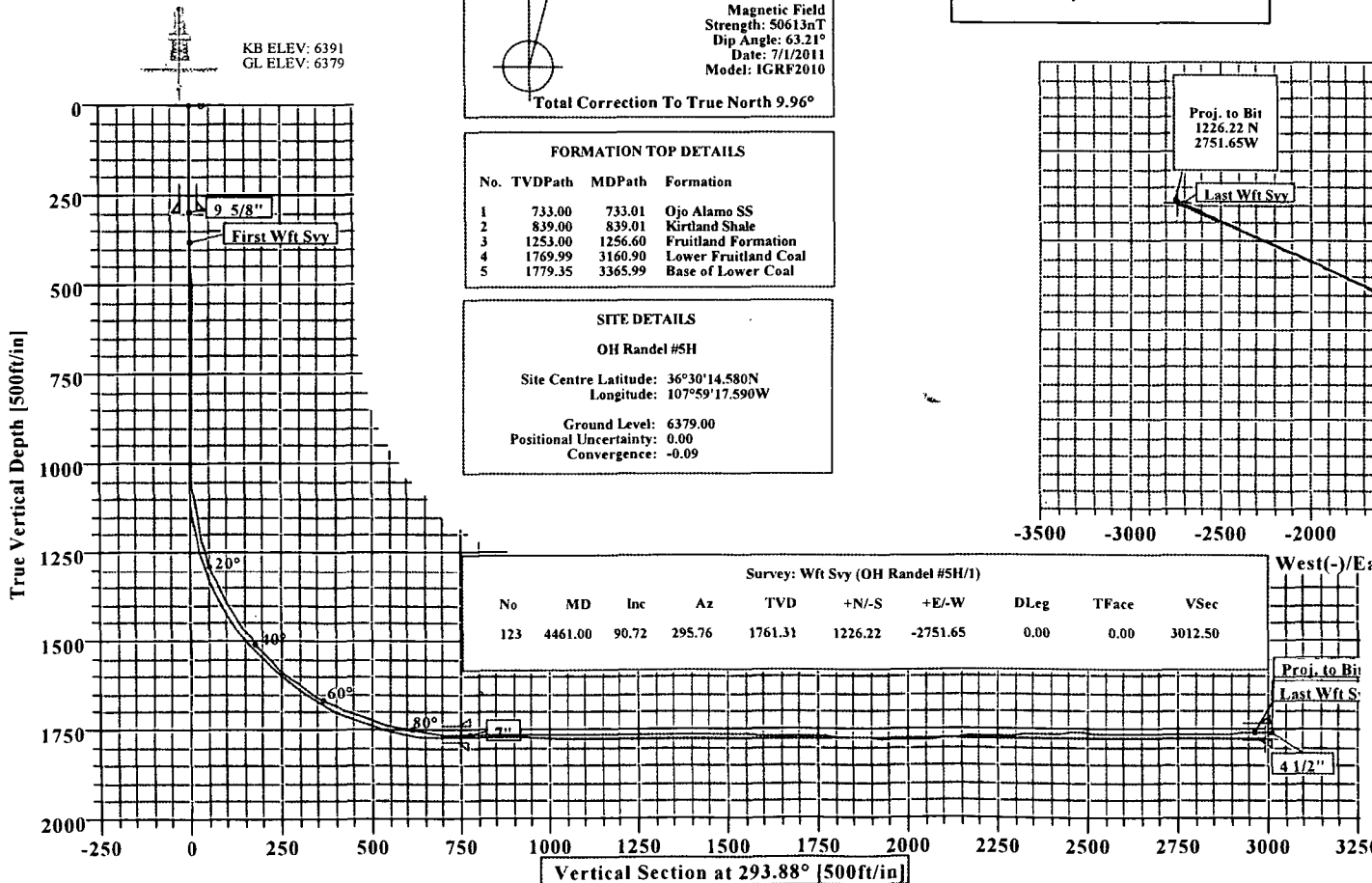
FORMATION TOP DETAILS			
No.	TVDPath	MDPath	Formation
1	733.00	733.01	Ojo Alamo SS
2	839.00	839.01	Kirtland Shale
3	1253.00	1256.60	Fruitland Formation
4	1769.99	3160.90	Lower Fruitland Coal
5	1779.35	3365.99	Base of Lower Coal

SITE DETAILS
OH Randel #5H

Site Centre Latitude: 36°30'14.580N
Longitude: 107°59'17.590W

Ground Level: 6379.00
Positional Uncertainty: 0.00
Convergence: -0.09

Survey: Wft Svy (OH Randel #5H/1)										
No	MD	Inc	Az	TVD	+N/-S	+E/-W	DLeg	TFace	VSec	
123	4461.00	90.72	295.76	1761.31	1226.22	-2751.65	0.00	0.00	3012.50	



Survey: Wft Svy (OH Randel #5H/1)
Created By: Keith Noack
Date: 7/5/2011



Weatherford International Ltd.

WFT Survey Report Lat, Long



Company: XTO	Date: 7/5/2011	Time: 14:49:18	Page: 1
Field: San Juan, NM (NAD 83)	Co-ordinate(NE) Reference: Well: OH Randel #5H, True North		
Site: OH Randel #5H	Vertical (TVD) Reference: SITE 6391.0		
Well: OH Randel #5H	Section (VS) Reference: Well (0.00N,0.00E,293.88Azi)		
Wellpath: 1	Survey Calculation Method: Minimum Curvature	Db: Sybase	

Survey: Wft Svy	Start Date: 6/27/2011
Company: Weatherford International Ltd.	Engineer: Russell W. Joyner
Tool: MWD;MWD - Standard	Tied-to: From Surface

Field: San Juan, NM (NAD 83)	
Map System: US State Plane Coordinate System 1983	Map Zone: New Mexico, Western Zone
Geo Datum: GRS 1980	Coordinate System: Well Centre
Sys Datum: Mean Sea Level	Geomagnetic Model: IGRF2010

Site: OH Randel #5H		
Site Position:	Northing: 2002821.10 ft	Latitude: 36 30 14.580 N
From: Geographic	Easting: 2677576.96 ft	Longitude: 107 59 17.590 W
Position Uncertainty: 0.00 ft		North Reference: True
Ground Level: 6379.00 ft		Grid Convergence: -0.09 deg

Well: OH Randel #5H		Slot Name:	
Well Position:	+N/-S 0.00 ft	Northing: 2002821.10 ft	Latitude: 36 30 14.580 N
	+E/-W 0.00 ft	Easting: 2677576.96 ft	Longitude: 107 59 17.590 W
Position Uncertainty: 0.00 ft			

Wellpath: 1		Drilled From: Surface	
		Tie-on Depth: 0.00 ft	
Current Datum: SITE	Height 6391.00 ft	Above System Datum: Mean Sea Level	
Magnetic Data: 7/1/2011		Declination: 9.96 deg	
Field Strength: 50613 nT		Mag Dip Angle: 63.21 deg	
Vertical Section:	+N/-S	+E/-W	Direction
Depth From (TVD) ft	ft	ft	deg
0.00	0.00	0.00	293.88

Survey														
MD	Incl	Azim	TVD	N/S	E/W	VS	DLS	Lat	Min	Sec	Long	Min	Sec	Comment
ft	deg	deg	ft	ft	ft	ft	deg/100ft							
0.00	0.00	0.00	0.00	0.00	0.00	0.00	0.00	36	30	14.580	107	59	17.590	
295.00	0.39	281.18	295.00	0.19	-0.98	0.97	0.13	36	30	14.582	107	59	17.602	9 5/8"
382.00	0.50	281.18	382.00	0.32	-1.64	1.63	0.13	36	30	14.583	107	59	17.610	First Wft Sv
446.00	0.51	274.60	445.99	0.40	-2.19	2.17	0.09	36	30	14.584	107	59	17.617	
507.00	0.44	278.30	506.99	0.46	-2.70	2.65	0.13	36	30	14.585	107	59	17.623	
569.00	0.33	265.52	568.99	0.48	-3.11	3.04	0.22	36	30	14.585	107	59	17.628	
631.00	0.38	276.21	630.99	0.48	-3.49	3.39	0.13	36	30	14.585	107	59	17.633	
694.00	0.31	258.46	693.99	0.47	-3.87	3.73	0.20	36	30	14.585	107	59	17.637	
758.00	0.25	256.71	757.99	0.41	-4.17	3.98	0.09	36	30	14.584	107	59	17.641	
820.00	0.31	265.84	819.99	0.36	-4.47	4.23	0.12	36	30	14.584	107	59	17.645	
882.00	0.31	271.46	881.98	0.36	-4.81	4.54	0.05	36	30	14.584	107	59	17.649	
945.00	0.31	282.71	944.98	0.40	-5.14	4.86	0.10	36	30	14.584	107	59	17.653	
976.00	0.31	269.71	975.98	0.41	-5.31	5.02	0.23	36	30	14.584	107	59	17.655	
1007.00	0.49	282.24	1006.98	0.44	-5.52	5.23	0.64	36	30	14.584	107	59	17.658	
1038.00	1.82	306.38	1037.98	0.76	-6.05	5.84	4.48	36	30	14.588	107	59	17.664	
1068.00	3.75	303.09	1067.94	1.58	-7.25	7.27	6.45	36	30	14.596	107	59	17.679	
1099.00	5.88	298.72	1098.83	2.90	-9.49	9.86	6.97	36	30	14.609	107	59	17.706	
1129.00	8.11	298.30	1128.60	4.64	-12.71	13.50	7.44	36	30	14.626	107	59	17.746	
1159.00	10.13	298.21	1158.22	6.89	-16.89	18.24	6.73	36	30	14.648	107	59	17.797	
1190.00	12.31	298.46	1188.63	9.75	-22.20	24.25	7.03	36	30	14.676	107	59	17.862	
1221.00	14.69	297.84	1218.77	13.16	-28.58	31.47	7.69	36	30	14.710	107	59	17.940	
1251.00	16.75	296.21	1247.65	16.85	-35.83	39.58	7.02	36	30	14.747	107	59	18.029	
1282.00	18.94	294.84	1277.15	20.94	-44.40	49.08	7.19	36	30	14.787	107	59	18.134	
1312.00	21.10	294.20	1305.34	25.20	-53.75	59.35	7.24	36	30	14.829	107	59	18.248	



Weatherford International Ltd.

WFT Survey Report Lat, Long



Company: XTO Field: San Juan, NM (NAD 83) Site: OH Randel #5H Well: OH Randel #5H Wellpath: 1	Date: 7/5/2011 Co-ordinate(NE) Reference: Well: OH Randel #5H, True North Vertical (TVD) Reference: SITE 6391.0 Section (VS) Reference: Well (0.00N,0.00E,293.88Azi) Survey Calculation Method: Minimum Curvature	Time: 14:49:18 Page: 2 Db: Sybase
--	--	--

Survey

MD ft	Incl deg	Azim deg	TVD ft	N/S ft	E/W ft	VS ft	DLS deg/100ft	Lat	Min	Sec	Long	Min	Sec	Comment
1343.00	23.56	294.46	1334.01	30.05	-64.48	71.12	7.94	36	30	14.877	107	59	18.380	
1373.00	25.94	295.34	1361.25	35.34	-75.87	83.68	8.03	36	30	14.929	107	59	18.519	
1404.00	28.46	295.11	1388.82	41.38	-88.68	97.84	8.14	36	30	14.989	107	59	18.676	
1435.00	30.69	295.34	1415.78	47.90	-102.52	113.14	7.20	36	30	15.054	107	59	18.846	
1466.00	33.00	295.46	1442.11	54.92	-117.30	129.49	7.45	36	30	15.123	107	59	19.027	
1496.00	35.44	295.71	1466.92	62.20	-132.51	146.35	8.15	36	30	15.195	107	59	19.213	
1526.00	38.13	296.09	1490.94	70.05	-148.67	164.30	9.00	36	30	15.273	107	59	19.411	
1557.00	40.75	296.84	1514.88	78.83	-166.30	183.97	8.59	36	30	15.360	107	59	19.627	
1588.00	42.61	297.07	1538.03	88.17	-184.67	204.56	6.02	36	30	15.452	107	59	19.852	
1618.00	44.31	297.46	1559.81	97.63	-203.01	225.16	5.74	36	30	15.545	107	59	20.077	
1649.00	47.63	297.96	1581.35	107.99	-222.74	247.39	10.77	36	30	15.648	107	59	20.318	
1680.00	50.81	298.71	1601.60	119.14	-243.40	270.79	10.42	36	30	15.758	107	59	20.571	
1711.00	53.81	298.83	1620.55	130.94	-264.90	295.23	9.68	36	30	15.875	107	59	20.835	
1742.00	56.31	297.96	1638.30	143.02	-287.25	320.56	8.39	36	30	15.994	107	59	21.109	
1772.00	58.61	297.43	1654.44	154.77	-309.64	345.79	7.81	36	30	16.111	107	59	21.383	
1803.00	60.81	297.34	1670.07	167.09	-333.41	372.51	7.10	36	30	16.232	107	59	21.674	
1834.00	63.69	296.46	1684.50	179.49	-357.88	399.90	9.62	36	30	16.355	107	59	21.974	
1866.00	66.13	296.03	1698.07	192.31	-383.87	428.86	7.72	36	30	16.482	107	59	22.292	
1898.00	68.63	295.96	1710.38	205.25	-410.42	458.37	7.82	36	30	16.610	107	59	22.617	
1929.00	71.22	295.74	1721.02	217.95	-436.62	487.47	8.38	36	30	16.735	107	59	22.938	
1960.00	73.81	295.96	1730.33	230.84	-463.22	517.02	8.38	36	30	16.863	107	59	23.264	
1992.00	76.00	296.09	1738.67	244.39	-490.98	547.89	6.85	36	30	16.997	107	59	23.604	
2024.00	78.06	295.84	1745.85	258.04	-519.02	579.05	6.48	36	30	17.132	107	59	23.948	
2055.00	79.75	295.86	1751.81	271.31	-546.39	609.45	5.45	36	30	17.263	107	59	24.283	
2086.00	81.81	295.71	1756.78	284.62	-573.95	640.03	6.66	36	30	17.395	107	59	24.620	
2117.00	83.94	295.59	1760.62	297.93	-601.67	670.78	6.88	36	30	17.526	107	59	24.960	
2147.00	85.69	294.96	1763.34	310.69	-628.69	700.64	6.20	36	30	17.652	107	59	25.291	
2179.00	87.13	294.34	1765.34	324.01	-657.72	732.58	4.90	36	30	17.784	107	59	25.647	
2190.00	87.93	294.09	1765.81	328.52	-667.74	743.57	7.62	36	30	17.829	107	59	25.769	
2224.00	88.88	293.83	1766.76	342.32	-698.80	777.55	2.90	36	30	17.965	107	59	26.150	7"
2255.00	89.75	293.59	1767.13	354.78	-727.18	808.55	2.90	36	30	18.088	107	59	26.498	
2287.00	89.94	293.46	1767.22	367.55	-756.52	840.55	0.72	36	30	18.215	107	59	26.857	
2319.00	90.31	293.21	1767.15	380.23	-785.90	872.55	1.40	36	30	18.340	107	59	27.217	
2350.00	90.63	293.16	1766.89	392.43	-814.40	903.54	1.04	36	30	18.461	107	59	27.566	
2382.00	90.81	292.71	1766.49	404.90	-843.86	935.54	1.51	36	30	18.584	107	59	27.927	
2414.00	90.56	292.09	1766.11	417.10	-873.45	967.52	2.09	36	30	18.705	107	59	28.289	
2446.00	90.75	291.59	1765.74	429.00	-903.15	999.50	1.67	36	30	18.822	107	59	28.653	
2478.00	89.38	291.59	1765.71	440.77	-932.90	1031.47	4.28	36	30	18.939	107	59	29.018	
2509.00	88.94	292.34	1766.16	452.37	-961.65	1062.45	2.80	36	30	19.053	107	59	29.370	
2541.00	89.87	289.75	1766.49	463.86	-991.51	1094.41	8.60	36	30	19.167	107	59	29.735	
2573.00	90.19	293.21	1766.48	475.57	-1021.28	1126.38	10.86	36	30	19.283	107	59	30.100	
2605.00	90.38	292.83	1766.32	488.09	-1050.73	1158.37	1.33	36	30	19.407	107	59	30.461	
2637.00	89.69	291.84	1766.30	500.25	-1080.33	1190.36	3.77	36	30	19.527	107	59	30.824	
2668.00	90.00	291.46	1766.38	511.68	-1109.15	1221.34	1.58	36	30	19.640	107	59	31.176	
2700.00	90.50	291.46	1766.24	523.39	-1138.93	1253.31	1.56	36	30	19.756	107	59	31.541	
2732.00	90.83	291.06	1765.87	534.99	-1168.75	1285.27	1.62	36	30	19.870	107	59	31.907	
2763.00	90.69	289.84	1765.46	545.82	-1197.79	1316.21	3.96	36	30	19.977	107	59	32.262	
2793.00	90.94	289.71	1765.03	555.97	-1226.02	1346.13	0.94	36	30	20.078	107	59	32.608	
2824.00	90.44	289.21	1764.66	566.30	-1255.24	1377.04	2.28	36	30	20.180	107	59	32.966	
2854.00	89.44	289.96	1764.69	576.35	-1283.51	1406.95	4.17	36	30	20.279	107	59	33.312	
2885.00	88.06	289.84	1765.37	586.90	-1312.65	1437.87	4.47	36	30	20.384	107	59	33.669	
2915.00	88.17	289.97	1766.35	597.11	-1340.84	1467.78	0.57	36	30	20.485	107	59	34.015	



Weatherford International Ltd.

WFT Survey Report Lat, Long



Company: XTO	Date: 7/5/2011	Time: 14:49:18	Page: 3
Field: San Juan, NM (NAD 83)	Co-ordinate(NE) Reference: Well: OH Randel #5H, True North		
Site: OH Randel #5H	Vertical (TVD) Reference: SITE 6391.0		
Well: OH Randel #5H	Section (VS) Reference: Well (0.00N,0.00E,293.88Azi)		
Wellpath: 1	Survey Calculation Method: Minimum Curvature	Db: Sybase	

Survey

MD ft	Incl deg	Azim deg	TVD ft	N/S ft	E/W ft	VS ft	DLS deg/100ft	Lat	Min	Sec	Long	Min	Sec	Comment
2946.00	88.31	290.21	1767.30	607.76	-1369.94	1498.70	0.90	36	30	20.590	107	59	34.371	
2977.00	89.31	291.46	1767.95	618.78	-1398.91	1529.65	5.16	36	30	20.699	107	59	34.726	
3007.00	89.63	291.46	1768.23	629.75	-1426.83	1559.62	1.07	36	30	20.807	107	59	35.068	
3038.00	89.51	290.96	1768.46	640.97	-1455.73	1590.59	1.66	36	30	20.918	107	59	35.422	
3068.00	89.31	290.84	1768.77	651.67	-1483.75	1620.55	0.78	36	30	21.024	107	59	35.765	
3099.00	89.88	291.34	1768.99	662.82	-1512.67	1651.51	2.45	36	30	21.134	107	59	36.120	
3130.00	89.38	292.71	1769.19	674.45	-1541.41	1682.49	4.70	36	30	21.249	107	59	36.472	
3160.00	87.69	292.96	1769.95	686.09	-1569.05	1712.47	5.69	36	30	21.364	107	59	36.810	
3190.00	87.43	292.70	1771.23	697.72	-1596.67	1742.44	1.23	36	30	21.479	107	59	37.149	
3221.00	87.31	292.71	1772.65	709.67	-1625.24	1773.40	0.39	36	30	21.597	107	59	37.499	
3252.00	87.38	292.96	1774.09	721.69	-1653.78	1804.36	0.84	36	30	21.716	107	59	37.848	
3282.00	87.31	294.71	1775.48	733.80	-1681.19	1834.33	5.83	36	30	21.836	107	59	38.184	
3312.00	87.06	294.71	1776.95	746.32	-1708.41	1864.29	0.83	36	30	21.960	107	59	38.517	
3343.00	87.58	295.30	1778.40	759.41	-1736.47	1895.25	2.54	36	30	22.089	107	59	38.861	
3374.00	87.75	294.96	1779.67	772.57	-1764.52	1926.22	1.23	36	30	22.219	107	59	39.205	
3404.00	89.25	295.46	1780.45	785.34	-1791.65	1956.20	5.27	36	30	22.346	107	59	39.537	
3435.00	90.06	295.58	1780.64	798.69	-1819.62	1987.19	2.64	36	30	22.478	107	59	39.880	
3457.00	90.69	295.33	1780.49	808.15	-1839.49	2009.18	3.08	36	30	22.571	107	59	40.123	
3486.00	91.56	295.42	1779.92	820.58	-1865.68	2038.16	3.02	36	30	22.694	107	59	40.444	
3517.00	93.06	295.05	1778.67	833.78	-1893.70	2069.13	4.98	36	30	22.825	107	59	40.787	
3549.00	93.81	294.71	1776.76	847.22	-1922.68	2101.06	2.57	36	30	22.958	107	59	41.142	
3581.00	93.88	294.09	1774.61	860.41	-1951.76	2132.99	1.95	36	30	23.088	107	59	41.498	
3613.00	93.19	294.46	1772.64	873.54	-1980.87	2164.93	2.45	36	30	23.218	107	59	41.855	
3644.00	92.94	294.09	1770.98	886.27	-2009.09	2195.88	1.44	36	30	23.344	107	59	42.201	
3678.00	91.38	294.33	1769.70	900.20	-2040.08	2229.86	4.64	36	30	23.481	107	59	42.580	
3710.00	90.69	294.21	1769.12	913.35	-2069.24	2261.85	2.19	36	30	23.611	107	59	42.938	
3742.00	91.20	294.22	1768.59	926.47	-2098.42	2293.85	1.59	36	30	23.741	107	59	43.295	
3773.00	92.19	293.96	1767.68	939.12	-2126.71	2324.83	3.30	36	30	23.866	107	59	43.642	
3805.00	92.38	293.71	1766.40	952.04	-2155.96	2356.81	0.98	36	30	23.994	107	59	44.000	
3837.00	92.75	293.96	1764.97	964.96	-2185.20	2388.77	1.40	36	30	24.122	107	59	44.358	
3869.00	91.94	293.71	1763.66	977.88	-2214.45	2420.75	2.65	36	30	24.249	107	59	44.716	
3901.00	91.00	294.71	1762.84	991.00	-2243.62	2452.74	4.29	36	30	24.379	107	59	45.074	
3933.00	89.81	294.71	1762.61	1004.37	-2272.69	2484.73	3.72	36	30	24.511	107	59	45.430	
3962.00	87.81	294.42	1763.21	1016.43	-2299.06	2513.72	6.97	36	30	24.631	107	59	45.753	
3994.00	87.56	294.46	1764.51	1029.66	-2328.17	2545.69	0.79	36	30	24.761	107	59	46.109	
4026.00	88.63	293.83	1765.57	1042.74	-2357.35	2577.67	3.88	36	30	24.891	107	59	46.467	
4058.00	89.13	294.33	1766.20	1055.79	-2386.56	2609.67	2.21	36	30	25.020	107	59	46.825	
4089.00	89.25	294.08	1766.63	1068.50	-2414.83	2640.66	0.89	36	30	25.145	107	59	47.171	
4121.00	89.50	294.33	1766.98	1081.62	-2444.02	2672.66	1.10	36	30	25.275	107	59	47.529	
4151.00	90.00	294.75	1767.11	1094.08	-2471.31	2702.66	2.18	36	30	25.398	107	59	47.863	
4184.00	90.36	294.99	1767.01	1107.96	-2501.25	2735.65	1.31	36	30	25.536	107	59	48.230	
4217.00	90.69	294.84	1766.71	1121.86	-2531.17	2768.65	1.10	36	30	25.673	107	59	48.596	
4247.00	91.00	294.96	1766.27	1134.49	-2558.38	2798.64	1.11	36	30	25.798	107	59	48.930	
4279.00	91.63	295.33	1765.53	1148.08	-2587.34	2830.62	2.28	36	30	25.932	107	59	49.284	
4313.00	92.00	295.08	1764.45	1162.55	-2618.09	2864.60	1.31	36	30	26.075	107	59	49.661	
4343.00	91.52	295.56	1763.53	1175.38	-2645.19	2894.57	2.26	36	30	26.202	107	59	49.993	
4376.00	91.56	295.07	1762.65	1189.48	-2675.01	2927.55	1.49	36	30	26.342	107	59	50.358	
4413.00	90.72	295.76	1761.91	1205.36	-2708.43	2964.53	2.94	36	30	26.499	107	59	50.768	Last Wft Svy
4461.00	90.72	295.76	1761.31	1226.22	-2751.65	3012.50	0.00	36	30	26.705	107	59	51.297	4 1/2"



Weatherford International Ltd.
WFT Survey Report Lat, Long



Company: XTO	Date: 7/5/2011	Time: 14:49:18	Page: 4
Field: San Juan, NM (NAD 83)	Co-ordinate(NE) Reference:	Well: OH Randel #5H, True North	
Site: OH Randel #5H	Vertical (TVD) Reference:	SITE 6391.0	
Well: OH Randel #5H	Section (VS) Reference:	Well (0.00N,0.00E,293.88Azi)	
Wellpath: 1	Survey Calculation Method:	Minimum Curvature	Db: Sybase

Casing Points

MD ft	TVD ft	Diameter in	Hole Size in	Name
295.00	295.00	9.625	12.250	9 5/8"
2224.00	1766.76	7.000	8.750	7"
4460.93	1761.31	4.500	6.125	4 1/2"

Annotation

MD ft	TVD ft	
382.00	382.00	First Wft Svy
4413.00	1761.91	Last Wft Svy
4461.00	1761.31	Proj. to Bit

Formations

MD ft	TVD ft	Formations	Lithology	Dip Angle deg	Dip Direction deg
733.01	733.00	Ojo Alamo SS		0.00	0.00
839.01	839.00	Kirtland Shale		0.00	0.00
1256.60	1253.00	Fruitland Formation		0.00	0.00
3160.90	1769.99	Lower Fruitland Coal		0.10	293.00
3365.99	1779.35	Base of Lower Coal		0.10	293.00