

60-5
(7)UNITED STATES
DEPARTMENT OF THE INTERIOR
BUREAU OF LAND MANAGEMENTFORM APPROVED
OMB NO. 1004-0137
Expires July 31, 2010

SUNDRY NOTICES AND REPORTS ON WELLS

Do not use this form for proposals to drill or to re-enter an abandoned well. Use Form 3160-3 (APD) for such proposals.

SUBMIT IN TRIPLICATE - Other instructions on page 2

5. Lease Serial No.

NMSF 081239

6. If Indian, Allottee or Tribe Name

7. If Unit or CA/Agreement, Name and/or No.
NMMI04817

1. Type of Well

☐ Oil Well ☒ Gas Well ☐ Other

MAY 29 2014

2. Name of Operator

XTO ENERGY INC.

Fairmount Field Office

3a. Address

382 CR 3100 AZTEC, NM 87410

3b. Phone No. (include area code)

505-333-3100

8. Well Name and No.

LC KELLY #15R

9. API Well No.

30-045-34168

10. Field and Pool, or Exploratory Area

11. County or Parish, State

SAN JUAN NM

12. CHECK APPROPRIATE BOX(ES) TO INDICATE NATURE OF NOTICE, REPORT, OR OTHER DATA

TYPE OF SUBMISSION

☒ Notice of Intent☐ Subsequent Report☐ Final Abandonment Notice

TYPE OF ACTION

☐ Acidize☐ Alter Casing☐ Casing Repair☐ Change Plans☐ Convert to Injection☐ Deepen☐ Fracture Treat☐ New Construction☒ Plug and Abandon☐ Plug Back☐ Production (Start/Resume)☐ Reclamation☐ Recomplete☐ Temporarily Abandon☐ Water Disposal☐ Water Shut-Off☐ Well Integrity☐ Other

13. Describe Proposed or Completed Operation (clearly state all pertinent details, including estimated starting date of any proposed work and approximate duration thereof. If the proposal is to deepen directionally or recomple horizontally, give subsurface locations and measured and true vertical depths of all pertinent markers and zones. Attach the Bond under which the work will be performed or provide the Bond No. on file with BLM/BIA. Required subsequent reports shall be filed within 30 days following completion of the involved operations. If the operation results in a multiple completion or recomple in a new interval, a Form 3160-4 shall be filed once testing has been completed. Final Abandonment Notices shall be filed only after all requirements, including reclamation, have been completed, and the operator has determined that the final site is ready for final inspection.)

XTO Energy Inc. intends to plug and abandon this well per the attached procedure and will be using a Closed Loop System. Please see also, the attached current and proposed wellbore diagrams and surface reclamation plan.

OIL CONS. DIV DIST. 3

JUN 06 2014

BLM'S APPROVAL OR ACCEPTANCE OF THIS ACTION DOES NOT RELIEVE THE LESSEE AND OPERATOR FROM OBTAINING ANY OTHER AUTHORIZATION REQUIRED FOR OPERATIONS ON FEDERAL AND INDIAN LANDS

SEE ATTACHED FOR
CONDITIONS OF APPROVAL

Notify NMOCD 24 hrs
prior to beginning
operations

14. I hereby certify that the foregoing is true and correct
Name (Printed/Typed)

KRISTEN D. BABCOCK

Title REGULATORY ANALYST

Signature

Kristen D. Babcock

Date 5/28/2014

THIS SPACE FOR FEDERAL OR STATE OFFICE USE

Approved by

Troy Salyers

Title

Petroleum Engineer

Date

6/3/2014

Conditions of approval, if any, are attached. Approval of this notice does not warrant or certify that the applicant holds legal or equitable title to those rights in the subject lease which would entitle the applicant to conduct operations thereon.

Office

FFO

Title 18 U.S.C. Section 1001, and Title 43 U.S.C. Section 1212, makes it a crime for any person knowingly and willfully to make to any department or agency of the United States any false, fictitious or fraudulent statements or representations as to any matter within its jurisdiction.

LC Kelly #15R
Sec 4, T 30 N, R 12 W
San Juan County, New Mexico
3/24/2014

Plug and Abandon Procedure

AFE Number: 1404166

Spud Date: 5/15/2007

Surface Casing: 8-5/8", 24#, J-55 csg @ 239'. Cmt'd w/214 sx. Circ 15 bbls to surf.

Production Casing: 5-1/2", 15.5#, J-55 csg @ 2,343'. Cmt'd w/277 sx. Circ 15 bbls cmt to surf.
Capacity: .0238 bbls/ft or .9997 gal/ft

Production Tubing: 2-3/8" string. SN @ 2,140'. EOT @ 2,172'.

Rod String: 3/4" string

Pump: 1-1/2" insert pump

Perforations: Fruitland Coal: 2,005' – 2,114'

PBTD: 2,365'

Recent Production: INA since 7/27/2012. 30 mcfpd, 120 bwpd.

Notify NMOCD & BLM 24 hours prior to beginning plugging operations

1. Check for COA's and approved NOI before beginning operations.
2. Test rig anchors.
3. Set flowback tank.
4. MIRU completion rig. Review JSA.
5. Kill well.
6. TOH & LD rods & pump.
7. ND WH. NU & FT BOP.
8. TOH tubing.
9. TIH 4-3/4" bit & 4-3/4" string mill to 2,005'. TOH.

10. TIH 5-1/2" CR and set @ $\pm 1,955'$. PT tubing. Sting out of CR and circulate hole clean.
11. PT casing and CR to 550 psig. If casing does not test, contact engineer.
12. MIRU cement truck. Review JSA.
13. **Perforation Isolation & Fruitland Coal Top Plug (1955' – 1,438')**: Pump 65 sx Class "B" cement (15.6 ppg, 1.18 cuft/sx yield) down tubing and spot a balanced plug from 1,955' – 1,438' (volume calculated with 50' excess).
14. **Kirtland & Ojo Alamo Top Plugs (580' – 439')**: Pump 25 sx Class "B" cement (15.6 ppg, 1.18 cuft/sx yield) down tubing and spot a balanced plug from 580' – 439' (volume calculated with 50' excess).
15. **Surface Plug (289' – Surface)**: Pump 35 sx Class "B" cement (15.6 ppg, 1.18 cuft/sx yield) down tubing and spot a balanced plug from 289' – Surface (volume calculated with 50' excess).
16. TOH & LD tubing.
17. RDMO cement truck.
18. WOC 4 hours.
19. Cut off WH. Fill in casing as needed with cement. Install above ground P&A marker.
20. Cut off anchors and reclaim location.

Checklist

Regulatory:

1. NOI to P&A on form C-103 & 3160-5
2. Submit a post-work sundry on form C-103 & 3160-5 which details the P&A work and location work within 30 days of completing all required restoration work.

Equipment:

1. 1 flowback tank
2. If tbg doesn't PT, 2,005' 2-3/8" workstring
3. 5-1/2" cement retainer
4. 4-1/2" string mill
5. 125 sx Class "B" cement
6. 1 above ground marker

Services:

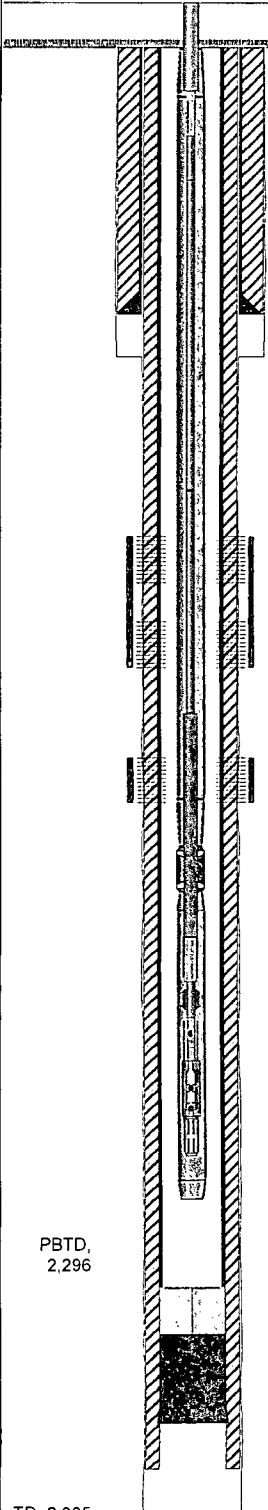
1. Completion rig
2. Cement truck

XTO - Wellbore Diagram

Well Name: LC Kelly 15R

API/UWI	E/W Dist (ft)	E/W Ref	N/S Dist (ft)	N/S Ref	Location	Field Name	County	State/Province
30045341680000	1,725.0	FWL	2,450.0	FNL	T30N-R12W-S04	Basin Fruitland Coal	San Juan	New Mexico
Well Configuration Type	XTO ID B	Orig KB Elev (ft)	Gr Elev (ft)	KB-Grd (ft)	Spud Date	PBTD (All) (ftKB)	Total Depth (ftKB)	Method Of Production
Vertical	96641	5,857.00	5,851.00	6.00	5/16/2007	Original Hole - 2296.0	2,365.0	Beam

Well: Config: Vertical Original Hole: 5/15/2014 11:30:08 AM

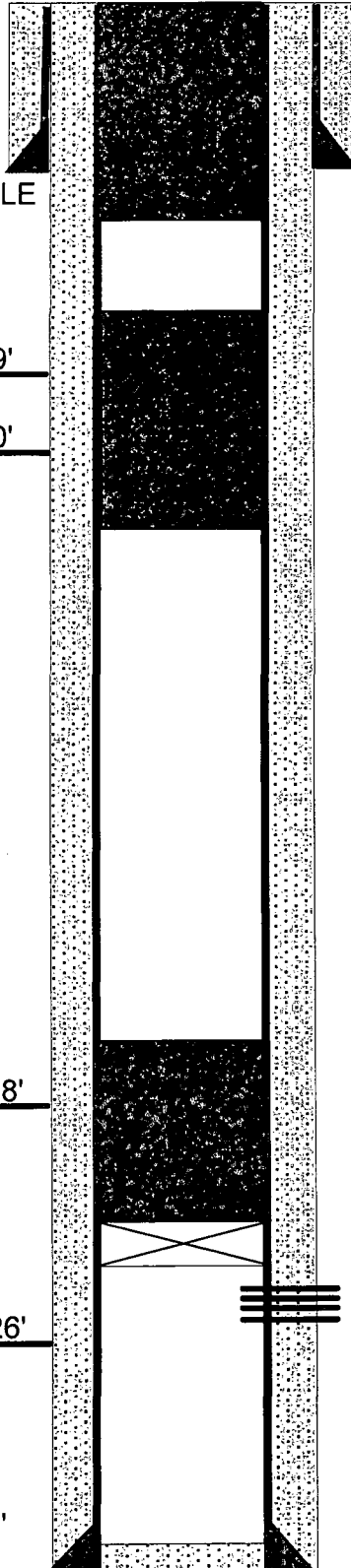
Schematic - Actual		Incl	ftKB (TVD)	ftKB (MD)	Zone	Top (ftKB)	Btm (ftKB)				
		0.0	0	0	Fruitland Coal	2,005.0	2,114.0				
		Casing Strings									
		0.0	6	6	Casing Description	OD (in)	Wt (lbs/ft)	String Grade	Top Connection	Set Depth (ftKB)	
		0.0	16	16	Surface	8 5/8	24.00	J-55	ST&C	239.0	
		0.0	24	24	Casing Description	OD (in)	Wt (lbs/ft)	String Grade	Top Connection	Set Depth (ftKB)	
		0.1	49	49	Production	5 1/2	15.50	J-55	LT&C	2,342.5	
		Cement									
		0.0	24	24	Description	Type	String				
		0.1	49	49	Surface Casing Cement	casing	Surface, 239.0ftKB				
		0.4	192	192	Comment						
		0.4	192	192	Circulated 18 bbls of good cement to surface.						
		0.5	237	237	Description	Type	String				
		0.5	239	239	Production Casing Cement	casing	Production, 2,342.5ftKB				
		0.5	245	245	Comment						
		0.5	245	245	Circulated 10 bbls of good cement to surface.						
		Perforations									
		Date	Top (ftKB)	Btm (ftKB)	Shot Dens (shots/ft)	Hole Diameter (in)	Phasing (%)	Curr Status	Zone		
		7/12/2007	2,005.0	2,009.0	3.0				Fruitland Coal		
		7/12/2007	2,011.0	2,014.0	3.0				Fruitland Coal		
		7/10/2007	2,102.0	2,114.0	3.0				Fruitland Coal		
Tubing Strings											
Tubing Description		Run Date		Set Depth (ftKB)							
Tubing - Production		4/2/2008		2,171.6							
Tubing Components											
Item Description	Jts	Model	OD (in)	Wt (lbs/ft)	Grade	Top Thread	Len (ft)	Top (ftKB)	Btm (ftKB)		
Tubing	65	T&C Upset	2 3/8	4.70	J-55		2,134.46	6.0	2,140.5		
Seat Nipple	1		2 3/8				1.10	2,140.5	2,141.6		
OEMA	1		2 3/8	4.70	J-55		30.00	2,141.6	2,171.6		
Rods											
Rod Description		Run Date		String Length (ft)		Set Depth (ftKB)					
Rod String		4/3/2008		2,162.20		2,162.2					
Rod Components											
Item Description	Jts	Model	OD (in)	Grade	Len (ft)	Top (ftKB)	Btm (ftKB)				
Polished Rod	1		1 1/4		16.00	0.0	16.0				
Rod Sub	1		3/4	D	8.00	16.0	24.0				
Sucker Rod	1	WCN-78	3/4	D	25.00	24.0	49.0				
Sucker Rod	78	WCN-78	3/4	D	1,950.00	49.0	1,999.0				
Sucker Rod w/Molded Guides	3		3/4	D	75.00	1,999.0	2,074.0				
Sinker Bar	3		1 1/4	C	75.00	2,074.0	2,149.0				
Lift Sub	1		1		1.00	2,149.0	2,150.0				
Spiral Rod Guide	1		3/4		0.80	2,150.0	2,150.8				
RHBO Tool	1		3/4		0.40	2,150.8	2,151.2				
Rod Insert Pump	1	RWAC-Z	1 1/2		10.00	2,151.2	2,161.2				
Strainer Nipple	1		1		1.00	2,161.2	2,162.2				
Stimulations & Treatments											
Frac Start Date	Top Perf (ft...)	Bottom Pe...	V (slurry) (...)	Total Prop...	AIR (b...	ATP (psi)	MTP (psi)	ISIP (psi)			
7/11/2007	2102	2114									
Comment											
Frac Start Date	Top Perf (ft...)	Bottom Pe...	V (slurry) (...)	Total Prop...	AIR (b...	ATP (psi)	MTP (psi)	ISIP (psi)			
7/11/2007	2005	2014									
Comment											

LC Kelly #15R
Sec 4, T 30 N, R 12 W
San Juan County, New Mexico

Proposed P&A Diagram

KB: 5,857'
GL: 5,851'
KB CORR: 6'

12-1/4" HOLE



8-5/8", 24#, J-55 CSG @ 239'
CMT'D W/214 SX
CIRC 15 BBLS CMT TO SURF.

7-7/8" HOLE

PLUG #3: CMT FR/289' - SURFACE
(35 SX)

OJO ALAMO TOP @ 489'

KIRTLAND TOP @ 530'

PLUG #2: CMT FR/580' - 439' (25 SX)

FRUITLAND COAL TOP @ 1,488'

PLUG #1: CMT FR/1,955' - 1,438'
(65 SX)

PICTURED CLIFFS TOP @ 2,126'

CR @ 1,955'

FC FR/2,005' - 2,114'

PBTD 2,296'
TD 2,365'

5-1/2", 15.5#, J-55 CSG @ 2,343'
CMT'D W/277 SX
CIRC 15 BBLS CMT TO SURF.

UNITED STATES DEPARTMENT OF THE INTERIOR
BUREAU OF LAND MANAGEMENT
FARMINGTON DISTRICT OFFICE
6251 COLLEGE BLVD.
FARMINGTON, NEW MEXICO 87402

Attachment to notice of
Intention to Abandon:

Re: Permanent Abandonment
Well: LC Kelly #15R

CONDITIONS OF APPROVAL

1. Plugging operations authorized are subject to the attached "General Requirements for Permanent Abandonment of Wells on Federal and Indian Lease."
2. Farmington Office is to be notified at least 24 hours before the plugging operations commence (505) 564-7750.
3. The following modifications to your plugging program are to be made:
 - a) Bring the top of plug #2 to 341' to cover the Ojo Alamo top.

You are also required to place cement excesses per 4.2 and 4.4 of the attached General Requirements.

Office Hours: 7:45 a.m. to 4:30 p.m.