

District I  
1625 N. French Dr., Hobbs, NM 88240  
District II  
811 S. First St., Artesia, NM 88210  
District III  
1000 Rio Brazos Road, Aztec, NM 87410  
District IV  
1220 S. St. Francis Dr., Santa Fe, NM 87505

State of New Mexico  
Energy Minerals and Natural Resources  
Department  
Oil Conservation Division  
1220 South St. Francis Dr.  
Santa Fe, NM 87505

Form C-144  
Revised June 6, 2013

For temporary pits, below-grade tanks, and multi-well fluid management pits, submit to the appropriate NMOCD District Office.  
For permanent pits submit to the Santa Fe Environmental Bureau office and provide a copy to the appropriate NMOCD District Office.

Pit, Below-Grade Tank, or  
Proposed Alternative Method Permit or Closure Plan Application

Type of action: ☐ Below grade tank registration  
☒ Permit of a pit or proposed alternative method  
☐ Closure of a pit, below-grade tank, or proposed alternative method  
☐ Modification to an existing permit/or registration (PIT EXTENSION PERMIT)  
☐ Closure plan only submitted for an existing permitted or non-permitted pit, below-grade tank, or proposed alternative method

**Instructions: Please submit one application (Form C-144) per individual pit, below-grade tank or alternative request**

Please be advised that approval of this request does not relieve the operator of liability should operations result in pollution of surface water, ground water or the environment. Nor does approval relieve the operator of its responsibility to comply with any other applicable governmental authority's rules, regulations or ordinances.

1.  
Operator: ConocoPhillips Compnay OGRID#: 217817  
Address: PO BOX 4289, Farmington, NM 87499  
Facility or well name: Jackson Com IN  
API Number: 30-045-35415 OCD Permit Number: \_\_\_\_\_  
U/L or Qtr/Qtr L(NW/SW) Section 9 Township 28N Range 9W County: San Juan  
Center of Proposed Design: Latitude 36.674028°N Longitude 107.803398°W NAD: ☐ 1927 ☒ 1983  
Surface Owner: ☒ Federal ☐ State ☐ Private ☐ Tribal Trust or Indian Allotment

2.  
☒ **Pit:** Subsection F, G or J of 19.15.17.11 NMAC  
Temporary: ☒ Drilling ☐ Workover  
☐ Permanent ☐ Emergency ☐ Cavitation ☐ P&A ☐ Multi-Well Fluid Management Low Chloride Drilling Fluid ☐ yes ☒ no  
☒ Lined ☐ Unlined Liner type: Thickness 20 mil ☒ LLDPE ☐ HDPE ☐ PVC ☐ Other \_\_\_\_\_  
☒ String-Reinforced  
Liner Seams: ☒ Welded ☒ Factory ☐ Other \_\_\_\_\_ Volume: 7700 bbl Dimensions: L 120' x W 55' x D 12'

3.  
☐ **Below-grade tank:** Subsection I of 19.15.  
Volume: \_\_\_\_\_ bbl Type c  
Tank Construction material: Metal  
☐ Secondary containment with leak detection  
☐ Visible sidewalls and liner ☐ Visible sidewalls only ☐ Other \_\_\_\_\_  
Liner type: Thickness \_\_\_\_\_ mil ☐ HDPE ☐ PVC ☒ Other \_\_\_\_\_

4.  
☐ **Alternative Method:**  
Submittal of an exception request is required. Exceptions must be submitted to the Santa Fe Environmental Bureau office for consideration of approval.

5.  
**Fencing:** Subsection D of 19.15.17.11 NMAC (Applies to permanent pits, temporary pits, and below-grade tanks)  
☐ Chain link, six feet in height, two strands of barbed wire at top (Required if located within 1000 feet of a permanent residence, school, hospital, institution or church)  
☐ Four foot height, four strands of barbed wire evenly spaced between one and four feet  
☒ Alternate. Please specify 4' Field Fence w/ 1 strand barbed wire on top

6.

**Netting:** Subsection E of 19.15.17.11 NMAC (*Applies to permanent pits and permanent open top tanks*)

☐ Screen ☐ Netting ☐ Other \_\_\_\_\_

☐ Monthly inspections (If netting or screening is not physically feasible)

7.

**Signs:** Subsection C of 19.15.17.11 NMAC

☐ 12"x 24", 2" lettering, providing Operator's name, site location, and emergency telephone numbers

☒ Signed in compliance with 19.15.16.8 NMAC

8.

**Variances and Exceptions:**

Justifications and/or demonstrations of equivalency are required. Please refer to 19.15.17 NMAC for guidance.

**Please check a box if one or more of the following is requested, if not leave blank:**

☒ Variance(s): Requests must be submitted to the appropriate division district for consideration of approval.

☐ Exception(s): Requests must be submitted to the Santa Fe Environmental Bureau office for consideration of approval.

9.

**Siting Criteria (regarding permitting):** 19.15.17.10 NMAC

**Instructions:** The applicant must demonstrate compliance for each siting criteria below in the application. Recommendations of acceptable source material are provided below. Siting criteria does not apply to drying pads or above-grade tanks.

**General siting**

**Ground water is less than 25 feet below the bottom of a low chloride temporary pit or below-grade tank.**

- ☐ NM Office of the State Engineer - iWATERS database search; ☐ USGS; ☐ Data obtained from nearby wells

☐ Yes ☒ No  
☐ NA

**Ground water is less than 50 feet below the bottom of a Temporary pit, permanent pit, or Multi-Well Fluid Management pit.**

NM Office of the State Engineer - iWATERS database search; USGS; Data obtained from nearby wells

☐ Yes ☒ No  
☒ NA

Within incorporated municipal boundaries or within a defined municipal fresh water well field covered under a municipal ordinance adopted pursuant to NMSA 1978, Section 3-27-3, as amended. (**Does not apply to below grade tanks**)

- Written confirmation or verification from the municipality; Written approval obtained from the municipality

☐ Yes ☒ No

Within the area overlying a subsurface mine. (**Does not apply to below grade tanks**)

- Written confirmation or verification or map from the NM EMNRD-Mining and Mineral Division

☐ Yes ☒ No

Within an unstable area. (**Does not apply to below grade tanks**)

- Engineering measures incorporated into the design; NM Bureau of Geology & Mineral Resources; USGS; NM Geological Society; Topographic map

☐ Yes ☒ No

Within a 100-year floodplain. (**Does not apply to below grade tanks**)

- FEMA map

☐ Yes ☒ No

**Below Grade Tanks**

Within 100 feet of a continuously flowing watercourse, significant watercourse, lake bed, sinkhole, wetland or playa lake (measured from the ordinary high-water mark).

- Topographic map; Visual inspection (certification) of the proposed site

☐ Yes ☐ No

Within 200 horizontal feet of a spring or a fresh water well used for public or livestock consumption;

- NM Office of the State Engineer - iWATERS database search; Visual inspection (certification) of the proposed site

☐ Yes ☐ No

**Temporary Pit using Low Chloride Drilling Fluid** (maximum chloride content 15,000 mg/liter)

Within 100 feet of a continuously flowing watercourse, or any other significant watercourse or within 200 feet of any lakebed, sinkhole, or playa lake (measured from the ordinary high-water mark). (Applies to low chloride temporary pits.)

- Topographic map; Visual inspection (certification) of the proposed site

☐ Yes ☐ No

Within 300 feet from a occupied permanent residence, school, hospital, institution, or church in existence at the time of initial application.

- Visual inspection (certification) of the proposed site; Aerial photo; Satellite image

☐ Yes ☐ No

Within 200 horizontal feet of a spring or a private, domestic fresh water well used by less than five households for domestic or stock watering purposes, or 300 feet of any other fresh water well or spring, in existence at the time of the initial application.

NM Office of the State Engineer - iWATERS database search; Visual inspection (certification) of the proposed site

☐ Yes ☐ No

Within 100 feet of a wetland.

- US Fish and Wildlife Wetland Identification map; Topographic map; Visual inspection (certification) of the proposed site

☐ Yes ☐ No

### **Temporary Pit Non-low chloride drilling fluid**

Within 300 feet of a continuously flowing watercourse, or any other significant watercourse, or within 200 feet of any lakebed, sinkhole, or playa lake (measured from the ordinary high-water mark).

- Topographic map; Visual inspection (certification) of the proposed site

☐ Yes ☒ No

Within 300 feet from a permanent residence, school, hospital, institution, or church in existence at the time of initial application.

- Visual inspection (certification) of the proposed site; Aerial photo; Satellite image

☐ Yes ☒ No

Within 500 horizontal feet of a spring or a private, domestic fresh water well used by less than five households for domestic or stock watering purposes, or 1000 feet of any other fresh water well or spring, in the existence at the time of the initial application;

- NM Office of the State Engineer - iWATERS database search; Visual inspection (certification) of the proposed site

☐ Yes ☒ No

Within 300 feet of a wetland.

- US Fish and Wildlife Wetland Identification map; Topographic map; Visual inspection (certification) of the proposed site

☐ Yes ☒ No

### **Permanent Pit or Multi-Well Fluid Management Pit**

Within 300 feet of a continuously flowing watercourse, or 200 feet of any other significant watercourse, or lakebed, sinkhole, or playa lake (measured from the ordinary high-water mark).

- Topographic map; Visual inspection (certification) of the proposed site

☐ Yes ☐ No

Within 1000 feet from a permanent residence, school, hospital, institution, or church in existence at the time of initial application.

- Visual inspection (certification) of the proposed site; Aerial photo; Satellite image

☐ Yes ☐ No

Within 500 horizontal feet of a spring or a fresh water well used for domestic or stock watering purposes, in existence at the time of initial application.

- NM Office of the State Engineer - iWATERS database search; Visual inspection (certification) of the proposed site

☐ Yes ☐ No

Within 500 feet of a wetland.

- US Fish and Wildlife Wetland Identification map; Topographic map; Visual inspection (certification) of the proposed site

☐ Yes ☐ No

10.

#### **Temporary Pits, Emergency Pits, and Below-grade Tanks Permit Application Attachment Checklist:** Subsection B of 19.15.17.9 NMAC

**Instructions:** Each of the following items must be attached to the application. Please indicate, by a check mark in the box, that the documents are attached.

- ☐ Hydrogeologic Report (Below-grade Tanks) - based upon the requirements of Paragraph (4) of Subsection B of 19.15.17.9 NMAC
- ☒ Hydrogeologic Data (Temporary and Emergency Pits) - based upon the requirements of Paragraph (2) of Subsection B of 19.15.17.9 NMAC
- ☒ Siting Criteria Compliance Demonstrations - based upon the appropriate requirements of 19.15.17.10 NMAC
- ☒ Design Plan - based upon the appropriate requirements of 19.15.17.11 NMAC
- ☒ Operating and Maintenance Plan - based upon the appropriate requirements of 19.15.17.12 NMAC
- ☒ Closure Plan (Please complete Boxes 14 through 18, if applicable) - based upon the appropriate requirements of Subsection C of 19.15.17.9 NMAC and 19.15.17.13 NMAC

☐ Previously Approved Design (attach copy of design) API Number: \_\_\_\_\_ or Permit Number: \_\_\_\_\_

11.

#### **Multi-Well Fluid Management Pit Checklist:** Subsection B of 19.15.17.9 NMAC

**Instructions:** Each of the following items must be attached to the application. Please indicate, by a check mark in the box, that the documents are attached.

- ☐ Design Plan - based upon the appropriate requirements of 19.15.17.11 NMAC
- ☐ Operating and Maintenance Plan - based upon the appropriate requirements of 19.15.17.12 NMAC
- ☐ A List of wells with approved application for permit to drill associated with the pit.
- ☐ Closure Plan (Please complete Boxes 14 through 18, if applicable) - based upon the appropriate requirements of Subsection C of 19.15.17.9 NMAC and 19.15.17.13 NMAC
- ☐ Hydrogeologic Data - based upon the requirements of Paragraph (4) of Subsection B of 19.15.17.9 NMAC
- ☐ Siting Criteria Compliance Demonstrations - based upon the appropriate requirements of 19.15.17.10 NMAC

☐ Previously Approved Design (attach copy of design) API Number: \_\_\_\_\_ or Permit Number: \_\_\_\_\_

12.

**Permanent Pits Permit Application Checklist:** Subsection B of 19.15.17.9 NMAC**Instructions:** Each of the following items must be attached to the application. Please indicate, by a check mark in the box, that the documents are attached.

- ☐ Hydrogeologic Report - based upon the requirements of Paragraph (1) of Subsection B of 19.15.17.9 NMAC  
☐ Siting Criteria Compliance Demonstrations - based upon the appropriate requirements of 19.15.17.10 NMAC  
☐ Climatological Factors Assessment  
☐ Certified Engineering Design Plans - based upon the appropriate requirements of 19.15.17.11 NMAC  
☐ Dike Protection and Structural Integrity Design - based upon the appropriate requirements of 19.15.17.11 NMAC  
☐ Leak Detection Design - based upon the appropriate requirements of 19.15.17.11 NMAC  
☐ Liner Specifications and Compatibility Assessment - based upon the appropriate requirements of 19.15.17.11 NMAC  
☐ Quality Control/Quality Assurance Construction and Installation Plan  
☐ Operating and Maintenance Plan - based upon the appropriate requirements of 19.15.17.12 NMAC  
☐ Freeboard and Overtopping Prevention Plan - based upon the appropriate requirements of 19.15.17.11 NMAC  
☐ Nuisance or Hazardous Odors, including H<sub>2</sub>S, Prevention Plan  
☐ Emergency Response Plan  
☐ Oil Field Waste Stream Characterization  
☐ Monitoring and Inspection Plan  
☐ Erosion Control Plan  
☐ Closure Plan - based upon the appropriate requirements of Subsection C of 19.15.17.9 NMAC and 19.15.17.13 NMAC

13.

**Proposed Closure:** 19.15.17.13 NMAC**Instructions:** Please complete the applicable boxes, Boxes 14 through 18, in regards to the proposed closure plan.

- Type: ☒ Drilling ☐ Workover ☐ Emergency ☐ Cavitation ☐ P&A ☐ Permanent Pit ☐ Below-grade Tank ☐ Multi-well Fluid Management Pit  
☐ Alternative
- Proposed Closure Method: ☐ Waste Excavation and Removal  
☐ Waste Removal (Closed-loop systems only)  
☒ On-site Closure Method (Only for temporary pits and closed-loop systems)  
☒ In-place Burial ☐ On-site Trench Burial  
☐ Alternative Closure Method

14.

**Waste Excavation and Removal Closure Plan Checklist:** (19.15.17.13 NMAC) **Instructions:** Each of the following items must be attached to the closure plan. Please indicate, by a check mark in the box, that the documents are attached.

- ☐ Protocols and Procedures - based upon the appropriate requirements of 19.15.17.13 NMAC  
☐ Confirmation Sampling Plan (if applicable) - based upon the appropriate requirements of Subsection C of 19.15.17.13 NMAC  
☐ Disposal Facility Name and Permit Number (for liquids, drilling fluids and drill cuttings)  
☐ Soil Backfill and Cover Design Specifications - based upon the appropriate requirements of Subsection H of 19.15.17.13 NMAC  
☐ Re-vegetation Plan - based upon the appropriate requirements of Subsection H of 19.15.17.13 NMAC  
☐ Site Reclamation Plan - based upon the appropriate requirements of Subsection H of 19.15.17.13 NMAC

15.

**Siting Criteria (regarding on-site closure methods only):** 19.15.17.10 NMAC**Instructions:** Each siting criteria requires a demonstration of compliance in the closure plan. Recommendations of acceptable source material are provided below. Requests regarding changes to certain siting criteria require justifications and/or demonstrations of equivalency. Please refer to 19.15.17.10 NMAC for guidance.

Ground water is less than 25 feet below the bottom of the buried waste. - NM Office of the State Engineer - iWATERS database search; USGS; Data obtained from nearby wells	<input type="checkbox"/> Yes <input checked="" type="checkbox"/> No <input type="checkbox"/> NA
Ground water is between 25-50 feet below the bottom of the buried waste - NM Office of the State Engineer - iWATERS database search; USGS; Data obtained from nearby wells	<input type="checkbox"/> Yes <input checked="" type="checkbox"/> No <input type="checkbox"/> NA
Ground water is more than 100 feet below the bottom of the buried waste. - NM Office of the State Engineer - iWATERS database search; USGS; Data obtained from nearby wells	<input checked="" type="checkbox"/> Yes <input type="checkbox"/> No <input type="checkbox"/> NA
Within 100 feet of a continuously flowing watercourse, or 200 feet of any other significant watercourse, lakebed, sinkhole, or playa lake (measured from the ordinary high-water mark). - Topographic map; Visual inspection (certification) of the proposed site	<input type="checkbox"/> Yes <input checked="" type="checkbox"/> No
Within 300 feet from a permanent residence, school, hospital, institution, or church in existence at the time of initial application. - Visual inspection (certification) of the proposed site; Aerial photo; Satellite image	<input type="checkbox"/> Yes <input checked="" type="checkbox"/> No
Within 300 horizontal feet of a private, domestic fresh water well or spring used for domestic or stock watering purposes, in existence at the time of initial application. - NM Office of the State Engineer - iWATERS database; Visual inspection (certification) of the proposed site	<input type="checkbox"/> Yes <input checked="" type="checkbox"/> No
Written confirmation or verification from the municipality; Written approval obtained from the municipality	<input type="checkbox"/> Yes <input checked="" type="checkbox"/> No
Within 300 feet of a wetland. US Fish and Wildlife Wetland Identification map; Topographic map; Visual inspection (certification) of the proposed site	<input type="checkbox"/> Yes <input checked="" type="checkbox"/> No
Within incorporated municipal boundaries or within a defined municipal fresh water well field covered under a municipal ordinance	<input type="checkbox"/> Yes <input checked="" type="checkbox"/> No

adopted pursuant to NMSA 1978, Section 3-27-3, as amended.

- Written confirmation or verification from the municipality; Written approval obtained from the municipality

☐ Yes ☒ No

Within the area overlying a subsurface mine.

- Written confirmation or verification or map from the NM EMNRD-Mining and Mineral Division

☐ Yes ☒ No

Within an unstable area.

- Engineering measures incorporated into the design; NM Bureau of Geology & Mineral Resources; USGS; NM Geological Society; Topographic map

☐ Yes ☒ No

Within a 100-year floodplain.

- FEMA map

☐ Yes ☒ No

16.

**On-Site Closure Plan Checklist:** (19.15.17.13 NMAC) *Instructions: Each of the following items must be attached to the closure plan. Please indicate, by a check mark in the box, that the documents are attached.*

- ☒ Siting Criteria Compliance Demonstrations - based upon the appropriate requirements of 19.15.17.10 NMAC  
☒ Proof of Surface Owner Notice - based upon the appropriate requirements of Subsection E of 19.15.17.13 NMAC  
☐ Construction/Design Plan of Burial Trench (if applicable) based upon the appropriate requirements of Subsection K of 19.15.17.11 NMAC  
☐ Construction/Design Plan of Temporary Pit (for in-place burial of a drying pad) - based upon the appropriate requirements of 19.15.17.11 NMAC  
☒ Protocols and Procedures - based upon the appropriate requirements of 19.15.17.13 NMAC  
☐ Confirmation Sampling Plan (if applicable) - based upon the appropriate requirements of 19.15.17.13 NMAC  
☒ Waste Material Sampling Plan - based upon the appropriate requirements of 19.15.17.13 NMAC  
☒ Disposal Facility Name and Permit Number (for liquids, drilling fluids and drill cuttings or in case on-site closure standards cannot be achieved)  
☒ Soil Cover Design - based upon the appropriate requirements of Subsection H of 19.15.17.13 NMAC  
☒ Re-vegetation Plan - based upon the appropriate requirements of Subsection H of 19.15.17.13 NMAC  
☒ Site Reclamation Plan - based upon the appropriate requirements of Subsection H of 19.15.17.13 NMAC

17.

**Operator Application Certification:**

I hereby certify that the information submitted with this application is true, accurate and complete to the best of my knowledge and belief.

Name (Print): Arleen White

Title: Staff Regulatory Technician

Signature: Arleen White

Date: 7/8/14

e-mail address: arleen.r.white@conocophillips.com

Telephone: 505-326-9517

18.

**OCD Approval:** ☐ Permit Application (

) ☐ OCD Conditions (see attachment)

OCD Representative Signature: \_\_\_\_\_

Approval Date: \_\_\_\_\_

Title: \_\_\_\_\_

Permit Number: \_\_\_\_\_

**DENIED**

19.

**Closure Report (required within 60 days of closure completion):** 19.15.17.13 NMAC

*Instructions: Operators are required to obtain an approved closure plan prior to implementing any closure activities and submitting the closure report. The closure report is required to be submitted to the division within 60 days of the completion of the closure activities. Please do not complete this section of the form until an approved closure plan has been obtained and the closure activities have been completed.*

☐ Closure Completion Date: \_\_\_\_\_

20.

**Closure Method:**

- ☐ Waste Excavation and Removal ☐ On-Site Closure Method ☐ Alternative Closure Method ☐ Waste Removal (Closed-loop systems only)  
☐ If different from approved plan, please explain.

21.

**Closure Report Attachment Checklist:** *Instructions: Each of the following items must be attached to the closure report. Please indicate, by a check mark in the box, that the documents are attached.*

- ☐ Proof of Closure Notice (surface owner and division)  
☐ Proof of Deed Notice (required for on-site closure for private land only)  
☐ Plot Plan (for on-site closures and temporary pits)  
☐ Confirmation Sampling Analytical Results (if applicable)  
☐ Waste Material Sampling Analytical Results (required for on-site closure)  
☐ Disposal Facility Name and Permit Number  
☐ Soil Backfilling and Cover Installation  
☐ Re-vegetation Application Rates and Seeding Technique  
☐ Site Reclamation (Photo Documentation)

On-site Closure Location: Latitude \_\_\_\_\_ Longitude \_\_\_\_\_ NAD: ☐ 1927 ☐ 1983

**Operator Closure Certification:**

I hereby certify that the information and attachments submitted with this closure report is true, accurate and complete to the best of my knowledge and belief. I also certify that the closure complies with all applicable closure requirements and conditions specified in the approved closure plan.

Name (Print): \_\_\_\_\_ Title: \_\_\_\_\_

Signature: \_\_\_\_\_ Date: \_\_\_\_\_

e-mail address: \_\_\_\_\_ Telephone: \_\_\_\_\_

Jackson Com 1N (NEW DRILL)

ConocoPhillips Company requests a variance for the items listed below. The requested variance, per 19.15.17.15.A, provides equal or better protection of fresh water, public health & the environment.

1. Fencing

- Fencing as described in Section 5 under Alternate, COPC will construct all new fences around the temporary pit utilizing 48" steel mesh field-fence (hogwire) on the bottom with a single strand of barbed wire on top. T-posts shall be installed every 12 feet and corners shall be anchored utilizing a secondary T-post. Temporary pits will be fenced at all times excluding drilling or work-over operations, when the front side of the fence will be temporarily removed for operational purposes.
  - If the pit is located within 1000 feet of an occupied permanent residence, school, hospital, institution or church, COPC will construct all new fences utilizing chain link security fence with two strands of barbed wire on top. T-posts shall be installed every 12 feet and corners shall be anchored utilizing a secondary T-post. Temporary pits will be fenced at all times excluding drilling or work-over operations, when the front side of the fence will be temporarily removed for operational purposes. The operator shall ensure that all gates associated with the fence are closed and locked when responsible personnel are not onsite.

2. Pit Marker

- COPC will also be using a temporary Flat Pit Marker upon closure. The temporary pit will be located with a steel marker, no less than four inches in diameter, cemented in a hole three feet deep in the center of the onsite burial upon the abandonment of all the wells on the pad. The marker will be flush with the ground to allow access of the active well pad and for safety concerns. The marker will include a threaded collar to be used for future abandonment. The top of the marker will contain a welded steel 12" square plate that indicates the onsite burial of the temporary pit.
- The plate will be easily removable and a four foot tall riser will be threaded into the top of the collar marker and welded around the base with the operator's information at the time all wells on the pad are abandoned. The operator's information will include the following: Operator Name, Lease Name, Well Name and number, Unit Number, Section, Township, Range and an indicator that the marker is an onsite burial location.
- COPC will notify Public Entity Surface Owners by email in lieu of certified mail. Private Entity Surface Owners will still be notified via certified mail.

## White, Arleen R

---

**From:** White, Arleen R  
**Sent:** Thursday, May 08, 2014 1:07 PM  
**To:** 'Kelly, Mark'  
**Cc:** 'Kelly, Jonathan, EMNRD'; Powell, Brandon, EMNRD  
**Subject:** JACKSON COM 1N\_SURFACE OWNER NOTIFICATION

The subject well (JACKSON COM 1N) will have a temporary pit that will be closed on-site. Please let me know if you have any questions.

Thanks,  
Arleen

~~~~~  
Arleen White  
Staff Regulatory Technician  
ConocoPhillips-SJ Business Unit  
Ph:(505)326-9517  
[arleen.r.white@conocophillips.com](mailto:arleen.r.white@conocophillips.com)





# New Mexico Office of the State Engineer Water Column/Average Depth to Water

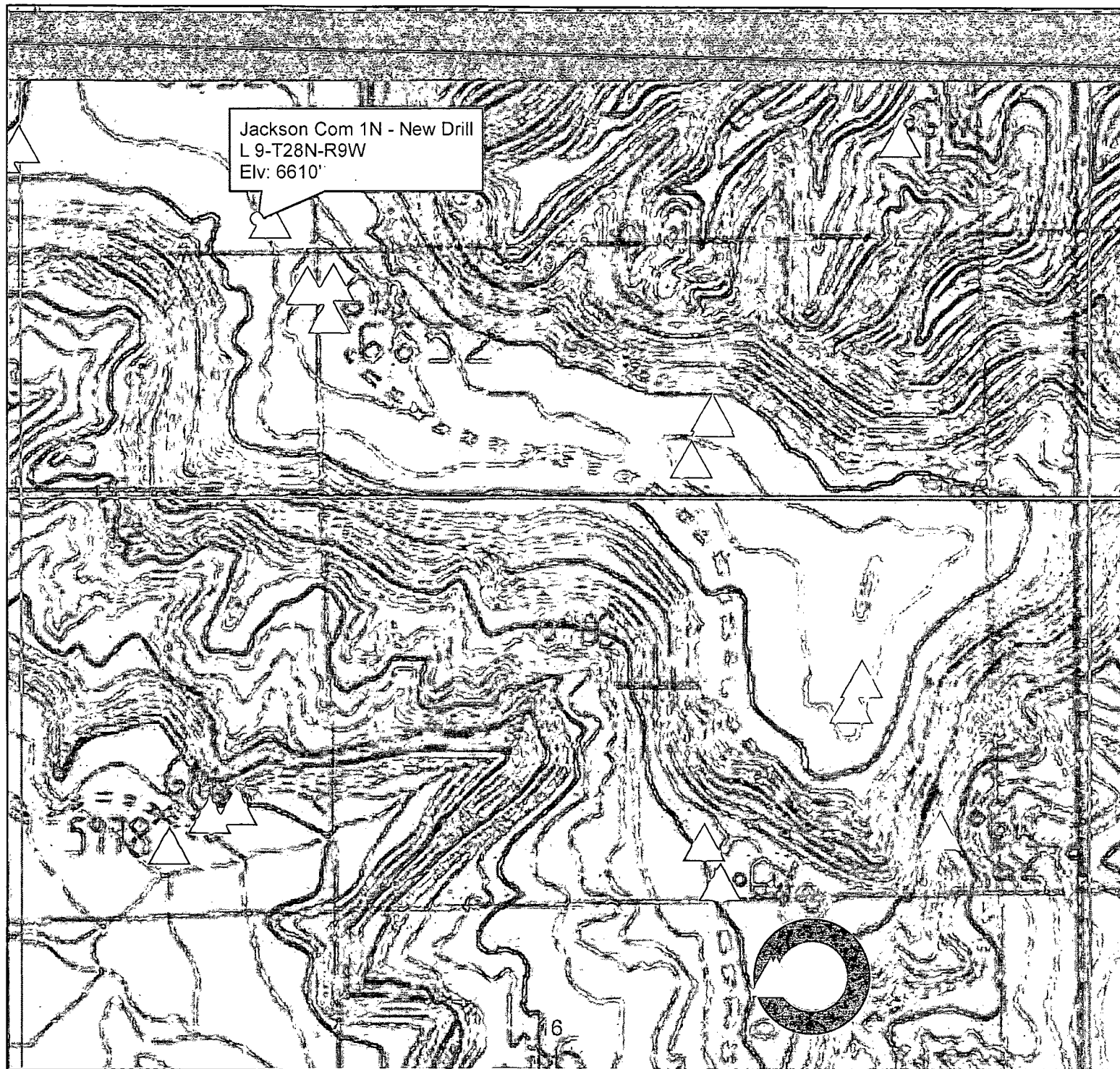
No records found.

**PLSS Search:**






Section(s): 5, 4, 3, 8, 9, 10, Township: 28N Range: 09W  
17, 16, 15

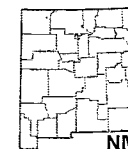
The data is furnished by the NMOSE/ISC and is accepted by the recipient with the expressed understanding that the OSE/ISC make no warranties, expressed or implied, concerning the accuracy, completeness, reliability, usability, or suitability for any particular purpose of the data.

te



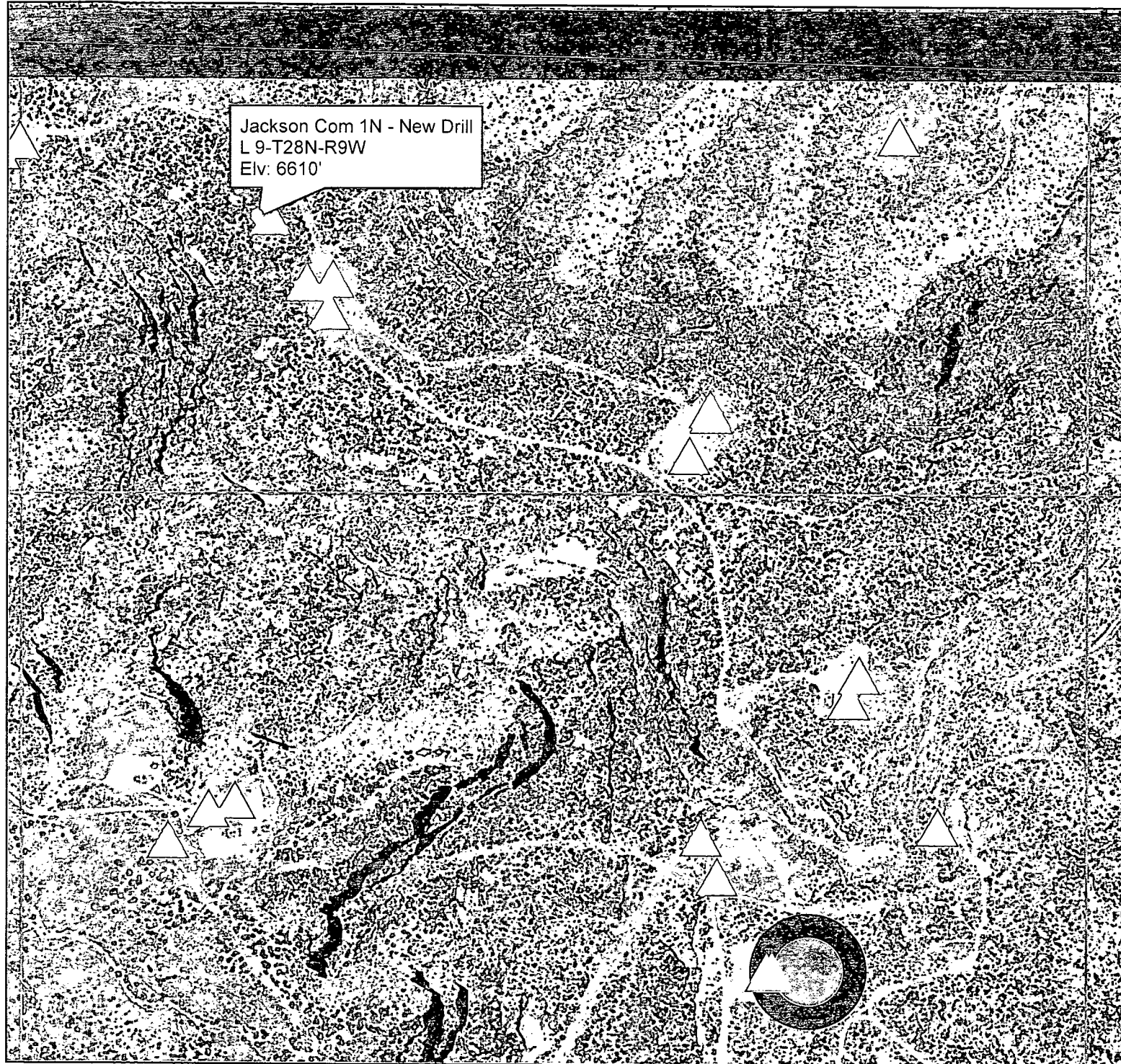
# Legend

-  DSM
-  All Wells
-  iWater
-  POD WATERS
-  COP Cathodic





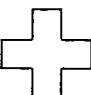


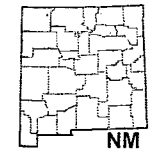
ConocoPhillips

Text



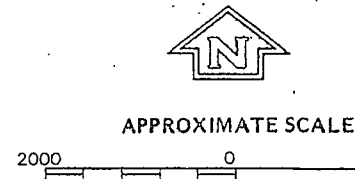
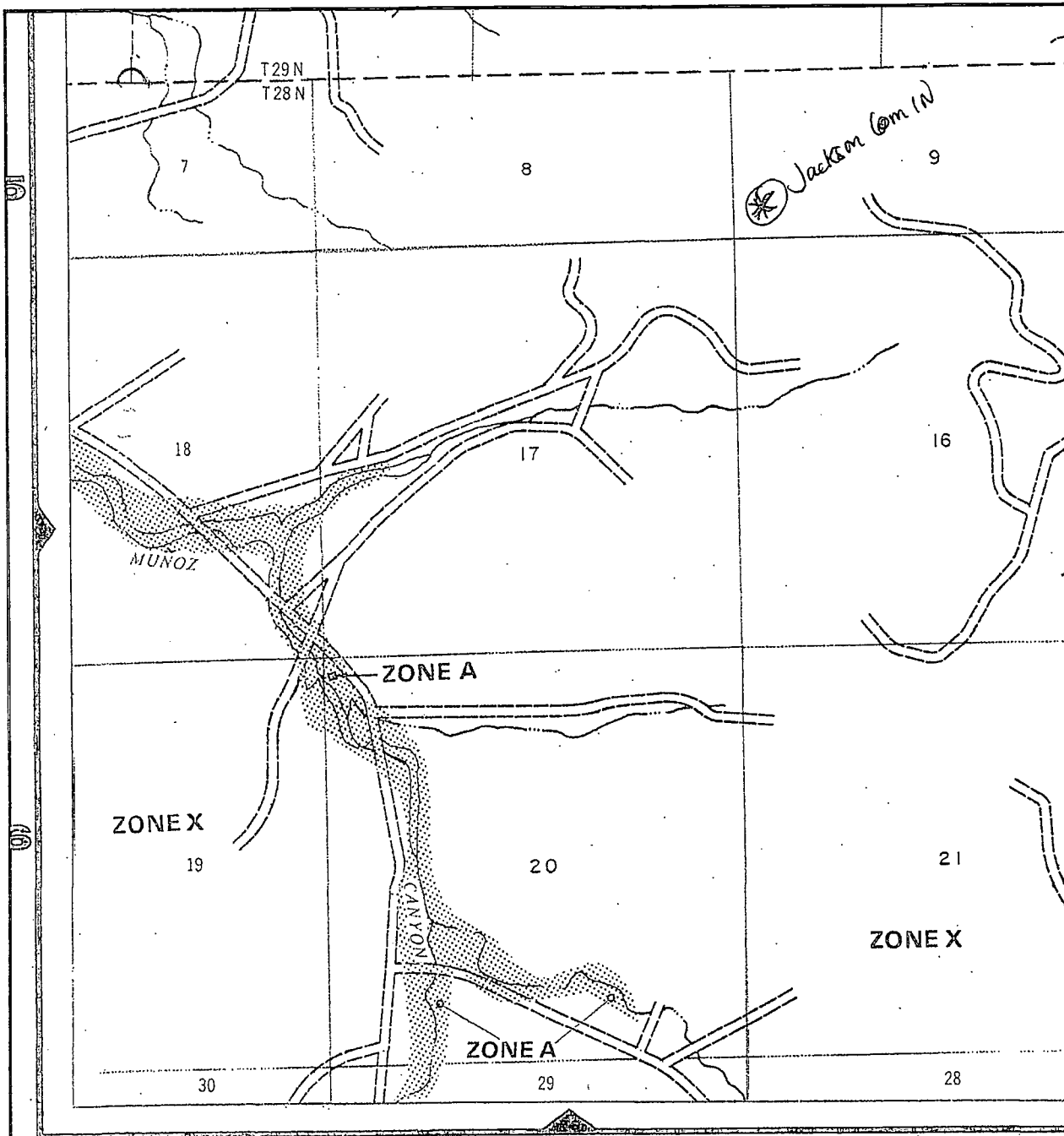
# Legend

-  DSM
-  All Wells
-  iWater
-  POD WATERS
-  COP Cathodic



ConocoPhillips

Text



NATIONAL FLOOD INSURANCE PROGRAM

**FIRM**  
FLOOD INSURANCE RATE MAP

**SAN JUAN COUNTY,  
NEW MEXICO**  
UNINCORPORATED AREAS

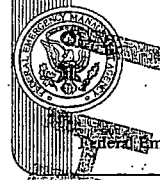
PANEL 575 OF 1450  
(SEE MAP INDEX FOR PANELS NOT PRINTED)



PANEL LOCATION

**COMMUNITY-PANEL NUMBER**  
350064 0575

**EFFECTIVE DATE:**  
AUGUST 4, 1980



Federal Emergency Management Agency

This is an official copy of a portion of the above referenced flood map. It was extracted using F-MIT On-Line. This map does not reflect changes or amendments which may have been made subsequent to the date on the title block. For the latest product information about National Flood Insurance Program flood maps check the FEMA Flood Map Store at [www.msc.fema.gov](http://www.msc.fema.gov)

# Mines, Mills and Quarries

## Mines, Mills & Quarries Commodity Groups

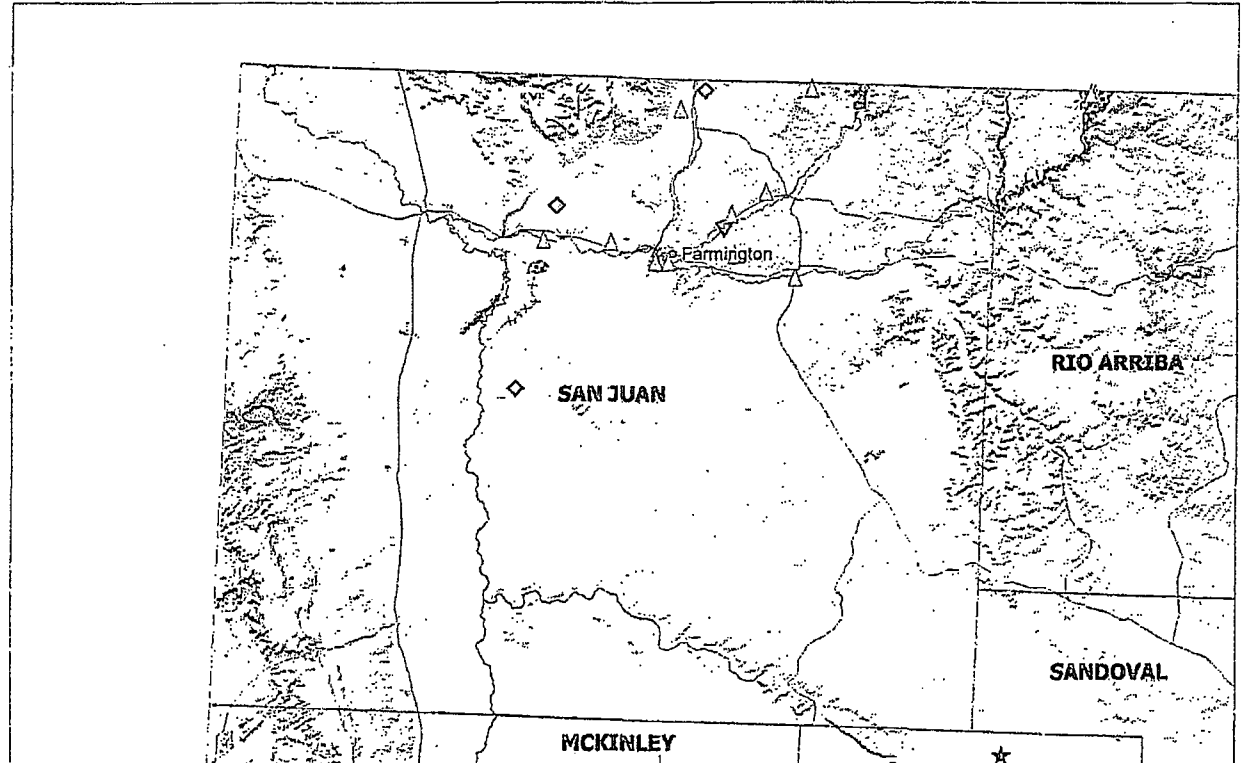
- △ Aggregate & Stone Mines
- ◇ Coal Mines
- ☆ Industrial Minerals Mines
- ◊ Industrial Minerals Mills
- ▣ Metal Mines and Mill Concentrate
- ▤ Potash Mines & Refineries
- ⌘ Smelters & Refinery Ops.
- ✱ Uranium Mines
- ⊕ Uranium Mills

## Population

- ⊙ Cities - major

## Transportation

- +— Railways
- Interstate Highways
- Major Roads



SCALE 1 : 1,242,974



## Siting Criteria and Compliance Demonstrations

Well Name: Jackson Com 1N

1. Depth to groundwater (should not be less than 25 feet):

Depth to groundwater is >100'. The nearest recorded well with available water-depth information is the (iWaters Data) with groundwater @ (65') as indicated in the iWaters Data sheet attached.

2. Distance to watercourse (should not be within 100 feet of a continuously flowing watercourse other significant watercourse or 200 feet from lakebed, sinkhole, or playa lake):

Aerial map attached indicates that there are no lakebeds, sinkholes, playa lakes, or watercourses within 200 feet of the proposed pit.

3. Distance to buildings (should not be within 300 feet of any permanent buildings):

Aerial map attached indicates that the pit will not be within 300 feet of any of these locations.

4. Distance to springs or wells (should not be within 300 feet of a private, domestic fresh water well or spring used by less than five (5) households or within 300 feet of any other fresh water well or spring):

Aerial map attached indicates that the pit will not be within 300 feet of any recorded well or spring.

5. Location within a 100 year floodplain (should not be located within a 100 year floodplain)

FEMA map attached indicates that the pit will not be within a 100 year floodplain.

6. Distance to wetlands (should not be within 300 feet):

During initial onsite the well pad was evaluated for Wetland proximity. No wetland was identified within 300 feet of the proposed well pad. See attached Aerial map.

7. Location above subsurface mine (should not overlie a subsurface mine):

The pit will not overlie a mine. The 2010 Mines, Mills, and Quarries map attached indicates that there are no subsurface mines in the area.

8. Presence within unstable area (should not be within an unstable area):

The attached topographic map indicates that the location will not be within an unstable area.

## *Hydrogeological report for Jackson Com 1N*

### **Regional Hydrogeological context:**

The San Jose Formation of Eocene age occurs in New Mexico and Colorado, and its outcrop forms the land surface over much of the eastern half of the central basin. It overlies the Nacimiento Formation in the area generally south of the Colorado-New Mexico State line and overlies the Animas Formation in the area generally north of the State line.

The San Jose Formation was deposited in various fluvial-type environments. In general, the unit consists of an interbedded sequence of sandstone, siltstone, and variegated shale. Thickness of the San Jose Formation generally increases from west to east (200 feet in the west and south to almost 2,700 feet in the center of the structural basin).

Ground water is associated with alluvial and fluvial sandstone aquifers. Thus, the occurrence of ground water is mainly controlled by the distribution of sandstone in the formation. The distribution of such sandstone is the result of original depositional extent plus any post-depositional modifications, namely erosion and structural deformation.

Transmissivity data for San Jose Formation are minimal. Values of 40 and 120 feet squared per day were determined from two aquifer tests (Stone et al, 1983, table 5). The reported or measured discharge from 46 water wells completed in San Jose Formation ranges from 0.15 to 61 gallons per minute and the median is 5 gallons per minute. Most of the wells provide water for livestock and domestic use.

The San Jose Formation is a very suitable unit for recharge from precipitation because soils that form on the unit are sandy and highly permeable and therefore readily adsorb precipitation. However, low annual precipitation, relatively high transpiration and evaporation rates, and deep dissection of the San Jose Formation by the San Juan River and its tributaries all tend to reduce the effective recharge to the unit.

Stone et al., 1983, Hydrogeology and Water Resources of the San Juan Basin, New Mexico: Socorro, New Mexico Bureau of Mines and Mineral Resources Hydrologic Report 6, 70 p.

## District I

1625 N. French Dr., Hobbs, NM 88240

## District II

1301 W. Grand Avenue, Artesia, NM 88210

## District III

1000 Rio Brazos Rd., Aztec, NM 87410

## District IV

1220 S. St. Francis Dr., Santa Fe, NM 87505

State of New Mexico  
Energy, Minerals & Natural Resources Department  
OIL CONSERVATION DIVISION  
1220 South St. Francis Dr.  
Santa Fe, NM 87505

Form C-102

Revised July 16, 2010

Submit one copy to appropriate  
District Office

☒ AMENDED REPORT

## WELL LOCATION AND ACREAGE DEDICATION PLAT

|                                         |  |                                                      |  |                                                           |                                |
|-----------------------------------------|--|------------------------------------------------------|--|-----------------------------------------------------------|--------------------------------|
| <sup>1</sup> API Number<br>30-045-35415 |  | <sup>2</sup> Pool Code<br>71599/72319                |  | <sup>3</sup> Pool Name<br>BASIN DAKOTA / BLANCO MEASVERDE |                                |
| <sup>4</sup> Property Code<br>31814     |  | <sup>5</sup> Property Name<br>JACKSON COM            |  |                                                           | <sup>6</sup> Well Number<br>1N |
| <sup>7</sup> OGRID No.<br>217817        |  | <sup>8</sup> Operator Name<br>CONOCOPHILLIPS COMPANY |  |                                                           | <sup>9</sup> Elevation<br>6610 |

<sup>10</sup> SURFACE LOCATION

| UL or lot no. | Section | Township | Range | Lot Idn | Feet from the | North/South line | Feet from the | East/West line | County   |
|---------------|---------|----------|-------|---------|---------------|------------------|---------------|----------------|----------|
| L             | 9       | 28-N     | 9-W   |         | 1738          | SOUTH            | 15            | WEST           | SAN JUAN |

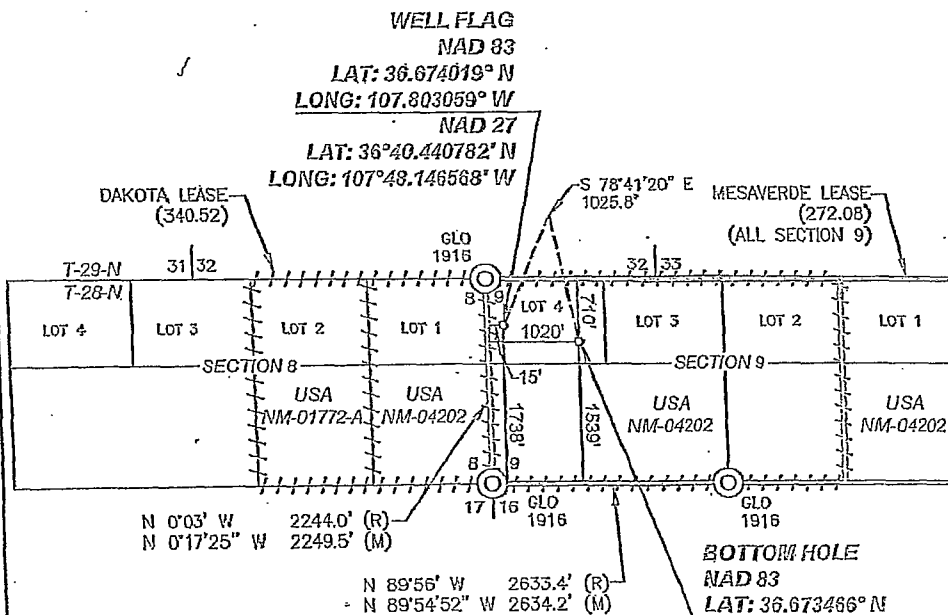
<sup>11</sup> Bottom Hole Location If Different From Surface

| UL or lot no. | Section | Township | Range | Lot Idn | Feet from the | North/South line | Feet from the | East/West line | County   |
|---------------|---------|----------|-------|---------|---------------|------------------|---------------|----------------|----------|
| L             | 9       | 28-N     | 9-W   |         | 1539          | SOUTH            | 1020          | WEST           | SAN JUAN |

|                                                             |                               |                                  |                                      |
|-------------------------------------------------------------|-------------------------------|----------------------------------|--------------------------------------|
| <sup>12</sup> Dedicated Acres<br>340.52 - DK<br>272.08 - MV | <sup>13</sup> Joint or Infill | <sup>14</sup> Consolidation Code | <sup>15</sup> Order No.<br>R-1814 DK |
|-------------------------------------------------------------|-------------------------------|----------------------------------|--------------------------------------|

NO ALLOWABLE WILL BE ASSIGNED TO THIS COMPLETION UNTIL ALL INTERESTS HAVE BEEN  
CONSOLIDATED OR A NON-STANDARD UNIT HAS BEEN APPROVED BY THE DIVISION

16



BASIS OF BEARING IS THE NEW MEXICO STATE  
PLANE COORDINATE SYSTEM, WEST ZONE, NAD83  
AS DETERMINED BY GPS OBSERVATION AND  
NGS/OPUS SOLUTION.

<sup>17</sup> OPERATOR CERTIFICATION

I hereby certify that the information contained herein is true and complete to the best of my knowledge and belief, and that this organization either owns a working interest or unleased mineral interest in the land including the proposed bottom hole location or has a right to drill this well at this location pursuant to a contract with an owner of such a mineral or working interest, or to a voluntary pooling agreement or a compulsory pooling order heretofore entered by the division.

*Patsy Clugston* 5/2/14  
Signature Date

Patsy Clugston

Printed Name

Staff Regulatory Tech

Title and E-mail Address

<sup>18</sup> SURVEYOR CERTIFICATION

I hereby certify that the well location shown on this plat was plotted from field notes of actual surveys made by me or under my supervision, and that the same is true and correct to the best of my belief.

Date of Survey: 10/19/10

Signature and Seal of Professional Surveyor:



Certificate Number: NM 11393



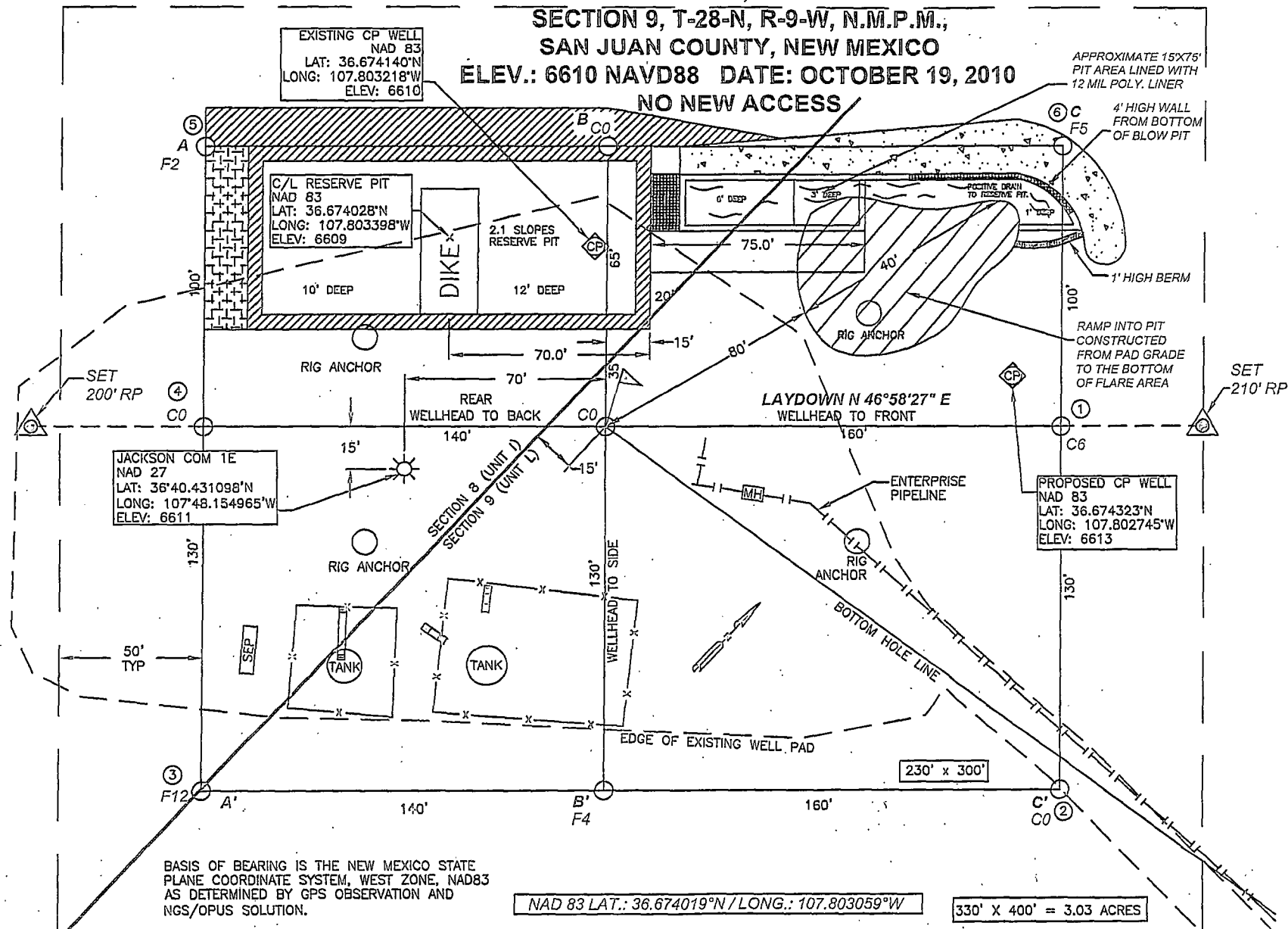
# CONOCOPHILLIPS COMPANY

JACKSON COM 1N

1738' FSL, 15' FWL

SECTION 9, T-28-N, R-9-W, N.M.P.M.,  
SAN JUAN COUNTY, NEW MEXICO  
ELEV.: 6610 NAVD88 DATE: OCTOBER 19, 2010

NO NEW ACCESS



NOTES:

1. RESERVE PIT DIKE: TO BE 8' ABOVE DEEP SIDE (OVERFLOW-3' WIDE AND 1' ABOVE SHALLOW SIDE).

2. C.C.I. SURVEYS IS NOT LIABLE FOR UNDERGROUND UTILITIES OR PIPELINES.

CONTRACTOR SHOULD CALL ONE-CALL FOR LOCATION OF ANY MARKED OR UNMARKED BURIED PIPELINES OR CABLES ON WELL PAD AND OR ACCESS ROAD AT LEAST TWO (2) WORKING DAYS PRIOR TO CONSTRUCTION

**ConocoPhillips Company**  
**San Juan Basin**  
**Pit Design and Construction Plan**

In accordance with Rule 19.15.17 the following information describes the design and construction of temporary pits on ConocoPhillips Company (COPC) locations. This is COPC's standard procedure for all temporary pits. A separate plan will be submitted for any temporary pit which does not conform to this plan.

**General Plan:**

1. COPC will design and construct a properly sized and approved temporary pit which will contain liquids and solids and should prevent contamination of fresh water and protect public health and environment.
2. Prior to constructing the pit, (except a pit constructed in an emergency), topsoil will be stockpiled for use as the final cover at the time of closure.
3. COPC will sign the well location in compliance with 19.15.17.11.C NMAC.
4. COPC will construct all new fences around the temporary pit utilizing 48" steel mesh field-fence (hogwire) on the bottom with a single strand of barbed wire on top. T-posts shall be installed every 12 feet and corners shall be anchored utilizing a secondary T-post. Temporary pits will be fenced at all times excluding drilling or workover operations, when the front side of the fence will be temporarily removed for operational purposes.
  - If pit is located within 1000 feet of an occupied permanent residence, school, hospital, institution or church, COPC will construct all new fences utilizing 72" chain link security fence on the bottom with two strands of barbed wire on top. T-posts shall be installed every 12 feet and corners shall be anchored utilizing a secondary T-post. Temporary/permanent pits will be fenced at all times excluding drilling or workover operations, when the front side of the fence will be temporarily removed for operational purposes. The operator shall ensure that all gates associated with the fence are closed and locked when responsible personnel are not onsite.
5. COPC shall construct the temporary pit so that the foundation and interior slopes are firm and free of rocks, debris, sharp edges or irregularities to prevent liner failure.
6. COPC shall construct the pit so that the slopes are no steeper than two horizontal feet to one vertical foot (2H:1V).
7. Pit walls will be walked down by a crawler type tractor following construction.
8. All temporary pits will be lined with a 20-mil, string reinforced, LLDPE liner, complying with EPA SW-846 method 9090A requirements.
9. Geotextile will be installed beneath the liner when rocks, debris, sharp edges or irregularities cannot be avoided.
10. All liners will be anchored in the bottom of a compacted earth-filled trench at least 18 inches deep.
11. COPC will minimize liner seams and orient them up and down, not across a slope. Factory seams will be used whenever possible. COPC will ensure all field seams are welded by qualified personnel. Field seams will be overlapped four to six inches and will be oriented parallel to the line of maximum slope. COPC will minimize the number of field seams in corners and irregularly shaped areas.
12. The liner shall be protected from any fluid force or mechanical damage through the use of mud pit slides, or a manifold system.
13. The pit shall be protected from run-on by constructing and maintaining diversion ditches around the location or around the perimeter of the pit in some cases.
14. The volume of the pit shall not exceed 10 acre-feet, including freeboard.
15. Temporary blow pits will be constructed to allow gravity flow to discharge into lined drill pit.
16. The lower half of the blow pit (nearest lined pit) will be lined with a 20-mil, string reinforced, LLDPE liner. The upper half of the blow pit will remain unlined as allowed in Rule 19.15.17.11 F.11.
17. COPC will not allow freestanding liquids to remain on the unlined portion of a temporary blow pit.

**ConocoPhillips Company**  
**San Juan Basin**  
**Maintenance and Operating Plan**

In accordance with Rule 19.15.17 the following information describes the operation and maintenance of temporary pits on ConocoPhillips Company (COPC) locations. This is COPC's standard procedure for all temporary pits. A separate plan will be submitted for any temporary pit which does not conform to this plan.

**General Plan:**

1. COPC will operate and maintain a temporary pit to contain liquids and solids and maintain the integrity of the liner and liner system to prevent contamination of fresh water and protect public health and environment.
2. COPC will conserve drilling fluids by transferring liquids to pits ahead of the rigs whenever possible. All other drilling fluids will be disposed at Basin Disposal Inc., permit # NM-01-005.
3. COPC will not discharge or store any hazardous waste in any temporary pit.
4. If any pit liner's integrity is compromised, or if any penetration of the liner occurs above the liquid's surface, then COPC shall notify the Aztec Division office by phone or email within 48 hours of the discovery and repair the damage or replace the liner.
5. If a leak develops below the liquid's level, COPC will remove all liquids above the damaged liner within 48 hours and repair the damage or replace the liner, notify the appropriate division office pursuant to 19.15.29 NMAC.
  - o A Major Release shall be reported by giving both immediate verbal notice and timely written notice by filing form C-141 within 15 days pursuant to Subsection C, Paragraphs (1) and (2) of 19.15.29.7.A NMAC. A Major Release is:
    - o (a) An unauthorized release of a volume, excluding natural gases, in excess of 25 barrels;
    - o (b) An unauthorized release of any volume which:
      - (i) results in a fire;
      - (ii) will reach a water course;
      - (iii) may with reasonable probability endanger public health; or
      - (iv) results in substantial damage to property or the environment;
    - o (c) An unauthorized release of natural gases in excess of 500 mcf; or
    - o (d) A release of any volume which may with reasonable probability be detrimental to water or cause an exceedance of the standards in Section 19, Subsections A, B, C of 19.15.30.9 NMAC.
  - o A Minor Release shall be reported by giving timely written notice by the filing of form C-141 within 15 days pursuant to 19.15.29.7 NMAC. A Minor Release is an unauthorized release of a volume, greater than 5 barrels but not more than 25 barrels; or greater than 50 mcf but less than 500 mcf of natural gases.
6. The liner shall be protected from any fluid force or mechanical damage through the use of mud pit slides, or a manifold system.
7. The pit shall be protected from run-on by constructing and maintaining diversion ditches around the location or around the perimeter of the pit in some cases.
8. COPC shall immediately remove any visible layer of oil from the surface of the temporary pit after cessation of a drilling or workover operation. Oil absorbent booms will be utilized to contain and remove oil from the pit's surface. An oil absorbent boom will be stored on-site until closure of pit.
9. Only fluids generated during the drilling or workover process may be discharged into a temporary pit.
10. COPC will maintain the temporary pit free of miscellaneous solid waste or debris.
11. While a rig is on location, COPC will inspect the temporary pit at least once daily to ensure compliance with this plan. Inspections will be logged in the IADC reports. COPC will file this log with the Aztec Division office upon closure of the pit.

12. After drilling operations, COPC will inspect the temporary pit weekly so long as liquids remain in the temporary pit. A log of the inspections will be stored at BR's office electronically and will be filed with the Aztec Division office upon closure of the pit.
13. COPC shall maintain at least two feet of freeboard for a temporary pit.
14. COPC shall remove all free liquids from a temporary pit within 60 days from the date the operator releases the drilling rig.
15. COPC shall remove all free liquids from a cavitation pit within 48 hours after completing cavitation. COPC may request additional time to remove liquids from the Aztec Division office if it is not feasible to remove liquids within 48 hours.

## **ConocoPhillips Company San Juan Basin Closure Plan**

In accordance with Rule 19.15.17.13 NMAC the following information describes the closure requirements of temporary pits on ConocoPhillips Company (COPC) locations. This is COPC's standard procedure for all temporary pits. A separate plan will be submitted for any temporary pit which does not conform to this plan.

All closure activities will include proper documentation and be available for review upon request and will be submitted to NMOCD within 60 days of closure of pit. Closure report will be filed on C-144 and incorporate the following:

- Details on Capping and Covering, where applicable.
- Plot Plan (Pit Diagram)
- Inspection Reports
- Sampling Results
- C-105
- Copy of Deed Notice will be filed with County Clerk for Fee Wells

### **General Plan:**

1. All free standing liquids will be removed at the start of the pit closure process from the pit and disposed of in a division-approved facility or recycle, reuse or reclaim the liquids in a manner that the appropriate division district office approves. The facilities to be used will be Basin Disposal (Permit #NM-01-005) and Envirotech Land Farm (Permit #NM-01-011).
2. The preferred method of closure for all temporary pits will be in-place burial, assuming that all the criteria listed in 19.15.17.13.D are met.
3. The surface owner shall be notified of COPC's closing of the temporary pit within 72 hours, but not more than one week, prior to closure via certified mail, return receipt requested.
4. Within 6 months of the Rig Off status occurring COPC will ensure that temporary pits are closed, re-contoured, and reseeded.
5. Notice of Closure will be given prior to closure to the Aztec Division office within 72 hour, but not more than and one week, via email and verbally. The notification of closure will include the following:
  - i. Operator's name
  - ii. Location by Unit Letter, Section, Township, and Range. Well name and API number.
6. Pit contents will be mixed with non-waste containing, earthen material in order to achieve the solidification process. The solidification process will be accomplished using a combination of natural drying and mechanically mixing. Pit contents will be mixed with non-waste, earthen material to a consistency that is deemed a safe and stable. The mixing ratio shall not exceed 3 parts clean soil to 1 part pit contents and must pass the paint filter liquids test (EPA SW-846, Method 9095) or other test methods approved by the division.
7. COPC will collect, at a minimum, a five point composite sample of the temporary pit contents to demonstrate that, after the waste is solidified or stabilized with soil or other non-waste material at a ratio of no more than 3:1 soil or other non-waste material to waste, the concentration of any contaminant in the stabilized waste is not higher than the parameters listed in table II of 19.15.17.13 NMAC.
8. COPC will fold the outer edges of the liner to overlap the waste material prior to the installation of a geomembrane cover. Install a geomembrane cover over the waste material in the lined temporary pit and in a manner that prevents the collection of infiltration water in the lined temporary pit and on the geomembrane cover after the coil cover is in place; the geomembrane cover shall consist of a 20-mil string reinforced LLDPE liner or equivalent cover that the appropriate division district office approves; the geomembrane cover shall be composed of an impervious, synthetic material that is resistant to petroleum hydrocarbons, salts and acidic and alkaline solutions; cover compatibility shall comply with EPA SW -845 Method 9090A.

9. Upon completion of solidification and testing standards being passed, the pit area will be backfilled with compacted, non-waste containing, earthen material. A minimum of four feet of non-waste containing, uncontaminated, earthen material with chloride concentrations less than 600 mg/kg as analyzed by EPA Method 300.0. The soil cover shall include either the background thickness of topsoil or one foot of suitable material to establish vegetation at the site, whichever is greater. [19.15.17.13 H.3]
10. During the stabilization process if the liner is ripped by equipment the Aztec NMOCD office will be notified within 48 hours and the liner will be repaired if possible. If the liner can not be repaired then all contents will be excavated and removed.
11. Dig and Haul Material will be transported to the Envirotech Land Farm located 16 miles south of Bloomfield on Angel Peak Road, CR 7175. Permit # NM01001.
12. Re-contouring of location will match fit, shape, line, form and texture of the surrounding. Re-shaping will include drainage control, prevent ponding, and prevent erosion. Natural drainages will be unimpeded and water bars and/or silt traps will be placed in areas where needed to prevent erosion on a large scale. Final re-contour shall have a uniform appearance with smooth surface, fitting the natural landscape.
13. For those portions of the former temporary pit area no longer needed for production activities, COPC will seed the disturbed areas the first favorable growing season after the temporary pit is covered. Seeding will be accomplished via drilling on the contour whenever practical, or by other Division-approved methods. COPC will notify the division when reclamation and re-vegetation is complete.

Reclamation of the temporary pit area will be considered complete when:

- Vegetative cover reflects a life form ratio of +/- 50% of pre-disturbance levels.
- Total percent plant cover of at least 70% of pre-disturbance levels (Excluding noxious weeds).

OR

- Pursuant to 19.15.17.13.H.D, COPC will comply with obligations imposed by other applicable federal or tribal agencies in which their re-vegetation and reclamation requirements provide equal or better protection of water, human health and the environment.
14. The temporary pit will be located with a steel marker, no less than four inches in diameter, cemented in a hole three feet deep in the center of the onsite burial upon the abandonment of all the wells on the pad. The marker will be flush with the ground to allow access of the active well pad and for safety concerns. The marker will include a threaded collar to be used for future abandonment. The top of the marker will contain a welded steel 12" square plate that indicates the onsite burial of the temporary pit.
    - The plate will be easily removable and a four foot tall riser will be threaded into the top of the collar marker and welded around the base with the operator's information at the time all wells on the pad are abandoned. The operator's information will include the following: Operator Name, Lease Name, Well Name and number, Unit Number, Section, Township, Range and an indicator that the marker is an onsite burial location.

| Table II<br>Closure Criteria for Burial Trenches and Waste Left in Place in Temporary Pits |             |                                  |              |
|--------------------------------------------------------------------------------------------|-------------|----------------------------------|--------------|
| Depth below bottom of pit to groundwater less than 10,000 mg/l TDS                         | Constituent | Method*                          | Limit**      |
| 25-50 feet                                                                                 | Chloride    | EPA Method 300.0                 | 20,000 mg/kg |
|                                                                                            | TPH         | EPA SW-846 Method 418.1          | 100 mg/kg    |
|                                                                                            | BTEX        | EPA SW-846 Method 8021B or 8260B | 50 mg/kg     |
|                                                                                            | Benzene     | EPA SW-846 Method 8021B or 8015M | 10 mg/kg     |
|                                                                                            | Chloride    | EPA Method 300.0                 | 40,000 mg/kg |

|             |          |                                  |              |
|-------------|----------|----------------------------------|--------------|
| 51-100 feet | TPH      | EPA SW-846 Method 418.1          | 2,500 mg/kg  |
|             | GRO+DRO  | EPA SW-846 Method 8015M          | 1,000 mg/kg  |
|             | BTEX     | EPA SW-846 Method 8021B or 8260B | 50 mg/kg     |
|             | Benzene  | EPA SW-846 Method 8021B or 8015M | 10 mg/kg     |
| > 100 feet  | Chloride | EPA Method 300.0                 | 80,000 mg/kg |
|             | TPH      | EPA SW-846 Method 418.1          | 2,500 mg/kg  |
|             | GRO+DRO  | EPA SW-846 Method 8015M          | 1,000 mg/kg  |
|             | BTEX     | EPA SW-846 Method 8021B or 8260B | 50 mg/kg     |
|             | Benzene  | EPA SW-846 Method 8021B or 8015M | 10 mg/kg     |

\*Or other test methods approved by the division

\*\*Numerical limits or natural background level, whichever is greater [19.15.17.13 NMAC - Rp, 19.15.17.13 NMAC, 6/28/13]