

UNITED STATES
DEPARTMENT OF THE INTERIOR
BUREAU OF LAND MANAGEMENT

RECEIVED

JUN 11 2014

FORM APPROVED
OMB No. 1004-0137
Expires: March 31, 2007

SUNDRY NOTICES AND REPORTS ON WELLS
Do not use this form for proposals to drill or to re-enter an abandoned well. Use Form 3160-3 (APD) for such proposals.

SUBMIT IN TRIPLICATE – Other instructions on page 2.

1. Type of Well <input type="checkbox"/> Oil Well <input type="checkbox"/> Gas Well <input type="checkbox"/> Other		5. Lease Serial No. NMSE-078362
2. Name of Operator WPX Energy Production, LLC		6. If Indian, Allottee or Tribe Name
3a. Address PO Box 640 Aztec, NM 87410	3b. Phone No. (include area code) 505-333-1808	7. If Unit of CA/Agreement, Name and/or No.
4. Location of Well (Footage, Sec., T., R., M., or Survey Description) SHL: 1704' FSL & 517' FWL SEC 6 23N 6W BHL: 2586' FNL & 230' FWL SEC 1 23N 7W		8. Well Name and No. Chaco 2306-06L #239H
		9. API Well No. 30-039-31204
		10. Field and Pool or Exploratory Area Lybrook Gallup
		11. Country or Parish, State Rio Arriba County, NM

12. CHECK THE APPROPRIATE BOX(ES) TO INDICATE NATURE OF NOTICE, REPORT OR OTHER DATA

TYPE OF SUBMISSION	TYPE OF ACTION			
<input type="checkbox"/> Notice of Intent	<input type="checkbox"/> Acidize	<input type="checkbox"/> Deepen	<input type="checkbox"/> Production (Start/Resume)	<input type="checkbox"/> Water Shut-Off
<input checked="" type="checkbox"/> Subsequent Report	<input type="checkbox"/> Alter Casing	<input type="checkbox"/> Fracture Treat	<input type="checkbox"/> Reclamation	<input type="checkbox"/> Well Integrity
<input type="checkbox"/> Final Abandonment Notice	<input type="checkbox"/> Casing Repair	<input type="checkbox"/> New Construction	<input type="checkbox"/> Recomplete	<input checked="" type="checkbox"/> Other <u>SUPPLEMENTAL COMPLETION</u>
	<input type="checkbox"/> Change Plans	<input type="checkbox"/> Plug and Abandon	<input type="checkbox"/> Temporarily Abandon	
	<input type="checkbox"/> Convert to Injection	<input type="checkbox"/> Plug Back	<input type="checkbox"/> Water Disposal	

13. Describe Proposed or Completed Operation: Clearly state all pertinent details, including estimated starting date of any proposed work and approximate duration thereof. If the proposal is to deepen directionally or recompleate horizontally, give subsurface locations and measured and true vertical depths of all pertinent markers and zones. Attach the Bond under which the work will be performed or provide the Bond No. on file with BLM/BIA. Required subsequent reports must be filed within 30 days following completion of the involved operations. If the operation results in a multiple completion or recompleation in a new interval, a Form 3160-4 must be filed once testing has been completed. Final Abandonment Notices must be filed only after all requirements, including reclamation, have been completed and the operator has determined that the site is ready for final inspection.)

6/2/14 – MIRU HWS #7 to pull temporary 4-1/2" tie back string and run gas lift

6/3/14 – Pull existing production tubing and set RBP @ 5997'

Lay down 158 Jts of 4.5" 11.6# N-80 casing, marker jt, No-Go, and seal assembly

6/4/14 – TOH with RBP set @ 5997'

6/5/14 – C/O

6/6/14 – 2 3/8" Half Mule Shoe, 1 Jt 2 3/8" 4.7# J55 Tbg, 2 3/8" L80 X 1.87" XN Profile Nipple, 6 Jts 2 3/8" 4.7# J55 Tbg, 2 7/8" Box X 2 3/8" Pin Cross Over, 7" X 2 7/8" Arrowset 1-X 10K Packer, 7" X 2 7/8" T-2 On/Off Tool with 2.25" F Nipple, 2 7/8" 6.5# J55 4' Pup Jt, 1 Jt 2 7/8" 6.5# J55 Tbg, 2 7/8" Gas Lift #1, 9 Jts 2 7/8" 6.5# J55 Tbg, 2 7/8" L-80 X 2.31" X Profile Nipple, 13 Jts 2 7/8" 6.5# J55 Tbg, 2 7/8" Gas Lift #2, 18 Jts 2 7/8" 6.5# J55 Tbg, 2 7/8" Gas Lift #3, 20 Jts 2 7/8" 6.5# J55 Tbg, 2 7/8" Gas Lift #4, 23 Jts 2 7/8" 6.5# J55 Tbg, 2 7/8" Gas Lift #5, 30 Jts 2 7/8" 6.5# J55 Tbg, 2 7/8" Gas Lift #6, 35 Jts 2 7/8" 6.5# J55 Tbg, 2 7/8" Gas Lift #7, 42 Jts 2 7/8" 6.5# J55 Tbg, 7 1/16" X 2 7/8" Tbg Hanger, and 14.5' KB EOT @ 6159.35' Packer @ 5946.34' RDMO

14. I hereby certify that the foregoing is true and correct.

Name (Printed/Typed)

Larry Higgins

Title Regulatory Spec Sr.

Signature

Date 6/9/14

THIS SPACE FOR FEDERAL OR STATE OFFICE USE

Approved by

Title

Date

Conditions of approval, if any, are attached. Approval of this notice does not warrant or certify that the applicant holds legal or equitable title to those rights in the subject lease which would entitle the applicant to conduct operations thereon.

Office

Title 18 U.S.C. Section 1001 and Title 43 U.S.C. Section 1212, make it a crime for any person knowingly and willfully to make to any department or agency of the United States any false, fictitious or fraudulent statements or representations as to any matter within its jurisdiction.

NMOCDA

Chaco 2306-06L #239H
LYBROOK GALLUP Horizontal
 (page 1)

Spud: 12/11/13

Completed: 3/7/14

Pulled tie back & run gas
 lift: 6/3/14

Amended: 7/2/14

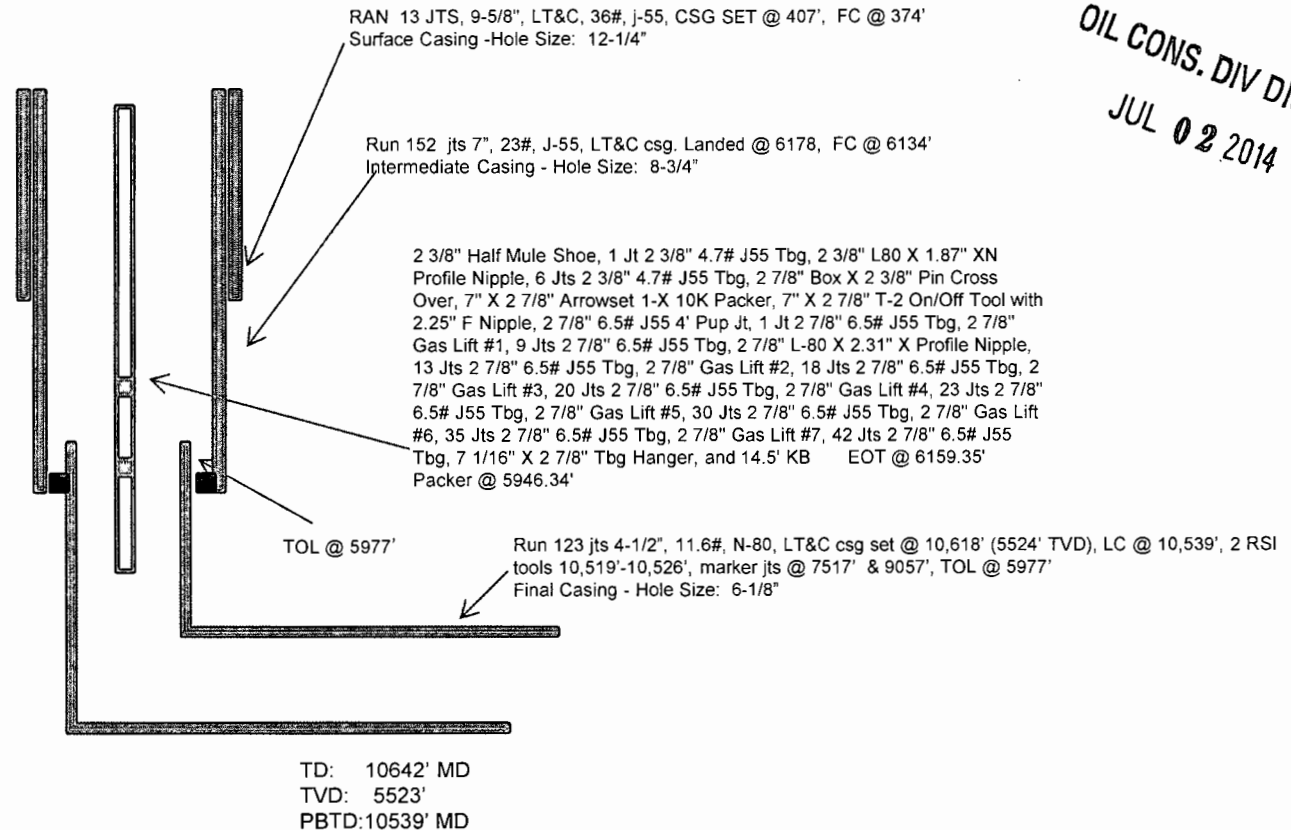
SHL: 1704' FSL & 517' FWL
 NW/4 SW/4 Section 6 (L), T23N, R6W

BHL: 2586' FNL & 230' FWL
 SW/4 NW/4 Section 1 (E), T23N, R 7W

Rio Arriba., NM
 Elevation: 6938
 API: 30-039-31204

OIL CONS. DIV DIST. 3
 JUL 02 2014

<i>Tops</i>	<i>MD</i>	<i>TVD</i>
Ojo Alamo	1463'	1448'
Kirtland	1788'	1763'
Pictured Cliffs	2078'	2044'
Lewis	2203'	2164'
Chacra	2541'	2492'
Cliff House	3653'	3568'
Menefee	3709'	3622'
Point Lookout	4440'	4333'
Mancos	4653'	4545'
Gallup	5076'	4967'



HOLE SIZE	CASING	CEMENT	VOLUME	CMT TOP
12-1/4"	9-5/8"	245 sx	282 cu.ft.	Surface
8-3/4"	7"	775 sx	1074 cu. ft.	Surface
6-1/8"	4-1/2"	360 sx	509 cu. ft.	5977 (TOL)

Lg 7/2/14

Gallup 15th:
6236'-6436'-
with 24, 0.40" holes.
Frac Gallup 14th stage
with 239,830# ,20/40
PSA Sand

Gallup 13th:
6760'-6975'-
with 24, 0.40"
holes.
Frac Gallup 13th
stage with
242,517# , 20/40
PSA Sand

Gallup 14th:
6500'-6698'-
with 24, 0.40"
holes.
Frac Gallup 14th
stage with
235,690# , 20/40
PSA Sand

Gallup 12th:
7041'-7258'-
with 24, 0.40" holes.
Frac Gallup 12th
stage with
251,470# , 20/40
PSA Sand

Gallup 11th:
7318'-7541'-
with 24, 0.40" holes.
Frac Gallup 11th stage
with 262,544# , 20/40
PSA Sand

Gallup 10th:
7613'-7825'-
with 24, 0.40"
holes. Frac
Gallup 10th
stage with
200,545# ,
20/40 PSA
Sand

Gallup 9th:
7887'-8092'-
with 24, 0.40"
holes. Frac Gallup
9th stage with
206,824# , 20/40
PSA Sand

Gallup 8th:
8161'-8384'-
with 24, 0.40"
holes. Frac Gallup
8th stage with
230,758# , 20/40
PSA Sand

Gallup 7th:
8452'-8674'-
with 24, 0.40"
holes. Frac
Gallup 7th
stage with
216,044# ,
20/40 PSA
Sand

Gallup 6th:
8764'-8976'-
with 24, 0.40"
holes. Frac
Gallup 6th stage
with 197,808# ,
20/40 PSA
Sand

Gallup 5th:
9056'-9277'-
with 24, 0.40"
holes. Frac
Gallup 5th stage
with 214,963# ,
20/40 PSA
Sand

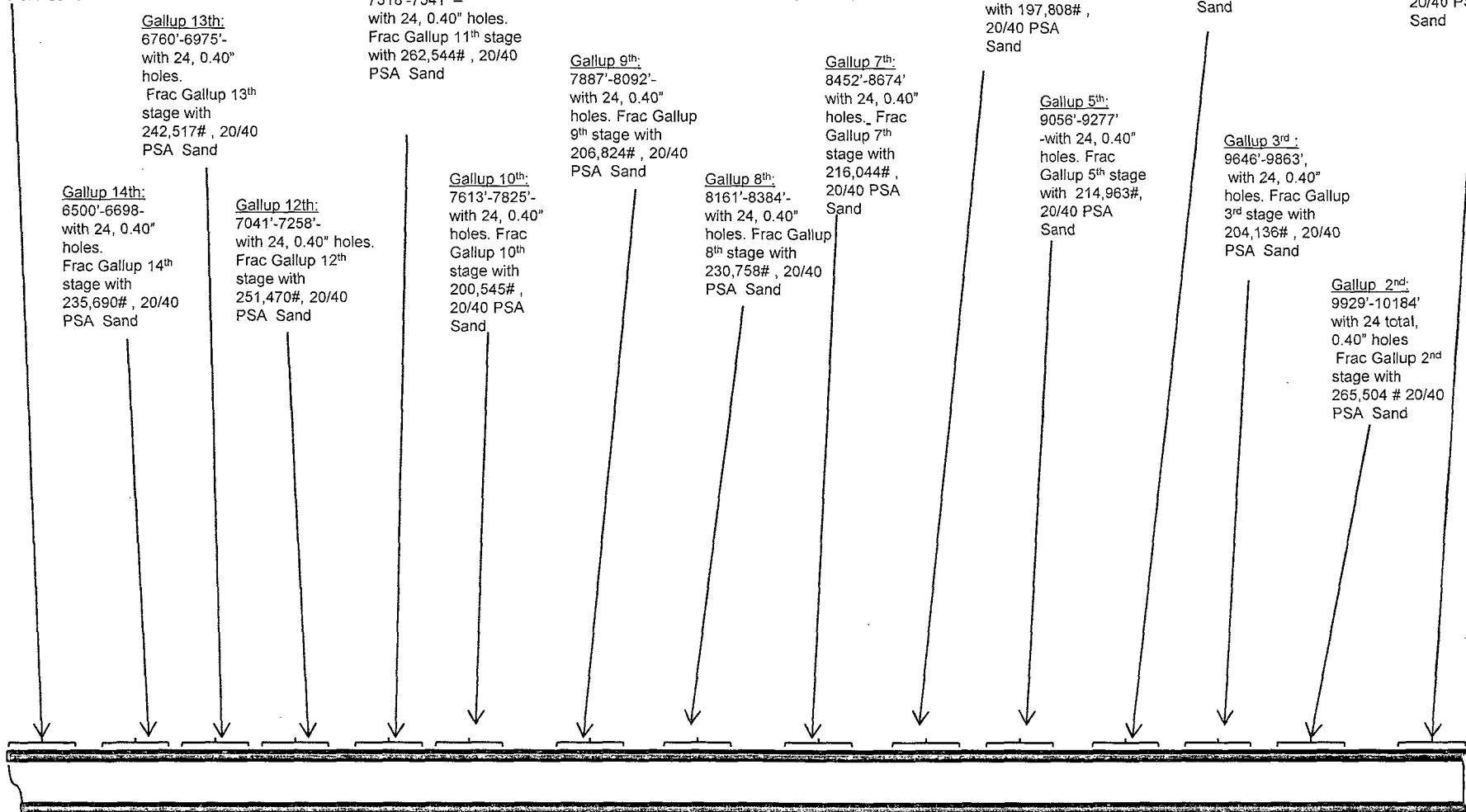
Gallup 4th:
9360'-9579'-
with 24, 0.40"
holes. Frac
Gallup 4th stage
with 201,776# ,
20/40 PSA
Sand

Gallup 3rd :
9646'-9863',
with 24, 0.40"
holes. Frac Gallup
3rd stage with
204,136# , 20/40
PSA Sand

Gallup 2nd:
9929'-10184'
with 24 total,
0.40" holes
Frac Gallup 2nd
stage with
265,504 # 20/40
PSA Sand

Gallup 1st:
10269'-10443' +
RSI TOOL @
10526' with 18,
0.42" holes
with 265,504 #
20/40 PSA
Sand

Chaco 2306-06L #239H LYBROOK GALLUP Horizontal (page 2 – lateral with completion)



See page 1 for upper portion of hole