

UNITED STATES  
DEPARTMENT OF THE INTERIOR  
BUREAU OF LAND MANAGEMENT

FORM APPROVED  
OMB No. 1004-0137  
Expires: July 31, 2010

SEP 11 2014

SUNDRY NOTICES AND REPORTS ON WELLS

~~Do not use this form for proposals to drill or to re-enter an abandoned well. Use Form 3160-3 (APD) for such proposals.~~

5. Lease Serial No.

SF-080672

6. If Indian, Allottee or Tribe Name

RCVD SEP 16 '14  
OIL CONS. DIV.

SUBMIT IN TRIPLICATE - Other instructions on page 2.

1. Type of Well

☐

Oil Well

☒

Gas Well

☐

Other

2. Name of Operator

Burlington Resources Oil & Gas Company LP

7. If Unit of CA/Agreement, Name and/or No.

San Juan 27-4 Unit

8. Well Name and No.

San Juan 27-4 Unit 154N

9. API Well No.

30-039-30489

3a. Address

PO Box 4289, Farmington, NM 87499

3b. Phone No. (include area code)

(505) 326-9700

10. Field and Pool or Exploratory Area

Blanco MV / Basin DK

4. Location of Well (Footage, Sec., T., R., M., or Survey Description)

Surface UL F (SENW), 1545' FNL & 2180' FWL, Sec. 14, T27N, R4W

Bottomhole UL B (NWNE), 710' FNL & 1890' FEL, Sec. 14, T27N, R4W

11. Country or Parish, State

Rio Arriba, DIST. 3  
New Mexico

12. CHECK THE APPROPRIATE BOX(ES) TO INDICATE NATURE OF NOTICE, REPORT OR OTHER DATA

TYPE OF SUBMISSION

TYPE OF ACTION

☒ Notice of Intent

☐ Subsequent Report

☐ Final Abandonment Notice

☐ Acidize

☐ Alter Casing

☐ Casing Repair

☐ Change Plans

☐ Convert to Injection

☐ Deepen

☐ Fracture Treat

☐ New Construction

☐ Plug and Abandon

☒ Plug Back

☐ Production (Start/Resume)

☐ Reclamation

☐ Recomplete

☐ Temporarily Abandon

☐ Water Disposal

☐ Water Shut-Off

☐ Well Integrity

☐ Other

13. Describe Proposed or Completed Operation: Clearly state all pertinent details, including estimated starting date of any proposed work and approximate duration thereof.

If the proposal is to deepen directionally or recompleat horizontally, give subsurface locations and measured and true vertical depths of all pertinent markers and zones. Attach the bond under which the work will be performed or provide the Bond No. on file with BLM/BIA. Required subsequent reports must be filed within 30 days following completion of the involved operations. If the operation results in a multiple completion or recompleat in a new interval, a Form 3160-4 must be filed once Testing has been completed. Final Abandonment Notices must be filed only after all requirements, including reclamation, have been completed and the operator has determined that the site is ready for final inspection.)

Burlington Resources requests permission to plug back the dakota formation per the attached procedure, current & proposed well bore schematics. A closed loop system will be utilized for this plugback. This well will now be a Blanco MV stand alone.

BLM'S APPROVAL OR ACCEPTANCE OF THIS  
ACTION DOES NOT RELIEVE THE LESSEE AND  
OPERATOR FROM OBTAINING ANY OTHER  
AUTHORIZATION REQUIRED FOR OPERATIONS  
ON FEDERAL AND INDIAN LANDS

14. I hereby certify that the foregoing is true and correct. Name (Printed/Typed)

Kenny Davis

Title Staff Regulatory Technician

Signature

Date

9/11/2014

THIS SPACE FOR FEDERAL OR STATE OFFICE USE

Approved by

Troy Salvors

Title

Petroleum Eng.

Date

9/15/2014

Conditions of approval, if any, are attached. Approval of this notice does not warrant or certify that the applicant holds legal or equitable title to those rights in the subject lease which would entitle the applicant to conduct operations thereon.

Office

FFO

Title 18 U.S.C. Section 1001 and Title 43 U.S.C. Section 1212, make it a crime for any person knowingly and willfully to make to any department or agency of the United States any false, fictitious or fraudulent statements or representations as to any matter within its jurisdiction.

(Instruction on page 2)

NMOCDAV

**ConocoPhillips**  
**SAN JUAN 27-4 UNIT 154N**  
**Expense - Plugback**

Lat 36° 34' 34.111" N

Long 107° 13' 17.353" W

**PROCEDURE**

1. Hold pre-job safety meeting. Comply with all NMOCD, BLM, and COPC safety and environmental regulations. Test rig anchors prior to moving in rig. **Notify BLM and NMOCD 24 hours prior to start of operations.**
2. MIRU work over rig. Check casing, tubing, and bradenhead pressures and record them in Wellview. **If there is pressure on the BH, contact Wells Engineer.**
3. Remove existing piping on casing valve. RU blow lines from casing valves and begin blowing down casing pressure. Pressure test tubing to 1000 psi before unseating the pump, release pressure.
4. Unseat pump & kill well with 2% KCL water as necessary.
5. TOO H and LD rod string (per pertinent data sheet).
6. Ensure barriers are in place. ND wellhead and NU BOPE. Pressure and function test BOP to 250 psi low and 2000 psi held and charted for 10 minutes as per COP Well Control Manual. PU and remove tubing hanger. Record pressure test in Wellview.
7. RU Tuboscope Unit to inspect tubing. TOO H with tubing (per pertinent data sheet). LD and replace any bad joints and record findings in Wellview. **Make note of corrosion, scale, or paraffin and save a sample to give to the engineer for further analysis.**
8. PU 3-7/8" string mill and bit and CO to the top of the Dakota perms @ 8520' using the air package. TOO H. LD mill and bit. If fill could not be CO to top of Dakota perms, call Wells Engineer.
9. Set CIBP @ 8470' on tubing. TOC @ 3490 per CBL on 8/16/2010. ✓

**All cement volumes use 100% excess outside pipe and 50' excess inside pipe. The stabilizing wellbore fluid will be 8.3 ppg, sufficient to balance all exposed formation pressures. All cement will be ASTM Class B mixed at 15.6 ppg with a 1.18 cf/sk yield.** ✓

**10. Plug 1 (Dakota and Graneros Formation Tops, 8470'-8370', 12 Sacks Class B Cement)** ✓

Mix 12 sx Class B cement and place a plug inside the casing to cover the Dakota and Graneros formation tops. POOH.

11. TIH with tubing using Tubing Drift Procedure (detail below).

		Tubing and BHA Description	
Tubing Wt/Grade:	4.7#, J-55	1	2-3/8" Expendable Check
Tubing Drift ID:	1.901"	1	2-3/8" (1.78" ID) F-Nipple
		1	2-3/8" Tubing Joint
Land Tubing At:	6540'	1	2-3/8" Pup Joint (2' or 4')
KB:	16'	+/- 205	2-3/8" Tubing Joints
		As Needed	2-3/8" Pup Joints to space
		1	2-3/8" Tubing Joint

12. Ensure barriers are holding. ND BOPE, NU wellhead. Pressure test tubing slowly with an air package as follows: pump 3 bbls pad, drop steel ball, pressure tubing up to 500 psi, and bypass air. **Monitor pressure for 15 mins, inspect WH and tree for leaks,** then complete the operation by pumping off the expendable check. **Note in Wellview the WH equipment test and the pressure at which the check pumped off.** Purge air as necessary. Notify the MSO that the well is ready to be turned over to Production Operations. RDMO. ✓

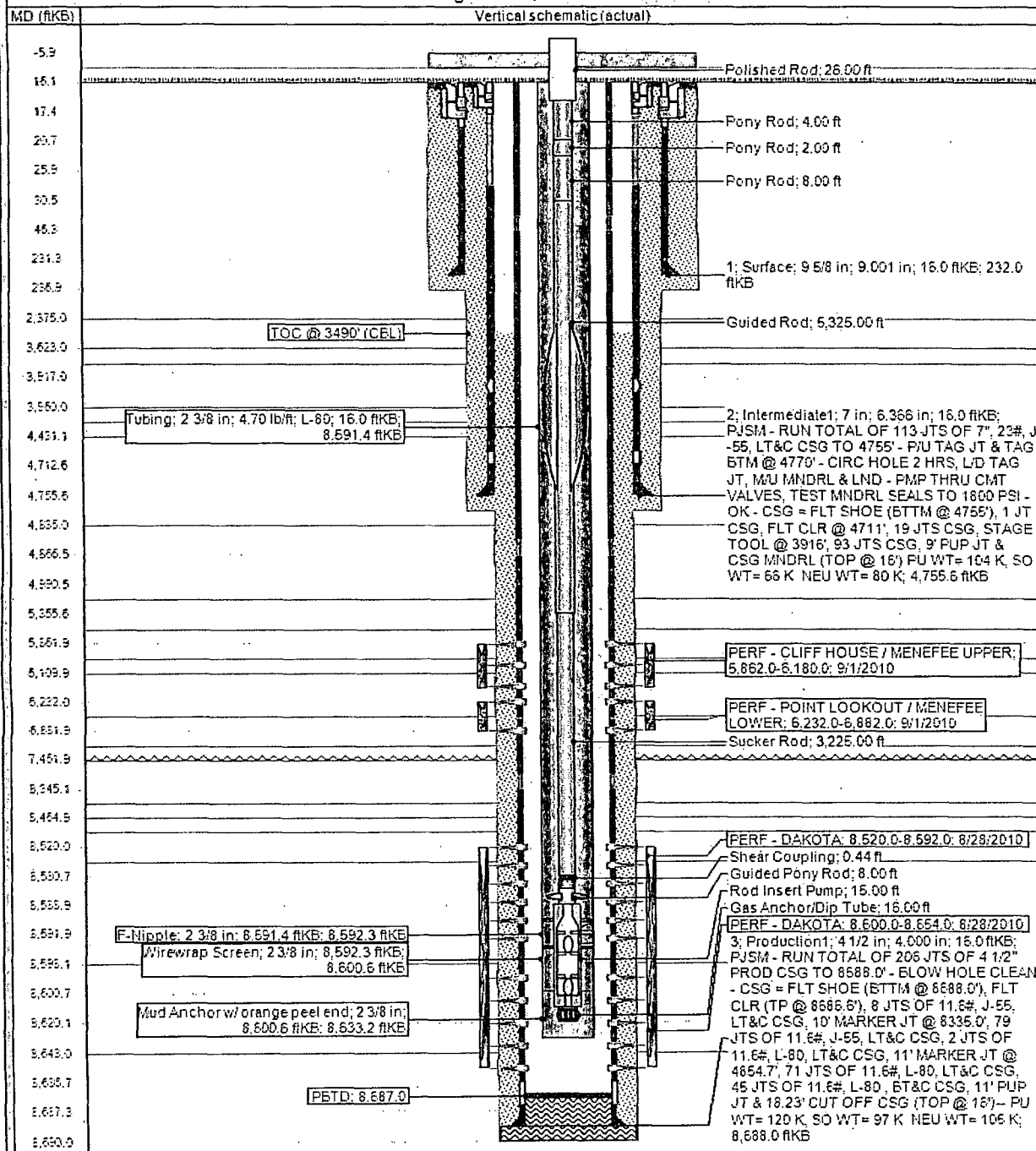
**ConocoPhillips**

Well Name: **SAN JUAN 27-4 UNIT #154N**

**Current Schematic**

API Well No. 3003930489	Surface Legal Location D14-027N-004W-F	Field Name MW/DK COM	License No.	State/Province NEW MEXICO	Well Completion Type DEVIATED
Ground Elevation (ft) 7,130.00	Original CAS RT Elevation (ft) 7,146.00	CS- Ground Distance (ft) 16.00	CS- Casing Flange Distance (ft)	CS- Tubing Hanger Distance (ft)	

DEVIATED - Original Hole, 8/14/2014 12:58:43 PM



**ConocoPhillips**

Well Name: **SAN JUAN 27-4 UNIT #154N**

**Proposed Schematic**

API / UWI	Surface Legal Location	Field Name	License No.	State Province	Well Configuration Type
3003930489	014-027N-004W-F	MV/DK COM		NEW MEXICO	DEVIATED
Ground Elevation (ft)	Original KB RT Elevation (ft)	KB - Ground Distance (ft)	KB - Casing Change Distance (ft)	KB - Typing Change Distance (ft)	
7,130.00	7,146.00		16.00		

DEVIATED - Original Hole, 1/1/2020 8:00:00 AM

Vertical schematic (actual)	MD (ftKB)	Formation Tops
	0.0	
	17.4	
	25.9	
	34.1	
Tubing: 2 3/8 in; 4.70 lb/ft; J-55; 16.0 ftKB: 47.3 ftKB	47.2	
Tubing Pup Joint: 2 3/8 in; 4.70 lb/ft; J-55; 47.3 ftKB: 49.3 ftKB	76.1	
	232.0	
	1,953.4	
Tubing: 2 3/8 in; 4.70 lb/ft; J-55; 49.3 ftKB: 6,504.8 ftKB [TOC @ 3490' (CBL)]	3,490.2	NACIMIENTO
	3,841.9	OJO ALAMO KIRTLAND
	3,919.3	
	4,234.9	FRUITLAND PICTURED CLIFFS LEWIS
	4,711.6	
	4,754.6	
	4,770.0	
	4,854.7	HUERFANITO, BENTON...
	4,947.6	
	5,240.2	CHACRA UPPER CLIFF HOUSE
	5,851.9	MASSIVE CLIFF HOUSE MENEFFEE
Tubing Pup Joint: 2 3/8 in; 4.70 lb/ft; J-55; 6,504.8 ftKB: 6,505.8 ftKB	6,109.9	
Tubing: 2 3/8 in; 4.70 lb/ft; J-55; 6,505.8 ftKB: 6,537.9 ftKB	6,232.0	
Nipple F: 2 3/8 in; 6,537.9 ftKB; 6,539.0 ftKB	6,504.9	POINT LOOKOUT
Expendable Check: 2 3/8 in; 6,539.0 ftKB: 6,540.0 ftKB	6,538.1	
	6,540.0	
	6,984.9	MANCOS GALLUP
	8,335.0	
	8,370.1	
	8,464.9	GREENHORN GRANEROS
	8,471.1	
	8,520.0	TWO WELLS
	8,591.9	PAGUATE
	8,591.9	CUBERO
	8,600.1	LOWER CUBERO
	8,653.9	
	8,667.0	
	8,688.0	
Bridge Plug - Permanent; 8,470.0- 8,471.0		
PBTD: 8,667.0		