

Chaco 2307-12L #171H CHACO UNIT NE HZ (OIL)(page 1)

Spud: 6/25/14

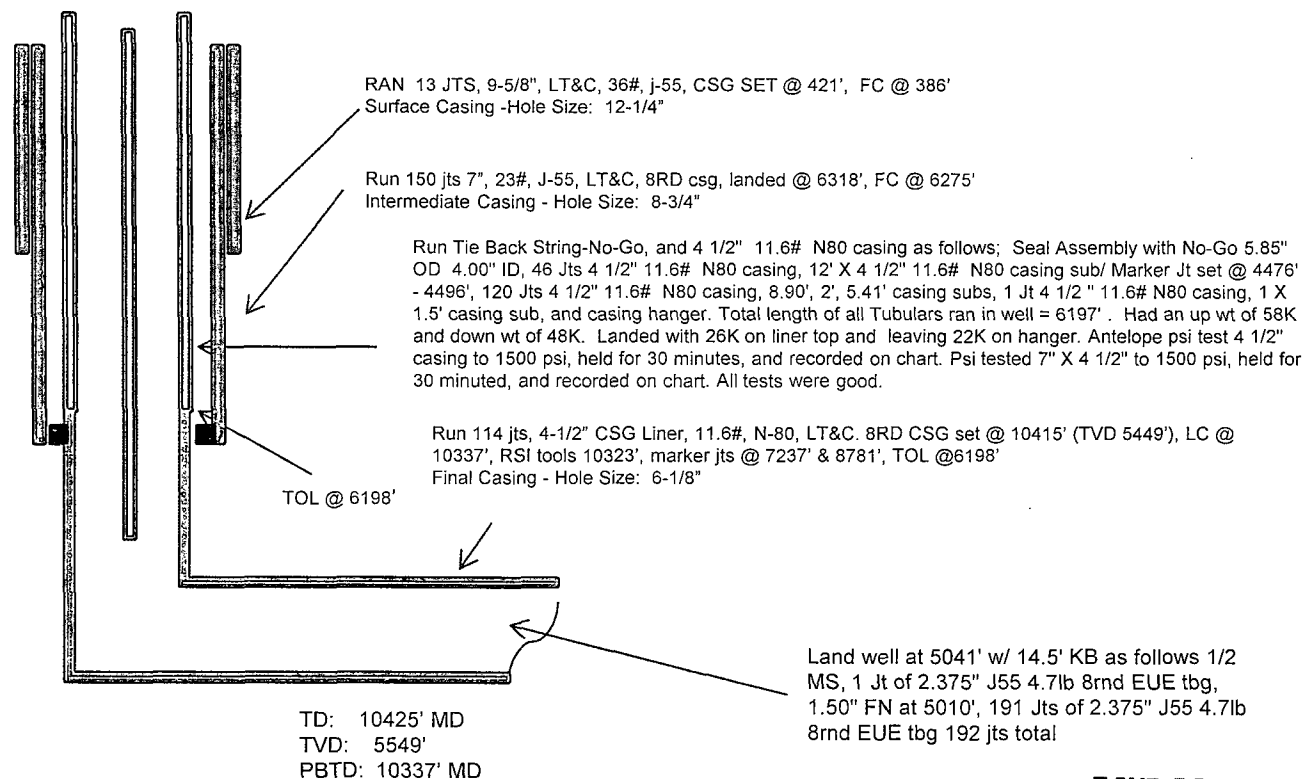
Completed: 10/7/14

SHL: 1987' FSL & 331' FWL
NW/4 SW/4 Section 12(L), T23N, R7W

BHL: 2398' FSL & 1728' FWL
NE/4 SW/4 Section 11 (H), T23N, R 7W

RIO ARRIBA NM
Elevation: 7002
API: 30-039-31217

Tops	MD	TVD
Ojo Alamo	1400'	1393
Kirtland	1748'	1716'
Pictured Cliffs	2072'	2012'
Lewis	2174'	2103'
Chacra	2548'	2440'
Cliff House	3748'	3542'
Menefee	3808'	3597'
Point Lookout	4552'	4286'
Mancos	4774'	4489'
Gallup	5207'	4898'



CONFIDENTIAL

HOLE SIZE	CASING	CEMENT	VOLUME	CMT TOP
12-1/4"	9-5/8"	245 sx	222 cu.ft.	Surface
8-3/4"	7"	820 sx	1461 cu. ft.	Surface
6-1/8"	4-1/2"	360 sx	536 cu. ft.	TOL 6198'

Lg 10/9/14

RCVD OCT 16 '14
OIL CONS. DIV.
DIST. 3

N

Chaco 2307-12L #171H CHACO UNIT NE HZ (OIL)

(page 2 – lateral with completion)

Gallup 1st:
10168'-10274' +
RSI TOOL @
10327' with
217,116 # 20/40
PSA Sand

Gallup 4th:
9140'-9417'-
with 24, 0.40"
holes. Frac
Gallup 4th stage
with 210,000#,
20/40 PSA
Sand

Gallup 8th:
8071'-8232'- with 24,
0.40" holes. Frac Gallup
8th stage with 213,000#,
20/40 PSA Sand

Gallup 6th:
8598'-8770'-
with 24, 0.40"
holes. Frac
Gallup 6th stage
with 212,500# ,
20/40 PSA
Sand

Gallup 3rd :
9526'-9803'- with
24, 0.40" holes.
Frac Gallup 3rd
stage with
213,400#, 20/40
PSA Sand

Gallup 2nd:
9912'-10069'-
with 24 total,
0.40" holes.
Frac Gallup
2nd stage with
215,500#,
20/40 PSA
Sand

Gallup 5th:
8865'-9041'-with
24, 0.40"
holes. Frac
Gallup 5th stage
with 214,000#,
20/40 PSA
Sand

Gallup 7th:
8327'-8499'-
with 24, 0.40"
holes. Frac
Gallup 7th
stage with
213,500# ,
20/40 PSA
Sand

Gallup 9th:
7815'-7972'- with
24, 0.40" holes.
Frac Gallup 9th
stage with
221,603#, 20/40
PSA Sand

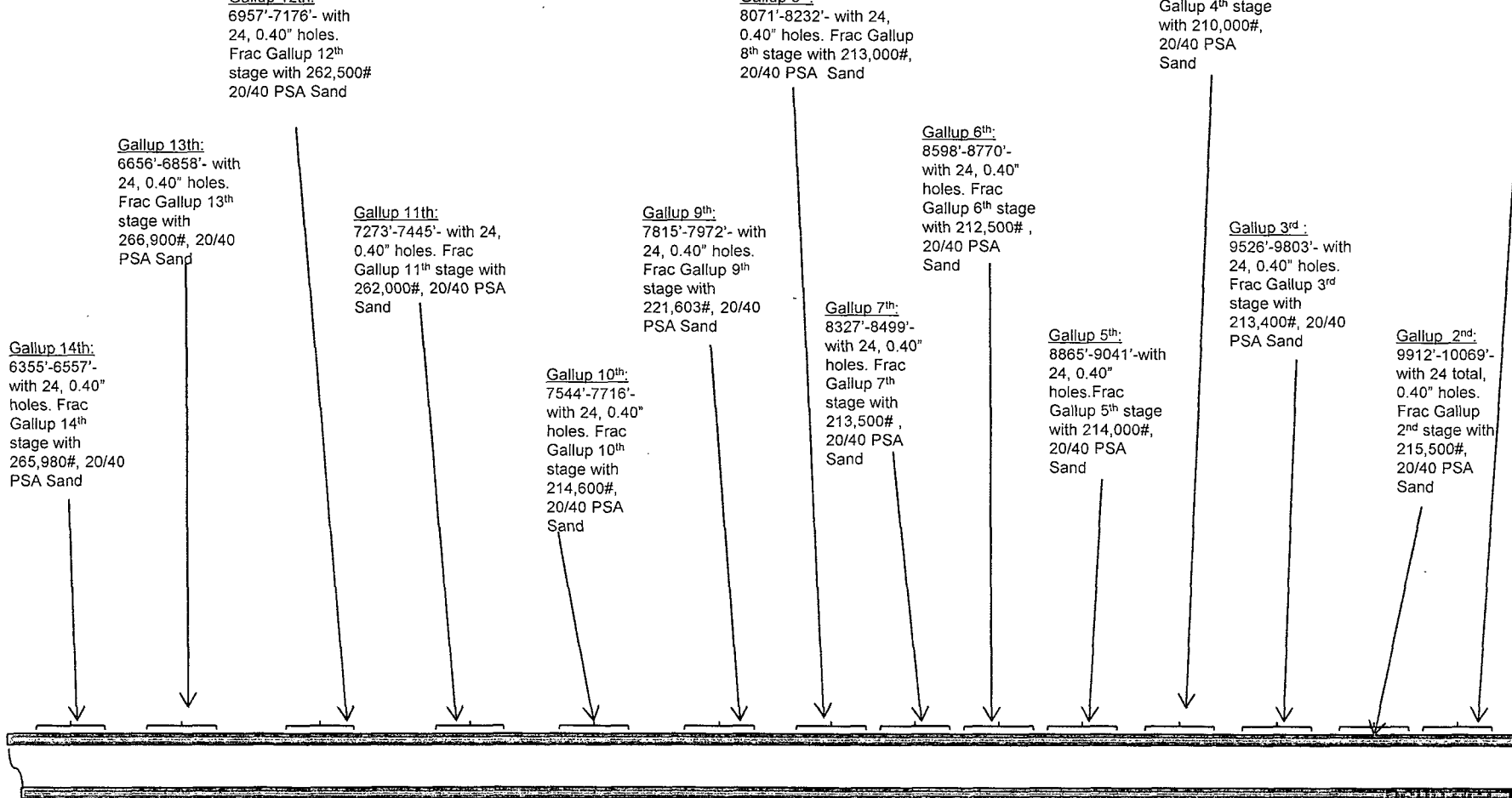
Gallup 10th:
7544'-7716'-
with 24, 0.40"
holes. Frac
Gallup 10th
stage with
214,600#,
20/40 PSA
Sand

Gallup 11th:
7273'-7445'- with 24,
0.40" holes. Frac
Gallup 11th stage with
262,000#, 20/40 PSA
Sand

Gallup 13th:
6656'-6858'- with
24, 0.40" holes.
Frac Gallup 13th
stage with
266,900#, 20/40
PSA Sand

Gallup 12th:
6957'-7176'- with
24, 0.40" holes.
Frac Gallup 12th
stage with 262,500#
20/40 PSA Sand

Gallup 14th:
6355'-6557'-
with 24, 0.40"
holes. Frac
Gallup 14th
stage with
265,980#, 20/40
PSA Sand



ACB-8-15-14
OIL CONS. DIV.
DIST. 3

See page 1 for upper portion of hole