

NE CHACO COM #240H

Chaco Unit NE HZ (oil) (page 1)

Spud: 6/11/14

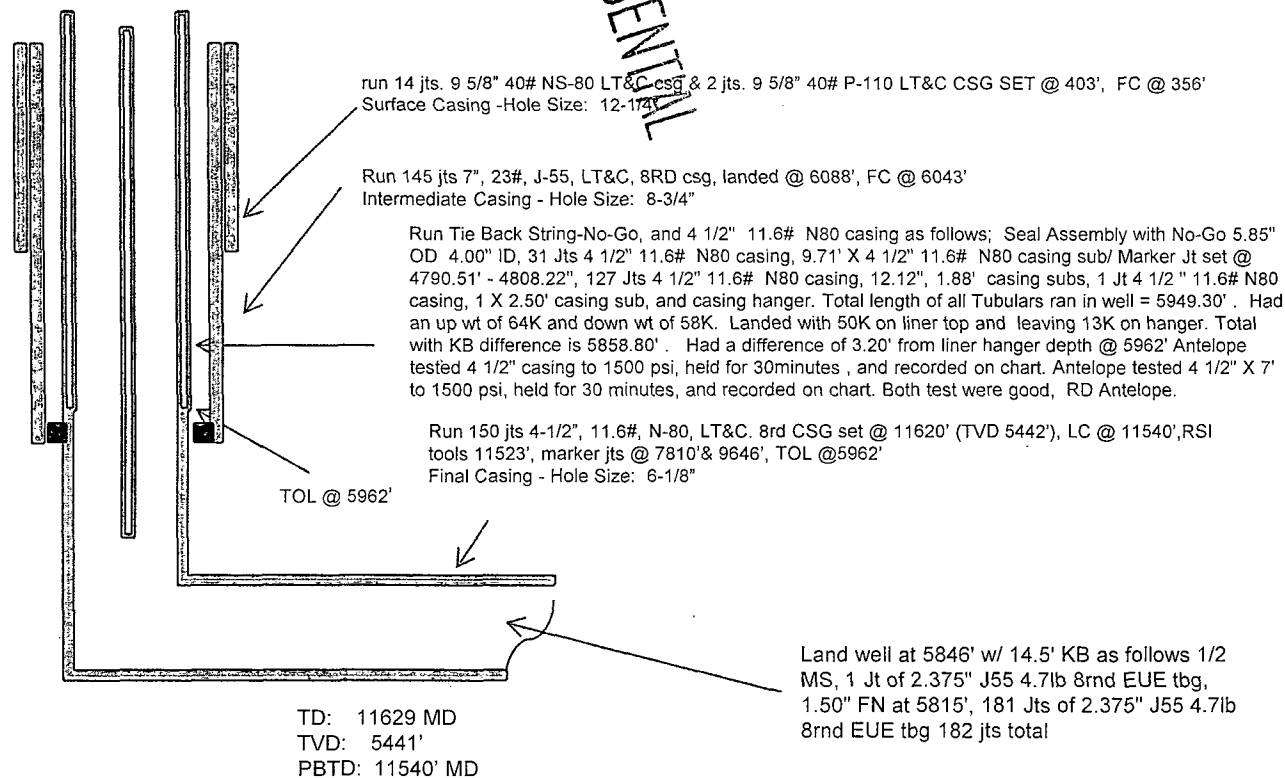
Completed: 10/16/14

SHL: 231' FSL & 195' FWL
SW/4 SW/4 Section 18(M), T23N, R6W

BHL: 873' FSL & 64' FEL
SE/4 SE/4 Section 14 (P), T23N, R 7W

RIO ARRIBA NM
Elevation: 6938'
API: 30-039-31235

Tops	MD	TVD
Ojo Alamo	1342'	1329'
Kirtland	1642'	1616'
Lewis	2032'	1989'
Chacra	2389'	2331'
Cliff House	3510'	3405'
Menefee	3528'	3422'
Point Lookout	4330'	4185'
Mancos	4506'	4353'
Gallup	4939'	4774'



HOLE SIZE	CASING	CEMENT	VOLUME	CMT TOP
12-1/4"	9-5/8"	245 sx	222 cu.ft.	Surface
8-3/4"	7"	882 sx	1308 cu.ft.	Surface
6-1/8"	4-1/2"	430 sx	582 cu. ft.	TOL 5962'

OIL CONS. DIV DIST. 3

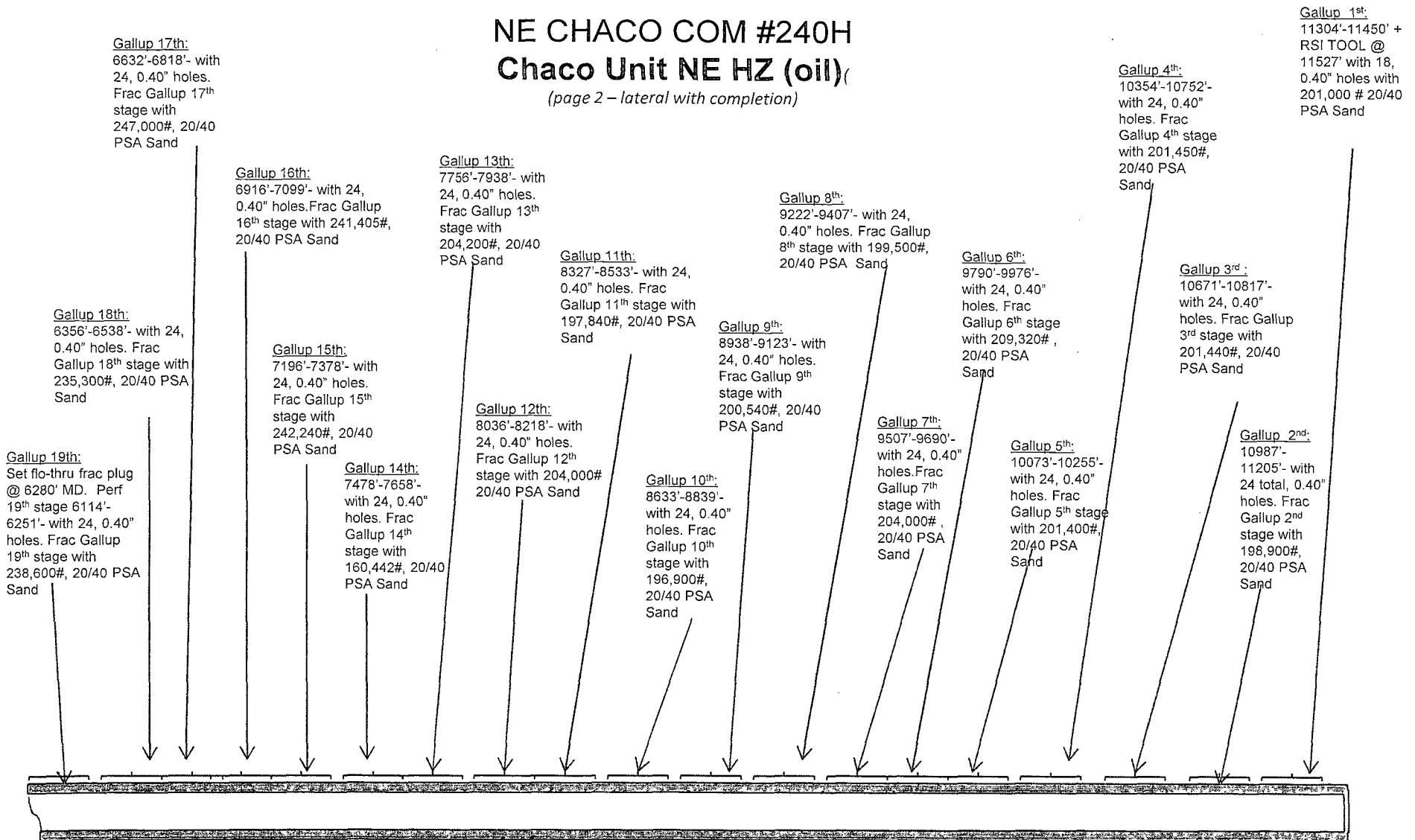
OCT 30 2014

Lg 10/27/14

FV

NE CHACO COM #240H Chaco Unit NE HZ (oil)

(page 2 – lateral with completion)



See page 1 for upper portion of hole

OIL CONS. DIV DIST. 3

OCT 30 2014