

Chaco 2308-06H #396H

Nageezi Gallup

(page 1)

Spud: 8/21/14

Completed: 10/29/14

OIL CONS. DIV DIST. 3

NOV 05 2014

SHL: 1737' FNL & 276' FEL
SE/4 NE/4 Section 6 (H), T23N, R8W

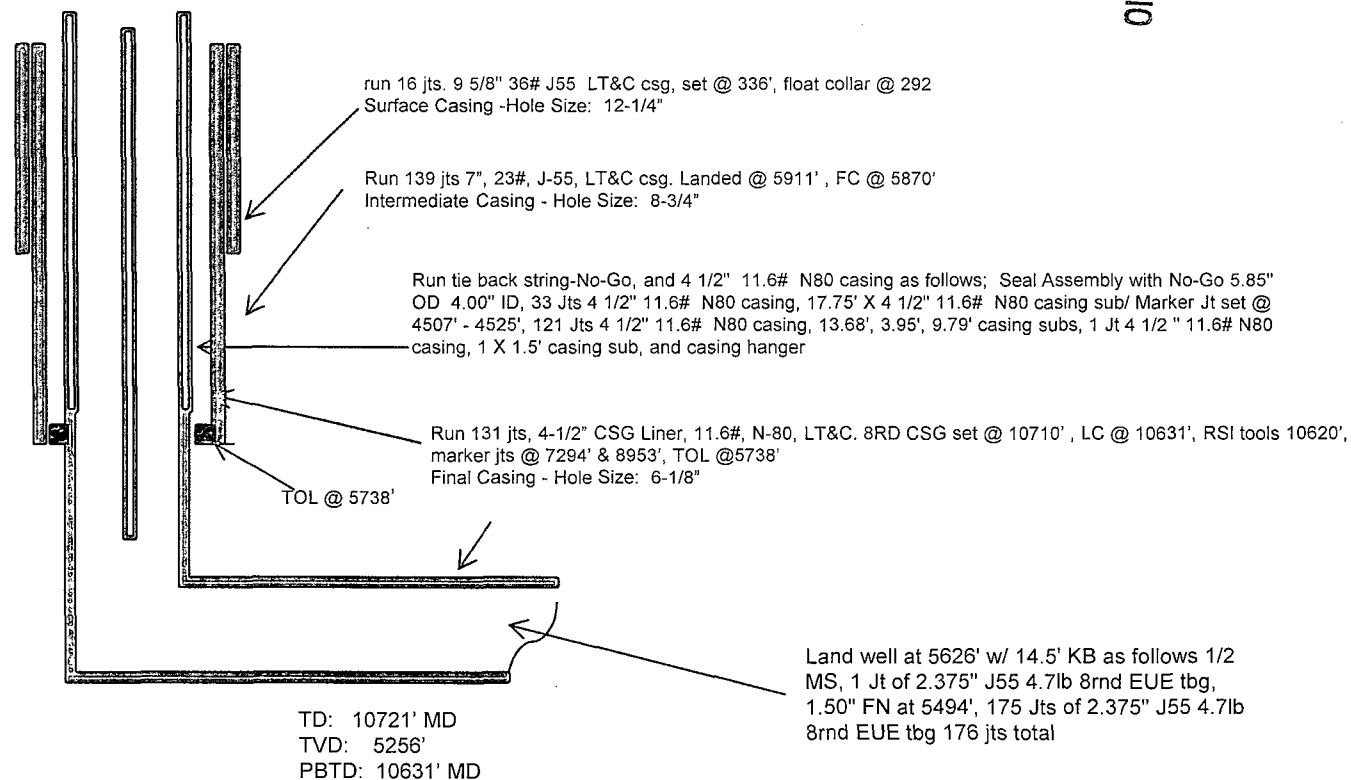
BHL: 1527' FNL & 233' FWL
SW/4 NW/4 Section 6 (E), T23N, R 8W

San Juan NM

Elevation: 6927'

API: 30-045-35554

Tops	MD	TVD
Ojo Alamo	1014	1011
Kirtland	1253	1244
Pictured Cliffs	1642	1617
Lewis	1744	1714
Chacra	2038	1994
Cliff House	3201	3099
Menefee	3252	3147
Point Lookout	4201	4062
Gallup	4737	4596



CONFIDENTIAL

HOLE SIZE	CASING	CEMENT	VOLUME	CMT TOP
12-1/4"	9-5/8"	101sx	163 cu.ft.	Surface
8-3/4"	7"			to c 1800'
6-1/8"	4-1/2"	490 sx	563 cu. ft.	TOL 5738'

Lg 10/30/14

Chaco 2308-06H #396H Nageezi Gallup

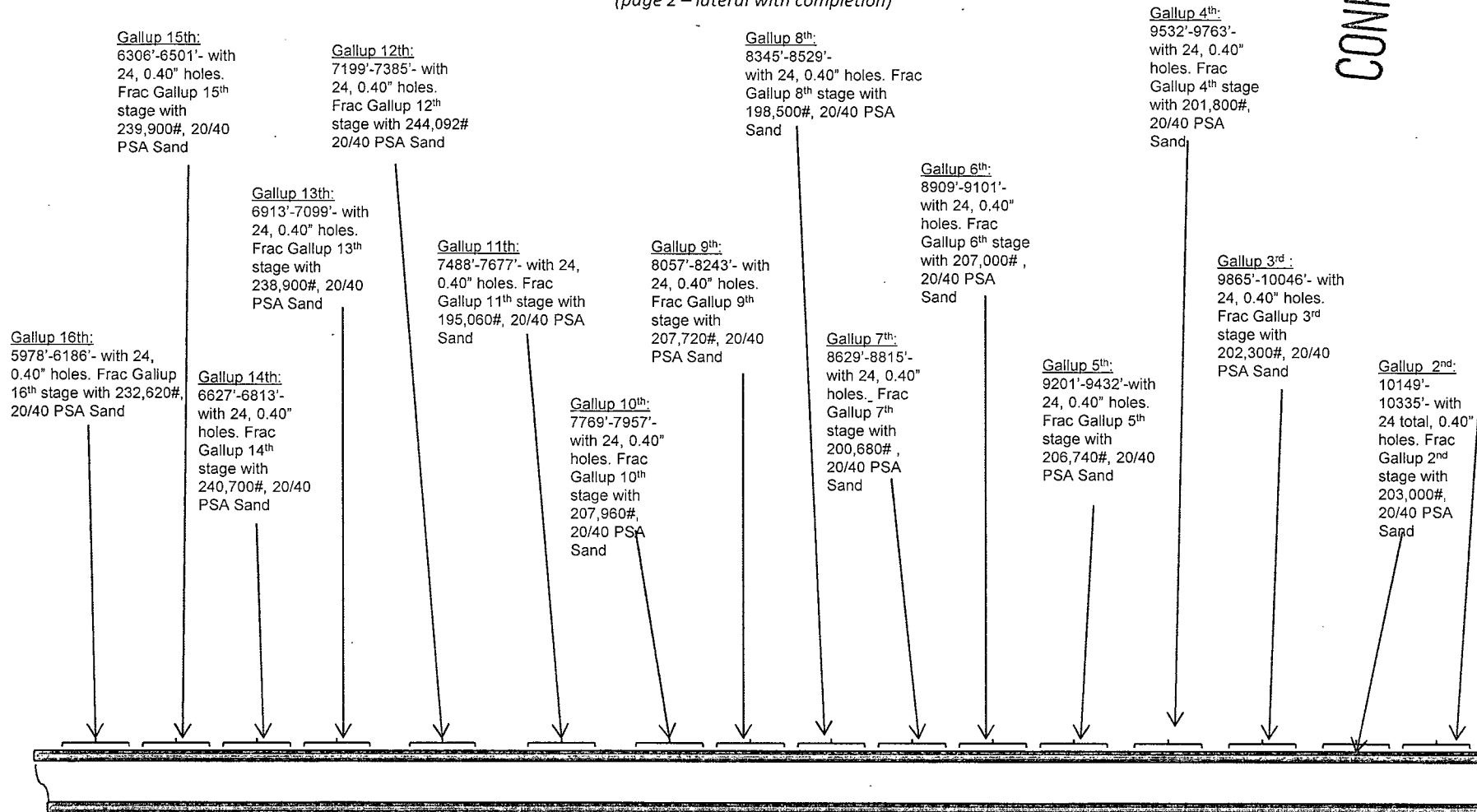
(page 2 – lateral with completion)

OIL CONS. DIV DIST.

NOV 05 2014

CONFIDENTIAL

Gallup 1st:
10435'-10560' +
RSI TOOL @
10622' 190,180
20/40 PSA
Sand



See page 1 for upper portion of hole