

UNITED STATES
DEPARTMENT OF THE INTERIOR
BUREAU OF LAND MANAGEMENT

SUBMIT IN
DUPLICATE

(See other instructions on
reverse side)

FORM APPROVED
OMB NO. 1004-0137
Expires: February 28, 1995

5. LEASE DESIGNATION AND LEASE NO.
NMSF-078362

6. IF INDIAN, ALLOTTEE OR

7. UNIT AGREEMENT NAME
CA 132829

8. FARM OR LEASE NAME, WELL NO.
NE CHACO COM #181H

9. API WELL NO.
30-039-31250

10. FIELD AND POOL, OR WILDCAT
**CHACO UNIT NE HZ
(OIL)**

11. SEC., T., R., M., OR BLOCK AND
SURVEY OR AREA
SEC 7 23N 6W

14. PERMIT NO.

DATE ISSUED

12. COUNTY OR
RIO ARriba

13. STATE
New Mexico

15. DATE
SPUDED
8/11/14

16. DATE T.D.
REACHED
10/5/14

17. DATE COMPLETED (READY TO PRODUCE)
11/11/14

18. ELEVATIONS (DK, RKB, RT, GR, ETC.)*
6950' GR

19. ELEVATION CASINGHEAD

20. TOTAL DEPTH, MD & TVD
**9759' MD
5546' TVD**

21. PLUG, BACK T.D., MD & TVD
**9667' MD
5547' TVD**

22. IF MULTICOMP.,
HOW MANY

23. INTERVALS
DRILLED BY

ROTARY TOOLS
x

CABLE TOOLS

24. PRODUCING INTERVAL(S), OF THIS COMPLETION - TOP, BOTTOM, NAME (MD AND TVD)*

CHACO UNIT NE HZ (OIL): 6241'-9667' MD

25. WAS DIRECTIONAL SURVEY MADE
YES

26. TYPE ELECTRIC AND OTHER LOGS RUN

27. WAS WELL CORED
No

28. CASING REPORT (Report all strings set in well)

CASING SIZE/GRADE	WEIGHT, LB/FT	DEPTH SET (MD)	HOLE SIZE	TOP OF CEMENT, CEMENTING RECORD	AMOUNT PULLED
9-5/8"	36#, J-55	423' MD	12-1/4"	245sx - surface	
7"	23#, J-55	6210' MD	8-3/4"	950 sx- surface	
4-1/2"	11.6#, N-80	6055' TOL	6-1/8"	None - this is a temporary tie back string used for stimulation. It will be removed when artificial lift is installed	

29. LINER RECORD

SIZE	TOP (MD)	BOTTOM (MD)	SACKS CEMENT*	SCREEN (MD)	SIZE	DEPTH SET (MD)	PACKER SET (MD)
4-1/2"	6055'	9756' MD	310sx-		2-3/8", 4.7#, J-55 EUE 8rd	5885'	

31. PERFORATION RECORD (Interval, size, and number)

CHACO UNIT NE HZ (OIL): 6241'-9667' MD

32. ACID, SHOT, FRACTURE, CEMENT SQUEEZE, ETC.
DEPTH INTERVAL (MD) AMOUNT AND KIND OF MATERIAL USED

RECEIVED

MAR 16 2015

NMOCD

DISTRICT III

GALLUP 12th - 24, 0.40" holes

ACCEPTED FOR RECORD

6241'-6457' 315,873# 20/40 PSA Sand

GALLUP 11th - 24, 0.40" holes

MAR 13 2015

6562'-6737' 315,054#, 20/40 PSA Sand

GALLUP 10th - 24, 0.40" holes

FARMINGTON FIELD OFFICE
BY: William Tambekou

6844'-7030' 314,620#, 20/40 PSA Sand

GALLUP 9th - 24, 0.40" holes

7130'-7317' 256,160#, 20/40 PSA Sand

GALLUP 8th - 24, 0.40" holes

NMOCD

7420'-7606' 252,613#, 20/40 PSA Sand

GALLUP 7th – 24, 0.40" holes

GALLUP 6th – 24, 0.40" holes

GALLUP 5th – 24, 0.40" holes

GALLUP 4th – 24, 0.40" holes

GALLUP 3rd – 24, 0.40" holes

GALLUP 2nd – 24, 0.40" holes

GALLUP 1st – 24, 0.40" holes + RSI tool @ 9667'

7770'-7889'	248,980# , 20/40 PSA Sand
7988'-8175'	247,180# , 20/40 PSA Sand
8274'-8467'	244,460# , 20/40 PSA Sand
8560'-8746'-	248,500# , 20/40 PSA Sand
8846'-9025'	247,220# , 20/40 PSA Sand
9132'-9348'	249,700# , 20/40 PSA Sand
9447'-9667'	250,100 # 20/40 PSA Sand

33. PRODUCTION

DATE OF FIRST PRODUCTION		PRODUCTION METHOD (Flowing, gas lift, pumping-size and type of pump)				WELL STATUS (PRODUCING OR SI)	
11/11/14		Flowing				POW	
DATE OF TEST	TESTED	CHOKE SIZE	PROD'N FOR TEST PERIOD	OIL - BBL.	GAS - MCF	WATER - BBL.	GAS-OIL RATIO
11/11/14	24 HRS	1"		591	3465	256	
FLOW TBG PRESS	CASING PRESSURE	CALCULATED 24-HOUR RATE		OIL - BBL.	GAS - MCF	WATER - BBL.	OIL GRAVITY-API (CORR.)
485	1162						

34. DISPOSITION OF GAS (Sold, used for fuel, vented, etc.): non flaring

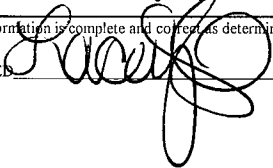
TEST WITNESSED BY:

35. LIST OF ATTACHMENTS: SUMMARY OF POROUS ZONES, WELLBORE DIAGRAM, Directional EOW report

36. I hereby certify that the foregoing and attached information is complete and correct as determined from all available records

PRINTED NAME Lacey Granillo

SIGNED



TITLE Permit Tech

DATE 3/10/15

37. SUMMARY OF POROUS ZONES: (Show all important zones of porosity and contents thereof; cored intervals, and all drill-stem, tests, including depth interval tested, cushion used, time tool open, flowing and shut-in pressures, and recoveries):						38.GEOLOGIC MARKERS	
FORMATION	TOP		BOTTOM		DESCRIPTION, CONTENTS, ETC.	NAME	
							NAME
Ojo Alamo	1549	1530					
Kirtland	1744	1718					
Picture Cliffs	2037	2001					
Lewis	2151	2111					
Chacra	2487	2438					
Cliff House	3625	3538					
Menefee	3672	3584					
Point Lookout	4397	4284					
Mancos	4626	4503					
Gallup	5044	4909					

NE CHACO COM #181H

CHACO UNIT NE HZ (OIL) (page 1)

Spud: 8/11/14

Completed: 11/614

AMENDED

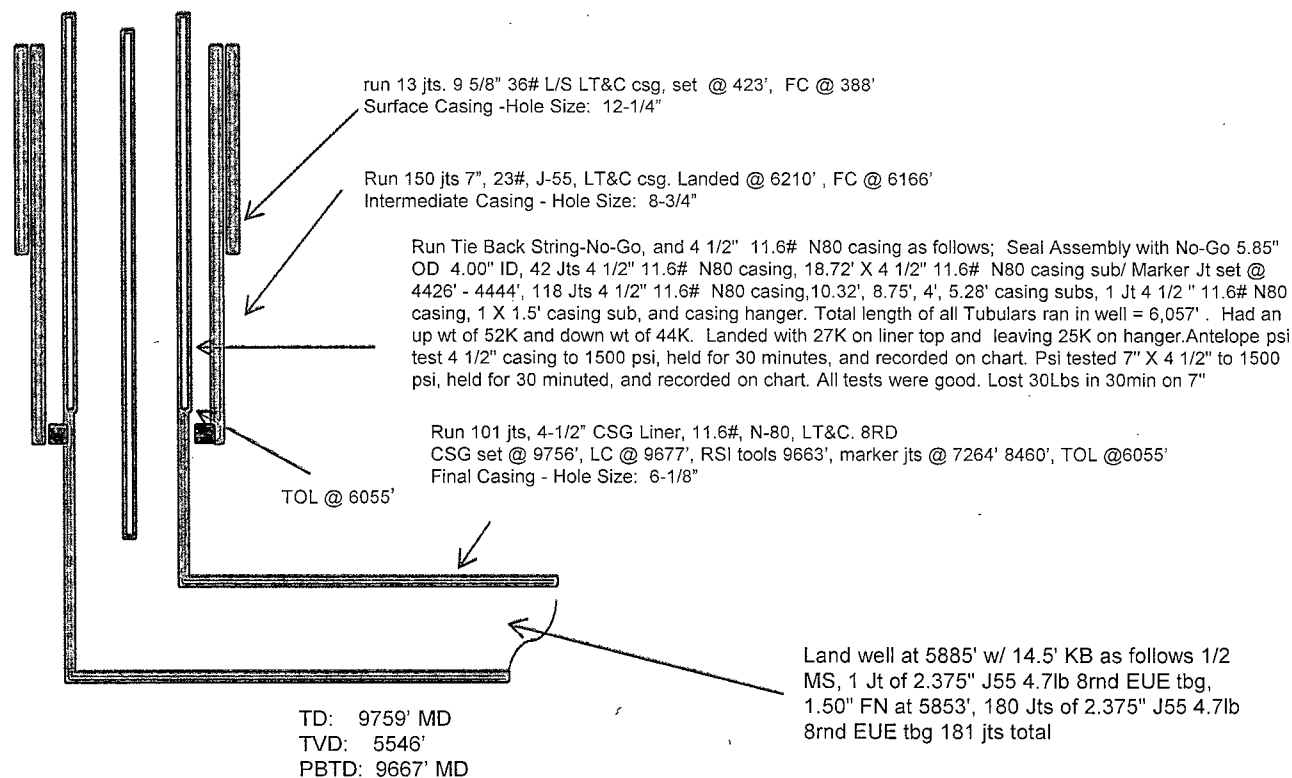
TOPS:3/10/15

SHL: 1979' FSL & 302' FWL
NW/4 SW/4 Section 7(L), T23N, R6W

BHL: 646' FNL & 1740' FWL
NE/4 NW/4 Section 12 (C), T23N, R 7W

RIO ARRIBA NM
Elevation: 6950
API: 30-039-31250

Tops	MD	TVD
Ojo Alamo	1549	1530
Kirtland	1744	1718
Picture Cliffs	2037	2001
Lewis	2151	2111
Chacra	2487	2438
Cliff House	3625	3538
Menefee	3672	3584
Point Lookout	4397	4284
Mancos	4626	4503
Gallup	5044	4909



HOLE SIZE	CASING	CEMENT	VOLUME	CMT TOP
12-1/4"	9-5/8"	245 sx	222 cu.ft.	Surface
8-3/4"	7"	950 sx	1461 cu. ft.	Surface
6-1/8"	4-1/2"	310 sx	536 cu. ft.	TOL 6055'

Lg 3/10/15

NE CHACO COM #181H CHACO UNIT NE HZ (OIL)

(page 2 – lateral with completion)

Gallup 4th:
8560'-8746'-
with 24, 0.40"
holes. Frac
Gallup 4th stage
with 248,500#,
20/40 PSA
Sand

Gallup 1st:
9447'-9591' +
RSI TOOL @
9667' with
250,100 # 20/40
PSA Sand

Gallup 12th:
6241'-6457'- with
24, 0.40" holes.
Frac Gallup 12th
stage with 315,873#
20/40 PSA Sand

Gallup 8th:
7420'-7606'- with 24,
0.40" holes. Frac Gallup
8th stage with 252,613#,
20/40 PSA Sand

Gallup 6th:
7988'-8175'-
with 24, 0.40"
holes. Frac
Gallup 6th stage
with 247,180# ,
20/40 PSA
Sand

Gallup 3rd:
8846'-9025'- with
24, 0.40" holes.
Frac Gallup 3rd
stage with
247,220#, 20/40
PSA Sand

Gallup 2nd:
9132'-9348'-
with 24 total,
0.40" holes.
Frac Gallup
2nd stage with
249,700#,
20/40 PSA
Sand

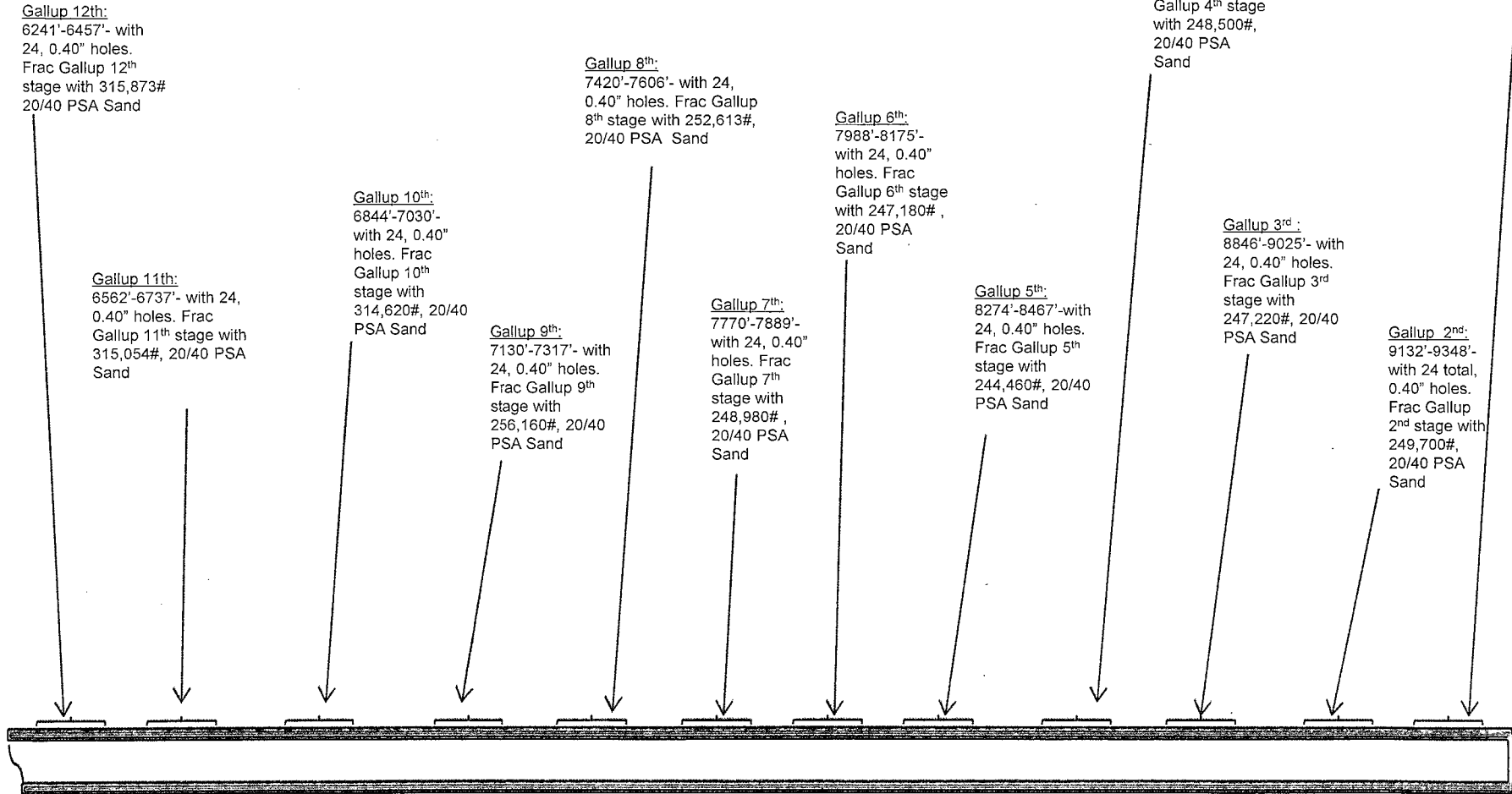
Gallup 5th:
8274'-8467'-with
24, 0.40" holes.
Frac Gallup 5th
stage with
244,460#, 20/40
PSA Sand

Gallup 7th:
7770'-7889'-
with 24, 0.40"
holes. Frac
Gallup 7th
stage with
248,980# ,
20/40 PSA
Sand

Gallup 9th:
7130'-7317'- with
24, 0.40" holes.
Frac Gallup 9th
stage with
256,160#, 20/40
PSA Sand

Gallup 10th:
6844'-7030'-
with 24, 0.40"
holes. Frac
Gallup 10th
stage with
314,620#, 20/40
PSA Sand

Gallup 11th:
6562'-6737'- with 24,
0.40" holes. Frac
Gallup 11th stage with
315,054#, 20/40 PSA
Sand



See page 1 for upper portion of hole