

NE CHACO COM #176H CHACO UNIT NE HZ (OIL)(page 1)

Spud: 10/5/14

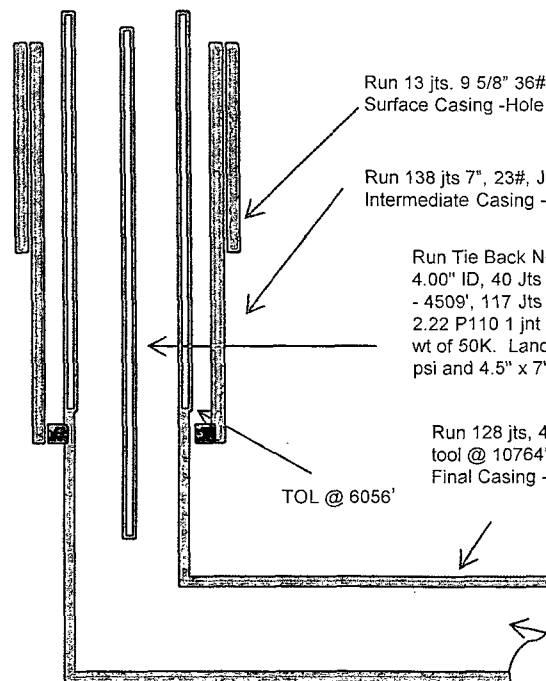
Completed: 12/22/14

SHL: 1120' FNL & 736' FWL
NW/4 NW/4 Section 6(D), T23N, R6W

BHL: 386' FNL & 229' FWL
NW/4 NW/4 Section 1 (D), T23N, R 7W

RIO ARRIBA NM
Elevation: 6982'
API: 30-039-31251

Tops	MD	TVD
OJO_ALAMO	1679	1662
KIRTLAND	1846	1827
PICTURE_CLIFFS	2158	2134
LEWIS	2264	2239
CHACRA	2598	2567
CLIFF_HOUSE	3715	3663
MENEFEE	3784	3731
PT_LOOKOUT	4471	4407
MANCOS	4678	4613
GALLUP	5104	5037



TD: 10870' MD
TVD: 5586'
PBSD: 10787' MD

Land well at 5929' w/ 14'5 KB as follows 1/2 MS, 1 Jt of 2.375" 4.7lb J55 8rnd EUE tbg, 1.50" FN @ 5897', 188 Jts of 2.375" 4.7lb J55 8rnd EUE tbg 189 jts 2.375 total

OIL CONS. DIV DIST. 3
JAN 09 2015

HOLE SIZE	CASING	CEMENT	VOLUME	CMT TOP
12-1/4"	9-5/8"	245 sx	222 cu.ft.	Surface
8-3/4"	7"	952 sx	1380 cu. ft.	Surface
6-1/8"	4-1/2"	375 sx	525 cu. ft.	TOL 6056'

CONFIDENTIAL

Lg 12/15/14

AY

NE CHACO COM #176H

CHACO UNIT NE HZ (OIL) (page 2 – lateral with completion)

Gallup 1st:
10579'-10704' +
RSI TOOL @
10767' with
215,345 # 20/40
PSA Sand

Gallup 4th:
9691'-9907'-
with 24, 0.40"
holes. Frac
Gallup 4th stage
with 214,356#,
20/40 PSA
Sand

Gallup 3rd:
10007'-10193'-
with 24, 0.40"
holes. Frac Gallup
3rd stage with
203,860#, 20/40
PSA Sand

Gallup 2nd:
10293'-10479'-
with 24 total,
0.40" holes.
Frac Gallup 2nd
stage with
215,809#, 20/40
PSA Sand

Gallup 5th:
9375'-9601'-with
24, 0.40" holes.
Frac Gallup 5th
stage with
215,978#, 20/40
PSA Sand

Gallup 6th:
9089'-9275'-
with 24, 0.40"
holes. Frac
Gallup 6th stage
with 214,937# ,
20/40 PSA
Sand

Gallup 7th:
8803'-8989'-
with 24, 0.40"
holes. Frac
Gallup 7th
stage with
215,408# ,
20/40 PSA
Sand

Gallup 8th:
8522'-8711'- with 24,
0.40" holes. Frac Gallup
8th stage with 215,399#,
20/40 PSA Sand

Gallup 9th:
8231'-8417'- with
24, 0.40" holes.
Frac Gallup 9th
stage with
215,621#, 20/40
PSA Sand

Gallup 10th:
7950'-8125'-
with 24, 0.40"
holes. Frac
Gallup 10th
stage with
216,143#,
20/40 PSA
Sand

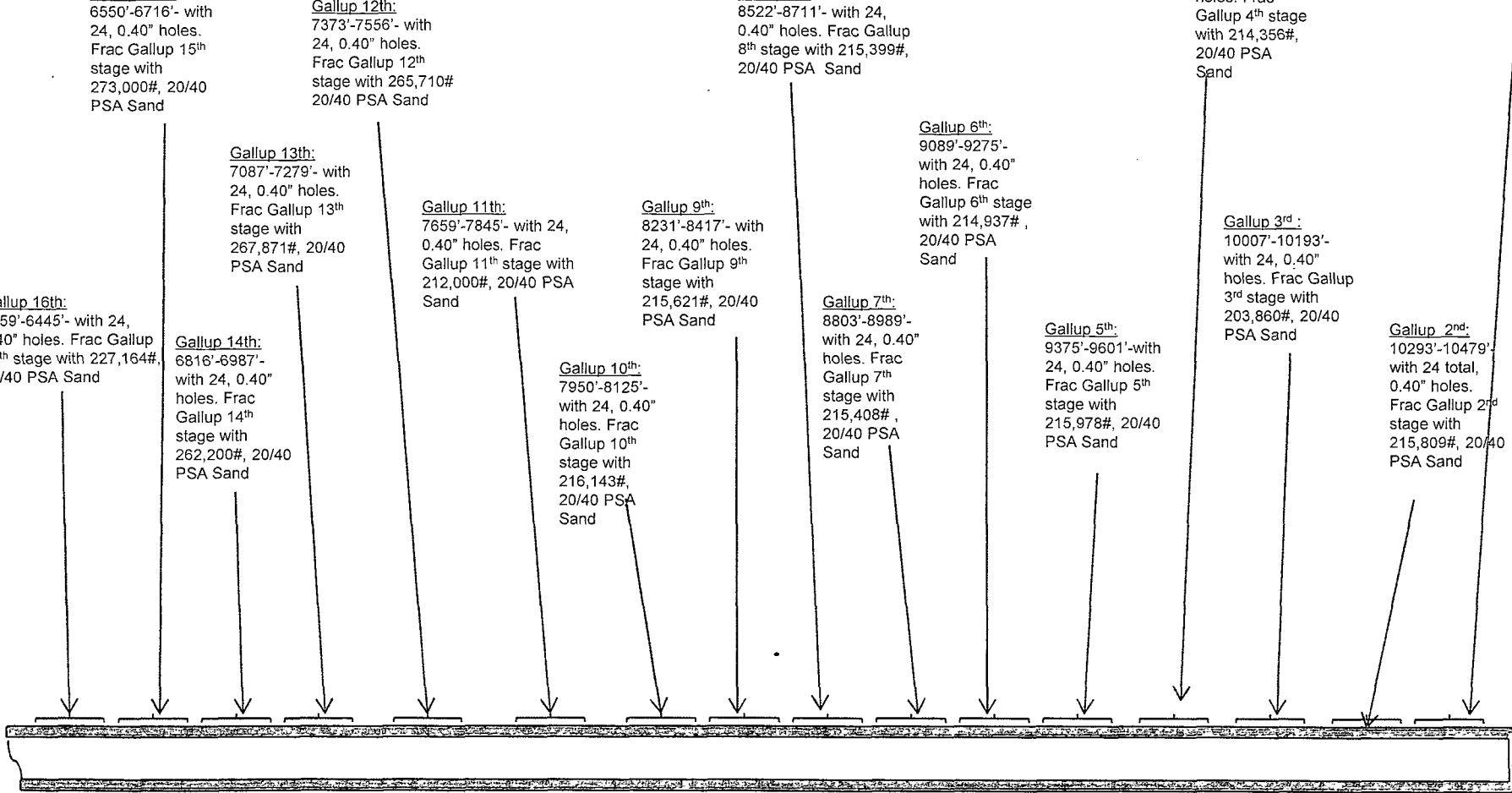
Gallup 11th:
7659'-7845'- with 24,
0.40" holes. Frac
Gallup 11th stage with
212,000#, 20/40 PSA
Sand

Gallup 13th:
7087'-7279'- with
24, 0.40" holes.
Frac Gallup 13th
stage with
267,871#, 20/40
PSA Sand

Gallup 14th:
6816'-6987'-
with 24, 0.40"
holes. Frac
Gallup 14th
stage with
262,200#, 20/40
PSA Sand

Gallup 15th:
6550'-6716'- with
24, 0.40" holes.
Frac Gallup 15th
stage with
273,000#, 20/40
PSA Sand

Gallup 16th:
6259'-6445'- with 24,
0.40" holes. Frac Gallup
16th stage with 227,164#,
20/40 PSA Sand



OIL CONS. DIV DIST. 3

See page 1 for upper portion of hole

JAN 09 2015