

UNITED STATES
DEPARTMENT OF THE INTERIOR
BUREAU OF LAND MANAGEMENT

RECEIVED

APR 21 2015

FORM APPROVED
OMB No. 1004-0137
Expires: July 31, 2010

SUNDRY NOTICES AND REPORTS ON WELLS
Do not use this form for proposals to drill or to re-enter an
abandoned well. Use Form 3160-3 (APD) for such proposals.

SUBMIT IN TRIPLICATE - Other instructions on page 2.

1. Type of Well

☐

Oil Well

☒

Gas Well

☐

Other

2. Name of Operator

Burlington Resources Oil & Gas Company LP

3a. Address

PO Box 4289, Farmington, NM 87499

3b. Phone No. (include area code)

(505) 326-9700

4. Location of Well (Footage, Sec., T., R., M., or Survey Description)

Surface

UL A (NENE), 990' FNL & 820' FEL, SEC. 22, T27N, R9W

5. Lease Serial No.

SF-078356

6. If Indian, Allottee or Tribe Name

7. If Unit of CA/Agreement, Name and/or No.

Huerfanito Unit

8. Well Name and No.

Huerfanito Unit 96

9. API Well No.

30-045-12051

10. Field and Pool or Exploratory Area

BASIN DAKOTA

11. Country or Parish, State

San Juan

New Mexico

12. CHECK THE APPROPRIATE BOX(ES) TO INDICATE NATURE OF NOTICE, REPORT OR OTHER DATA

TYPE OF SUBMISSION

☒ Notice of Intent

☐ Subsequent Report

☐ Final Abandonment Notice

TYPE OF ACTION

☐ Acidize

☐ Alter Casing

☐ Casing Repair

☐ Change Plans

☐ Convert to Injection

☐ Deepen

☐ Fracture Treat

☐ New Construction

☒ Plug and Abandon

☐ Plug Back

☐ Production (Start/Resume)

☐ Reclamation

☐ Recomplete

☐ Temporarily Abandon

☐ Water Disposal

☐ Water Shut-Off

☐ Well Integrity

☒ Other

13. Describe Proposed or Completed Operation: Clearly state all pertinent details, including estimated starting date of any proposed work and approximate duration thereof. If the proposal is to deepen directionally or recompleat horizontally, give subsurface locations and measured and true vertical depths of all pertinent markers and zones. Attach the bond under which the work will be performed or provide the Bond No. on file with BLM/BIA. Required subsequent reports must be filed within 30 days following completion of the involved operations. If the operation results in a multiple completion or recompleat in a new interval, a Form 3160-4 must be filed once Testing has been completed. Final Abandonment Notices must be filed only after all requirements, including reclamation, have been completed and the operator has determined that the site is ready for final inspection.)

Burlington Resources requests permission to P&A the subject well per the attached procedure, current and proposed wellbore schematics. The Pre-Disturbance onsite was held on 4/16/15 with Bob Switzer/BLM. A Closed Loop system will be utilized for this P&A.

OIL CONS. DIV DIST. 3

SEE ATTACHED FOR
CONDITIONS OF APPROVAL

APR 28 2015

Notify NMOCD 24 hrs
prior to beginning
operations

BLM'S APPROVAL OR ACCEPTANCE OF THIS
ACTION DOES NOT RELIEVE THE LESSEE AND
OPERATOR FROM OBTAINING ANY OTHER
AUTHORIZATION REQUIRED FOR OPERATIONS
ON FEDERAL AND INDIAN LANDS

14. I hereby certify that the foregoing is true and correct. Name (Printed/Typed)

Patsy Clugston

Staff Regulatory Technician

Title

Signature

Patsy Clugston

Date

4/20/2015

THIS SPACE FOR FEDERAL OR STATE OFFICE USE

Approved by

Troy Salvors

Title

PE

Date

4/22/2015

Conditions of approval, if any, are attached. Approval of this notice does not warrant or certify that the applicant holds legal or equitable title to those rights in the subject lease which would entitle the applicant to conduct operations thereon.

Office

FFO

Title 18 U.S.C. Section 1001 and Title 43 U.S.C. Section 1212, make it a crime for any person knowingly and willfully to make to any department or agency of the United States any false, fictitious or fraudulent statements or representations as to any matter within its jurisdiction.

NMOCD

ConocoPhillips
HUERFANITO UNIT 96
Expense - P&A

Lat 36° 33' 54.792" N

Long 107° 46' 8.904" W

PROCEDURE

NOTE: Prior to MIRU, confirm with Wells Engineer and Regulatory that the BH pressure has reduced enough to P&A the well.
This project requires the use of an A-Plus steel tank to handle waste fluids circulated from the well and cement wash up.

1. Hold pre-job safety meeting. Comply with all NMOCD, BLM, and COPC safety and environmental regulations. Test rig anchors prior to moving in rig. Prior to MIRU, run slickline through the end of tubing to ensure it is clear.
2. MIRU workover rig. Check casing, tubing, and bradenhead pressures and record them in Wellview. **If there is pressure on the BH, contact the Wells Engineer.**
3. Remove existing piping on casing valve. RU blow lines from casing valves and begin blowing down casing pressure. Kill well as necessary. Ensure well is dead or on a vacuum.
4. ND wellhead and NU BOPE. Pressure and function test BOP to 250 psi low and 1,000 psi over SICP high to a maximum of 2,000 psi held and charted for 10 minutes as per COP Well Control Manual. PU and remove tubing hanger and tag for fill on top of CIBP at 6575'.
5. TOOH and visually inspect tubing for any corrosion or scale. The rig left all yellow band tubing during workover on 3/12/2015. If scale is present, consider running bit and mill prior to first cement retainer. Bit and mill trip was made and CBL was run during workover in 3/2015.

All cement volumes use 100% excess outside pipe and 50' excess inside pipe. The stabilizing wellbore fluid will be 8.3 ppg, sufficient to balance all exposed formation pressures. All cement will be ASTM Class B mixed at 15.6 ppg with a 1.18 cf/sk yield. Note: Hole in casing found from 6328 - 6359'. Spot or tag subsequent plugs as appropriate.

5. Plug 1 - Dakota and Graneros Formation Tops, 6475' - 6575', 12 Sacks Class B Cement

TIH with tubing. Drop standing valve and pressure test tubing. Retrieve standing valve. Mix 12 sx Class B cement and spot a balanced plug inside the casing to cover the Dakota and Graneros formation tops. PUH.

6. Plug 2 - Gallup Formation Top, 5680' - 5780', 12 Sacks Class B Cement

Mix 12 sx Class B cement and spot a balanced plug inside the casing to cover the Gallup formation top. POOH.

7. Plug 3 - Mancos Formation Top, 4834' - 4934', 51 Sacks Class B Cement

RIH and perforate 3 squeeze holes at 4934'. Establish injection rate into squeeze holes. RIH with a 4-1/2" CR and set at 4884'. Mix 51 sx Class B cement. Squeeze 39 sx outside the casing, leaving 12 sx inside the casing to cover the Mancos formation top. POOH.

8. Plug 4 - Mesaverde Formation Top, 3760' - 3860', 51 Sacks Class B Cement

Note: Cement questionable on CBL. May or may not be able to get rate into perfs at 3860' RIH and perforate 3 squeeze holes at 3860'. Establish injection rate into squeeze holes. RIH with a 4-1/2" CR and set at 3810'. Mix 51 sx Class B cement. Squeeze 39 sx outside the casing, leaving 12 sx inside the casing to cover the Mesaverde formation top. POOH.

9. Plug 5 - Chacra Formation Top, 3094' - 3194', 51 Sacks Class B Cement

RIH and perforate 3 squeeze holes at 3194'. Establish injection rate into squeeze holes. RIH with a 4-1/2" CR and set at 3144'. Mix 51 sx Class B cement. Squeeze 39 sx outside the casing, leaving 12 sx inside the casing to cover the Chacra formation top. PUH.

See COA

10. Plug 6 - Pictured Cliffs and Fruitland Coal Formation Tops, 1982' - 2294', 28 Sacks Class B Cement

TIH. Mix 28 sx Class B cement and spot a balanced plug inside the casing to cover the Pictured Cliffs and Fruitland Coal formation tops. PUH.

11. Plug 7 - Kirtland and Ojo Alamo Formation Tops, 1273' - 1500', 22 Sacks Class B Cement

Mix 22 sx Class B cement and spot a balanced plug inside the casing to cover the Kirtland and Ojo formation tops. PUH.

12. Plug 8 - Surface Plug, 0' - 394', 165 Sacks Class B Cement

RU WL and perforate 4 big hole charge (if available) squeeze holes at 394'. TOOH and RD wireline. Observe well for 30 minutes per BLM regulations. RU pump, close blind rams and establish circulation out bradenhead with water. Circulate BH clean. TIH with 4-1/2" CR and set at 344'. Mix 135 sx Class B cement and squeeze until good cement returns to surface out BH valve. Shut BH valve and squeeze to max 200 psi. Sting out of CR and reverse circulate cement out of tubing. TOOH and LD stinger. TIH with open ended tubing to 344'. Mix 30 sx Class B cement and pump inside plug. TOOH and LD Tubing. SI well and WOC.

13. Nipple down BOP and cut off casing below the casing flange. Install P&A marker with cement to comply with regulations. Rig down, move off location, cut off anchors, and restore location.



Well Name: HUERFANITO UNIT #96

Current Schematic

| | | | | | |
|-----------------------------------|---|---|--|--|-------------------------------------|
| API: UWI 3004512051 | Surface Legal Location 022-027N-009W-A | Field Name SABIN DAKOTA (PRODUCED GAS) | License No. | State Province NEW MEXICO | Well Configuration Type VERTICAL |
| Ground Elevation (ft) 6,292.00 | Original KB/RT Elevation (ft) 6,302.00 | KB-Ground Distance (ft) 10.00 | KB-Casing Flange Distance (ft) 6,302.00 | KB-Tubing Hanger Distance (ft) 6,302.00 | |

VERTICAL - Original Hole, 3/17/2015 1:27:42 PM

| Vertical schematic (actual) | MD (ftKB) | Formation Tops |
|-----------------------------|-----------|----------------|
| | 9.6 | |
| | 10.2 | |
| | 10.8 | |
| | 343.5 | |
| | 344.2 | |
| | 345.1 | |
| | 1,140.1 | |
| | 1,323.2 | OJO-ALAMO |
| | 1,450.1 | KIRTLAND |
| | 1,630.1 | FRUITLAND |
| | 2,032.2 | FRUITLAND |
| | 2,244.1 | PICTURED |
| | 2,327.1 | LEWIS |
| | 2,393.4 | |
| | 2,395.0 | |
| | 3,144.0 | CHACRA |
| | 3,610.0 | CLIFFHOUSE |
| | 3,630.1 | |
| | 3,871.1 | MENEFEE |
| | 4,529.9 | POINT-LOO |
| | 4,815.3 | |
| | 4,816.9 | |
| | 4,883.9 | MANCOS |
| | 5,165.0 | |
| | 5,730.0 | GALLUP |
| | 6,495.4 | |
| | 6,498.4 | |
| | 6,529.9 | |
| | 6,530.2 | |
| | 6,544.0 | GREENHORN |
| | 6,575.1 | |
| | 6,578.1 | |
| | 6,591.9 | GRANEROS |
| | 6,629.9 | TWO WELLS |
| | 6,695.9 | PAGUATE |
| | 6,753.9 | CUBERO |
| | 6,801.8 | |
| | 6,815.9 | ENCINAL-C |
| | 6,868.1 | |
| | 6,912.4 | |
| | 6,913.1 | |

1; Surface: 9 5/8 in; 9,001 in; 10.0 ftKB: 344.0 ftKB

Tubing Hanger; 7 1/16 in; 10.0 ftKB: 10.7 ftKB

Surface Casing Cement; 10.0-344.0; 11/16/1965; Cemented w/ 300 sx Class A cmt. Cement circ to surface.

Production Casing Cement; 1,140.0-2,395.0; 11/28/1965; Cemented Stage 3 w/ 400 cu ft 2:1 poz "S" Class C cmt. TOC @ 350' per TS 11/29/65. UPDATED: TOC @ ~1140 per CBL on 3/10/2015. Note: Stringers and ratty cement from 1140' to 350'.

Tubing; 2 3/8 in; 4.70 lb/ft; J-55; 10.7 ftKB: 6,496.4 ftKB

Production Casing Cement; 3,830.0-4,817.0; 11/28/1965; Cemented 2nd Stage w/ 350 cu ft poz "S" Class C cmt. TOC @ 3664' per 75% calc eff. UPDATED: TOC @ 3830' per CBL on 3/10/2015. Note: Stringer/Ratty Cement from 3700' to 3350'.

Tubing Pup Joint; 2 3/8 in; 4.70 lb/ft; J-55; 6,496.4 ftKB: 6,498.5 ftKB

Tubing; 2 3/8 in; 4.70 lb/ft; J-55; 6,498.5 ftKB: 6,529.7 ftKB

Saw Tooth; 2 3/8 in; 6,529.7 ftKB: 6,530.1 ftKB

Bridge Plug - Permanent; 6,575.0-6,578.0; SET CAST IRON BRIDGE PLUG @ 6575'

PERF - DAKOTA; 6,630.0-6,802.0; 11/30/1965

Auto cement plug; 6,868.0-6,913.0; 11/28/1965; Automatically created cement plug from the casing cement because it had a tagged depth.

Production Casing Cement; 5,165.0-6,913.0; 11/28/1965; Cemented 1st Stage w/ 450 cu ft 1:1 poz "S" Class A cmt. TOC @ 5431' per 75% calc eff. - UPDATED: TOC @ 5165 per CBL on 3/10/2015

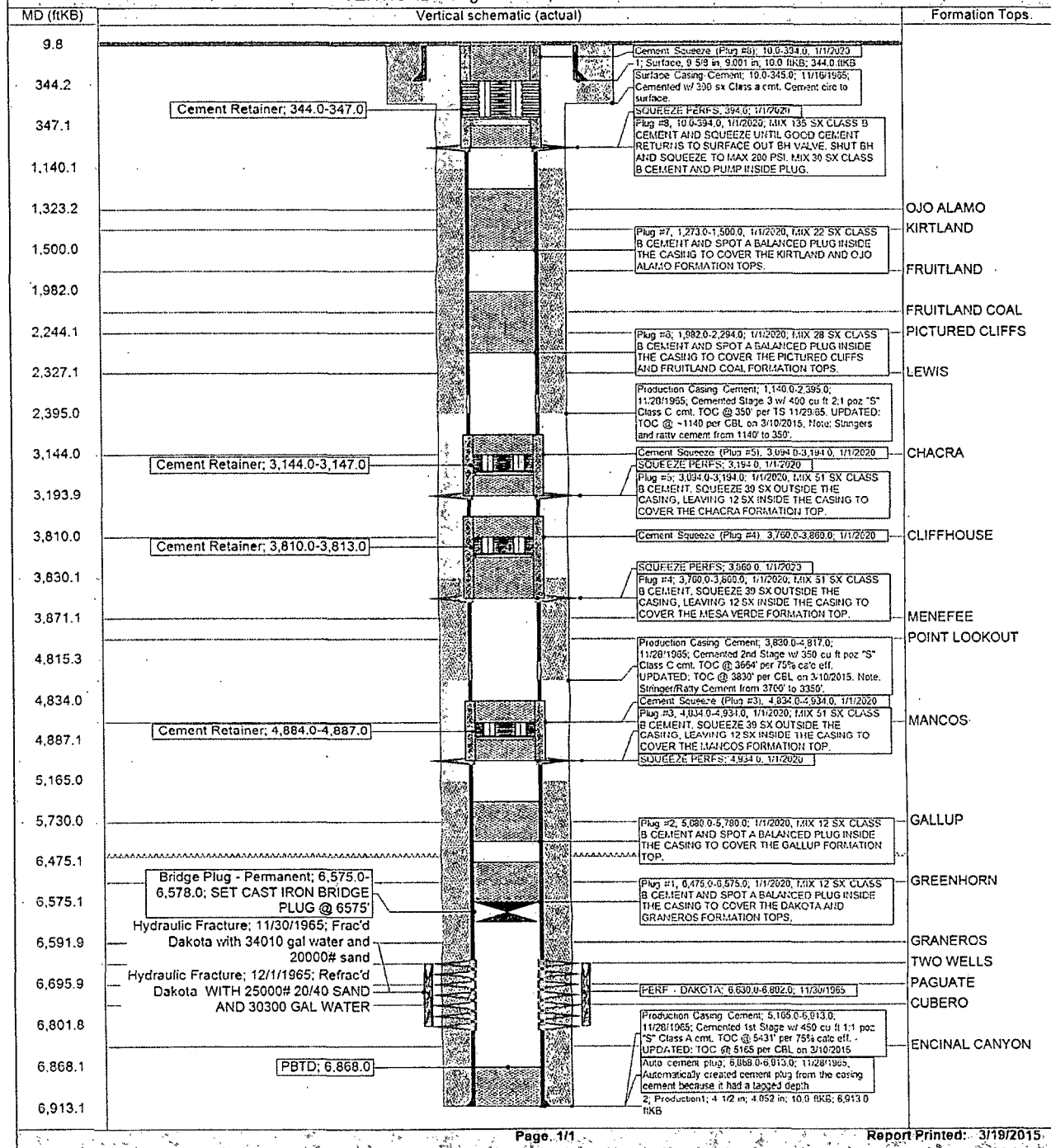
PSTD: 6,868.0

2; Production1; 4 1/2 in; 4,052 in; 10.0 ftKB: 6,913.0 ftKB

Proposed Schematic HUERFANITO UNIT #96

| | | | | |
|----------------------------------|---|-----------------------------------|----------------------------|-------------------------------------|
| District SOUTH | Field Name BASIN DAKOTA (PRORATED GAS) | API / UWI 3004512051 | County SAN JUAN | State/Province NEW MEXICO |
| Original Spud Date 11/15/1965 | Surface Legal Location 022-027N-009W-A | East/West Distance (ft) 820.00 | East/West Reference FEL | North/South Distance (ft) 990.00 |
| North/South Reference FNL | | | | |

VERTICAL - Original Hole, 1/1/2020 4:30:00 PM



UNITED STATES DEPARTMENT OF THE INTERIOR
BUREAU OF LAND MANAGEMENT
FARMINGTON DISTRICT OFFICE
6251 COLLEGE BLVD.
FARMINGTON, NEW MEXICO 87402

Attachment to notice of
Intention to Abandon:

Re: Permanent Abandonment
Well: Huerfanito Unit #96

CONDITIONS OF APPROVAL

1. Plugging operations authorized are subject to the attached "General Requirements for Permanent Abandonment of Wells on Federal and Indian Leases."
2. Farmington Office is to be notified at least 24 hours before the plugging operations commence (505) 564-7750.
3. The following modifications to your plugging program are to be made:
 - a) Bring the top of plug #6 to 1950 ft. to cover the Pictured Cliffs and Fruitland tops. Adjust cement volume accordingly.

Operator ran CBL 3/10/2015. Log is on file and will be used for plugging proposes.

You are also required to place cement excesses per 4.2 and 4.4 of the attached General Requirements.

Office Hours: 7:45 a.m. to 4:30 p.m.