

CHACO 2308-08A #285H

Nageezi Gallup / Basin Mancos_(page 1)

Spud: 3/10/15

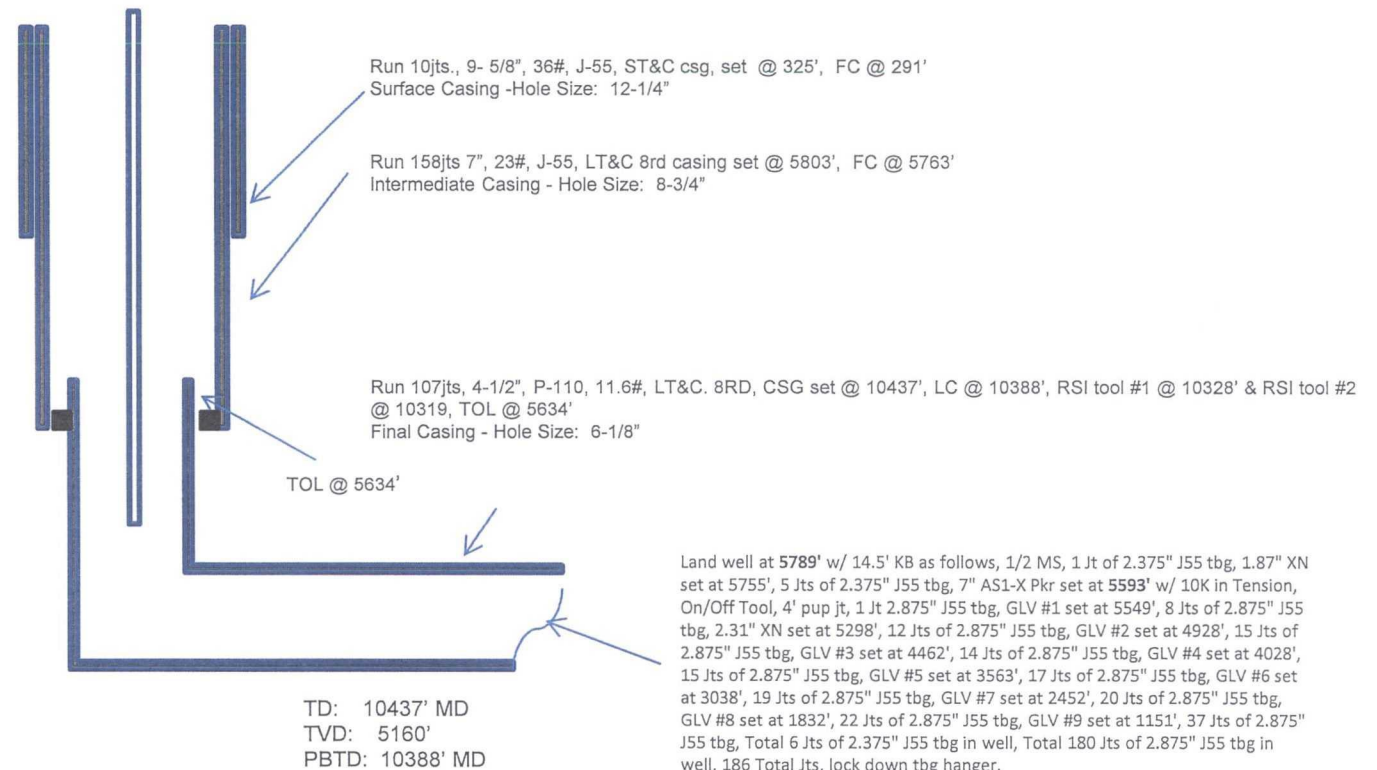
Completed: 5/4/15

SHL: 328' FNL & 334' FEL
NE/4 NE/4 Section 8 (A), T23N, R8W

BHL: 377' FSL & 230' FWL
SW/4 SW/4 Section 5 (M), T23N, R 8W

SAN JUAN NM
Elevation: 6846
API: 30-045-35643

Tops	MD	TVD
Ojo Alamo:	1005	1003
Kirtland:	1182	1177
Picture Cliffs:	1584	1567
Lewis:	1708	1686
Chacra:	1980	1947
Cliff House:	3124	3040
Menefee:	3181	3094
Point Lookout:	4112	3989
Mancos:	4229	4104
Gallup;	4655	4529



CONFIDENTIAL

HOLE SIZE	CASING	CEMENT	VOLUME	CMT TOP
12-1/4"	9-5/8"	101 sx	162 cu.ft.	Surface
8-3/4"	7"	1114 sx	1587 cu. ft.	Surface
6-1/8"	4-1/2"	374 sx	505 cu. ft.	TOC 112'

OIL CONS. DIV DIST. 3

MAY 11 2015

Lg 5/6/15

FV

CHACO 2308-08A #285H
Nageezi Gallup / Basin Mancos (page 1)
(page 2 – lateral with completion)

Mancos 15th:
5851'-6082'- with
24, 0.40" holes.
Frac Mancos 15th
stage with
277,543#, 20/40
PSA Sand

Mancos 13th:
6513'-6744'- with
24, 0.40" holes.
Frac Mancos 13th
stage with
263,814#, 20/40
PSA Sand

Mancos 11th:
7145'-7361'- with 24,
0.40" holes. Frac
Gallup 11th stage with
253,079#, 20/40 PSA
Sand

Gallup 8th:
8063'-8249'- with 24,
0.40" holes. Frac Gallup
8th stage with 213,097#,
20/40 PSA Sand

Gallup 6th:
8635'-8821'-
with 24, 0.40"
holes. Frac
Gallup 6th stage
with 225,770# ,
20/40 PSA
Sand

Gallup 4th:
9207'-9408'-
with 24, 0.40"
holes. Frac
Gallup 4th stage
with 220,452#,
20/40 PSA
Sand

Gallup 1st:
10140'-10265' +
RSI TOOL #1
@ 10319' &
10328' with
211,535# 20/40
PSA Sand

Mancos 14th:
6182'-6413'-
with 24, 0.40"
holes. Frac
Mancos 14th
stage with
268,235#, 20/40
PSA Sand

Mancos 12th:
6844'-7045'- with
24, 0.40" holes.
Frac Mancos 12th
stage with 264,824#
20/40 PSA Sand

Mancos 9th:
7777'-7963'- with
24, 0.40" holes.
Frac Mancos 9th
stage with
218,301#, 20/40
PSA Sand

Gallup 7th:
8349'-8535'-
with 24, 0.40"
holes. Frac
Gallup 7th
stage with
223,022# ,
20/40 PSA
Sand

Gallup 5th:
8921'-9107'-with
24, 0.40" holes.
Frac Gallup 5th
stage with
224,913#, 20/40
PSA Sand

Gallup 3rd :
9508'-9754'- with
24, 0.40" holes.
Frac Gallup 3rd
stage with
222,660#, 20/40
PSA Sand

Gallup 2nd:
9854'-10040'-
with 24 total,
0.40" holes.
Frac Gallup
2nd stage with
215,542#,
20/40 PSA
Sand

CONFIDENTIAL

Mancos 10th:
7461'-7677'-
with 24, 0.40"
holes. Frac
Mancos 10th
stage with
214,115#,
20/40 PSA
Sand



See page 1 for upper portion of hole