


UNITED STATES
DEPARTMENT OF THE INTERIOR
BUREAU OF LAND MANAGEMENT

APPLICATION FOR PERMIT TO DRILL, DEEPEN, OR PLUG BACK

1a. Type of Work DRILL	2005 AUG 10 PM 3 13 RECEIVED 070 FARMINGTON NM	5. Lease Number NMNM-2996 Unit Reporting Number	
1b. Type of Well GAS		6. If Indian, All. or Tribe	
2. Operator BURLINGTON RESOURCES Oil & Gas Company LP		7. Unit Agreement Name	
3. Address & Phone No. of Operator PO Box 4289, Farmington, NM 87499 (505) 326-9700		8. Farm or Lease Name Burnt Mesa 9. Well Number #1B	
4. Location of Well 900' FSL, 1005' FWL Latitude 36° 56.7952'N, Longitude 107° 31.3980'W		10. Field, Pool, Wildcat Blanco Mesaverde/Basin Dakota 11. Sec., Twn, Rge, Mer. (NMMP) UL M, Sec. 25, T32N, R7W API # 30-045- 33275	
14. Distance in Miles from Nearest Town 18.5 Miles Ignacio, CO		12. County San Juan	13. State NM
15. Distance from Proposed Location to Nearest Property or Lease Line 900'			
16. Acres in Lease		17. Acres Assigned to Well DK 320 S/2 MV 320 S/2	
18. Distance from Proposed Location to Nearest Well, Drig, Compl, or Applied for on this Lease 30'			
19. Proposed Depth 8268'		20. Rotary or Cable Tools Rotary	
21. Elevations (DF, FT, GR, Etc.) 6648' GR; 6660' KB		22. Approx. Date Work will Start	
23. Proposed Casing and Cementing Program See Operations Plan attached			
24. Authorized by: <u>Amanda Sandval</u> Regulatory Associate II		<u>7/14/05</u> Date	

PERMIT NO. _____

APPROVAL DATE _____

APPROVED BY Jim Lohs

TITLE Acting Field Manager

Minerals DATE 11/7/05

Archaeological Report attached

Threatened and Endangered Species Report attached

NOTE: This format is issued in lieu of U.S. BLM Form 3160-3

Title 18 U.S.C. Section 1001, makes it a crime for any person knowingly and willfully to make to any department or agency of the United States any false, fictitious or fraudulent statements or presentations as to any matter within its jurisdiction.

NMOCD

DISTRICT I
225 N. French Dr., Hobbs, N.M. 88240

DISTRICT II
811 South First, Artesia, N.M. 88210

DISTRICT III
1000 Rio Brazos Rd., Aztec, N.M. 87410

DISTRICT IV
2040 South Pacheco, Santa Fe, NM 87505

State of New Mexico
Energy, Minerals & Natural Resources Department

Form C-102
Revised August 15, 2000

OIL CONSERVATION DIVISION

2040 South Pacheco
Santa Fe, NM 87505

Submit to Appropriate District Office
State Lease - 4 Copies
Fee Lease - 3 Copies

☒ AMENDED REPORT

2005 AUG 10 PM 3 13

WELL LOCATION AND ACREAGE DEDICATION PLAT

*API Number 30-045- 33275	*Pool Code 72319/71599	*Well Name Blanco Mesaverde Basin, NM
*Property Code 18486	*Property Name BURNT MESA	*Well Number 1B
*OGRD No. 14538	*Operator Name BURLINGTON RESOURCES OIL AND GAS COMPANY LP	*Elevation 6648'

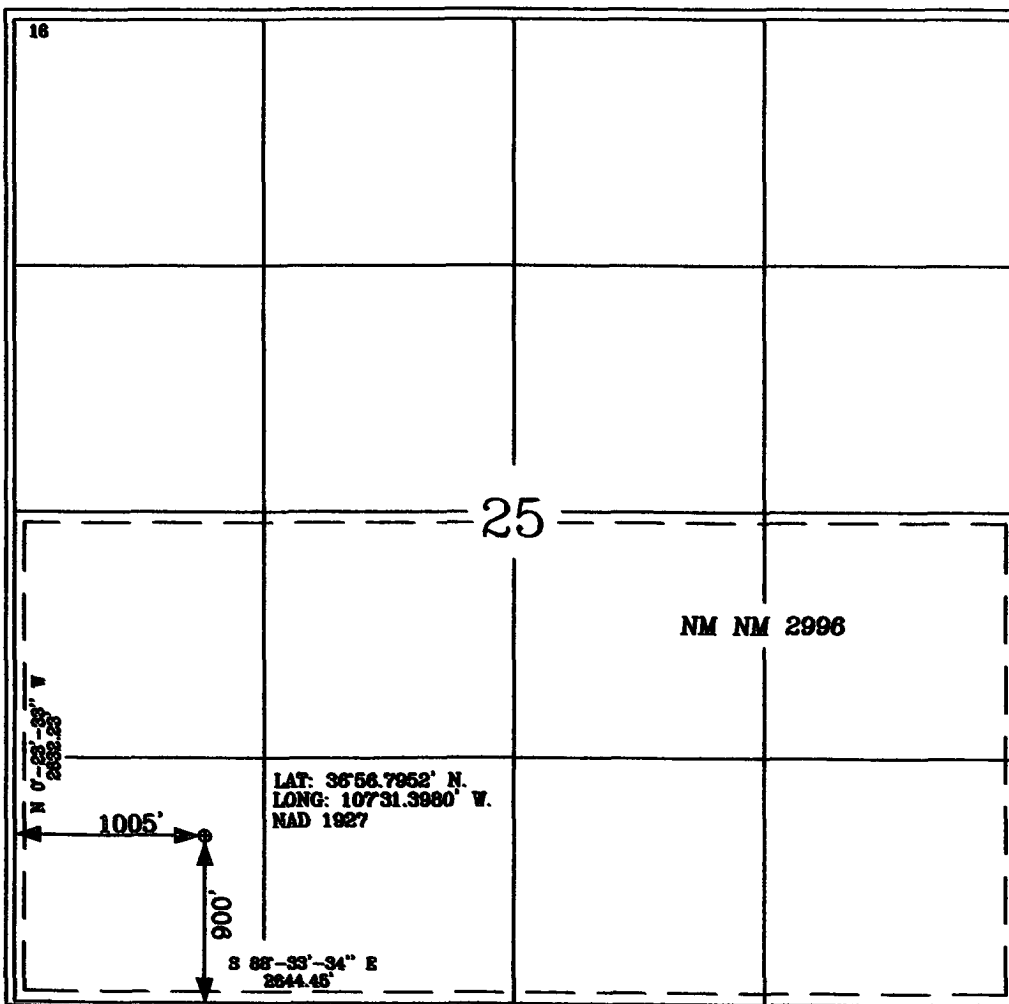
¹⁰ Surface Location

UL or lot no.	Section	Township	Range	Lot Idn	Feet from the	North/South line	Feet from the	East/West line	County
M	25	32-N	7-W		900'	SOUTH	1005'	WEST	SAN JUAN

¹¹ Bottom Hole Location If Different From Surface

UL or lot no.	Section	Township	Range	Lot Idn	Feet from the	North/South line	Feet from the	East/West line	County
*Dedicated Acres S/2 320 acres MV/DK			*Joint or Infill		*Consolidation Code		*Order No.		

NO ALLOWABLE WILL BE ASSIGNED TO THIS COMPLETION UNTIL ALL INTERESTS HAVE BEEN CONSOLIDATED
OR A NON-STANDARD UNIT HAS BEEN APPROVED BY THE DIVISION



17 OPERATOR CERTIFICATION

I hereby certify that the information contained herein is true and complete to the best of my knowledge and belief

Joni Clark
Signature
Joni Clark
Printed Name
Senior Regulatory Specialist
Title
7-7-05
Date

18 SURVEYOR CERTIFICATION

I hereby certify that the well location shown on this plat was plotted from field notes of actual surveys made by me or under my supervision, and that the same is true and correct to the best of my belief.

Date of Survey 6-22-05
Signature and Seal of Professional Surveyor:
Calvin A. Russell
Certificate Number 15703

Office

Energy, Minerals and Natural Resources

May 27, 2004

District I

1625 N. French Dr., Hobbs, NM 88240

District II

1301 W. Grand Ave., Artesia, NM 88210

District III

1000 Rio Brazos Rd., Aztec, NM 87410

District IV

1220 S. St. Francis Dr., Santa Fe, NM 87505

OIL CONSERVATION DIVISION

1220 South St. Francis Dr.

Santa Fe, NM 87505

WELL API NO.

30-045-

33275

5. Indicate Type of Lease

STATE ☐FEE ☐

6. State Oil & Gas Lease No.

Federal Lease NM-2996

7. Lease Name or Unit Agreement Name

Burnt Mesa

8. Well Number

#1 B

9. OGRID Number

14538

10. Pool name or Wildcat

Blanco MV/ Basin DK

SUNDRY NOTICES AND REPORTS ON WELLS

(DO NOT USE THIS FORM FOR PROPOSALS TO DRILL OR TO DEEPEN OR PLUG BACK TO A DIFFERENT RESERVOIR. USE "APPLICATION FOR PERMIT" (FORM C-101) FOR SUCH PROPOSALS.)

1. Type of Well:

Oil Well ☐Gas Well ☒

Other

2. Name of Operator

BURLINGTON RESOURCES OIL & GAS COMPANY LP

3. Address of Operator

3401 E. 30TH STREET, FARMINGTON, NM 87402

4. Well Location

Unit Letter M: 900

feet from the

South

line and

1005

feet from the

West

line

Section 25Township 32NRange 7W

NMPM

County

San Juan

11. Elevation (Show whether DR, RKB, RT, GR, etc.)

6648' GR

Pit or Below-grade Tank Application

☒

or Closure

☐

Pit type

New Drill

Depth to Groundwater

>100'

Distance from nearest fresh water well

>1000'

Distance from nearest surface water

>1000'

Pit Liner Thickness:

NA

mil

Below-Grade Tank:

Volume

bbls;

Construction Material

12. Check Appropriate Box to Indicate Nature of Notice, Report or Other Data**NOTICE OF INTENTION TO:**PERFORM REMEDIAL WORK ☐TEMPORARILY ABANDON ☐PULL OR ALTER CASING ☐PLUG AND ABANDON ☐CHANGE PLANS ☐MULTIPLE COMPL ☐

OTHER:

New Drill Pit

☒**SUBSEQUENT REPORT OF:**REMEDIAL WORK ☐COMMENCE DRILLING OPNS. ☐CASING/CEMENT JOB ☐ALTERING CASING ☐P AND A ☐

OTHER:

☐

13. Describe proposed or completed operations. (Clearly state all pertinent details, and give pertinent dates, including estimated date of starting any proposed work). SEE RULE 1103. For Multiple Completions: Attach wellbore diagram of proposed completion or recompletion.

New Drill, Unlined:

Burlington Resources proposes to construct a new drilling pit and an associated vent/flare pit. Based on Burlington's interpretation of the Ecosphere's risk ranking criteria, the new drilling pit and vent/flare pit will be an unlined pit as detailed in Burlington's Revised Drilling / Workover Pit Construction / Operation Procedures dated November 11, 2004 on file at the NMOCD office. A portion of the vent/flare pit will be designed to manage fluids, and that portion will be unlined, as per the risk ranking criteria. Burlington Resources anticipates closing these pits according to the Drilling / Workover Pit Closure Procedure dated August 2, 2004 on file at the NMOCD office.

I hereby certify that the information above is true and complete to the best of my knowledge and belief. I further certify that any pit or below-grade tank has been/will be constructed or closed according to NMOCD guidelines ☐, a general permit ☒ or an (attached) alternative OCD-approved plan ☐.

SIGNATURE

TITLE

Regulatory Associate II

DATE

7/14/2005

Type or print name

Philana Thompson

E-mail address:

PThompson@br-inc.com

Telephone No.

505-326-9530

For State Use Only

APPROVED BY

TITLE

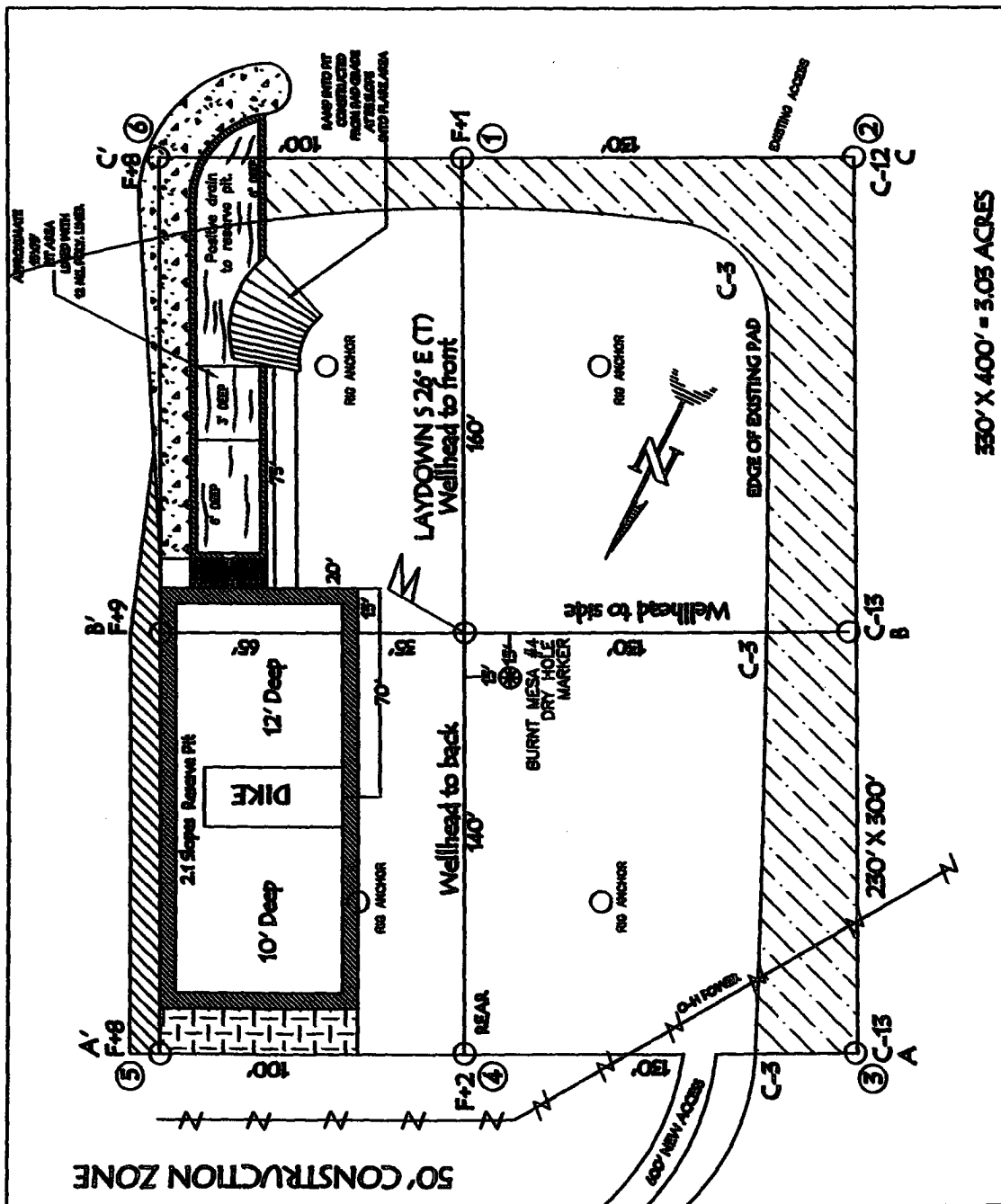
DEPUTY OIL & GAS INSPECTOR, DIST. 1

DATE

NOV 14 2005

Conditions of Approval (if any):

BURLINGTON RESOURCES OIL & GAS COMPANY LP BURNT MESA 1B, 900' FSL & 1005' FWL SECTION 25, T-32-N, R-7-W, NMPM, SAN JUAN COUNTY, NM GROUND ELEVATION: 6648', DATE: JUNE 9, 2005

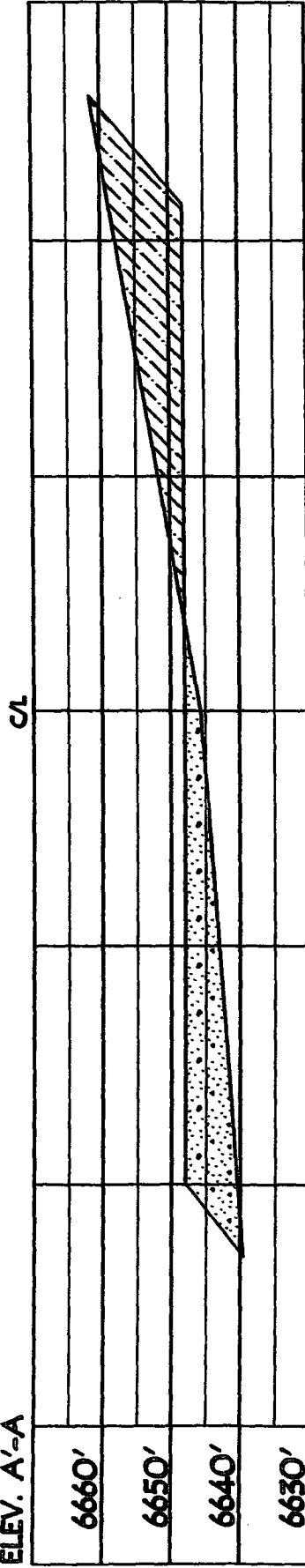


NOTE: VECTOR SURVEYS IS NOT LIABLE FOR UNDERGROUND UTILITIES OR PIPELINES.
 CONTRACTOR SHOULD CALL ONE-CALL FOR LOCATION OF ANY MARKED OR UNMARKED BURIED
 PIPELINES OR CABLES ON WELL PAD AND OR ACCESS ROAD AT LEAST TWO (2) WORKING DAYS PRIOR TO CONSTRUCTION.

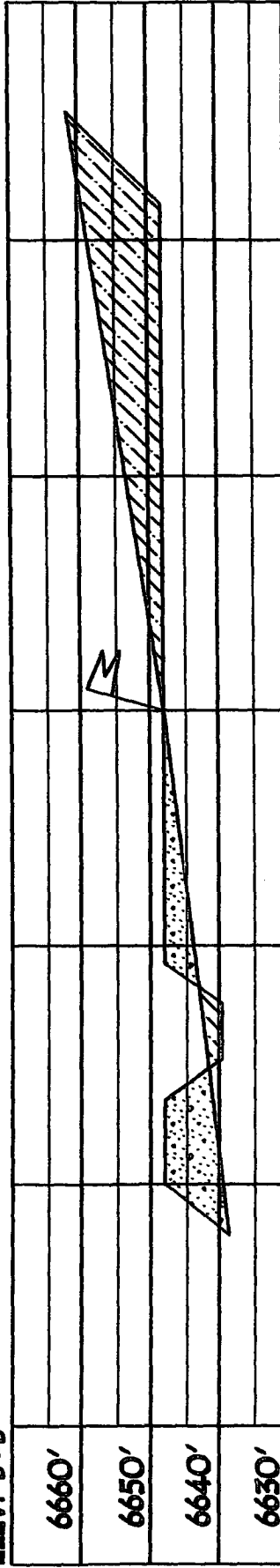
RESERVE PIT DIKE, TO BE 8' ABOVE DEEP SIDE (OVERFLOW - 3' WIDE AND 7' ABOVE SHALLOW SIDE).

BURLINGTON RESOURCES OIL & GAS COMPANY LP
 BURNT MESA 1B, 900' FSL & 1005' FWL
 SECTION 25, T-32-N, R-7-W, NMPM, SAN JUAN COUNTY, NM
 GROUND ELEVATION: 6648', DATE: JUNE 8, 2005

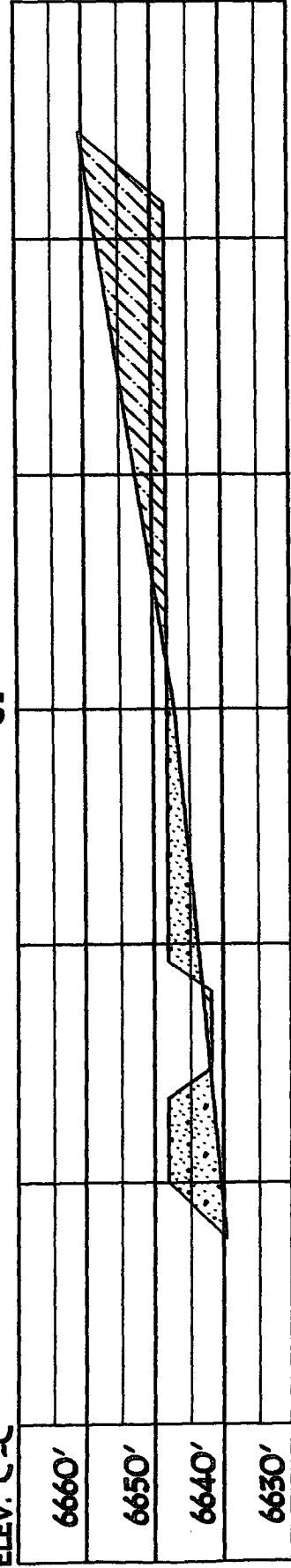
ELEV. A'-A



ELEV. B'-B



ELEV. C'-C



NOTE: VECTOR SURVEYS IS NOT LIABLE FOR UNDERGROUND UTILITIES OR PIPELINES.
 CONTRACTOR SHOULD CALL ONE-CALL FOR LOCATION OF ANY MARKED OR UNMARKED BURIED
 PIPELINES OR CABLES ON WELL PAD AND OR ACCESS ROAD AT LEAST TWO (2) WORKING DAYS PRIOR TO CONSTRUCTION.

OPERATIONS PLAN

Well Name: Burnt Mesa #1B
Location: 900' FSL, 1005' FWL, Unit M (SWSW), Section 25, T-32-N, R-7-W
San Juan County, New Mexico
Latitude 36° 56.7952'N, Longitude 107° 31.3980'W
Formation: Blanco Mesa Verde/Basin Dakota
Elevation: 6648' GL

<u>Formation Tops:</u>	<u>Top</u>	<u>Bottom</u>	<u>Contents</u>
Surface	San Jose	2467'	
Ojo Alamo	2467'	4193'	aquifer
Kirtland	2585'	4075'	gas
Fruitland	3317'	3343'	
Pictured Cliffs	3575'	3085'	gas
Lewis	3765'	2895'	gas
Huerfanito Bentonite	4418'	2242'	gas
Chacra	4847'	1813'	gas
Cliff House	5637'	1023'	
Menefee	5689'	971'	gas
Point Lookout	5892'	768'	gas
Mancos	6325'	335'	gas
Gallup	7248'	-588'	gas
Greenhorn	7980'	-1320'	gas
Graneros	8026'	-1366'	gas
Paguate	8143'	-1483'	gas
Upper Cubero	8152'	-1492'	gas
Lower Cubero	8196'	-1536'	gas
Oak Canyon	8258'	-1598'	gas
Encinal	8264'	-1604'	gas
TD	8268'		

Logging Program:

Mud Logs/Coring/DST -
Mud logs - none
Coring - none
DST - none
Open hole - none
Cased hole - Gamma Ray/CBL

Mud Program:

<u>Interval</u>	<u>Type</u>	<u>Weight</u>	<u>Vis.</u>	<u>Fluid Loss</u>
0- 120'	Spud MUD/Air/Air Mist	8.4-9.0	40-50	no control
120- 3865'	LSND	8.4-9.0	30-60	no control
3865'- 8268'	Air/Air Mist/Nitrogen	n/a	n/a	n/a

Casing Program (as listed, the equivalent, or better):

<u>Hole Size</u>	<u>Depth Interval</u>	<u>Csg. Size</u>	<u>Wt.</u>	<u>Grade</u>
12 1/4"	0' - 120'	9 5/8"	32.3#	H-40
8 3/4"	0' - 3865'	7"	20.0#	J-55
6 1/4"	0' - 8268'	4 1/2"	10.5#	J-55

Tubing Program: 0' - 8268' 2 3/8" 4.7# J-55

BOP Specifications, Wellhead and Tests:

Surface to Intermediate TD -

11" 2000 psi minimum double gate BOP stack (Reference Figure #1). After nipple-up prior to drilling out surface casing, rams and casing will be tested to 600 psi for 30 minutes.

Intermediate TD to Total Depth -

11" 2000 psi minimum double gate BOP stack (Reference Figure #1). After nipple-up prior to drilling out intermediate casing, rams and casing will be tested to 1500 psi for 30 minutes.

Surface to Total Depth -

2" nominal, 2000 psi minimum choke manifold (Reference Figure #3).

Completion Operations -

7 1/16" 2000 psi double gate BOP stack (Reference Figure #2). After nipple-up prior to completion, pipe rams, casing and liner top will be tested to 2000 psi for 15 minutes.

Wellhead -

9 5/8" x 7" x 4 1/2" x 2 3/8" x 2000 psi tree assembly.

General -

- Pipe rams will be actuated once each day and blind rams will be actuated once each trip to test proper functioning.
- An upper kelly cock valve with handle available and drill string valves to fit each drill string will be available on the rig floors at all times.
- BOP pit level drill will be conducted weekly for each drill crew.
- All BOP tests & drills will be recorded in daily drilling reports.
- Blind and pipe rams will be equipped with extension hand wheels.

Cementing:

9 5/8" surface casing pre-set drilled- cement with 23 sxs Type III cement with 20% flyash mixed at 14.5 ppg, 1.61 cu ft per sack yield. (Bring cement to surface). Wait on cement for 24 hours for pre-set holes before pressure testing or drilling out from under surface.

9 5/8" surface casing conventionally drilled - cement with 88 sxs Type III cement with 0.25 pps Celloflake, 2% calcium chloride. (200% excess, bring cement to surface). Wait on cement appropriate time until cement achieves 250 psi compressive strength at 60 degrees F. prior to nipple up of BOPE. Wait on cement for 8 hrs for conventionally set holes before pressure testing or drilling out from under surface.

Saw tooth guide shoe on bottom. Bowspring centralizers will be run in accordance with Onshore Order #2.

7" intermediate casing -

Lead with 348 sacks Premium Lite cement with 3% calcium chloride, 0.25 pps Celloflake, 5 pps LCM-1, 0.4% fluid loss, 0.4% sodium metasilicate. Tail w/90 sacks Type III cmt w/1% calcium chloride, 0.25 pps Celloflake, 0.2% fluid loss (865 cu ft- 50% excess to circulate to surface.) WOC minimum of 8 hours before drilling out intermediate casing. If cement does not circulate to surface, a CBL or a temperature survey will be run to determine TOC. Test casing to 1500 psi for 30 minutes.

Cementing: Continued

Cement nose guide shoe on bottom with float collar spaced on top of shoe joint. Bowspring centralizers spaced every other joint off bottom, to the base of the Ojo Alamo @ 2585'. Two turbolating centralizers at the base of the Ojo Alamo 2585'. Bowspring centralizers spaced every fourth joint from the base of the Ojo Alamo to the base of the surface casing.

2nd Stage Plan**4 1/2" Production Liner/Casing -**

Cement to cover minimum of 100' of 4 1/2" x 7" overlap. Cement with 303 sacks Premium Lite HS w/ 0.25 pps Celloflake, 0.3% CD-32, 6.25 pps LCM-1 and 1% FL-52. (599 cf 30% excess to cement 4 1/2" x 7" overlap). WOC a minimum of 18 hrs prior to completing.

Cement float collar stacked on top of float shoe.

Note: If open hole logs are run, cement volumes will be based on 25% excess over caliper volumes.

Cement nose guide shoe on bottom with float collar spaced on top of shoe joint. The liner hanger will have a rubber packoff.

- If hole conditions permit, an adequate water spacer will be pumped ahead of each cement job to prevent cement/ mud contamination or cement hydration.

Special Drilling Operations (Air/Mist Drilling):


The following equipment will be operational while air/mist drilling:

- An anchored blooie line will be utilized to discharge all cuttings and circulating medium to the blow pit a minimum of 100' from the wellhead.
- The blooie line will be equipped with an automatic igniter or pilot light.
- Compressors will be located a minimum of 100' from the wellhead in the opposite direction from the blooie line.
- Engines will have spark arresters or water cooled exhaust.
- The rotating head will be properly lubricated and maintained.
- A float valve will be utilized above the bit.
- Mud circulating equipment, water, and mud materials will be sufficient to maintain control of the well.

Additional Information:

- The Mesa Verde and Dakota formations will be completed and commingled.
- No abnormal temperatures or hazards are anticipated.
- Anticipated pore pressures are as follows:

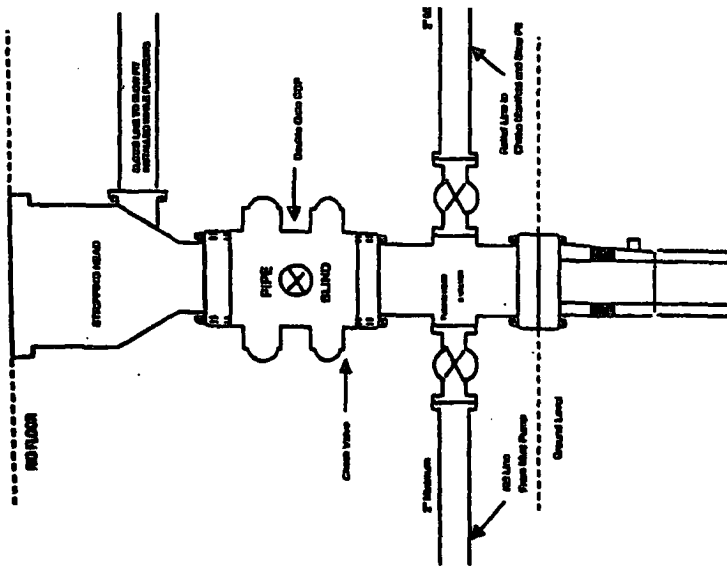
Fruitland Coal	300 psi
Pictured Cliffs	600 psi
Mesa Verde	700 psi
Dakota	2500 psi
- Sufficient LCM will be added to the mud system to maintain well control, if lost circulation is encountered below the top of the Pictured Cliffs.
- The South half of Section 25 is dedicated to the Mesa Verde and Dakota.
- This gas is dedicated.


Drilling Engineer

7/25/05
Date

BURLINGTON RESOURCES

Completion/Workover Rig
BOP Configuration
2,000 psi System

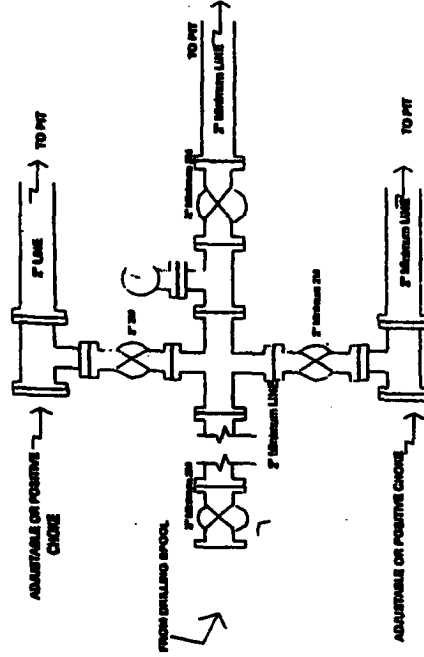


Minimum BOP installation for all Completion/Workover Operations. 7-1/16" bore, 2000 psi minimum working pressure double gate BOP to be equipped with blind and pipe rams. A stripping head to be installed on the top of the BOP. All BOP equipment is 2000 psi working pressure or greater excluding 800 psi stripping head.

Figure #2

BURLINGTON RESOURCES

Drilling Rig
Choke Manifold Configuration
2000 psi System

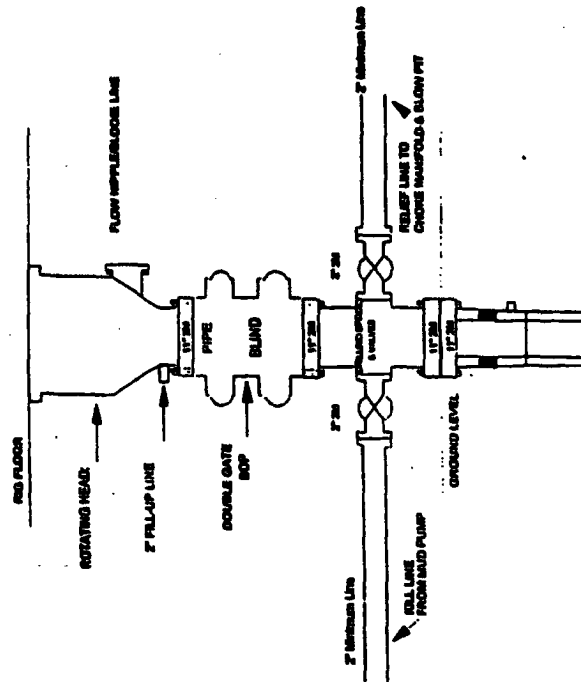


Choke manifold installation from Surface Casing Point to Total Depth. 2,000psi working pressure equipment with two chokes.

Figure #3

Burlington Resources

Drilling Rig
2000 psi System



BOP Installation from Surface Casing Point to Total Depth. 11" Bore 10" Nominal, 2000 psi working pressure double gate BOP to be equipped with blind rams and pipe rams. A 800 psi rotating head on top of ram preventer. All BOP equipment is 2,000 psi working pressure.

Figure #1

4-20-01

4-20-01