

UNITED STATES
DEPARTMENT OF THE INTERIOR
BUREAU OF LAND MANAGEMENT

APPLICATION FOR PERMIT TO DRILL, DEEPEN, OR PLUG BACK

1a. Type of Work DRILL	5. Lease Number NMSF-079492-A Unit Reporting Number NANM 078417B-DK/078412A-MV
1b. Type of Well GAS	6. If Indian, All. or Tribe
2. Operator BURLINGTON RESOURCES Oil & Gas Company LP	7. Unit Agreement Name San Juan 27-5 Unit
3. Address & Phone No. of Operator PO Box 4289, Farmington, NM 87499 (505) 326-9700	8. Farm or Lease Name San Juan 27-5 Unit 9. Well Number 107N
4. Location of Well 1520' FSL, 1910' FEL Latitude 36° 34.2008'N, Longitude 107° 18.3838'W	10. Field, Pool, Wildcat Blanco MV/Basin DK 11. Sec., Twn, Rge, Mer. (NMPM) J Sec 13, T-27-N, R-5-W API # 30-039- 29695
14. Distance in Miles from Nearest Town Gobernador 15 Miles	12. County Rio Arriba 13. State NM
15. Distance from Proposed Location to Nearest Property or Lease Line 1520'	
16. Acres in Lease	17. Acres Assigned to Well 320 S/2, E/2 OK MJ
18. Distance from Proposed Location to Nearest Well, Drig, Compl, or Applied for on this Lease 1400' SJ 27-5 107M MV/DK	
19. Proposed Depth 7853'	20. Rotary or Cable Tools Rotary
21. Elevations (DF, FT, GR, Etc.) 6603' GR	22. Approx. Date Work will Start
23. Proposed Casing and Cementing Program See Operations Plan attached	
24. Authorized by: <u>Frances Bend</u> Regulatory Specialist	<u>6-29-05</u> Date

PERMIT NO.

APPROVED BY

APPROVAL DATE

TITLE

DATE

Archaeological Report Attached

Threatened and Endangered Species Report Attached

NOTE: This format is issued in lieu of U.S. BLM Form 3160-3

Title 18 U.S.C. Section 1001, makes it a crime for any person knowingly and willfully to make to any department or agency of the United States any false, fictitious or fraudulent statements or presentations as to any matter within its jurisdiction.

This action is subject to technical and procedural review pursuant to 43 CFR 3165.3 and appeal pursuant to 43 CFR 3165.4

NMOC

DRILLING OPERATIONS AUTHORIZED ARI
SUBJECT TO COMPLIANCE WITH ATTACH
"GENERAL REQUIREMENTS".

District II
PO Drawer DD, Artesia, NM 88211-0719

OIL CONSERVATION DIVISION
PO Box 2088
Santa Fe, NM 87504-2088

Submit to Appropriate District Office
State Lease - 4 Copies
Fee Lease - 3 Copies

District III
1000 Rio Brazos Rd., Aztec, NM 87410

District IV
PO Box 2088, Santa Fe, NM 87504-2088

2005 NGU 0 871 3 11 ☐ AMENDED REPORT

WELL LOCATION AND ACREAGE DEDICATION PLAT

*API Number 30-039 - 29695		*Pool Code 72319/71599	*Pool Name Blanco Mesaverde/Basin Dakota
*Property Code 7454	*Property Name SAN JUAN 27-5 UNIT		*Well Number 107N
*OGRID No. 14538	*Operator Name BURLINGTON RESOURCES OIL & GAS COMPANY, LP		*Elevation 6603'

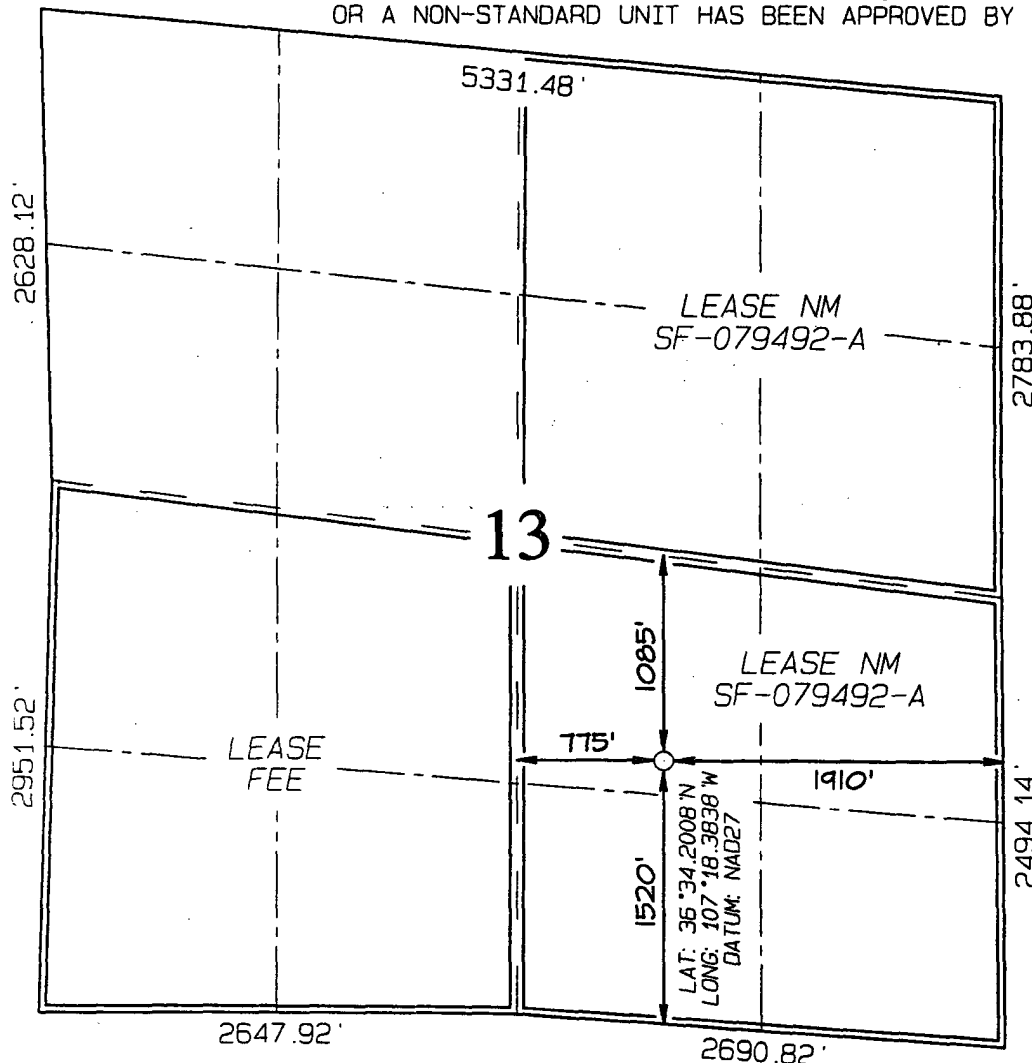
¹⁰ Surface Location

UL or lot no.	Section	Township	Range	Lot Idn	Feet from the	North/South line	Feet from the	East/West line	County
J	13	27N	5W		1520	SOUTH	1910	EAST	RIO ARRIBA

¹¹Bottom Hole Location If Different From Surface

UL or lot no.	Section	Township	Range	Lot Idn	Feet from the	North/South line	Feet from the	East/West line	County
¹² Dedicated Acres DK-320--S/2 MV-320--E/2					¹³ Joint or Infill	¹⁴ Consolidation Code	¹⁵ Order No.		

NO ALLOWABLE WILL BE ASSIGNED TO THIS COMPLETION UNTIL ALL INTERESTS HAVE BEEN CONSOLIDATED OR A NON-STANDARD UNIT HAS BEEN APPROVED BY THE DIVISION



17 OPERATOR CERTIFICATION

I hereby certify that the information contained herein is true and complete to the best of my knowledge and belief

Frances Bond
Signature

Frances Bond

Printed Name _____

Regulatory Specialist

Title

6-29-05

Date _____

¹⁸ SURVEYOR CERTIFICATION

I hereby certify that the well location shown on this plat was plotted from field notes of actual surveys made by me or under my supervision, and that the same is true and correct to the best of my belief.

Date of Survey: APRIL 12, 2005

Signature and Seal of Professional Surveyor



JASON C. EDWARDS
Certificate Number 15269

Submit 3 Copies To Appropriate District
Office

District I

1625 N. French Dr., Hobbs, NM 88240

District II

1301 W. Grand Ave., Artesia, NM 88210

District III

1000 Rio Brazos Rd., Aztec, NM 87410

District IV

1220 S. St. Francis Dr., Santa Fe, NM 87505

State of New Mexico

Energy, Minerals and Natural Resources

Form C-103

May 27, 2004

OIL CONSERVATION DIVISION

1220 South St. Francis Dr.
Santa Fe, NM 87505

WELL API NO.

30-039-89695

5. Indicate Type of Lease

STATE ☐

FEE ☐

6. State Oil & Gas Lease No.

NMSF-079492-A

7. Lease Name or Unit Agreement Name

San Juan 27-5 Unit

8. Well Number

107N

9. OGRID Number

14538

10. Pool name or Wildcat

Blanco Mesaverde/Basin Dakota

SUNDRY NOTICES AND REPORTS ON WELLS
(DO NOT USE THIS FORM FOR PROPOSALS TO DRILL OR TO DEEPEN OR PLUG BACK TO A
DIFFERENT RESERVOIR. USE "APPLICATION FOR PERMIT" (FORM C-101) FOR SUCH
PROPOSALS.)

1. Type of Well:

Oil Well ☐

Gas Well ☒

Other

2. Name of Operator

BURLINGTON RESOURCES OIL & GAS COMPANY LP

3. Address of Operator

3401 E. 30TH STREET, FARMINGTON, NM 87402

4. Well Location

Unit Letter J

: 1520

feet from the

South

line and

1910

feet from the

East

line

Section 13

Township 27N

Range 5W

NMPM

County

Rio Arriba

11. Elevation (Show whether DR, RKB, RT, GR, etc.)

Pit or Below-grade Tank Application

☐ or Closure

Pit type

New Drill

Depth to Groundwater

750' 5100'

Distance from nearest fresh water well

>1000'

Distance from nearest surface water

<200'

Pit Liner Thickness:

12

mil

Below-Grade Tank:

Volume

bbls;

Construction Material

12. Check Appropriate Box to Indicate Nature of Notice, Report or Other Data

NOTICE OF INTENTION TO:

PERFORM REMEDIAL WORK ☐

PLUG AND ABANDON ☐

TEMPORARILY ABANDON ☐

CHANGE PLANS ☐

PULL OR ALTER CASING ☐

MULTIPLE COMPL ☐

OTHER:

New Drill

SUBSEQUENT REPORT OF:

REMEDIAL WORK ☐

ALTERING CASING ☐

COMMENCE DRILLING OPNS. ☐

P AND A ☐

CASING/CEMENT JOB ☐

OTHER: ☐

13. Describe proposed or completed operations. (Clearly state all pertinent details, and give pertinent dates, including estimated date of starting any proposed work). SEE RULE 1103. For Multiple Completions: Attach wellbore diagram of proposed completion or recompletion.

Burlington Resources proposes to construct a new drilling pit and an associated vent/flare pit. Based on Burlington's interpretation of the Ecosphere's risk ranking criteria, the new drilling pit will be a lined pit as detailed in Burlington's Revised Drilling / Workover Pit Construction / Operation Procedures dated November 11, 2004 on file at the NMOCD office. A portion of the vent/flare pit will be designed to manage fluids and that portion will be lined as per the risk ranking criteria. Burlington Resources anticipates closing these pits according to the Drilling / Workover Pit Closure Procedure dated August 2, 2004 on file at the NMOCD office.

I hereby certify that the information above is true and complete to the best of my knowledge and belief. I further certify that any pit or below-grade tank has been/will be constructed or closed according to NMOCD guidelines ☐, a general permit ☒ or an (attached) alternative OCD-approved plan ☐.

SIGNATURE

Frances Bond

TITLE

Regulatory Specialist

DATE

06/29/2005

Type or print name
For State Use Only

Frances Bond

E-mail address:

fbond@br-inc.com

Telephone No.

505-326-9847

APPROVED BY

[Signature]

TITLE

DEPUTY OIL & GAS INSPECTOR, DIST. III

DATE

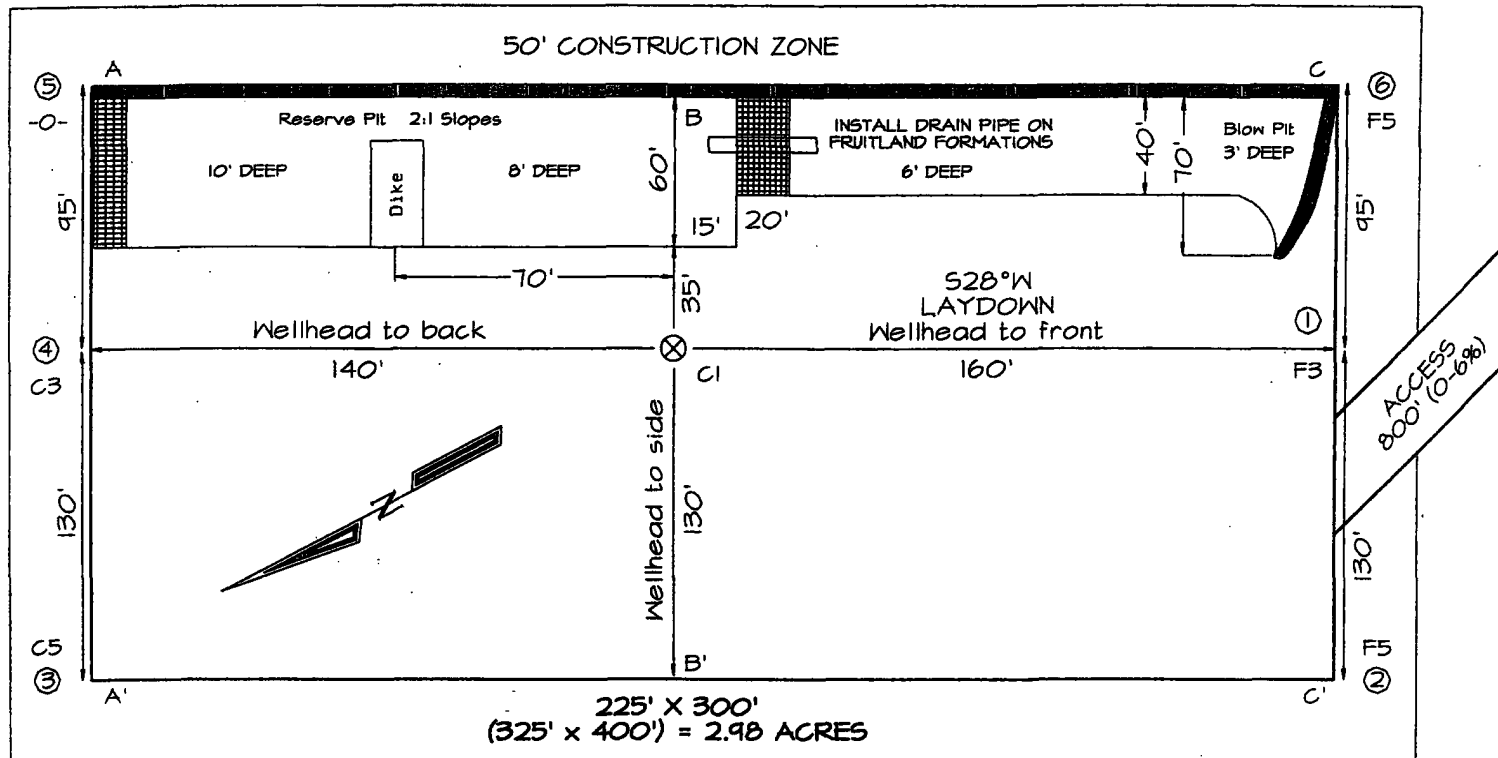
DEC 13 2005

Conditions of Approval (if any):

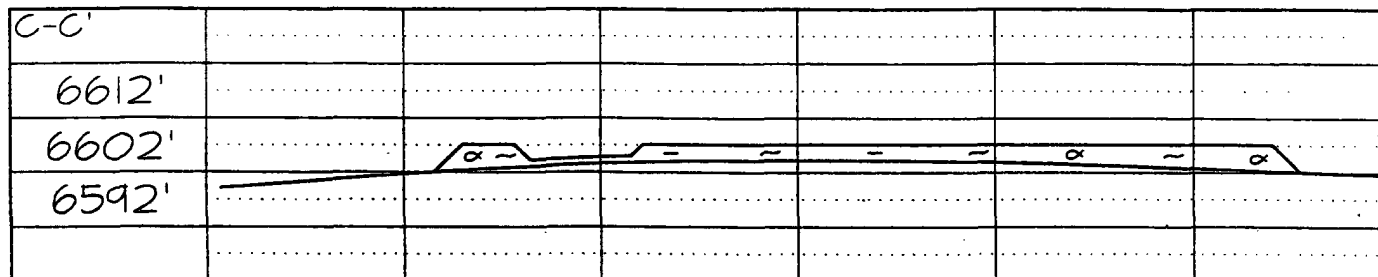
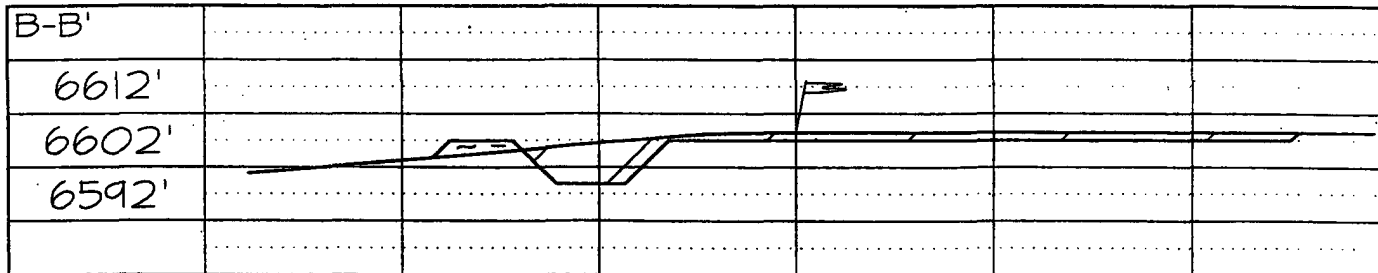
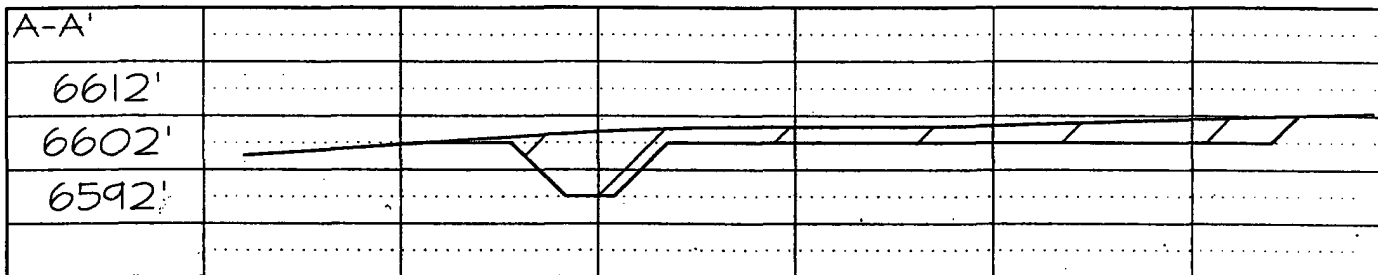
PLAT #1

BURLINGTON RESOURCES OIL & GAS COMPANY, LP
SAN JUAN 27-5 UNIT #107N, 1520' FSL & 1910' FEL
SECTION 13, T27N, R5W, NMPM, RIO ARriba COUNTY, NM
GROUND ELEVATION: 6603' DATE: APRIL 12, 2005

LATITUDE: 36°34'12"
LONGITUDE: 107°18'23"
 DATUM: NAD1927



Reserve Pit Dike: to be 8' above Deep side (overflow - 3' wide and 1' above shallow side).
 Blow Pit: overflow pipe halfway between top and bottom and to extend over plastic liner and into blow pit.



Note: Contractor should call One-Call for location of any marked or unmarked buried pipelines or cables on well pad and/or access road at least two (2) working days prior to construction

OPERATIONS PLAN

Well Name: San Juan 27-5 Unit #107N

Location: 1520' FSL, 1910' FEL, Sec 13, T-27-N, R-5-W
Rio Arriba County, NM

Latitude 36° 34.2008 'N, Longitude 107° 18.3838 'W

Formation: Blanco Mesaverde/Basin Dakota

Total Depth: 7853

Logging Program: See San Juan 27-5 Unit Master Operations Plan

Mud Program: See San Juan 27-5 Unit Master Operations Plan

Casing Program (as listed, the equivalent, or better):

Hole Size	Depth Interval	Csg	Wt.	Grade	Cement	
12 1/4	0' -	120	9.625"	32.3#	H-40	113 cu.ft
8 3/4	0' -	3709	7"	20.0#	J-55	830 cu.ft
6 1/4	0' -	7853	4.5"	10.5#/11.6#	J-55	565

Tubing Program: See San Juan 27-5 Unit Master Operations Plan

- * The Mesaverde formation will be completed.
- * The west half of Section 30 is dedicated to the Mesaverde formation in this well.
- * Gas is dedicated.

[Signature]
Drilling Engineer

6/29/05
Date

C. HARRADEN/ November 10, 2005 *CH*

BURLINGTON RESOURCES/ San Juan 27-5 Unit #107N APD

STIPULATION/CONDITION OF APPROVAL

This well is located within a 'vulnerable area'. In order to protect the integrity of the alluvium aquifer, a minimum surface csg. depth of 200' is stipulated as a condition of approval for this APD.