

**UNITED STATES  
DEPARTMENT OF THE INTERIOR  
BUREAU OF LAND MANAGEMENT**

## Sundry Notices and Reports on Wells

2005 NOV 14 PM 3 33

1. **Type of Well**  
GAS

RECEIVED  
070 FARMINGTON NM

5. **Lease Number**  
SF-079037  
6. **If Indian, All. or  
Tribe Name**

2. **Name of Operator**  
**BURLINGTON**  
RESOURCES OIL & GAS COMPANY LP

7. **Unit Agreement Name**3. **Address & Phone No. of Operator**

PO Box 4289, Farmington, NM 87499 (505) 326-9700

8. **Well Name & Number**

Hale #353S

9. **API Well No.**

30-045-32469

4. **Location of Well, Footage, Sec., T, R, M**  
Sec., T—N, R—W, NMPM

10. **Field and Pool**

Unit I (NESE), 2200' FSL &amp; 1095' FEL, Sec. 34, T31N, R8W NMPM

11. **Basin Fruitland Coal  
County and State**  
San Juan, NM

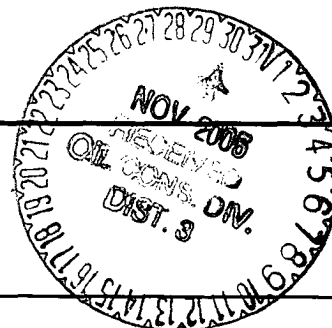
## 12. CHECK APPROPRIATE BOX TO INDICATE NATURE OF NOTICE, REPORT, OTHER DATA

**Type of Submission:**☒ Notice of Intent☐ Subsequent Report☐ Final Abandonment**Type of Action:**☐ Abandonment☐ Recompletion☐ Plugging☐ Casing Repair☐ Altering Casing☒ Change of Plans☐ New Construction☐ Non-Routine Fracturing☐ Water Shut-off☐ Conversion to Injection☒ Other : Change of footages

## 13. Describe Proposed or Completed Operations

11/14/05 This location is a twinned well & needed to be moved 50' FSL & 10' FEL, because of where the twinned well is located the drilling rig was unable to maneuver on to the location. No new disturbance will occur. **Was verbally approved by Jim Lovato w/ the BLM.**

Was: 2150' FSL 1105' FEL TO: 2200' FSL 1095' FEL



## 14. I hereby certify that the foregoing is true and correct.

Signed Philana Thompson Philana Thompson Title Regulatory Associate II Date 11/14/05

(This space for Federal or State Office use)

APPROVED BY \_\_\_\_\_ Title \_\_\_\_\_ Date \_\_\_\_\_

CONDITION OF APPROVAL, if any:

Title 18 U.S.C. Section 1001, makes it a crime for any person knowingly and willfully to make any department or agency of the United States any false, fictitious or fraudulent statements or representations as to any matter within its jurisdiction.

NMOC

DISTRICT I  
1626 N. French Dr., Hobbs, N.M. 88240

DISTRICT II  
811 South First, Artesia, N.M. 88210

DISTRICT III  
1000 Rio Brazos Rd., Aztec, N.M. 87410

DISTRICT IV  
2040 South Pacheco, Santa Fe, NM 87505

State of New Mexico  
Energy, Minerals & Natural Resources Department

Form C-102  
Revised August 15, 2000

Submit to Appropriate District Office  
State Lease - 4 Copies  
Fee Lease - 3 Copies

OIL CONSERVATION DIVISION

2040 South Pacheco  
Santa Fe, NM 87505

NOV 14 PM 3 33

☐ AMENDED REPORT

WELL LOCATION AND ACREAGE DEDICATION PLAT

|                                     |   |  |
|-------------------------------------|---|--|
| <sup>1</sup> API Number<br>30-045-  | <sup>2</sup> Pool Code<br>71629   | <sup>3</sup> Pool Name<br>Basin Fruitland Coal |
| <sup>4</sup> Property Code<br>18534 | <sup>5</sup> Property Name<br>HALE  | <sup>6</sup> Well Number<br>353S               |
| <sup>7</sup> GRID No.<br>14538      | <sup>8</sup> Operator Name<br>BURLINGTON RESOURCES OIL AND GAS COMPANY LP | <sup>9</sup> Elevation<br>6208'                |

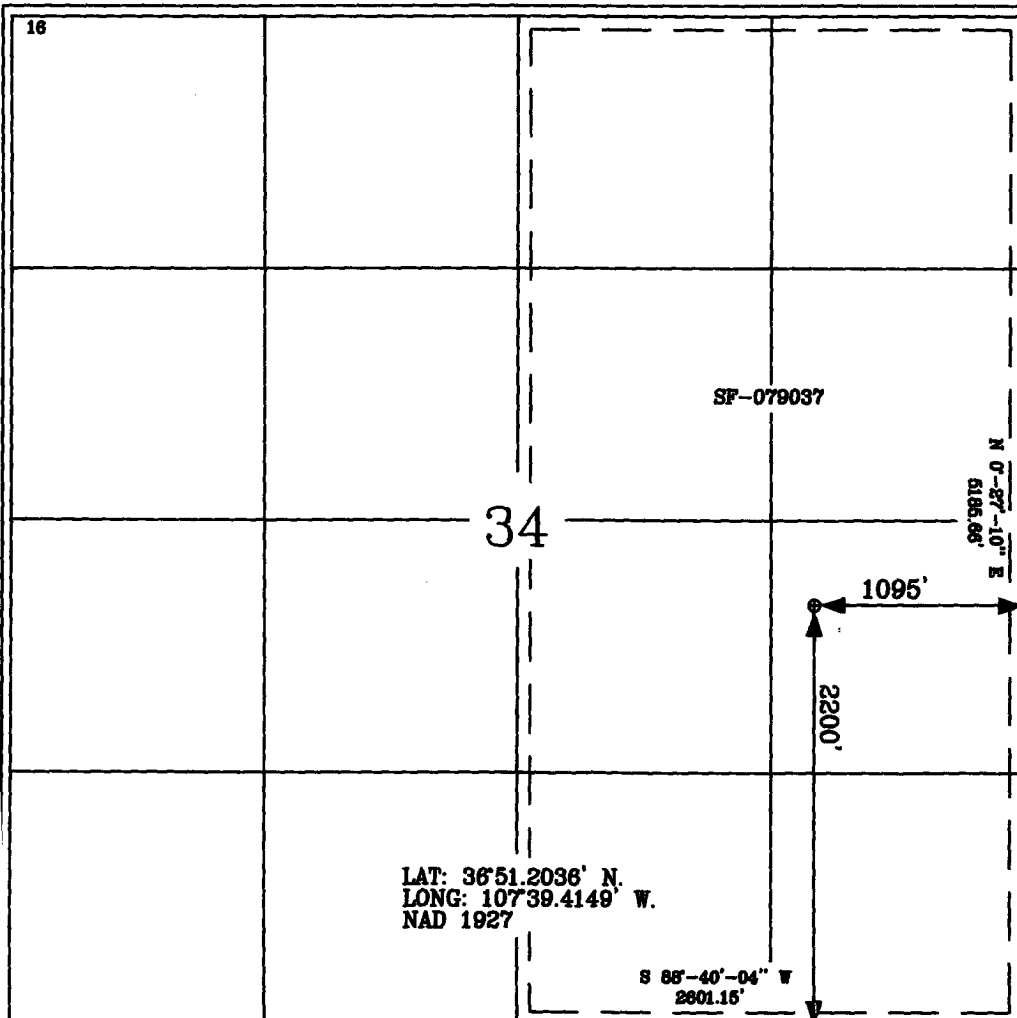
<sup>10</sup> Surface Location

| UL or lot no. | Section | Township | Range | Lot Idn | Feet from the | North/South line | Feet from the | East/West line | County   |
|---------------|---------|----------|-------|---------|---------------|------------------|---------------|----------------|----------|
| I             | 34      | 31-N     | 8-W   |         | 2200'         | SOUTH            | 1095'         | EAST           | SAN JUAN |

<sup>11</sup> Bottom Hole Location If Different From Surface

| UL or lot no.                              | Section | Township | Range                         | Lot Idn | Feet from the                    | North/South line | Feet from the           | East/West line | County |
|--|---------|----------|-------------------------------|---------|----------------------------------|------------------|-------------------------|----------------|--------|
|  |         |          |                               |         |                                  |                  |                         |                |        |
| <sup>12</sup> Dedicated Acres<br>320 E2 FC |         |          | <sup>13</sup> Joint or Infill |         | <sup>14</sup> Consolidation Code |                  | <sup>15</sup> Order No. |                |        |
|  |         |          |                               |         |                                  |                  |                         |                |        |

NO ALLOWABLE WILL BE ASSIGNED TO THIS COMPLETION UNTIL ALL INTERESTS HAVE BEEN CONSOLIDATED  
OR A NON-STANDARD UNIT HAS BEEN APPROVED BY THE DIVISION



17 OPERATOR CERTIFICATION

I hereby certify that the information contained herein  
is true and complete to the best of my knowledge and belief

*Amanda Sandoval*  
Signature

Amanda Sandoval  
Printed Name

Regulatory Assistant II  
Title

11-14-05  
Date

18 SURVEYOR CERTIFICATION

I hereby certify that the well location shown on this plat  
was plotted from field notes of actual surveys made by  
me or under my supervision, and that the same is true  
and correct to the best of my belief.

Date of Survey 11-10-05

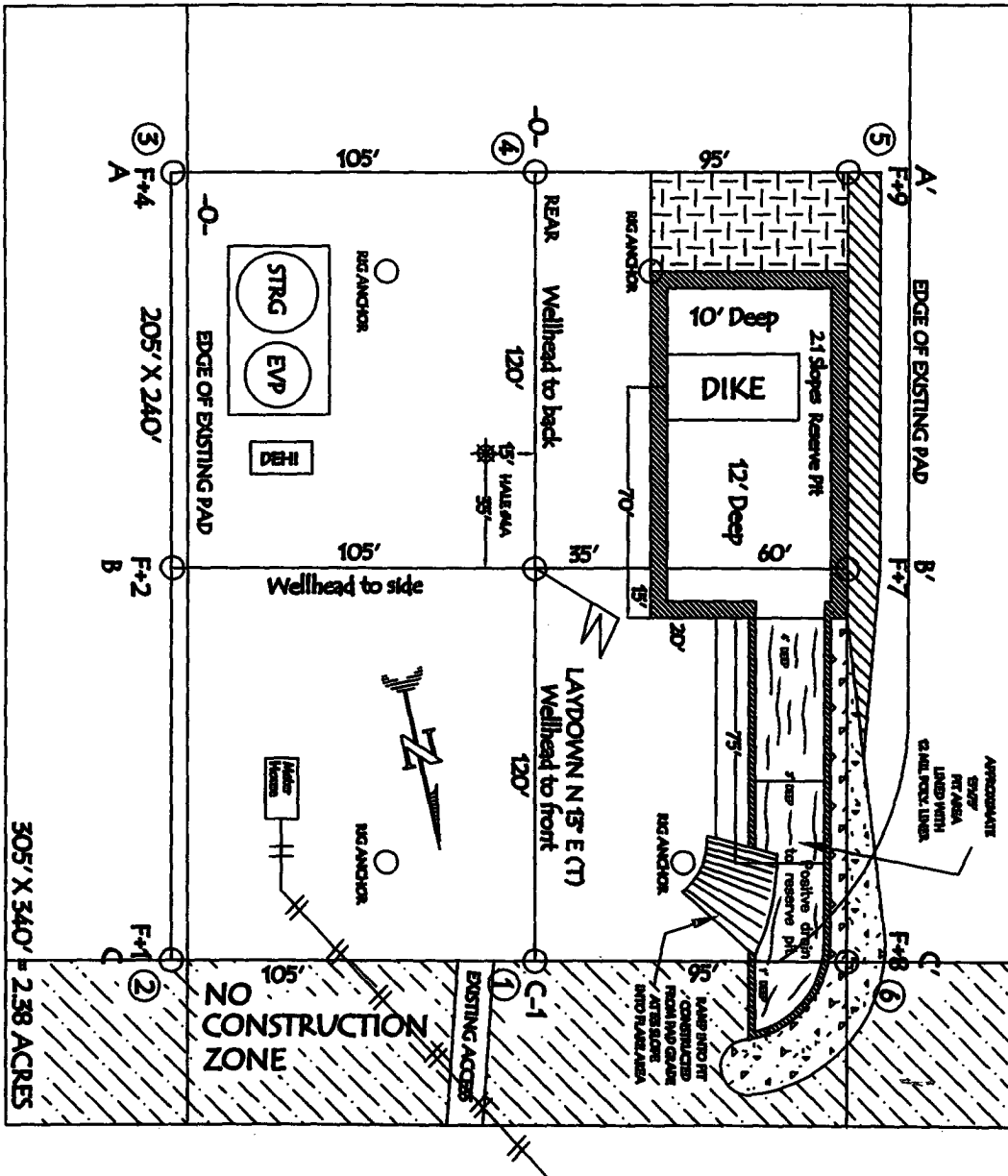
Signature and Seal of Professional Surveyor:



*Glen W. Russell*  
Certificate Number 15703

**BURLINGTON RESOURCES OIL & GAS COMPANY LP**  
**HALE #3535, 2200' FSL & 1095' FEL**  
**SECTION 34, T-31-N, R-8-W, NMPM, SAN JUAN COUNTY, NM**  
**GROUND ELEVATION: 6208', DATE: NOVEMBER 3, 2005**

RESERVE PIT DIKE: TO BE 8' ABOVE DEEP SIDE (OVERFLOW - 3' WIDE AND 1' ABOVE SHALLOW SIDE).

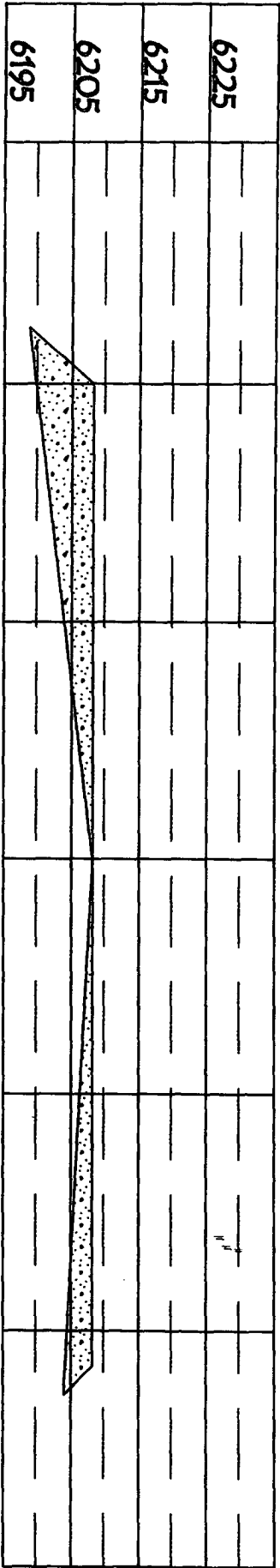


LATITUDE: 36° 51.2036' N LONGITUDE: 107° 39.4149' W NAD27

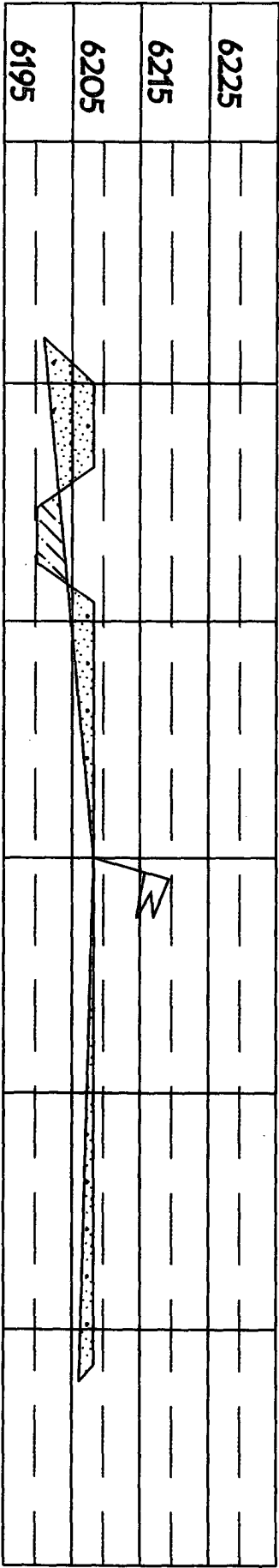
NOTE: VECTOR SURVEYS IS NOT LIABLE FOR UNDERGROUND UTILITIES OR PIPELINES.  
 CONTRACTOR SHOULD CALL ONE-CALL FOR LOCATION OF ANY MARKED OR UNMARKED BURIED  
 PIPELINES OR CABLES ON WELL PAD AND OR ACCESS ROAD AT LEAST TWO (2) WORKING DAYS PRIOR TO CONSTRUCTION.

**BURLINGTON RESOURCES OIL & GAS COMPANY LP**  
**HALE #3535, 2200' FSL & 1095' FEL**  
**SECTION 34, T-31-N, R-8-W, NMPM, SAN JUAN COUNTY, NM**  
**GROUND ELEVATION: 6208', DATE: NOVEMBER 3, 2005**

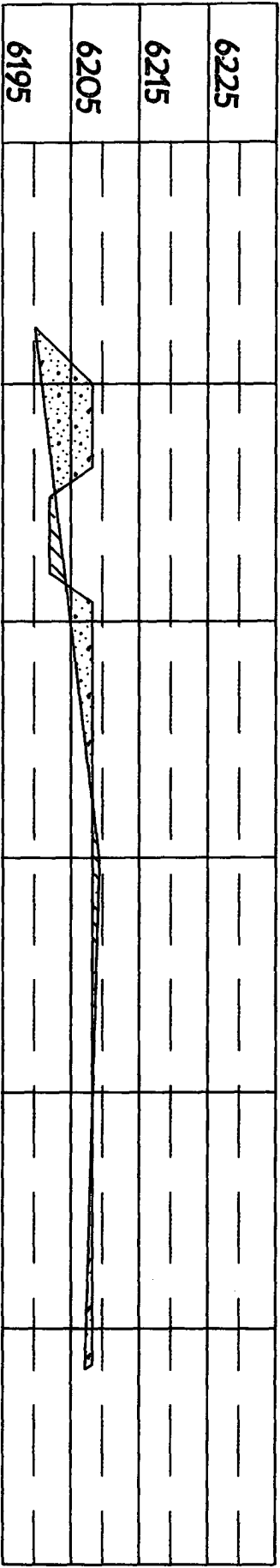
**ELEV. A'-A**



**ELEV. B'-B**



**ELEV. C'-C**



NOTE: VECTOR SURVEYS IS NOT LIABLE FOR UNDERGROUND UTILITIES OR PIPELINES.  
 CONTRACTOR SHOULD CALL ONE-CALL FOR LOCATION OF ANY MARKED OR UNMARKED BURIED  
 PIPELINES OR CABLES ON WELL PAD AND OR ACCESS ROAD AT LEAST TWO (2) WORKING DAYS PRIOR TO CONSTRUCTION.

Directions from the Post Office  
in Blanco, NM

To:

Burlington Resources Oil & Gas Company LP  
HALE #353S  
2200' FSL & 1095' FEL,  
Section 34, T31N, R8W, N.M.P.M., San Juan County,  
New Mexico

From the Post Office in Blanco, NM  
Go East on Hwy 64 for 2.2 miles to Highway 511  
turn left on Hwy 511 (N) for 18.5 miles,  
turn left (W) 0.3 miles,  
turn left (SW) 1.4 miles,  
turn right (S) for 1.4 miles,  
to the staked location on existing well pad  
Hale #4A.

# BURLINGTON RESOURCES OIL & GAS CO LP

HALE #353S

2200' FSL & 1095' FEL

SEC. 34, T31N R8W, N.M.P.M.

SAN JUAN COUNTY, NEW MEXICO

APD MAP

NO NEW ACCESS

EXISTING ACCESS

HALE #353S

