

District I  
1625 N. French Dr., Hobbs, NM 88240  
District II  
1301 W. Grand Avenue, Artesia, NM 88210  
District III  
1000 Rio Brazos Road, Aztec, NM 87410  
District IV  
1220 S. St. Francis Dr., Santa Fe, NM 87505

State of New Mexico  
Energy Minerals and Natural Resources

Oil Conservation Division  
1220 South St. Francis Dr.  
Santa Fe, NM 87505

Form C-144  
June 1, 2004

For drilling and production facilities, submit to appropriate NMOCD District Office.  
For downstream facilities, submit to Santa Fe office

**Pit or Below-Grade Tank Registration or Closure**

Is pit or below-grade tank covered by a "general plan"? Yes ☐ No ☒

Type of action: Registration of a pit or below-grade tank ☐ Closure of a pit or below-grade tank ☒

Operator: Dugan Production Corp. Telephone: (505)325-1821 e-mail address: paulsikora@duganproduction.com

Address: P. O. Box 420, Farmington, NM 87499-0420

Facility or well name: State Com #2B API #: 30-045-32631 U/L or Qtr/Qtr D Sec 16 T 32N R 12W

County: San Juan Latitude 36.99027 Longitude 108.10583 NAD: 1927 ☒ 1983 ☐ Surface Owner Federal ☐ State ☒ Private ☐ Indian ☐

**Pit**

Type: Drilling ☒ Production ☐ Disposal ☐

Workover ☐ Emergency ☐

Lined ☒ Unlined ☐

Liner type: Synthetic ☒ Thickness 12 mil Clay ☐

Pit Volume 10780 bbl

**Below-grade tank**

Volume:        bbl Type of fluid:       

Construction material:       

Double-walled, with leak detection? Yes ☐ If not, explain why not.       

Depth to ground water (vertical distance from bottom of pit to seasonal high water elevation of ground water.)

Less than 50 feet

(20 points)

50 feet or more, but less than 100 feet

(10 points)

100 feet or more

( 0 points)

0

Wellhead protection area: (Less than 200 feet from a private domestic water source, or less than 1000 feet from all other water sources.)

Yes

(20 points)

No

( 0 points)

0

Distance to surface water: (horizontal distance to all wetlands, playas, irrigation canals, ditches, and perennial and ephemeral watercourses.)

Less than 200 feet

(20 points)

200 feet or more, but less than 1000 feet

(10 points)

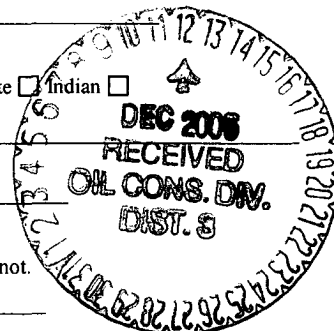
1000 feet or more

( 0 points)

0

**Ranking Score (Total Points)**

0



**If this is a pit closure:** (1) attach a diagram of the facility showing the pit's relationship to other equipment and tanks. (2) Indicate disposal location: (check the onsite box if you are burying in place) onsite ☒ offsite ☐ If offsite, name of facility       . (3) Attach a general description of remedial action taken including remediation start date and end date. (4) Groundwater encountered: No ☒ Yes ☐ If yes, show depth below ground surface        ft. and attach sample results. (5) Attach soil sample results and a diagram of sample locations and excavations.

The lined drilling pit at the State Com #2B closure. The pit liner folded at the mudline, encapsulated & covered. The pits dimension are 10' deep x 60' long x 168' long with a 6' average slope and its center is 51' NW of wellhead. See attached. Until a general permit is prepared and approved, Dugan Production Corp. intends to follow NMOCD guidelines.

I hereby certify that the information above is true and complete to the best of my knowledge and belief. I further certify that the above-described pit or below-grade tank has been/will be constructed or closed according to NMOCD guidelines ☐, a general permit ☐, or an (attached) alternative OCD-approved plan ☒.

Date: December 7, 2005

Printed Name/Title Paul Sikora, Production Foreman

Signature       

Your certification and NMOCD approval of this application/closure does not relieve the operator of liability should the contents of the pit or tank contaminate ground water or otherwise endanger public health or the environment. Nor does it relieve the operator of its responsibility for compliance with any other federal, state, or local laws and/or regulations.

Approval:

DEPUTY OIL & GAS INSPECTOR, DIST. 5

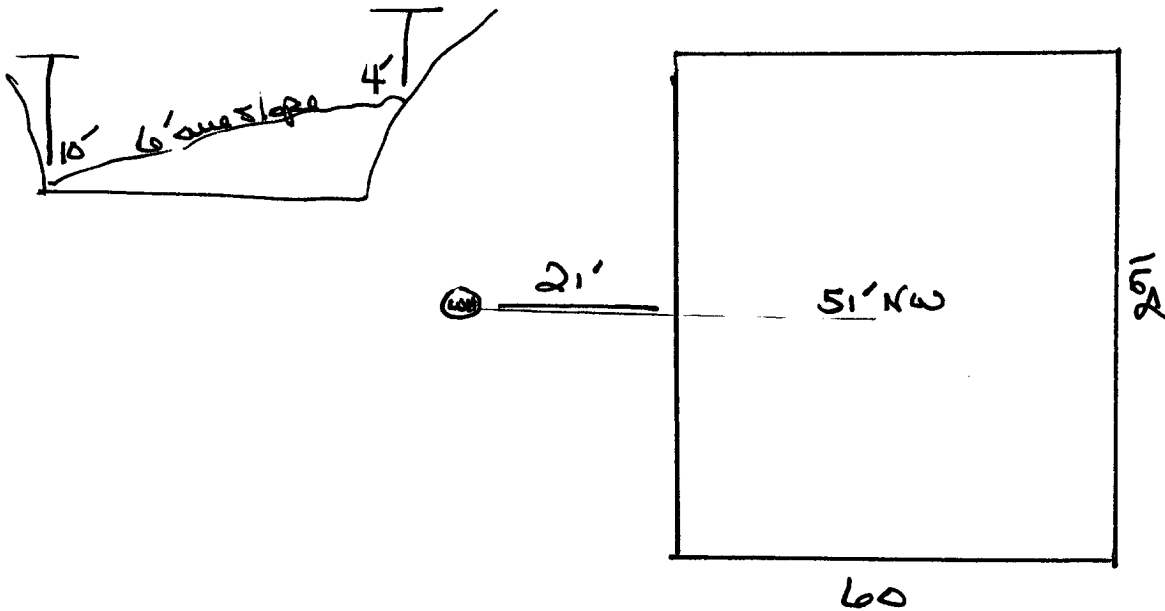
Printed Name/Title       

Signature       

Date:       

DEC 12 2005

State Com 2B



Pit center is 51' NW  
of well head.

Not to scale.