

Submit 3 Copies To Appropriate District Office  
District I  
1625 N. French Dr., Hobbs, NM 88240  
District II  
1301 W. Grand Ave., Artesia, NM 88210  
District III  
1000 Rio Brazos Rd., Aztec, NM 87410  
District IV  
1220 S. St. Francis Dr., Santa Fe, NM 87505

State of New Mexico  
Energy, Minerals and Natural Resources

Form C-103  
May 27, 2004

OIL CONSERVATION DIVISION  
1220 South St. Francis Dr.  
Santa Fe, NM 87505

WELL API NO. 30-045-32691
5. Indicate Type of Lease STATE <input type="checkbox"/> FEE <input checked="" type="checkbox"/>
6. State Oil & Gas Lease No.
7. Lease Name or Unit Agreement Name RIO BRAVO
8. Well Number #08
9. OGRID Number
10. Pool name or Wildcat BASIN DAKOTA/FRUITLAND COAL

SUNDRY NOTICES AND REPORTS ON WELLS (DO NOT USE THIS FORM FOR PROPOSALS TO DRILL OR TO DEEPEN OR PLUG BACK TO A DIFFERENT RESERVOIR. USE "APPLICATION FOR PERMIT" (FORM C-101) FOR SUCH PROPOSALS.)	
1. Type of Well: Oil Well <input type="checkbox"/> Gas Well <input checked="" type="checkbox"/> Other	
2. Name of Operator PATINA SAN JUAN, INC.	
3. Address of Operator 5802 U.S. HIGHWAY 64 FARMINGTON, NM 87401	
4. Well Location Unit Letter <u>H</u> : <u>1980</u> feet from the <u>NORTH</u> line and <u>660'</u> feet from the <u>EAST</u> line Section <u>27</u> Township <u>31N</u> Range <u>13W</u> NMPM County <u>SAN JUAN</u>	
11. Elevation (Show whether DR, RKB, RT, GR, etc.)	
Pit or Below-grade Tank Application <input checked="" type="checkbox"/> or Closure <input type="checkbox"/>	
Pit type <u>Drilling</u> Depth to Groundwater <u>&gt;100'</u> Distance from nearest fresh water well <u>&gt;200'</u> Distance from nearest surface water <u>&gt;1000'</u>	
Pit Liner Thickness: <u>14</u> mil Below-Grade Tank: Volume <u>        </u> bbls; Construction Material <u>        </u>	

12. Check Appropriate Box to Indicate Nature of Notice, Report or Other Data

NOTICE OF INTENTION TO:		SUBSEQUENT REPORT OF:	
PERFORM REMEDIAL WORK <input type="checkbox"/>	PLUG AND ABANDON <input type="checkbox"/>	REMEDIAL WORK <input type="checkbox"/>	ALTERING CASING <input type="checkbox"/>
TEMPORARILY ABANDON <input type="checkbox"/>	CHANGE PLANS <input type="checkbox"/>	COMMENCE DRILLING OPNS. <input type="checkbox"/>	P AND A <input type="checkbox"/>
PULL OR ALTER CASING <input type="checkbox"/>	MULTIPLE COMPL <input type="checkbox"/>	CASING/CEMENT JOB <input type="checkbox"/>	
OTHER: NAME CHANGE <input checked="" type="checkbox"/>		OTHER: PERMIT EXTENSION <input checked="" type="checkbox"/>	

13. Describe proposed or completed operations. (Clearly state all pertinent details, and give pertinent dates, including estimated date of starting any proposed work). SEE RULE 1103. For Multiple Completions: Attach wellbore diagram of proposed completion or recompletion.

PATINA SAN JUAN, INC. REQUESTS AN EXTENSION TO THE APPROVED PERMIT TO DRILL EXPIRING NOVEMBER 23, 2005.

CHANGE OF WELL NAME FROM: TEMPLETON #8  
TO: RIO BRAVO #08 25016

ADD THE BASIN DAKOTA FORMATION PER ATTACHED DRILLING PLAN AND PLAT

*extended to Nov. 23, 2006*

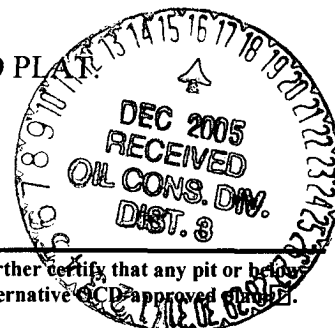
I hereby certify that the information above is true and complete to the best of my knowledge and belief. I further certify that any pit or below grade tank has been/will be constructed or closed according to NMOCD guidelines ☒, a general permit ☐ or an (attached) alternative OCD approved plan ☐.

SIGNATURE [Signature] TITLE REGULATORY/ENGINEERING TECH. DATE 11/30/2005

Type or print name          E-mail address:          Telephone No.         

APPROVED BY: [Signature] TITLE DEPUTY OIL & GAS INSPECTOR, DIST. 8 DATE DEC 16 2005

Conditions of Approval (if any):         



District I  
PO Box 1980, Hobbs, NM 88241-1980

District II  
PO Drawer DD, Artesia, NM 88211-0719

District III  
1000 Rio Brazos Rd., Aztec, NM 87410

District IV  
PO Box 2088, Santa Fe, NM 87504-2088

State of New Mexico  
Energy, Minerals & Natural Resources Department

OIL CONSERVATION DIVISION  
PO Box 2088  
Santa Fe, NM 87504-2088

Form C-102  
Revised February 21, 1994  
Instructions on back  
Submit to Appropriate District Office  
State Lease - 4 Copies  
Fee Lease - 3 Copies

☐ AMENDED REPORT

WELL LOCATION AND ACREAGE DEDICATION PLAT

*API Number <b>30-045-32691</b>		*Pool Code <del>71629</del> / 71629	*Pool Name <del>BASIN SANTA</del> / BASIN FRUITLAND COAL
*Property Code	*Property Name RIO BRAVO		*Well Number 08
*OGRID No. 173252	*Operator Name PATINA SAN JUAN, INC.		*Elevation 5639'

<sup>10</sup> Surface Location

UL or lot no.	Section	Township	Range	Lot Idn	Feet from the	North/South line	Feet from the	East/West line	County
H	27	31N	13W		1980	NORTH	660	EAST	SAN JUAN

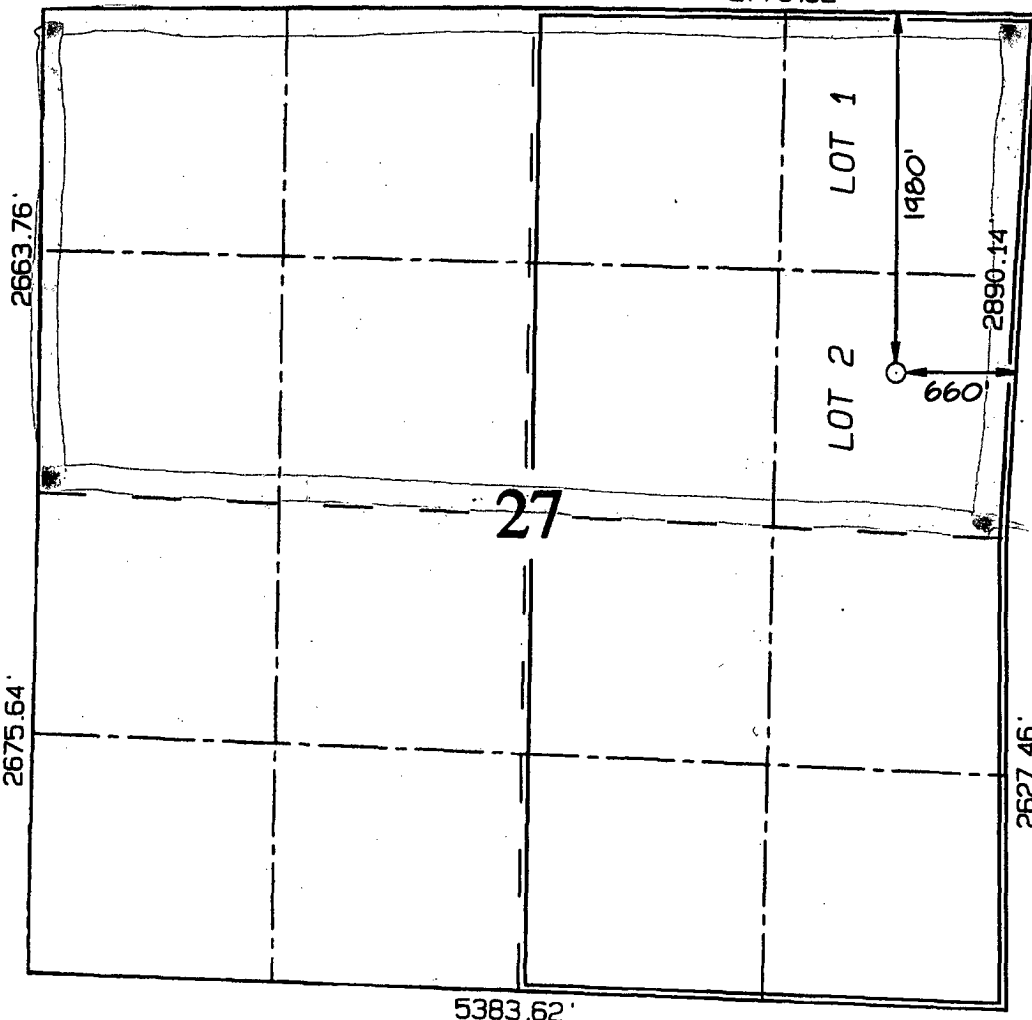
<sup>11</sup> Bottom Hole Location If Different From Surface

UL or lot no.	Section	Township	Range	Lot Idn	Feet from the	North/South line	Feet from the	East/West line	County
<sup>12</sup> Dedicated Acres <b>329.25</b> <del>320.00</del> Acres <del>N/2</del> <del>SE/4</del>					<sup>13</sup> Joint or Infill	<sup>14</sup> Consolidation Code	<sup>15</sup> Order No.		

NO ALLOWABLE WILL BE ASSIGNED TO THIS COMPLETION UNTIL ALL INTERESTS HAVE BEEN CONSOLIDATED  
OR A NON-STANDARD UNIT HAS BEEN APPROVED BY THE DIVISION

2693.46'

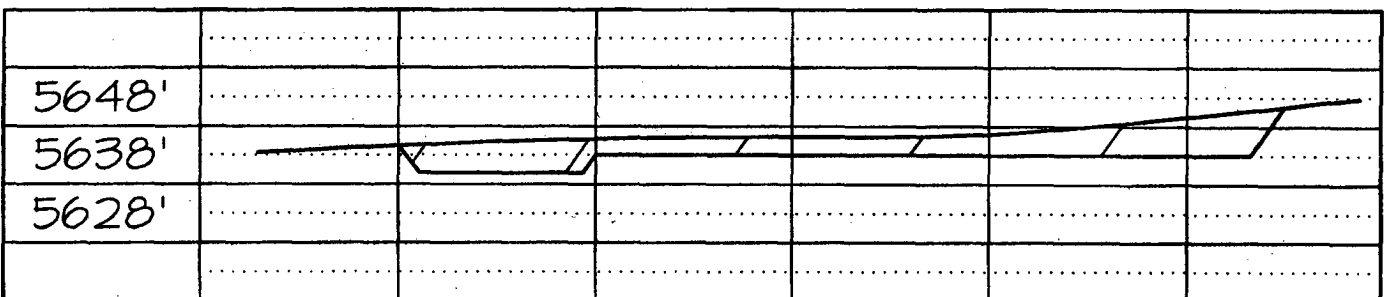
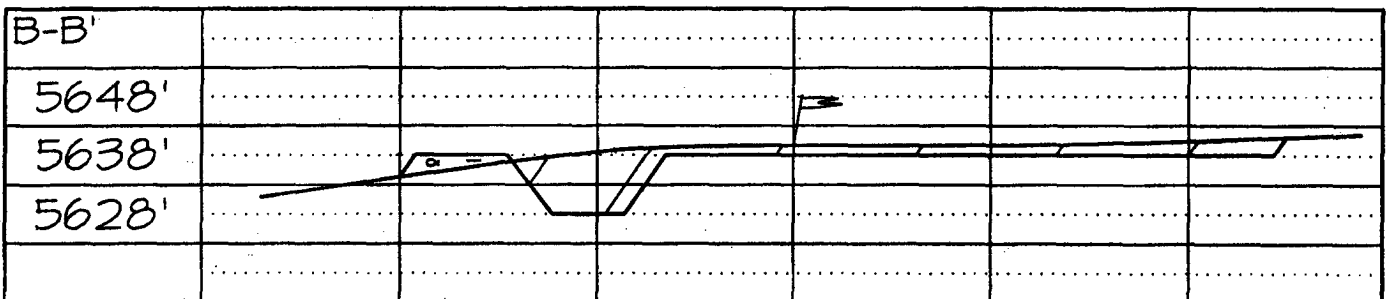
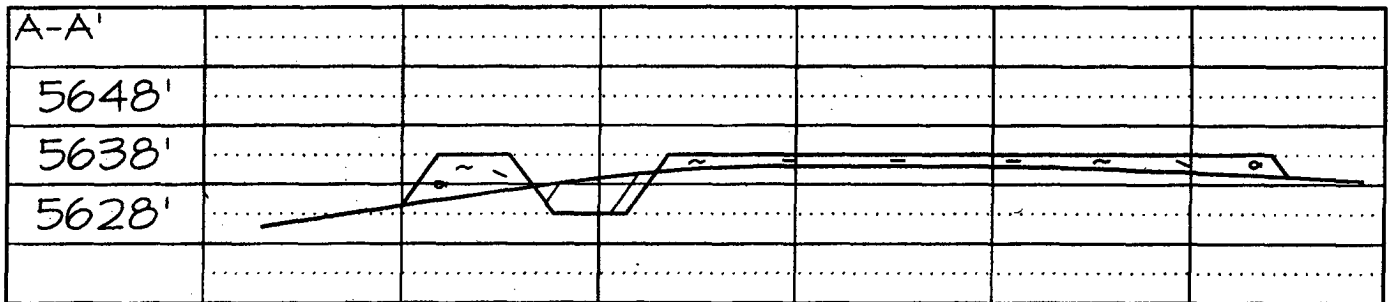
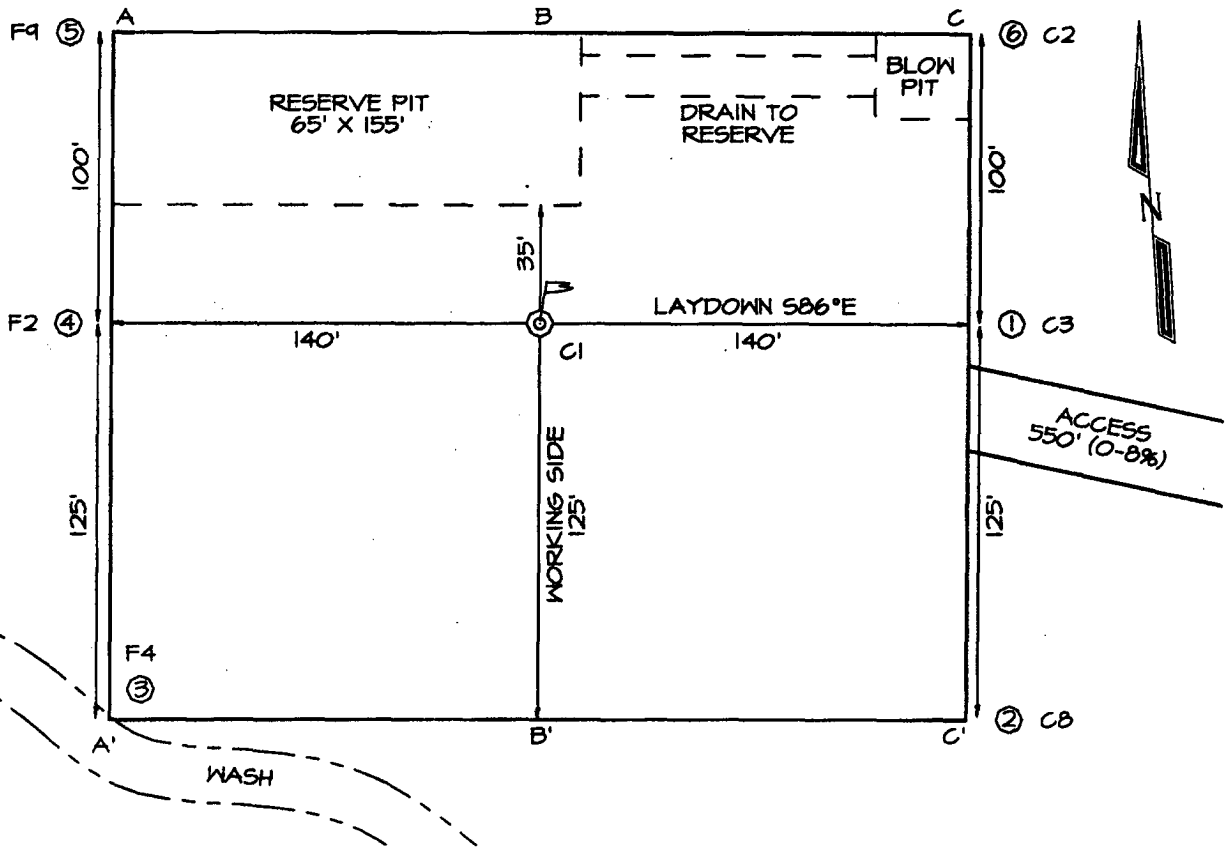
2776.62'



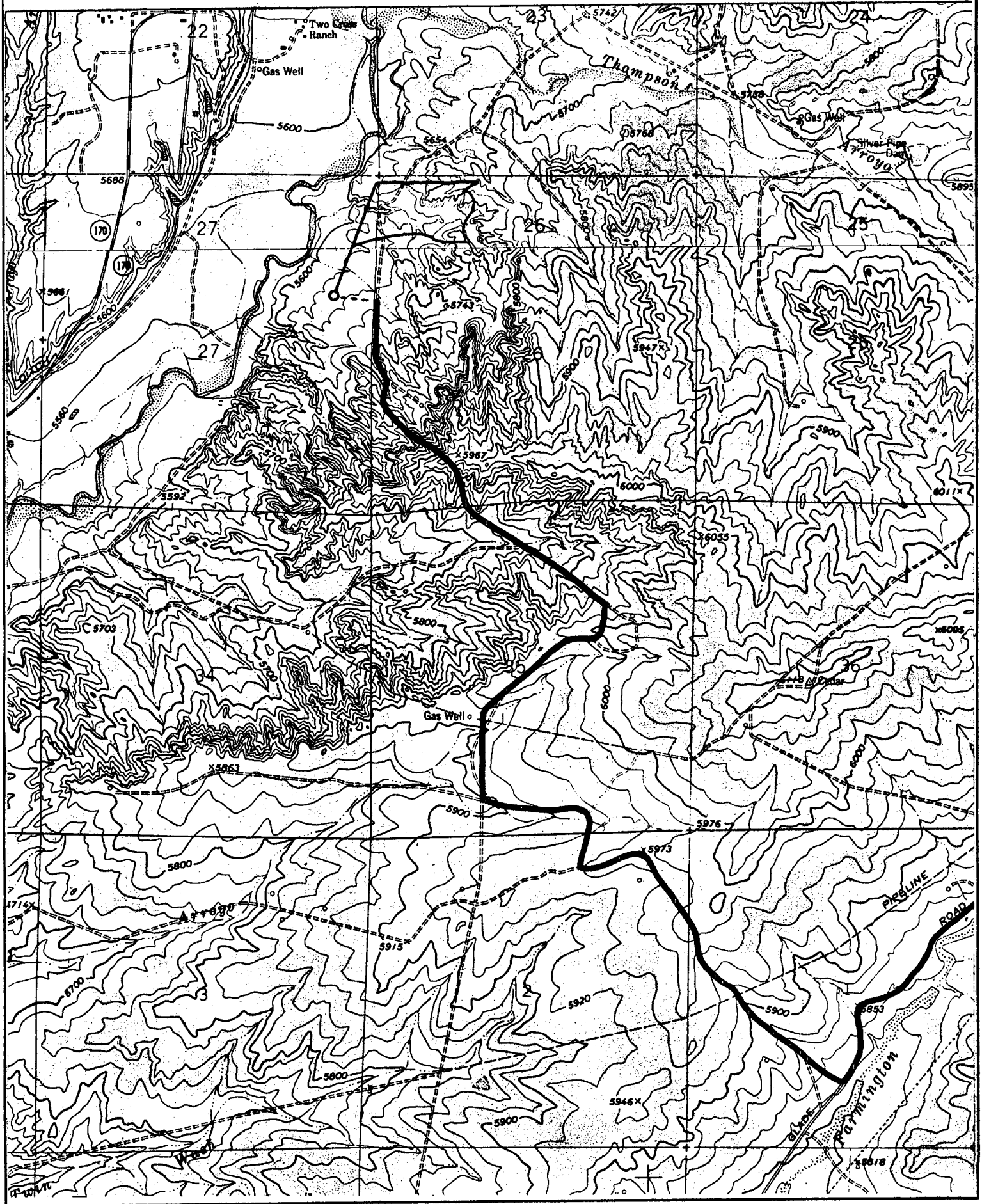
<p><sup>17</sup> OPERATOR CERTIFICATION</p> <p>I hereby certify that the information contained herein is true and complete to the best of my knowledge and belief</p> <p><i>Jason Muse</i> Signature</p> <p><b>Jason Muse</b> Printed Name</p> <p><b>Reg/Engng Tech</b> Title</p> <p><b>12/1/05</b> Date</p>	<p><sup>18</sup> SURVEYOR CERTIFICATION</p> <p>I hereby certify that the well location shown on this plat was plotted from field notes of actual surveys made by me or under my supervision, and that the same is true and correct to the best of my belief.</p> <p>Date Revised: DECEMBER 13, 2005 Survey Date: OCTOBER 1, 2004</p> <p>Signature and Seal of Professional Surveyor</p> <p><b>JASON C. EDWARDS</b> NEW MEXICO REGISTERED PROFESSIONAL SURVEYOR 15269</p> <p><b>JASON C. EDWARDS</b> Certificate Number 15269</p>
------------------------------------------------------------------------------------------------------------------------------------------------------------------------------------------------------------------------------------------------------------------------------------------------------------------------------	------------------------------------------------------------------------------------------------------------------------------------------------------------------------------------------------------------------------------------------------------------------------------------------------------------------------------------------------------------------------------------------------------------------------------------------------------------------------------------------------------------------------------------------------------

**PATINA SAN JUAN, INC. RIO BRAVO 27 #08**  
**1980' FNL & 660' FEL, SECTION 27, T31N, R13W, NMPM**  
**SAN JUAN COUNTY, NEW MEXICO ELEVATION: 5639'**

**LATITUDE: 36°52'22"**  
**LONGITUDE: 108°11'03"**  
 DATUM: NAD1927



PATINA SAN JUAN, INC. RIO BRAVO 27 #08  
1980' FNL & 660' FEL, SECTION 27, T31N, R13W, N.M.P.M.  
SAN JUAN COUNTY, NEW MEXICO



**Rio Bravo 27 #08  
General Drilling Plan  
Patina San Juan, Inc.  
San Juan County, New Mexico**

**1. LOCATION:**

Est. elevation: 5639'  
SENE of Section 27, T31N, R13W  
San Juan, New Mexico

Field: Blanco Mesa Verde & Basin DK  
Surface: Fee  
Minerals: Fee

**2. SURFACE FORMATION, ESTIMATED TOPS AND WATER, OIL, GAS OR MINERAL BEARING FORMATIONS (TVD):**

Surface formation – Nacimiento

<b><u>Formation</u></b>	<b><u>Estimated Formation Top (Ft)</u></b>
Ojo Alamo	749
Kirtland	858
Fruitland**	1169
Pictured Cliffs**	1628
Lewis	1934
Cliff House**	2720
Menefee**	3487
Point Lookout***	3873
Mancos	4568
Gallup	5753
Greenhorn	6267
Graneros	6329
Dakota ***	6399
TD	6600

Legend:      \* Freshwater bearing formation  
             \*\* Possible hydrocarbon bearing formation  
             \*\*\* Probable hydrocarbon bearing formation  
             # Possible H2S bearing formation

All fresh water and prospectively valuable minerals encountered during drilling will be recorded by depth and adequately protected.

### **3. PRESSURE CONTROL EQUIPMENT:**

BOP equipment will be tested to its rated working pressure or 70-percent of the internal yield of the surface casing, but not to exceed 1,000 psi. See attachments for BOP and choke manifold diagrams.

#### **Production Hole BOP Requirements and Test Plan**

11" – 2,000 psi single ram (blind)

11" – 2,000 psi single ram (pipe)

Test as follows:

a) Pipe rams:	1,000 psi (High)	250 psi (low)
b) Choke manifold:	1,000 psi (High)	250 psi (low)
c) Choke lines:	1,000 psi (High)	250 psi (low)

All ram type preventers and related equipment will be hydraulically tested at nipple-up. They will also be retested in either of the following events:

- A pressure seal is broken.
- 30 days have elapsed since the last successful test of the equipment.

Furthermore, BOP's will be checked daily as to mechanical operating condition. All ram type preventers will have hand wheels, which will be operative and accessible at the time the preventers are installed. See attached Exhibit for details on the BOP equipment.

#### **AUXILIARY EQUIPMENT:**

- a) Manually operated kelly cock (upper and lower)
- b) Full opening manually operated safety valves in the full open position, capable of fitting all drill stem connections.

#### 4. CASING DESIGN:

Hole Data				
Interval	Bit Size (Inches)	Casing Size (Inches)	Top (Ft)	Bottom (Ft)
Surface	13.50	9.625	0	300
Intermediate	8.75	7.0	0	4600
Production	6.25	4.5	4300	6600

Casing Data							
OD (Inches)	ID (Inches)	Weight (Lbs/Ft)	Grade	Thread	Collapse (psi)	Burst (psi)	Min. Tensile (Lbs)
9.625	8.921	36.0	J55	STC	2,020	3,520	394,000
7.000	6.366	23.0	L80	LTC	3,830	6,340	435,000
4.5	4.276	11.6	N80	LTC	6,350	7,780	223,000

#### MINIMUM CASING DESIGN FACTORS:

COLLAPSE: 1.125

BURST: 1.00

TENSION: 1.80

Area Fracture Gradient Range: 0.7 – 0.8 psi/foot

Maximum anticipated reservoir pressure: 2,500 psi

Maximum anticipated mud weight: 9.0 ppg

Maximum surface treating pressure: 3,750 psi

Float Equipment:

**Surface Casing:** Guide shoe on bottom and 3 centralizers on the bottom 3 joints.

**Intermediate Casing:** Float shoe on bottom joint and a float collar one joint up from float shoe. One centralizer 10 ft above float shoe and nine centralizers spaced every joint above the float collar. Stage tool above the Cliffhouse formation. One centralizer below stage tool and one centralizer above stage tool.

**Production Casing:** 4 1/2" whirler type cement nosed guide shoe and a float collar on top of bottom joint with centralizers over potential hydrocarbon bearing zones.

## CEMENTING PROGRAMS:

### 9-5/8" Surface casing:

225 sx Type III cement with 3% CaCl<sub>2</sub>, ¼#/sx cellofakes. 100% excess to circulate cement to surface. WOC 12 hrs. Pressure test surface casing to 1000 psi for 30 minutes.

Slurry weight: 14.5 ppg  
Slurry yield: 1.42 ft<sup>3</sup>/sack

Volume basis:	40' of 9-5/8" shoe joint	17 cu ft
	300' of 13-1/2" x 9-5/8" annulus	147 cu ft
	<u>100% excess (annulus)</u>	<u>147 cu ft</u>
	Total	311 cu ft

Note:

1. Design top of cement is the surface.
2. Have available 100 sx Type III cement with 2% CaCl<sub>2</sub> for top out purposes.

### 7" Intermediate Casing:

1<sup>st</sup> Stage:  
195 sx of Type III cement plus additives  
Slurry weight: 12.3 ppg  
Slurry yield: 2.22 ft<sup>3</sup>/sx

2<sup>nd</sup> Stage: (Stage tool at ±2500')  
Lead: 195 sx of Type III cement plus additives  
Slurry weight: 12.3 ppg  
Slurry yield: 2.22 ft<sup>3</sup>/sx

Tail: 50 sx of Type III cement plus additives  
Slurry weight: 14.5 ppg  
Slurry yield: 1.40 ft<sup>3</sup>/sx

Volume Basis:	40' of 7" shoe joint	9 cu ft
	4300' of 7" x 8 ¾" hole	647 cu ft
	300' of 7" x 9 5/8" casing	50 cu ft
	<u>30% excess (annulus)</u>	<u>209 cu ft</u>
	Total	915 cu ft

Note:

1. Design top of cement is surface.
2. Actual cement volumes to be based on caliper log plus 30%.



**4 1/2" Production casing:**

175 sx of Type III cement plus additives

Slurry weight: 12.5 ppg

Slurry yield: 2.06 ft<sup>3</sup>/sx

Volume basis:	40' of 4 1/2" shoe joint	5 cu ft
	2000' of 4 1/2" x 6 1/4" hole	205 cu ft
	300' of 4 1/2" x 7" casing overlap	33 cu ft
	200' above 4.5" liner (without drill pipe)	44 cu ft
	<u>30% excess (annulus)</u>	<u>72 cu ft</u>
	Total	359 cu ft

**Note:**

1. Design top of cement is ±4100' (200' above the top of the 4.5" liner w/out drill pipe).
2. Actual cement volumes to be based on caliper log plus 30%.

**5. MUD PROGRAM:**

The surface hole will be drilled with spud mud. Gel and polymer sweeps will be used from surface to 300 feet as necessary to keep hole clean.

The intermediate hole will be drilled with water until mud up at about 3100 ft. From mud up point to intermediate casing depth (±4600'), it will be drilled with a LSND mud. Anticipated mud weight ranges from 8.5 – 9.2 ppg. Mud weight will be increased as required to maintain hole stability and control gas influx.

The production hole will be drilled with air or air/mist to TD.

Sufficient mud materials to maintain stable wellbore conditions (for either well control or lost circulation scenarios) will be maintained at the well site.

No chrome-based additives will be used in the mud system.

**6. EVALUATION PROGRAM:**

Mud logger: From base of surface casing to TD.

Testing: No DST is planned

Coring: None Planned

Electric logs: Intermediate Hole:

1) DIL-GR-SP: TD to base of surface casing.

2) LDT-CNL-GR-CAL-PE: TD to base of surface casing

Production Hole:

1) No open hole logs

2) Cased hole resistivity & porosity logs

**7. ABNORMAL PRESSURE AND TEMPERATURE:**

H <sub>2</sub> S	None
Coal	Fruitland
Minerals	None
Water	None
Static BHT	175° F
Lost Circulation	Possible
Hole Deviation	None
Abnormal Pressures	None
Unusual Drilling Problems	None

**8. ANTICIPATED STARTING DATE: Q1, 2006**

Anticipated duration: 16 days

# Rio Bravo 27 #08

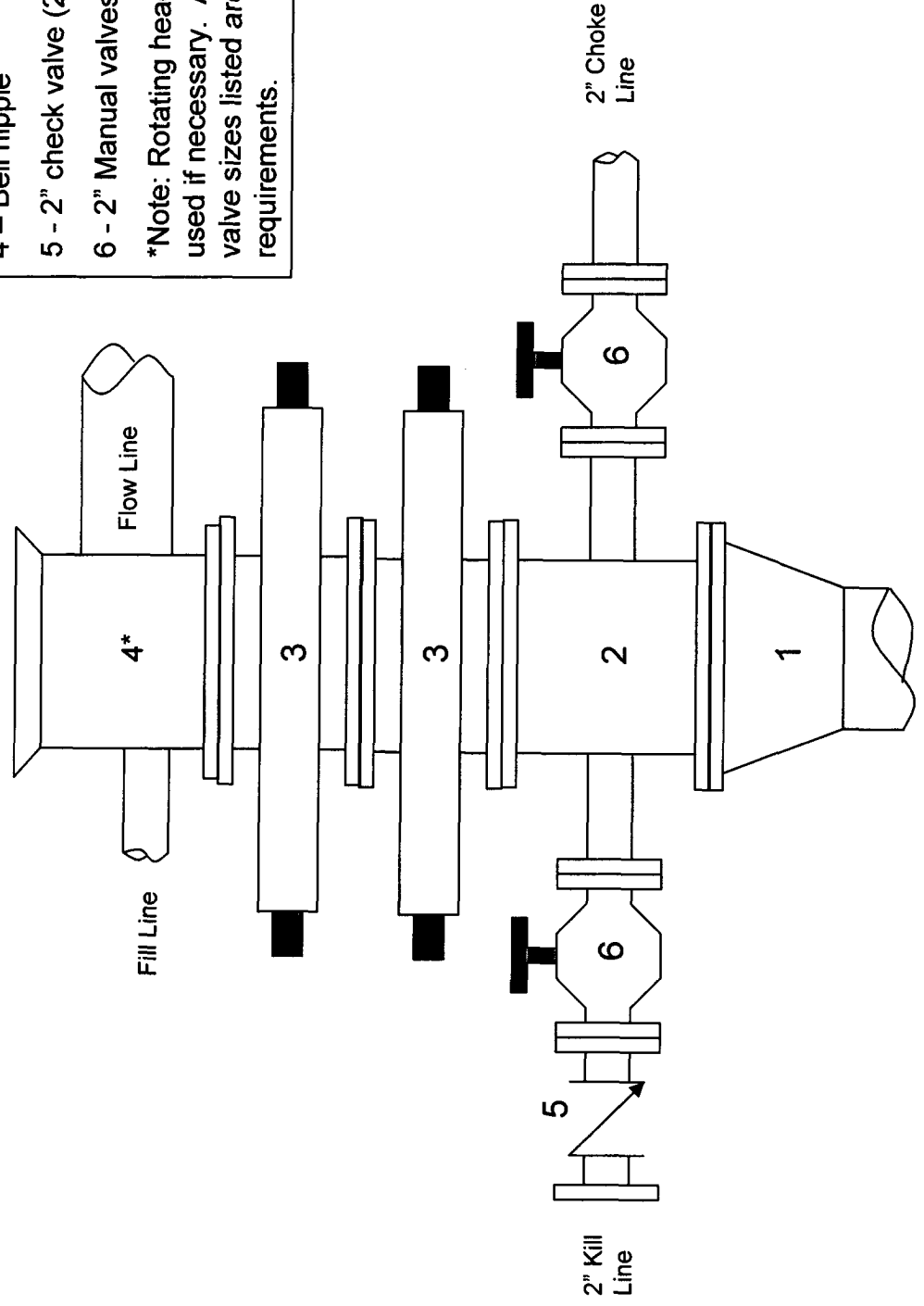
2000 psi BOP stack

Minimum requirements

## Components

- 1 - Wellhead 9-5/8" (2M)
- 2 - Drilling spool 11" (2M)
- 3 - A double or two single rams with blinds on bottom 11" (2M)
- 4 - Bell nipple\*
- 5 - 2" check valve (2M)
- 6 - 2" Manual valves (2M)

\*Note: Rotating head may also be used if necessary. Also, all line and valve sizes listed are minimum requirements.



# Rio Bravo 27 #08

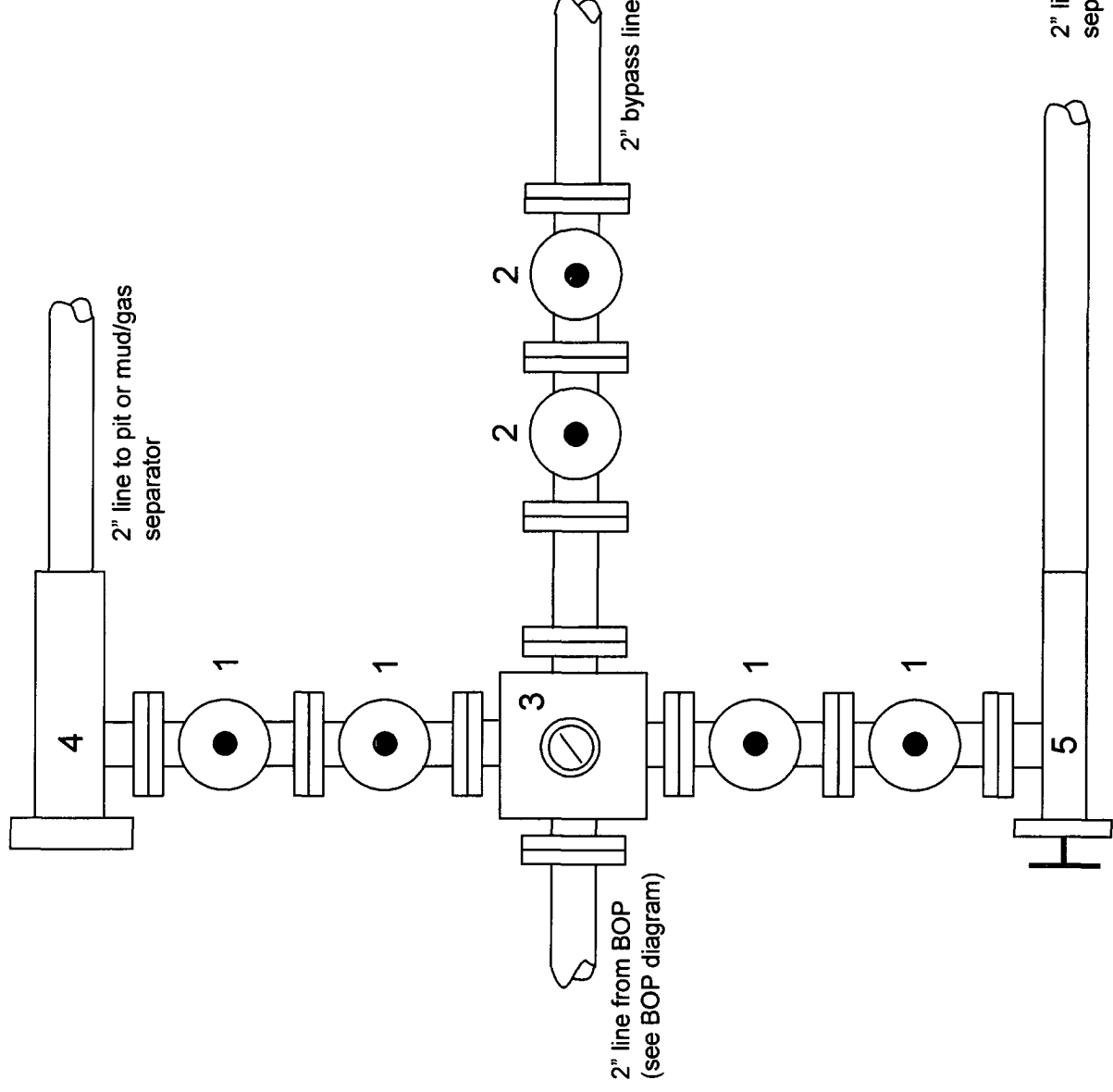
## 2000 psi Choke Manifold

### Minimum requirements

#### Components

- 1 – 2" Valve (2M)
- 2 – 2" Valve (2M)
- 3 – Mud cross with gauge (2M) flanged below the gage.
- 4 – Adjustable choke (2M)
- 5 – Adjustable choke (2M)

Note: All line and valve sizes listed are minimum requirements.



District I  
PO Box 1980, Hobbs, NM 88241-1980

District II  
PO Drawer 00, Artesia, NM 88211-0719

District III  
1000 Rio Brazos Rd., Aztec, NM 87410

District IV  
PO Box 2088, Santa Fe, NM 87504-2088

State of New Mexico.  
Energy, Minerals & Natural Resources Department

OIL CONSERVATION DIVISION  
PO Box 2088  
Santa Fe, NM 87504-2088

Form C-102  
Revised February 21, 1994  
Instructions on back  
Submit to Appropriate District Office  
State Lease - 4 Copies  
Fee Lease - 3 Copies

☐ AMENDED REPORT

WELL LOCATION AND ACREAGE DEDICATION PLAT

*API Number 30-045-32691		*Pool Code 72319/71599	*Pool Name Blanco Mesa Leaky BASIN DAKOTA
*Property Code	*Property Name TEMPLETON		*Well Number 08
*OGRID No. 173252	*Operator Name PATINA SAN JUAN, INC.		*Elevation 5639'

<sup>10</sup> Surface Location

UL or lot no.	Section	Township	Range	Lot Idn	Feet from the	North/South line	Feet from the	East/West line	County
H	27	31N	13W		1980	NORTH	660	EAST	SAN JUAN

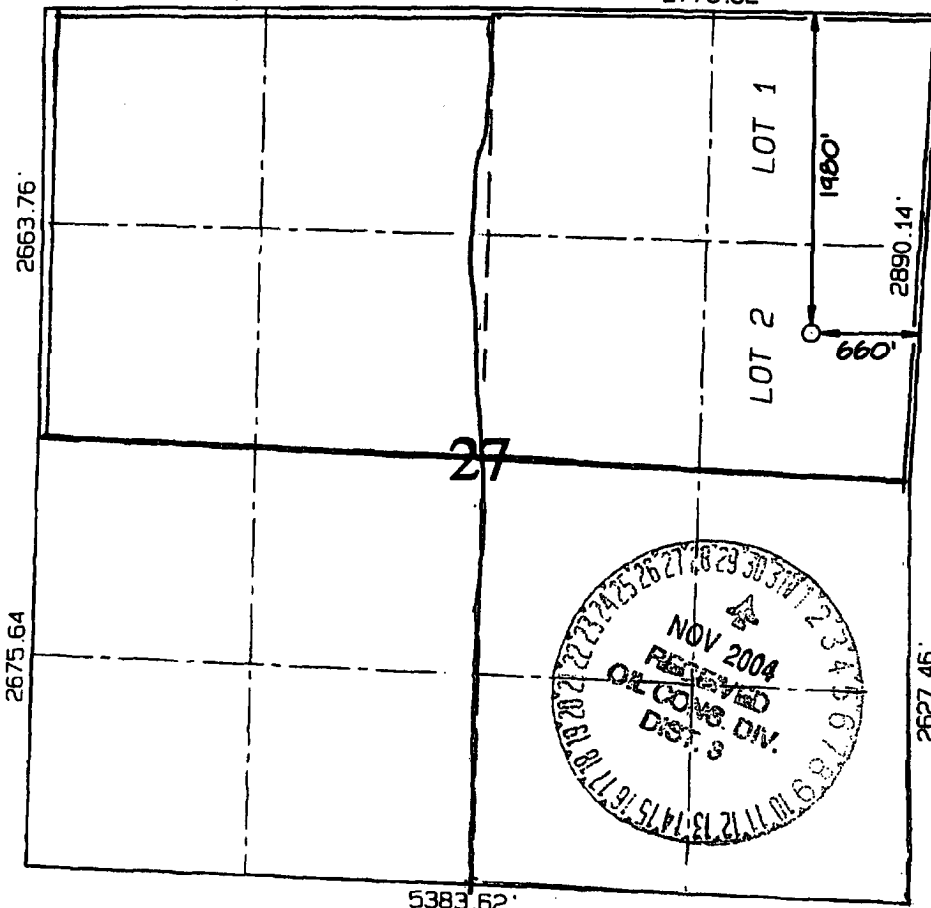
<sup>11</sup> Bottom Hole Location If Different From Surface

UL or lot no.	Section	Township	Range	Lot Idn	Feet from the	North/South line	Feet from the	East/West line	County
<sup>12</sup> Dedicated Acres 320.0 Acres - (N/2) OK R/2 MK					<sup>13</sup> Joint or Infill	<sup>14</sup> Consolidation Code	<sup>15</sup> Order No.		

NO ALLOWABLE WILL BE ASSIGNED TO THIS COMPLETION UNTIL ALL INTERESTS HAVE BEEN CONSOLIDATED  
OR A NON-STANDARD UNIT HAS BEEN APPROVED BY THE DIVISION

2693.46'

2776.62'



<sup>17</sup> OPERATOR CERTIFICATION

I hereby certify that the information contained herein is true and complete to the best of my knowledge and belief

*J. M. Muse*

Signature

*JEAN M. MUSE*

Printed Name

*Reg/Eng/tech*

Title

*11/29/04*

Date

<sup>18</sup> SURVEYOR CERTIFICATION

I hereby certify that the well location shown on this plat was plotted from field notes of actual surveys made by me or under my supervision and that the same is true and correct to the best of my belief.

Survey Date: OCTOBER 1, 2004

Signature and Seal of Professional Surveyor

*JASON C. EDWARDS*  
Certificate Number 15269

District I  
1625 N. French Dr., Hobbs, NM 88240  
District II  
1301 W. Grand Avenue, Artesia, NM 88210  
District III  
1000 Rio Brazos Road, Aztec, NM 87410  
District IV  
1220 S. St. Francis Dr., Santa Fe, NM 87505

State of New Mexico  
Energy Minerals and Natural Resources

Form C-101  
May 27, 2004

Oil Conservation Division  
1220 South St. Francis Dr.  
Santa Fe, NM 87505

Submit to appropriate District Office

☐ AMENDED REPORT

APPLICATION FOR PERMIT TO DRILL, RE-ENTER, DEEPEN, PLUGBACK, OR ADD A ZONE

Operator Name and Address Patina San Juan, Inc. 5802 U. S. Highway 64 Farmington, NM 87401 (505) 632-8056		OGRID Number 173252
Property Code 24079	Property Name TEMPLETON	API Number 30-045-32691
Proposed Pool 1 BASIN DAKOTA		Well No. #08
Proposed Pool 2 BLANCO MESA VERDE		

Surface Location

UL or lot no. H	Sec. 27	Township 31N	Range 13W	Lot Idn H	Feet from the 1980	North/South line NORTH	Feet from the 660	East/West line EAST	County SAN JUAN
--------------------	------------	-----------------	--------------	--------------	-----------------------	---------------------------	----------------------	------------------------	--------------------

Proposed Bottom Hole Location If Different From Surface

UL or lot no.	Section	Township	Range	Lot Idn	Feet from the	North/South line	Feet from the	East/West line	County
---------------	---------	----------	-------	---------	---------------	------------------	---------------	----------------	--------

Additional Well Information

Work Type Code N	Well Type Code G	Cable/Rotary R	Lease Type Code P	Ground Level Elevation 5639'
Multiple N	Proposed Depth 7300'	Formation Basin Dakota	Contractor N/A	Spud Date JUNE 1, 2005
Depth to Groundwater >100'		Distance from nearest fresh water well >200'		Distance from nearest surface water >1000'
Pit: Liner: Synthetic <input type="checkbox"/> 12 mils thick Clay <input type="checkbox"/> Pit Volume: _____ bbls Drilling Method: Closed-Loop System <input type="checkbox"/> Fresh Water <input checked="" type="checkbox"/> Brine <input type="checkbox"/> Diesel/Oil-based <input type="checkbox"/> Gas/Air <input checked="" type="checkbox"/>				

Proposed Casing and Cement Program

Hole Size	Casing Size	Casing weight/foot	Setting Depth	Sacks of Cement	Estimated TOC
12 1/4"	9 5/8"	36#	250'	165 sx	SURFACE
8 3/4"	7"	23#	4100' +/-	465 sx	SURFACE
6 1/4"	4 1/2"	11.6#	7300'	220 sx	3900'

Describe the proposed program. If this application is to DEEPEN or PLUG BACK, give the data on the present productive zone and proposed new productive zone. Describe the blowout prevention program, if any. Use additional sheets if necessary.

Patina San Juan, Inc. proposes to drill a vertical well at the above described location and test the Basin Dakota and Blanco Mesa Verde formations as referenced in the attached drilling plan and multi-point surface use plans.

The Basin Dakota/Blanco Mesa Verde formations will be selectively perforated and completed.

The well will be connected to Williams Field Services gathering system.

I hereby certify that the information given above is true and complete to the best of my knowledge and belief. I further certify that the drilling pit will be constructed according to NMOCD guidelines ☒ a general permit ☐, or an (attached) alternative OCD-approved plan ☐.

Printed name: JEAN M. MUSE

Title: REGULATORY/ENGINEERING TECHNICIAN

E-mail Address: jmuse@patinasanjuan.com

Date: 11/22/04

Phone: 505-632-8056

OIL CONSERVATION DIVISION

Approved by:

Title:

Approval Date:

Conditions of Approval Attached ☐

DEPUTY OIL & GAS INSPECTOR, DIST. 8B

NOV 23 2004

Expiration Date:

NOV 23 2005

District I  
PO Box 1980, Hobbs, NM 88241-1980

District II  
PO Drawer 00, Artesia, NM 88211-0719

District III  
1000 Rio Brazos Rd., Aztec, NM 87410

District IV  
PO Box 2088, Santa Fe, NM 87504-2088

State of New Mexico.  
Energy, Minerals & Natural Resources Department

OIL CONSERVATION DIVISION  
PO Box 2088  
Santa Fe, NM 87504-2088

Form C-102  
Revised February 21, 1994  
Instructions on back  
Submit to Appropriate District Office  
State Lease - 4 Copies  
Fee Lease - 3 Copies

☐ AMENDED REPORT

WELL LOCATION AND ACREAGE DEDICATION PLAT

*API Number <b>30045-32691</b>		*Pool Code <b>72319/71599</b>	*Pool Name <b>Blanco Mesa Verde BASIN DAKOTA</b>
*Property Code <b>24079</b>	*Property Name <b>TEMPLETON</b>		*Well Number <b>08</b>
*GRID No. <b>173252</b>	*Operator Name <b>PATINA SAN JUAN, INC.</b>		*Elevation <b>5639'</b>

<sup>10</sup> Surface Location

UL or lot no.	Section	Township	Range	Lot Idn	Feet from the	North/South line	Feet from the	East/West line	County
H	27	31N	13W		1980	NORTH	660	EAST	SAN JUAN

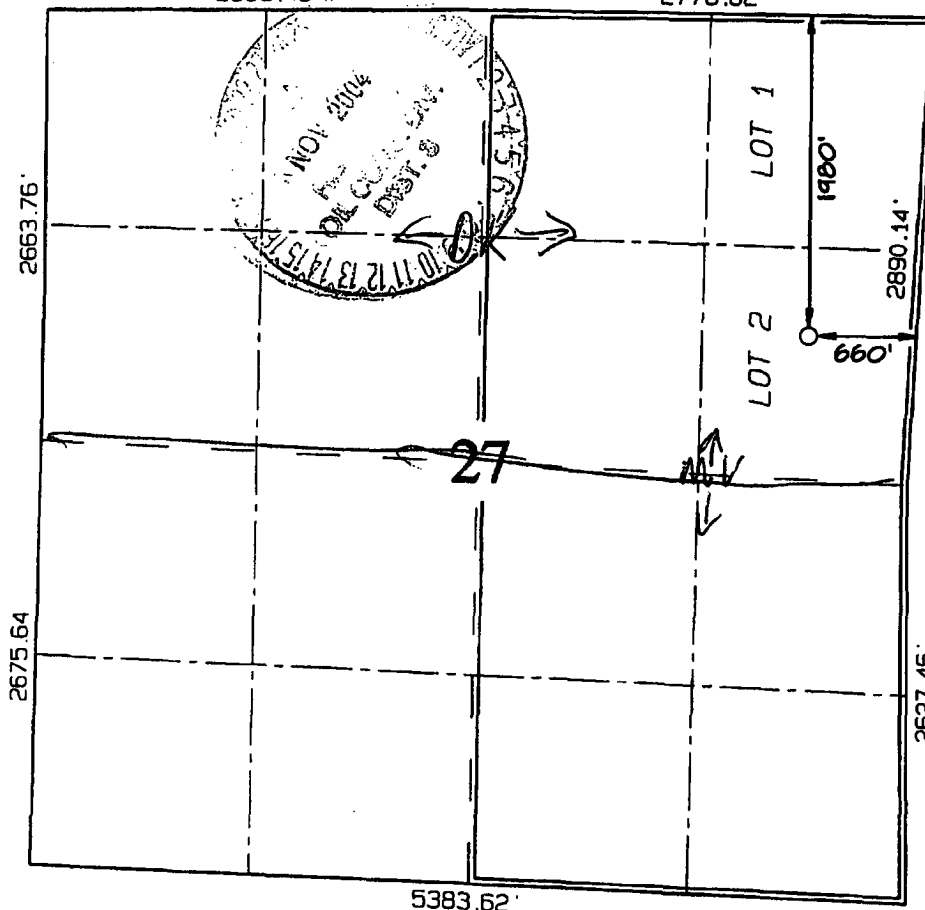
<sup>11</sup> Bottom Hole Location If Different From Surface

UL or lot no.	Section	Township	Range	Lot Idn	Feet from the	North/South line	Feet from the	East/West line	County
<sup>12</sup> Dedicated Acres <b>329.25</b> Acres - <b>(E/2) NW N/2 OK</b>					<sup>13</sup> Joint or Infill	<sup>14</sup> Consolidation Code	<sup>15</sup> Order No.		

NO ALLOWABLE WILL BE ASSIGNED TO THIS COMPLETION UNTIL ALL INTERESTS HAVE BEEN CONSOLIDATED  
OR A NON-STANDARD UNIT HAS BEEN APPROVED BY THE DIVISION

2693.46'

2776.62'



<sup>17</sup> OPERATOR CERTIFICATION

I hereby certify that the information contained herein is true and complete to the best of my knowledge and belief

Signature

**JEAN M. MUSE**  
Printed Name

**Reg/Engr'g Tech**  
Title

**11/22/04**  
Date

<sup>18</sup> SURVEYOR CERTIFICATION

I hereby certify that the well location shown on this plat was plotted from field notes of actual surveys made by me or under my supervision and that the same is true and correct to the best of my belief.

Survey Date: **OCTOBER 1, 2004**

Signature and Seal of Professional Surveyor



**JASON C. EDWARDS**  
Certificate Number 15269

**LATITUDE: 36°52'22"**  
**LONGITUDE: 108°11'03"**  
DATUM: NAD1927

DATUM: NAD1927

