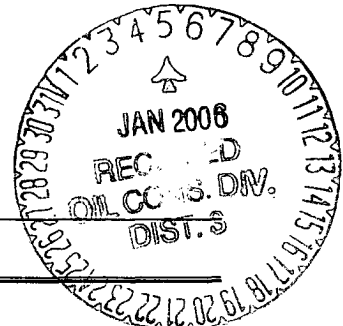


UNITED STATES
DEPARTMENT OF THE INTERIOR
BUREAU OF LAND MANAGEMENT



APPLICATION FOR PERMIT TO DRILL, DEEPEN, OR PLUG BACK

2005 NOV 17 PM 2:28
RECEIVED
070 FARMINGTON NM

1a. Type of Work DRILL	5. Lease Number NMSF-078503
1b. Type of Well GAS	Unit Reporting Number NMNM-0784178-DK/NMNM-0784174 MV
2. Operator BURLINGTON RESOURCES Oil & Gas Company LP	6. If Indian, All. or Tribe
3. Address & Phone No. of Operator PO Box 4289, Farmington, NM 87499 (505) 326-9700	7. Unit Agreement Name San Juan 29-7 Unit
4. Location of Well 1025' FSL, 365' FEL Latitude 36° , Longitude 107°	8. Farm or Lease Name San Juan 29-7 Unit 9. Well Number 109N
14. Distance in Miles from Nearest Town 18.7 miles to Blanco, NM	10. Field, Pool, Wildcat Blanco MV/Basin DK 11. Sec., Twn, Rge, Mer. (NMPM) Sec 30, T29N, R7W API # 30-039-29701
15. Distance from Proposed Location to Nearest Property or Lease Line 365'	12. County Rio Arriba
16. Acres in Lease	13. State NM
17. Acres Assigned to Well 320 E/2	
18. Distance from Proposed Location to Nearest Well, Drlg, Compl, or Applied for on this Lease 1173'	
19. Proposed Depth 7488'	20. Rotary or Cable Tools Rotary
21. Elevations (DF, FT, GR, Etc.) 6302' KB, 6314' KB	22. Approx. Date Work will Start
23. Proposed Casing and Cementing Program See Operations Plan attached	
24. Authorized by: <u>Frances Bond</u> Regulatory Specialist	<u>11-17-05</u> Date

PERMIT NO.

APPROVAL DATE

APPROVED BY

TITLE

DATE

Archaeological Report Attached

Threatened and Endangered Species Report Attached

NOTE: This format is issued in lieu of U.S. BLM Form 3160-3

Title 18 U.S.C. Section 1001 makes it a crime for any person knowingly and willfully to make to any department or agency of the United States any false, fictitious or fraudulent statements or presentations as to any matter within its jurisdiction.

NMOC

DISTRICT I
1625 N. French Dr., Hobbs, N.M. 88240

DISTRICT II
811 South First, Artesia, N.M. 88210

DISTRICT III
1000 Rio Brazos Rd., Aztec, N.M. 87410

DISTRICT IV
2040 South Pacheco, Santa Fe, NM 87505

State of New Mexico
Energy, Minerals & Natural Resources Department

Form C-102
Revised August 15, 2000

OIL CONSERVATION DIVISION

2040 South Pacheco
Santa Fe, NM 87505

Submit to Appropriate District Office
State Lease - 4 Copies
Fee Lease - 3 Copies

RECEIVED

070 FARMINGTON NM

☐ AMENDED REPORT

WELL LOCATION AND ACREAGE DEDICATION PLAT

¹ API Number 30-039-29701	² Pool Code 72319/71599	³ Pool Name Blanco Mesaverde/Basin Dakota
⁴ Property Code 7465	⁵ Property Name SAN JUAN 29-7 UNIT	⁶ Well Number 109N
⁷ GRID No. 14538	⁸ Operator Name BURLINGTON RESOURCES OIL AND GAS COMPANY LP	⁹ Elevation 6302'

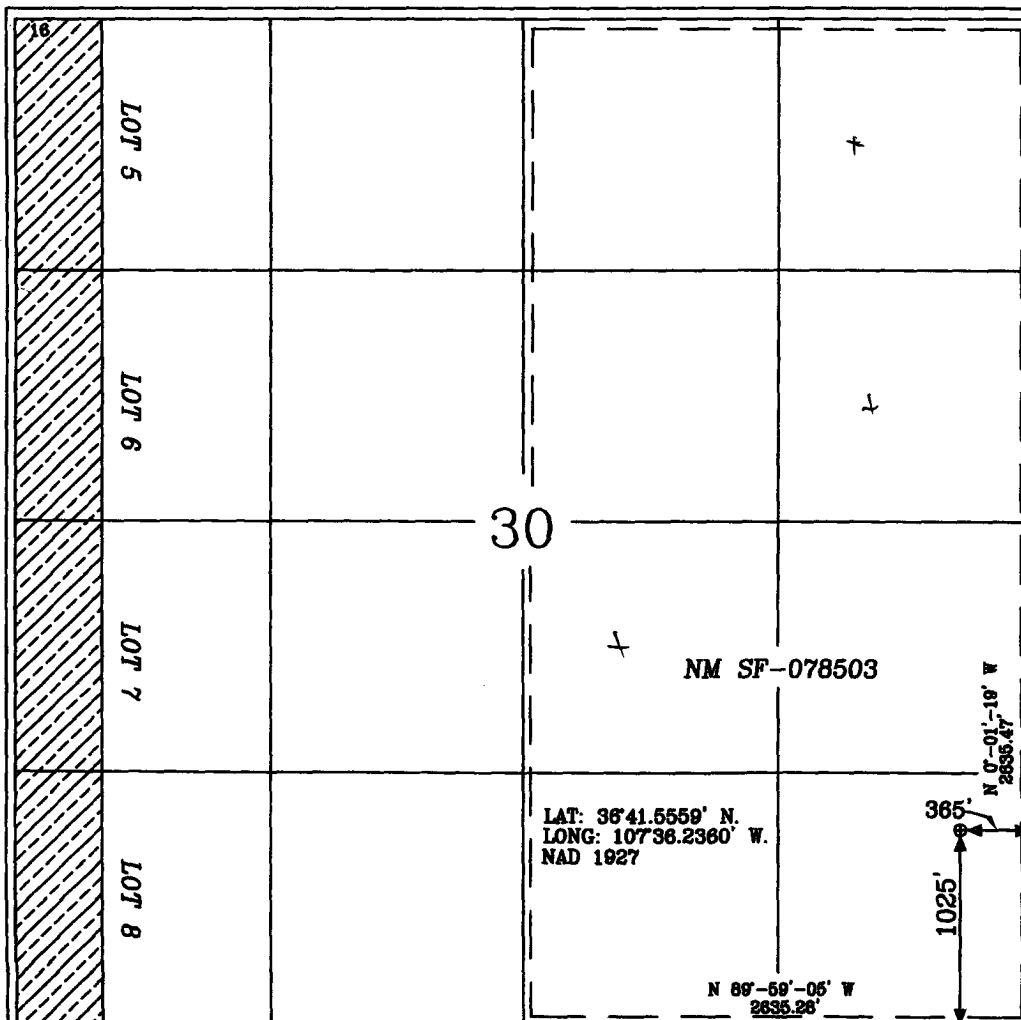
¹⁰ Surface Location

UL or lot no.	Section	Township	Range	Lot Idn	Feet from the	North/South line	Feet from the	East/West line	County
P	30	29-N	7-W		1025'	SOUTH	365'	EAST	RIO ARriba

¹¹ Bottom Hole Location If Different From Surface

UL or lot no.	Section	Township	Range	Lot Idn	Feet from the	North/South line	Feet from the	East/West line	County
¹² Dedicated Acres 320 E/2			¹³ Joint or Infill		¹⁴ Consolidation Code		¹⁵ Order No.		

NO ALLOWABLE WILL BE ASSIGNED TO THIS COMPLETION UNTIL ALL INTERESTS HAVE BEEN CONSOLIDATED
OR A NON-STANDARD UNIT HAS BEEN APPROVED BY THE DIVISION



17 OPERATOR CERTIFICATION

I hereby certify that the information contained herein is true and complete to the best of my knowledge and belief

Frances Bond
Signature

Frances Bond
Printed Name
Regulatory Specialist

Title
11-17-05
Date

18 SURVEYOR CERTIFICATION

I hereby certify that the well location shown on this plat was plotted from field notes of actual surveys made by me or under my supervision, and that the same is true and correct to the best of my belief.

Date of Survey 9-20-05

Signature and Seal of Registered Surveyor

Certificate Number

15703

Submit 3 Copies To Appropriate District Office

District I

1625 N. French Dr., Hobbs, NM 88240

District II

1301 W. Grand Ave., Artesia, NM 88210

District III

1000 Rio Brazos Rd., Aztec, NM 87410

District IV

1220 S. St. Francis Dr., Santa Fe, NM 87505

State of New Mexico

Energy, Minerals and Natural Resources

Form C-103

May 27, 2004

OIL CONSERVATION DIVISION

1220 South St. Francis Dr.

Santa Fe, NM 87505

WELL API NO.

30-039- 29701

5. Indicate Type of Lease

STATE ☐

FEE ☐

6. State Oil & Gas Lease No.

SF-078503

7. Lease Name or Unit Agreement Name

San Juan 29-7 Unit

8. Well Number

109N

9. OGRID Number

14538

10. Pool name or Wildcat

Blanco Mesaverde/Basin Dakota

SUNDRY NOTICES AND REPORTS ON WELLS
(DO NOT USE THIS FORM FOR PROPOSALS TO DRILL OR TO DEEPEN OR PLUG BACK TO A DIFFERENT RESERVOIR. USE "APPLICATION FOR PERMIT" (FORM C-101) FOR SUCH PROPOSALS.)

1. Type of Well:

Oil Well ☐

Gas Well ☒

Other

2. Name of Operator

BURLINGTON RESOURCES OIL & GAS COMPANY LP

3. Address of Operator

3401 E. 30TH STREET, FARMINGTON, NM 87402

4. Well Location

Unit Letter P : 1025 feet from the South line and 365 feet from the East line
Section 30 Township 29N Range 7W NMPM County Rio Arriba

11. Elevation (Show whether DR, RKB, RT, GR, etc.)

Pit or Below-grade Tank Application

☐ or Closure ☐

Pit type New Drill Depth to Groundwater >100' Distance from nearest fresh water well

>1000' Distance from nearest surface water

Pit Liner Thickness:

12

mil

Below-Grade Tank:

Volume

bbls;

Construction Material

12. Check Appropriate Box to Indicate Nature of Notice, Report or Other Data

NOTICE OF INTENTION TO:

PERFORM REMEDIAL WORK ☐

PLUG AND ABANDON ☐

TEMPORARILY ABANDON ☐

CHANGE PLANS ☐

PULL OR ALTER CASING ☐

MULTIPLE COMPL ☐

SUBSEQUENT REPORT OF:

REMEDIAL WORK ☐

ALTERING CASING ☐

COMMENCE DRILLING OPNS. ☐

P AND A ☐

CASING/CEMENT JOB ☐

OTHER:

New Drill ☒

OTHER: ☐

13. Describe proposed or completed operations. (Clearly state all pertinent details, and give pertinent dates, including estimated date of starting any proposed work). SEE RULE 1103. For Multiple Completions: Attach wellbore diagram of proposed completion or recompletion.

Burlington Resources proposes to construct a new drilling pit and an associated blow/flare pit. Based on Burlington's interpretation of the Ecosphere's risk ranking criteria, the new drilling pit will be a lined pit as detailed in Burlington's Revised Drilling / Workover Pit Construction / Operation Procedures dated November 11, 2004 on file at the NMOCD office. A portion of the blow/flare pit will be designed to manage fluids and that portion will be lined as per the risk ranking criteria. Burlington Resources anticipates closing these pits according to the Drilling / Workover Pit Closure Procedure dated August 2, 2004 on file at the NMOCD office.

I hereby certify that the information above is true and complete to the best of my knowledge and belief. I further certify that any pit or below-grade tank has been/will be constructed or closed according to NMOCD guidelines ☐, a general permit ☒ or an (attached) alternative OCD-approved plan ☐.

SIGNATURE

Frances Bond

TITLE

Regulatory Specialist

DATE

11/17/2005

Type or print name
For State Use Only

Frances Bond

E-mail address:

fbond@br-inc.com

Telephone No.

505-326-9847

APPROVED BY

[Signature]

TITLE

DEPUTY OIL & GAS INSPECTOR, DIST. IV

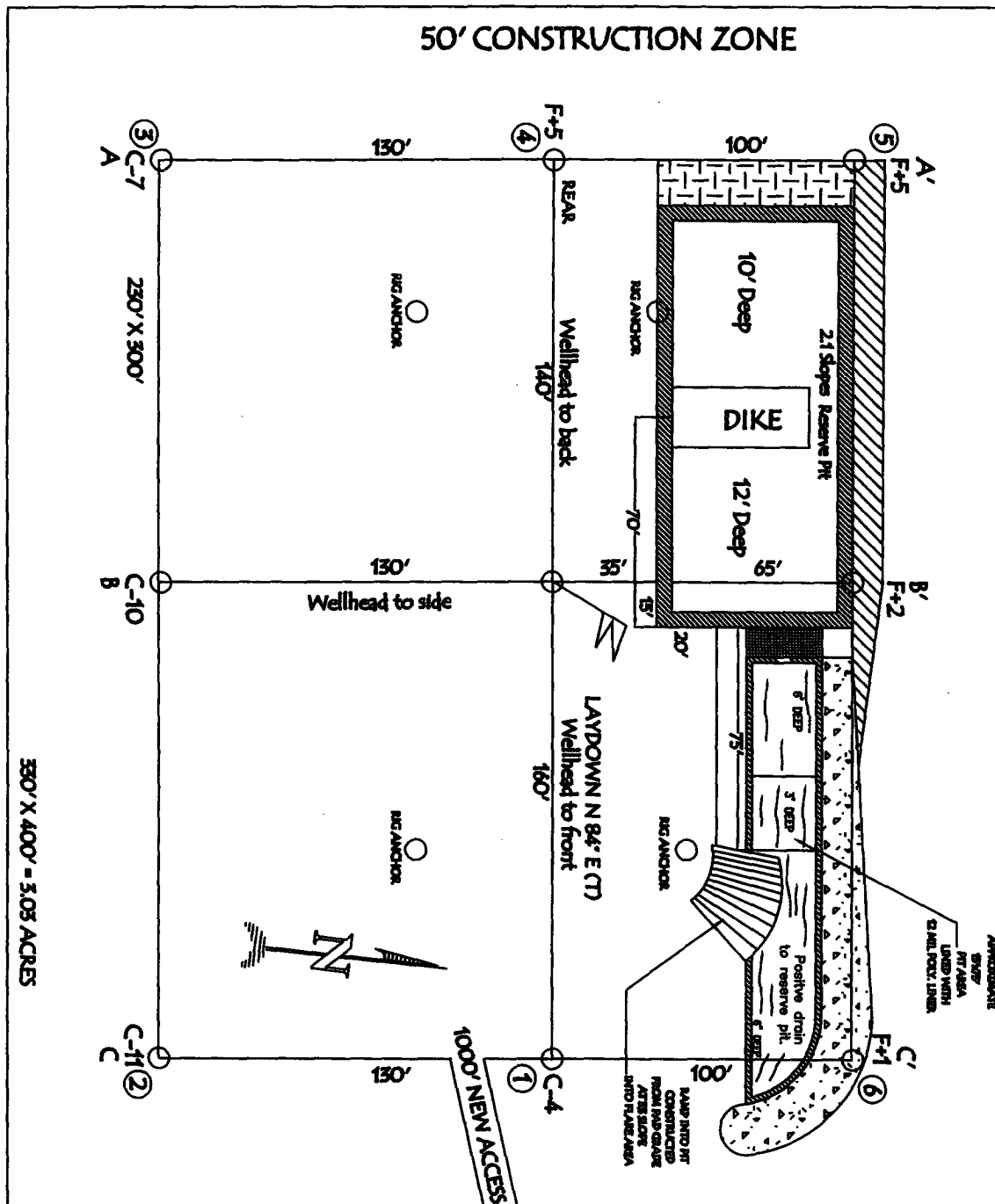
DATE

JAN 05 2006

Conditions of Approval (if any):

BURLINGTON RESOURCES OIL & GAS COMPANY LP
SAN JUAN 29-7 UNIT #109N, 1025' FSL & 365' FEL
SECTION 30, T-29-N, R-7-W, NMPM, RIO ARriba COUNTY, NM
GROUND ELEVATION: 6302', DATE: SEPTEMBER 8, 2005

RESERVE PIT DIKE: TO BE 8' ABOVE DEEP SIDE (OVERFLOW - 5' WIDE AND 1' ABOVE SHALLOW SIDE).



LATITUDE: 36° 41.5559' N LONGITUDE: 107° 36.2360' W NAD27

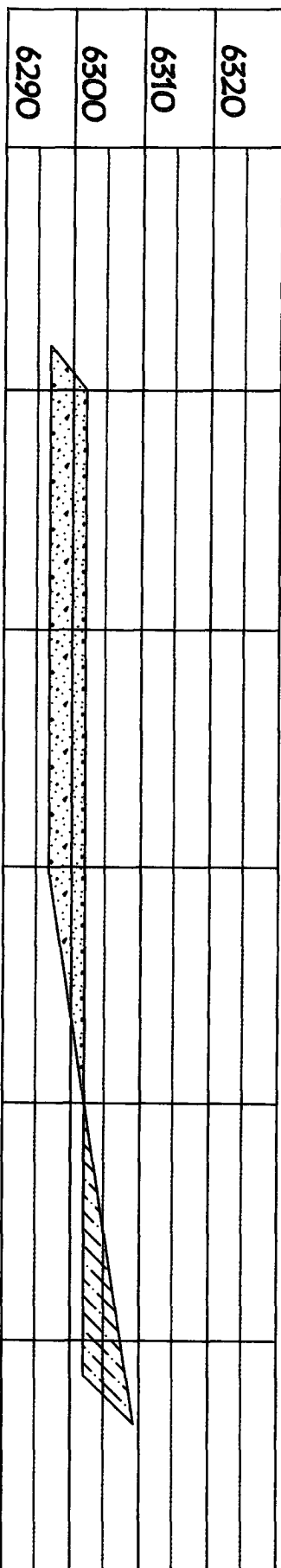
NOTE: VECTOR SURVEYS IS NOT LIABLE FOR UNDERGROUND UTILITIES OR PIPELINES.

CONTRACTOR SHOULD CALL ONE-CALL FOR LOCATION OF ANY MARKED OR UNMARKED BURIED

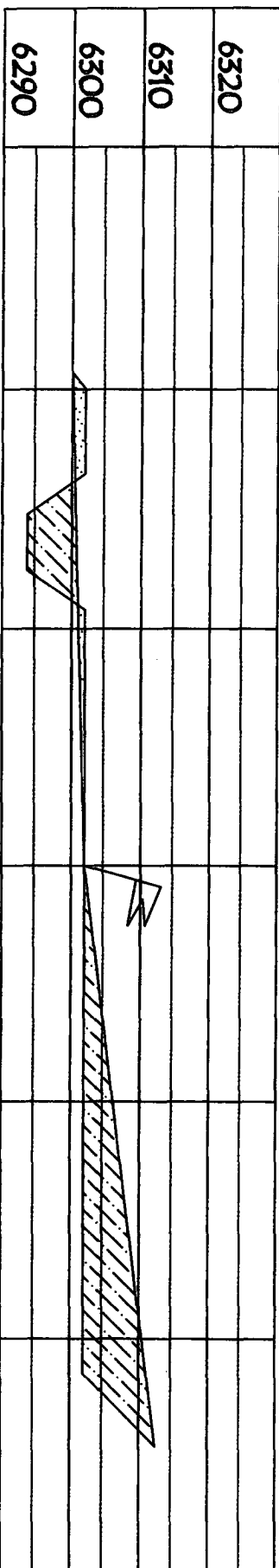
PIPELINES OR CABLES ON WELL PAD AND OR ACCESS ROAD AT LEAST TWO (2) WORKING DAYS PRIOR TO CONSTRUCTION.

BURLINGTON RESOURCES OIL & GAS COMPANY LP
SAN JUAN 29-7 UNIT #109N, 1025' FSL & 365' FEL
SECTION 30, T-29-N, R-7-W, NMPM, RIO ARriba COUNTY, NM
GROUND ELEVATION: 6302', DATE: SEPTEMBER 8, 2005

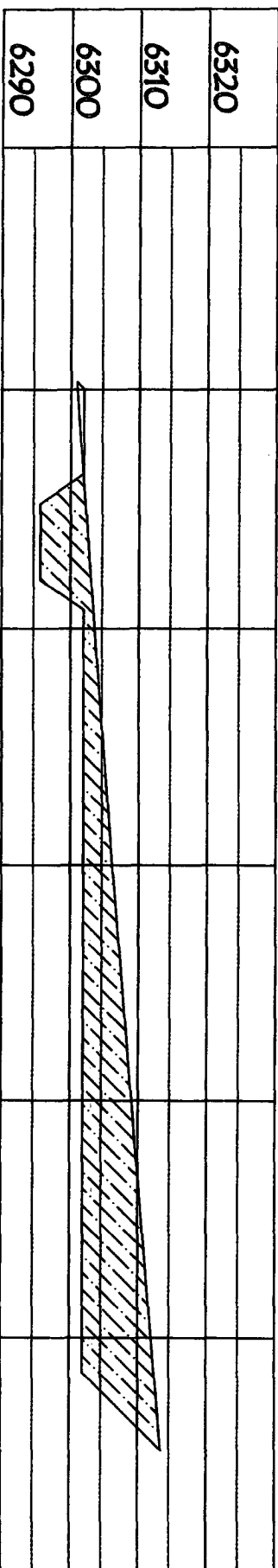
ELEV. A'-A



ELEV. B'-B



ELEV. C'-C



NOTE: VECTOR SURVEYS IS NOT LIABLE FOR UNDERGROUND UTILITIES OR PIPELINES.
 CONTRACTOR SHOULD CALL ONE-CALL FOR LOCATION OF ANY MARKED OR UNMARKED BURIED
 PIPELINES OR CABLES ON WELL PAD AND OR ACCESS ROAD AT LEAST TWO (2) WORKING DAYS PRIOR TO CONSTRUCTION.

OPERATIONS PLAN

Well Name: San Juan 29-7 Unit #109N

Location: 1025' FSL, 365' FEL, Sec 30, T29N, R7W
Rio Arriba County, NM

Latitude 36° 41.5559'N Longitude 107° 36.2360'W

Formation: Blanco Mesaverde/Basin Dakota

Total Depth: 7488'

Logging Program: See San Juan 29-7 Unit Master Operations Plan

Mud Program: See San Juan 29-7 Unit Master Operations Plan

Casing Program (as listed, the equivalent, or better):

Hole Size	Depth Interval	Csg	Wt.	Grade	Cement	
12 1/4	0' -	120	9.625"	32.3#	H-40	113 cu.ft
8 3/4	0' -	3231	7"	20.0#	J-55	722 cu.ft
6 1/4	0' -	7488	4.5"	10.5/11.6#	J-55	579 cu.ft

Tubing Program: See San Juan 29-7 Unit Master Operations Plan

- * The Mesaverde and Dakota formations will be completed and commingled.
- * The east half of Section 30 is dedicated to the Mesaverde and the Dakota formation in this well.
- * Gas is dedicated.


Drilling Engineer

Date 11/15/05

C. HARRADEN/ November 18, 2005 *CH*

BURLINGTON RESOURCES/ San Juan 29-7 Unit #109N APD

STIPULATION/CONDITION OF APPROVAL

This well is located within a 'vulnerable area'. In order to protect the integrity of the alluvium aquifer, a minimum surface csg. depth of 200' is stipulated as a condition of approval for this APD.