

submitted in lieu of Form 3160-5

UNITED STATES
DEPARTMENT OF THE INTERIOR
BUREAU OF LAND MANAGEMENT

Sundry Notices and Reports on Wells

2005 DEC 23 PM 12 27

1. Type of Well
GAS

2. Name of Operator
BURLINGTON
RESOURCES OIL & GAS COMPANY LP

3. Address & Phone No. of Operator

NM 87499 (505) 326-9700

4. Location of Well, Footage, Sec., T, R, M

5. Lease Number

RECEIVED SF-076958

070 FARMINGTON NM
6. If Indian, All. or
Tribe Name

7. Unit Agreement Name

Hare SRC

8. Well Name & Number

#1

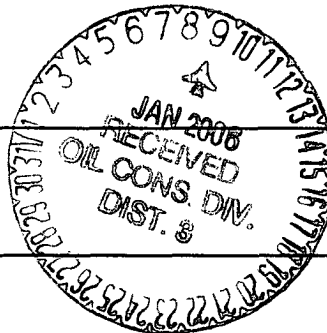
9. API Well No.

30-045-08787

10. Field and Pool

Aztec Pictured Cliffs

11. County and State
San Juan Co., NM



12. CHECK APPROPRIATE BOX TO INDICATE NATURE OF NOTICE, REPORT, OTHER DATA

Type of Submission

Type of Action

☒ Notice of Intent

☐ Abandonment

☐ Change of Plans

☒ Other - PC deepening/restim

☐ Subsequent Report

☐ Recompletion

☐ New Construction

☐ Subsequent Report

☐ Plugging

☐ Non-Routine Fracturing

☐ Final Abandonment

☐ Casing Repair

☐ Water Shut off

☐ Altering Casing

☐ Conversion to Injection

13. Describe Proposed or Completed Operations

Plans are to deepening the PC interval to add additional PC pay on the subject well. Please note the attached procedure we will be following as well as the current and proposed wellbore diagrams.

14. I hereby certify that the foregoing is true and correct.

Signed Patsy Clugston Patsy Clugston Title Sr. Regulatory Specialist Date 12/22/05

(This space for Federal or State Office use)

APPROVED BY Mark Habbert Title PETR ENG Date 12/29/05

CONDITION OF APPROVAL, if any:

Title 18 U.S.C. Section 1001, makes it a crime for any person knowingly and willfully to make any department or agency of the United States any false, fictitious or fraudulent statements or representations as to any matter within its jurisdiction.

CONDITIONS OF APPROVAL
Adhere to previously issued stipulations.

NMOCD

Hare SRC #1 Sundry Procedure

Unit G, Section 3, T29N, R10W

All cement type III (1.39 yield, 14.5 ppg)

1. MIRU completion rig. TOOH with tubing.
2. Set RBP at +/- 2350'. Pressure test casing to 500# for 15 min.
3. Run CBL from 2394' to TOC +200'. Shoot 1 squeeze hole at +/- 1850'. Set cement retainer at +/- 1800'.
4. Squeeze with 165 sx cement below retainer and circulate cement top below Ojo Alamo.
5. Mill out retainers and cement to 2394'.
6. Deepen well to 2550' with 2-7/8" 6.5# J-55 EUE 8rd work string and 4-3/4" tooth bit.
7. Land 2-7/8" 6.5# J-55 EUE 8rd casing at 2550'. Cement with 150 sx cement and circulate to surface.
8. RDMO completion rig.
9. Run GR/CCL from PBTD to surface.
10. Perforate and fracture stimulate Pictured Cliffs formation.
11. Flow back well to clean up.
12. Return well to production as Pictured Cliffs only producer.

Hare SRC #1

1650' FNL , 1650' FEL
Unit G, Section 3, T29N, R10W
San Juan County, NM

LAT: 36 deg 45.41' min

LONG: 107 deg 52.06' min

GL = 5,960'

KB = 5,967'

Current Wellbore Diagram

Surface Casing:

8-5/8" 32.0#
Set @ 120'
TOC @ Surface

120'

Ojo Alamo 1,218'
Kirtland 1,304'
Fruitland 2,205'
Pictured Cliffs 2,398'

Tubing:

1" 1.7#
Set: 2,450'

Production Casing:

5-1/2" 15.5#
Set: 2,394'
TOC: 1883' (calc 75%)

TOC @ 1883'

2,394'

Existing Stimulation:

Pictured Cliffs
2409'-2492'
Shot with 200 qts nitro glycerine
15,000# sand, 16,000 gal diesel restim

PBTD = 2,494'
TD = 2,495'

Hare SRC #1

1650' FNL , 1650' FEL
Unit G, Section 3, T29N, R10W
San Juan County, NM

LAT: 36 deg 45.41' min

LONG: 107 deg 52.06' min

GL = 5,960'

KB = 5,967'

Proposed Wellbore Diagram

Surface Casing:

8-5/8" 32.0#
Set @ 120'
TOC @ Surface

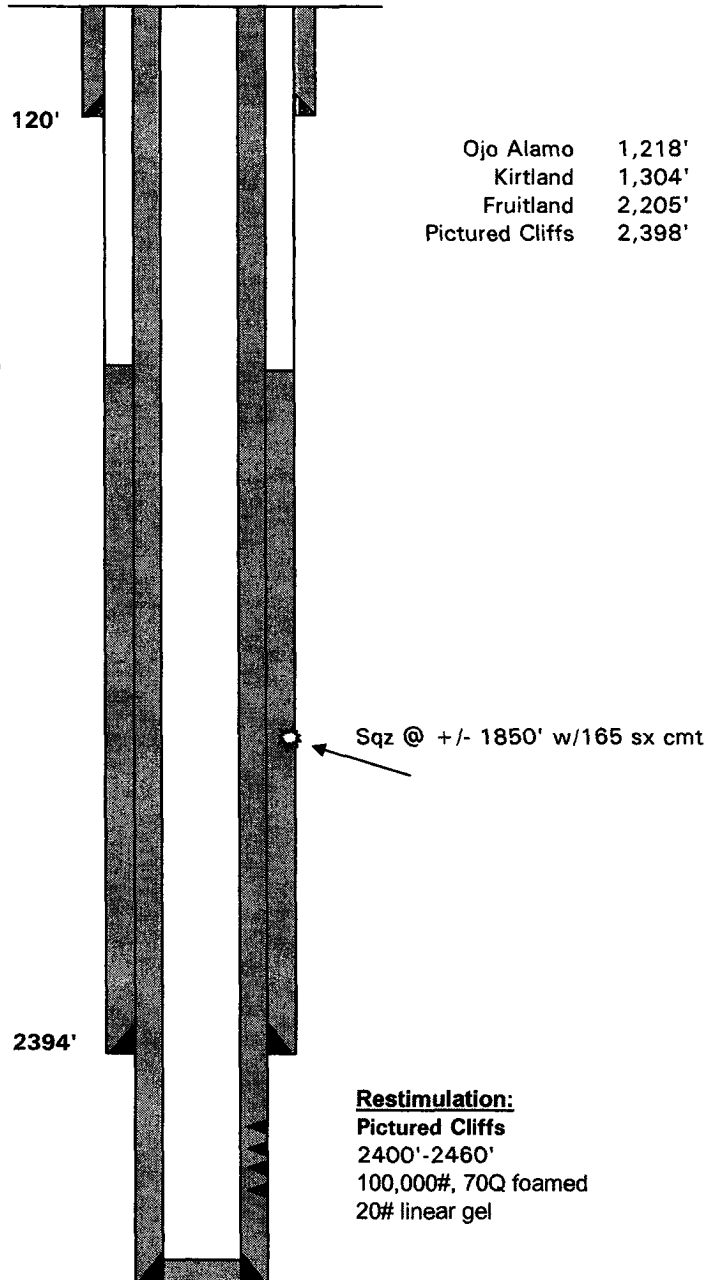
Intermediate Casing:

5-1/2" 15.5#
Set @ 2394'
TOC @ 1304' (calc TOC below Ojo)

TOC @ 1304'

Production Casing:

2-7/8" 6.5#
Set: 2,550'
TOC: Surface



Restimulation:

Pictured Cliffs
2400'-2460'
100,000#, 70Q foamed
20# linear gel

PBTD = 2,550'
TD = 2,550'