

2005 DEC 2 PM 2:14

FORM APPROVED  
OMB No. 1004-0136  
Expires January 31, 2004

UNITED STATES  
DEPARTMENT OF THE INTERIOR  
BUREAU OF LAND MANAGEMENT

RECEIVED  
070 FARMINGTON  
Lease Serial No.  
SF078925

APPLICATION FOR PERMIT TO DRILL OR REENTER

1a. Type of Work: <input checked="" type="checkbox"/> DRILL <input type="checkbox"/> REENTER			6. If Indian, Allottee or Tribe Name		
1b. Type of Well: <input type="checkbox"/> Oil Well <input checked="" type="checkbox"/> Gas Well <input type="checkbox"/> Other <input type="checkbox"/> Single Zone <input type="checkbox"/> Multiple Zone			7. If Unit or CA Agreement, Name and No. Canyon Largo Unit 32660		
2. Name of Operator Huntington Energy, L.L.C. 208706			8. Lease Name and Well No. Canyon Largo Unit 477		
3a. Address 6301 Waterford Blvd., Suite 400 Oklahoma City, OK 73118			9. API Well No. 30-039-29715		
3b. Phone No. (include area code) (405) 840-9876			10. Field and Pool, or Exploratory Basin Dakota 71599		
4. Location of Well (Report location clearly and in accordance with any State requirements.) At surface NENE 1060' FNL & 860' FEL, Lot A At proposed prod. zone			11. Sec., T., R., M., or Blk. and Survey or Area A Sec 27, T24N-R6W		
14. Distance in miles and direction from nearest town or post office* 35 miles SE from Blanco, NM			12. County or Parish Rio Arriba		13. State NM
15. Distance from proposed* location to nearest property or lease line, ft. (Also to nearest drig. unit line, if any)	16. No. of Acres in lease 2240	17. Spacing Unit dedicated to this well 320 E/2			
18. Distance from proposed location* to nearest well, drilling, completed, applied for, on this lease, ft.	19. Proposed Depth 7000'	20. BLM/BIA Bond No. on file NMB000076			
21. Elevations (Show whether DF, KDB, RT, GL, etc.) 6814' GL	22. Approximate date work will start*	23. Estimated duration			

24. Attachments

The following, completed in accordance with the requirements of Onshore Oil and Gas Order No.1, shall be attached to this form:

- |                                                                                                                                                 |                                                                                                    |
|-------------------------------------------------------------------------------------------------------------------------------------------------|----------------------------------------------------------------------------------------------------|
| 1. Well plat certified by a registered surveyor.                                                                                                | 4. Bond to cover the operations unless covered by an existing bond on file (see Item 20 above).    |
| 2. A Drilling Plan.                                                                                                                             | 5. Operator certification.                                                                         |
| 3. A Surface Use Plan (if the location is on National Forest System Lands, the SUPO shall be filed with the appropriate Forest Service Office). | 6. Such other site specific information and/or plans as may be required by the authorized officer. |

25. Signature <i>Catherine Smith</i>	Name (Printed/Typed) Catherine Smith	Date 11/30/05
Title Land Associate		
Approved by (Signature) <i>[Signature]</i>	Name (Printed/Typed)	Date 1/17/06
Title Office Acting ARM		

Application approval does not warrant or certify the the applicant holds legal or equitable title to those rights in the subject lease which would entitle the applicant to conduct operations thereon.

Conditions of approval, if any, are attached.

Title 18 U.S.C. Section 1001 and Title 43 U.S.C. Section 1212, make it a crime for any person knowingly and willfully to make to any department or agency of the United States any false, fictitious or fraudulent statements or representations as to any matter within its jurisdiction.

\*(Instructions on reverse)

DRILLING OPERATIONS AUTHORIZED ARE  
SUBJECT TO COMPLIANCE WITH ATTACHED  
FEDERAL REQUIREMENTS.

This action is subject to technical and  
procedural review pursuant to 43 CFR 3165.3  
and appeal pursuant to 43 CFR 3165.4

NMOCD

DISTRICT I  
P.O. Box 1980, Hobbs, N.M. 88241-1980

DISTRICT II  
1301 W. Grand Avenue, Artesia, N.M. 88210

DISTRICT III  
1000 Rio Brazos Rd., Aztec, N.M. 87410

DISTRICT IV  
1220 South St. Francis Dr., Santa Fe, NM 87505

State of New Mexico  
Energy, Minerals & Natural Resources Department

OIL CONSERVATION DIVISION

1220 South St. Francis Dr.  
Santa Fe, NM 87504-2088

Form C-11  
Revised June 10, 20  
Instructions on b  
Submit to Appropriate District O  
State Lease - 4 Copi  
Fee Lease - 3 Copi

☐ AMENDED REPORT

WELL LOCATION AND ACREAGE DEDICATION PLAT

*API Number <b>30-039-29715</b>		*Pool Code <b>71599</b>	*Pool Name <b>Basin Dakota</b>
*Property Code <b>6886 32660</b>	*Property Name <b>CANYON LARGO UNIT</b>		*Well Number <b>477</b>
*GRID No. <b>208706</b>	*Operator Name <b>Huntington Energy, L.L.C.</b> <b>BURLINGTON RESOURCES OIL AND GAS COMPANY LP.</b>		*Elevation <b>6814'</b>

<sup>10</sup> Surface Location

UL or lot no.	Section	Township	Range	Lot Idn	Feet from the	North/South line	Feet from the	East/West line	County
A	27	24-N	6-W		1060'	NORTH	860'	EAST	RIO ARRI.

<sup>11</sup> Bottom Hole Location If Different From Surface

UL or lot no.	Section	Township	Range	Lot Idn	Feet from the	North/South line	Feet from the	East/West line	County

*Dedicated Acres <b>DK-E/320</b>	*Joint or Infill	*Consolidation Code	*Order No.
-------------------------------------	------------------	---------------------	------------

NO ALLOWABLE WILL BE ASSIGNED TO THIS COMPLETION UNTIL ALL INTERESTS HAVE BEEN CONSOLIDATED  
OR A NON-STANDARD UNIT HAS BEEN APPROVED BY THE DIVISION

16	FD 3 1/4" B.L.M. BC 1964 S 87-58-09 W 2660.69' (M) LAT: 36°17.2873' N. (NAD 27) LONG: 107°26.9472' W. (NAD 27)	1060'	FD 3 1/4" B.L.M. BC 1964
		860'	
		S 00-08-25 W 2627.79' (M)	
	27		FD 3 1/4" B.L.M. BC 1964

17 OPERATOR CERTIFICATION

I hereby certify that the information contained here is true and complete to the best of my knowledge and belief.

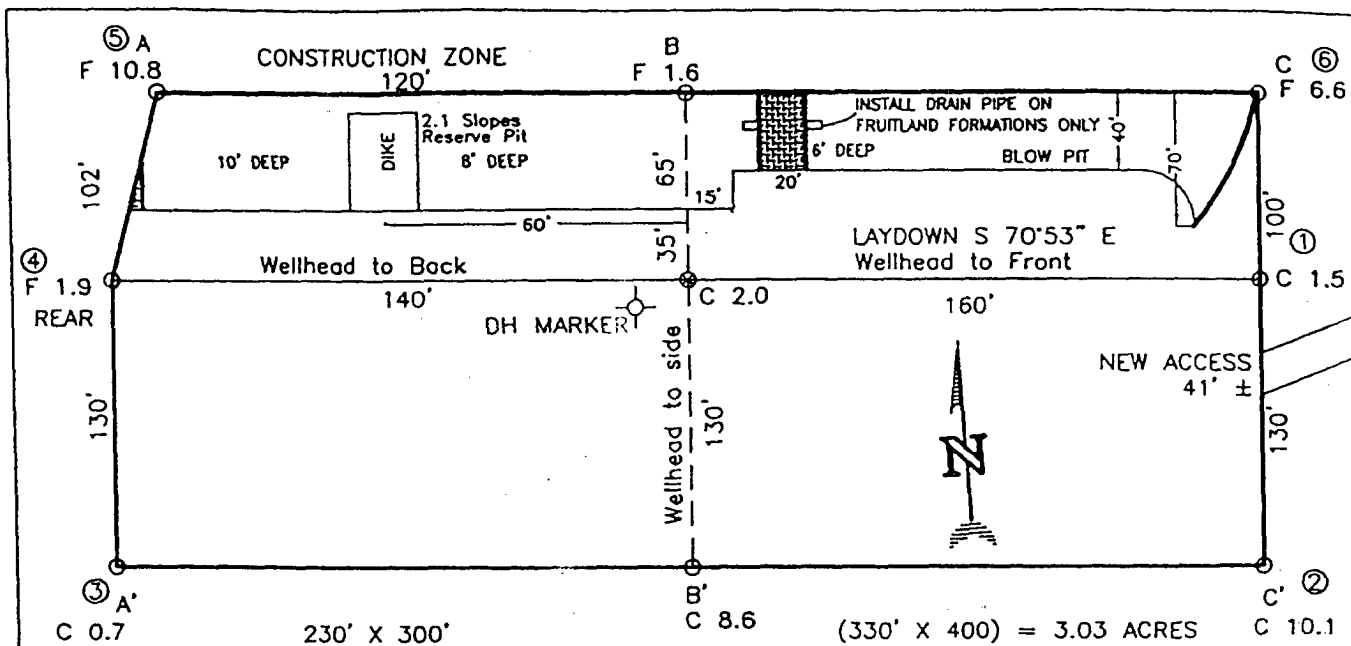
*Catherine Smith*  
Signature  
Catherine Smith  
Printed Name  
Land Associate  
Title  
9/23/05  
Date

18 SURVEYOR CERTIFICATION

I hereby certify that the well location shown on this was plotted from field notes of actual surveys made by me or under my supervision, and that the same is true and correct to the best of my belief.

MAY 2009  
Date  
JOHN A. VUKONICH  
NEW MEXICO  
REGISTERED PROFESSIONAL SURVEYOR  
14831  
Signature  
Certificate Number

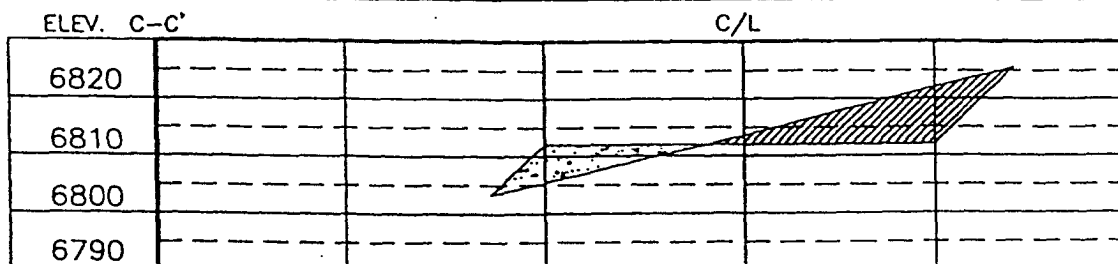
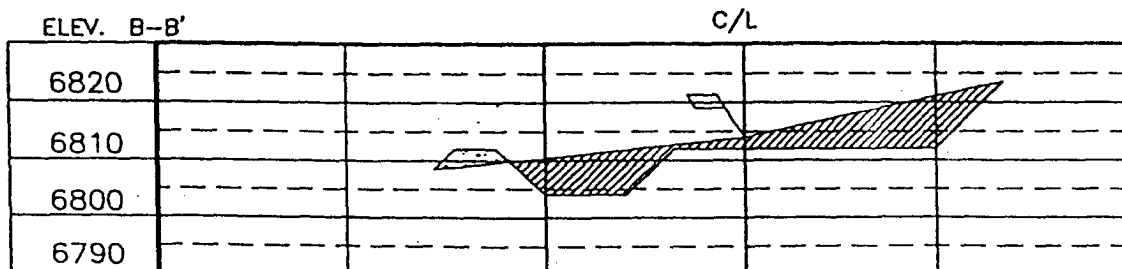
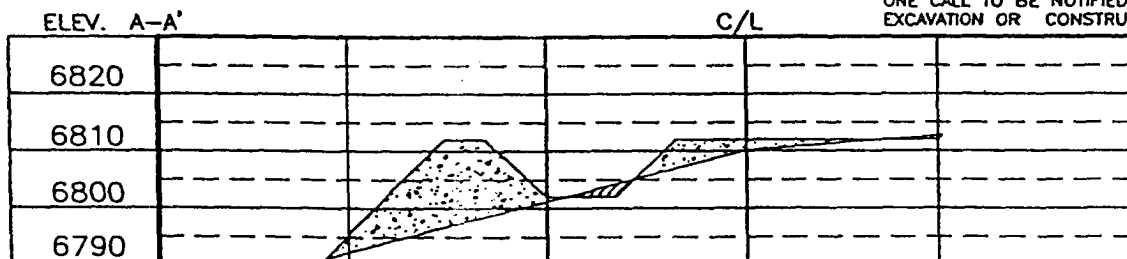
BURLINGTON RESOURCES OIL AND GAS COMPANY LP/HUNTINGTON ENERGY, LLC  
 CANYON LARGO UNIT No. 477, 1060 FNL 860 FEL  
 SECTION 27, T-27-N, R-6-W, N.M.P.M., RIO ARRIBA COUNTY, NEW MEXICO  
 GROUND ELEVATION: 6814, DATE: MAY 24, 2005



RESERVE PIT DIKE: TO BE 8' ABOVE DEEP SIDE (OVERFLOW - 3' WIDE AND 1' ABOVE SHALLOW SIDE).  
 BLOW PIT: OVERFLOW PIPE HALFWAY BETWEEN TOP AND BOTTOM AND TO EXTEND OVER PLASTIC LINER AND INTO BLOW PIT.

NOTE:

DAGGETT ENTERPRISES, INC. IS NOT LIABLE FOR UNDERGROUND UTILITIES OR PIPELINES. NEW MEXICO ONE CALL TO BE NOTIFIED 48 HOURS PRIOR TO EXCAVATION OR CONSTRUCTION.



NOTE: CONTRACTOR SHOULD CALL ONE-CALL FOR LOCATION OF ANY MARKED OR UNMARKED BURIED PIPELINES OR CABLES ON WELL PAD AND OR ACCESS ROAD AT LEAST TWO (2) WORKING DAYS PRIOR TO CONSTRUCTION.

REVISION: DATE: REVISED BY:

Daggett Enterprises, Inc.  
 Surveying and Oil Field Services  
 P. O. Box 15068 • Farmington, NM 87401  
 Phone (505) 326-1772 • Fax (505) 326-6019  
 NEW MEXICO P.L.S. No. 14831  
 DRAWN BY: J.C.

## OPERATIONS PLAN

Well Name: Canyon Largo Unit #477  
Location: 1060' FNL, 860' FEL, NE/4 Sec 27, T-24-N, R-6-W NMPM  
Rio Arriba County, NM  
Formation: Basin Dakota  
Elevation: 6814' GL

<u>Formation Tops:</u>	<u>Top</u>	<u>Bottom</u>	<u>RMSL</u>
Ojo Alamo	1682'	1937'	5148
Kirkland	1937'	2018'	4893
Fruitland	2018'	2256'	4812
Pictured Cliffs	2256'	2363'	4574
Lewis Shale	2363'	2601'	4467
Huerfanito	2601'	3782'	4229
Cliff House	3782'	3828'	3048
Menefee	3828'	4453'	3002
Point Lookout	4453'	4644'	2377
Mancos	4644'	5524'	2186
Gallup (Niobrara)	5524'	6467'	1306
Greenhorn	6467'	6533'	363
Graneros	6533'	6570'	297
Dakota	6570'	6895'	260
Morrison	6895'	7000'	-65
TD	7000'		

### Logging Program:

Open hole logs – Platform Express  
Cased hole logs – CBL/GR – TD to 5200'  
Cores & DST's – none  
Mud log – 2800' to TD

### Mud Program:

<u>Interval</u>	<u>Type</u>	<u>Weight</u>	<u>Vis.</u>	<u>Fluid Loss</u>
0 – 320'	Spud	8.4-8.9	40-50	no control
320 – 7000'	LSND	8.4-9.0	40-60	8-12

Pit levels will be visually monitored to detect gain or loss of fluid control.

### Casing Program:

<u>Hole Size</u>	<u>Depth Interval</u>	<u>Csg. Size</u>	<u>Wt.</u>	<u>Grade</u>
12 1/4"	0' – 320'	8 5/8"	24.0#	WC-50
7 7/8"	0' – 7000'	4 1/2"	11.6#	N-80

### Tubing Program:

0' – 7000'	2 3/8"	4.7#	J-55
------------	--------	------	------

### BOP Specifications, Wellhead and Tests:

#### Surface to TD –

11" 3000 psi minimum double gate BOP stack (Reference Figure #1). After nipple-up prior to drilling out surface casing, ~~rams~~ and casing will be tested to 600 psi for 30 minutes. *3000*

2" nominal, 3000 psi minimum choke manifold (Reference Figure #3).

Completion Operations:

6" 3000 psi double gate BOP stack (Reference Figure #2). After nipple-up prior to completion, pipe rams and casing top will be tested to 3000 psi for 15 minutes.

Surface to Total Depth:

2" nominal, 3000 psi minimum choke manifold (Reference Figure #3).

Wellhead:

8 5/8" x 4 1/2" x 1 1/2" x 1 1/2" x 3000 psi tree assembly.

General:

- Pipe rams will be actuated once each day and blind rams will be actuated once each trip to test proper functioning.
- An upper Kelly cock valve with handle available and drill string valves to fit each drill string will be available on the rig floors at all times.
- A BOP pit level drill will be conducted weekly for each drilling crew.
- All of the BOP tests and drills will be recorded in the daily drilling reports.
- Blind and pipe rams will be equipped with extension hand wheels.

Cementing:

8 5/8" surface casing –

Cement to surface w/265 sx Class "B" cement w/3% calcium chloride and 1/4#/sx cellophane flakes (312 cu. ft. of slurry, 200% excess to circulate to surface).

WOC 8 hr. prior to drilling out surface casing. Test casing to 600 psi for 30 minutes.

Saw tooth guide shoe on bottom. Bowspring centralizers will be run in accordance with Onshore Order #2.

Production Casing – 4 1/2"

Lead with 700 sx 65/35 Standard Poz w/6% gel, 1/4# Flocele, 10# Gilsonite, 3/10% Halad 9, 1/10% HR5 (1.96 yld). Tail w/900 sx 50/50 Standard Poz w/35 Gel, 9/10% Halad9, 2/10% CFR 3, 5# Gilsonite, 1/4# Flocele (1.47 yld).

Alternate Two-stage cement job as follows:

First Stage: Cement to circulate to stage tool @ 5066'. Lead with 700 sx Class "G" 50/50 poz (13#, 1.47 yd) w/3% gel, 0.25 pps Celloflake, 5 pps Gilsonite, 0.25 pps Fluid loss, 0.15% dispersant, 0.1% retarder. WOC 4 hours prior to pumping second stage. (Slurry volume: 1029 cu. ft. Excess slurry: 50%). DV Tool at 5000 ft.

Second Stage: Cement to circulate to surface. Cement with 700 sx Class "G" (12#, 2.9yd) TXI Liteweight cement w/2.5% sodium metasilicate, 2% calcium chloride, 10 pps Gilsonite, 0.5 pps Celloflake, 0.2% antifoam. WOC a minimum of 18 hours prior to cleanout. (Slurry volume: 1914 cu. ft. Excess slurry: 50%). Tail w/50 sx Class "B" w/1/4# Flocele (15.6#, 1.18 yd) (Slurry 59 cu. ft., Excess 50%).

Float shoe on bottom. Three centralizers run every other joint above shoe. Thirty-five centralizers - one every 4<sup>th</sup> joint to the base of the Ojo Alamo @ 2448'. Two turbolizing type centralizers – one below and one into the base of the Ojo Alamo @ 2448'. Standard centralizers thereafter every fourth joint up to the base of the surface pipe.

Note: If open hole logs are run, cement volumes will be based on 25% excess over caliper volumes.

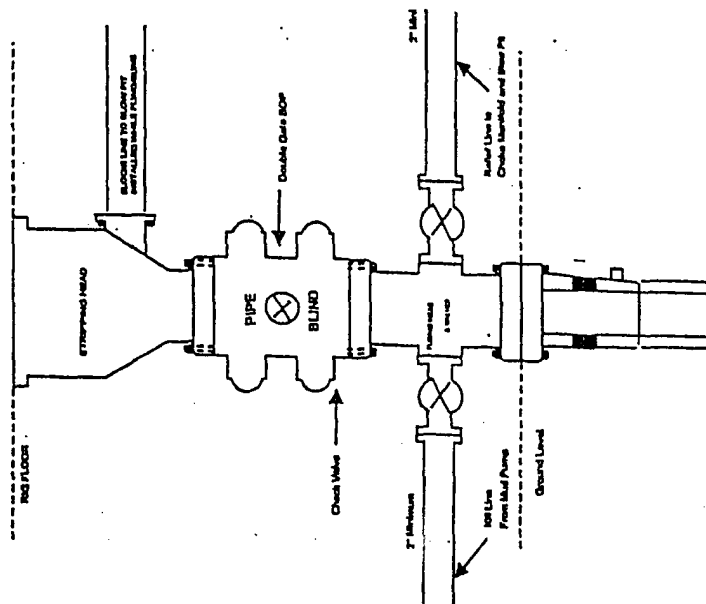
Additional Information:

The Dakota formations will be completed.

- No abnormal temperatures or hazards are anticipated.
- Sufficient LCM will be added to the mud system to maintain well control, if lost circulation is encountered below the top of the Pictured Cliffs.
- The east half of the Section 27 is dedicated to this well.
- This gas is dedicated.
- Anticipated pore pressure

Fruitland Coal	300 psi
Pictured Cliffs	500 psi
Mesa Verde	700 psi
Dakota	3000 psi

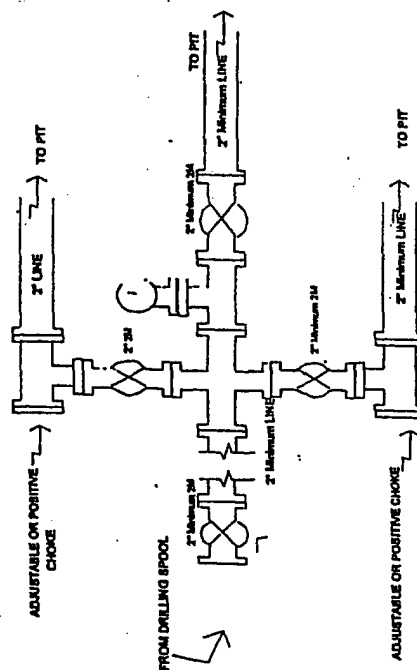
## Completion/Workover Rig BOP Configuration 2,000 psi System



Minimum BOP installation for all Completion/Workover Operations. 7-1/16" bore, 2000 psi minimum working pressure double gate BOP to be equipped with blind and pipe rams. A stripping head to be installed on the top of the BOP. All BOP equipment is 2000 psi working pressure or greater excluding 500 psi stripping head.

Figure #2

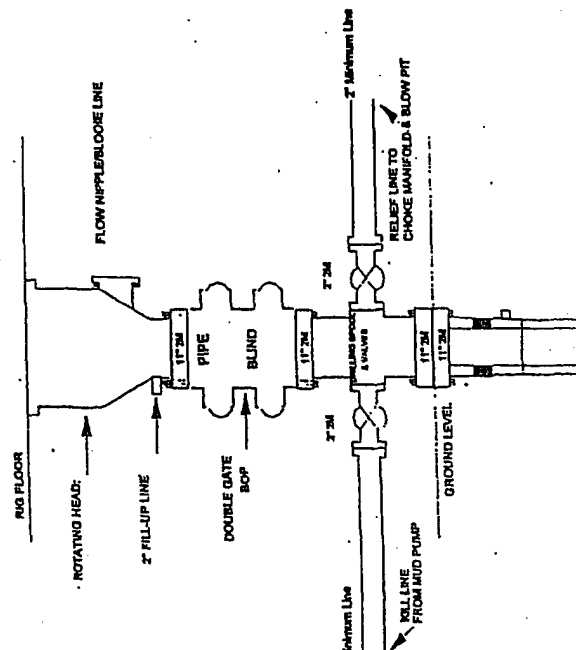
## Drilling Rig Choke Manifold Configuration 2000 psi System



Choke manifold installation from Surface Casing Point to Total Depth. 2,000psi working pressure equipment with two chokes.

Figure #3

## Drilling Rig 2000 psi System



BOP installation from Surface Casing Point to Total Depth. 11" Bore 10" Nominal, 2000 psi working pressure double gate BOP to be equipped with blind rams and pipe rams. A 600 psi stripping head on top of ram preventers. All BOP equipment is 2,000 psi working pressure.

Figure #1