

District I

1625 N. French Dr., Hobbs, NM 88240

District II

1301 W. Grand Avenue, Artesia, NM 88210

District III

1000 Rio Brazos Rd., Aztec, NM 87410

District IV

1220 S. St. Francis Dr., Santa Fe, NM 87505

State of New Mexico
Energy, Minerals & Natural Resources Department
OIL CONSERVATION DIVISION
1220 South St. Francis Dr.
Santa Fe, NM 87505

Form C-102

Revised June 10, 2003

Submit to Appropriate District Office

State Lease - 4 Copies

Fee Lease - 3 Copies

☐ AMENDED REPORT**WELL LOCATION AND ACREAGE DEDICATION PLAT**

| | | | | | |
|--|--|--|--|---|--|
| ¹ API Number 30-045-33399 | | ² Pool Code 71629 | | ³ Pool Name Basin Fruitland coal | |
| ⁴ Property Code 34194 | | ⁵ Property Name FEDERAL 29-9-1 | | | ⁶ Well Number 2S |
| ⁷ OGRID No. 162928 | | ⁸ Operator Name ENERGEN RESOURCES CORPORATION | | | ⁹ Elevation 6294' |

10 Surface Location

| UL or lot no. | Section | Township | Range | Lot Idn | Feet from the | North/South line | Feet from the | East/West line | County |
|---------------|----------|------------|-----------|---------|---------------|------------------|---------------|----------------|-----------------|
| D | 1 | 29N | 9W | | 1240 | NORTH | 735 | WEST | SAN JUAN |

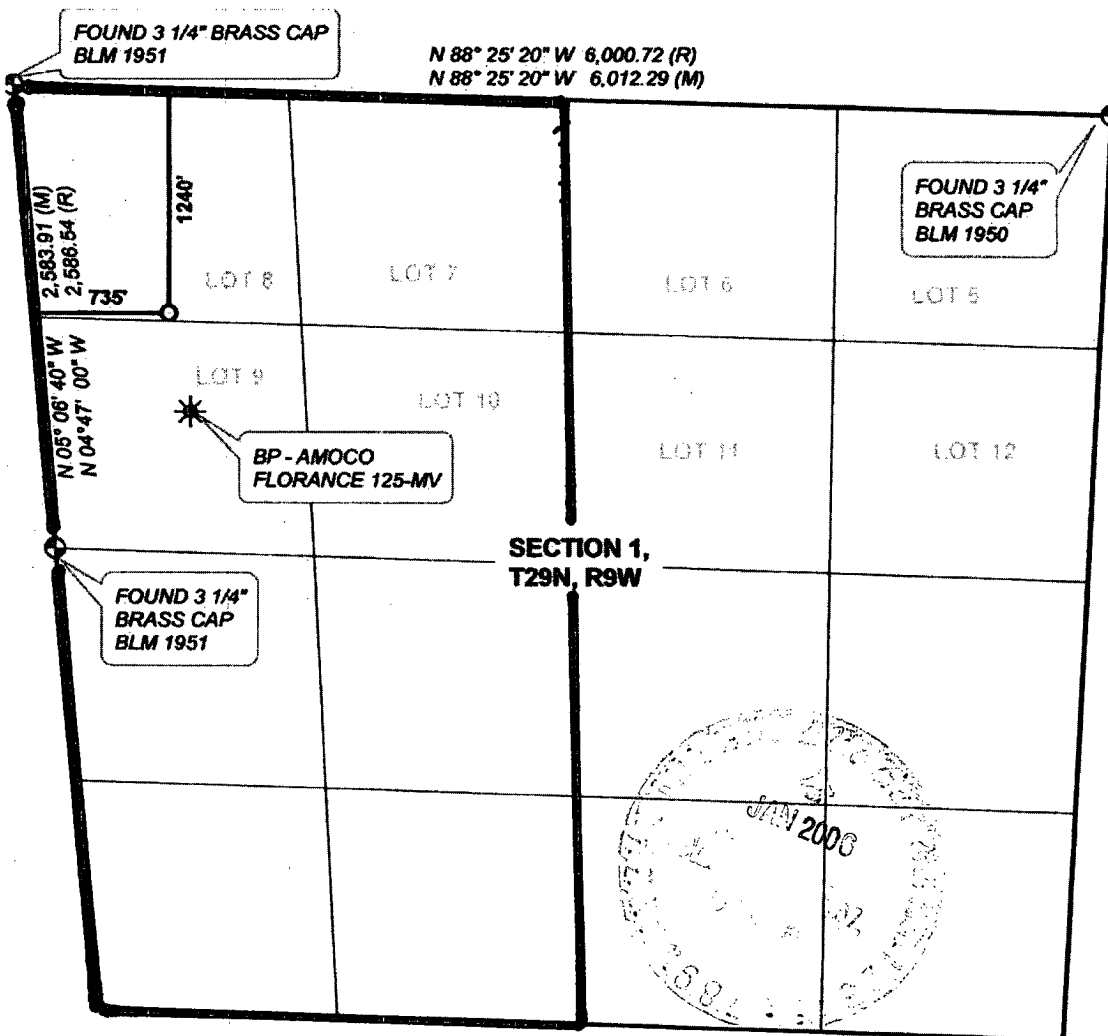
11 Bottom Hole Location If Different From Surface

| UL or lot no. | Section | Township | Range | Lot Idn | Feet from the | North/South line | Feet from the | East/West line | County |
|---------------|---------|----------|-------|---------|---------------|------------------|---------------|----------------|--------|
| | | | | | | | | | |

| | | | |
|---|-------------------------------|----------------------------------|-------------------------|
| ¹² Dedicated Acres w/2331+99AC | ¹³ Joint or Infill | ¹⁴ Consolidation Code | ¹⁵ Order No. |
| | | | |

NO ALLOWABLE WILL BE ASSIGNED TO THIS COMPLETION UNTIL ALL INTERESTS HAVE BEEN CONSOLIDATED OR A NON-STANDARD UNIT HAS BEEN APPROVED BY THE DIVISION

16



| | |
|---|--|
| 17 OPERATOR CERTIFICATION | |
| I hereby certify that the information contained herein is true and complete to the best of my knowledge and belief. | |
| Signature: <i>Nathan Smith</i> | |
| Printed Name: Nathan Smith | |
| Title and E-mail Address: Drilling Engineer | |
| Date: 1/20/06 | |
| 18 SURVEYOR CERTIFICATION | |
| I hereby certify that the well location shown on this plat was plotted from field notes of actual surveys made by me or under my supervision, and that the same is true and correct to the best of my belief. | |
| Date of Survey: 8-11-05 | |
| Signature and Seal of Professional Surveyor: <i>David A. Johnson</i> | |
| | |
| NM LS 14827 | |
| Certificate Number | |