

submitted in lieu of Form 3160-5

UNITED STATES  
DEPARTMENT OF THE INTERIOR  
BUREAU OF LAND MANAGEMENT

Sundry Notices and Reports on Wells

2006 JAN 10 AM 7 57

RECEIVED Lease Number

NMNM-2995

OTO FARMINGTON

1. Type of Well  
GAS

6. If Indian, All. or  
Tribe Name

2. Name of Operator

**BURLINGTON**

RESOURCES OIL & GAS COMPANY

7. Unit Agreement Name

3. Address & Phone No. of Operator

PO Box 4289, Farmington, NM 87499 (505) 326-9700

8. Well Name & Number

Burnt Mesa #2B

9. API Well No.

30-045-33376

4. Location of Well, Footage, Sec., T, R, M

2040' FSL, 925' FWL, Sec. 26, T32N, R07W, NMPM

10. Field and Pool

Blanco Mesaverde/Basin Dakota

11. County and State

San Juan Co, NM

12. CHECK APPROPRIATE BOX TO INDICATE NATURE OF NOTICE, REPORT, OTHER DATA

Type of Submission

Type of Action

☒ Notice of Intent

☐ Abandonment

☐ Change of Plans

☐ Subsequent Report

☐ Recompletion

☐ New Construction

☐ Final Abandonment

☐ Plugging Back

☐ Non-Routine Fracturing

☐ Casing Repair

☐ Water Shut off

☐ Altering Casing

☐ Conversion to Injection

☒ Change of Location

13. Describe Proposed or Completed Operations

It is intended to change the location on the above referenced well from 250' FSL, 240' FWL to 2040' FSL, 925' FWL in Section 26, T32N, R7W, as shown on the attached documents.

14. I hereby certify that the foregoing is true and correct.

Signed Joni Clark Title Regulatory Specialist Date 1/9/06

(This space for Federal or State Office use)

APPROVED BY Hayden Title Branch Chief Date 1/23/06

CONDITION OF APPROVAL, if any:

Title 18 U.S.C. Section 1001, makes it a crime for any person knowingly and willfully to make to any department or agency of the United States any false, fictitious or fraudulent statements or representations as to any matter within its jurisdiction.



NMOC

DISTRICT I  
1825 N. French Dr., Hobbs, N.M. 88240

State of New Mexico  
Energy, Minerals & Natural Resources Department

Form C-102  
Revised August 15, 2000

DISTRICT II  
811 South First, Artesia, N.M. 88210

DISTRICT III  
1000 Rio Brazos Rd., Aztec, N.M. 87410

DISTRICT IV  
2040 South Pacheco, Santa Fe, NM 87505

OIL CONSERVATION DIVISION

2040 South Pacheco  
Santa Fe, NM 87505

Submit to Appropriate District Office  
State Lease - 4 Copies  
Fee Lease - 3 Copies

RECEIVED  
070 FARMINGTON NM

☐ AMENDED REPORT

WELL LOCATION AND ACREAGE DEDICATION PLAT

|   |   |   |
|---|---|---|
| <sup>1</sup> API Number<br>30-045-33376 | <sup>2</sup> Pool Code<br>72319/71599                                     | <sup>3</sup> Pool Name<br>Blanco Mesaverde/Basin Dakota |
| <sup>4</sup> Property Code<br>28486     | <sup>5</sup> Property Name<br>BURNT MESA                                  | <sup>6</sup> Well Number<br>2B                          |
| <sup>7</sup> OGHD No.<br>14538          | <sup>8</sup> Operator Name<br>BURLINGTON RESOURCES OIL AND GAS COMPANY LP | <sup>9</sup> Elevation<br>6645'                         |

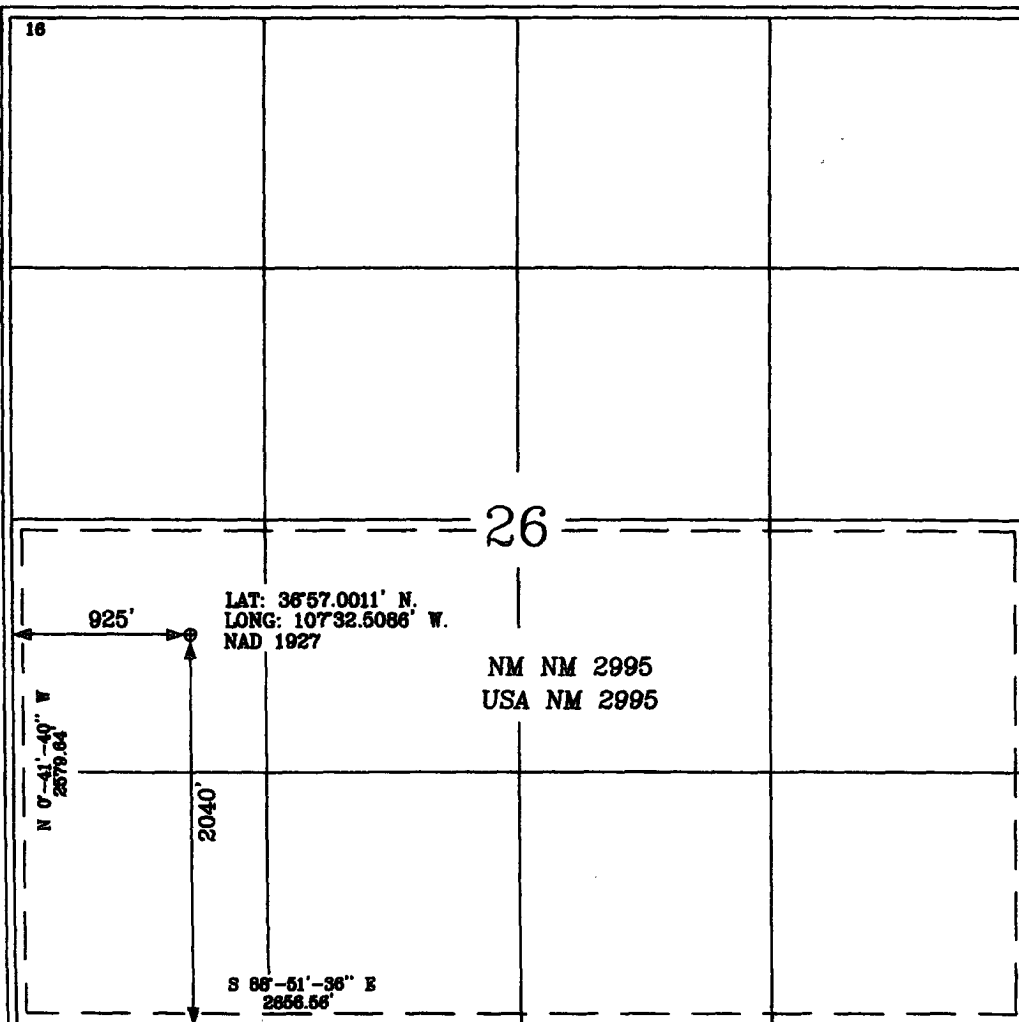
<sup>10</sup> Surface Location

|                    |               |                  |              |         |                        |                           |                       |                        |                    |
|--------------------|---------------|------------------|--------------|---------|------------------------|---------------------------|-----------------------|------------------------|--------------------|
| UL or lot no.<br>L | Section<br>26 | Township<br>32-N | Range<br>7-W | Lot Idn | Feet from the<br>2040' | North/South line<br>SOUTH | Feet from the<br>925' | East/West line<br>WEST | County<br>SAN JUAN |
|--------------------|---------------|------------------|--------------|---------|------------------------|---------------------------|-----------------------|------------------------|--------------------|

<sup>11</sup> Bottom Hole Location If Different From Surface


|   |         |                               |       |                                  |               |                         |               |                |        |
|---|---------|-------------------------------|-------|----------------------------------|---------------|-------------------------|---------------|----------------|--------|
| UL or lot no.                                     | Section | Township                      | Range | Lot Idn                          | Feet from the | North/South line        | Feet from the | East/West line | County |
| <sup>12</sup> Dedicated Acres<br>S/2 320 ac MV/DK |         | <sup>13</sup> Joint or Infill |       | <sup>14</sup> Consolidation Code |               | <sup>15</sup> Order No. |               |                |        |

NO ALLOWABLE WILL BE ASSIGNED TO THIS COMPLETION UNTIL ALL INTERESTS HAVE BEEN CONSOLIDATED  
OR A NON-STANDARD UNIT HAS BEEN APPROVED BY THE DIVISION



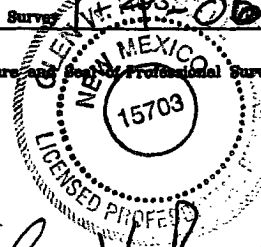
17 OPERATOR CERTIFICATION

I hereby certify that the information contained herein is true and complete to the best of my knowledge and belief

  
Signature  
Joni Clark  
Printed Name  
Sr. Regulatory Specialist  
Title  
1/9/06  
Date

18 SURVEYOR CERTIFICATION

I hereby certify that the well location shown on this plat was plotted from field notes of actual surveys made by me or under my supervision, and that the same is true and correct to the best of my belief.

Date of Survey: 1-9-06  
Signature and Seal of Professional Surveyor:  
  
Certificate Number 15703

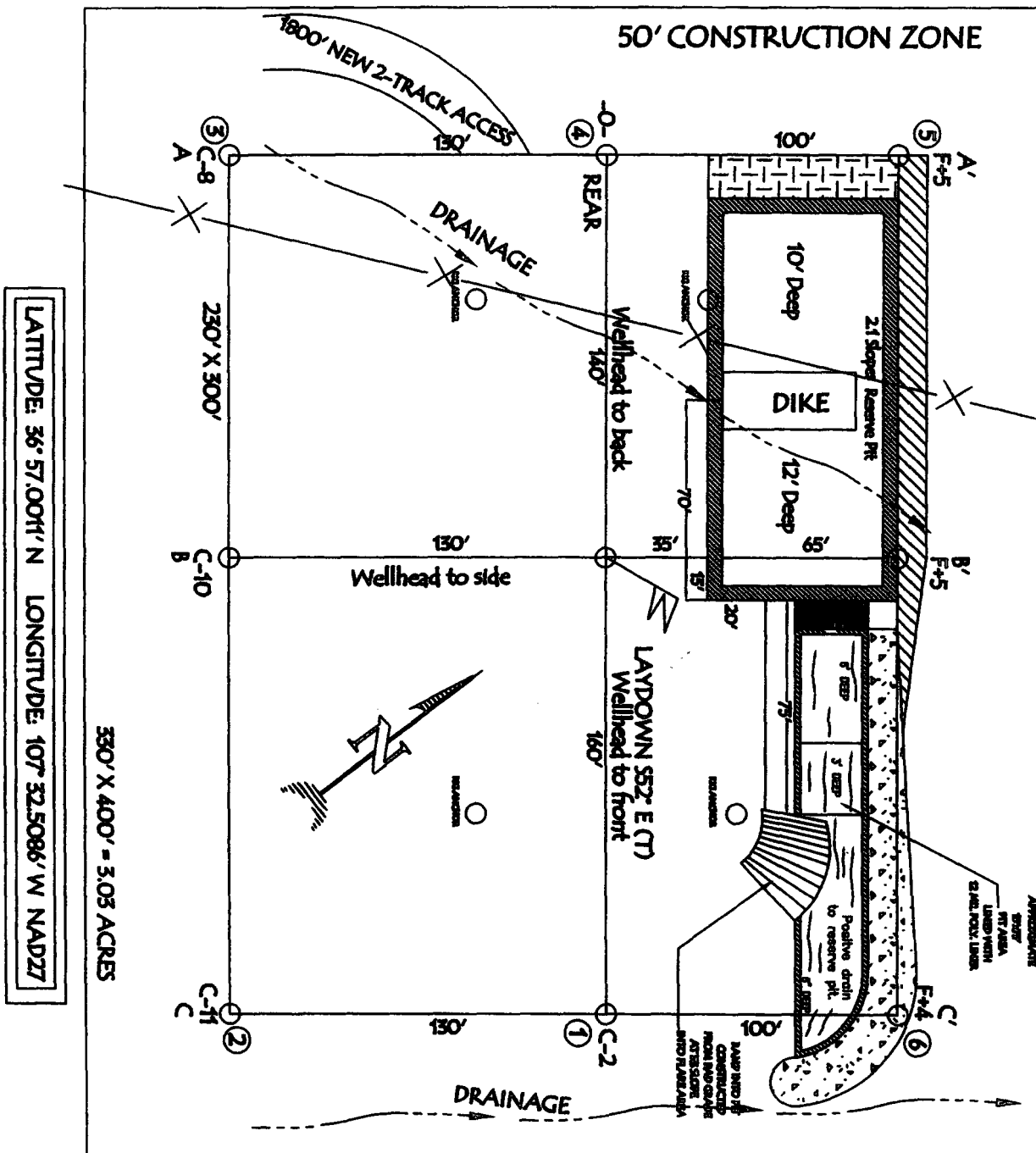
# BURLINGTON RESOURCES OIL & GAS COMPANY LP

BURNT MESA 2B, 2040' FSL & 925' FWL

SECTION 26, T32 N, R7W, NMPM, SAN JUAN COUNTY, NM

GROUND ELEVATION: 6645', DATE: NOVEMBER 22, 2005

RESERVE PIT DIKE: TO BE 8" ABOVE DEEP SIDE (OVERFLOW - 3' WIDE AND 1' ABOVE SHALLOW SIDE).



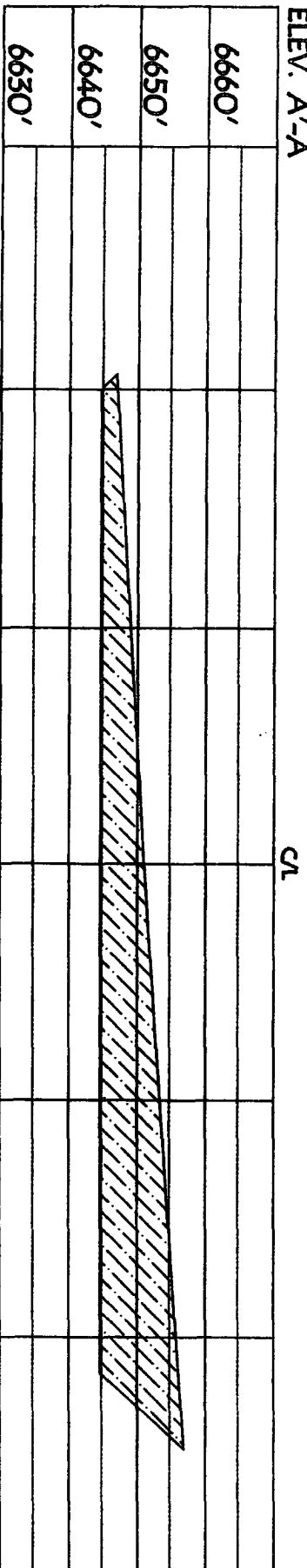
NOTE: VECTOR SURVEYS IS NOT LIABLE FOR UNDERGROUND UTILITIES OR PIPELINES.

CONTRACTOR SHOULD CALL ONE-CALL FOR LOCATION OF ANY MARKED OR UNMARKED BURIED

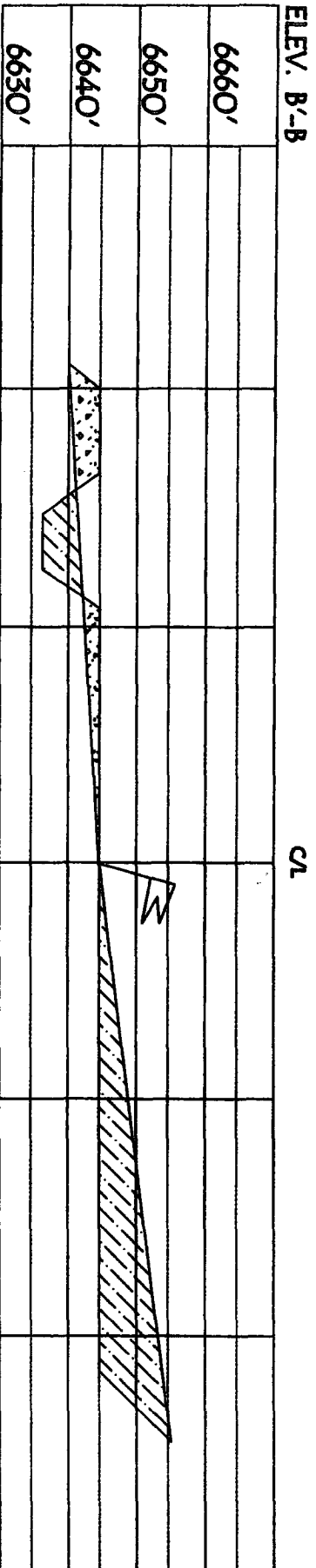
PIPELINES OR CABLES ON WELL PAD AND OR ACCESS ROAD AT LEAST TWO (2) WORKING DAYS PRIOR TO CONSTRUCTION.

**BURLINGTON RESOURCES OIL & GAS COMPANY LP**  
**BURNT MESA 2B, 2040' FSL & 925' FWL**  
**SECTION 26, T32 N, R7W, NMPM, SAN JUAN COUNTY, NM**  
**GROUND ELEVATION: 6645', DATE: NOVEMBER 22, 2005**

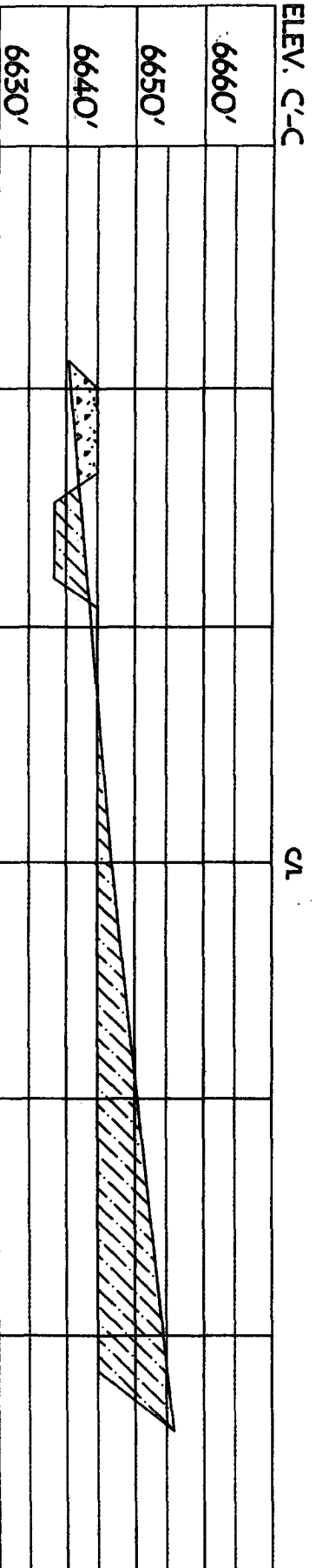
**ELEV. A'-A**



**ELEV. B'-B**



**ELEV. C'-C**



NOTE: VECTOR SURVEYS IS NOT LIABLE FOR UNDERGROUND UTILITIES OR PIPELINES.  
 CONTRACTOR SHOULD CALL ONE-CALL FOR LOCATION OF ANY MARKED OR UNMARKED BURIED  
 PIPELINES OR CABLES ON WELL PAD AND OR ACCESS ROAD AT LEAST TWO (2) WORKING DAYS PRIOR TO CONSTRUCTION.

Directions from the Intersection of  
Highway 172 & Highway 151 in Ignacio, CO  
to  
Burlington Resources Oil & Gas Company LP  
BURNT MESA #2B  
2040' FSL & 925' FWL,  
Section 26, T32N, R7W, N.M.P.M., San Juan County,  
New Mexico

Go East on Hwy 151 for 11.9 to CR 330,  
turn right (southerly) for 1.9 miles,  
turn right (westerly) 0.6 miles,  
stay left (south/southwesterly) 4.4 miles,  
to the top of Burnt Mesa  
turn right (westerly) 1.2 miles,  
to the beginning of new access on the right (north) side of  
the road which continues for 1800' to the  
newly staked well location.

**BURLINGTON RESOURCES OIL & GAS CO LP**

**BURNT MESA #2B**

**2040' FSL & 925' FWL**

**SEC 26, T32N, R7W, NMP M**

**SAN JUAN COUNTY, NEW MEXICO**

**APD MAP #1**

**1800' W2 SW SEC 26**

**NEW BLM ACCESS**

**EXISTING ACCESS**

**1800' NEW BLM ACCESS**

**BURNT MESA #2B**

**BURNT**

**MESA**

