

UNITED STATES
DEPARTMENT OF THE INTERIOR
BUREAU OF LAND MANAGEMENT
APPLICATION FOR PERMIT TO DRILL OR REENTER

FORM APPROVED
OMB No. 1004-0136
Expires November 30, 2000

5. Lease Serial No. **SF - 078095**

6. If Indian, Allottee or tribe Name

7. If Unit or CA Agreement, Name and No

1a. Type of Work: ☒ DRILL ☐ REENTER

1b. Type of Well: ☐ Oil Well ☒ Gas Well Gas ☐ Other ☐ Single Zone ☐ Multiple Zone

8. Lease Name and Well No.

Case A 4M 361

2. Name of Operator

BP AMERICA PRODUCTION COMPANY

9. API Well No.

30-045-33466

3a. Address

P.O. BOX 3092 HOUSTON, TX 77079-2064

3b. Phone No. (include area code)

281-366-4081

10. Field and Pool, or Exploratory

Basin Dakota & Blanco Mesaverde 12319

4. Location of Well (Report location clearly and in accordance with any State requirements.)*

At surface **2580' FNL & 2105' FEL SWNE**

At proposed prod. Zone **same**

11. Sec., T., R., M., or Blk. and survey or Area

SECTION 18 T31N & R11W

6

14. Distance in miles and direction from nearest town or post office*

6 MILES NORTH FROM AZTEC, NM

12. County or Parish

SAN JUAN

13. State

NEW MEXICO

15. Distance from proposed*

Location to nearest
Property or lease line, ft.

(Also to nearest drig. Ujnit line, if any) **1200'**

16. No. of Acres in lease

320

17. Spacing Unit dedicated to this well

320

E/L

18. Distance from proposed location*

to nearest well, drilling, completed,
applied for, on this lease, ft.

19. Proposed Depth

7405'

20. BLM/BIA Bond No. on file

WY2924

21. Elevations (show whether DF, KDB., RT, GL, etc.)

6165' GL

22. Approximate date work will start*

02/15/06

23. Estimated duration

7 DAYS

24. Attachments

The following, completed in accordance with the requirements of Onshore Oil and Gas Order No. 1, shall be attached to this form:

1. Well plat certified by a registered surveyor.
2. A Drilling Plan.
3. A Surface Use Plan (if the location is on National Forest System Lands, the SUPO shall be filed with the appropriate Forest Service Office).
4. Bond to cover the operations unless covered by an existing bond on file (see Item 20 above).
5. Operator certification.
6. Such other site specific information and/or plans as may be required by the authorized officer.

25. Signature

Cherry Hlava

Name (Printed/typed)

Cherry Hlava

Date

11/17/2005

Title

Regulatory Analyst

Approved by (Signature)

Jim Labe

Name (Printed/Typed)

Date

1/30/06

Title

James AFM

Office

Application approval does not warrant or certify the applicant holds legal or equitable title to those rights in the subject lease which would entitle the applicant to conduct Operations thereon.

Conditions of approval, if any, are attached.

Title 18 U.S.C. Section 1001 and title 43 U.S.C. Section 1212, make it a crime for any person knowingly and willfully to make to any department or agency of the United States any false, fictitious or fraudulent statements or representations as to any matter within its jurisdiction.

*(Instructions on reverse)

DRILLING OPERATIONS AUTHORIZED ARE
SUBJECT TO COMPLIANCE WITH ATTACHED
"GENERAL REQUIREMENTS".

This action is subject to technical and
procedural review pursuant to 43 CFR 3165.3
and appeal pursuant to 43 CFR 3165.4

NMOC

HOLD C104 FOR **NSL**

District I
PO Box 1980, Hobbs NM 88241-1980
District II
PO Drawer KK, Artesia, NM 87211-0719
District III
1000 Rio Brazos Rd., Aztec, NM 87410
District IV
PO Box 2088, Santa Fe, NM 87504-2088

State of New Mexico
Energy, Minerals & Natural Resources Department

OIL CONSERVATION DIVISION
PO Box 2088
Santa Fe, NM 87504-2088

Form C-102
Revised February 21, 1994

Instructions on back
Submit to Appropriate District Office
State Lease - 4 Copies
Fee Lease - 3 Copies

2005 DEC 2 PM 2 07

☐ AMENDED REPORT

WELL LOCATION AND ACREAGE DEDICATION PLAT

1 API Number 30-045-334100		2 Pool Code 71599; 72319		3 Pool Name Basin Dakota; Blanco Mesaverde	
4 Property Code 361		5 Property Name Case A		6 Well Number # 4M	
7 OGRID No. 000778		8 Operator Name BP AMERICA PRODUCTION COMPANY		9 Elevation 6165	

10 Surface Location

UL or Lot No. G	Section 18	Township 31 N	Range 11 W	Lot Idn	Feet from the 2580	North/South line NORTH	Feet from the 2105	East/West line EAST	County SAN JUAN
--------------------	---------------	------------------	---------------	---------	-----------------------	---------------------------	-----------------------	------------------------	--------------------

11 Bottom Hole Location If Different From Surface

7 UL or lot no.	Section	Township	Range	Lot Idn	Feet from the	North/South line	Feet from the	East/West line	County
12 Dedicated Acres 320		13 Joint or Infill		14 Consolidation Code		15 Order No.			

NO ALLOWABLE WILL BE ASSIGNED TO THIS COMPLETION UNTIL ALL INTERESTS HAVE BEEN CONSOLIDATED
OR A NON-STANDARD UNIT HAS BEEN APPROVED BY THE DIVISION

1314'(R)		1307'(R)		2815'(R)	
16 Lot 1					
Lot 2					
Lot 3					
Lot 4					
1309'(R)		1309'(R)		2618'(R)	

5204'(R) 535' 2580' 2105'

18

17 OPERATOR CERTIFICATION
I hereby certify that the information contained herein is true and complete to the best of my knowledge and belief.
Signature: Cherry Hlava
Printed Name: Cherry Hlava
Title: Regulatory Analyst
Date: 11-17-05

18 SURVEYOR CERTIFICATION
I hereby certify that the well location shown on this plat was plotted from field notes of actual surveys made by me or under my supervision, and that the same is true and correct to the best of my belief.
Date of Survey: September 15, 2005
Signature and Seal of Professional Surveyor: GARY D. VANN
7016
Certificate Number: 7016

Submit 3 Copies To Appropriate District Office
District I
1625 N. French Dr., Hobbs, NM 88240
District II
1301 W. Grand Ave., Artesia, NM 88210
District III
1000 Rio Brazos Rd., Aztec, NM 87410
District IV
1220 S. St. Francis Dr., Santa Fe, NM 87505

State of New Mexico
Energy, Minerals and Natural Resources

OIL CONSERVATION DIVISION
1220 South St. Francis Dr.
Santa Fe, NM 87505

Form C-103

May 27, 2004

WELL API NO. 30-045-33466

NEW WELL

5. Indicate Type of Lease
STATE ☐ FEE ☐

6. State Oil & Gas Lease No.

7. Lease Name or Unit Agreement Name
Case A
(APD filed with BLM SF 078095)

8. Well Number
4 M

9. OGRID Number
000778

10. Pool name or Wildcat
Basin Dakota & Blanco Mesaverde

SUNDRY NOTICES AND REPORTS ON WELLS

(DO NOT USE THIS FORM FOR PROPOSALS TO DRILL OR TO DEEPEN OR PLUG BACK TO A DIFFERENT RESERVOIR. USE "APPLICATION FOR PERMIT" (FORM C-101) FOR SUCH PROPOSALS.)

1. Type of Well: Oil Well ☐ Gas Well ☒ Other

2. Name of Operator
BP AMERICA PRODUCTION COMPANY

3. Address of Operator
P.O. BOX 3092 HOUSTON, TX 77079-2064

4. Well Location
Unit Letter G : 2580 feet from the North line and 2105 feet from the EAST line
Section 18 Township 31N Range 11W NMPM SAN JUAN County

11. Elevation (Show whether DR, RKB, RT, GR, etc.)
6165' GR

Pit or Below-grade Tank Application ☒ or Closure ☐

Pit type DRILLING Depth to Groundwater >100' Distance from nearest fresh water well >1000' Distance from nearest surface water >200' <1000'

Pit Liner Thickness: 12 mil Below-Grade Tank: Volume bbls; Construction Material

12. Check Appropriate Box to Indicate Nature of Notice, Report or Other Data

NOTICE OF INTENTION TO:

PERFORM REMEDIAL WORK ☐ PLUG AND ABANDON ☐
TEMPORARILY ABANDON ☐ CHANGE PLANS ☐
PULL OR ALTER CASING ☐ MULTIPLE COMPL ☐

OTHER: LINED DRILLING PIT

☒

SUBSEQUENT REPORT OF:

REMEDIAL WORK ☐ ALTERING CASING ☐
COMMENCE DRILLING OPNS. ☐ P AND A ☐
CASING/CEMENT JOB ☐

OTHER:

☐

13. Describe proposed or completed operations. (Clearly state all pertinent details, and give pertinent dates, including estimated date of starting any proposed work). SEE RULE 1103. For Multiple Completions: Attach wellbore diagram of proposed completion or recompletion.

Construct a lined drilling pit per BP America - San Juan Basin Drilling/ Workover Pit Construction Plan issued date of 11/17/2004. Pit will be closed according to closure plan on file.

I hereby certify that the information above is true and complete to the best of my knowledge and belief. I further certify that any pit or below-grade tank has been/will be constructed or closed according to NMOCD guidelines ☒, a general permit ☐ or an (attached) alternative OCD-approved plan ☐.

SIGNATURE Cherry Hlava TITLE Regulatory Analyst DATE 11/17/2005

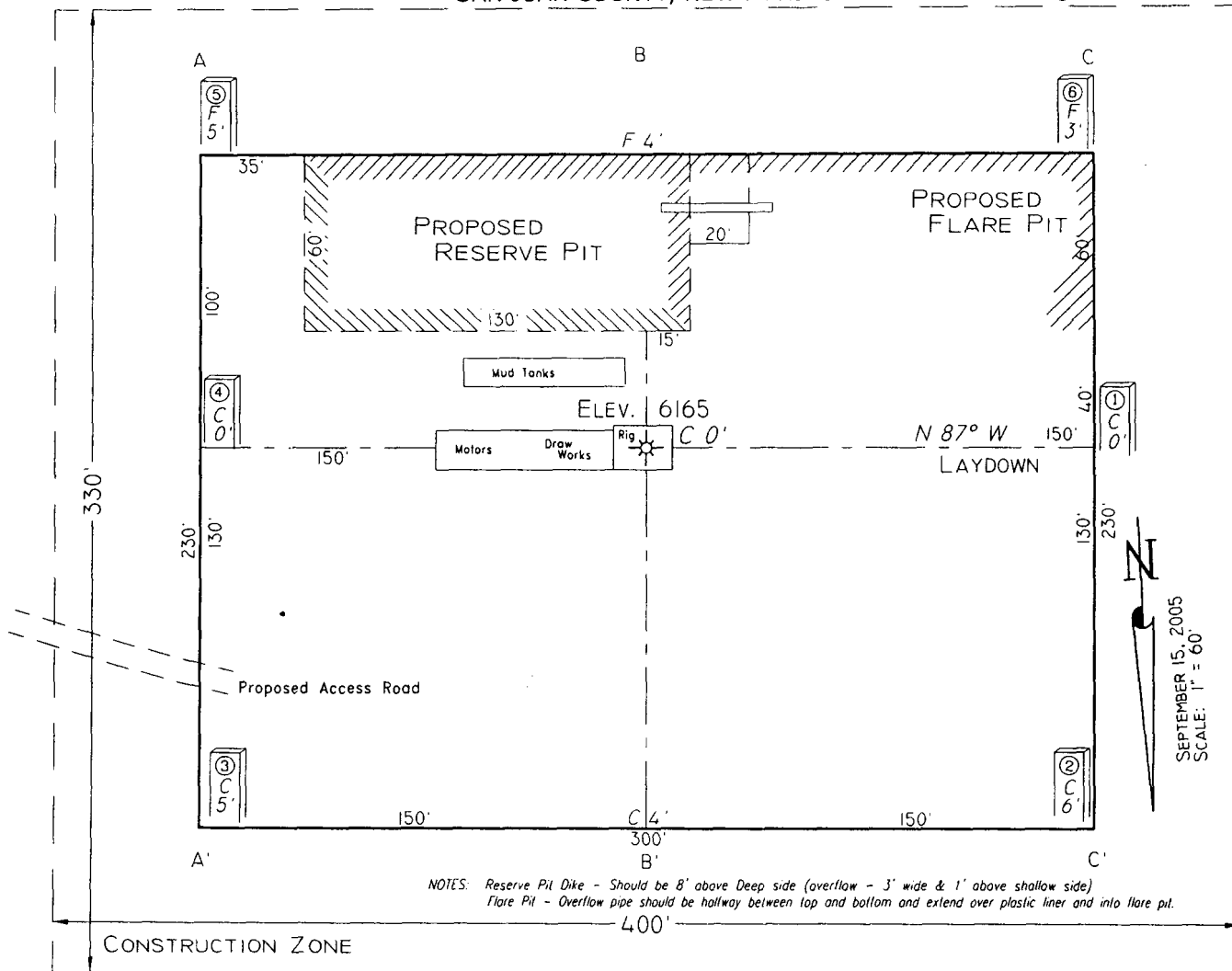
Type or print name Cherry Hlava E-mail address: hlavacl@bp.com Telephone No. 281-366-4081
For State Use Only

APPROVED BY: [Signature] TITLE DEPUTY OIL & GAS INSPECTOR, DIST. IV DATE FEB 01 2006
Conditions of Approval (if any)

PAD LAYOUT PLAN & PROFILE
 BP AMERICA PRODUCTION COMPANY
 Case A #4M
 2580' F/NL 2105' F/EL
 SEC. 18, T31N, R11W, N.M.P.M.
 SAN JUAN COUNTY, NEW MEXICO

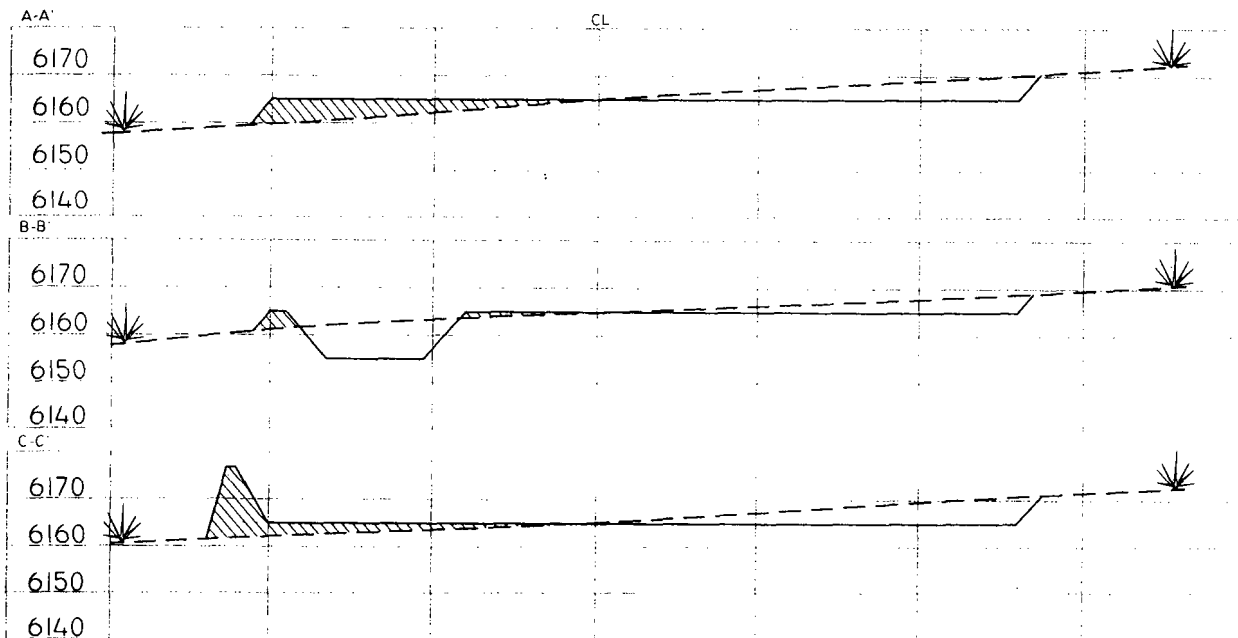
Lat: 36.8989°
 Long: 108.0297°

Lat: 36°53'56"
 Long: 108°01'47"



Area of Construction Zone - 330'x400' or 3.03 acres, more or less.

SCALE: 1"=60'-HORIZ.
 1"=40'-VERT.



NOTE: Contractor should call One-Call for location of any marked or unmarked buried pipelines or cables on well pad and/or access road at least two (2) working days prior to construction.

Cuts and fills shown are approximate - final finished elevation is to be adjusted so earthwork will balance. Corner stakes are approximate and do not include additional areas needed for sideslopes and drainages. Final Pad Dimensions are to be verified by Contractor.

VANN SURVEYS
 P. O. Box 1306
 Farmington, NM

BP AMERICA PRODUCTION COMPANY

DRILLING AND COMPLETION PROGRAM

10/6/2005

Lease:	Case A	Well Name & No.	Case A #4M	Field:	Blanco Mesaverde/Basin Dakota
County:	San Juan, New Mexico	Surface Location:	18-31N-11W: 2580' FNL, 2105' FEL		
Minerals:	State	Surface:	Lat: 36.8987950 deg; Long: -108.0291687 deg		
Rig :	Aztec 184	BH Location:	same		

OBJECTIVE: Drill 250' below the top of the Two Wells Mbr, set 4-1/2" production casing, Stimulate DK, MF, and PL intervals.

METHOD OF DRILLING		APPROXIMATE DEPTHS OF GEOLOGICAL MARKER			
TYPE OF TOOLS	DEPTH OF DRILLING	Actual GL:	6165	Estimated KB:	6,179.0'
Rotary	0 - TD	Marker		SUBSEA	TVD

LOG PROGRAM		APPROXIMATE DEPTHS OF GEOLOGICAL MARKER			
Type	Depth Interval	Marker		SUBSEA	TVD
Single Run		Ojo Alamo		5,128'	1,051'
		Kirtland		5,073'	1,106'
		Fruitland	*	4,168'	2,011'
		Fruitland Coal	*	3,730'	2,449'
		Pictured Cliffs	*	3,433'	2,746'
		Lewis	*	3,204'	2,975'
Cased Hole	TD to 7" shoe	Cliff House	#	1,978'	4,201'
RST- CBL		Menefee	#	1,623'	4,556'
		Point Lookout	#	1,196'	4,983'

REMARKS:	Mancos	820'	5,359'	5,359'
The recommended SHL & BHL are NSL (125' west of west edge of drillblock).	Greenhorn	-860'	7,039'	7,039'
An exceptional location permit will be required and approved prior to drilling.	Graneros (bent,mkr)	-920'	7,099'	7,099'
Report all flares.	Two Wells	#	-976'	7,155'
	Paguate	#	-1,054'	7,233'
The recommended TD is intended to penetrate the uppermost BRCN (~10') so that the entire ENCN can be produced. Offsetting wells to the west, south & north encountered no water flow in the BRCN. See attached cross-section.	Cubero	#	-1,100'	7,279'
	L. Cubero	#	-1,135'	7,314'
	Encinal Cyn	#	-1,162'	7,341'

The intermediate casing should be set 100' into the MENF to minimize the risks during drilling through the possibly water productive CLFH.	TOTAL DEPTH:	-1,226'	7,405'	7,405'
	# Probable completion interval		* Possible Pay	

SPECIAL TESTS		DRILL CUTTING SAMPLES		DRILLING TIME	
TYPE		FREQUENCY	DEPTH	FREQUENCY	DEPTH
None		30'/10' intervals	4,656' to TD	Geolograph	0 - TD

REMARKS:	
-----------------	--

MUD PROGRAM:					
Interval	TypeMud	#/gal	Vis, sec/qt	/30 min	Other Specification
200'	Spud	8.8 - 9.0	Sufficient to clean hole.		
4,656'	Water/LSND	8.4 - 9.0		<9	Sweep hole while whilst water drilling, LCM onsite
7,405'	Air	1	1000 cfm for hammer		Volume sufficient to maintain a stable and clean wellbore

CASING PROGRAM:							
CasingString	Depth	Size	Casing Size	Grade, Thread	Weight	Landing Point	Cement
Surface/Conductor	200'	13 1/2"	9-5/8"	H-40 ST&C	32#		cmt to surface
Intermediate 1	4,656'	8-3/4"	7"	J/K-55 ST&C	20#	100' below MENF	cmt to surface
Production	7,405'	6-1/4"	4-1/2"	B-110	11.6#	DKOT	150' inside Intermediate - TOC survey required

CORING PROGRAM:	None
------------------------	------

COMPLETION PROGRAM:	Rigless, 2-3 Stage Limited Entry Hydraulic Frac, FMC Unihead
----------------------------	--

GENERAL REMARKS:	Notify BLM/NMOCD 24 hours prior to Spud, BOP testing, and Casing and Cementing.
-------------------------	---

BOP Pressure Testing Requirements			
Formation	Depth	Anticipated bottom hole pressure	Max anticipated surface pressure**
Cliffhouse	4,201'	500	0
Point Lookout	4,983'	600	0
Dakota	7,155'	2600	1025.9

Requested BOP Pressure Test Exception = 1500 psi ** Note: Determined using the following formula: ABHP - (.22*TVD) = ASP

Form 46 Reviewed by:	Logging program reviewed by:		
PREPARED BY:	APPROVED:	DATE:	APPROVED:
HGJ JMP		6-Oct-05	
Form 46 7-84bw	For Drilling Dept.		For Production Dept.

Cementing Program

Well Name: Case A #4M
 Location: 18-31N-11W: 2580' FNL, 2105' FEL
 County: San Juan
 State: New Mexico

Well Flac
 Formation: Blanco Mesaverde/Basin Dakota
 KB Elev (est) 6179
 GL Elev. (est) 6165

Casing Program:

Casing String	Est. Depth (ft.)	Hole Size (in.)	Casing Size (in.)	Thread	TOC (ft.)	Stage Tool Or TOL (ft.)	Cmt Cir. Out (bbl.)
Surface	200	13.5	9.625	ST&C	Surface	NA	
Intermediate	4656	8.75	7	ST&C	Surface	NA	
Production -	7405	6.25	4.5	ST&C	4556	NA	

Casing Properties: (No Safety Factor Included)

Casing String	Size (in.)	Weight (lb/ft)	Grade	Burst (psi.)	Collapse (psi.)	Joint St. (1000 lbs.)	Capacity (bbl/ft.)	Drift (in.)
Surface	9.625	32	H-40	2270	1400	254	0.0787	8.845
Intermediate	7	20	K-55	3740	2270	224	0.0405	6.456
Production -	4.5	11.6	J-55	5350	4960	154	0.0155	3.875

Mud Program

Apx. Interval (ft.)	Mud Type	Mud Weight	Recommended Mud Properties Prio Cementing:	
			PV	<20
			YP	<10
			Fluid Los:	<15
0 - SCP	Water/Spud	8.6-9.2		
SCP - ICP	Water/LSND	8.6-9.2		
ICP - ICP2	Gas/Air Mist	NA		
ICP2 - TD	LSND	8.6 - 9.2		

Cementing Program:

	Surface	Intermediate	Production
Excess %, Lead	100	75	40
Excess %, Tail	NA	0	40
BHST (est deg. F)	75	120	183
Special Instructions	1,6,7	1,6,8	2,4,6

1. Do not wash pumps and lines.
2. Wash pumps and lines.
3. Reverse out
4. Run Blend Test on Cement
5. Record Rate, Pressure, and Density on 3.5" disk
6. Confirm densitometer with pressurized mud scales
7. 1" cement to surface if cement is not circulated.
8. If cement is not circulated to surface, run temp. survey 10-12 hr. after landing plug.

Notes: *Do not wash up on top of plug. Wash lines before displacing production cement job to minimize drillout.

Surface:

Preflush

20 bbl.

FreshWater

Slurry 1

TOC@Surface

	154	5x Class C Cement		
		+ 2% CaCl2 (accelerator)		
Density		Yield		Water
(lb/gal)		(ft3/sk)		(gal/sk)
Slurry 1	15.2	1.27		5.8
Casing Equipment:	9-5/8", 8R, ST&C			

195 cuft

0.4887 cuft/ft OH

- 1 Guide Shoe
- 1 Top Wooden Plug
- 1 Autofill insert float valve
- Centralizers, as needed
- 1 Stop Ring
- 1 Thread Lock Compound

Cementing Program

Intermediate:

Fresh Water	20 bbl	fresh water	
Lead		409 sx Class "G" Cement	1075 cuft
Slurry 1		+ 3% D79 extender	
TOC@Surface		+1/4 #/sk. Cellophane Flake	
		+ 5 lb/sk Gilsonite	
Tail		59 sx 50/50 Class "G"/Poz	75 cuft
Slurry 2		+ 2% gel (extender)	
500 ft fill		+1/4 #/sk. Cellophane Flake	0.1503 cuft/ft OH
		+ 2% CaCl2 (accelerator)	0.1746 cuft/ft csg ann
		+ 5 lb/sk Gilsonite	

Slurry Properties:	Density (lb/gal)	Yield (ft3/sk)	Water (gal/sk)
Slurry 1	11.4	2.63	15.8
Slurry 2	13.5	1.27	5.72

Casing Equipment: 7", 8R, ST&C

- 1 Float Shoe (autofill with minimal LCM in mud)
- 1 Float Collar (autofill with minimal LCM in mud)
- 1 Stop Ring
- Centralizers as needed
- 1 Top Rubber Plug
- 1 Thread Lock Compound

Production:

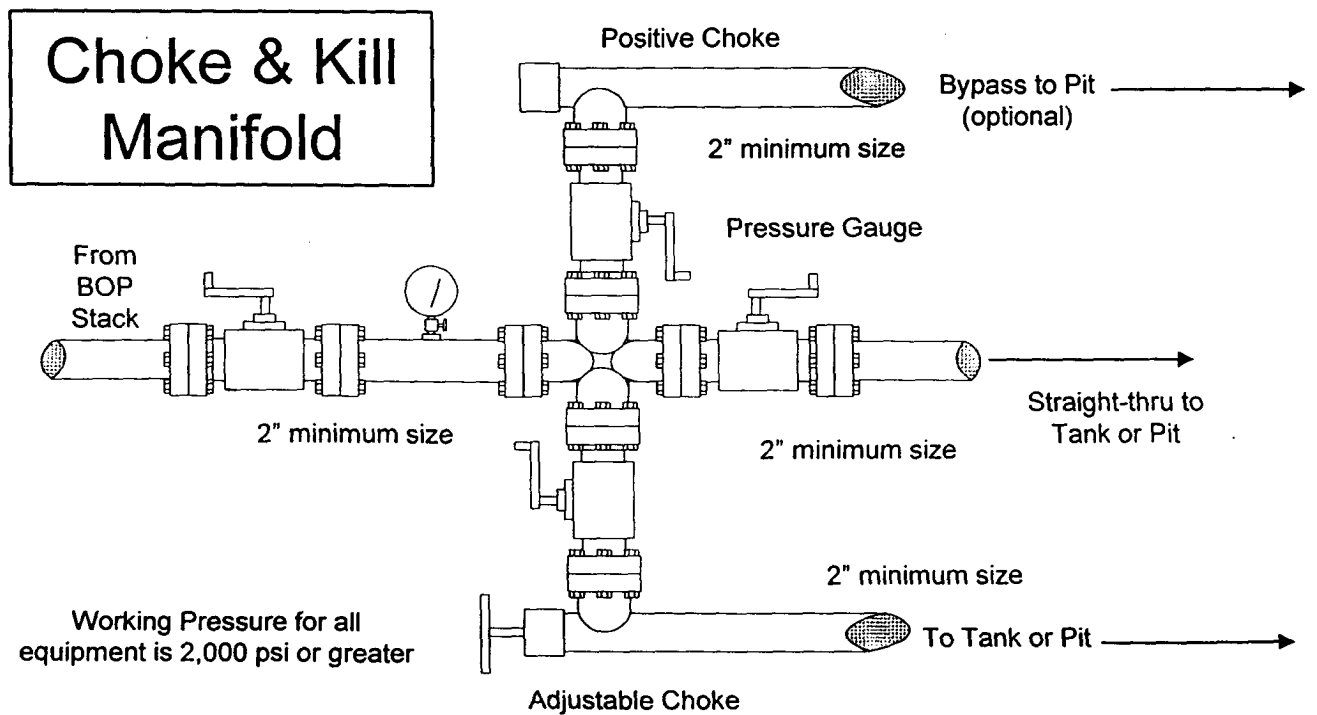
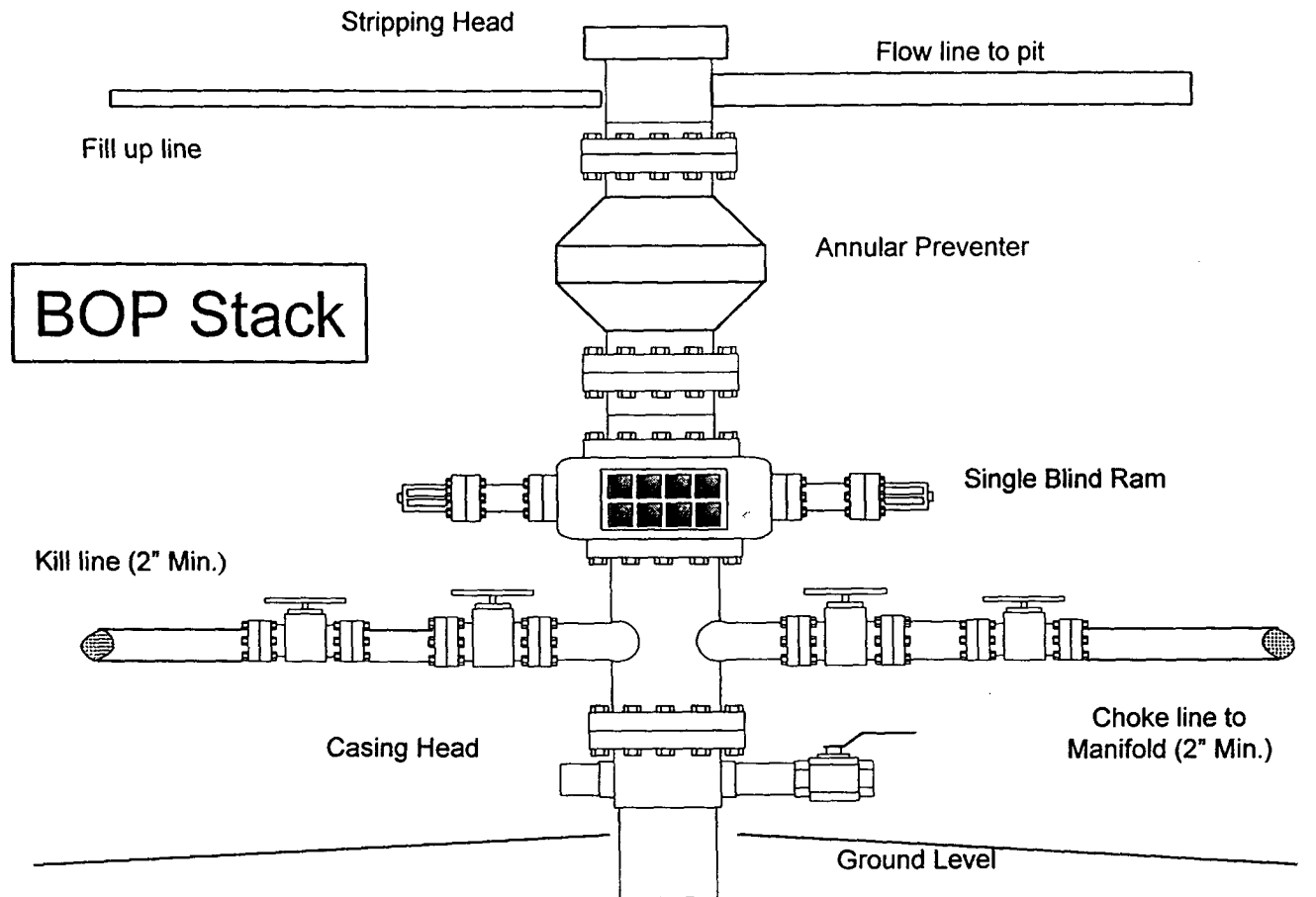
Fresh Water	10 bbl	CW100	
Lead		95 LiteCrete D961 / D124 / D154	238 cuft
Slurry 1		+ 0.03 gps D47 antifoam	
TOC, 400' above 7" shoe		+ 0.5% D112 fluid loss	
		+ 0.11% D65 TIC	
Tail		154 sx 50/50 Class "G"/Poz	222 cuft
Slurry 2		+ 5% D20 gel (extender)	
1546 ft fill		+ 0.1% D46 antifoam	
		+ 1/4 #/sk. Cellophane Flake	
		+ 0.25% D167 Fluid Loss	
		+ 5 lb/sk Gilsonite	
		+0.1% d800, retarder	
		+0.15% D65, dispersant	
			0.1026 cuft/ft OH
Slurry Properties:	Density (lb/gal)	Yield (ft3/sk)	Water (gal/sk)
Slurry 1	9.5	2.52	6.38
Slurry 2	13	1.44	6.5
			Top of Mancos
			5359

Casing Equipment: 4-1/2", 8R, ST&C

- 1 Float Shoe (autofill with minimal LCM in mud)
- 1 Float Collar (autofill with minimal LCM in mud)
- 1 Stop Ring
- Centralizers, as needed
- 1 Top Rubber Plug
- 1 Thread Lock Compound

BP American Production Company

Well Control Equipment Schematic



**SAN JUAN BASIN
Dakota Formation
Pressure Control Equipment**

Background

The objective Dakota formation maximum surface pressure is anticipated to be less than 1000 psi, based on shut-in surface pressures from adjacent wells. Pressure control equipment working pressure minimum requirements are therefore 2000 psi. Equipment to be used will conform to API RP-53 (Figure 2.C.2) for a 2000 psi system per Federal Onshore Order No. 2. Due to available conventional equipment within the area, 3000 psi rated pressure control equipment will typically be utilized in a single ram type arrangement. Regional drilling rights to be utilized have substructure height limitations which exclude the use of annular preventers; therefore a rotating head will be installed above these rams. This pressure control equipment will be utilized for conventional drilling below conductor to total depth in the Basin Dakota. No abnormal temperature, pressure, or H2S anticipated.

Equipment Specification

Interval

BOP Equipment

Below conductor casing to total depth 11" nominal or 7 1/16", 2000 psi Single ram preventer with 3000 psi annular preventer and rotating head. All ram type and annular preventers as well as related control equipment will be hydraulically tested to 250 psi (low pressure) and 1500 psi (high pressure), upon installation, following any repairs or equipment replacements, or at 30 day intervals. Accessories to BOP equipment will include kelly cock, upper Kelly cock with a handle available, floor safety valves and choke manifold which will also be tested to equivalent pressure.

FEDERAL CEMENTING REQUIREMENTS

- 1. All permeable zones containing fresh water and other usable water containing 10,000 PPM or less total dissolved solids will be isolated and protected from contamination by cement circulated in place for the protection of permeable zones per the NTL-FRA 90-1 Section III A.**
 - 2. The hole size will be no smaller than 1 ½" larger diameter than the casing O.D. across all water zones.**
 - 3. An adequate spacer will be pumped ahead of the cement slurry to help prevent mud contamination of the cement.**
 - 4. An adequate number of casing centralizers will be run through usable water zones to ensure that the casing is centralized through these zones. The adequate number of centralizers to use will be determined by API SPEC 10D.**
 - 5. Centralizers will impart a swirling action around the casing and will be used just below and into the base of the lowest usable water zone.**
 - 6. A chronological log will be kept recording the pump and slurry information and will be sent to the BLM with the subsequent sundry.**
-

Additional Operator Remarks
Case A 4M
APD

THE NOTICE OF STAKING WAS SUBMITTED ON 9/27/05

NSL APPLICATION IS REQUESTED FROM NMOCD IN SANTA FE 11/28/05.

BP America Production Company respectfully requests permission to drill the subject well to a total depth of approximately 7405', complete in the Basin Dakota Pool, isolate the Dakota; complete into the Blanco Mesaverde, establish a production rate; drill out the bridge plug and commingle production downhole.

Application for Downhole Commingling authority (NMOCD order R-11363) will be submitted to all appropriate for approval after Permit to Drill has been approved.

If terrain allows it is our intent to pre-set the 9 5/8" casing on the above mentioned well by drilling a surface hole with air/air mist in lieu of drilling mud and the surface casing be cemented with 94.5 cu/ft type I-II, 20% FLYASH, 14.5 PPG, 7.41 gal/sk, 1.61 cf/sk Yield, 80 DEG BHST ready mix cement. If the area will not allow for pre-set the approved cement program will be followed.

SUPPLEMENTAL TO SURFACE USE PLAN

New Facilities:

A 4.5" diameter buried steel pipeline that is +/- 600 feet in length will be constructed. The pipe wall thickness is .156 and the pipe wall strength is 42,000#. It will be adjacent to the access road and tie the well into an existing gas meter operated by BP America Production Company. The pipeline will not be used to transport gas to drill the well. After the well is spud the pipeline will be authorized by a right-of-way issued by El Paso Field Services.

APD/ROW

UNITED STATES
DEPARTMENT OF THE INTERIOR
BUREAU OF LAND MANAGEMENT

FORM APPROVED
OMB No. 1004-0135
Expires November 30, 2000

SUNDRY NOTICES AND REPORTS ON WELLS
*Do not use this form for proposals to drill or to re-enter an
Abandoned well. Use Form 3160-3 (APD) for such proposals.*

Lease Serial No.

SE - 078095

If Indian, Allottee or tribe Name

7. If Unit or CA/Agreement, Name and/or No.

SUBMIT IN TRIPLICATE - Other instructions on reverse side

1. Type of Well



Oil Well



Gas Well



Other

8. Well Name and No.

Case A 4M

2. Name of Operator

BP AMERICA PRODUCTION COMPANY

9. API Well No.

New Well 30-045-33466

3a. Address

PO BOX 3092 HOUSTON, TX 77253

3b. Phone No. (include area code)

281-366-4081

10. Field and Pool, or Exploratory Area

BASIN DAKOTA & BLANCO MESAVERDE

4. Location of Well (Footage, Sec., T., R., M., or Survey Description)

2580' FNL & 2105' FEL; SEC 18 T31N R11W SWNE Mer NMP

11. County or Parish, State

SAN JUAN, NM

12. CHECK APPROPRIATE BOX(ES) TO INDICATE NATURE OR NOTICE, REPORT, OR OTHER DATA

TYPE OF SUBMISSION



Notice of Intent



Subsequent Report



Final Abandonment Notice

TYPE OF ACTION



Acidize



Deepen



Production (Start/Resume)



Water shut-Off



Alter Casing



Fracture Treat



Reclamation



Well Integrity



Casing Repair



New Construction



Recomplete



Other



Change Plans



Plug and Abandon



Water Disposal

CHNG TO 7" CASING



Convert to Injection



Plug Back

13. Describe Proposed or Completed Operation (clearly state all pertinent details, including estimated starting date of any proposed work and approximate duration thereof. If the proposal is to deepen directionally or recomplete horizontally, give subsurface locations and measured and true vertical depths of all pertinent markers and zones. Attach the Bond under which the work will be performed or provide the Bond No. on file with BLM/BIA. Required subsequent reports shall be filed within 30 days following completion of the involved operations. If the operation results in a multiple completion or recompletion in a new interval, a Form 3160-4 shall be filed once testing has been completed. Final Abandonment Notices shall be filed only after all requirements, including reclamation, have been completed, and the operator has determined that the site is ready for final inspection.

The drilling plan (Form-46) submitted on 11/17/05 calls for the 7" J/K-55 ST&C 20# Intermediate casing to be set @ 4656'. This casing weight & grade isn't sufficient for the depth of 4656'. BP America requests permission to revise this casing to: 7" J/K-55 ST&C above the depth of 4000' and below 4000' casing will be 7" J-55 23# N-80.

14. I hereby certify that the foregoing is true and correct
Name (Printed/typed)

Cherry Hlava

Title **Regulatory Analyst**

Signature

Cherry Hlava

Date **01/18/2006**

THIS SPACE FOR FEDERAL OR STATE OFFICE USE

Approved by

Jim Lovel

Title

Admng Asst

Date

1/30/06

Conditions of approval, if any, are attached. Approval of this notice does not warrant or Certify that the applicant holds legal or equitable title to those rights in the subject lease which would entitle the applicant to conduct operations thereon.

Office

Title 18 U.S.C. Section 1001 and Title 43 U.S.C. Section 1212, make it a crime for any person knowingly and willfully to make to any department or agency of the United States any false, fictitious or fraudulent statements or representations as to any matter within its jurisdiction.

NMOC