

UNITED STATES
DEPARTMENT OF THE INTERIOR
BUREAU OF LAND MANAGEMENT

APPLICATION FOR PERMIT TO DRILL, DEEPEN, OR PLUG BACK

2006 JAN 12 PM 1 03

1a. Type of Work DRILL	5. Lease Number NMM-03541
1b. Type of Well GAS	Unit Reporting Number 075 FARMINGTON NM
2. Operator BURLINGTON 14538 RESOURCES Oil & Gas Company, LP	6. If Indian, All. or Tribe
3. Address & Phone No. of Operator PO Box 4289, Farmington, NM 87499 (505) 326-9700	7. Unit Agreement Name
4. Location of Well Unit P (SESE), 955' FSL & 480' FEL, Latitude 36° 37.7010'N Longitude 107° 48.2391'W	8. Farm or Lease Name Hancock 7076
	9. Well Number 7128
	10. Field, Pool, Wildcat Basin Fruitland Coal 71629
	11. Sec., Twn, Rge, Mer. (NMPM) Sec. 29, T28N, R09W API # 30-045-33519
14. Distance in Miles from Nearest Town	12. County San Juan
	13. State NM
15. Distance from Proposed Location to Nearest Property or Lease Line 480'	
16. Acres in Lease	17. Acres Assigned to Well FC - 320 acres 8/2
18. Distance from Proposed Location to Nearest Well, Drig, Compl, or Applied for on this Lease Hancock 6M	
19. Proposed Depth 2735'	20. Rotary or Cable Tools Rotary
21. Elevations (DF, FT, GR, Etc.) 6404' GL	22. Approx. Date Work will Start
23. Proposed Casing and Cementing Program See Operations Plan attached	
24. Authorized by: <u>Patsy Chisitor</u> Sr. Regulatory Specialist	Date <u>1/10/06</u>

PERMIT NO.

APPROVAL DATE

APPROVED BY

TITLE

DATE

Archaeological Report attached

Threatened and Endangered Species Report attached

NOTE: This format is issued in lieu of U.S. BLM Form 3160-3

Title 18 U.S.C. Section 1001, makes it a crime for any person knowingly and willfully to make to any department or agency of the United States any false, fictitious or fraudulent statements or presentations as to any matter within its jurisdiction.

Not an HPA FC Well

This action is subject to technical and procedural review pursuant to 43 CFR 3165.3 and appeal pursuant to 43 CFR 3165.4

DRILLING OPERATIONS AUTHORIZED ARE
SUBJECT TO COMPLIANCE WITH ATTACHED
"GENERAL REQUIREMENTS".

NMOCDA

DISTRICT I
1625 N. French Dr., Hobbs, N.M. 88240

DISTRICT II
1301 W. Grand Ave., Artesia, N.M. 88210

DISTRICT III
1000 Rio Brazos Rd., Aztec, N.M. 87410

DISTRICT IV
1220 South St. Francis Dr., Santa Fe, NM 87505

State of New Mexico
Energy, Minerals & Natural Resources Department

OIL CONSERVATION DIVISION

1220 South St. Francis Dr.
Santa Fe, NM 87505

Form C-102

Revised June 10, 2003

Submit to Appropriate District Office

State Lease - 4 Copies

Fee Lease - 3 Copies

RECEIVED

☐ AMENDED REPORT

CTO FARMINGTON NM

WELL LOCATION AND ACREAGE DEDICATION PLAT

¹ API Number 30-045- 33519	² Pool Code 71629	³ Pool Name Basin Fruitland Coal
⁴ Property Code 7076	⁵ Property Name HANCOCK	⁶ Well Number 712S
⁷ GRID No. 14538	⁸ Operator Name BURLINGTON RESOURCES OIL & GAS COMPANY LP	⁹ Elevation 6404

¹⁰ Surface Location

UL or lot no. P	Section 29	Township 28-N	Range 9-W	Lot Idn	Feet from the 955	North/South line SOUTH	Feet from the 480	East/West line EAST	County SAN JUAN
--------------------	---------------	------------------	--------------	---------	----------------------	---------------------------	----------------------	------------------------	--------------------

¹¹ Bottom Hole Location If Different From Surface

UL or lot no.	Section	Township	Range	Lot Idn	Feet from the	North/South line	Feet from the	East/West line	County
¹² Dedicated Acres S2 320 FC		¹³ Joint or Infill		¹⁴ Consolidation Code		¹⁵ Order No.			

NO ALLOWABLE WILL BE ASSIGNED TO THIS COMPLETION UNTIL ALL INTERESTS HAVE BEEN CONSOLIDATED
OR A NON-STANDARD UNIT HAS BEEN APPROVED BY THE DIVISION

16

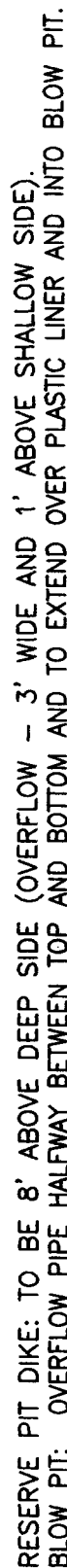
				<p>17 OPERATOR CERTIFICATION</p> <p>I hereby certify that the information contained herein is true and complete to the best of my knowledge and belief</p> <p><u>Amanda Sandoval</u> Signature Amanda Sandoval Printed Name Regulatory Assistant II Title 12-8-05 Date</p>	
				<p>18 SURVEYOR CERTIFICATION</p> <p>I hereby certify that the well location shown on this plat was plotted from field notes of actual surveys made by me or under my supervision, and that the same is true and correct to the best of my belief.</p> <p>DECEMBER 12, 2005 Date of Survey <u>JOHN A. VORONICH</u> Signature of Registered Professional Surveyor 14831 Certificate Number</p>	

HANCOCK No. 712S, 955 FSL 480 FEL

SECTION 29, T-28-N, R-9-W, N.M.P.M., SAN JUAN COUNTY, NEW MEXICO

GROUND ELEVATION: 6404, DATE: DECEMBER 2, 2005

LATITUDE: 36°37.7010' N (NAD 27) LONGITUDE: 107°48.2391' W (NAD 27)



NOTE: DAGGETT ENTERPRISES, INC. IS NOT LIABLE FOR UNDERGROUND UTILITIES OR PIPELINES. NEW MEXICO ONE CALL TO BE NOTIFIED 48 HOURS PRIOR TO EXCAVATION OR CONSTRUCTION.

NOTE: ESTIMATED VOLUMES CALCULATED BY AVERAGE
END AREA AT CROSS-SECTION SHOWN

NOTE: CONTRACTOR SHOULD CALL ONE-CALL FOR LOCATION OF ANY MARKED OR UNMARKED BURIED PIPELINES OR CABLES ON WELL PAD AND OR ACCESS ROAD AT LEAST TWO (2) WORKING DAYS PRIOR TO CONSTRUCTION.



Daggett Enterprises, Inc.
Surveying and Oil Field Services
 P. O. Box 15068 • Farmington, NM 87401
 Phone (505) 326-1772 • Fax (505) 326-6019
 NEW MEXICO L.S. 14831

DEWEN BR. A.G.
FORM 99301

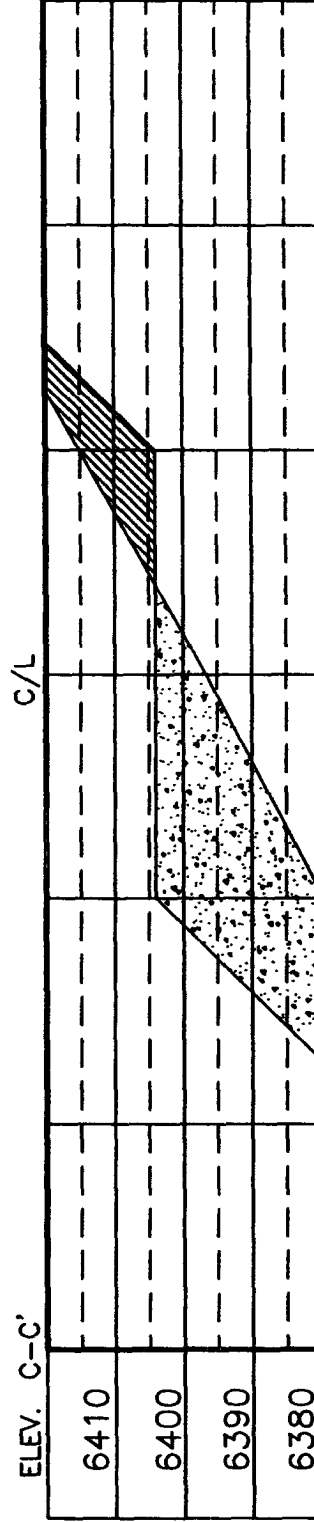
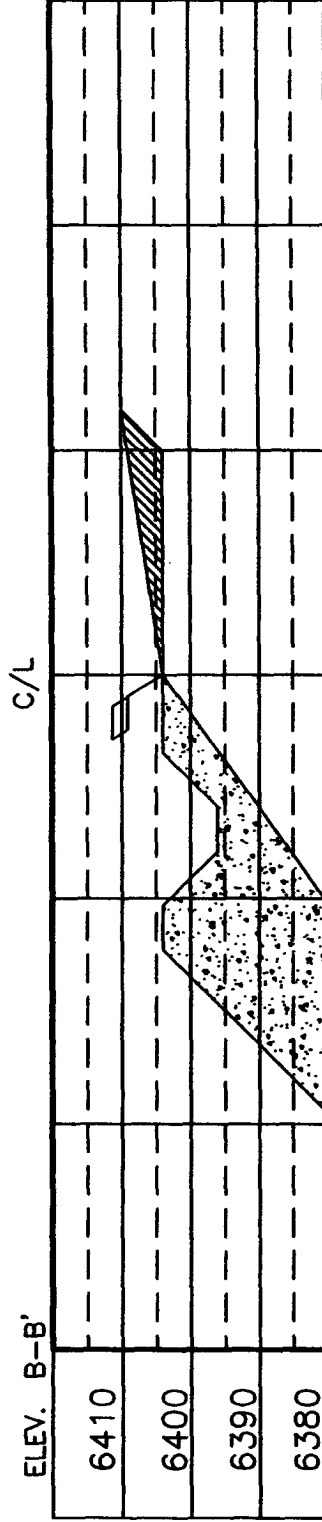
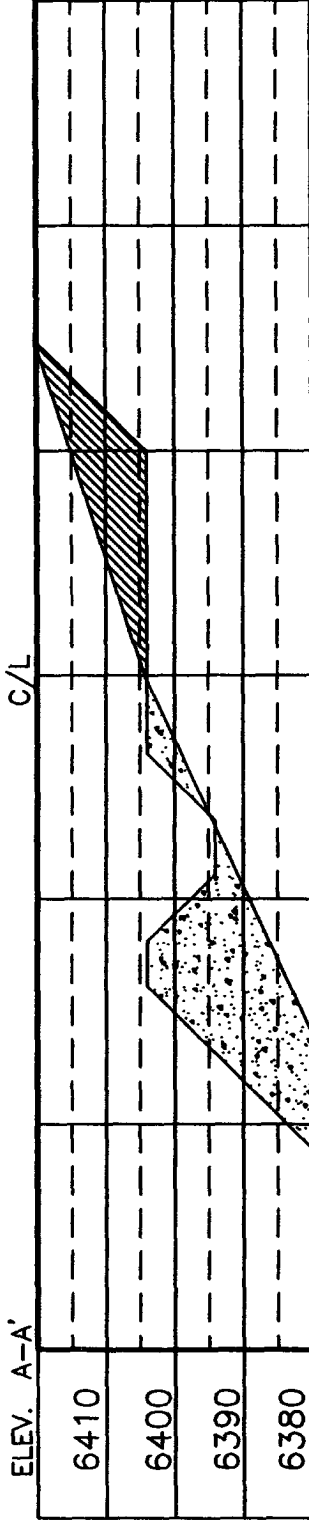
BURLINGTON RESOURCES OIL & GAS COMPANY LP

HANCOCK No. 712S, 955 FSL 480 FEL

SECTION 29, T-28-N, R-9-W, N.M.P.M., SAN JUAN COUNTY, NEW MEXICO


GROUND ELEVATION: 6404, DATE: DECEMBER 2, 2005

LATITUDE: 36°37.7010' N (NAD 27) LONGITUDE: 107°48.2391' W (NAD 27)



NOTE: DAGGETT ENTERPRISES, INC. IS NOT LIABLE FOR UNDERGROUND UTILITIES OR PIPELINES. NEW MEXICO ONE CALL TO BE NOTIFIED 48 HOURS PRIOR TO EXCAVATION OR CONSTRUCTION.

NOTE: CONTRACTOR SHOULD CALL ONE-CALL FOR LOCATION OF ANY MARKED OR UNMARKED BURIED PIPELINES OR CABLES ON WELL PAD AND OR ACCESS ROAD AT LEAST TWO (2) WORKING DAYS PRIOR TO CONSTRUCTION.

REVISION	DATE	REVISION BY
		
Daggett Enterprises, Inc. Surveying and Oil Field Services P. O. Box 15068 • Farmington, NM 87401 Phone (505) 326-1772 • Fax (505) 326-8019 NEW MEXICO L.S. 14831		
DRAWN BY: A.B. CHECKED BY: B.B. DATE: 12/07/05		

OPERATIONS PLAN

Well Name: Hancock #712S
Location: Unit P (SESE), 955' FSL & 480' FEL, Sec. 29, T28N, R9W
 San Juan County, New Mexico
 Latitude 36° 37.7010'N Longitude 107° 48.2391' W
Formation: Basin Fruitland Coal
Elevation: 6404' GR

Formation:	Top	Bottom	Contents
Ojo Alamo	1535'	1650'	aquifer
Kirtland	1650'	2352'	gas
T/Fruitland	2352'		gas
B/Fruitland	2533'		
Pictured Cliffs	2535'		
Total Depth	2735'		

Logging Program: None

Mud Program:

<u>Interval</u>	<u>Type</u>	<u>Weight</u>	<u>Vis. Fluid Loss</u>
0- 200'	Spud/Air/Air Mist	8.4-8.9	40-50 no control
200-2735'	Non-dispersed	8.4-9.5	30-60 no control

Casing Program:

<u>Hole Size</u>	<u>Depth Interval</u>	<u>Csg. Size</u>	<u>Wt.</u>	<u>Grade</u>
8 $\frac{3}{4}$ "	0 - 200'	7"	20.0#	J-55
6 $\frac{1}{4}$ "	0 - 2735'	4 1/2"	10.5#	J/K-55

Tubing Program:

0 - 2735'	2 3/8"	4.7#	J-55
-----------	--------	------	------

Float Equipment: 7" surface casing - guide shoe. Centralizers will be run in accordance with Onshore Order #2.

4 1/2" production casing - float shoe and float collar on bottom. Centralizers run every third joint above shoe to the base of the Ojo Alamo @ 861'. Two turbolizing type centralizers - one below and one into the base of the Ojo Alamo @ 861'. Standard centralizers thereafter every fourth joint up to the base of the surface pipe.

Wellhead Equipment: 7" x 4 1/2" x 2 3/8" x 11" 2000 psi xmas tree assembly.

January 10, 2006

Cementing:

7" surface casing Pre-Set Drilled - Cement with Type I, II cement with 20% flyash mixed at 14.5 ppg, 1.28 cu ft per sack yield. (Bring cement to surface). Wait on cement for 24 hours for pre-set holes before pressure testing or drilling out from under surface.

7" surface casing - Cement with 70 sx Type III cement with 0.25 pps Celloflake, 3% CaCl. (90 cu ft of slurry @ 1.28 yield). 200% excess, bring cement to surface. Wait on cement for 8 hrs for conventionally set holes before pressure testing or drilling out from under surface.
WOC until cement establishes 250 psi compressive strength prior to NU of BOPE.

4 1/2" production casing - Cement with ¹⁵⁰50 sx (321 cu ft of slurry @ 2.13 yield) Premium Lite with 3% calcium chloride, 5 pps LCM-1, and 1/4#/sack celloflake, 0.4% FL-52, & 0.4% SMS. Tail with 90 sacks (124 cu ft of slurry @ 1.38 yield) Type III cmt with 1% calcium chloride, 1/4#/sack Celloflake and 0.2% FL-52. Total of 445 cf - 50% excess to circulate to surface.

BOP and tests:

Surface to TD - 11" 2000 psi (minimum double gate BOP stack (Reference Figure #1 and #2). Prior to drilling out surface casing, test rams to 600 psi/30 min.

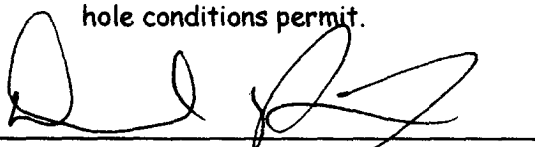
Completion - 6" 2000 psi (minimum) double gate BOP stack (Reference Figure #2). Prior to completion operations, test rams and casing to 1500 psi/30 min.

From surface to TD - choke manifold (Reference Figure #3).

Pipe rams will be actuated at least once each day and blind rams actuated once each trip to test proper functioning. An upper kelly cock valve with handle and drill string safety valves to fit each drill string will be maintained and available on the rig floor.

Additional information:

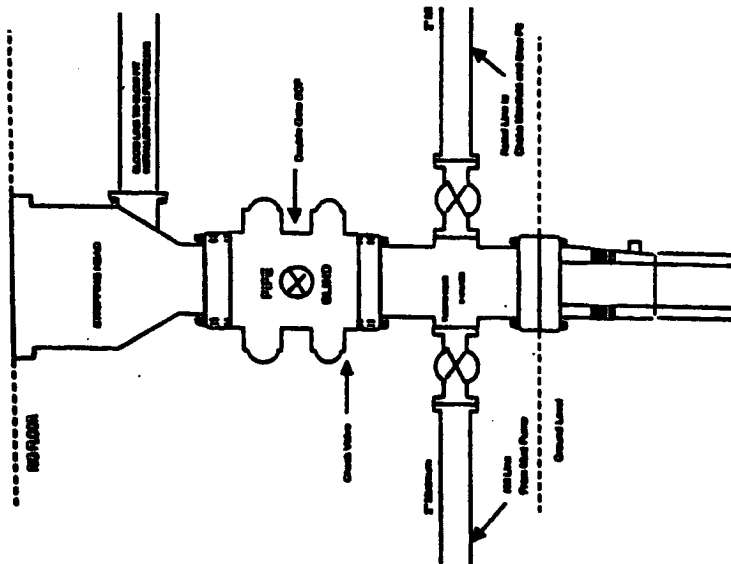
- * This is a replacement well for the East 20 PC/FC well which has had the PC interval plugged back and is currently only producing Fruitland Coal.
- * The Pictured Cliffs formation will be completed.
- * Anticipated pore pressure for the Pictured Cliffs is 600 psi.
- * This gas is dedicated.
- * The northeast quarter of the section is dedicated to this well.
- * New casing will be utilized.
- * Pipe movement (either rotation or reciprocation) will be done if hole conditions permit.


Drilling Engineer

1/10/06
Date

BURLINGTON RESOURCES

**Completion/Workover Rig
BOF Configuration
2,000 psi System**

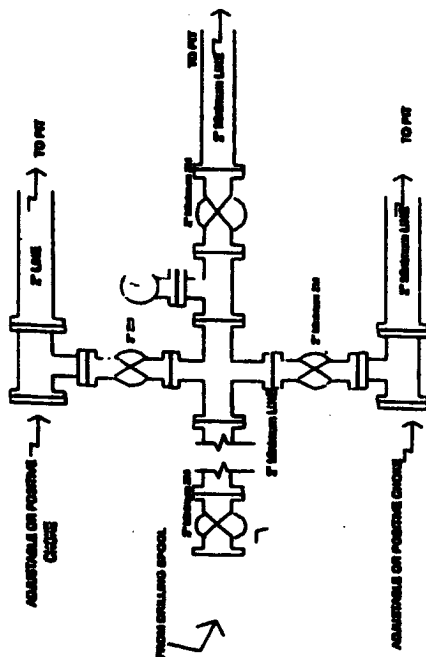


Minimum SGP Installation for all CompleteMoreWorkover Operations. 7-1/8" bore, 2000 psi minimum working pressure stands gate SGP to be equipped with blind and snubbers. A snubbing head to be installed on the top of the SGP. All SGP equipment in 2000 psi working pressure or greater including 500 psi snubbing head.

Abstract

BURLINGTON RESOURCES

**Drilling Rig
Choke Manifold Configuration
2000 psi System**

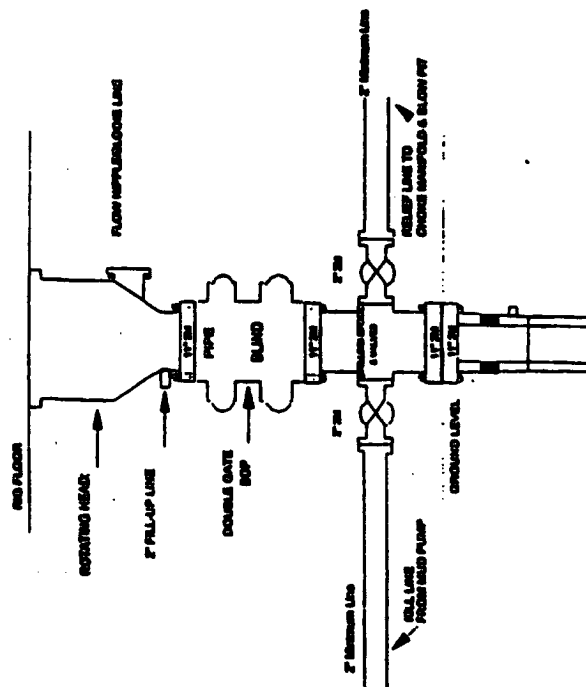


Choice masthead investigation from Surface Casting
Point to Total Depth. 2,000psi working pressure
equipment with two choices.

Figure #3

Burlington Resources

Drilling Rig
2000 psi System



SCP Installation from Surface Casing Point to Total Depth. 11" Bore 10" Nominal, 2000 psi working pressure checks good. SCP to be equipped with blind rams and pipe rams. A 500 psi working based on top of ram protection. All SCP equipment is 3,000 psi working pressure

Figure #1