

UNITED STATES
DEPARTMENT OF THE INTERIOR
BUREAU OF LAND MANAGEMENT

APPLICATION FOR PERMIT TO DRILL, DEEPEN, OR PLUG BACK

1a. Type of Work DRILL	5. Lease Number SF-078388 Unit Reporting Number NM NM 078394B	
1b. Type of Well GAS	6. If Indian, All. or Tribe	
2. Operator BURLINGTON RESOURCES Oil & Gas Company	7. Unit Agreement Name Huerfanito Unit	
3. Address & Phone No. of Operator PO Box 4289, Farmington, NM 87499 (505) 326-9700	8. Farm or Lease Name 9. Well Number 92F	
4. Location of Well Unit N (SESW), 660' FSL, 1615' FWL Latitude 36° 29.8271'N Longitude 107° 44.6284'W	10. Field, Pool, Wildcat Basin Dakota 11. Sec., Twn, Rge, Mer. (NMPM) Sec. 12, T26N, R9W API # 30-045-33600	
14. Distance in Miles from Nearest Town 18 miles to Bloomfield, NM	12. County San Juan	13. State NM
15. Distance from Proposed Location to Nearest Property or Lease Line 660'	17. Acres Assigned to Well 320 8/2 DK	
18. Distance from Proposed Location to Nearest Well, Drlg, Compl, or Applied for on this Lease 873' - Huerfanito Unit 5	20. Rotary or Cable Tools Rotary	
19. Proposed Depth 6628'	22. Approx. Date Work will Start	
21. Elevations (DF, FT, GR, Etc.) 6335' GL	23. Proposed Casing and Cementing Program See Operations Plan attached	
24. Authorized by: <i>Armanda Sanderson</i> Regulatory Compliance Assistant II	Date 2-15-06	

PERMIT NO. _____ APPROVAL DATE _____
APPROVED BY *[Signature]* TITLE *AFM* DATE *2/23/06*

Archaeological Report attached

Threatened and Endangered Species Report attached

NOTE: This format is issued in lieu of U.S. BLM Form 3160-3

Title 18 U.S.C. Section 1001, makes it a crime for any person knowingly and willfully to make to any department or agency of the United States any false, fictitious or fraudulent statements or presentations as to any matter within its jurisdiction.

NO FEDERAL FUNDS AUTHORIZED ARE
TO BE USED FOR ANY PURPOSE WITH ATTACHED
FEE

NMOCB

This action is subject to technical and
approved by the new rules unit to 48 CFR 31.10.3
and 31.10.4

DISTRICT I
1625 N. French Dr., Hobbs, N.M. 88240

DISTRICT II
1301 W. Grand Ave., Artesia, N.M. 88210

DISTRICT III
1000 Rio Brazos Rd., Aztec, N.M. 87410

DISTRICT IV
1220 South St. Francis Dr., Santa Fe, NM 87505

State of New Mexico
Energy, Minerals & Natural Resources Department

OIL CONSERVATION DIVISION

1220 South St. Francis Dr.
Santa Fe, NM 87505

Form C-10:

Revised June 10, 2001

Submit to Appropriate District Office
State Lease - 4 Copies
Fee Lease - 3 Copies

RECEIVED
070 FARMINGTON NM
AMENDED REPORT

WELL LOCATION AND ACREAGE DEDICATION PLAT

¹ API Number 30-045-33600	² Pool Code 71599	³ Pool Name Basin Dakota
⁴ Property Code 7138	⁵ Property Name HUERFANITO UNIT	⁶ Well Number 92F
⁷ OGRID No. 14538	⁸ Operator Name BURLINGTON RESOURCES OIL & GAS COMPANY LP	⁹ Elevation 6335

¹⁰ Surface Location

UL or lot no.	Section	Township	Range	Lot Idn	Feet from the	North/South line	Feet from the	East/West line	County
N	12	26-N	9-W		660	SOUTH	1615	WEST	SAN JUAN

¹¹ Bottom Hole Location If Different From Surface

UL or lot no.	Section	Township	Range	Lot Idn	Feet from the	North/South line	Feet from the	East/West line	County
¹² Dedicated Acres 320 S/2			¹³ Joint or Infill		¹⁴ Consolidation Code		¹⁵ Order No.		

NO ALLOWABLE WILL BE ASSIGNED TO THIS COMPLETION UNTIL ALL INTERESTS HAVE BEEN CONSOLIDATED
OR A NON-STANDARD UNIT HAS BEEN APPROVED BY THE DIVISION

16

FD 2 1/2" GLO 1947 B.C.	12	USA SF-078388	USA SF-078434
S 00°06'52" W 2636.54' (M)			
1615'		LAT: 36°29.8271' N. (NAD 27) LONG: 107°44.6284' W. (NAD 27)	
FD 2 1/2" GLO 1947 B.C.	660'	N 89°51'10" W 2605.21' (M)	FD 2 1/2" GLO 1947 B.C.

17 OPERATOR CERTIFICATION

I hereby certify that the information contained herein is true and complete to the best of my knowledge and belief

Amanda Sandoval
Signature

Amanda Sandoval
Printed Name

Regulatory Assistant II

Title

-25-06
Date

18 SURVEYOR CERTIFICATION

I hereby certify that the well location shown on this plat was plotted from field notes of actual surveys made by me or under my supervision, and that the same is true and correct to the best of my belief.

JANUARY 2005

Date of Survey

Signature of Professional Surveyor

14831

21-06

CERTIFIED PROFESSIONAL SURVEYOR

14831

Certificate Number

Submit 3 Copies To Appropriate District Office

State of New Mexico

Form C-103

May 27, 2004

Energy, Minerals and Natural Resources

District I

1625 N. French Dr., Hobbs, NM 88240

District II

1301 W. Grand Ave., Artesia, NM 88210

District III

1000 Rio Brazos Rd., Aztec, NM 87410

District IV

1220 S. St. Francis Dr., Santa Fe, NM 87505

OIL CONSERVATION DIVISION

1220 South St. Francis Dr.

Santa Fe, NM 87505

WELL API NO.

30-045-

5. Indicate Type of Lease

STATE ☐

FEE ☐

6. State Oil & Gas Lease No.

SF-078388

7. Lease Name or Unit Agreement Name

Huerfanito Unit

8. Well Number

92F

9. OGRID Number

14538

10. Pool name or Wildcat

Basin Dakota

SUNDRY NOTICES AND REPORTS ON WELLS

(DO NOT USE THIS FORM FOR PROPOSALS TO DRILL OR TO DEEPEN OR PLUG BACK TO A DIFFERENT RESERVOIR. USE "APPLICATION FOR PERMIT" (FORM C-101) FOR SUCH PROPOSALS.)

1. Type of Well:

Oil Well ☐

Gas Well ☒

Other

2. Name of Operator

BURLINGTON RESOURCES OIL & GAS COMPANY LP

3. Address of Operator

3401 E. 30TH STREET, FARMINGTON, NM 87402

4. Well Location

Unit Letter N : 660 feet from the South line and 1615 feet from the West line
Section 12 Township 26N Rng 9W NMPM County San Juan

11. Elevation (Show whether DR, RKB, RT, GR, etc.)

6335'

Pit or Below-grade Tank Application

☐ or Closure ☐

Pit type

new drill

Depth to Groundwater

>100'

Distance from nearest fresh water well

>1000

Distance from nearest surface water

<1000

Pit Liner Thickness:

12

mil

Below-Grade Tank:

Volume

bbbs;

Construction Material

12. Check Appropriate Box to Indicate Nature of Notice, Report or Other Data

NOTICE OF INTENTION TO:

PERFORM REMEDIAL WORK ☐

TEMPORARILY ABANDON ☐

PULL OR ALTER CASING ☐

PLUG AND ABANDON ☐

CHANGE PLANS ☐

MULTIPLE COMPL ☐

OTHER:

New Drill Pit

☒

SUBSEQUENT REPORT OF:

REMEDIAL WORK ☐

COMMENCE DRILLING OPNS. ☐

CASING/CEMENT JOB ☐

ALTERING CASING ☐

P AND A ☐

OTHER: ☐

13. Describe proposed or completed operations. (Clearly state all pertinent details, and give pertinent dates, including estimated date of starting any proposed work). SEE RULE 1103. For Multiple Completions: Attach wellbore diagram of proposed completion or recompletion.

New Drill, Lined:

Burlington Resources proposes to construct a new drilling pit and an associated vent/flare pit. Based on Burlington's interpretation of the Ecosphere's risk ranking criteria, the new drilling pit will be a lined pit as detailed in Burlington's Revised Drilling / Workover Pit Construction / Operation Procedures dated November 11, 2004 on file at the NMOCD office. A portion of the vent/flare pit will be designed to manage fluids and that portion will be lined as per the risk ranking criteria. Burlington Resources anticipates closing these pits according to the Drilling / Workover Pit Closure Procedure dated August 2, 2004 on file at the NMOCD office.

I hereby certify that the information above is true and complete to the best of my knowledge and belief. I further certify that any pit or below-grade tank has been/will be constructed or closed according to NMOCD guidelines ☐, a general permit ☒ or an (attached) alternative OCD-approved plan ☐.

SIGNATURE

TITLE

Regulatory Assistant II

DATE

2/3/2006

Type or print name
For State Use Only

Amanda Sandoval

E-mail address:

asandoval@br-inc.com

Telephone No.

505-326-9891

APPROVED BY

TITLE

DEPUTY OIL & GAS INSPECTOR, DIST. IV

DATE

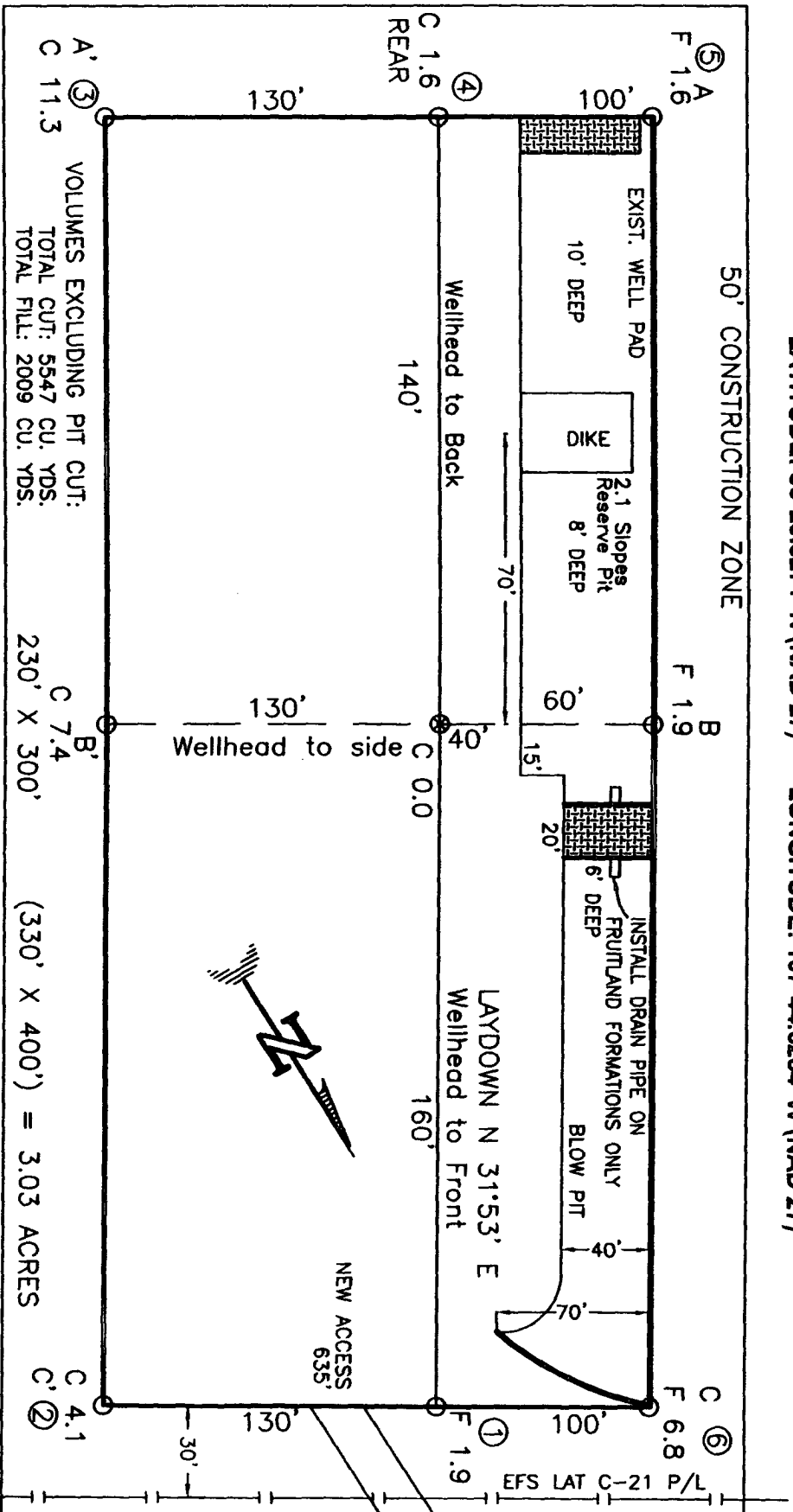
FEB 27 2006

Conditions of Approval (if any):

HUERFANTO UNIT 92F, 660 FSL 1615 FWL

GROUND ELEVATION: 6335. DATE: JANUARY 6, 2006

LONGITUDE: 107°44.6284' W (NAD 27)



RESERVE PIT DIKE: TO BE 8' ABOVE DEEP SIDE (OVERFLOW - 3' WIDE AND 1' ABOVE SHALLOW SIDE).
BLOW PIT: OVERFLOW PIPE HALFWAY BETWEEN TOP AND BOTTOM AND TO EXTEND OVER PLASTIC LINER AND INTO BLOW PIT.

NOTE: DAGGETT ENTERPRISES, INC. IS NOT LIABLE FOR UNDERGROUND UTILITIES OR PIPELINES. NEW MEXICO ONE CALL TO BE NOTIFIED 48 HOURS PRIOR TO EXCAVATION OR CONSTRUCTION.

NOTE: ESTIMATED VOLUMES CALCULATED BY AVERAGE
END AREA AT CROSS-SECTION SHOWN

NOTE: CONTRACTOR SHOULD CALL ONE-CALL FOR LOCATION OF ANY MARKED OR UNMARKED BURIED PIPELINES OR CABLES ON WELL PAD AND OR ACCESS ROAD AT LEAST TWO (2) WORKING DAYS PRIOR TO CONSTRUCTION



Daggett Enterprises, Inc.

Surveying and Oil Field Services
P. O. Box 15068 • Farmington, NM 87401
Phone (505) 326-1772 • Fax (505) 326-6019

NEW MEXICO L.S. 14831

DEWITT BR: B.L.
Account: BPC-000

DATE 12/20/05

BURLINGTON RESOURCES OIL & GAS COMPANY LP

HUERFANITO UNIT 92F, 660 FSL 1615 FWL

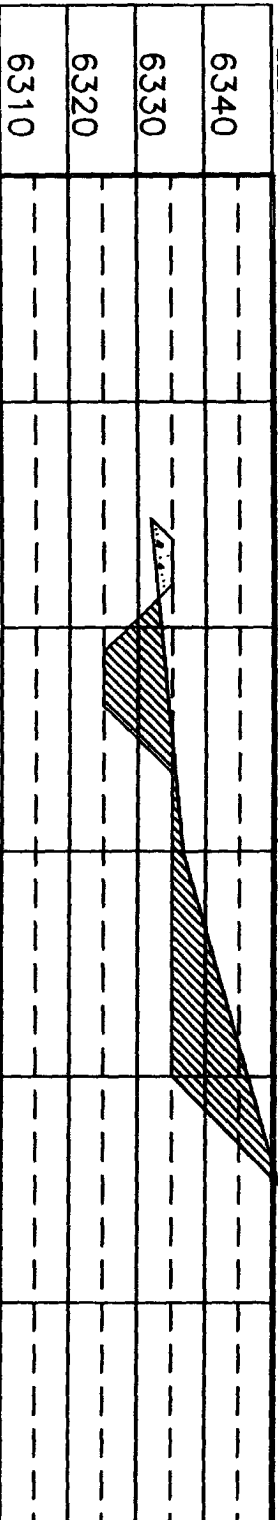
SECTION 12, T-26-N, R-9-W, N.M.P.M., SAN JUAN COUNTY, NEW MEXICO

GROUND ELEVATION: 6335, DATE: JANUARY 6, 2006

LATITUDE: 36°29.8271' N (NAD 27) LONGITUDE: 107°44.6284' W (NAD 27)

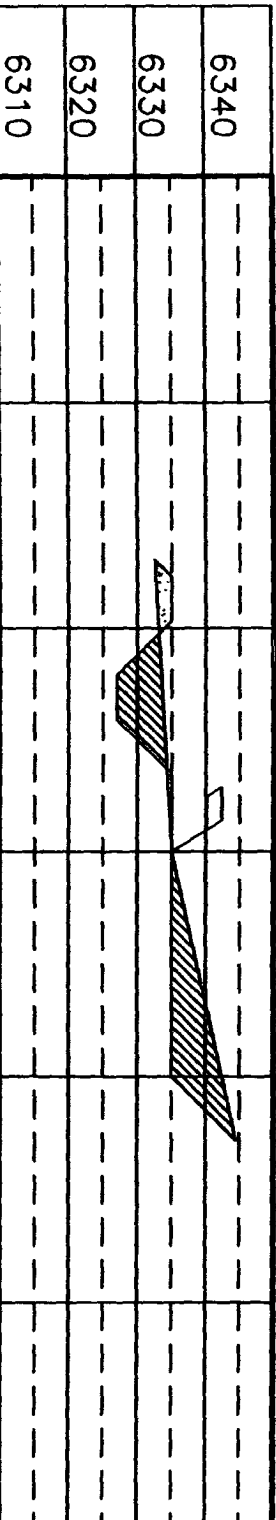
ELEV. A-A'

C/L



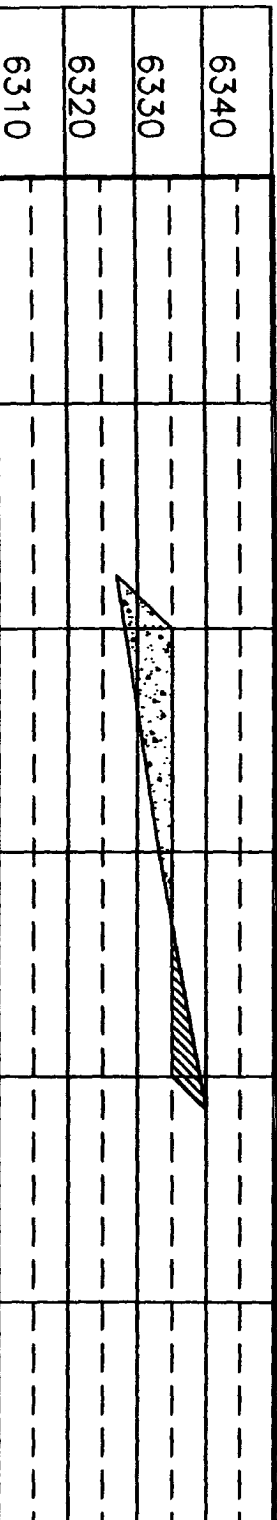
ELEV. B-B'

C/L



ELEV. C-C'

C/L



NOTE: DAGGETT ENTERPRISES, INC. IS NOT LIABLE FOR


UNDERGROUND UTILITIES OR PIPELINES. NEW MEXICO

ONE CALL TO BE NOTIFIED 48 HOURS PRIOR TO

EXCAVATION OR CONSTRUCTION.

NOTE: CONTRACTOR SHOULD CALL ONE-CALL FOR LOCATION OF ANY MARKED OR UNMARKED BURIED PIPELINES OR CABLES ON WELL PAD AND OR ACCESS ROAD AT LEAST TWO (2) WORKING DAYS PRIOR TO CONSTRUCTION.

DATE: 01/16/06	DATE: 12/25/05
WELL NUMBER: 6335	WELL NUMBER: 6335
DATE: 01/16/06	DATE: 12/25/05
DATE: 01/16/06	DATE: 12/25/05



Daggett Enterprises, Inc.
Surveying and Oil Field Services
P. O. Box 15068 • Farmington, NM 87401
Phone (505) 326-1772 • Fax (505) 326-6019
NEW MEXICO U.S. 14831

OPERATIONS PLAN

Well Name: HUERFANITO UNIT 92F
Location: 660' FSL & 1615' FWL, Section Sec 12 T26N R09W
San Juan County, New Mexico
Formation: Basin Dakota
Elevation: 6341' GL

<u>Formation Tops:</u>	<u>Top</u>	<u>Bottom</u>	<u>Contents</u>
Surface	San Jose	1253'	
Ojo Alamo	1253'	1370'	aquifer
Kirtland	1370'	1938'	gas
Fruitland Coal	1938'	2058'	gas
Pictured Cliffs	2058'	2155'	gas
Lewis	2155'	2498'	
Huerfanito Bentonite	2498'		
Chacra	2943'	3628'	gas
Massive Cliff House	3628'	3720'	gas
Menefee	3720'	4388'	gas
Massive Point Lookout	4388'	4733'	gas
Mancos Shale	4733'	5510'	
Upper Gallup	5510'	6354'	gas
Greenhorn	6354'	6411'	gas
Graneros	6411'	6436'	gas
Two Wells	6436'	6526'	gas
Paguate	6526'	6591'	gas
Cubero	6591'	6647'	gas
Encinal	6647'	6634'	gas
Total Depth:	6634'		gas

Logging Program:

Mud Logs/Coring/DST

Mud logs - none
Coring - none
DST - none
Open hole - none
Cased hole - Gamma Ray, CBL - surface to TD

Mud Program:

<u>Interval</u>	<u>Type</u>	<u>Weight</u>	<u>Vis.</u>	<u>Fluid Loss</u>
0 - 120'	Spud MUD/Air/Air Mist	8.4 - 9.0	40 - 50	no control
120 - 2255'	LSND	8.4 - 9.0	30 - 60	no control
2255 - 6634'	Air/Air Mist/Nitrogen	n/a	n/a	n/a

Casing Program (as listed, the equivalent, or better):

<u>Hole Size</u>	<u>Depth Interval</u>	<u>Csg.Size</u>	<u>Wt.</u>	<u>Grade</u>
12 1/4"	0' - 120'	9 5/8"	32.3#	H-40
8 3/4"	0' - 2255'	7"	20/23#	J-55
6 1/4"	0' - 6634'	4 1/2"	10.5#	J-55

Tubing Program:

<u>Depth Interval</u>	<u>Csg.Size</u>	<u>Wt.</u>	<u>Grade</u>
0' - 6634'	2 3/8"	4.7#	J-55

BOP Specifications, Wellhead and Tests:**Surface to Intermediate TD -**

11" 2000 psi minimum double gate BOP stack (Reference Figure #1). After nipple-up prior to drilling out surface casing, ~~rams~~ and casing will be tested to 600 psi for 30 minutes.

BOP

Intermediate TD to Total Depth -

11" 2000 psi minimum double gate BOP stack (Reference Figure #1). After nipple-up prior to drilling out intermediate casing, ~~rams~~ and casing will be tested to 1500 psi for 30 minutes.

BOP

Surface to Total Depth -

2" nominal, 2000 psi minimum choke manifold (Reference Figure #3).

Completion Operations -

7 1/16" 2000 psi double gate BOP stack (Reference Figure #2). After nipple-up prior to completion, pipe rams, casing and liner top will be tested to 2000 psi for 15 minutes.

Wellhead -

9 5/8" x 7" x 4 1/2" x 2 3/8" x 2000 psi tree assembly.

General -

- Pipe rams will be actuated once each day and blind rams will be actuated once each trip to test proper functioning.
- An upper kelly cock valve with handle available and drill string valves to fit each drill string will be available on the rig floors at all times.
- BOP pit level drill will be conducted weekly for each drill crew.
- All BOP tests & drills will be recorded in daily drilling reports.
- Blind and pipe rams will be equipped with extension hand wheels.

Cementing:

9 5/8" surface casing -

Pre-Set Drilled - Cement with 23 sx Type I, II cement with 20% flyash mixed at 14.5 ppg, 1.61 cu ft per sack yield. (38 cu ft of slurry, bring cement to surface) Wait on cement for 24 hours for pre-set holes before pressure testing or drilling out from under surface.

Conventionally Drilled - Cement with 88 sx Type III cement with 0.25 pps Celloflake, 2% CaCl. (113 cu ft of slurry, 200% excess, bring cement to surface) Wait on cement for 8 hrs for conventionally set holes before pressure testing or drilling out from under surface. Wait on cement appropriate time until cement achieves 250 psi compressive strength at 60 degrees F. prior to nipple up of BOPE. Wait on cement for 8 hrs for conventionally set holes before pressure testing or drilling out from under surface. Test casing to 600 psi for 30 minutes.

Saw tooth guide shoe on bottom. Bowspring centralizers will be run in accordance with Onshore Order #2.

7" intermediate casing -

Lead with 177 sacks Premium Lite cement with 3% calcium chloride, 0.25 pps Celloflake, 5 pps LCM-1, 0.4% fluid loss, 0.4% sodium metasilicate. Tail w/90 sacks Type III cmt w/1% calcium chloride, 0.25 pps Celloflake, 0.2% fluid loss (124 cu ft 50% excess to circulate to surface). WOC minimum of 8 hours before drilling out intermediate casing. If cement does not circulate to surface, a CBL or a temperature survey will be run to determine TOC. Test casing to 1500 psi for 30 minutes.

7" intermediate casing alternative two stage -

Stage collar set 300' above the top of the Fruitland. First stage: Lead w/7 sacks Premium Lite cement with 3% calcium chloride, .25 pps celloflake, 5 pps LCM-1, 0.4% fluid loss. Tail w/90 sxs Type III cmt w/1% calcium chloride, 0.25 pps Celloflake, 0.2% fluid loss. Second stage: 170 sacks Premium Lite cement with 3% calcium chloride, .25 pps celloflake, 5 pps LCM-1, 0.4% fluid loss, 0.4% sodium metasilicate (362 cu ft - 50% excess to circulate to surface).

Cement nose guide shoe on bottom with float collar spaced on top of shoe joint. Bowspring centralizers spaced every other joint off bottom, to the base of the Ojo Alamo @ 1370'. Two turbolating centralizers at the base of the Ojo Alamo @ 1370'. Bowspring centralizers spaced every fourth joint from the base of the Ojo Alamo to the base of the surface casing.

4 1/2" Production Casing -

Pump 287 sxs Premium Lite HS FM w/0.25 pps celloflake, 0.3% CD-32, 6.25 pps LCM-1, 1% fluid loss, 6% gel, 7 pps CSE (568 cu.ft., 30% excess to achieve 100' overlap in 4-1/2" x 7" annulus). WOC a minimum of 18 hrs prior to completing.

Cementing: Continued

Cement float collar stacked on top of float shoe.

Note: If open hole logs are run, cement volumes will be based on 25% excess over caliper volumes.

Cement nose guide shoe on bottom with float collar spaced on top of shoe joint. The liner hanger will have a rubber packoff.

- If hole conditions permit, an adequate water spacer will be pumped ahead of each cement job to prevent cement/ mud contamination or cement hydration.

Special Drilling Operations (Air/Mist Drilling):

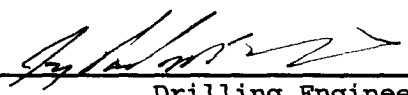
The following equipment will be operational while air/mist drilling:

- An anchored blooie line will be utilized to discharge all cuttings and circulating medium to the blow pit a minimum of 100' from the wellhead.
- The blooie line will be equipped with an automatic igniter or pilot light.
- Compressors will be located a minimum of 100' from the wellhead in the opposite direction from the blooie line.
- Engines will have spark arresters or water cooled exhaust.
- The rotating head will be properly lubricated and maintained.
- A float valve will be utilized above the bit.
- Mud circulating equipment, water, and mud materials will be sufficient to maintain control of the well.

Additional Information:

- The Mesa Verde and Dakota formations will be completed and commingled.
- No abnormal temperatures or hazards are anticipated.
- Anticipated pore pressures are as follows:

Fruitland Coal	300 psi
Pictured Cliffs	600 psi
Mesa Verde	700 psi
Dakota	2000 psi
- Sufficient LCM will be added to the mud system to maintain well control, if lost circulation is encountered below the top of the Pictured Cliffs.
- The South half of Section 12 is dedicated to the Dakota formation.
- This gas is dedicated.



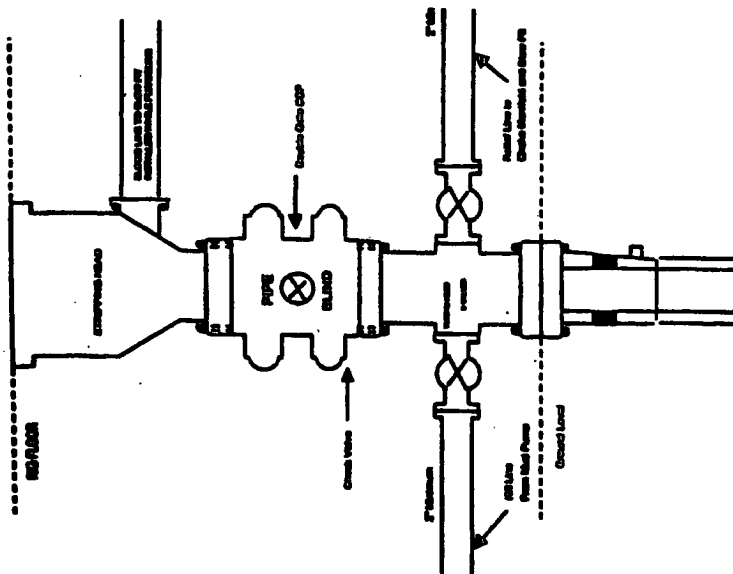
Drilling Engineer

2/15/06

Date

BURLINGTON RESOURCES

Completion/Motover Rig
BOP Configuration
2,000 psi System



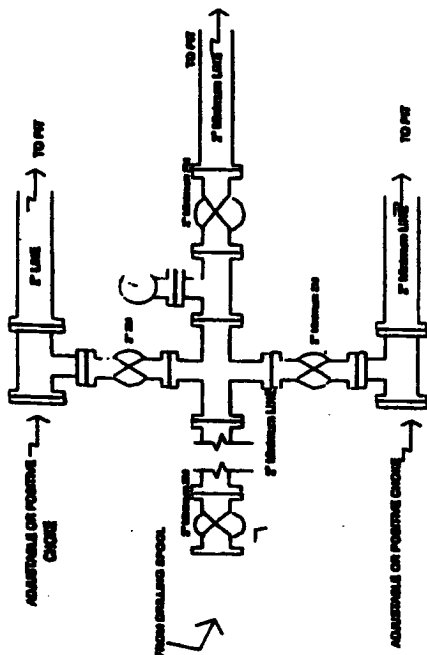
Minimum BOP installation for all Completion/Motover Operations. 7-1/16" bore, 2000 psi minimum working pressure double gate BOP to be equipped with blind and pipe rams. A stripping head to be installed on the top of the BOP. All BOP equipment is 2000 psi working pressure or greater excluding 5000 psi stripping head.

Figure #2

4-20-01

BURLINGTON RESOURCES

Drilling Rig
Choke Manifold Configuration
2000 psi System



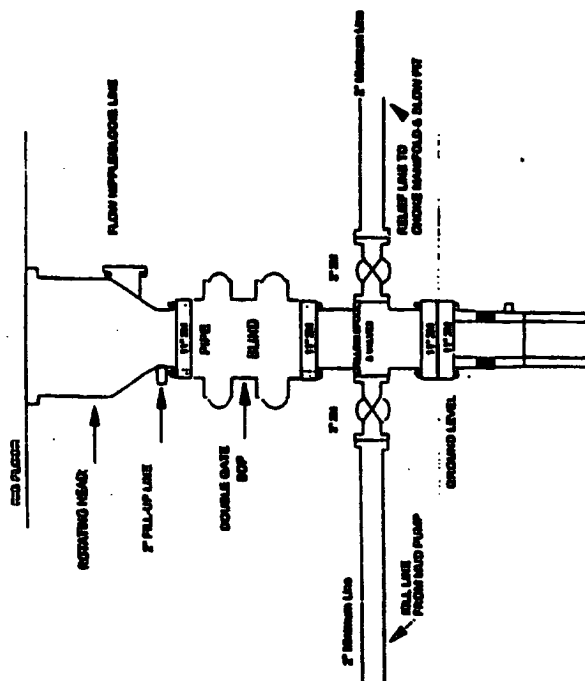
Choke manifold installation from Surface Casing Point to Total Depth. 2,000psi working pressure equipment with two chokes.

Figure #3

4-20-01

Burlington Resources

Drilling Rig
2000 psi System



BOP installation from Surface Casing Point to Total Depth. 11\"/>

Figure #1