

NE Chaco Com Unit #254H

Chaco Unit NE HZ (page 1)

Spud: 1/21/15

Completed: 7/2115

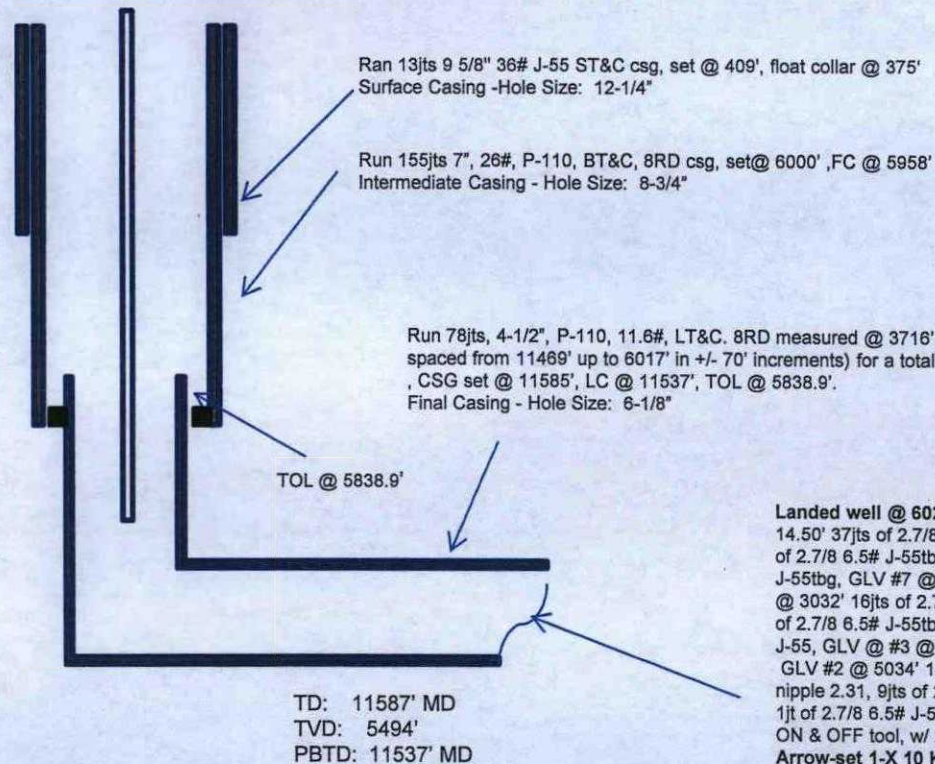
SHL: 1325' FSL & 250' FWL
NW/4 SW/4 Section 5(L), T23N, R6W

BHL: 2206' FNL & 246' FEL
SE/4 NE/4 Section 1 (H), T23N, R7W

Rio Arriba, NM
Elevation: 6830'
API: 30-039-31289

Tops	MD	TVD
Ojo Alamo	1414	1407
Kirtland	1704	1694
Picture Cliffs	2007	1993
Lewis	2112	2097
Chacra	2451	2432
Cliff House	3562	3533
Menefee	3592	3563
Point Lookout	4294	4258
Mancos	4522	4484
Gallup	4927	4886

CONFIDENTIAL



Landed well @ 6026'. Land tbg. as follows: Hanger, KB 14.50' 37jts of 2.7/8" 6.5# J-55tbg, GLV #9 @ 1166' 24jts of 2.7/8 6.5# J-55tbg GLV #8 @ 1912' 20jts of 2.7/8 6.5# J-55tbg, GLV #7 @ 2533' 16jts 2.7/8 6.5# J-55tbg, GLV #6 @ 3032' 16jts of 2.7/8 6.5# J-55tbg, GLV #5 @ 3533' 16jts of 2.7/8 6.5# J-55tbg, GLV #4 @ 4034' 16jts of 2.7/8 6.5# J-55, GLV #3 @ 4536' 16jts of 2.7/8 6.5# J-55tbg, GLV #2 @ 5034' 14jts of 2.7/8 6.5# J-55tbg, 5470' pro-nipple 2.31, 9jts of 2.7/8 6.5# J-55tbg, GLV #1 @ 5754' 1jt of 2.7/8 6.5# J-55tbg, @ 5785' 4' pup jt, 7" X 2.7/8 T-2 ON & OFF tool, w/ 2.25 F-nipple, @ 5791', 7" X 2.7/8 Arrow-set 1-X 10 K packer, @ 5798' X over 6jts 2.375tbg, @ 5991' 2.375 X 1.87" X Nipple @ 5993' 1jt of 2.375 4.7# J-55tbg, @ 6025' 2.375 1/2 mule shoe @ 6026' EOT, Packer was set @ 10K tension, Total 185jts of 2.7/8 6.5# J-55tbg 8rd, Total 7jts 2.375 4.7# J-55 EUE 8rd 64° degrees.

HOLE SIZE	CASING	CEMENT	VOLUME	CMT TOP
12-1/4"	9-5/8"	245 sx	222 cu.ft.	Surface
8-3/4"	7"	1147sx	1642cu. ft.	Surface
6-1/8"	4-1/2"	755sx	957cu. ft.	TOL @ 5838.9'

OIL CONS. DIV DIST. 3

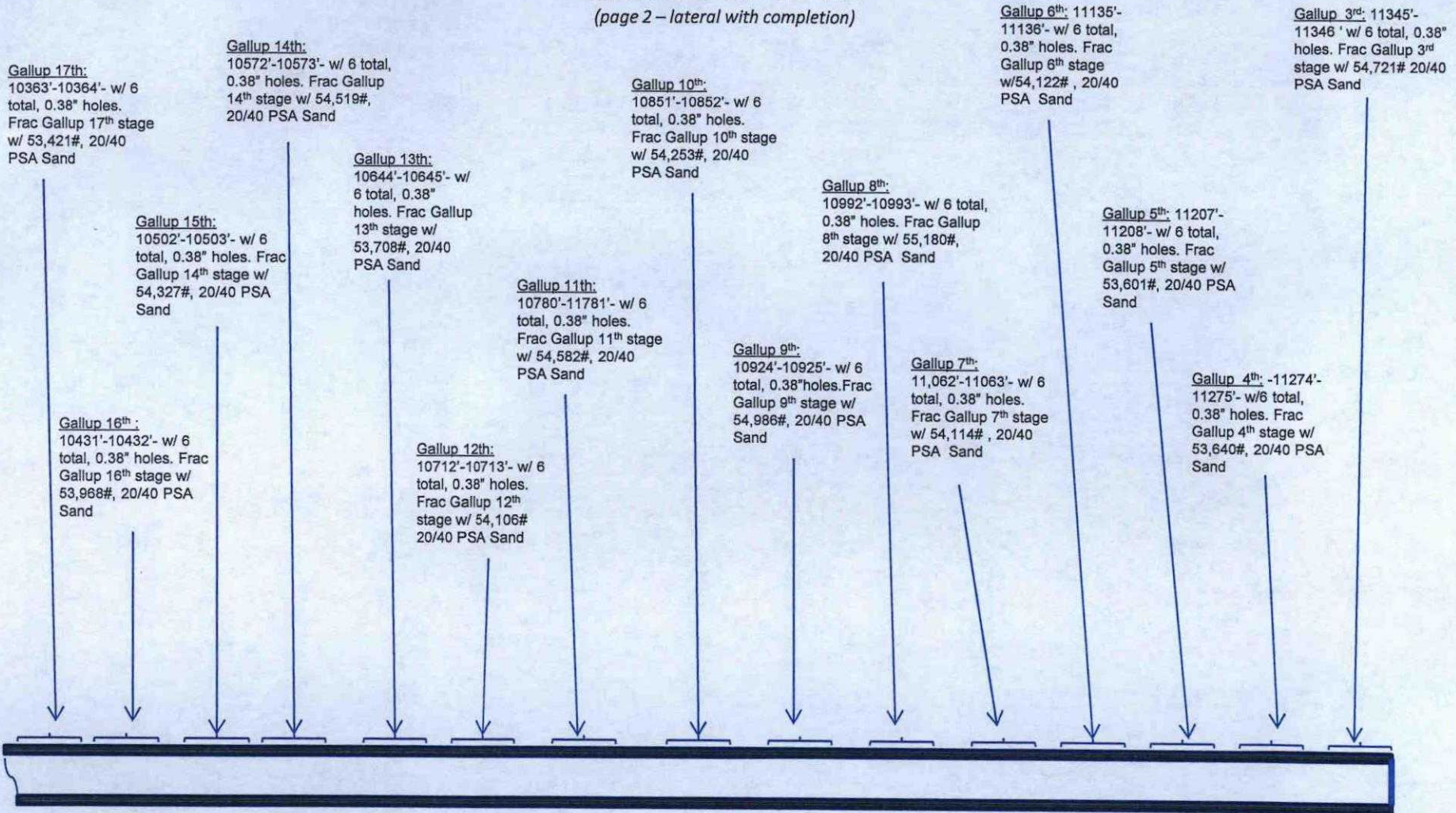
AUG 04 2015

mj 5/21/15

AV

NE Chaco Com #254H Chaco Unit NE HZ

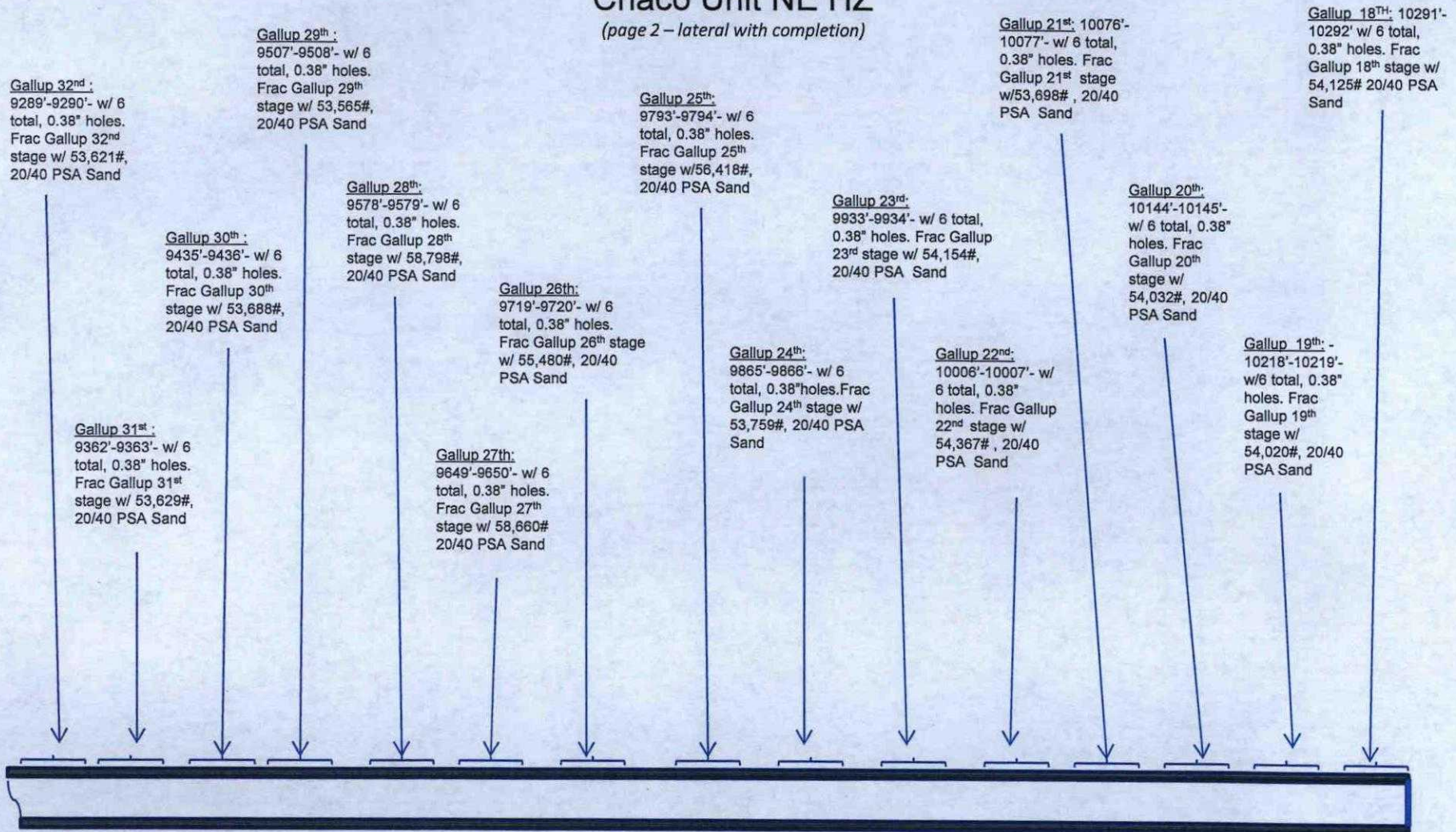
(page 2 – lateral with completion)



See page 1 for upper portion of hole

NE Chaco Com #254H Chaco Unit NE HZ

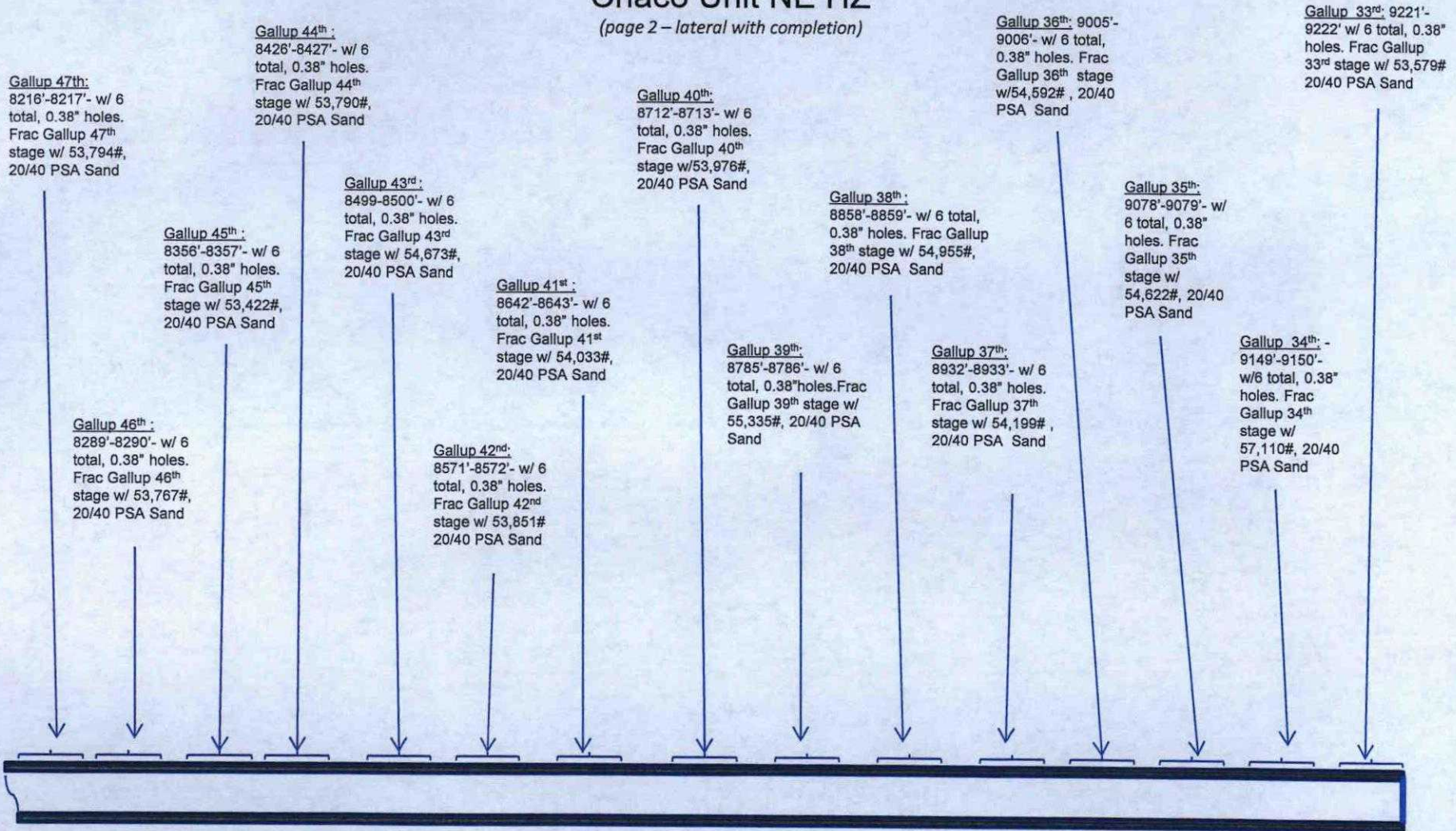
(page 2 – lateral with completion)



See page 1 for upper portion of hole

NE Chaco Com #254H Chaco Unit NE HZ

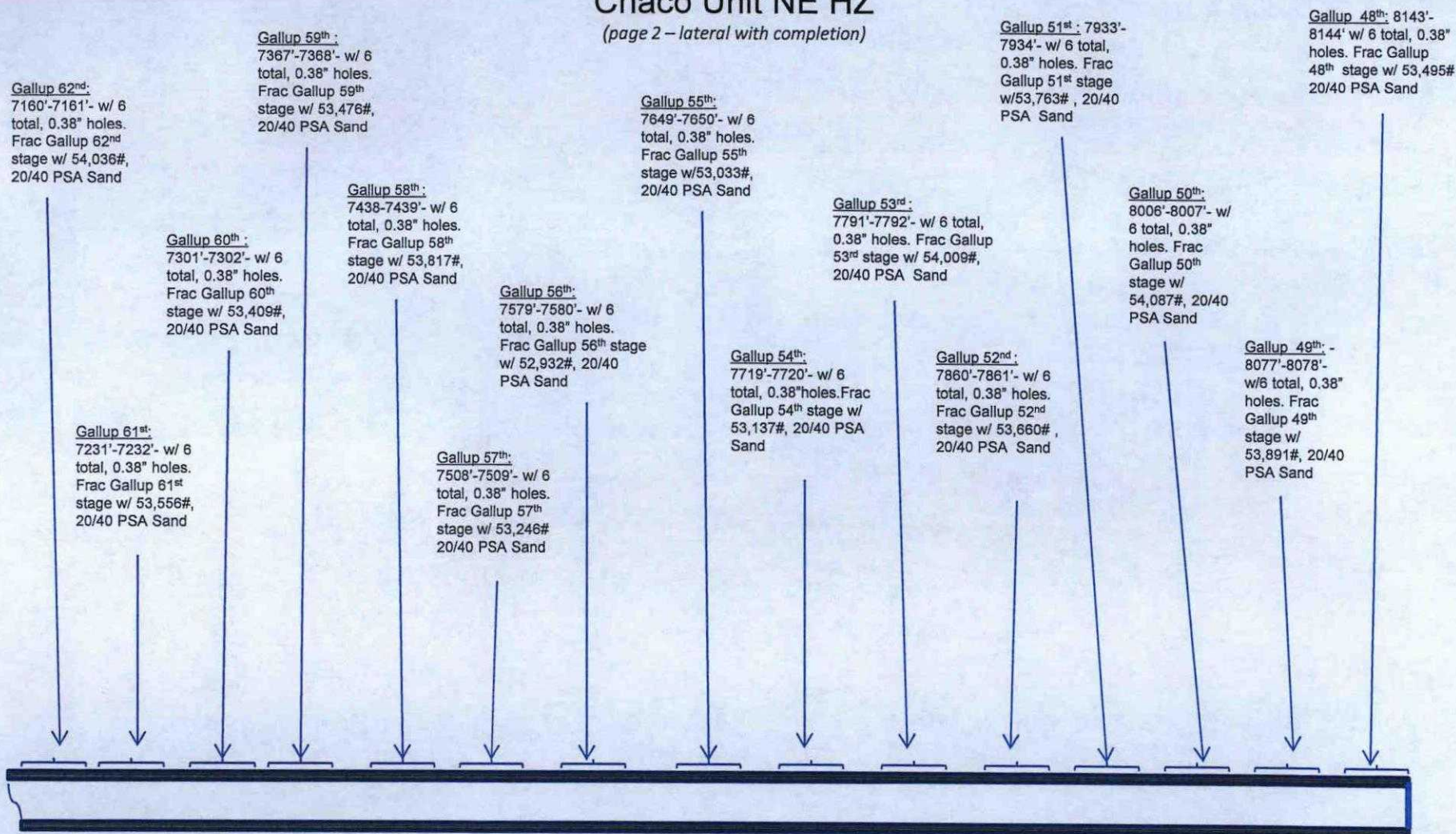
(page 2 – lateral with completion)



See page 1 for upper portion of hole

NE Chaco Com #254H Chaco Unit NE HZ

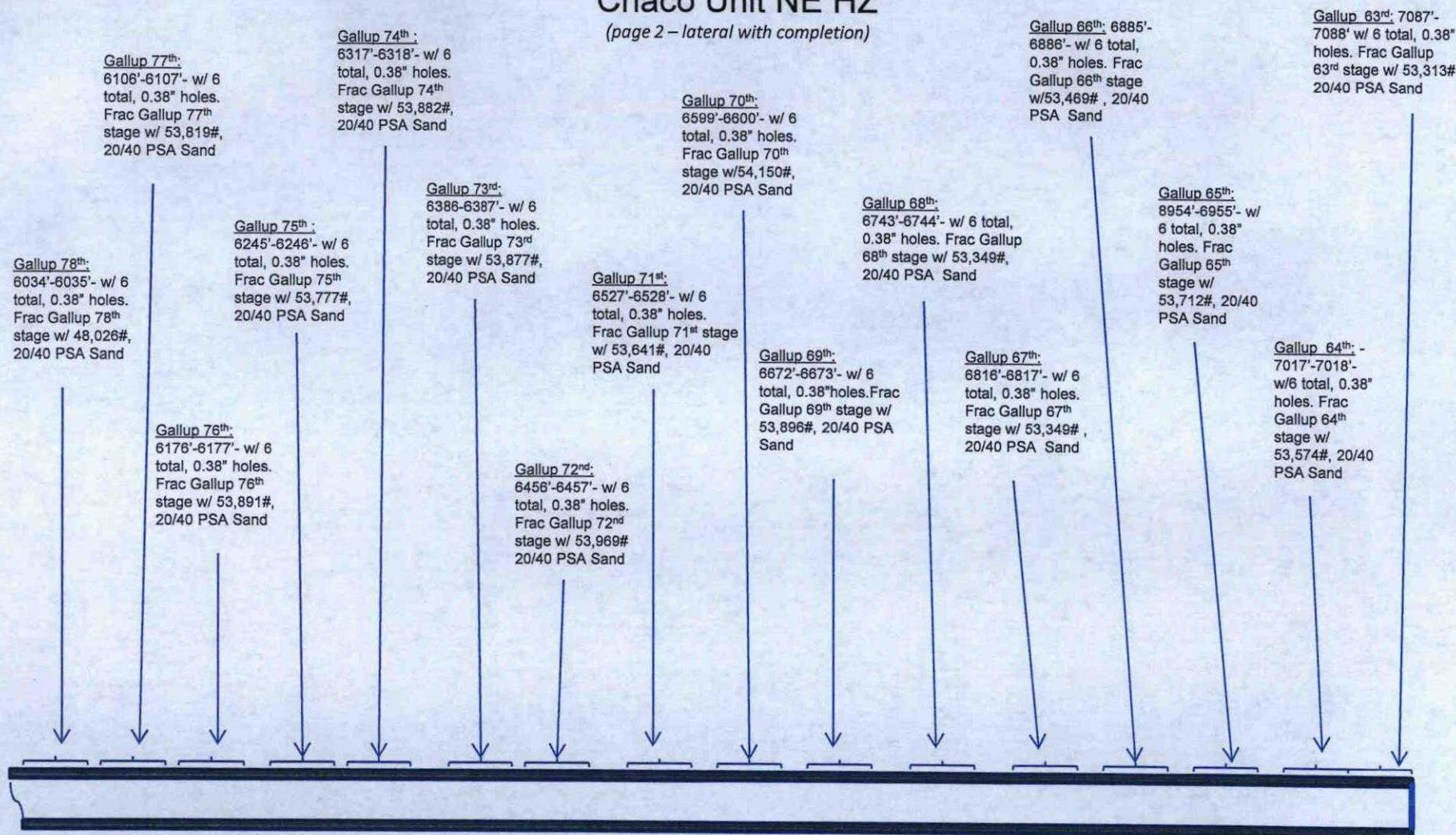
(page 2 – lateral with completion)



See page 1 for upper portion of hole

NE Chaco Com #254H Chaco Unit NE HZ

(page 2 – lateral with completion)



See page 1 for upper portion of hole