

Submit 1 Copy To Appropriate District Office
District I - (575) 393-6161
1625 N. French Dr., Hobbs, NM 88240
District II - (575) 748-1283
811 S. First St., Artesia, NM 88210
District III - (505) 334-6178
1000 Rio Brazos Rd., Aztec, NM 87410
District IV - (505) 476-3460
1220 S. St. Francis Dr., Santa Fe, NM 87505

State of New Mexico
Energy, Minerals and Natural Resources

Form C-103
Revised August 1, 2011

OIL CONSERVATION DIVISION
1220 South St. Francis Dr.
Santa Fe, NM 87505

WELL API NO. 30-045-21533

5. Indicate Type of Lease
STATE ☒ FEE ☐

6. State Oil & Gas Lease No.
EO-1200-0002

7. Lease Name or Unit Agreement Name
Jaques Com

8. Well Number 1

9. OGRID Number 131994

10. Pool name or Wildcat
Otero Chacra

SUNDRY NOTICES AND REPORTS ON WELLS

(DO NOT USE THIS FORM FOR PROPOSALS TO DRILL OR TO DEEPEN OR PLUG BACK TO A DIFFERENT RESERVOIR. USE "APPLICATION FOR PERMIT" (FORM C-101) FOR SUCH PROPOSALS.)

1. Type of Well: Oil Well ☐ Gas Well ☒ Other

2. Name of Operator Four Star Gas & Oil Company

3. Address of Operator
ATTN: Permitting Specialist 332 Road 3100 Aztec, New Mexico 87410

4. Well Location

Unit Letter O : 1060 feet from the South line and 1730 feet from the East line
Section 2 Township 27N Range 9W NMPM County San Juan

11. Elevation (Show whether DR, RKB, RT, GR, etc.)
6154' GL

12. Check Appropriate Box to Indicate Nature of Notice, Report or Other Data

NOTICE OF INTENTION TO:

PERFORM REMEDIAL WORK ☐ PLUG AND ABANDON ☐
TEMPORARILY ABANDON ☐ CHANGE PLANS ☐
PULL OR ALTER CASING ☐ MULTIPLE COMPL ☐
DOWNHOLE COMMINGLE ☐
OTHER: ☐

SUBSEQUENT REPORT OF:

REMEDIAL WORK ☐ ALTERING CASING ☐
COMMENCE DRILLING OPNS. ☐ P AND A ☒
CASING/CEMENT JOB ☐
OTHER: ☐

13. Describe proposed or completed operations. (Clearly state all pertinent details, and give pertinent dates, including estimated date of starting any proposed work). SEE RULE 19.15.7.14 NMAC. For Multiple Completions: Attach wellbore diagram of proposed completion or recompletion.

The plug and abandonment of the Jaques Com 1 was completed 9/23/15.

9/8/2015 MIRU. Csg flowing, tie into tbg, pump 20 bfw, while csg flows oil out of well, Pump 10 bfw down csg to kill. Remove packoff gland, PU and pull slips, Install 5 1/2" x 7 1/16" companion flange (thread by flange), 7 1/16 5K x 4 1/16 10 K BOP's, stump tested w/ 1" pipe rams. Install Stripper head, POOH, LD 108 jts 1" tbg, tbg, scale starting around 2442', heavy scale around 2975' to end of tbg, no pin showing on last jt, last 5 jts plugged, SDFN

9/9/2015 RIH in singles w/ 2.3" junk mill on 1 1/2" MT workstring to 3209', did not tag, top perf @ 3198' POOH w/ 1 1/2" workstring and mill. R/U Cutters WL, RIH w/ 2.25" Gauge Ring to 3209', POOH, PU CIBP. RIH w/ same, Saw FL @ 1850', Set CIBP @ 3145' (collar at 3151, POOH Load csg w/10 bfw, pump in @ 1 bpm @ 500 psi, SD Pump, drop to 200 immed, 5 min 180 psi, 10 min 150 psi. Still gas, air in system, leak somewhere.

RIH w/1-11/16" CBL tools, Log well from 3145 to surface. Top off well @ 1700 hrs, Took 0.6 bbls to load, WL Eng not comfortable w/log, too much air, gas pockets, repeat log in A.M. SDFN. See attached for remainder of procedure.

Spud Date:

12/17/1974

Rig Release Date:

OIL CONS. DIV DIST. 3

OCT 03 2015

PNR only

I hereby certify that the information above is true and complete to the best of my knowledge and belief.

SIGNATURE April E. Pohl TITLE Permitting Specialist DATE 9/30/15

Type or print name April E. Pohl E-mail address: April.Pohl@chevron.com PHONE: 505-333-1941

For State Use Only

DEPUTY OIL & GAS INSPECTOR

APPROVED BY: [Signature] TITLE DISTRICT #3 DATE 11/10/15

Conditions of Approval (if any):

Approved for plugging of wellbore only.
Liability under bond is retained pending
Receipt of C-103 (Subsequent Report of Well
Plugging) which may be found @ OCD web
page under forms
www.emnrd.state.us/ocd

- 9/10/2015 Check well, slight vac. Load hole w/ 0.7 bbls, RIH w/1-11/16" CBL tools, Log well from 3145' to surface, Sent logs to Eng & State for review. RIH w/1-1/2" MT workstring to 3140. RU Baker Cmt Equipment
Test lines, Pump 5 bfw @ 0.8 bpm & 400 psi. Mix, pump 5.8 bbls CI G, 15.8 ppg, 1.15 cmt for balanced plug from 3140-2145', displace w/ 1.3 bfw, POOH, LD 1-1/2" workstring to 2159', reverse out w/ 2 bbls, lost returns, Switch, pump long way, Pumped 8 bbls fw @ 1 bpm & 677 drop to 550, partial returns, wtr cleaned up. POOH tbg. SDFN
- 9/11/2015 Load csg w/2 bbls, test to 500 psi. Drop to 200 psi immed, starts to level off, Bradenhead open while testing, saw no communication. RIH w/ 1 1/2" workstring, Tag cement @ 2600'
RU cmt equipment, test lines to 2500 psi, Pump 5 bfw. Mix, pump 5.8 bbls (28 sks) CI G, 15.8 ppg, 1.15 yld cement for balanced plug from 2600'-1600', displace w/0.8 bfw, pumping @ 0.7 bpm @ 400 psi. POOH, LD tbg to 1504'
Circulate long way @ 0.8 bpm & 460 psi, w/ 8 bfw. POOH w/ tbg. Secure well, going to days off.
- 9/14/2015 RU Hi-Tech Test Pump, load well w/1 bbl fw. Work air out of system, test to 520 psi, One min - 360 psi, 5 min - 140 psi, 10 min - 45 psi, 15 min - 20 psi. Repeated test w/ pump isolated, same results
- 9/18/2015 Load production csg w/ 1.0bbl fresh water & pressure test to 600psi - began pumping into formation. Establish injection rate of 0.3BPM @700psi, total 1.5bbl fresh water. Shut down - pressure fell to zero.
Spot in & R/U wireline unit. RIH w/ temperature survey tool & noise recording tool. Establish baseline temperature curve from surface to TOC - tagged at 1470'. Establish injection rate of 0.3BPM 700psi & pump 10bbls fresh water. Pull temp survey to surface - showed inflection at 1300'. R/D wireline unit.
RIH w/ 1-1/2" workstring, tag hard cement top at 1504' (tbg tally).
R/U cementers. Establish circulation w/ 2bbls fresh water, mix & pump 2.4bbls blended cement (15sx) at 1.5BPM, 300psi circulating pressure. Displace with 0.8bbls fresh water & let equilibrate. Pull tbg to 1097' & reverse clean getting back 0.5bbls cement slurry in returns. Shut in & pressure up to 520psi displacing with additional 0.5bbl fresh water. Shut down, pressure slowly bleeding off to 200psi then stabilizing. R/D cementers, left pressure on well. Calculated cement top @1200'.
- 9/19/2015 Pressure test csg to 500psi, started to establish injection. Pumped 0.5BPM @750psi, total 5bbls fresh water.
RIH & tag TOC @1284'.
POOH w/ 1.5" workstring. Spot in & R/U wireline unit.
RIH w/ 2-7/8" retainer - tool holds pressure from below but not from above. Correlate & set @1213'. R/D wireline.
RIH w/
POOH & lay down stinger. Visual inspection showed slight damage to metal end.
RIH open ended with 1.5" workstring to 1191'.
R/U
POOH w/ 1.5" workstring. SWIFN.
- 9/20/2015 Check well pressure: SICP 0psi, SI surface 0psi. P/U & RIH w/ 1.9" bladed bit on 1.5" workstring, tag TOC @1150'.
Pressure tested 2-7/8" csg to 500psi - lost 100psi in 2min.
POOH w/ bit.
RIH w/CBL, record from 1150' to surface. Compared results with CBL ran 9-10-15: showed slight difference from 1150' - 550' but indicated free pipe below 1100'.
R/U wireline. RIH w/ 1-11/16" deep penetrating charges loaded @4spf & perf 2' from 1135' - 1134'. POOH spent guns.
Pressured up to 1000psi - unable to inject. Pressure bleed off same as before, 100psi in 2min at 500psi.
Consult with NMOCD rep Paul Weibe (on location) & Brandon Powell (via phone).
RIH w/ 1-11/16" deep penetrating charges loaded at 4spf and perf from 1095' - 1094'. POOH spent guns.
Pressured up to 1000psi - unable to inject. Pressure bled off to 700psi in 2min, then same bleed off as before: 100psi in 2min.
Consult with NMOCD rep Paul Weibe (on location) & Brandon Powell (via phone) to approve balanced plug.
- RIH w/ 1.5" workstring to 1129'. Spot in & R/U cementers. Establish circulation w/ 1.0bbl fresh water @0.6BPM 200psi. Mix & pump 2.4bbls (15sx) blended cement 15.8ppg @0.6BPM 100psi, displace w/ 0.4bbls fresh water. Pull tbg to 756' & reverse clean getting back 0.25bbl cement in returns. R/D cementers.
POOH w/ 1.5" workstring. SWIFN.
- 9/21/2015 RIH w/ mule shoe on 1.5" workstring & tag TOC @1035' (min requirement is 895' by NMOCD). Pressure test csg to 500psi, lost 100psi in 2min.
R/U cementers. Pressure test lines to 2000psi. Establish circulation w/ 1.0bbl fresh water at 0.9BPM 200psi. Mix & pump 1.6bbls 15.8ppg blended cement mixed w/ 2% CaCl & displace w/ 0.5bbl fresh water.

POOH to 767' & circulate clean conventionally. Recovered estimated 0.2bbls cement in returns.

Mix & pump 1.0bbl 15.8ppg blended slurry mixed w/ 2% CaCl, displace w/ 0.2bbl fresh water. Total cement pumped: 2.6bbls (13sx).

POOH to 569' & circulate clean conventionally. Trace cement in returns. POOH w/ 1.5" workstring. SWIFN.

9/22/2015 RIH w/ mule shoe & tag TOC @931' (minimum 895' by NMOCD requirement). Pressure tested csg to 500psi, lost 100psi in 2 min.

Consult with NMOCD rep on location, Paul Weibe & NMOCD office (via phone). Approved plan to spot additional balanced plug & continue with surface csg abandonment.

R/U cementers. Establish circulation w/ 1.0bbl fresh water. Mix & pump 1.5bbls blended cement slurry w/ 2% CaCl @0.8BPM 150psi. Displace w/ 0.4bbls fresh water. POOH w/ 1.5" workstring to 646' & reverse clean.

Finish POOH w/ 1.5" workstring.

R/U wireline unit. RIH & perforate 2-7/8" csg @186' - 188' w/ 4spf (surface shoe @136'). POOH spent guns.

Establish circulation. Took 2.5 bbls to catch circulation, then circulated w/ 15bbls fresh water @3BPM 50psi. R/D floor, N/D BOP's, N/U top flange.

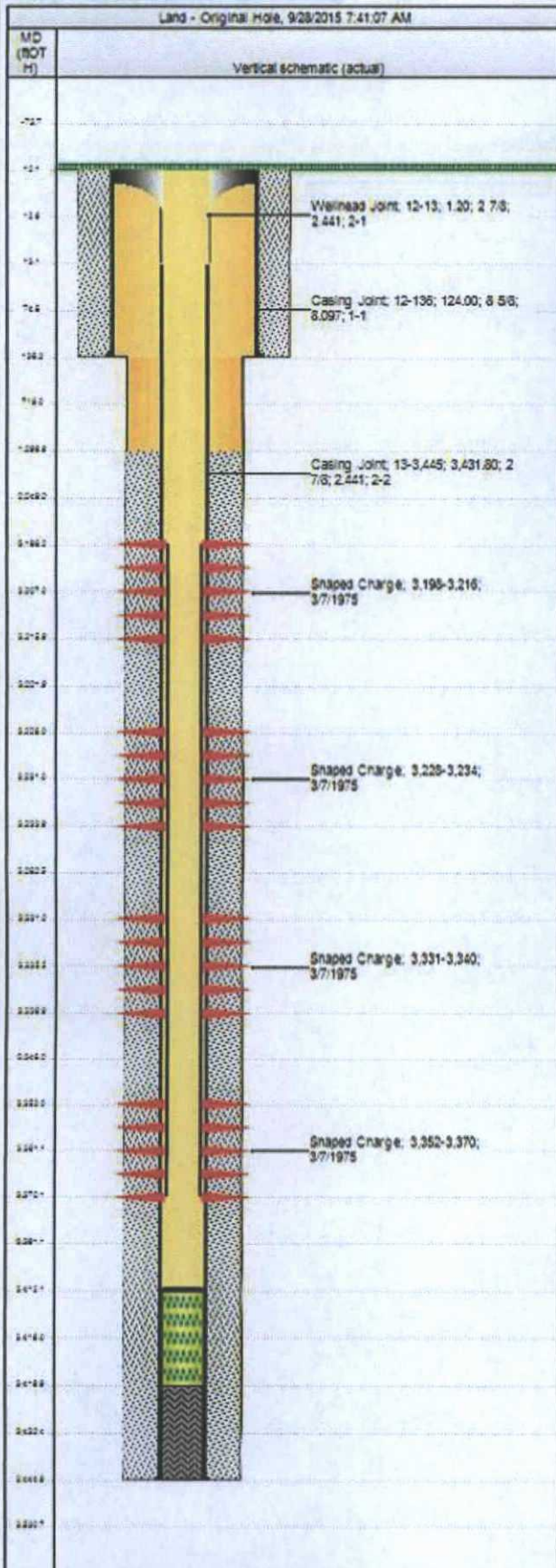
R/U cementers. Circulate w/ 1.0bbl fresh water, mix & pump 11.5bbls 15.8ppg blended cement w/ 2% CaCl, recovered 0.5bbls in reverse tank. Shut down.

9/23/2015 RDMO. Spot in welder & backhoe. Check well pressure: SICP 0psi, Surface 0psi. Open 2-7/8" csg & tag TOC @26ft with tally tape. Excavate around wellbore & cut wellhead at 4ft. Cement at surface on 2-7/8" x 8-5/8" annulus. Fill 2-7/8" csg w/ 6 gal cement. Weld on plate & P/A marker.



Wellbore Schematic

Well Name Jacquez Com 01	Lease Jacquez	Field Name Otero (Chacra)	Business Unit Mid-Continent
-----------------------------	------------------	------------------------------	--------------------------------



Job Details					
Job Category			Start Date		Release Date
Abandon			9/8/2015		9/22/2015
Casing Strings					
Csg Des	OD (in)	Wt/Len (lb/ft)	Grade	Top Thread	Set Depth (MD) (ft)
Surface	8 5/8	24.00	K-55		136
Production Casing	2 7/8	6.40	J-55		3,445
Perforations					
Date	Top (ft)	Bot (ft)	Shot Dens (shots/ft)	Entered Shot Total	Zone & Completion
3/7/1975	3,198.0	3,216.0	2.0	36	Chacra, Original Hole
3/7/1975	3,228.0	3,234.0	2.0	12	Chacra, Original Hole
3/7/1975	3,331.0	3,340.0	2.0	18	Chacra, Original Hole
3/7/1975	3,352.0	3,370.0	2.0	36	Chacra, Original Hole
Other Strings					
Run Date	Pull Date	Set Depth (ft)	Com		
Other In Hole					
Des	Top (ft)	Bot (ft)	Run Date	Pull Date	Com
Fill (Sand / Mud / Debris)	3,412.0	3,420.0	7/17/1993		

CEMENT JOB REPORT



CUSTOMER CHEVRON CORPORATION		DATE 18-SEP-15		F.R. # 10011177230		SERV. SUPV. SIARHEI DZMITRIYEV	
LEASE & WELL NAME JAQUES COM #1 - API 30045215330000		LOCATION 20-27N-9W		COUNTY-PARISH-BLOCK San Juan New Mexico			
DISTRICT Farmington		DRILLING CONTRACTOR RIG # ALLIANCE 8		TYPE OF JOB Plug & Abandon			

SIZE & TYPE OF PLUGS		LIST-CSG-HARDWARE		MECHANICAL BARRIERS		MD	TVD	HANGER TYPES		MD	TVD
		NA-P&A									

MATERIALS FURNISHED BY BJ		LAB REPORT NO.	PHYSICAL SLURRY PROPERTIES						
			SACKS OF CEMENT	SLURRY WGT PPG	SLURRY YLD FT	WATER GPS	PUMP TIME HR:MIN	Bbl SLURRY	Bbl MIX WATER
Fresh Water				8.34				2.5	
Class G Blend			55	15.8	1.15	4.97		0	0
Fresh Water				8.34				0.8	
Fresh Water				8.34				3.75	
Class G Blend		4534	289	15.8	1.15	4.97		2.4	1.39
Available Mix Water		200 Bbl.	Available Displ. Fluid		200 Bbl.	TOTAL		9.45	1.39

HOLE			TBG-CSG-D.P.					COLLAR DEPTHS				
SIZE	% EXCESS	DEPTH	ID	OD	WGT.	TYPE	MD	TVD	GRADE	SHOE	FLOAT	STAGE
6.75	0	3225	1.462	1.9	4.19	TBG	1504	1504	J-55			

LAST CASING				PKR-CMT RET-BR PL-LINER		PERF. DEPTH		TOP CONN		WELL FLUID			
ID	OD	WGT	TYPE	MD	TVD	BRAND & TYPE	DEPTH	TOP	BTM	SIZE	THREAD	TYPE	WGT.
2.4	2.875	6.5	CSG	1504	1504			1300	1300	2.375	EUE	FRESH WATER	8.34

DISPL. VOLUME		DISPL. FLUID		CAL. PSI	CAL. MAX PSI	OP. MAX	MAX TBG PSI		MAX CSG PSI		MIX WATER
VOLUME	UOM	TYPE	WGT.	BUMP PLUG	TO REV.	SQ. PSI	RATED	Operator	RATED	Operator	
0.8	BBLs	Fresh Water	8.34	0	0	0	7350	5880	7260	5808	FRAC TANK

EXPLANATION: TROUBLE SETTING TOOL, RUNNING CSG, ETC. PRIOR TO CEMENTING: LOGGING WELL

PRESSURE/RATE DETAIL						EXPLANATION	
TIME HR:MIN.	PRESSURE - PSI		RATE BPM	Bbl. FLUID PUMPED	FLUID TYPE		
	PIPE	ANNULUS					
07:50						SAFETY MEETING: BJ CREW X CO. REP. X	
10:00						TEST LINES 4500 PSI	
11:00						CIRCULATING WELL - RIG X BJ X	
11:25	4500	0	0	0	H2O	ARRIVED TO LOCATION	
11:32	255	0	.9	2.5	H2O	SPOT EQUIPMENT RIG UP	
11:37	0	0	0		CMT	PRE JOB SAFETY MEETING	
11:42	150	0	.7	2.4	CMT	START PSI TEST	
11:44	68	0	.9	.8	H2O	START SPACER ESTABLISH CIRCULATION	
11:46						SHUT DOWN BATCH UP SLURRY TO 15.8PPG	
12:06	230	0	.9	3.25	H2O	START SLURRY TO SET PLUG FROM 1504 TO 1200 FT	
12:10	0	0	0			START DISPLACEMENT	
12:15	520	0	.8	.5	H2O	SHUT DOWN PLUG BALANCED OUT PULL UP 13 JOINTS OF TUBING WASH PUMPS AND LINES	
12:20	150	0	0			START REVERSING OUT GOT 0.5 BBL BACK OF CEMENT (LOST ABOUT .5 BBL DOWNHOLE DUE TO LOST CIRC	
						SHUT DOWN SHUT BACK SIDE START SQUEEZING	
						SQUEEZED .5 BBL BROUGHT PSI TO 520 SHUT DOWN MONITOR PSI	
						SHUT IT IT IN	

BUMPED PLUG	PSI TO BUMP PLUG	TEST FLOAT EQUIP.	BBL.CMT RETURNS/ REVERSED	TOTAL BBL. PUMPED	PSI LEFT ON CSG	SPOT TOP OUT CEMENT	SERVICE SUPERVISOR SIGNATURE:
Y N 0		Y N	.5	9.45	0	Y N	

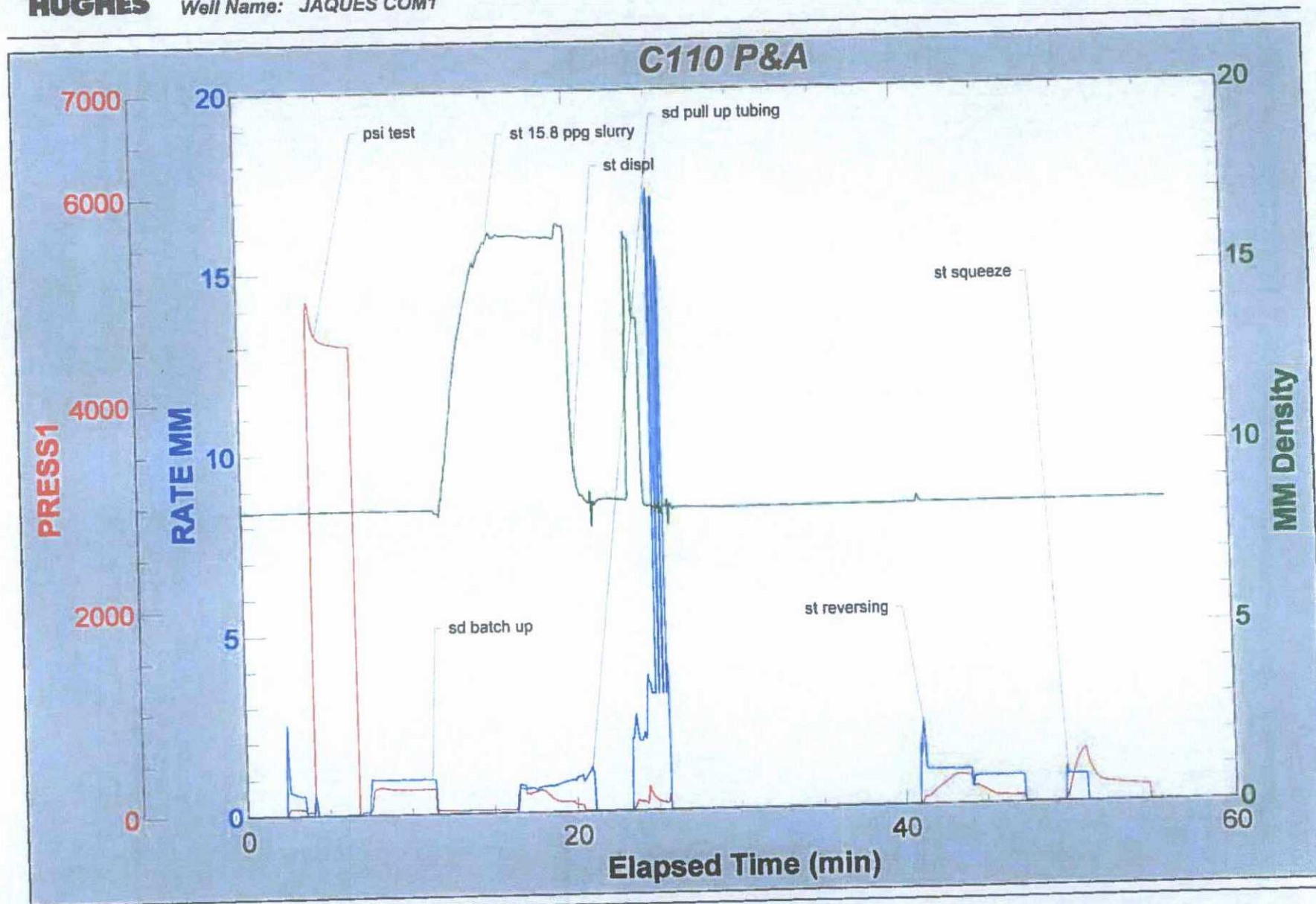


Baker Hughes JobMaster Program Version 4.02

Job Number: 10011177230

Customer: CHEVRON

Well Name: JAQUES COM1



CEMENT JOB REPORT



CUSTOMER CHEVRON CORPORATION		DATE 19-SEP-15		F.R. # 10011177322		SERV. SUPV. SIARHEI DZMITRYIEU	
LEASE & WELL NAME JAQUES COM #1 - API 30045215330000		LOCATION 20-27N-9W		COUNTY-PARISH-BLOCK San Juan New Mexico			
DISTRICT Farmington		DRILLING CONTRACTOR RIG # ALLIANCE 8		TYPE OF JOB Plug & Abandon			

SIZE & TYPE OF PLUGS	LIST-CSG-HARDWARE	MECHANICAL BARRIERS	MD	TVD	HANGER TYPES	MD	TVD
	NA-P&A						

PHYSICAL SLURRY PROPERTIES								
MATERIALS FURNISHED BY BJ	LAB REPORT NO.	SACKS OF CEMENT	SLURRY WGT PPG	SLURRY YLD FT	WATER GPS	PUMP TIME HR:MIN	Bbl SLURRY	Bbl MIX WATER
Fresh Water			8.34				2	
Class G Blend	4534	55	15.8	1.15	4.97		0	0
Fresh Water			8.34				8.5	
Fresh Water			8.34				4	
Class G Blend		289	15.8	1.15	4.97		31	17.90
Available Mix Water 200 Bbl.		Available Displ. Fluid 200 Bbl.		TOTAL			45.5	17.90

HOLE			TBG-CSG-D.P.					COLLAR DEPTHS				
SIZE	% EXCESS	DEPTH	ID	OD	WGT.	TYPE	MD	TVD	GRADE	SHOE	FLOAT	STAGE
6.75	0	3145	1.462	1.9	4.19	TBG	1213	1213	J-55			

LAST CASING				PKR-CMT RET-BR PL-LINER				PERF. DEPTH		TOP CONN		WELL FLUID	
ID	OD	WGT	TYPE	MD	TVD	BRAND & TYPE	DEPTH	TOP	BTM	SIZE	THREAD	TYPE	WGT.
2.4	2.875	6.5	CSG	1284	1284					2.375	EUE	FRESH WATER	8.34

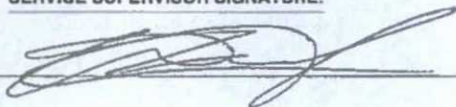
DISPL. VOLUME		DISPL. FLUID		CAL. PSI	CAL. MAX PSI	OP. MAX	MAX TBG PSI		MAX CSG PSI		MIX WATER
VOLUME	UOM	TYPE	WGT.	BUMP PLUG	TO REV.	SQ. PSI	RATED	Operator	RATED	Operator	FRAC TANK
1.1	BBLS	Fresh Water	8.34	0	0	0	7350	5880	7260	5808	

EXPLANATION: TROUBLE SETTING TOOL, RUNNING CSG, ETC. PRIOR TO CEMENTING: WAITING ON RETAINER

PRESSURE/RATE DETAIL					EXPLANATION	
TIME HR:MIN.	PRESSURE - PSI		RATE BPM	Bbl. FLUID PUMPED	FLUID TYPE	EXPLANATION
	PIPE	ANNULUS				
						SAFETY MEETING: BJ CREW <input checked="" type="checkbox"/> CO. REP. <input checked="" type="checkbox"/>
						TEST LINES 3500 PSI
						CIRCULATING WELL - RIG <input checked="" type="checkbox"/> BJ <input checked="" type="checkbox"/>
07:45						ARRIVED TO LOCATION
08:00						WAIT ON THE RETAINER LAST PLUG WAS TAGED AT 1284FT
14:00						PRE JOB SAFETY MEETING
14:15	3500	0	0	0	H2O	PSI TEST
14:20	0	500	0	0	H2O	PSI TEST BACK SIDE TO 500 PSI (UNSUCCESSFUL)
14:27	200	0	.5	4	H2O	SET RETAINER(STING IN) UNSUCCESSFUL
15:05						SHUT DOWN COME OUT OF THE HOLE TAKE STINGER OFF
16:06	730	0	.8	2	H2O	START INJECTION TEST
16:10	0	0	0		CMT	SHUT DOWN BATCH UP
16:14	680	0	.7	20	CMT	START 15.8 PPG SLURRY WITH 2% CACL IN FIRST 2 BBL
16:48	500	0	0			SD HESITATE FOR 15 MIN PSI BLED OFF TO 30
17:03	680	0	.8	10	CMT	START 15.8 PPG SLURRY
17:23	700	0	0			SHUT DOWN HESITATE FOR 20 MIN PSI BLED OFF TO 60
17:43	690	0	.6	1	CMT	START SLURRY CUT PRESSURE
17:48						SD LET CMT UTUBE PUL 1 JOINT OUT
17:58	300	0	.8	8.5	H2O	START REVERSING OUT GOT 6 BBL OF CEMENT BACK
18:12						SHUT DOWN COMPLETE THE JOB

CEMENT JOB REPORT



PRESSURE/RATE DETAIL						EXPLANATION		
TIME HR:MIN.	PRESSURE - PSI		RATE BPM	Bbl. FLUID PUMPED	FLUID TYPE	SAFETY MEETING: BJ CREW <input checked="" type="checkbox"/> CO. REP. <input checked="" type="checkbox"/>		
	PIPE	ANNULUS				TEST LINES 3500 PSI		
						CIRCULATING WELL - RIG <input checked="" type="checkbox"/> BJ <input checked="" type="checkbox"/>		
BUMPED PLUG	PSI TO BUMP PLUG	TEST FLOAT EQUIP.	BBL.CMT RETURNS/ REVERSED	TOTAL BBL PUMPED	PSI LEFT ON CSG	SPOT TOP OUT CEMENT	SERVICE SUPERVISOR SIGNATURE:	
Y <input checked="" type="checkbox"/> N	0	Y <input checked="" type="checkbox"/> N	6	45.5	0	Y <input checked="" type="checkbox"/> N		

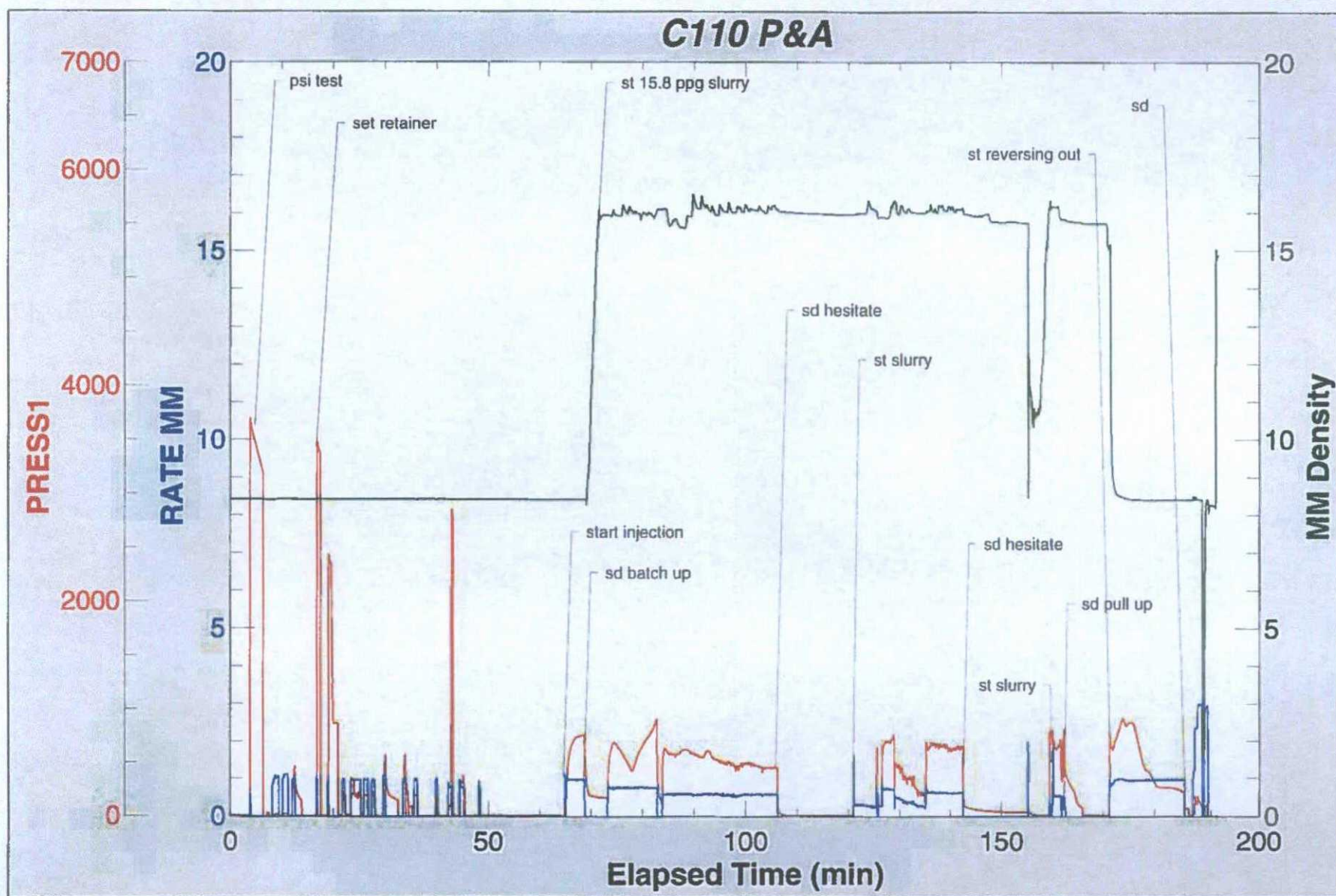


Baker Hughes JobMaster Program Version 4.02

Job Number: 10011177230

Customer: CHEVRON

Well Name: JAQUES COM1



CEMENT JOB REPORT



CUSTOMER CHEVRON CORPORATION		DATE 21-SEP-15	F.R. # 10011177440	SERV. SUPV. Brandon J Sisco	
LEASE & WELL NAME JAQUES COM #1 - API 30045215330000		LOCATION 20-27N-9W		COUNTY-PARISH-BLOCK San Juan New Mexico	
DISTRICT Farmington		DRILLING CONTRACTOR RIG # AESC 8		TYPE OF JOB Plug & Abandon	

SIZE & TYPE OF PLUGS	LIST-CSG-HARDWARE	MECHANICAL BARRIERS	MD	TVD	HANGER TYPES	MD	TVD
	NA-P&A						

MATERIALS FURNISHED BY BJ		LAB REPORT NO.	PHYSICAL SLURRY PROPERTIES						
			SACKS OF CEMENT	SLURRY WGT PPG	SLURRY YLD FT	WATER GPS	PUMP TIME HR:MIN	Bbl SLURRY	Bbl MIX WATER
Fresh Water				8.34				2	
Class G Blend			8	15.8	1.15	4.97		1.6	0.92
Fresh Water				8.34				0.5	
Fresh Water				8.34				0	
Class G Blend			5	15.8	1.15	4.97		1	0.58
Fresh Water				8.34				0.25	
Available Mix Water 100 Bbl.		Available Displ. Fluid 100 Bbl.	TOTAL				5.35	1.50	

HOLE			TBG-CSG-D.P.						COLLAR DEPTHS			
SIZE	% EXCESS	DEPTH	ID	OD	WGT.	TYPE	MD	TVD	GRADE	SHOE	FLOAT	STAGE
6.75		3225	2.441	2.875	6.5	CSG	186	186	J-55			

LAST CASING			PKR-CMT RET-BR PL-LINER			PERF. DEPTH		TOP CONN		WELL FLUID			
ID	OD	WGT.	TYPE	MD	TVD	BRAND & TYPE	DEPTH	TOP	BTM	SIZE	THREAD	TYPE	WGT.
										1.9	EUE	FRESH WATER	8.34

DISPL. VOLUME		DISPL. FLUID		CAL. PSI	CAL. MAX PSI	OP. MAX	MAX TBG PSI		MAX CSG PSI		MIX WATER
VOLUME	UOM	TYPE	WGT.	BUMP PLUG	TO REV.	SQ. PSI	RATED	Operator	RATED	Operator	
0.5	BBLS	Fresh Water	8.34	0	0	0	7260	5808	2950	2360	FRAC TANK
		Fresh Water	8.34								

EXPLANATION: TROUBLE SETTING TOOL, RUNNING CSG, ETC. PRIOR TO CEMENTING:

PRESSURE/RATE DETAIL						EXPLANATION	
TIME HR:MIN.	PRESSURE - PSI		RATE BPM	Bbl. FLUID PUMPED	FLUID TYPE		
	PIPE	ANNULUS					
07:00						SAFETY MEETING: BJ CREW <input checked="" type="checkbox"/> CO. REP. <input checked="" type="checkbox"/>	
09:30						TEST LINES 0 PSI	
09:47	64	0	1	2	H2O	CIRCULATING WELL - RIG <input type="checkbox"/> BJ <input checked="" type="checkbox"/>	
09:49						ARRIVED ON LOCATION(9-21-15)	
09:57	150	0	1	1.6	CMT	SAFETY MEETING	
09:59	69	0	1	.5	H2O	ST. 2 BBLS INJECTION RATE	
10:00						SHUT DOWN/BATCH UP CEMENT TO WEIGHT	
10:15	66	0	2	6	H2O	ST. 1.6 BBLS CEMENT@15.8#	
10:22						ST. .5 BBL WATER DISPLACEMENT	
10:26	104	0	1	1	CMT	SHUT DOWN/STING OUT	
10:27	80	0	1	25	H2O	ST.6 BBLS WATER REVERSE CEMENT OUT/1 BBL CEMENT RETURN	
10:28						SHUT DOWN/BATCH UP CEMENT TO WEIGHT	
10:38	130	0	1	4	H2O	ST. 1 BBL CEMENT@15.8#	
						ST. 1/4 BBL WATER DISPLACEMENT	
						SHUT DOWN/STING OUT	
						ST. 4 BBLS WATER REVERSE CEMENT OUT/5 BBL CEMENT RETURN	

BUMPED PLUG	PSI TO BUMP PLUG	TEST FLOAT EQUIP.	BBL CMT RETURNS/ REVERSED	TOTAL BBL PUMPED	PSI LEFT ON CSG	SPOT TOP OUT CEMENT	SERVICE SUPERVISOR SIGNATURE:
Y <input type="checkbox"/> N <input checked="" type="checkbox"/> 0		Y <input type="checkbox"/> N <input checked="" type="checkbox"/> 1		5.35	0	Y <input type="checkbox"/> N <input checked="" type="checkbox"/>	



Baker Hughes JobMaster Program Version 4.02

Job Number: 10011177440

Customer: CHEVRON

Well Name: JAKUES #1

