

S. Chaco UT #342H

Lybrook Gallup

(page 1)

Spud: 4/17/15

Completed: 8/2015

SHL: 1327' FNL & 200' FEL
NE/4 NE/4 Section 2(A), T22N, R7W

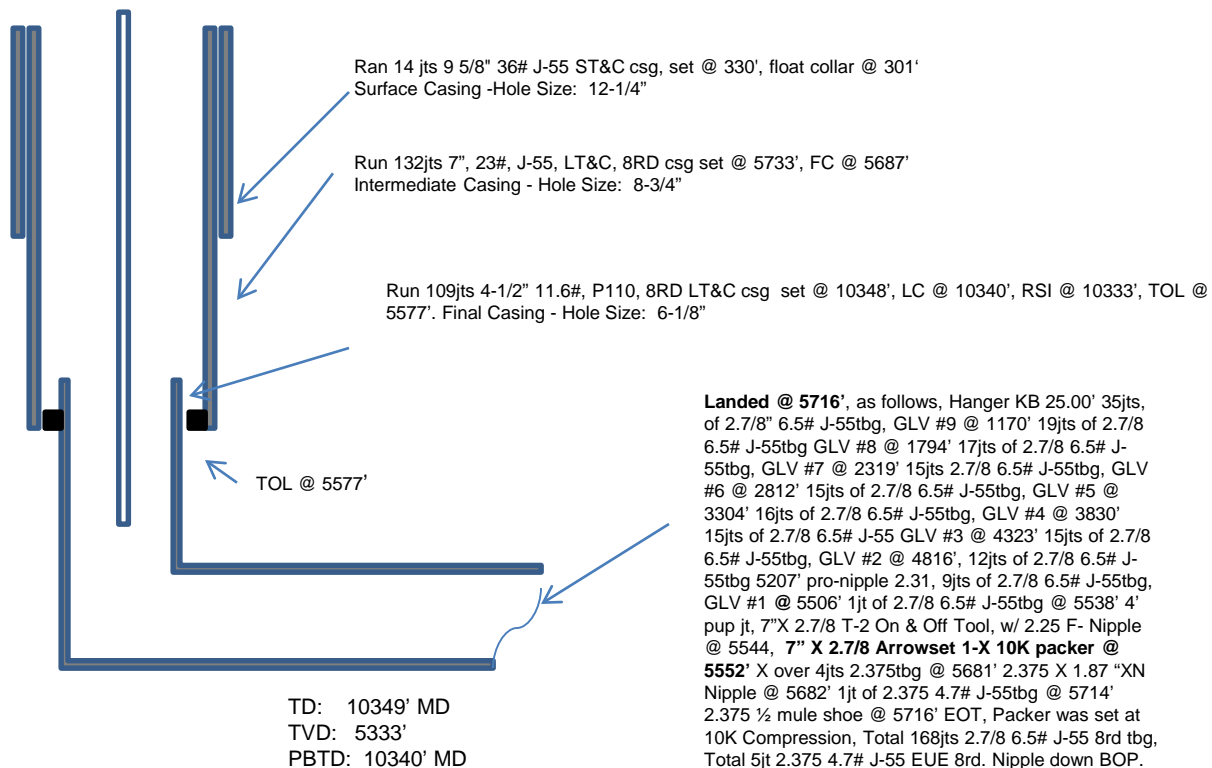
BHL: 2322' FNL & 341' FEL
NE/4 NE/4 Section 1 (H), T22N, R7W

Sandoval, NM

Elevation: 7034'

API: 30-043-21243

<i>Tops</i>	<i>MD</i>	<i>TVD</i>
Ojo Alamo	1200	1197
Kirtland	1475	1470
Picture Cliffs	1780	1774
Lewis	1879	1873
Chacra	2202	2194
Cliff House	3346	3335
Menefee	3396	3386
Point Lookout	4038	4027
Mancos	4200	4189
Gallup	4580	4569



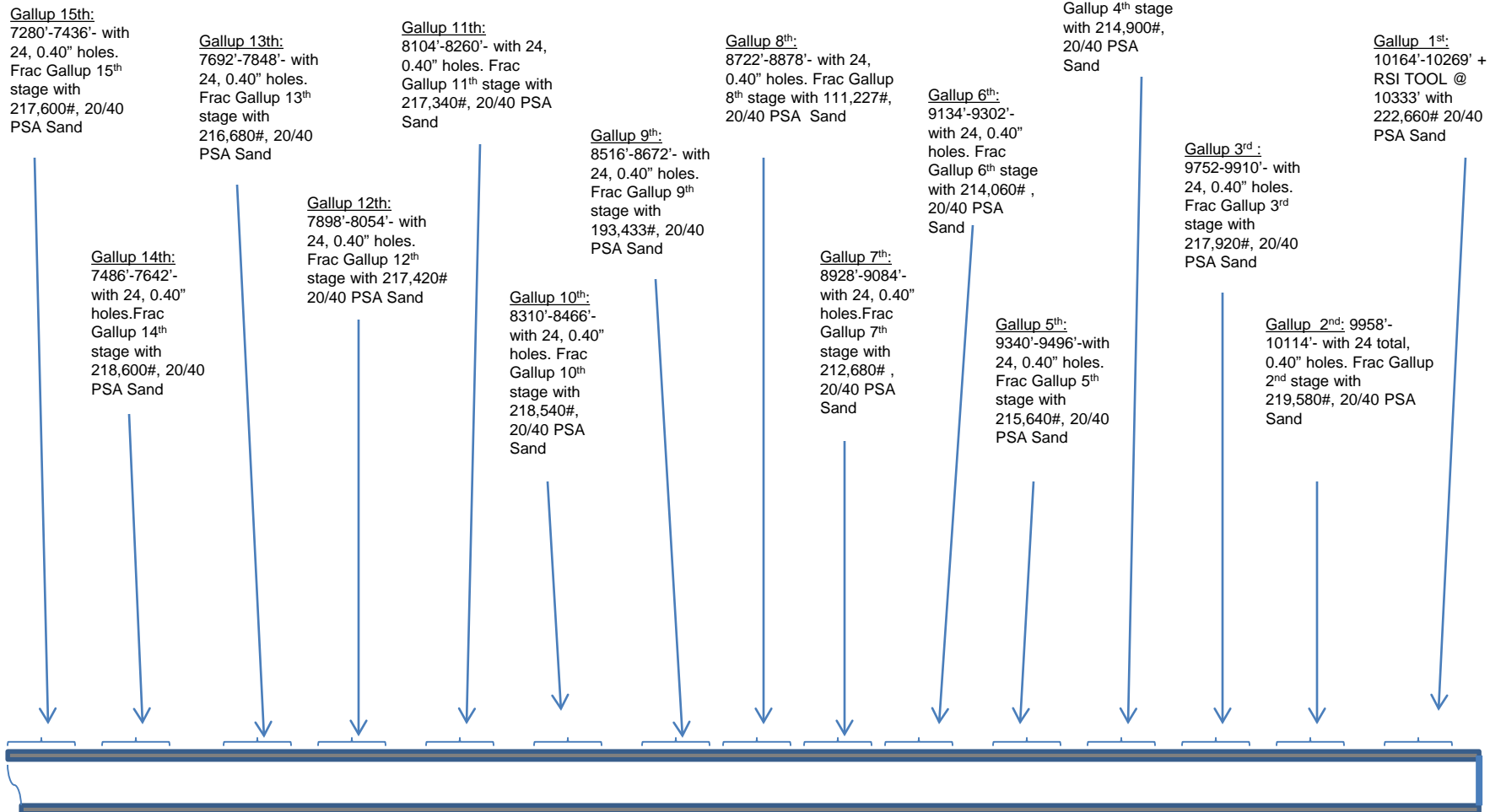
Landed @ 5716', as follows, Hanger KB 25.00' 35jts, of 2.7/8" 6.5# J-55tbg, GLV #9 @ 1170' 19jts of 2.7/8 6.5# J-55tbg, GLV #8 @ 1794' 17jts of 2.7/8 6.5# J-55tbg, GLV #7 @ 2319' 15jts 2.7/8 6.5# J-55tbg, GLV #6 @ 2812' 15jts of 2.7/8 6.5# J-55tbg, GLV #5 @ 3304' 16jts of 2.7/8 6.5# J-55tbg, GLV #4 @ 3830' 15jts of 2.7/8 6.5# J-55 GLV #3 @ 4323' 15jts of 2.7/8 6.5# J-55tbg, GLV #2 @ 4816', 12jts of 2.7/8 6.5# J-55tbg 5207' pro-nipple 2.31, 9jts of 2.7/8 6.5# J-55tbg, GLV #1 @ 5506' 1jt of 2.7/8 6.5# J-55tbg @ 5538' 4' pup jt, 7"X 2.7/8 T-2 On & Off Tool, w/ 2.25 F- Nipple @ 5544, **7" X 2.7/8 Arrowset 1-X 10K packer @ 5552'** X over 4jts 2.375tbg @ 5681' 2.375 X 1.87 "XN Nipple @ 5682' 1jt of 2.375 4.7# J-55tbg @ 5714' 2.375 ½ mule shoe @ 5716' EOT, Packer was set at 10K Compression, Total 168jts 2.7/8 6.5# J-55 8rd tbg, Total 5jt 2.375 4.7# J-55 EUE 8rd. Nipple down BOP. Set packer in tension. Landed tbg EOT @ 5716'. NU wellhead, RD.

HOLE SIZE	CASING	CEMENT	VOLUME	CMT TOP
12-1/4"	9-5/8"	101sx	162cu.ft.	Surface
8-3/4"	7"	1107 sx	1590cu. ft.	Surface
6-1/8"	4-1/2"	470sx	640cu. ft.	TOL 5577'

S. Chaco UT 342H

Lybrook Gallup

(page 2 – lateral with completion)

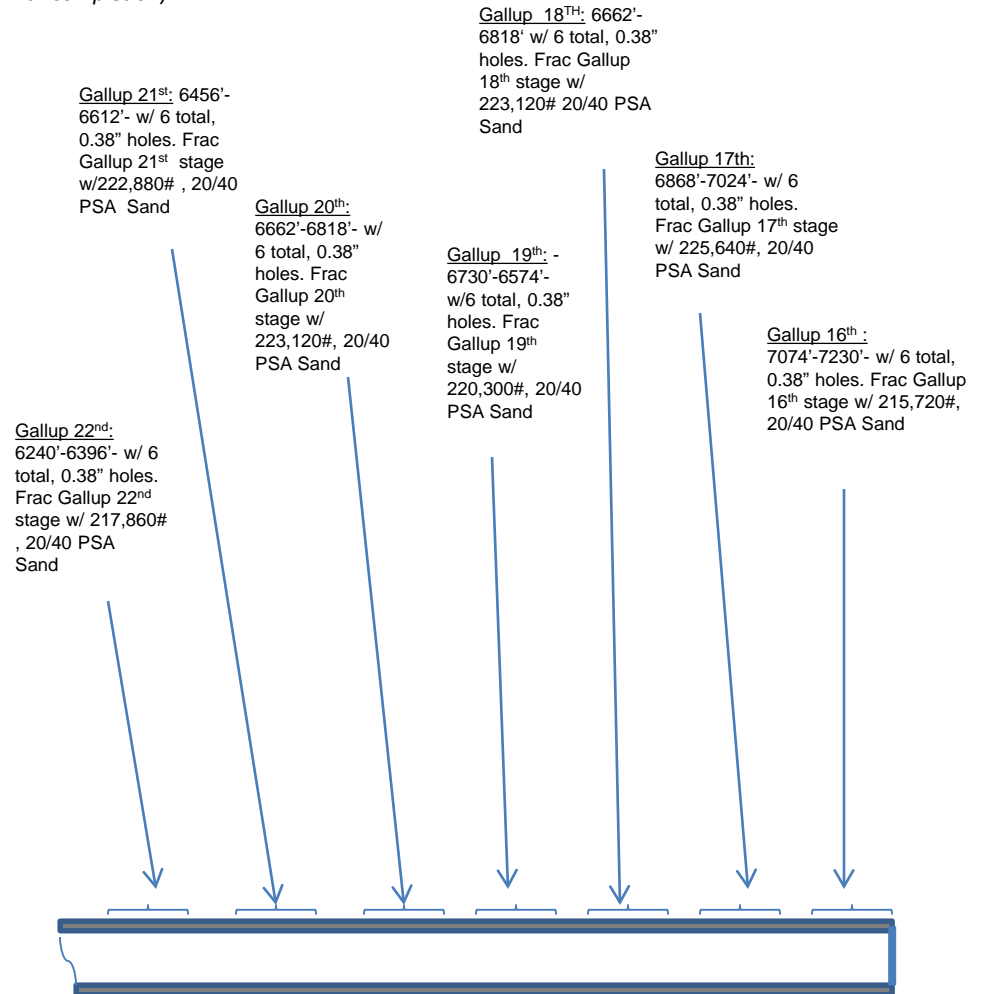


See page 1 for upper portion of hole

S. Chaco UT 342H

Lybrook Gallup

(page 2 – lateral with completion)



See page 1 for upper portion of hole