

UNITED STATES  
DEPARTMENT OF THE INTERIOR  
BUREAU OF LAND MANAGEMENT

FORM APPROVED  
OMB NO. 1004-0135  
Expires: July 31, 2010

**SUNDRY NOTICES AND REPORTS ON WELLS**  
*Do not use this form for proposals to drill or to re-enter an abandoned well. Use form 3160-3 (APD) for such proposals.*

**SUBMIT IN TRIPLICATE - Other instructions on reverse side.**

1. Type of Well <input type="checkbox"/> Oil Well <input checked="" type="checkbox"/> Gas Well <input type="checkbox"/> Other		5. Lease Serial No. NMSF078904
2. Name of Operator BP AMERICA PRODUCTION CO		6. If Indian, Allottee or Tribe Name EASTERN NAVAJO
Contact: TOYA COLVIN E-Mail: Toya.Colvin@bp.com		7. If Unit or CA/Agreement, Name and/or No. 892000844F
3a. Address 200 ENERGY COURT FARMINGTON, NM 87401	3b. Phone No. (include area code) Ph: 281-366-7148	8. Well Name and No. GALLEGOS CANYON UNIT 230E
4. Location of Well (Footage, Sec., T., R., M., or Survey Description) Sec 23 T28N R12W SWSE 1070FSL 1630FEL 36.643310 N Lat, 108.077120 W Lon		9. API Well No. 30-045-26010-00-C1
		10. Field and Pool, or Exploratory SIMPSON
		11. County or Parish, and State SAN JUAN COUNTY, NM

12. CHECK APPROPRIATE BOX(ES) TO INDICATE NATURE OF NOTICE, REPORT, OR OTHER DATA

TYPE OF SUBMISSION	TYPE OF ACTION			
<input type="checkbox"/> Notice of Intent	<input type="checkbox"/> Acidize	<input type="checkbox"/> Deepen	<input type="checkbox"/> Production (Start/Resume)	<input type="checkbox"/> Water Shut-Off
<input checked="" type="checkbox"/> Subsequent Report	<input type="checkbox"/> Alter Casing	<input type="checkbox"/> Fracture Treat	<input type="checkbox"/> Reclamation	<input type="checkbox"/> Well Integrity
<input type="checkbox"/> Final Abandonment Notice	<input type="checkbox"/> Casing Repair	<input type="checkbox"/> New Construction	<input type="checkbox"/> Recomplete	<input checked="" type="checkbox"/> Other
	<input type="checkbox"/> Change Plans	<input type="checkbox"/> Plug and Abandon	<input type="checkbox"/> Temporarily Abandon	
	<input type="checkbox"/> Convert to Injection	<input type="checkbox"/> Plug Back	<input type="checkbox"/> Water Disposal	

13. Describe Proposed or Completed Operation (clearly state all pertinent details, including estimated starting date of any proposed work and approximate duration thereof. If the proposal is to deepen directionally or recompleat horizontally, give subsurface locations and measured and true vertical depths of all pertinent markers and zones. Attach the Bond under which the work will be performed or provide the Bond No. on file with BLM/BIA. Required subsequent reports shall be filed within 30 days following completion of the involved operations. If the operation results in a multiple completion or recompleat in a new interval, a Form 3160-4 shall be filed once testing has been completed. Final Abandonment Notices shall be filed only after all requirements, including reclamation, have been completed, and the operator has determined that the site is ready for final inspection.)

BP America Production Company would like to change our production allocation to a fixed percentage for the subject well due to an established production rate. Our fixed rate will be as follows:

Basin Dakota= Gas 48%, Oil 7%, Water 50%, and Simpson Gallup= Gas 52%, Oil 93%, Water 50%. Please see the attached documentation supporting our allocation.

CA 892000844F

DHC 3890 AZ

14. I hereby certify that the foregoing is true and correct. <b>Electronic Submission #314133 verified by the BLM Well Information System For BP AMERICA PRODUCTION CO, sent to the Farmington Committed to AFMSS for processing by WILLIAM TAMBEKOU on 09/17/2015 (15WMT0169SE)</b>	
Name (Printed/Typed) TOYA COLVIN	Title REGULATORY ANALYST
Signature (Electronic Submission)	Date 08/26/2015

**THIS SPACE FOR FEDERAL OR STATE OFFICE USE**

Approved By <b>ACCEPTED</b>	WILLIAM TAMBEKOU Title PETROLEUM ENGINEER	Date 09/17/2015
Conditions of approval, if any, are attached. Approval of this notice does not warrant or certify that the applicant holds legal or equitable title to those rights in the subject lease which would entitle the applicant to conduct operations thereon.		Office Farmington

Title 18 U.S.C. Section 1001 and Title 43 U.S.C. Section 1212, make it a crime for any person knowingly and willfully to make to any department or agency of the United States any false, fictitious or fraudulent statements or representations as to any matter within its jurisdiction.

**\*\* BLM REVISED \*\* BLM REVISED \*\* BLM REVISED \*\* BLM REVISED \*\* BLM REVISED \*\***

**NMOCD**

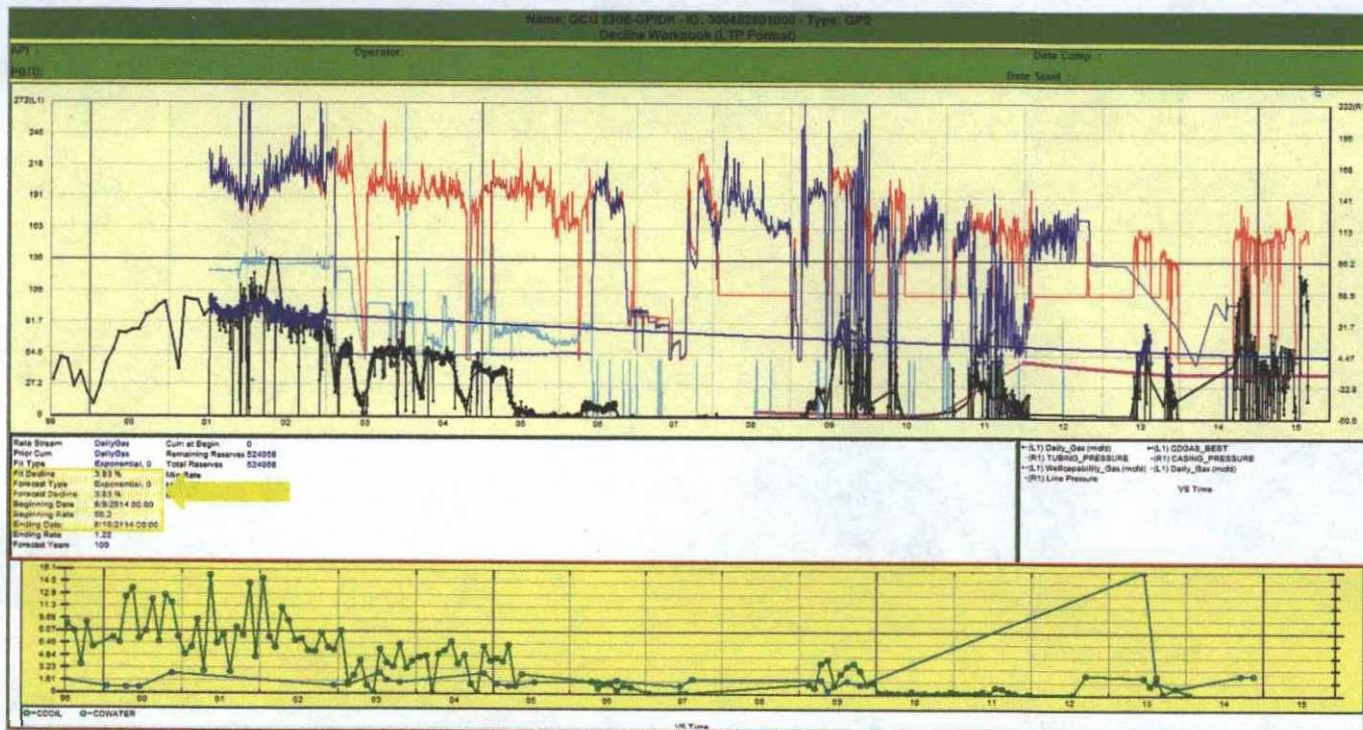
RY

6

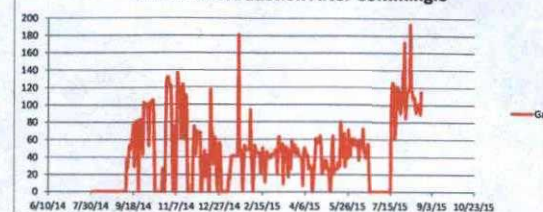


	Prior to Commingle			Commingle Forecast			Proposed Allocation		
	Qg	Qo	Qw	Qg	Qo	Qw	Gas	Oil	Water
Dakota	0	0	0	51	0.306	1	48%	7%	50%
Simpson	56	4	1	56	4	1	52%	93%	50%

GCU 230E was downhole commingled in September 2014. Prior to the commingle work the well had dual strings. It is unclear when the Dakota was producing. The Operations team indicated that it was at least before 2003. Therefore, I believe all production shown before August 2014 in the forecast below was from the Gallup formation. The estimated production from the Gallup formation at the time of the commingle was 56 mcf/d, 4 bopd, and 1 bwpd. The gas rate after the commingle when the pump was operational was 115 mcf/d (seen in excel plot to the right). Therefore, the Dakota added approximately 51 mcf/d. Using a local average condensate yield of 5 bb/mmcf, I estimate Dakota oil production to be .306 bopd. Proposed gas, oil, and water allocations are highlighted above in yellow.



GCU 230E Production After Commingle



Date	Gas	Line	Casing
8/21/15	115	113	50
8/20/15	89	113	63
8/19/15	95	114	45
8/18/15	99	114	36
8/17/15	101	113	27
8/16/15	101	113	16
8/15/15	91	113	14
8/14/15	97	114	29
8/13/15	109	113	38
8/12/15	109	114	33
8/11/15	107	112	38
8/10/15	116	108	54
8/9/15	116	107	45
8/8/15	198	107	44
8/7/15	117	109	47
8/6/15	117	109	47
8/5/15	115	112	55
8/4/15	115	110	44
8/3/15	94	108	48
8/2/15	85	108	49
8/1/15	172	107	55
7/31/15	137	107	39
7/30/15	137	107	39
7/29/15	101	106	43
7/28/15	101	106	43
7/27/15	90	106	59
7/26/15	116	104	61
7/25/15	95	104	63
7/24/15	117	105	64
7/23/15	119	105	76
7/22/15	121	103	65
7/21/15	70	106	86
7/20/15	61	105	66
7/19/15	121	105	65
7/18/15	125	106	72
7/17/15	125	107	82
7/16/15	101	108	85
7/15/15	0	0	66
7/14/15	0	0	34
7/13/15	0	0	27
7/12/15	0	0	28
7/11/15	0	0	25
7/10/15	0	0	15
7/9/15	0	0	13
7/8/15	0	0	11
7/7/15	0	0	5
7/6/15	0	0	-1
7/5/15	0	0	-1
7/4/15	0	0	-1
7/3/15	0	0	-2
7/2/15	0	0	5
7/1/15	0	0	15
6/30/15	0	0	2
6/29/15	0	0	5
6/28/15	0	0	13
6/27/15	0	0	29
6/26/15	0	0	10
6/25/15	0	0	-1
6/24/15	0	0	15
6/23/15	0	0	16
6/22/15	0	0	4
6/21/15	0	0	13
6/20/15	0	0	7
6/19/15	21	115	32
6/18/15	55	116	53
6/17/15	50	115	55
6/16/15	47	117	79



6/15/15	39	112	59
6/14/15	46	110	41
6/13/15	45	114	39
6/12/15	72	113	40
6/11/15	51	112	70
6/10/15	51	112	70
6/9/15	58	113	50
6/8/15	49	115	51
6/7/15	36	115	53
6/6/15	57	116	58
6/5/15	58	118	64
6/4/15	53	122	59
6/3/15	59	125	58
6/2/15	53	119	45
6/1/15	61	117	42
5/31/15	56	120	44
5/30/15	53	122	70
5/29/15	61	120	74
5/28/15	42	139	65
5/27/15	40	120	43
5/26/15	71	115	51
5/25/15	38	120	62
5/24/15	38	120	62
5/23/15	51	116	53
5/22/15	29	119	65
5/21/15	67	119	63
5/20/15	48	148	84
5/19/15	40	117	65
5/18/15	49	116	57
5/17/15	80	117	61
5/16/15	29	117	64
5/15/15	29	117	64
5/14/15	33	119	88
5/13/15	26	116	75
5/12/15	26	116	76
5/11/15	26	115	67
5/10/15	24	114	63
5/9/15	22	115	69
5/8/15	64	115	70
5/7/15	53	114	50
5/6/15	17	116	81
5/5/15	0	105	64
5/4/15	16	105	64
5/3/15	26	105	49
5/2/15	26	106	46
5/1/15	32	105	72
4/30/15	36	106	79
4/29/15	27	105	84
4/28/15	27	105	79
4/27/15	36	103	75
4/26/15	22	103	76
4/25/15	22	103	76
4/24/15	52	105	71
4/23/15	64	104	58
4/22/15	60	105	68
4/21/15	57	105	54
4/20/15	56	105	61
4/19/15	55	106	49
4/18/15	61	106	52
4/17/15	42	112	60
4/16/15	28	113	55
4/15/15	15	109	76
4/14/15	0	0	98
4/13/15	28	114	86
4/12/15	28	113	89
4/11/15	30	113	69
4/10/15	26	116	50
4/9/15	36	110	5
4/8/15	42	114	34
4/7/15	42	114	34
4/6/15	46	112	31
4/5/15	50	112	18
4/4/15	42	113	62
4/3/15	7	111	57
4/2/15	38	114	11
4/1/15	39	113	11
3/31/15	40	113	16
3/30/15	41	113	15
3/29/15	43	113	18
3/28/15	49	113	17
3/27/15	46	115	23
3/26/15	43	109	20
3/25/15	53	116	11
3/24/15	45	114	34

3/23/15	52	109	19
3/22/15	55	109	21
3/21/15	58	108	46
3/20/15	26	108	58
3/19/15	47	108	36
3/18/15	48	109	77
3/17/15	17	108	84
3/16/15	31	100	63
3/15/15	51	108	32
3/14/15	51	108	34
3/13/15	48	110	40
3/12/15	52	108	79
3/11/15	9	104	74
3/10/15	55	105	31
3/9/15	47	106	51
3/8/15	53	104	26
3/7/15	46	101	39
3/6/15	63	105	28
3/5/15	56	108	31
3/4/15	20	105	22
3/3/15	48	106	51
3/2/15	48	106	51
3/1/15	43	105	16
2/28/15	43	105	16
2/27/15	43	105	16
2/26/15	43	105	16
2/25/15	43	107	59
2/24/15	39	105	18
2/23/15	39	105	18
2/22/15	39	105	18
2/21/15	39	105	18
2/20/15	46	107	18
2/19/15	27	108	44
2/18/15	11	106	43
2/17/15	37	105	0
2/16/15	41	106	16
2/15/15	50	105	24
2/14/15	31	107	48
2/13/15	22	105	40
2/12/15	43	105	9
2/11/15	44	105	2
2/10/15	45	104	1
2/9/15	44	104	0
2/8/15	46	103	1
2/7/15	48	104	1
2/6/15	53	104	2
2/5/15	30	105	38
2/4/15	0	0	68
2/3/15	26	106	24
2/2/15	43	103	2
2/1/15	94	103	14
1/31/15	48	104	4
1/30/15	48	104	4
1/29/15	48	104	4
1/28/15	48	104	4
1/27/15	49	103	4
1/26/15	51	105	2
1/25/15	53	102	2
1/24/15	28	101	37
1/23/15	0	0	68
1/22/15	24	103	41
1/21/15	48	103	2
1/20/15	48	103	2
1/19/15	46	101	4
1/18/15	181	104	20
1/17/15	41	108	84
1/16/15	41	108	84
1/15/15	41	108	84
1/14/15	41	108	84
1/13/15	41	108	84
1/12/15	41	108	84
1/11/15	41	108	84
1/10/15	41	108	84
1/9/15	31	108	89
1/8/15	15	108	71
1/7/15	18	107	8
1/6/15	0	25	7
1/5/15	0	0	6
1/4/15	0	0	6
1/3/15	0	0	20
1/2/15	0	25	54
1/1/15	0	0	56
12/31/14	0	0	52
12/30/14	0	0	41



12/29/14	23	90	22
12/28/14	53	98	11
12/27/14	56	101	5
12/26/14	40	105	75
12/25/14	0	0	109
12/24/14	20	101	76
12/23/14	55	107	22
12/22/14	62	108	6
12/21/14	42	107	33
12/20/14	32	107	39
12/19/14	66	106	4
12/18/14	71	105	29
12/17/14	117	106	25
12/16/14	0	0	0
12/15/14	0	0	0
12/14/14	42	107	40
12/13/14	42	107	40
12/12/14	42	107	40
12/11/14	17	106	55
12/10/14	47	109	26
12/9/14	26	105	44
12/8/14	40	106	7
12/7/14	0	0	0
12/6/14	0	0	0
12/5/14	68	109	2
12/4/14	68	109	2
12/3/14	68	109	2
12/2/14	66	108	2
12/1/14	70	107	2
11/30/14	43	109	38
11/29/14	51	108	23
11/28/14	75	106	3
11/27/14	46	109	38
11/26/14	0	0	81
11/25/14	0	0	76
11/24/14	0	29	35
11/23/14	0	0	-3
11/22/14	0	0	-4
11/21/14	0	20	24
11/20/14	44	107	38
11/19/14	107	108	16
11/18/14	111	107	26
11/17/14	60	108	52
11/16/14	102	106	10
11/15/14	123	110	11
11/14/14	76	111	56
11/13/14	62	122	28
11/12/14	114	118	10
11/11/14	117	111	10
11/10/14	123	110	11
11/9/14	136	112	23
11/8/14	78	112	67
11/7/14	0	0	82
11/6/14	44	109	54
11/5/14	75	110	46
11/4/14	0	40	82
11/3/14	33	111	51
11/2/14	84	115	41
11/1/14	120	113	14
10/31/14	123	121	20
10/30/14	123	121	20
10/29/14	131	121	40
10/28/14	131	121	40
10/27/14	124	123	55
10/26/14	75	128	126
10/25/14	0	0	118
10/24/14	0	0	136
10/23/14	0	0	109
10/22/14	27	118	90
10/21/14	0	0	98
10/20/14	0	0	92
10/19/14	0	0	91
10/18/14	0	0	103
10/17/14	0	0	97
10/16/14	0	0	99
10/15/14	0	0	90
10/14/14	0	0	96
10/13/14	0	137	116
10/12/14	53	108	87
10/11/14	105	111	64
10/10/14	106	111	51
10/9/14	104	111	85
10/8/14	100	111	90
10/7/14	103	115	102

10/6/14	53	111	127
10/5/14	87	110	82
10/4/14	101	109	83
10/3/14	101	109	74
10/2/14	100	112	71
10/1/14	101	109	74
9/30/14	103	109	64
9/29/14	43	110	103
9/28/14	52	108	64
9/27/14	83	109	19
9/26/14	83	109	19
9/25/14	83	109	19
9/24/14	0	0	50
9/23/14	66	116	47
9/22/14	62	116	48
9/21/14	81	115	54
9/20/14	66	116	118
9/19/14	29	115	92
9/18/14	77	116	50
9/17/14	67	115	22
9/16/14	59	114	26
9/15/14	53	110	41
9/14/14	48	106	33
9/13/14	53	106	31
9/12/14	35	108	59
9/11/14	27	107	51
9/10/14	37	104	59
9/9/14	2	99	72
9/8/14	0	0	54
9/7/14	0	0	48
9/6/14	0	0	37
9/5/14	0	0	47
9/4/14	0	0	47
9/3/14	0	0	39
9/2/14	0	0	37
9/1/14	0	0	37
8/31/14	0	0	29
8/30/14	0	0	33
8/29/14	0	0	36
8/28/14	0	0	40
8/27/14	0	0	37
8/26/14	0	0	47
8/25/14	0	0	46
8/24/14	0	0	54
8/23/14	0	0	42
8/22/14	0	0	38
8/21/14	0	0	31
8/20/14	0	0	13
8/19/14	0	0	50
8/18/14	0	0	13
8/17/14	0	0	47
8/16/14	0	0	47
8/15/14	0	0	47
8/14/14	0	0	0
8/13/14	0	0	0
8/12/14	0	0	50
8/11/14	0	0	50
8/10/14	0	0	50
8/9/14	0	0	46
8/8/14	0	0	46
8/7/14	0	0	57
8/6/14	0	0	37
8/5/14	0	0	23
8/4/14	0	0	33
8/3/14	0	0	46
8/2/14	0	0	36
8/1/14	0	0	26