

MC 5 COM #906H BASIN MC (oil)

(page 1)

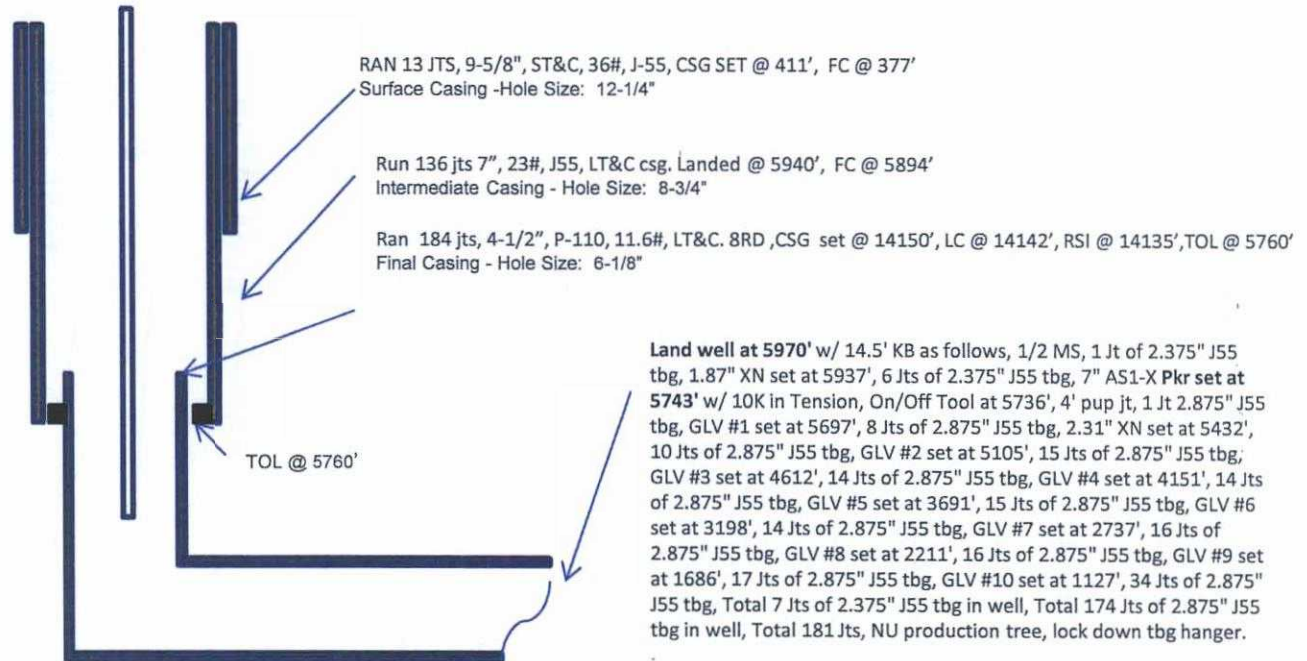
Spud: 12/11/14

Completed: 10/26/15

SHL: 1262' FNL & 422' FWL
NW/4 NW/4 Section 33(D), T24N, R8W

BHL: 357' FSL & 2320' FWL
SE/4 SW/4 Section 34 (N), T24N, R8W

SAN JUAN NM
Elevation: 7020'
API: 30-045-35606



TD: 14155' MD
TVD: 5346'
PBSD: 14142' MD

Tops	MD	TVD
OJO ALAMO	1345	1324
KIRTLAND	1560	1525
PICTURE CLIFFS	1941	1886
LEWIS	2082	2020
CHACRA	2369	2293
CLIFF HOUSE	3483	3360
MENEFEE	3534	3408
PT LOOKOUT	4446	4277
MANCOS	4673	4495
GALLUP	5052	4860

HOLE SIZE	CASING	CEMENT	VOLUME	CMT TOP
12-1/4"	9-5/8"	245 sx	222 cu.ft.	Surface
8-3/4"	7"	1147 sx	1648 cu.ft.	Surface
6-1/8"	4-1/2"	830 sx	1128 cu. ft.	TOL 5760'

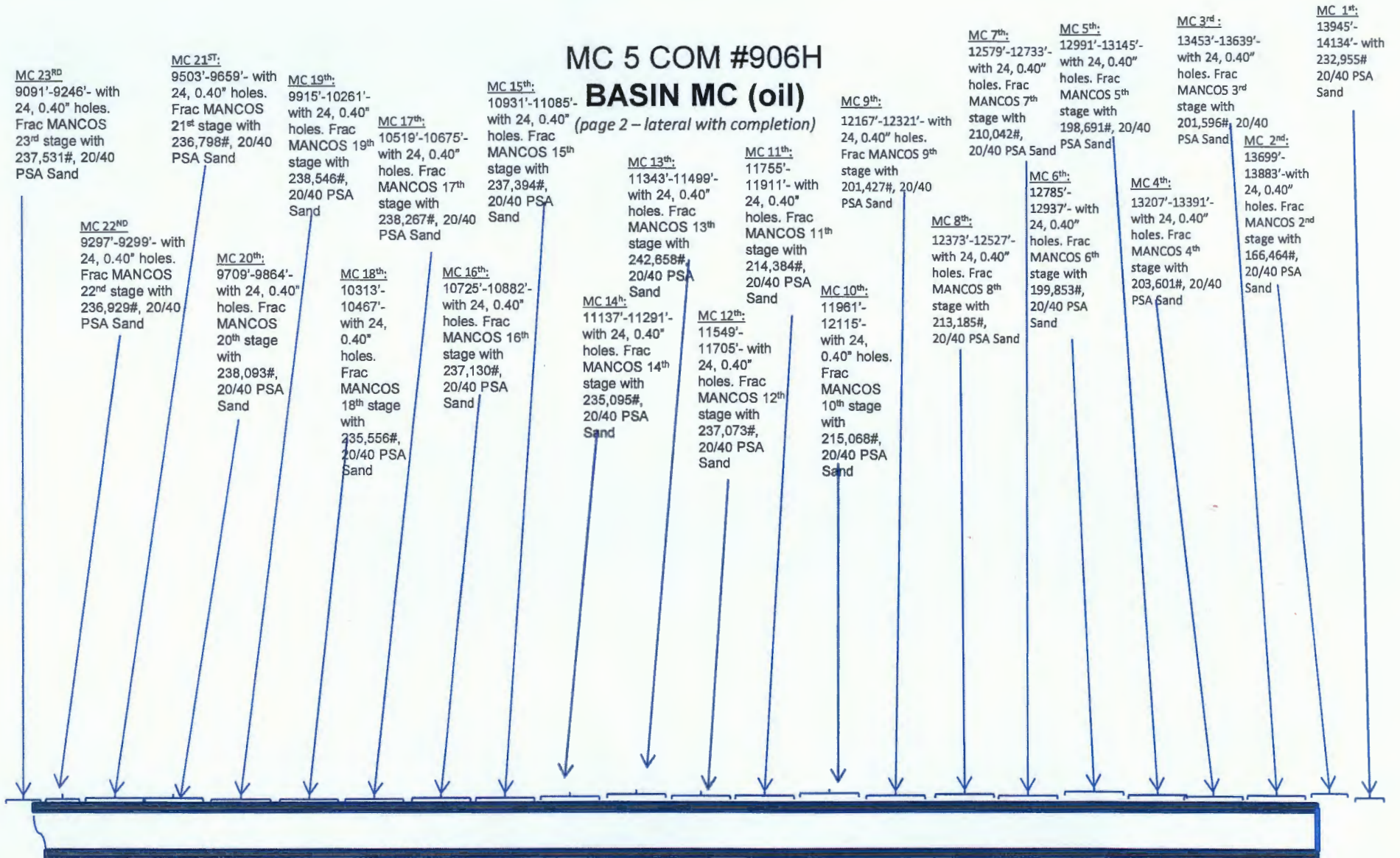
CONFIDENTIAL

Lg 10/29/15

RV

MC 5 COM #906H BASIN MC (oil)

(page 2 – lateral with completion)



See page 1 for upper portion of hole

MC 38th:
6001'-6157'-
with 24, 0.40"
holes. Frac
MANCOS
38th tage with
187,175#,
20/40 PSA
Sand

MC 36th:
6413'-6568'-
with 24, 0.40"
holes. Frac
MANCOS 36th
tage with
237,463#,
20/40 PSA
Sand

MC 34th:
6825'-6981'-
with 24, 0.40"
holes. Frac
MANCOS 34th
stage with
239,646#,
20/40 PSA
Sand

MC 32nd:
7237'-7392'- with
24, 0.40" holes.
Frac MANCOS 32nd
stage with
237,013#, 20/40
PSA Sand

MC 30th:
7649'-7805'-
with 24, 0.40"
holes. Frac
MANCOS 30th
stage with
236,846#,
20/40 PSA Sand

MC 28th:
8061'-8216'- with
24, 0.40" holes.
Frac MANCOS
28th stage with
224,072#, 20/40
PSA Sand

MC 27th:
8267'-8422'- with
24, 0.40" holes.
Frac MANCOS
27th stage with
232,884#, 20/40
PSA Sand

MC 25th:
8679'-8835'-
with 24, 0.40"
holes. Frac
MANCOS 25th
stage with
246,790#,
20/40 PSA
Sand

MC 24th:
8885'-9042'-
with 24,
0.40" holes.
Frac
MANCOS
24th stage
with
237,737#,
20/40 PSA
Sand

MC 5 COM #906H BASIN MC (oil)

(page 2 – lateral with completion)

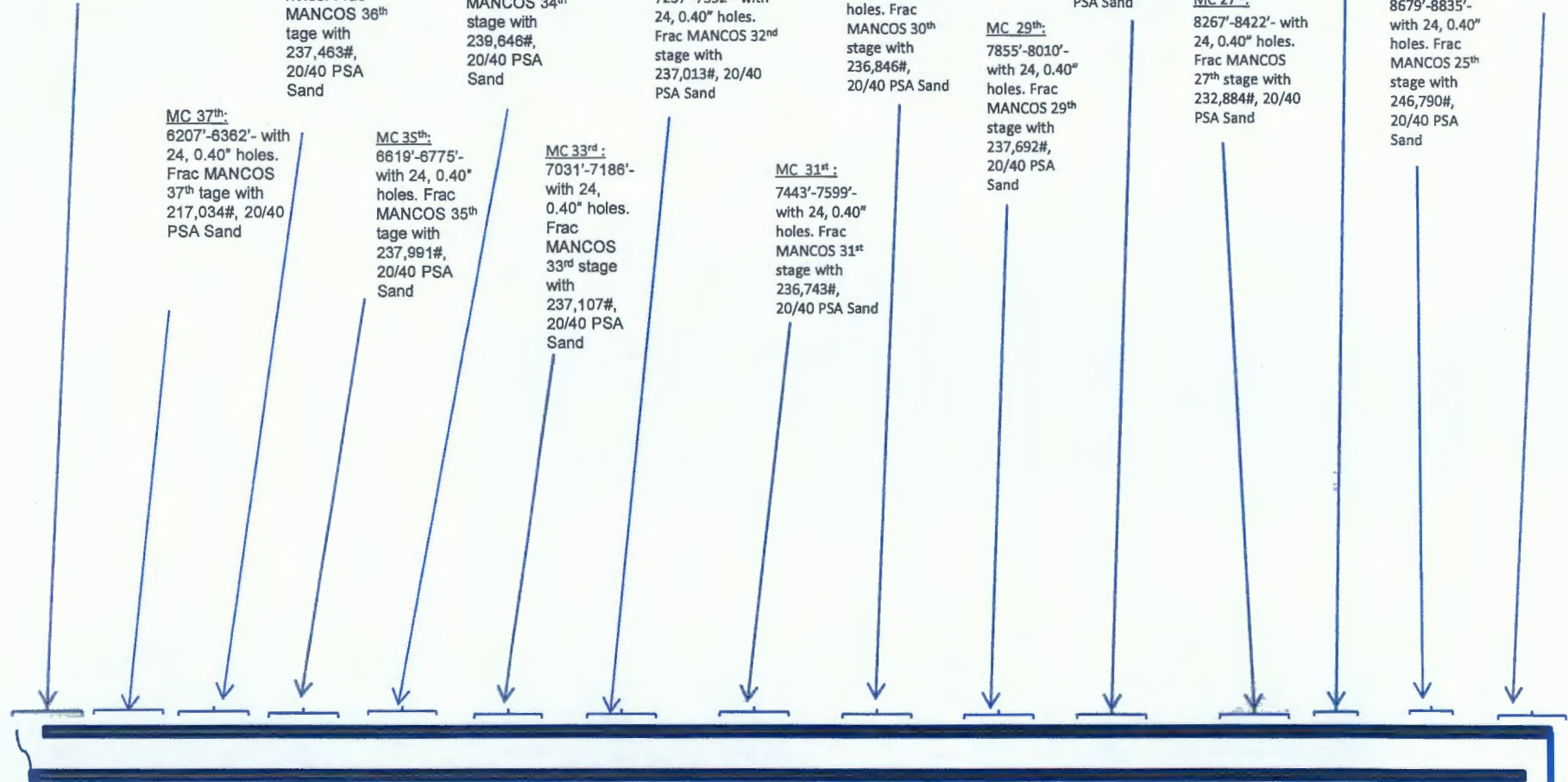
MC 37th:
6207'-6362'- with
24, 0.40" holes.
Frac MANCOS
37th tage with
217,034#, 20/40
PSA Sand

MC 35th:
6619'-6775'-
with 24, 0.40"
holes. Frac
MANCOS 35th
tage with
237,991#,
20/40 PSA
Sand

MC 33rd:
7031'-7186'-
with 24,
0.40" holes.
Frac
MANCOS
33rd stage
with
237,107#,
20/40 PSA
Sand

MC 31st:
7443'-7599'-
with 24, 0.40"
holes. Frac
MANCOS 31st
stage with
236,743#,
20/40 PSA Sand

MC 29th:
7855'-8010'-
with 24, 0.40"
holes. Frac
MANCOS 29th
stage with
237,692#,
20/40 PSA
Sand



See page 1 for upper portion of hole