

UNITED STATES  
DEPARTMENT OF THE INTERIOR  
BUREAU OF LAND MANAGEMENT

FORM APPROVED  
OMB NO. 1004-0135  
Expires: July 31, 2010

**SUNDRY NOTICES AND REPORTS ON WELLS**  
*Do not use this form for proposals to drill or to re-enter an abandoned well. Use form 3160-3 (APD) for such proposals.*

**SUBMIT IN TRIPLICATE - Other instructions on reverse side.**

1. Type of Well <input type="checkbox"/> Oil Well <input checked="" type="checkbox"/> Gas Well <input type="checkbox"/> Other		5. Lease Serial No. NMSF078094
2. Name of Operator XTO ENERGY INC		6. If Indian, Allottee or Tribe Name
3a. Address ENGLEWOOD, CO 80155		7. If Unit or CA/Agreement, Name and/or No.
3b. Phone No. (include area code) Ph: 505-333-3206		8. Well Name and No. FULLERTON FEDERAL 6E
4. Location of Well (Footage, Sec., T., R., M., or Survey Description) Sec 11 T27N R11W NWNE 790FNL 1850FEL 36.594650 N Lat, 107.969930 W Lon		9. API Well No. 30-045-24639-00-C1
		10. Field and Pool, or Exploratory BASIN DAKOTA WEST KUTZ GALLUP
		11. County or Parish, and State SAN JUAN COUNTY, NM

12. CHECK APPROPRIATE BOX(ES) TO INDICATE NATURE OF NOTICE, REPORT, OR OTHER DATA

TYPE OF SUBMISSION	TYPE OF ACTION			
<input checked="" type="checkbox"/> Notice of Intent	<input type="checkbox"/> Acidize	<input type="checkbox"/> Deepen	<input type="checkbox"/> Production (Start/Resume)	<input type="checkbox"/> Water Shut-Off
<input type="checkbox"/> Subsequent Report	<input type="checkbox"/> Alter Casing	<input type="checkbox"/> Fracture Treat	<input type="checkbox"/> Reclamation	<input type="checkbox"/> Well Integrity
<input type="checkbox"/> Final Abandonment Notice	<input type="checkbox"/> Casing Repair	<input type="checkbox"/> New Construction	<input type="checkbox"/> Recomplete	<input type="checkbox"/> Other
	<input type="checkbox"/> Change Plans	<input checked="" type="checkbox"/> Plug and Abandon	<input type="checkbox"/> Temporarily Abandon	
	<input type="checkbox"/> Convert to Injection	<input type="checkbox"/> Plug Back	<input type="checkbox"/> Water Disposal	

13. Describe Proposed or Completed Operation (clearly state all pertinent details, including estimated starting date of any proposed work and approximate duration thereof. If the proposal is to deepen directionally or recompleat horizontally, give subsurface locations and measured and true vertical depths of all pertinent markers and zones. Attach the Bond under which the work will be performed or provide the Bond No. on file with BLM/BIA. Required subsequent reports shall be filed within 30 days following completion of the involved operations. If the operation results in a multiple completion or recompleat in a new interval, a Form 3160-4 shall be filed once testing has been completed. Final Abandonment Notices shall be filed only after all requirements, including reclamation, have been completed, and the operator has determined that the site is ready for final inspection.)

XTO Energy Inc, received verbal approval from Brandon Powell w/NMOCD on 2/3/16 and Jack Savage on 2/4/16, to set a RBP @ 5,732' over the GP/DK perms and P&A well within 90 days due to a casing leak.

XTO Energy Inc, requests permission to Plug and Abandon this well per the attached procedure. A Closed Loop System will be used. Please see attached Current and Proposed WBD. Please also see the attached updated Surface Reclamation Plan.

Notify NMOCD 24 hrs  
prior to beginning  
operations

OIL CONS. DIV DIST. 3

FEB 29 2016

**BLM'S APPROVAL OR ACCEPTANCE OF THIS ACTION DOES NOT RELIEVE THE LESSEE AND OPERATOR FROM OBTAINING ANY OTHER AUTHORIZATION REQUIRED FOR OPERATIONS ON FEDERAL AND INDIAN LANDS**

14. I hereby certify that the foregoing is true and correct. Electronic Submission #331645 verified by the BLM Well Information System For XTO ENERGY INC, sent to the Farmington Committed to AFMSS for processing by MIKE FLANIKEN on 02/25/2016 (16MXF0073SE)	
Name (Printed/Typed) KRISTEN LYNCH	Title REGULATORY ANALYST
Signature (Electronic Submission)	Date 02/16/2016

**THIS SPACE FOR FEDERAL OR STATE OFFICE USE**

Approved By JACK SAVAGE	Title PETROLEUM ENGINEER	Date 02/25/2016
Conditions of approval, if any, are attached. Approval of this notice does not warrant or certify that the applicant holds legal or equitable title to those rights in the subject lease which would entitle the applicant to conduct operations thereon.		
Office Farmington		

Title 18 U.S.C. Section 1001 and Title 43 U.S.C. Section 1212, make it a crime for any person knowingly and willfully to make to any department or agency of the United States any false, fictitious or fraudulent statements or representations as to any matter within its jurisdiction.

**\*\* BLM REVISED \*\* BLM REVISED \*\* BLM REVISED \*\* BLM REVISED \*\* BLM REVISED \*\***

**NMOCD**

KC  
9



**Fullerton Federal #6E  
Sec 11, T 27 N, R 11 W  
San Juan County, New Mexico  
2/8/2016**

**Plug and Abandon DK/GP Procedure**

**AFE Number:** 1600920 (GP), 1600918 (DK)  
**Spud Date:** 11/8/1980  
**Surface Casing:** 8-5/8", 24#, K-55 csg @ 540'. Cmt'd w/375 sx. Circ cmt to surf.  
**Production Casing:** 4-1/2", 10.5#, K-55 csg @ 6,550'. DV tl @ 4,840'. Cmt'd w/1,625 sx Class B cmt in 2 stages. Circ cmt to surf.  
*Capacity: .0159 bbls/ft or .6699 gal/ft*  
**Casing Leaks:** Squeeze leaks (1980) fr/4,249' – 4,310'  
**Production Tubing:** 2-3/8" string  
**Other in Hole:** RBP @ 5,732'  
**Perforations:** Gallup: 5,753' – 5,834'  
Dakota: 6,370' – 6,394'  
**PBTD:** 6,487'  
**Recent Production:** 0 mcfpd, 0 bwpd, 0 bopd (casing leak).

*\*Notify NMOCD & BLM 24 hours prior to beginning plugging operations\**

1. Check for COA's and approved NOI before beginning operations.
2. Test rig anchors.
3. Set flowback tank.
4. MIRU completion rig. Review JSA.
5. Kill well.
6. ND WH. NU & FT BOP.
7. TOH tubing.
8. TIH on-off tool. Unset RBP @ 5,732'. TOH.
9. TIH 4-1/2" CICR and set @ ±6,350'. PT tubing.

10. MIRU cement truck. Review JSA.

*\*Casing will not pressure test. All plugs must be tagged until casing pressure tests.\**

11. **Perforation Isolation & Dakota Top Plug (6,350' – 6,247')**: Pump 12 sx Class "B" cement (15.6 ppg, 1.18 cuft/sx yield) down tubing and spot a balanced plug from 6,350' – 6,247' (volume calculated with 50' excess). WOC. Tag plug.
12. TOH tubing. TIH 4-1/2" CICR and set @ ±5,703'.
13. **Perforation Isolation & Gallup Top Plug (5,703' – 5,348')**: Pump 31 sx Class "B" cement (15.6 ppg, 1.18 cuft/sx yield) down tubing and spot a balanced plug from 5,703' – 5,348' (volume calculated with 50' excess). WOC. Tag plug.
14. **Mancos Top Plug (4,607' – 4,507')**: Pump 12 sx Class "B" cement (15.6 ppg, 1.18 cuft/sx yield) down tubing and spot a balanced plug from 4,607' – 4,507' (volume calculated with 50' excess). WOC. Tag plug.
15. **Mesaverde Top Plug (3,429' – 3,329')**: Pump 12 sx Class "B" cement (15.6 ppg, 1.18 cuft/sx yield) down tubing and spot a balanced plug from 3,429' – 3,329' (volume calculated with 50' excess). WOC.
16. Attempt to pressure test casing fr/3,329' – surface to 500 psig with chart for 30 minutes. If casing doesn't pressure test, contact engineer.
17. **Chacra Top Plug (2,801' – 2,701')**: Pump 12 sx Class "B" cement (15.6 ppg, 1.18 cuft/sx yield) down tubing and spot a balanced plug from 2,801' – 2,701' (volume calculated with 50' excess).
18. **Pictured Cliffs Top Plug (1,909' – 1,809')**: Pump 12 sx Class "B" cement (15.6 ppg, 1.18 cuft/sx yield) down tubing and spot a balanced plug from 1,909' – 1,809' (volume calculated with 50' excess).
19. **Fruitland Coal Top Plug (1,482' – 1,382')**: Pump 12 sx Class "B" cement (15.6 ppg, 1.18 cuft/sx yield) down tubing and spot a balanced plug from 1,482' – 1,382' (volume calculated with 50' excess).
20. **Kirtland and Ojo Top Plug (909' – 662')**: Pump 23 sx Class "B" cement (15.6 ppg, 1.18 cuft/sx yield) down tubing and spot a balanced plug from 909' – 662' (volume calculated with 50' excess).
21. **Surface Casing Shoe Plug (590' – 490')**: Pump 12 sx Class "B" cement (15.6 ppg, 1.18 cuft/sx yield) down tubing and spot a balanced plug from 590' – 490' (volume calculated with 50' excess).
22. **Surface Plug (100' – Surface)**: Pump 12 sx Class "B" cement (15.6 ppg, 1.18 cuft/sx yield) down tubing and spot a balanced plug from 100' – Surface (volume calculated with 50' excess).
23. TOH & LD tubing.
24. RDMO cement truck.
25. WOC 4 hours.
26. Cut off WH. Fill in casing as needed with cement. Install above ground P&A marker.
27. Cut off anchors and reclaim location.
28. RDMO completion rig.

## Checklist

### Regulatory:

1. NOI to P&A on form C-103 & 3160-5
2. Submit a post-work sundry on form C-103 & 3160-5 which details the P&A work within 30 days.

### Equipment:

1. 1 flowback tank
2. If tbq doesn't PT, 6,400' workstring
3. 2 - 4-1/2" cement retainers
4. 150 sx Class "B" cement

### Services:

1. Completion rig
2. Cement truck

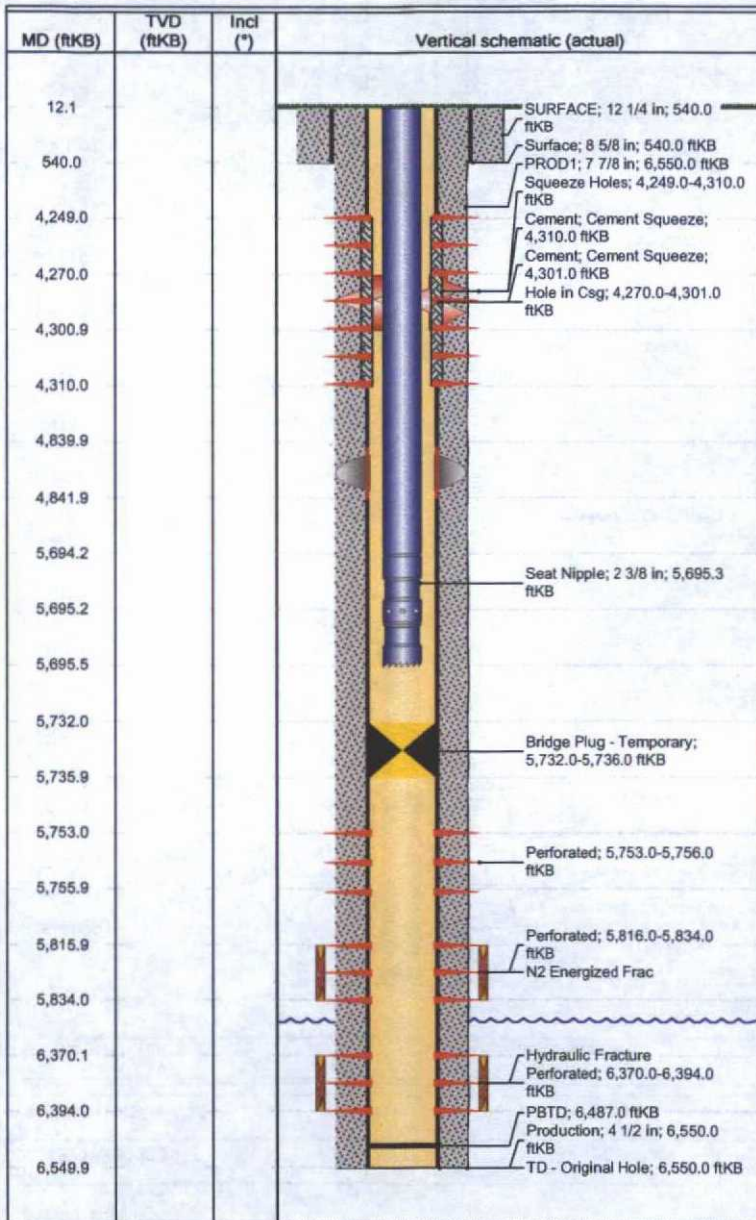




## Downhole Well Profile - with Schematic

Well Name: Fullerton Federal 06E

API/UWI 30045246390000	XTO Accounting ID 78700	Permit Number	State/Province New Mexico	County San Juan
Location T27N-R11W-S11	Spud Date 11/8/1980 00:00	Original KB Elevation (ft) 6,043.00	Ground/Corrected Ground Elevation (ft) 6,031.00	KB-Ground Distance (ft) 12.00



Wellbores							
Wellbore Name Original Hole		Parent Wellbore Original Hole		Wellbore API/UWI			
Start Depth (ftKB)		Profile Type		Kick Off Depth (ftKB)			
12.0							
Section Des		Size (in)	Act Top (ftKB)	Act Btm (ftKB)			
SURFACE		12 1/4	12.0	540.0			
PROD1		7 7/8	540.0	6,550.0			
Zones							
Zone Name		Top (ftKB)	Btm (ftKB)	Current Status			
Gallup		5,753.0	5,834.0				
Dakota		6,370.0	6,394.0				
Casing Strings							
Csg Des	Set Depth (ftKB)	OD (in)	Wt/Len (lb/ft)	Grade			
Surface	540.0	8 5/8	24.00	K-55			
Production	6,550.0	4 1/2	10.50	K-55			
Cement							
Des		Type		String			
Surface Casing Cement		Casing		Surface, 540.0ftKB			
Production Casing Cement		Casing		Production, 6,550.0ftKB			
Cement Squeeze		Squeeze		Production, 6,550.0ftKB			
Cement Squeeze		Squeeze		Production, 6,550.0ftKB			
Tubing Strings							
Tubing Description		Run Date		Set Depth (ftKB)			
Tubing - Production		2/4/2016		5,695.7			
Item Des	OD (in)	Wt (lb/ft)	Grade	Jts	Len (ft)	Top (ftKB)	Btm (ftKB)
Tubing	2 3/8	4.70	J-55	179	5,682.20	12.0	5,694.2
Seat Nipple	2 3/8			1	1.10	5,694.2	5,695.3
Notched Collar	2 3/8			1	0.40	5,695.3	5,695.7
Rod Strings							
Rod Description		Run Date			Set Depth (ftKB)		
Item Des	OD (in)	Wt (lb/ft)	Grade	Jts	Len (ft)	Top (ftKB)	Btm (ftKB)
Other In Hole							
Run Date	Des		OD (in)	Top (ftKB)		Btm (ftKB)	
9/18/2001	Hole in Csg		4 1/2	4,270.0		4,301.0	
2/3/2016	Bridge Plug - Temporary		4	5,732.0		5,736.0	
Perforations							
Date	Top (ftKB)		Btm (ftKB)		Zone		
2/23/2009	4,249.0		4,310.0				
2/19/2009	5,753.0		5,756.0		Gallup, Original Hole		
9/18/2001	5,816.0		5,834.0		Gallup, Original Hole		
12/17/1980	6,370.0		6,394.0		Dakota, Original Hole		





## Downhole Well Profile - with Schematic

Well Name: Fullerton Federal 06E

API/UWI 30045246390000	XTO Accounting ID 78700	Permit Number	State/Province New Mexico	County San Juan
Location T27N-R11W-S11	Spud Date 11/8/1980 00:00	Original KB Elevation (ft) 6,043.00	Ground/Corrected Ground Elevation (ft) 6,031.00	KB-Ground Distance (ft) 12.00

MD (ftKB)	TVD (ftKB)	Incl (°)	Vertical schematic (actual)
12.1			<p>SURFACE; 12 1/4 in; 540.0 ftKB Surface; 8 5/8 in; 540.0 ftKB PROD1; 7 7/8 in; 6,550.0 ftKB Squeeze Holes; 4,249.0-4,310.0 ftKB Cement; Cement Squeeze; 4,310.0 ftKB Cement; Cement Squeeze; 4,301.0 ftKB Hole in Csg; 4,270.0-4,301.0 ftKB  Seat Nipple; 2 3/8 in; 5,695.3 ftKB  Bridge Plug - Temporary; 5,732.0-5,736.0 ftKB  Perforated; 5,753.0-5,756.0 ftKB  Perforated; 5,816.0-5,834.0 ftKB N2 Energized Frac  Hydraulic Fracture Perforated; 6,370.0-6,394.0 ftKB PBTD; 6,487.0 ftKB Production; 4 1/2 in; 6,550.0 ftKB TD - Original Hole; 6,550.0 ftKB</p>
540.0			
4,249.0			
4,270.0			
4,300.9			
4,310.0			
4,839.9			
4,841.9			
5,694.2			
5,695.2			
5,695.5			
5,732.0			
5,735.9			
5,753.0			
5,755.9			
5,815.9			
5,834.0			
6,370.1			
6,394.0			
6,549.9			

Stimulations & Treatments						
Frac #	Top Perf (ftKB)	Bottom Perf (ftKB)	AIR (bbl/min)	MIR (bbl/min)	TWP (bbl)	Total Proppant (lb)
	5,753	5,756	2.5	2.50	3.0	0.0
	6,370	6,394	2.0	2.00	13.0	0.0
	5,816	5,834	2.0	2.00	35.0	0.0

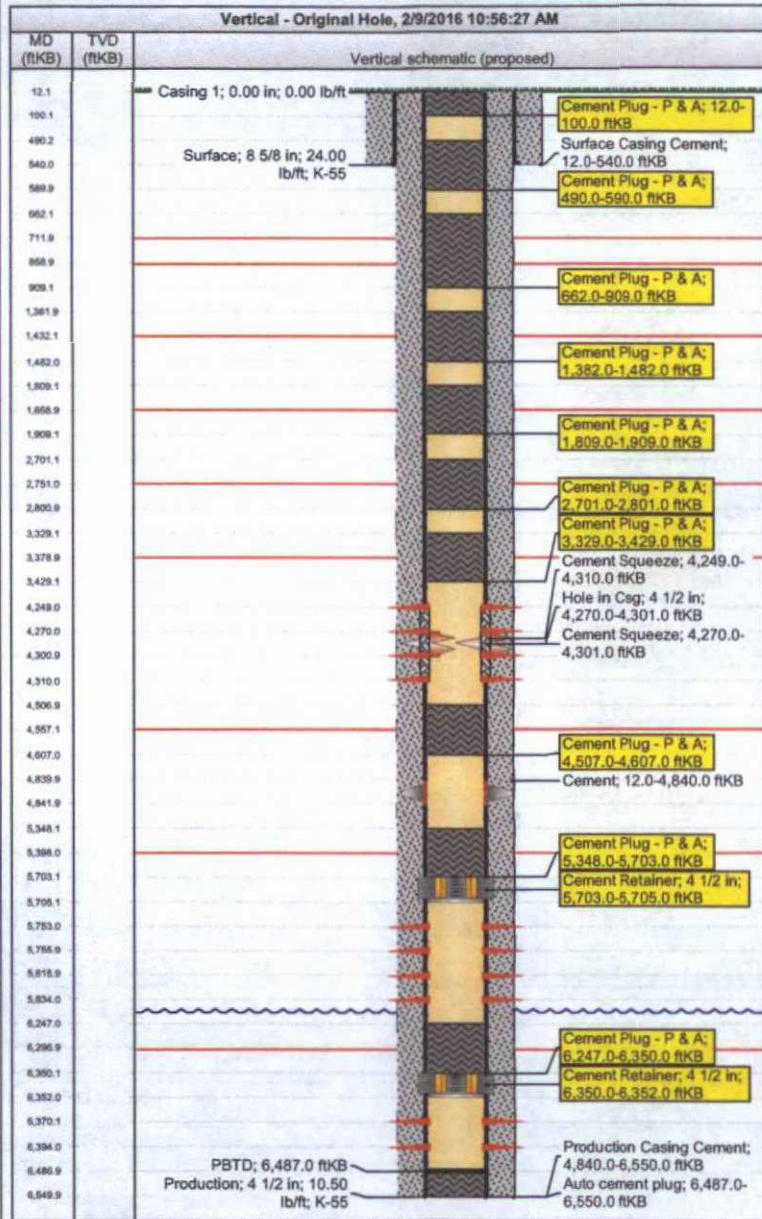




# XTO - Proposed P&A Wellbore Diagram

Well Name: Fullerton Federal 06E

API/UWI 30045246390000	XTO Accounting ID 78700	Permit Number	State/Province New Mexico	County San Juan
Location T27N-R11W-S11	Spud Date 11/8/1980 00:00	Original KB Elevation (ft) 6,043.00	Ground/Corrected Ground Elevation (ft) 6,031.00	KB-Ground Distance (ft) 12.00



Formations		
Formation Name	Final Top MD (ftKB)	Final Bottom MD (ftKB)
Ojo Alamo	712.0	859.0
Formation Name	Final Top MD (ftKB)	Final Bottom MD (ftKB)
Kirtland	859.0	1,432.0
Formation Name	Final Top MD (ftKB)	Final Bottom MD (ftKB)
Fruitland Coal	1,432.0	1,859.0
Formation Name	Final Top MD (ftKB)	Final Bottom MD (ftKB)
Pictured Cliffs	1,859.0	2,751.0
Formation Name	Final Top MD (ftKB)	Final Bottom MD (ftKB)
Chacra	2,751.0	3,379.0
Formation Name	Final Top MD (ftKB)	Final Bottom MD (ftKB)
Mesaverde	3,379.0	4,557.0
Formation Name	Final Top MD (ftKB)	Final Bottom MD (ftKB)
Mancos	4,557.0	5,398.0
Formation Name	Final Top MD (ftKB)	Final Bottom MD (ftKB)
Gallup	5,398.0	6,297.0
Formation Name	Final Top MD (ftKB)	Final Bottom MD (ftKB)
Dakota	6,297.0	

Wellbores		
Wellbore Name	Parent Wellbore	
Original Hole	Original Hole	
Start Depth (ftKB)	12.0	Kick Off Depth (ftKB)

Casing Strings				
Csg Des	Set Depth (ftKB)	OD (in)	Wt/Len (lb/ft)	Grade
Surface	540.0	8 5/8	24.00	K-55
Production	6,550.0	4 1/2	10.50	K-55

Cement			
Des	Type	String	Com
Surface Casing Cement	Casing	Surface, 540.0ftKB	Cmt'd w/375 SX CL "B" cmt w/2% CaCl2. Circ cmt.
Production Casing Cement	Casing	Production, 6,550.0ftKB	Cmt'd Stg 1 w/375 sx Class "B" cmt w/4% gel & 0.5% d-65 + 200 sx Class "B" neat. Circ cmt. cmt'd Stg 2 w/950 sx gulfmix 16% gel + 100 sx Class "B" neat. Circ cmt.
Cement Squeeze	Squeeze	Production, 6,550.0ftKB	Sqzd w/250 sx Class "B" cmt w/2% CaCl2.
Cement Squeeze	Squeeze	Production, 6,550.0ftKB	Sqz csg lks fr/4,249'-4,310'.
Cement Plug - P & A	Plug	Production, 6,550.0ftKB	Plug 7: Pump 12 sx fr/1,482' - 1,382'
Cement Plug - P & A	Plug	Production, 6,550.0ftKB	Plug 6: Pump 12 sx fr/1,909' - 1,809'
Cement Plug - P & A	Plug	Production, 6,550.0ftKB	Plug 8: Pump 23 sx fr/909' - 662'
Cement Plug - P & A	Plug	Production, 6,550.0ftKB	Plug 10: Pump 12 sx fr/100' - surface

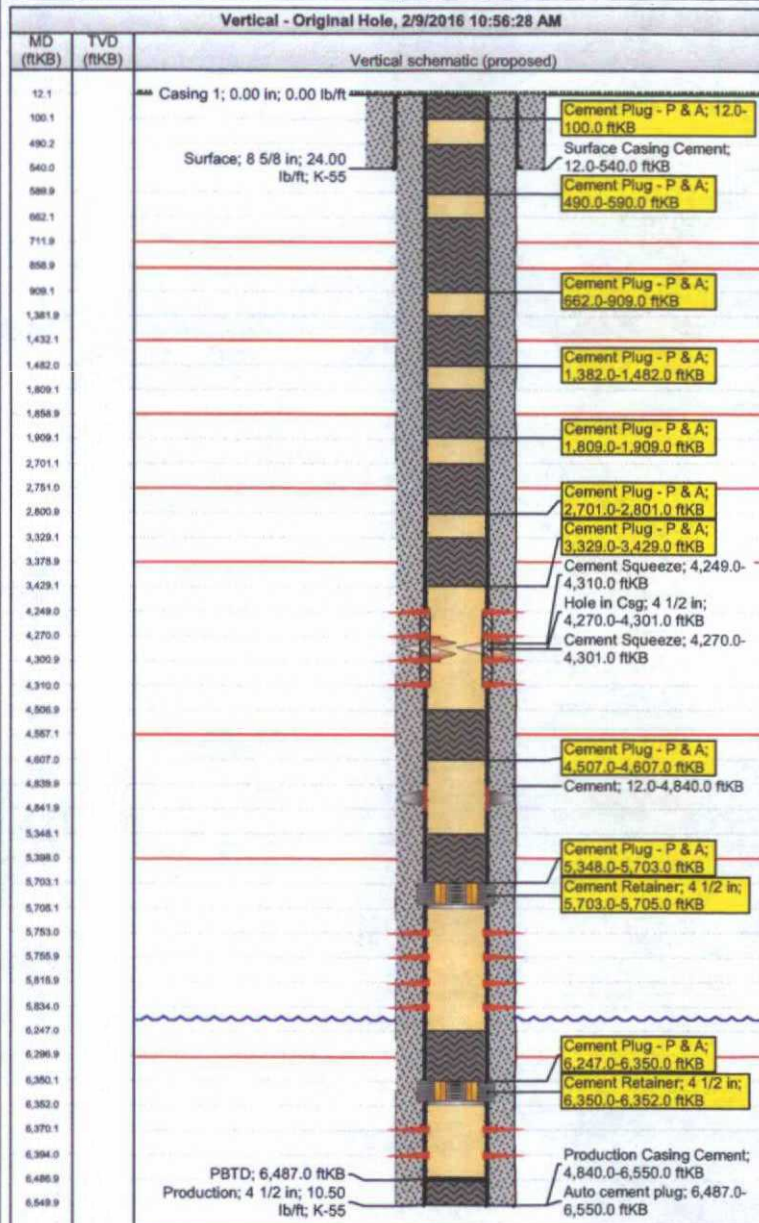




# XTO - Proposed P&A Wellbore Diagram

Well Name: Fullerton Federal 06E

API/UWI 30045246390000	XTO Accounting ID 78700	Permit Number	State/Province New Mexico	County San Juan
Location T27N-R11W-S11	Spud Date 11/8/1980 00:00	Original KB Elevation (ft) 6,043.00	Ground/Corrected Ground Elevation (ft) 6,031.00	KB-Ground Distance (ft) 12.00



Des	Type	String	Com
Cement Plug - P & A	Plug	Production, 6,550.0ftKB	Plug 9: Pump 12 sx fr/590' - 490'
Cement Plug - P & A	Plug	Production, 6,550.0ftKB	Plug 2: Pump 31 sx fr/5,703' - 5,348'
Cement Plug - P & A	Plug	Production, 6,550.0ftKB	Plug 1: Pump 12 sx fr/6,350' - 6,247'
Cement Plug - P & A	Plug	Production, 6,550.0ftKB	Plug 3: Pump 12 sx fr/4,607' - 4,507'
Cement Plug - P & A	Plug	Production, 6,550.0ftKB	Plug 5: Pump 12 sx fr/2,801' - 2,701'
Cement Plug - P & A	Plug	Production, 6,550.0ftKB	Plug 4: Pump 12 sx fr/3,429' - 3,329'

## Perforations

Date	Top (ftKB)	Btm (ftKB)	Zone
2/23/2009	4,249.0	4,310.0	
2/19/2009	5,753.0	5,756.0	Gallup, Original Hole
9/18/2001	5,816.0	5,834.0	Gallup, Original Hole
12/17/1980	6,370.0	6,394.0	Dakota, Original Hole

## Other In Hole

Des	OD (in)	Top (ftKB)	Btm (ftKB)
Hole in Csg	4 1/2	4,270.0	4,301.0
Cement Retainer	4 1/2	5,703.0	5,705.0
Cement Retainer	4 1/2	6,350.0	6,352.0



UNITED STATES DEPARTMENT OF THE INTERIOR  
BUREAU OF LAND MANAGEMENT  
FARMINGTON DISTRICT OFFICE  
6251 COLLEGE BLVD.  
FARMINGTON, NEW MEXICO 87402

Attachment to notice of  
Intention to Abandon:

Re: Permanent Abandonment  
Well: Fullerton Federal #6E

CONDITIONS OF APPROVAL

1. Plugging operations authorized are subject to the attached "General Requirements for Permanent Abandonment of Wells on Federal and Indian Lease."

2. Farmington Office is to be notified at least 24 hours before the plugging operations commence (505) 564-7750.

3. The following modifications to your plugging program are to be made:

- a) Set plug #1 (6320-6247) ft. to isolate the perforations and cover the Dakota top. Setting depth of plug must be 50 ft. above top of perforations. BLM picks top of Dakota at 6297 ft.
- b) Set plug #2 (4582-4482) ft. to cover the Mancos top. BLM picks top of Mancos at 4532 ft.
- c) Set plug #3 (3447-3347) ft. to cover the Mesaverde top. BLM picks top of Cliff House at 3397 ft.
- d) Set plug #7 (1613-1513) ft. to cover the Fruitland Coal top. BLM picks top of Fruitland at 1563 ft.

Low concentrations of H<sub>2</sub>S (2 ppm – 15 ppm GSV) have been reported in wells within a 1 mile area of this location.

You are also required to place cement excesses per 4.2 and 4.4 of the attached General Requirements.

Office Hours: 7:45 a.m. to 4:30 p.m.