

Submit 1 Copy To Appropriate District Office
District I - (575) 393-6161
1625 N. French Dr., Hobbs, NM 88240
District II - (575) 748-1283
811 S. First St., Artesia, NM 88210
District III - (505) 334-6178
1000 Rio Brazos Rd., Aztec, NM 87410
District IV - (505) 476-3460
1220 S. St. Francis Dr., Santa Fe, NM 87505

State of New Mexico
Energy, Minerals and Natural Resources

OIL CONSERVATION DIVISION
1220 South St. Francis Dr.
Santa Fe, NM 87505

Form C-103
Revised August 1, 2011

SUNDRY NOTICES AND REPORTS ON WELLS (DO NOT USE THIS FORM FOR PROPOSALS TO DRILL OR TO DEEPEN OR PLUG BACK TO A DIFFERENT RESERVOIR. USE "APPLICATION FOR PERMIT" (FORM C-101) FOR SUCH PROPOSALS.)		WELL API NO. 30-039-31317
1. Type of Well: Oil Well <input checked="" type="checkbox"/> Gas Well <input type="checkbox"/> Other <input type="checkbox"/>		5. Indicate Type of Lease STATE <input type="checkbox"/> FEE <input type="checkbox"/>
2. Name of Operator WPX Energy Production, LLC		6. State Oil & Gas Lease No. NMSF-078767
3. Address of Operator P. O. Box 640, Aztec, NM 87410 (505) 333-1808		7. Lease Name or Unit Agreement Name NMNM 78407E Rosa Unit
4. Well Location Unit Letter <u>C</u> : <u>972'</u> feet from the <u>FNL</u> line and <u>510'</u> feet from the <u>FWL</u> line Section <u>19</u> Township <u>31N</u> Range <u>5W</u> NMPM County <u>Rio Arriba</u>		8. Well Number #643H
11. Elevation (Show whether DR, RKB, RT, GR, etc.) <u>6305' GR</u>		9. OGRID Number 120782
		10. Pool name or Wildcat Basin Mancos

12. Check Appropriate Box to Indicate Nature of Notice, Report or Other Data

NOTICE OF INTENTION TO:

PERFORM REMEDIAL WORK ☐ PLUG AND ABANDON ☐
TEMPORARILY ABANDON ☐ CHANGE PLANS ☐
PULL OR ALTER CASING ☐ MULTIPLE COMPL ☐
DOWNHOLE COMMINGLE ☐

OTHER: ☐

SUBSEQUENT REPORT OF:

REMEDIAL WORK ☐ ALTERING CASING ☐
COMMENCE DRILLING OPNS. ☐ P AND A ☐
CASING/CEMENT JOB ☐

OTHER: **INTER-WELL COMMUNICATION**
☒

13. Describe proposed or completed operations. (Clearly state all pertinent details, and give pertinent dates, including estimated date of starting any proposed work). SEE RULE 19.15.7.14 NMAC. For Multiple Completions: Attach wellbore diagram of proposed completion or recompletion.

WPX Energy conducted stimulation on the following well:

Start date: 11/7/15
End date: 11/23/15
Type: Fracture Treatment
Pressure: 7399psi
Volume Average: Nitrogen - N/A (scf); Sand - 363,607 (lbs); Fluid - 334,606 (gals)
Results of any investigation conducted: N/A

OIL CONS. DIV DIST. 3

DEC 07 2015

Attached: Spreadsheet with affected well due to stimulation activity.

Spud Date:

Rig Release Date:

I hereby certify that the information above is true and complete to the best of my knowledge and belief.

SIGNATURE Marie E. Jaramillo TITLE Permit Tech DATE 12/4/15

Type or print name Marie E. Jaramillo E-mail address: marie.jaramillo@wpxenergy.com PHONE: (505) 333-1808 For

State Use Only

APPROVED BY: **ACCEPTED FOR RECORD** TITLE AY DATE

Conditions of Approval (if any):

Affected Wells

Well Name	API number	Formation	Operator	Date Affected	Type Communication	Volume of Communication	Highest PSI Observed	Standard Operating PSI	Results of Communication	Results of any Investigation Conducted
Rosa Unit 19C	30-039-29625	Blanco Mesaverde	WPX	11/9/2015	Increase PSI	N/A	144	79	Continue to Flow	No Gas Analysis/Well was not shut in due to no Nitrogen/No Harm was done
Rosa Unit 10B	30-039-26556	Blanco Mesaverde	WPX	11/15/2015	Increase PSI	N/A	196	96	Continue to Flow	No Gas Analysis/Well was not shut in due to no Nitrogen/No Harm was done
Rosa Unit 125C	30-039-29843	Blanco Mesaverde	WPX	11/18/2015	Increase PSI	N/A	140	100	Continue to Flow	No Gas Analysis/Well was not shut in due to no Nitrogen/No Harm was done
Stimulated Well: Rosa Unit 643H										

Stimulated well
39-31317

No CBL
711 casing
6443 M
6351 TVD
~perfs 7550-12355
7205-7169

District I
1625 N. French Drive, Hobbs, NM 88240
Phone: (575) 393-6161 Fax: (575) 393-0720

District II
811 S. First Street, Artesia, NM 88210
Phone: (575) 748-1283 Fax: (575) 748-9720

District III
1000 Rio Brazos Road, Aztec, NM 87410
Phone: (505) 334-6178 Fax: (505) 334-6170

District IV
1220 S. St. Francis Drive, Santa Fe, NM 87505
Phone: (505) 476-3460 Fax: (505) 476-3462

State of New Mexico
Energy, Minerals & Natural Resources Department

Form C-102
Revised August 1, 2011

Submit one copy to
Appropriate District Office

OIL CONSERVATION DIVISION
1220 South St. Francis Drive
Santa Fe, NM 87505

☐ AMENDED REPORT

WELL LOCATION AND ACREAGE DEDICATION PLAT

*API Number 30.039.31317	*Pool Code 97232	*Pool Name BASIN MANCOS
*Property Code 17033	*Property Name Rosa Unit	*Well Number 643H
*GRID No. 120782	*Operator Name WPX ENERGY PRODUCTION, LLC	*Elevation 6305'

10 Surface Location

UL or lot no.	Section	Township	Range	Lot Idn	Feet from the	North/South line	Feet from the	East/West line	County
C	19	31N	5W	1	972	NORTH	510	WEST	RIO ARriba

11 Bottom Hole Location If Different From Surface

UL or lot no.	Section	Township	Range	Lot Idn	Feet from the	North/South line	Feet from the	East/West line	County
E	24	31N	6W		1943	NORTH	73	WEST	RIO ARriba

*Dedicated Acres	N/2 - Section 19, T31N, R5W	*Joint or Infill		*Consolidation Code		*Order No.	
503.91	N/2 - Section 24, T31N, R6W						

NO ALLOWABLE WILL BE ASSIGNED TO THIS COMPLETION UNTIL ALL INTERESTS HAVE BEEN CONSOLIDATED OR A NON-STANDARD UNIT HAS BEEN APPROVED BY THE DIVISION

END-OF-LATERAL
1943' FNL 73' FNL
SECTION 24, T31N, R6W
LAT: 36.887031°N
LONG: 107.406470°W
DATUM: NAD1927

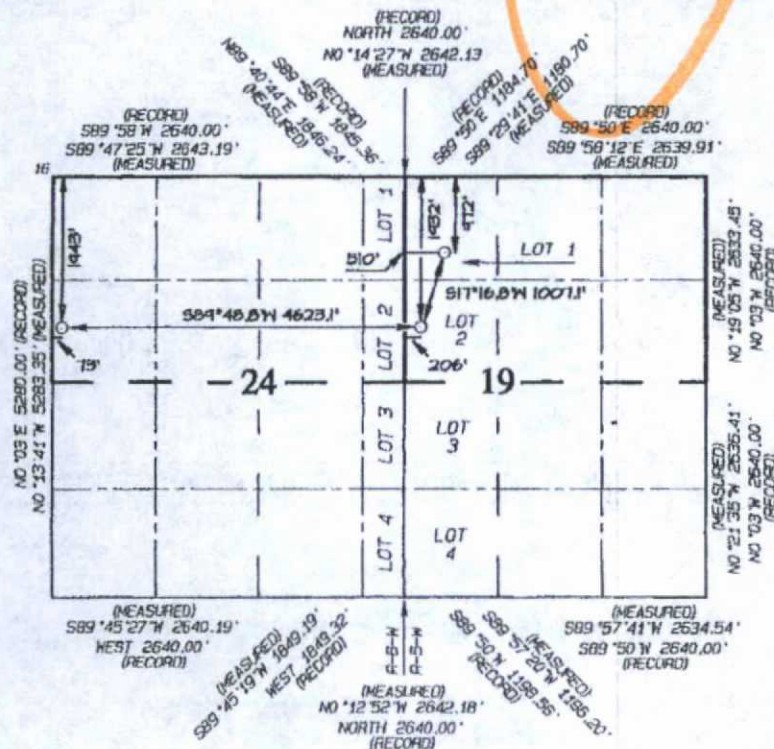
LAT: 36.887037°N
LONG: 107.422882°W
DATUM: NAD1983

POINT-OF-ENTRY
1932' FNL 205' FNL
SECTION 19, T31N, R5W
LAT: 36.887017°N
LONG: 107.406470°W
DATUM: NAD1927

LAT: 36.887023°N
LONG: 107.407073°W
DATUM: NAD1983

SURFACE LOCATION
972' FNL 510' FNL
SECTION 19, T31N, R5W
LAT: 36.889656°N
LONG: 107.405433°W
DATUM: NAD1927

LAT: 36.889661°N
LONG: 107.406036°W
DATUM: NAD1983



17 OPERATOR CERTIFICATION

I hereby certify that the information contained herein is true and complete to the best of my knowledge and belief, and that this organization either owns a working interest or unleased mineral interest in the land including the proposed bottom-hole location or has a right to drill this well at this location pursuant to a contract with an owner of such a mineral or working interest, or to a voluntary pooling agreement or a compulsory pooling order heretofore entered by the division.

Signature: Andrea Felix Date: 7/17/15

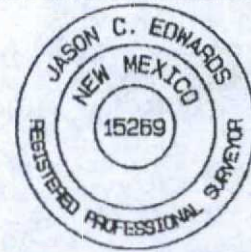
Printed Name: Andrea Felix
E-mail Address: andrea.felix@wpxenergy.com

18 SURVEYOR CERTIFICATION

I hereby certify that the well location shown on this plat was plotted from field notes of actual surveys made by me or under my supervision and that the same is true and correct to the best of my belief.

Date Revised: MARCH 6, 2015
Date of Survey: JANUARY 2, 2015

Signature and Seal of Professional Surveyor



JASON C. EDWARDS
Certificate Number 15269

WPXENERGY

WPX ENERGY

Operations Plan

(Note: This procedure will be adjusted on site based upon actual conditions)

DATE: 4/14/15 **FIELD:** Basin Mancos

WELL NAME: ROSA UT 27 #104H **SURFACE:** BLM

SH Location: NWNW Sec 19-31N-05W **ELEVATION:** 6305' GR

BH Location: SWNW Sec 24-31N-06W **MINERALS:** BLM
Rio Arriba, NM

MEASURED DEPTH: 12425'

I. **GEOLOGY:** Surface formation – San Jose

A. **FORMATION TOPS:** (KB)

Name	MD	TVD	Name	MD	TVD
Ojo Alamo	2455	2428	Point Lookout	5722	5638
Kirtland	2554	2525	Mancos	6034	5944
Picture Cliffs	3394	3350	Kickoff Point	6559	6480
Lewis	3669	3621	Top Target	7437	7172
Chacra	4638	4573	Landing Point	7758	7245
Cliff House	5445	5366	Base Target	7758	7245
Menefee	5491	5411	-		
			TD	12425	7137

B. **MUD LOGGING PROGRAM:** Mudlogger on location from surface csg to TD.

C. **LOGGING PROGRAM:** LWD GR from surface casing to TD.

D. **NATURAL GAUGES:** Gauge any noticeable increases in gas flow. Record all gauges in Tour book and on morning reports.

II. DRILLING

A. **MUD PROGRAM:** LSND mud (WBM) will be used to drill the 12-1/4" Surface hole and the 8 3/4" Directional Vertical hole of the wellbore. A LSND (WBM) or (OBM) will be used to drill the curve portion and the lateral portion of well. Treat for lost circulation as necessary. Obtain 100% returns prior to cementing. Notify Engineering of any mud losses.

B. **BOP TESTING:** While drill pipe is in use, the pipe rams and the blind rams will be function tested once each trip. The anticipated reservoir is expected to be less than 5000 psi, so the BOPE will be tested to **250 psi (Low) for 5 minutes** and **5000 psi (High) for 10 minutes**. Pressure test surface casing to **1500psi for 30 minutes** and intermediate casing to **1500 psi for 30 minutes**. Utilize a BOPE Testing Unit with a recording chart and appropriate test plug for testing. **All tests and inspections will be recorded in the tour book as to time and results.**

Impacted well #1
39-29625

CBL-looks good

District I
PO Box 1980, Hobbs, NM 88241-1980

District II
PO Drawer 00, Artesia, NM 88211-0719

District III
1000 Rio Brazos Rd., Aztec, NM 87430

District IV
PO Box 2088, Santa Fe, NM 87504-2088

State of New Mexico
Energy, Minerals & Natural Resources Department

OIL CONSERVATION DIVISION
PO Box 2088
Santa Fe, NM 87504-2088

Form C-102
Revised February 21, 1994
Instructions on back
Submit to Appropriate District Office
State Lease - 4 Copies
Fee Lease - 3 Copies

☐ AMENDED REPORT

WELL LOCATION AND ACREAGE DEDICATION PLAT

*API Number 30-039-29625		*Pool Code 72319	*Pool Name BLANCO MESAVERDE
*Property Code 17033	*Property Name ROSA UNIT		*Well Number 19C
*OGRID No. 120782	*Operator Name WILLIAMS PRODUCTION COMPANY		*Elevation 6224'

¹⁰ Surface Location

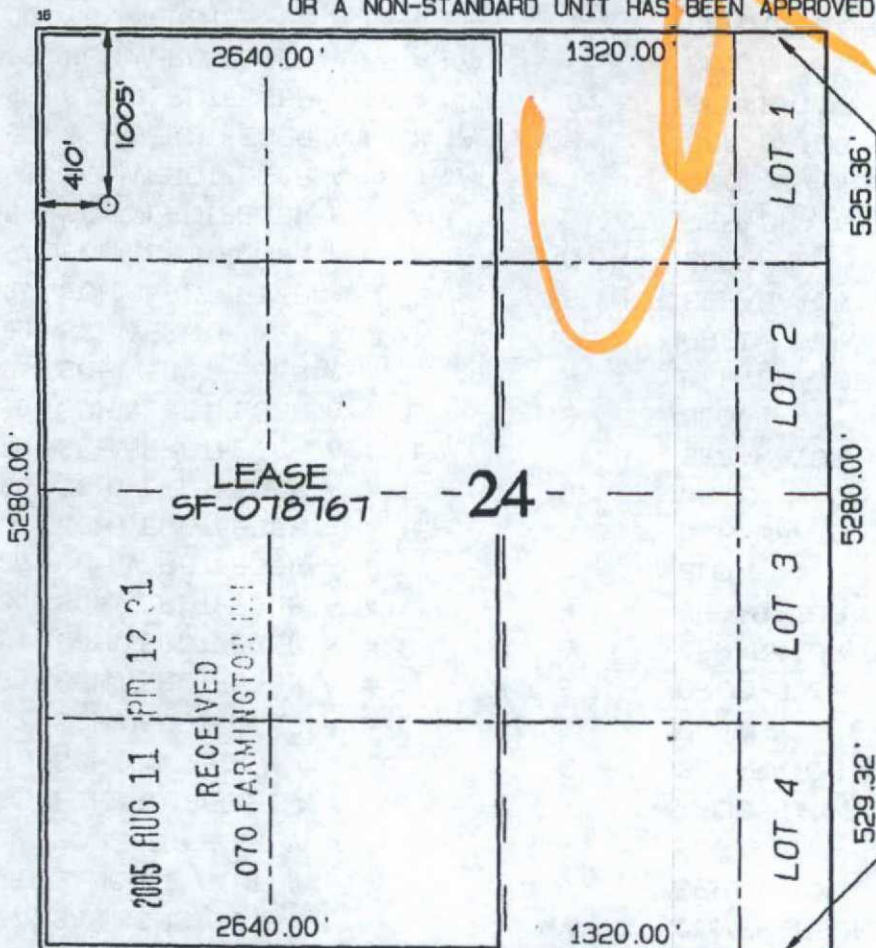
U. or lot no. D	Section 24	Township 31N	Range 6W	Lot Idn	Feet from the 1005	North/South line NORTH	Feet from the 410	East/West line WEST	County RIO ARriba
--------------------	---------------	-----------------	-------------	---------	-----------------------	---------------------------	----------------------	------------------------	----------------------

¹¹ Bottom Hole Location If Different From Surface

U. or lot no.	Section	Township	Range	Lot Idn	Feet from the	North/South line	Feet from the	East/West line	County
---------------	---------	----------	-------	---------	---------------	------------------	---------------	----------------	--------

¹² Dedicated Acres 320.0 Acres - (W/2)	¹³ Joint or Infill	¹⁴ Consolidation Code	¹⁵ Order No.
--	-------------------------------	----------------------------------	-------------------------

NO ALLOWABLE WILL BE ASSIGNED TO THIS COMPLETION UNTIL ALL INTERESTS HAVE BEEN CONSOLIDATED OR A NON-STANDARD UNIT HAS BEEN APPROVED BY THE DIVISION



¹⁷ OPERATOR CERTIFICATION

I hereby certify that the information contained herein is true and complete to the best of my knowledge and belief.

Signature
LARRY HIGGINS

Printed Name
DRILLURE COM

Title
8-4-05

Date

¹⁸ SURVEYOR CERTIFICATION

I hereby certify that the well location shown on this plat was plotted from field notes of actual surveys made by me or under my supervision, and that the same is true and correct to the best of my belief.

Date Revised: AUGUST 2, 2005
Survey Date: SEPTEMBER 21, 2004

Signature and Seal of Professional Surveyor



JASON C. EDWARDS
Certificate Number 15269

ROSA UNIT #19C BLANCO MESAVERDE

Location:

1005' FNL and 410' FWL
NW/4 NW/4 Sec 24(D), T31N R06W
Rio Arriba, New Mexico

Elevation: 6224' GR, 6238' KB
API #: 30-039-29625

Spud date: 04/30/07

Completed: 06/11/07

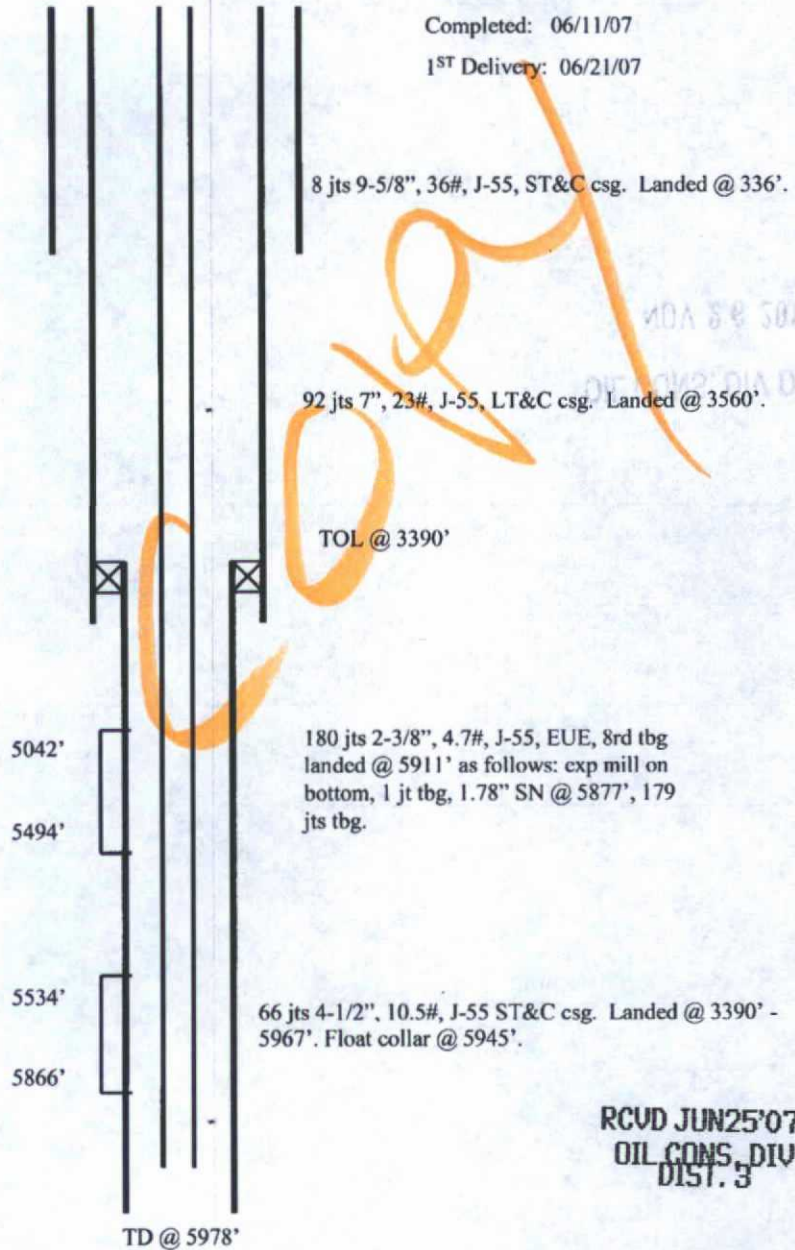
1ST Delivery: 06/21/07

Top	Depth
Fruitland Coal	2788'
Pictured Cliffs	3062'
Lewis	3370'
Huerfanito Bentonite	4042'
CliffHouse	5260'
Menefee	5302'
Point Lookout	5535'

STIMULATION

CliffHouse/Menefee: 5042' - 5494'
(70, 0.38" holes) Frac with 1645 bbls
slickwater, 10,140# 14/30 Lite Prop,
115 bbls slickwater & 3552# 20/40
brown sand.

Point Lookout: 5534' - 5866' (66,
0.38" holes) Frac with 1614 bbls
slickwater, 10,140# 14/30 Lite Prop,
68 bbls slickwater & 3552# 20/40
brown sand.



RCVD JUN25'07
OIL CONS. DIV.
DIST. 3

Hole Size	Casing	Cement	Volume	Top of CMT
12-1/4"	9-5/8", 36#	250 sxs	353 cu.ft.	surface
8-3/4"	7", 23#	550 sxs	1190 cu.ft.	surface
6-1/4"	4-1/2", 10.5#	200 sxs	420 cu.ft.	surface

District I
1625 N. French Dr., Hobbs, NM 88240
District II
1301 W. Grand Avenue, Artesia, NM 88210
District III
1000 Rio Brazos Rd., Aztec, NM 87410
District IV
1220 S. St. Francis Dr., Santa Fe, NM 87505

State of New Mexico
Energy, Minerals & Natural Resources

Form C-104
Revised June 10, 2003

Oil Conservation Division
1220 South St. Francis Dr.
Santa Fe, NM 87505

Submit to Appropriate District Office
5 Copies

☐ AMENDED REPORT

I. REQUEST FOR ALLOWABLE AND AUTHORIZATION TO TRANSPORT

¹ Operator name and Address WILLIAMS PRODUCTION COMPANY P O BOX 3102, MS 25-2 TULSA OK 74101		² OGRID Number 120782
		³ Reason for Filing Code/ Effective Date NW
⁴ API Number 30 - 039-29625	⁵ Pool Name BLANCO MESAVERDE	⁶ Pool Code 72319
⁷ Property Code 17033	⁸ Property Name ROSA UNIT	⁹ Well Number 19C

II. ¹⁰ Surface Location

UL or lot no. D	Section 24	Township 31N	Range 6W	Lot Idn	Feet from the 1005'	North/South Line NORTH	Feet from the 410'	East/West line WEST	County Rio Arriba
--------------------	---------------	-----------------	-------------	---------	------------------------	---------------------------	-----------------------	------------------------	----------------------

¹¹ Bottom Hole Location

UL or lot no.	Section	Township	Range	Lot Idn	Feet from the	North/South line	Feet from the	East/West line	County
---------------	---------	----------	-------	---------	---------------	------------------	---------------	----------------	--------

¹² Loe Code	¹³ Producing Method Code	¹⁴ Gas Connection Date	¹⁵ C-129 Permit Number	¹⁶ C-129 Effective Date	¹⁷ C-129 Expiration Date
------------------------	-------------------------------------	-----------------------------------	-----------------------------------	------------------------------------	-------------------------------------

III. Oil and Gas Transporters

¹⁸ Transporter OGRID	¹⁹ Transporter Name and Address	²⁰ POD	²¹ O/G	²² POD ULSTR Location and Description
009018	GIANT REFINING P O BOX 12999 SCOTTSDALE AZ 85267		O	RCVD JUN19'07 OIL CONS. DIV.
025244	WILLIAMS FIELD SERVICES P O BOX 645 TULSA OK 74102		G	DIST 3 RCVD JUN19'07

IV. Produced Water

²³ POD	²⁴ POD ULSTR Location and Description
-------------------	--

V. Well Completion Data

²⁵ Spud Date 04/30/07	²⁶ Ready Date 06/11/07	²⁷ TD 5978'	²⁸ PBTD	²⁹ Perforations 5042' - 5866'	³⁰ DHC, MC
³¹ Hole Size	³² Casing & Tubing Size	³³ Depth Set	³⁴ Sacks Cement		
12 1/4"	9 5/8", 36#, J-55	336'	250		
8 1/2"	7", 23#, J-55	3560'	550		
6 1/2"	4 1/2", 10.5#, J-55	5967'	200		
	2 1/2", 4.7#, J-55	5911'			

VI. Well Test Data

³⁵ Date New Oil	³⁶ Gas Delivery Date	³⁷ Test Date 06/11/07	³⁸ Test Length 1 hrs	³⁹ Tbg. Pressure 0	⁴⁰ Csg. Pressure 5.5
⁴¹ Choke Size 2"	⁴² Oil	⁴³ Water	⁴⁴ Gas 1500	⁴⁵ AOF	⁴⁶ Test Method Pilot

⁴⁷ I hereby certify that the rules of the Oil Conservation Division have been complied with and that the information given above is true and complete to the best of my knowledge and belief.

Signature: *Tracy Ross*

Printed name:
Tracy Ross

Title:
Sr. Production Analyst

E-mail Address:
Tracy.ross@williams.com

Date:
06/18/07

Phone:
918-573-6254

6/21/07 OIL CONSERVATION DIVISION

Approved by: *Henry Villanueva*
Title: Deputy Oil & Gas Inspector,
District #3

Approval Date: JUN 21 2007

Ben Apple

Impacted Well #2
39-26556

CRCL - looks mostly good

District I
PO Box 1980, Hobbs, NM 88241-1980

District II
PO Drawer 00, Artesia, NM 88211-0719

District III
1000 Rio Brazos Rd., Aztec, NM 87410

District IV
PO Box 2088, Santa Fe, NM 87504-2088

State of New Mexico
Energy, Minerals & Natural Resources Department

OIL CONSERVATION DIVISION
PO Box 2088
Santa Fe, NM 87504-2088

Form C
Revised February 21,
Instructions on
Submit to Appropriate District Office
State Lease - 4 Cc
Fee Lease - 3 Cc

AMENDED REPORT

WELL LOCATION AND ACREAGE DEDICATION PLAT

*API Number 30-039-26556		*Pool Code 72319	*Pool Name Blanco Mesaverde
*Property Code 17033	*Property Name ROSA UNIT		*Well Number 108
*GRID No. 120782	*Operator Name WILLIAMS PRODUCTION COMPANY		*Elevation 6338'

10 Surface Location

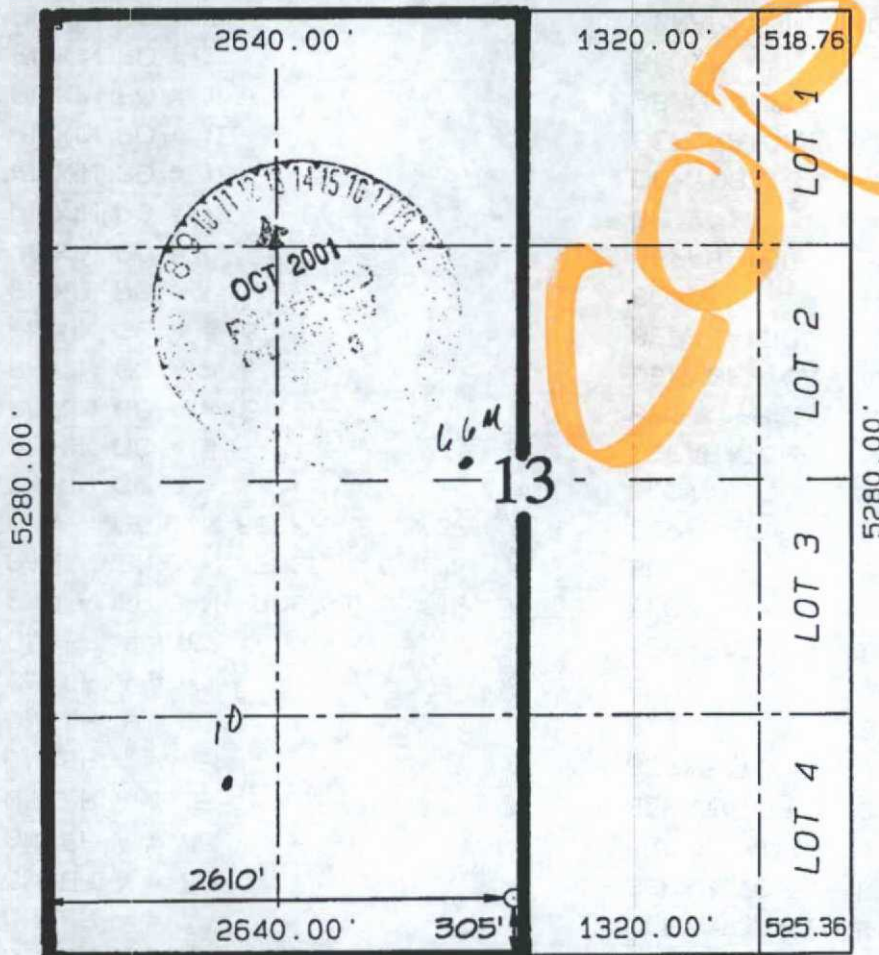
UL or lot no.	Section	Township	Range	Lot Idn	Feet from the	North/South line	Feet from the	East/West line	County
N	13	31N	6W		305	SOUTH	2610	WEST	RIO ARRIE

11 Bottom Hole Location If Different From Surface

UL or lot no.	Section	Township	Range	Lot Idn	Feet from the	North/South line	Feet from the	East/West line	County

*Dedicated Acres	*Joint or Infill	*Consolidation Code	*Order No.
320 - W/2	I	U	

NO ALLOWABLE WILL BE ASSIGNED TO THIS COMPLETION UNTIL ALL INTERESTS HAVE BEEN CONSOLIDATED OR A NON-STANDARD UNIT HAS BEEN APPROVED BY THE DIVISION



17 OPERATOR CERTIFICATION
I hereby certify that the information contained here is true and complete to the best of my knowledge and belief.

Steve Nelson
Signature

Steve Nelson
Printed Name
Agent, Nelson Consulting
Title

November 6, 2000
Date

18 SURVEYOR CERTIFICATION
I hereby certify that the well location shown on this was plotted from field notes of actual surveys made to or under my supervision and that the same is true and correct to the best of my belief.

OCTOBER 17, 2000
Date of Survey

Signature and Seal of Professional Surveyor

NEALE C. EDWARDS
NEW MEXICO
6857
Certificate Number 685

**ROSA UNIT #10B
BLANCO MESAVERDE**

Location:

305' FSL and 2610' FWL
SE/4 SW/4 Sec 13(N), T31N R06W
Rio Arriba, New Mexico

Elevation: 6338' GR
API # 30-039-26556

Spud date: 11/06/01

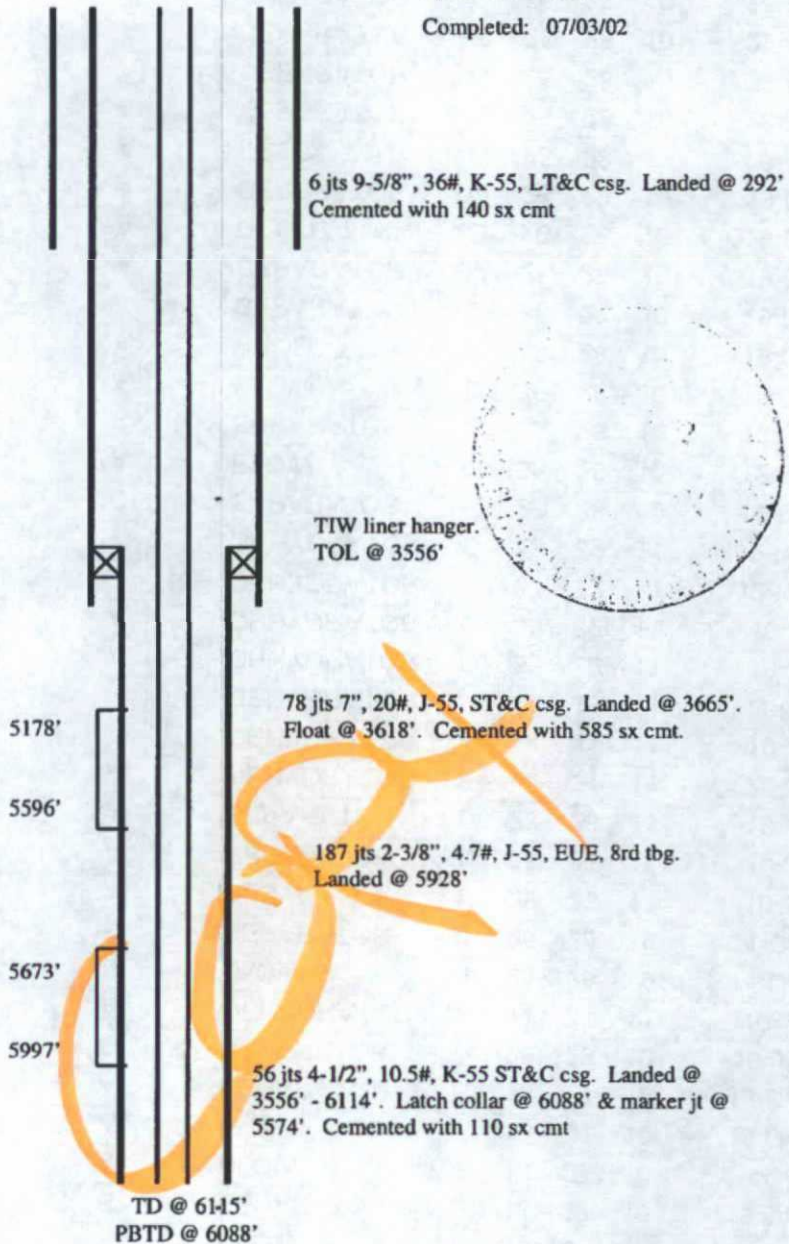
Completed: 07/03/02

<u>Top</u>	<u>Depth</u>
Pictured Cliffs	3188'
Lewis	3495'
CliffHouse	5402'
Menefee	5478'
Point Lookout	5670'

STIMULATION

CliffHouse/Menefee: 5178' - 5596'
(28, 0.38" holes) Frac with 72,000#
20/40 sand in 1800 bbls slick water.

Point Lookout: 5673' - 5997' (34,
0.38" holes) Frac with 60,000# 20/40
sand in 1900 bbls slick water.



Hole Size	Casing	Cement	Volume	Top of CMT
12-1/4"	9-5/8", 36#	140 sx	197 cu ft.	surface
8-3/4"	7", 20#	585 sx	1103 cu ft.	surface
6-1/4"	4-1/2", 10.5#	110 sx	217 cu ft.	3556'

TR 07/17/02

✓ m

District I
1625 N. French Dr., Hobbs, NM 88240
District II
1301 W. Grand Avenue, Artesia, NM 88210
District III
1000 Rio Brazos Rd., Aztec, NM 87410
District IV
1220 S. St. Francis Dr., Santa Fe, NM 87505

State of New Mexico
Energy, Minerals & Natural Resources

Form C-104
Reformatted July 20, 2001

Oil Conservation Division
1220 South St. Francis Dr.
Santa Fe, NM 87505

Submit to Appropriate District Office
5 Copies

☐ AMENDED REPORT

I. REQUEST FOR ALLOWABLE AND AUTHORIZATION TO TRANSPORT

¹ Operator name and Address WILLIAMS PRODUCTION COMPANY P O BOX 3102, MS 25-1 TULSA, OK 74101		² OGRID Number 120782
		³ Reason for Filing Code/ Effective Date NW
⁴ API Number 30 - 039-26556	⁵ Pool Name BLANCO MV	⁶ Pool Code 72319
⁷ Property Code 17033	⁸ Property Name ROSA UNIT	⁹ Well Number 10B

II. ¹⁰ Surface Location

UL or lot no. N	Section 13	Township 31N	Range 6W	Lot Idn	Feet from the 305	North/South Line SOUTH	Feet from the 2610	East/West line WEST	County RIO ARriba
--------------------	---------------	-----------------	-------------	---------	----------------------	---------------------------	-----------------------	------------------------	----------------------

¹¹ Bottom Hole Location

UL or lot no.	Section	Township	Range	Lot Idn	Feet from the	North/South line	Feet from the	East/West line	County
---------------	---------	----------	-------	---------	---------------	------------------	---------------	----------------	--------

¹² Lee Code	¹³ Producing Method Code	¹⁴ Gas Connection Date	¹⁵ C-129 Permit Number	¹⁶ C-129 Effective Date	¹⁷ C-129 Expiration Date
------------------------	-------------------------------------	-----------------------------------	-----------------------------------	------------------------------------	-------------------------------------

III. Oil and Gas Transporters

¹⁸ Transporter OGRID	¹⁹ Transporter Name and Address	²⁰ POD	²¹ O/G	²² POD ULSTR Location and Description
009018	GIANT REFINING P O BOX 12999 SCOTTSDALE, AZ 85267	2832478	O	
025244	WILLIAMS FIELD SERVICES ATTN: VAN JOHNSON P O BOX 645 TULSA, OK 74102	2832477	G	

IV. Produced Water

²³ POD 2832478	²⁴ POD ULSTR Location and Description
------------------------------	--

V. Well Completion Data

²⁵ Spud Date 11/06/01	²⁶ Ready Date 07/03/02	²⁷ TD 6115'	²⁸ PBD 6088'	²⁹ Perforations 5178' - 5997'	³⁰ DHC, MC
³¹ Hole Size	³² Casing & Tubing Size	³³ Depth Set	³⁴ Sacks Cement		
12-1/4"	9-5/8", 36#	292'	140		
8-3/4"	7", 20#	3665'	585		
6-1/4"	4-1/2", 10.5#	6114'	110		
	2-3/8", 4.7#	5928'			

VI. Well Test Data

³⁵ Date New Oil	³⁶ Gas Delivery Date	³⁷ Test Date 7/15/02	³⁸ Test Length 3 HRS	³⁹ Tbg. Pressure 275	⁴⁰ Csg. Pressure 700
⁴¹ Choke Size 3/2"	⁴² Oil 0	⁴³ Water 0	⁴⁴ Gas 453	⁴⁵ AOF	⁴⁶ Test Method PITOT

⁴⁷ I hereby certify that the rules of the Oil Conservation Division have been complied with and that the information given above is true and complete to the best of my knowledge and belief.

Signature: *Tracy Ross*

Printed name:
TRACY ROSS

Title:
PRODUCTION ANALYST

Date:
07/16/02

Phone:
918-573-6254

OIL CONSERVATION DIVISION

Approved by: *ORIGINAL SIGNATURE OF JAMES T. POPP*

Title: *DEPUTY DIR. & ASST. DIR. OF OIL*

Approval Date:
JUL 29 2002

District I
PO Box 1980, Hobbs, NM 88241-1980

District II
PO Drawer 00, Artesia, NM 88211-0719

District III
1000 Rio Brazos Rd., Aztec, NM 87410

District IV
PO Box 2088, Santa Fe, NM 87504-2088

State of New Mexico
Energy, Minerals & Natural Resources Department

OIL CONSERVATION DIVISION
PO Box 2088
Santa Fe, NM 87504-2088

Form C-102
Revised February 21, 1994
Instructions on back
Submit to Appropriate District Office
State Lease - 4 Copies
Fee Lease - 3 Copies

2005 MAR 15 AM 10:58 AMENDED REPORT

RECEIVED

CTO FARMINGTON NM

WELL LOCATION AND ACREAGE DEDICATION PLAT

*API Number 30-039-29843		*Pool Code 72319	*Pool Name BLANCO MESAVERDE
*Property Code 17033	*Property Name ROSA UNIT		*Well Number 125C
*GRID No. 120782	*Operator Name WILLIAMS PRODUCTION COMPANY		*Elevation 6349'

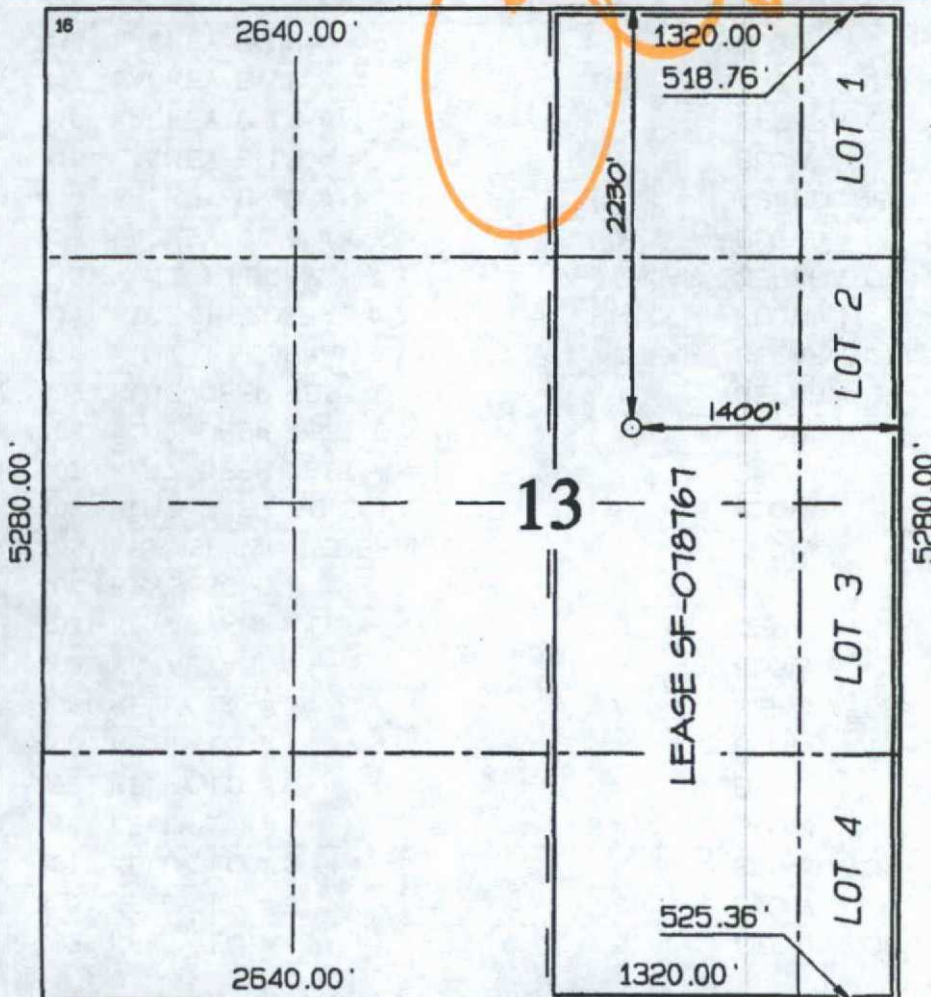
10 Surface Location

UL or lot no.	Section	Township	Range	Lot Idn	Feet from the	North/South line	Feet from the	East/West line	County
G	13	31N	6W		2230	NORTH	1400	EAST	RIO ARHIBA

11 Bottom Hole Location If Different From Surface

UL or lot no.	Section	Township	Range	Lot Idn	Feet from the	North/South line	Feet from the	East/West line	County	
Dedicated Acres 223.28 Acres - (E/2)					Joint or Infill		Consolidation Code		Order No. NSP 1838L	

NO ALLOWABLE WILL BE ASSIGNED TO THIS COMPLETION UNTIL ALL INTERESTS HAVE BEEN CONSOLIDATED
OR A NON-STANDARD UNIT HAS BEEN APPROVED BY THE DIVISION



17 OPERATOR CERTIFICATION

I hereby certify that the information contained herein is true and complete to the best of my knowledge and belief

Signature
Larry Higgins

Printed Name
LARRY HIGGINS

Title
DRILLING COPI

Date
3-13-06

18 SURVEYOR CERTIFICATION

I hereby certify that the well location shown on this plat was plotted from field notes of actual surveys made by me or under my supervision, and that the same is true and correct to the best of my belief.

Survey Date: OCTOBER 6, 2005

Signature and Seal of Professional Surveyor



Jason C. Edwards
Certificate Number 15269

**ROSA UNIT #125C
BLANCO MESAVERDE**

Spud date: 05/19/07
Completed: 08/02/07
1ST Delivery: 08/17/07

Location:
2230' FNL and 1400' FEL
SW/4 NE/4 Sec 13(G), T31N, R06W
Rio Arriba, New Mexico

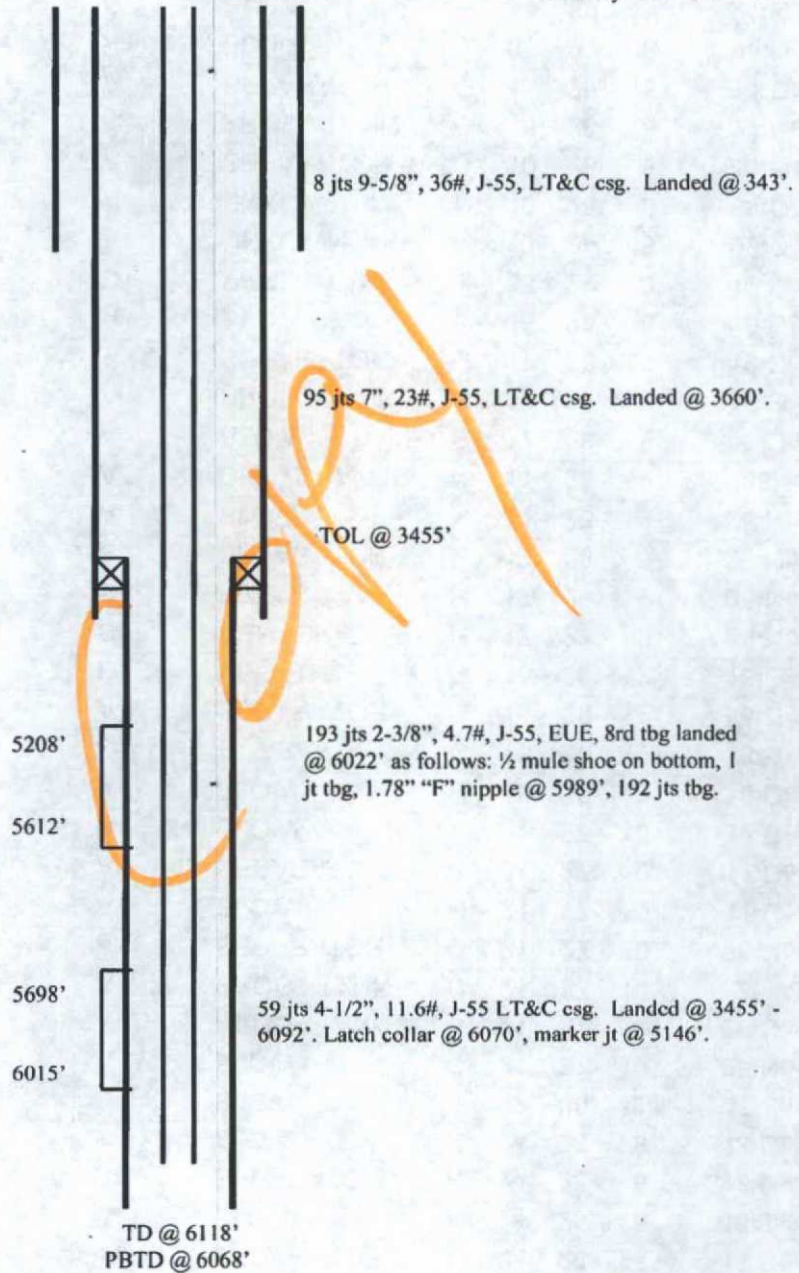
Elevation: 6349' GR, 6363' KB
API #: 30-039-29843

Top	Depth
Fruitland Coal	2902'
Pictured Cliffs	3220'
Lewis	3516'
Huerfanito Bentonite	4200'
CliffHouse	5429'
Menefee	5486'
Point Lookout	5688'

STIMULATION

CliffHouse/Menefee: 5208' - 5612' (67, 0.34" holes) Frac with 1601 bbls slickwater, 10,350# 14/30 Lite Prop, 85 bbls slickwater & 3030# 20/40 brown sand.

Point Lookout: 5698' - 6015' (55, 0.34" holes) Frac with 1721 bbls slickwater, 10,350# 14/30 Lite Prop, 69 bbls slickwater & 3030# 20/40 brown sand.



Hole Size	Casing	Cement	Volume	Top of CMT
12-1/4"	9-5/8", 36#	200 sxs	280 cu ft	surface
8-3/4"	7", 23#	550 sxs	1120 cu.ft	surface
6-1/4"	4-1/2", 11 6#	180 sxs	387 cu ft.	surface

District I
1625 N. French Dr., Hobbs, NM 88240
District II
1301 W. Grand Avenue, Artesia, NM 88210
District III
1000 Rio Brazos Rd., Aztec, NM 87410
District IV
1220 S. St. Francis Dr., Santa Fe, NM 87505

State of New Mexico
Energy, Minerals & Natural Resources

Form C-104
Revised June 10, 2003

Oil Conservation Division
1220 South St. Francis Dr.
Santa Fe, NM 87505

Submit to Appropriate District Office
5 Copies

☐ AMENDED REPORT

I. REQUEST FOR ALLOWABLE AND AUTHORIZATION TO TRANSPORT

¹ Operator name and Address WILLIAMS PRODUCTION COMPANY P O BOX 3102, MS 25-2 TULSA OK 74101		² OGRID Number 120782
		³ Reason for Filing Code/ Effective Date NW
⁴ API Number 30 - 039-29843	⁵ Pool Name BLANCO MESAVERDE W/2	⁶ Pool Code 72319
⁷ Property Code 17033	⁸ Property Name ROSA UNIT	⁹ Well Number 125C

II. ¹⁰ Surface Location

UL or lot no. G	Section 13	Township 31N	Range 6W	Lot.Idn	Feet from the 2230'	North/South Line NORTH	Feet from the 1400'	East/West line EAST	County Rio Arriba
--------------------	---------------	-----------------	-------------	---------	------------------------	---------------------------	------------------------	------------------------	----------------------

¹¹ Bottom Hole Location

UL or lot no.	Section	Township	Range	Lot Idn	Feet from the	North/South line	Feet from the	East/West line	County
¹² Lse Code	¹³ Producing Method Code	¹⁴ Gas Connection Date	¹⁵ C-129 Permit Number	¹⁶ C-129 Effective Date	¹⁷ C-129 Expiration Date				

III. Oil and Gas Transporters

¹⁸ Transporter OGRID	¹⁹ Transporter Name and Address	²⁰ POD	²¹ O/G	²² POD ULSTR Location and Description
009018	GIANT REFINING P O BOX 12999 SCOTTSDALE AZ 85267		O	RCVD AUG 24'07
025244	WILLIAMS FIELD SERVICES P O BOX 645 TULSA OK 74102		G	OIL CONS. DIV. DIST. 3

IV. Produced Water

²³ POD	²⁴ POD ULSTR Location and Description
-------------------	--

V. Well Completion Data

²⁵ Spud Date 05/19/07	²⁶ Ready Date 08/02/07	²⁷ TD 6118'	²⁸ PBDT 6068'	²⁹ Perforations 5208' - 6015'	³⁰ DHC, MC
³¹ Hole Size	³² Casing & Tubing Size	³³ Depth Set	³⁴ Sacks Cement		
12 1/2"	9 5/8", 36#, J-55	343'	200		
8 1/2"	7", 23#, J-55	3660'	550		
6 1/2"	4 1/4", 11.6#, J-55	6092'	180		
	2 3/4", 4.7#, J-55	6022'			

VI. Well Test Data

³⁵ Date New Oil	³⁶ Gas Delivery Date 08/17/07	³⁷ Test Date 08/02/07	³⁸ Test Length 1 hrs	³⁹ Tbg. Pressure 0	⁴⁰ Csg. Pressure 2.5
⁴¹ Choke Size 2"	⁴² Oil	⁴³ Water	⁴⁴ Gas 970	⁴⁵ AOF	⁴⁶ Test Method Pitot

⁴⁷ I hereby certify that the rules of the Oil Conservation Division have been complied with and that the information given above is true and complete to the best of my knowledge and belief.

Signature:

Tracy Ross

Printed name:

Tracy Ross

Title:

Sr. Production Analyst

E-mail Address:

Tracy.ross@williams.com

Date:

08/23/07

Phone:

918-573-6254

OIL CONSERVATION DIVISION

Approved by:

Charles Lewis 8.28.2007
Title: SUPERVISOR DISTRICT # 3

Approval Date:

AUG 28 2007

Brian Apple

8