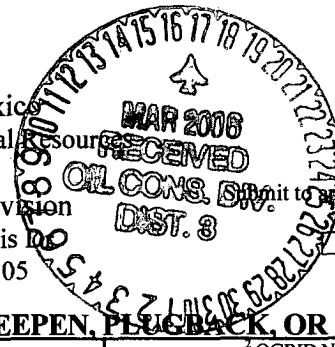


District I
1625 N. French Dr., Hobbs, NM 88240
District II
1301 W. Grand Avenue, Artesia, NM 88210
District III
1000 Rio Brazos Road, Aztec, NM 87410
District IV
1220 S. St. Francis Dr., Santa Fe, NM 87505

State of New Mexico
Energy Minerals and Natural Resources
Oil Conservation Division
1220 South St. Francis Dr.
Santa Fe, NM 87505

Form C-101
May 27, 2004



Submit to appropriate District Office
☐ AMENDED REPORT

APPLICATION FOR PERMIT TO DRILL, RE-ENTER, DEEPEN, PLUG BACK, OR ADD A ZONE

¹ Operator Name and Address BURLINGTON RESOURCES OIL & GAS COMANY LP		² OGRID Number 14538
		³ API Number 30-045-30922
⁴ Property Code -29064 35521	⁵ Property Name PRETTY LADY 30-11-34	⁶ Well No. #1
⁹ Proposed Pool 1 Basin Fruitland Coal		¹⁰ Proposed Pool 2

⁷ Surface Location

UL or lot no.	Section	Township	Range	Lot Idn	Feet from the	North/South line	Feet from the	East/West line	County
J	34	30N	11W		1760	South	1475	East	San Juan

⁸ Proposed Bottom Hole Location If Different From Surface

UL or lot no.	Section	Township	Range	Lot Idn	Feet from the	North/South line	Feet from the	East/West line	County

Additional Well Information

¹¹ Work Type Code E	¹² Well Type Code GAS	¹³ Cable/Rotary Rotary	¹⁴ Lease Type Code Private	¹⁵ Ground Level Elevation 5789'
¹⁶ Multiple N	¹⁷ Proposed Depth 12,551'	¹⁸ Formation Fruitland Coal	¹⁹ Contractor	²⁰ Spud Date
Depth to Groundwater greater than 100'		Distance from nearest fresh water well greater than 1000'		Distance from nearest surface water less than 1000'
Pit: Liner: Synthetic <input checked="" type="checkbox"/> 12 mils thick Clay <input type="checkbox"/> Pit Volume: 240 bbls Drilling Method:				
Closed-Loop System <input type="checkbox"/> Fresh Water <input type="checkbox"/> Brine <input type="checkbox"/> Diesel/Oil-based <input type="checkbox"/> Gas/Air <input type="checkbox"/>				

²¹ Proposed Casing and Cement Program

Hole Size	Casing Size	Casing weight/foot	Setting Depth	Sacks of Cement	Estimated TOC
17.5"	13.375"	48#	433'	382	circ to surface
12.25"	9.625"	47#, 53#	8125'	1495 / 1410	circ to surface
7.875"	none	none	12,551'		

²² Describe the proposed program. If this application is to DEEPEN or PLUG BACK, give the data on the present productive zone and proposed new productive zone. Describe the blowout prevention program, if any. Use additional sheets if necessary.

4/20/02 DV tool @ 3788'

See attached procedures and wellbore diagram.

²³ I hereby certify that the information given above is true and complete to the best of my knowledge and belief. I further certify that the drilling pit will be constructed according to NMOCD guidelines ☐, a general permit ☐, or an (attached) alternative OCD-approved plan ☒.

Printed name: **Joni Clark**
Title: **Sr. Regulatory Specialist**
E-mail Address: **jclark@br-inc.com**
Date: **3-16-06** Phone: **326-9701**

OIL CONSERVATION DIVISION

Approved by:
Title: **DEPUTY OIL & GAS INSPECTOR, DIST. 3**
Approval Date: **MAR 17 2006** Expiration Date: **MAR 17 2007**
Conditions of Approval Attached ☐

District I

1625 N. French Dr., Hobbs, NM 88240

District II

1301 W. Grand Ave., Artesia, NM 88210

District III

1000 Rio Brazos Rd., Aztec, NM 87410

District IV

1220 S. St Francis Dr., Santa Fe, NM 87505

State of New Mexico

Energy, Minerals and Natural Resources

Oil Conservation Division

1220 S. St Francis Dr.

Santa Fe, NM 87505

Form C-102

Permit 25401

WELL LOCATION AND ACREAGE DEDICATION PLAT

1. API Number 30-045-30922 ✓	2. Pool Code 71629 ✓	3. Pool Name BASIN FRUITLAND COAL (GAS) ✓
4. Property Code 35521	5. Property Name PRETTY LADY 30-11-34	6. Well No. 1
7. OGRID No. 14538	8. Operator Name BURLINGTON RESOURCES OIL & GAS COMPANY LP	9. Elevation 5789 per Joni to 5.3-17-06

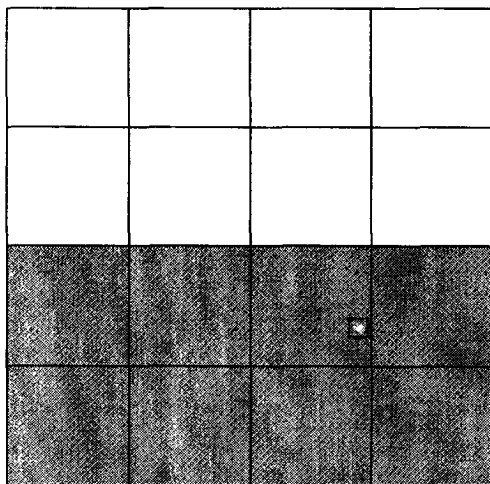
10. Surface Location

UL - Lot J	Section 34	Township 30N	Range 11W	Lot Idn	Feet From 1760	N/S Line S	Feet From 1475	E/W Line E	County SAN JUAN ✓
---------------	---------------	-----------------	--------------	---------	-------------------	---------------	-------------------	---------------	----------------------

11. Bottom Hole Location If Different From Surface

UL - Lot	Section	Township	Range	Lot Idn	Feet From	N/S Line	Feet From	E/W Line	County
12. Dedicated Acres 321.87		13. Joint or Infill		14. Consolidation Code		15. Order No.			

NO ALLOWABLE WILL BE ASSIGNED TO THIS COMPLETION UNTIL ALL INTERESTS HAVE BEEN CONSOLIDATED OR A NON-STANDARD UNIT HAS BEEN APPROVED BY THE DIVISION



OPERATOR CERTIFICATION

I hereby certify that the information contained herein is true and complete to the best of my knowledge and belief, and that this organization either owns a working interest or unleased mineral interest in the land including the proposed bottom hole location(s) or has a right to drill this well at this location pursuant to a contract with an owner of such a mineral or working interest, or to a voluntary pooling agreement or a compulsory pooling order heretofore entered by the division.

E-Signed By:

Title: Sr. Regulatory Specialist

Date: 3-14-06

SURVEYOR CERTIFICATION

I hereby certify that the well location shown on this plat was plotted from field notes of actual surveys made by me or under my supervision, and that the same is true and correct to the best of my belief.

Surveyed By: JASON EDWARDS

Date of Survey: 10/24/2001

Certificate Number: 15269

Pretty Lady 30-11 #34-1 Sundry Procedure

Unit J, Section 34, T30N, R11W

1. MIRU completion rig.
2. Cut off dry-hole marker. Stub-up cut-off casing and install new wellhead. NU BOPs.
3. TIH with 8-3/8" bit on 2-7/8" tubing. Drill out cement P&A plugs from surface to 433', 639' to 955' and 1,487' to 2,162'.
4. TIH and clean out to top of Mesaverde plug (but do not drill out) at approximately 3,665'. TOOH.
5. Pressure test casing to +/- 4000# for 15 minutes.
6. Perforate and fracture stimulate Fruitland Coal formation.
7. Flow back well. Clean out as required to PBTD @ approximately 3,665'.
8. Land 2-3/8" tubing. RDMO rig.
9. Return well to production as Fruitland Coal producer.

BURLINGTON RESOURCES

Pertinent Data Sheet Pretty Lady 30-11 #34-1

GENERAL INFORMATION:

LOCATION: 1760' FSL, 1475' FEL Unit J, Section 34, T30N, R11W San Juan County, NM	DATE: 3/13/2006 ELEVATION: GL: 5,789' KB: 5,828'
FIELD: FC	API: 30-045-30922
PBTD: Surface TD: 12,551' SPUD DATE: 3/24/02	LATITUDE: LONGITUDE: COMPLETION DATE: N/A

CASING RECORD:

HOLE SIZE	CSG SIZE	WEIGHT (#'s)	GRADE	DEPTH SET	STAGE	DVT	CMT TOP	CMT
17-1/2"	13-3/8"	48#	H-40	433'			circ to surf	382 sxs
12-1/4"	9-5/8"	53#	P-110	8125' (1st 3 jts)	1st		circ to surf	1495 sxs
		47#	P-110	Mid 151 jts	2nd	3,788'	circ to surf	1485 sxs
		53#	P-110	Top 29 jts				
8-1/2"	open hole			12,551'				

TUBING RECORD:

TBG SIZE	WEIGHT (#'s)	GRADE	# JTS	DEPTH SET	SN	BOTTOM HOLE ASSEMBLY
(Proposed)						
2-3/8"	4.7#	J-55		2,100'	2,099'	Exp chk, SN, 1jts, 2' pup jt, 2-3/8" 4.7# J55 EUE
(Current)						
None						

FORMATION TOPS:

Ojo Alamo	755'		Mesaverde	3764'		
Kirtland	899'		Dakota	6521'		
Fruitland	1793'		Entrada	7641'		
Pictured Cliffs	2102'		Rico	10468'		
Heur Bent.			Paradox	11432'		

*300 ft above Huerfano Bentonite is the legal top of Mesaverde in New Mexico (North of Chacra Line)

LOGGING RECORD:

Cased Hole Previously Run: Open Hole Previously run: Triple combo

STIMULATION (proposed):

Stage:	Perfs	Formation:	Sand Vol:	Fluid Vol	Rate:	Type:
(Proposed)						
1	TBD	Fruitland Coal	TBD	TBD	TBD	75Q foamed 25# linear gel
(Current)						

WORKOVER HISTORY:

May-02 P&A'd wellbore after drilling to TD.

CONTACT INFORMATION:

		OFFICE	CELL	PAGER	HOME	FAX
Production Engineer	Angela Ibara	326-9813	320-1070		326-9184	326-9563
Senior Rig Supervisor	John Angvick	326-9840	320-2420		632-9501	326-9563

Pretty Lady 30-11 #34-1

1760' FSL, 1475' FEL
Unit J, Section 34, T30N, R11W
San Juan County, NM

GL = 5,789'

KB = 5,828'

Current Wellbore Diagram

Surface Casing:

13-3/8" 48# H-40
Set @ 433' *400*
TOC @ circ to surf

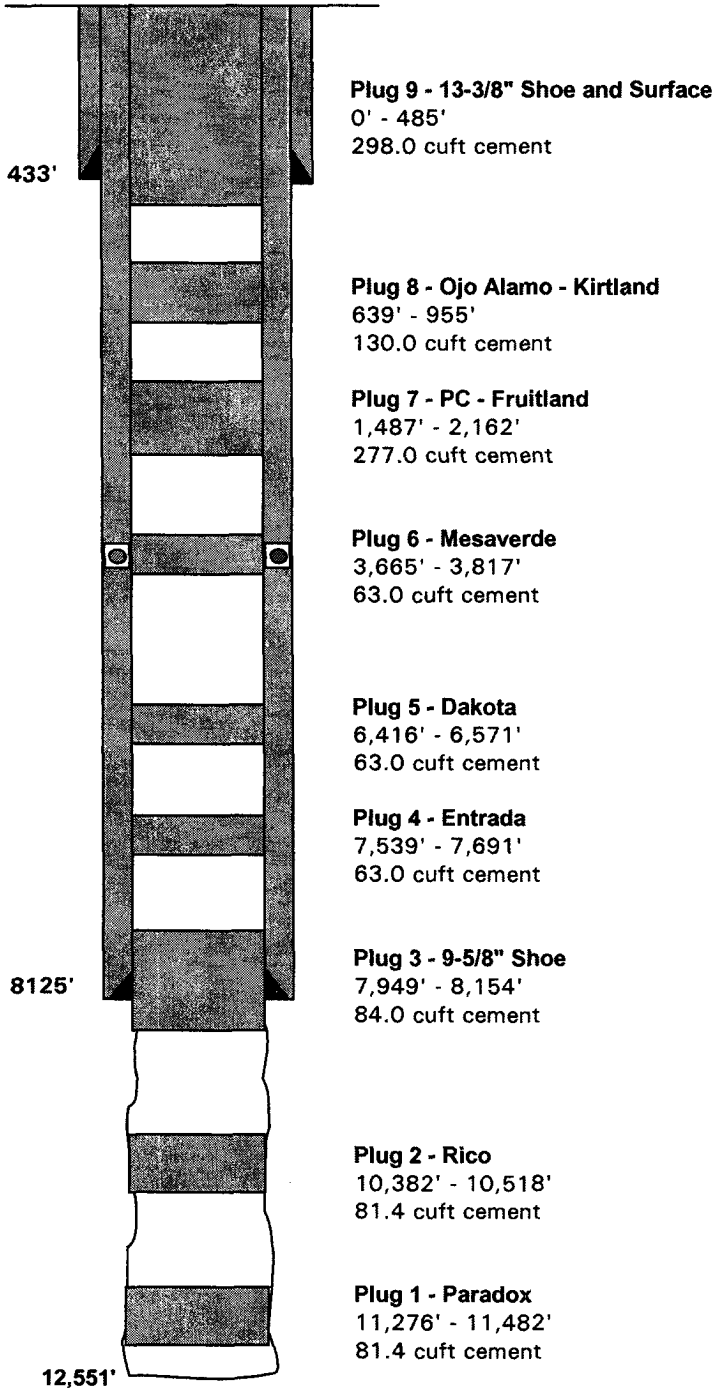
Ojo Alamo 755
Kirtland 899
Fruitland 1793
Pictured Cliffs 2102
Mesaverde 3764
Dakota 6521
Entrada 7641
Rico 10468
Paradox 11432

Intermediate Casing:

9-5/8" 53# P-110
Set @ 8125' (1st 3 jts)
9-5/8" 47# P-110
Set @ Mid 151 jts
9-5/8" 53# P-110
Set @ Top 29 jts
DVT @ 3,788'
1st stg circ to surf
2nd stg circ to surf

Open Hole Section:

8-1/2" TD @ 12,551'



PBTD = Surface
TD = 12,551'

ARI 03/13/06

Pretty Lady 30-11 #34-1

1760' FSL, 1475' FEL

Unit J, Section 34, T30N, R11W

San Juan County, NM

GL = 5,789'

KB = 5,828'

Proposed Wellbore Diagram

Surface Casing:

13-3/8" 48# H-40
Set @ 433'
TOC @ circ to surf

Production Tubing:

2-3/8" 4.7# J-55
Set @ 2,100'
SN @ 2,099'

Ojo Alamo 755
Kirtland 899
Fruitland 1793
Pictured Cliffs 2102
Mesaverde 3764
Dakota 6521
Entrada 7641
Rico 10468
Paradox 11432

Fruitland Coal

Perfs: TBD
Sand: TBD
Stim: 75Q foamed 25#
linear gel

Intermediate Casing:

9-5/8" 53# P-110
Set @ 8125' (1st 3 jts)
9-5/8" 47# P-110
Set @ Mid 151 jts
9-5/8" 53# P-110
Set @ Top 29 jts
DVT @ 3,788'
1st stg circ to surf
2nd stg circ to surf

Plug 6 - Mesaverde

3,665' - 3,817'
63.0 cuft cement

Plug 5 - Dakota

6,416' - 6,571'
63.0 cuft cement

Plug 4 - Entrada

7,539' - 7,691'
63.0 cuft cement

Plug 3 - 9-5/8" Shoe

7,949' - 8,154'
84.0 cuft cement

Plug 2 - Rico

10,382' - 10,518'
81.4 cuft cement

Plug 1 - Paradox

11,276' - 11,482'
81.4 cuft cement

Open Hole Section:

8-1/2" TD @ 12,551'

PBTD = Surface
TD = 12,551'

ARI 03/13/06