

# NE CHACO COM #902H CHACO UNIT NE HZ OIL (page 1)

Spud: 7/8/15

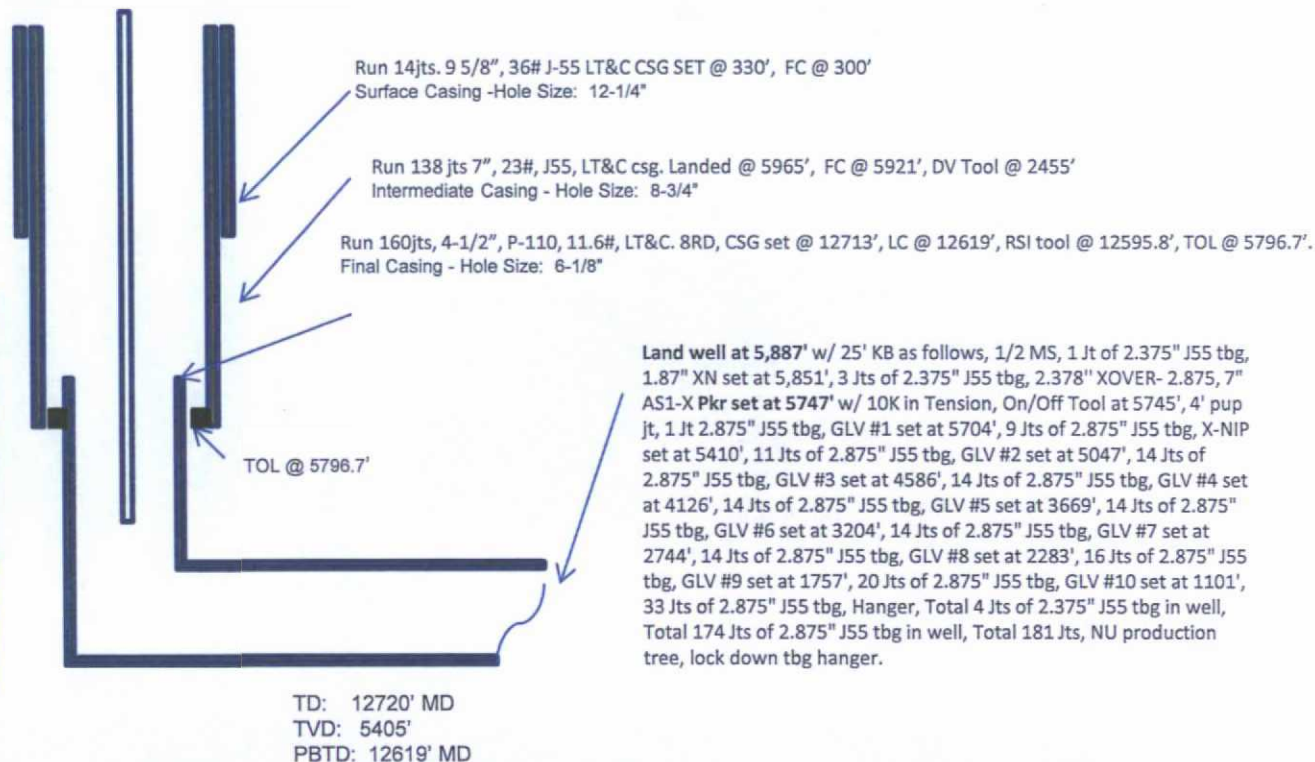
Completed: 1/23/16

SHL: 2403' FNL & 232' FWL  
SW/4 NW/4 Section 5 (E), T23N, R6W

BHL: 2286' FNL & 334' FEL  
SE/4 NE/4 Section 8 (H), T23N, R6W

RIO ARRIBA NM  
Elevation: 6882  
API: 30-039-31299

OJO ALAMO	1498	1483
KIRTLAND	1811	1790
PICTURE		
CLIFFS	2089	2061
LEWIS	2210	2180
CHACRA	2553	2515
CLIFF HOUSE	3687	3622
MENEFEE	3717	3651
PT LOOKOUT	4450	4368
MANCOS	4652	4566
GALLUP	5068	4975



HOLE SIZE	CASING	CEMENT	VOLUME	CMT TOP
12-1/4"	9-5/8"	101 sx	162.61 cu.ft.	Surface
8-3/4"	7"	845 sx	1414.7 cu.ft.	Surface
6-1/8"	4-1/2"	670 sx	856.6 cu.ft.	TOL 5796.7'

OIL CONS. DIV DIST. 3

FEB 03 2016

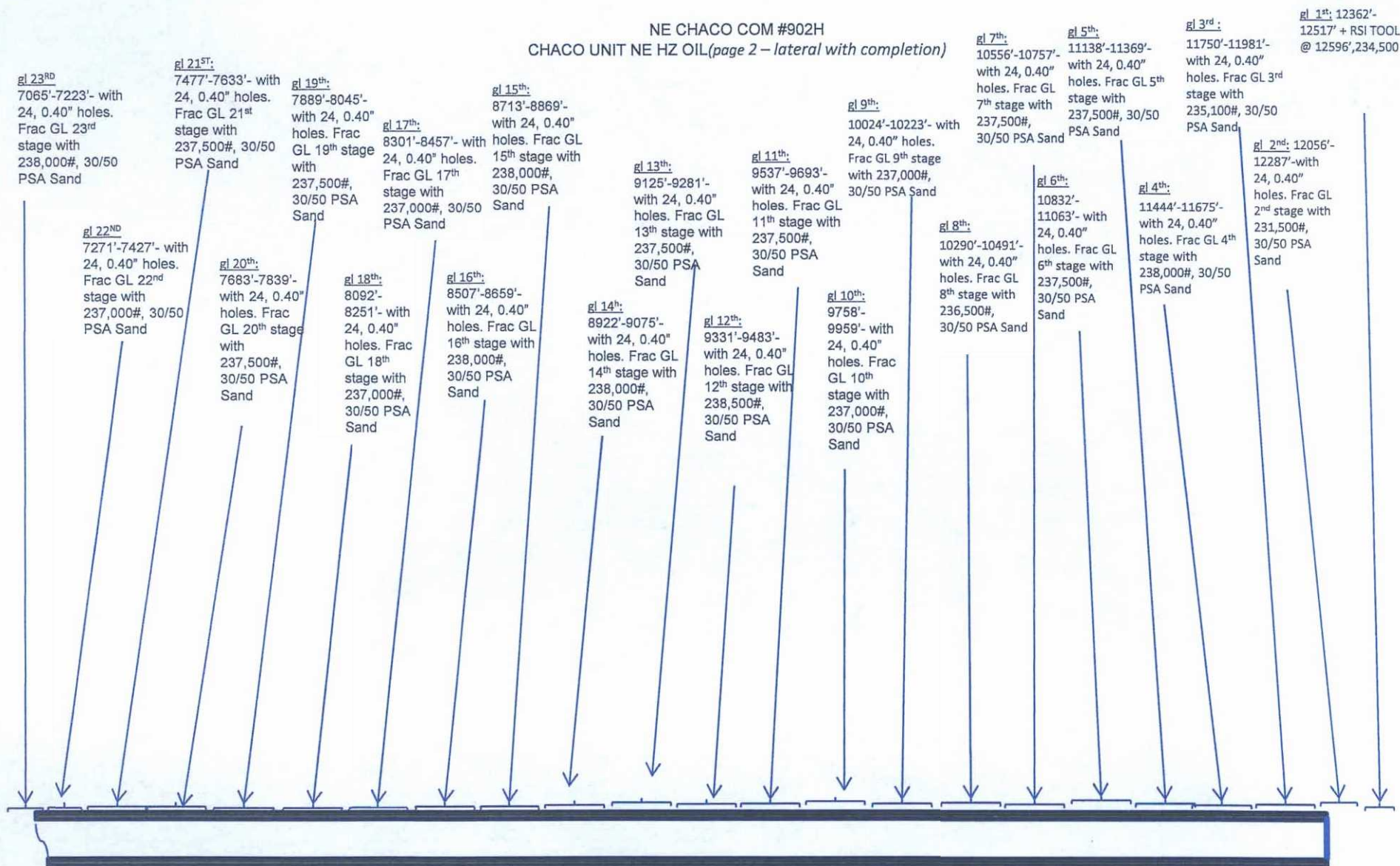
CONFIDENTIAL

LG 1/27/16

AV

3

NE CHACO COM #902H  
CHACO UNIT NE HZ OIL (page 2 – lateral with completion)



# NE CHACO COM #902H CHACO UNIT NE HZ OIL

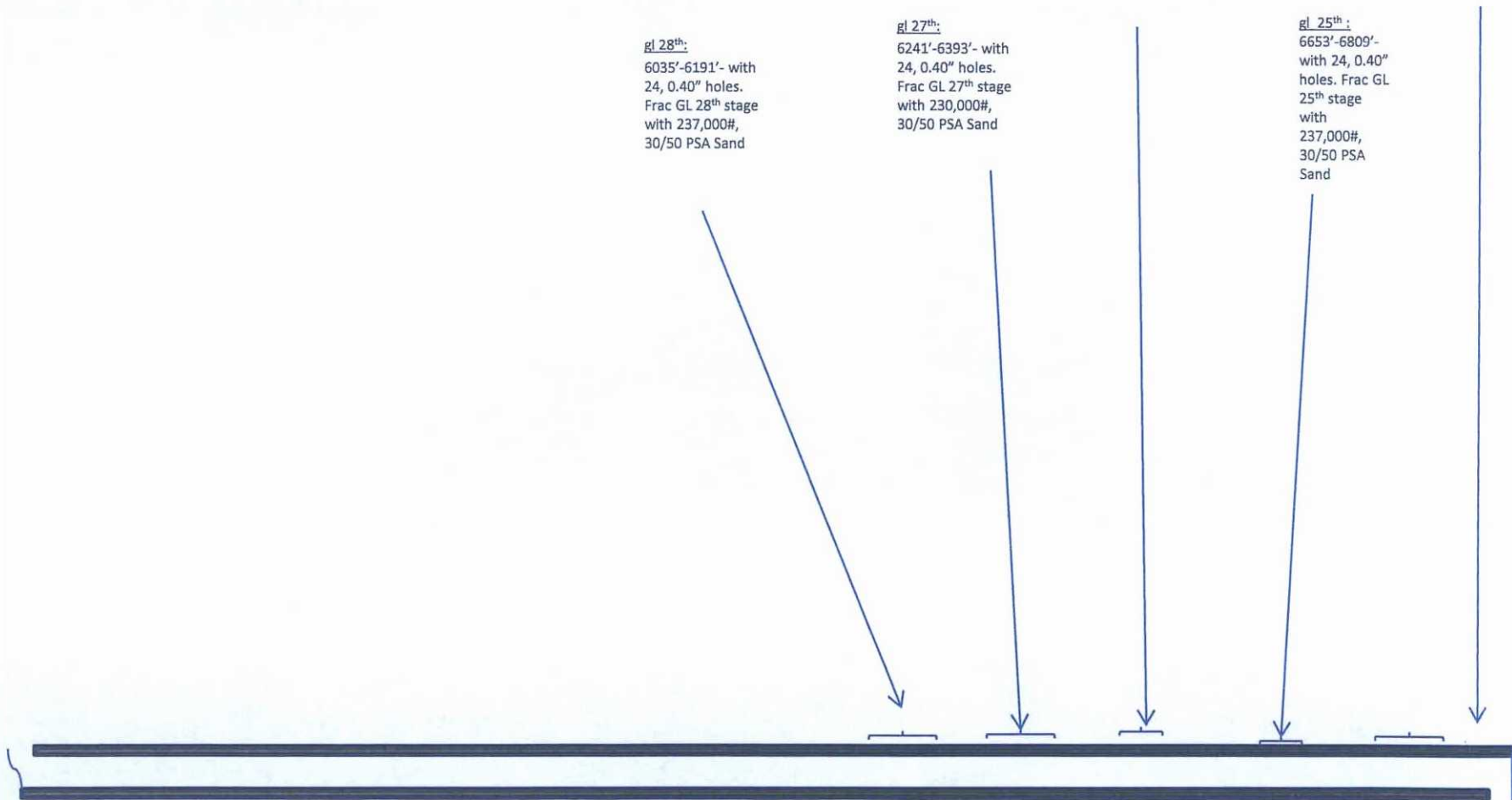
gl 26<sup>th</sup> :  
6447'-6603'- with  
24, 0.40" holes.  
Frac GL 26<sup>th</sup> stage  
with 237,500#,  
30/50 PSA Sand

gl 24<sup>th</sup> :  
6859'-7015'-  
with 24,  
0.40" holes.  
Frac GL 24<sup>th</sup>  
stage with  
237,000#,  
30/50 PSA  
Sand

gl 28<sup>th</sup> :  
6035'-6191'- with  
24, 0.40" holes.  
Frac GL 28<sup>th</sup> stage  
with 237,000#,  
30/50 PSA Sand

gl 27<sup>th</sup> :  
6241'-6393'- with  
24, 0.40" holes.  
Frac GL 27<sup>th</sup> stage  
with 230,000#,  
30/50 PSA Sand

gl 25<sup>th</sup> :  
6653'-6809'-  
with 24, 0.40"  
holes. Frac GL  
25<sup>th</sup> stage  
with  
237,000#,  
30/50 PSA  
Sand



See page 1 for upper portion of hole