

District I

State of New Mexico

Form C-101

PO Box 1980, Hobbs, NM 88241-1980

Energy, Minerals & Natural Resources Department

Revised October 18, 1994

District II

Instructions on back

811 South First, Artesia, NM 88210

OIL CONSERVATION DIVISION

Submit to Appropriate District Office

District III

2040 South Pacheco

State Lease - 6 Copies

1000 Rio Brazos Rd., Aztec, NM 87410

Santa Fe, NM 87505

Fee Lease - 5 Copies

District IV

2040 South Pacheco, Santa Fe, NM 87505

AMENDED REPORT

APPLICATION FOR PERMIT TO DRILL, RE-ENTER, DEEPEN, PLUG BACK, OR ADD A ZONE

¹ Operator Name and Address. Merrion Oil & Gas Corporation 610 Reilly Avenue Farmington, New Mexico 87401		² OGRID Number 014634
⁴ Property Code 7740		³ API Number 30-045-31763
⁵ Property Name Bartlesville		⁶ Well No. 1R

⁷ Surface Location

UL or lot no.	Section	Township	Range	Lot Idn	Feet from the	North/South line	Feet from the	East/West line	County
D	2	26N	13W		785'	North	685'	West	San Juan

⁸ Proposed Bottom Hole Location If Different From Surface

UL or lot no.	Section	Township	Range	Lot Idn	Feet from the	North/South line	Feet from the	East/West line	County
⁹ Proposed Pool 1 Basin Fruitland WAW Fruitland Sand/PC					¹⁰ Proposed Pool 2				

¹¹ Work Type Code N	¹² Well Type Code G	¹³ Cable/Rotary Rotary	¹⁴ Lease Type Code S	¹⁵ Ground Level Elevation 6054'
¹⁶ Multiple No	¹⁷ Proposed Depth 1400' KB	¹⁸ Formation WAW Fruitland/PC	¹⁹ Contractor L&B Speed Drill	²⁰ Spud Date As Soon As Permitted

²¹ Proposed Casing and Cement Program

Hole Size	Casing Size	Casing weight/foot	Setting Depth	Sacks of Cement	Estimated TOC
8-3/4"	7" J55	20 ppf or greater	~120' KB	~30 sx (35 cuft)	Surface
6-1/4"	4-1/2" J55	10.5 ppf or greater	~1400'KB	~109 sx (167 cuft)	Surface

²² Describe the proposed program. If this application is to DEEPEN or PLUG BACK give the data on the present productive zone and proposed new productive zone. Describe the blowout prevention program, if any. Use additional sheets if necessary.

Merrion Oil & Gas proposes to drill 8³/₄" hole with native mud to approx. 120' KB and set 7" 20# J55 or greater surface casing, cement to surface with ~30 sx 'B' w/ 2% CaCl₂ (35 ft³). Will drill 6¹/₄" hole to TD @ approx. 1400' KB with low solids non-dispersed gel mud system. Run open hole surveys. Set 4¹/₂", 10.5# J55 or greater production casing, cement with 44 sx 'B' w/ extender (91 ft³), tail in with 65 sx (76 ft³) Class B Top of cement should circulate to surface (will adjust volumes based upon caliper log). If cement does not reach surface, a temperature log or cement bond log will be run to determine top of cement.

Will test WAW Fruitland/Pictured Cliffs through perforated casing. Will fracture stimulate and put on for production test.

Drilling operations below surface casing will be conducted with a Bag type BOP in place, minimum working pressure 1000 psig.

Formation tops: Ojo Alamo - surface, Kirtland - 75', Fruitland - 808', Main Coal - 1210', Pictured Cliffs - 1240'.

²³ I hereby certify that the information given above is true and complete to the best of my knowledge and belief.

Signature:

Printed name:

Connie S. Dinning

Title:

Production Engineer

Date: July 1, 2003

Phone: 505-327-9801

OIL CONSERVATION DIVISION

Approved by:

Title:

DEPUTY OIL & GAS INSPECTOR, DIST. 3

Approval Date:

JUL - 3 2003

Expiration Date:

JUL - 3 2004

Conditions of Approval:

Attached ☐

HOLD C164 FOR Status Change - Bartlesville #1

State of New Mexico
Energy, Minerals & Mining Resources Department
OIL CONSERVATION DIVISION
2040 South Pacheco
Santa Fe, NM 87505

Form C - 102

☐ AMENDED REPORT

WELL LOCATION AND ACREAGE DEDICATION PLAT

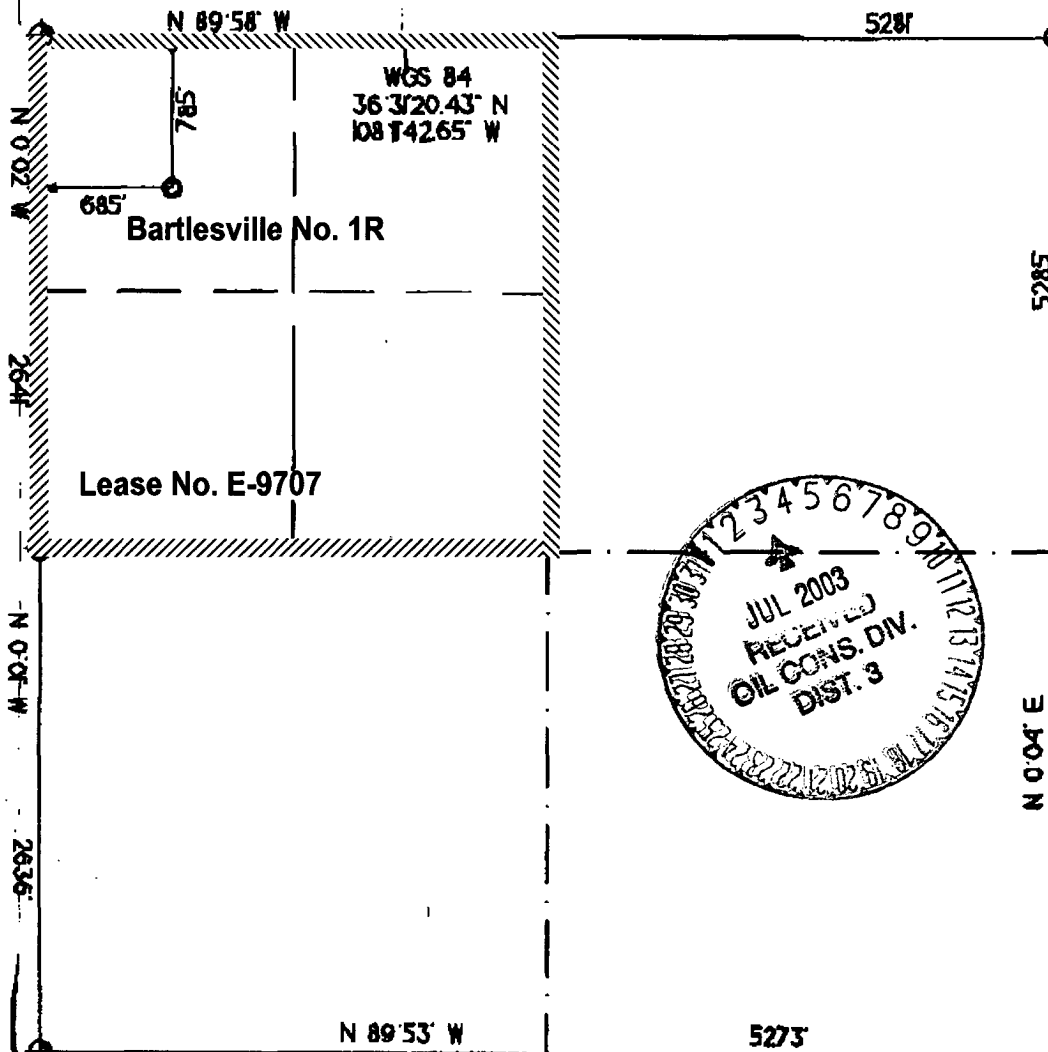
APA Number 30045-31763	Pool Code	Pool Name WAW Fruitland/Pictured Cliffs
Property Code 7740	Property Name BARTLESVILLE	Well Number 1 R
OGPD No. 014634	Operator Name MERRION OIL & GAS	Elevation 6054'

Surface Location									
UL of Lot	Sec.	Twp.	Rgn.	Lot Id.	Feet from	North/South	Feet from	East/West	County
D	2	26 N.	13 W.	nwnw	785'	NORTH	685'	WEST	SAN JUAN

Bottom Hole Location if Different From Surface									
UL of Lot	Sec.	Twp.	Rgn.	Lot Id.	Feet from	North/South	Feet from	East/West	County

Dedication 100	Joint ?	Consolidation	Order No.
--------------------------	---------	---------------	-----------

159.94 NO ALLOWABLE WILL ASSIGNED TO THIS COMPLETION UNTIL ALL INTERESTS HAVE BEEN CONSOLIDATED
OR A NON-STANDARD UNIT HAS BEEN APPROVED BY THE DIVISION



OPERATOR CERTIFICATION	
I hereby certify that the information contained herein is true and complete to the best of my knowledge and belief.	
Signature	<i>[Signature]</i>
Printed Name	Connie S. Dinning
Title	Production Engineer
Date	July 1, 2003
SURVEYOR CERTIFICATION	
I hereby certify that the well location on this plat was plotted from field notes of actual surveys made by me or under my supervision, and that the same is true and correct to the best of my belief.	
Date of Survey	
Signature	<i>[Signature]</i>
Professional Surveyor	6844
REGISTERED LAND SURVEYOR	

Merrion Oil & Gas Corporation Wellbore Schematic

Bartlesville No. 1R

Proposed Wellbore Configuration

Location: 785' fml & 685' fwl (nw nw)
Sec 2, T26N, R13W, NMPM
San Juan County, New Mexico

Date: July 1, 2003

Elevation: 6054' GL
6059' RKB

Prepared by: Connie S. Dinning

Cretaceous

Ojo Alamo - Surface

Kirtland - 75'

Fruitland - 808'

Fruitland Coal - 1210'

Pictured Cliffs - 1240'

Top of Cmt @ Surface

Surface Bit Size - 8 3/4"

7", 23# Surface @ 120' KB w/ 30 sx (35 cf) Class B, circ to surface

Bit Size 6-1/4"

2-3/8" IJ 2.76# J55 Prod Tubing @ 1275' KB

Pictured Cliffs Perforations: 1240' - 1260', 3 spf, total 60 holes

4 1/2", 10.5# Production Csg @ 1400' w/ 44 sx (91 cuft) Class B w/
extender, tail in w/ 65sx (76cf) Class B neat

PBTD @ 1360' KB?

TD @ 1400' KB