

District I  
PO Box 1980, Hobbs, NM 88241-1980  
District II  
811 S. 1st Street, Artesia, NM 88210-2834  
District III  
1000 Rio Brazos Rd., Aztec, NM 87410  
District IV  
2040 South Pacheco, Santa Fe, NM 87505

State of New Mexico  
Energy, Minerals & Natural Resources Department

OIL CONSERVATION DIVISION  
2040 South Pacheco  
Santa Fe, NM 87505

Form C-101  
Revised October 18, 1999  
Instructions on back  
Submit to Appropriate District Office  
State Lease - 6 Copies  
Fee Lease - 5 Copies

☐ AMENDED REPORT

APPLICATION FOR PERMIT TO DRILL, RE-ENTER, DEEPEN, PLUG BACK, OR ADD A ZONE

<sup>1</sup> Operator name and Address XTO Energy Inc. 2700 Farmington Ave., Bldg. K. Ste 1 Farmington, NM 87401		<sup>2</sup> OGRID Number 167067
<sup>4</sup> Property Code 22804	<sup>5</sup> Property Name Quine Gas Com	<sup>3</sup> API Number 30-0 45-3770
		<sup>6</sup> Well No. #3

<sup>7</sup> Surface Location									
UL or lot no.	Section	Township	Range	Lot. Idn	Feet from the	North/South Line	Feet from the	East/West line	County
I	31	30N	12W		2,055'	south	1,115'	East	San Juan

<sup>8</sup> Proposed Bottom Hole Location If Different From Surface

UL or lot no.	Section	Township	Range	Lot. Idn	Feet from the	North/South Line	Feet from the	East/West line	County
<sup>9</sup> Proposed Pool 1 Basin Fruitland Coal					<sup>10</sup> Proposed Pool 2				

<sup>11</sup> Work Type Code N	<sup>12</sup> Well Type Code G	<sup>13</sup> Cable/Rotary Rotary	<sup>14</sup> Lease Type Code Fee	<sup>15</sup> Ground Level Elevation 5,420' Ground Level
<sup>16</sup> Multiple N	<sup>17</sup> Proposed Depth 1,625'	<sup>18</sup> Formation Fruitland Coal	<sup>19</sup> Contractor Stewart Bros.	<sup>20</sup> Spud Date Fall, 2003

<sup>21</sup> Proposed Casing and Cement Program

Hole Size	Casing Size	Casing weight/foot	Setting Depth	Sacks of Cement	Estimated TOC
8-3/4"	7"	20.0#, J-55, STC	220'	100 sx	Surface
6-1/4"	4-1/2"	10.5#, J-55, STC	1,625'	175 sx	Surface

<sup>22</sup> Describe the proposed program. If this application is to DEEPEN or PLUG BACK give the data on the present productive zone and proposed new productive zone.  
Describe the blowout prevention program, if any. Use additional sheets if necessary.

Surface: 100 sx of Type III cement w/2% CC & 1/4#/sx cello (14.8 ppg, 1.39 cuft). Circ to surface.

Production: 100 sx Type III w/8% gel & 1/4#/sx cello (11.4 ppg & 3.03 cuft/sx) followed by 75 sx Type III cmt w/1% CC & 1/4#/sx cello (14.5 ppg & 1.41 cuft/sx). Circ cement to surface.

Remarks: Use 40% excess over volume calculated from open hole logs to determine final cement volume.

BOP diagram is attached.

<sup>23</sup> I hereby certify that the information given above is true and complete to the best of my knowledge and belief.

Signature:

Printed name: Jeffrey W. Patton

Title: Drilling Engineer

OIL CONSERVATION DIVISION

Approved by:

Title: DEPUTY OIL & GAS INSPECTOR, DIST. 3

Approval Date:

Expiration Date:

JUL - 9 2003

JUL - 9 2003

DISTRICT I  
1625 N. French Dr., Hobbs, N.M. 88240

State of New Mexico  
Energy, Minerals & Natural Resources Department

Form C-102  
Revised August 15, 2000

DISTRICT II  
811 South First, Artesia, N.M. 88210

DISTRICT III  
1000 Rio Brazos Rd., Aztec, N.M. 87410

DISTRICT IV  
2040 South Pacheco, Santa Fe, NM 87505

OIL CONSERVATION DIVISION

2040 South Pacheco  
Santa Fe, NM 87505

Submit to Appropriate District Office  
State Lease - 4 Copies  
Fee Lease - 3 Copies

☐ AMENDED REPORT

WELL LOCATION AND ACREAGE DEDICATION PLAT

<sup>1</sup> API Number 30-045-31770	<sup>2</sup> Pool Code 711029	<sup>3</sup> Pool Name Basin Fruitland Coal
<sup>4</sup> Property Code 22804	<sup>5</sup> Property Name QUINE GAS COM	<sup>6</sup> Well Number 3
<sup>7</sup> GRID No. 167067	<sup>8</sup> Operator Name XTO ENERGY INC.	<sup>9</sup> Elevation 5420'

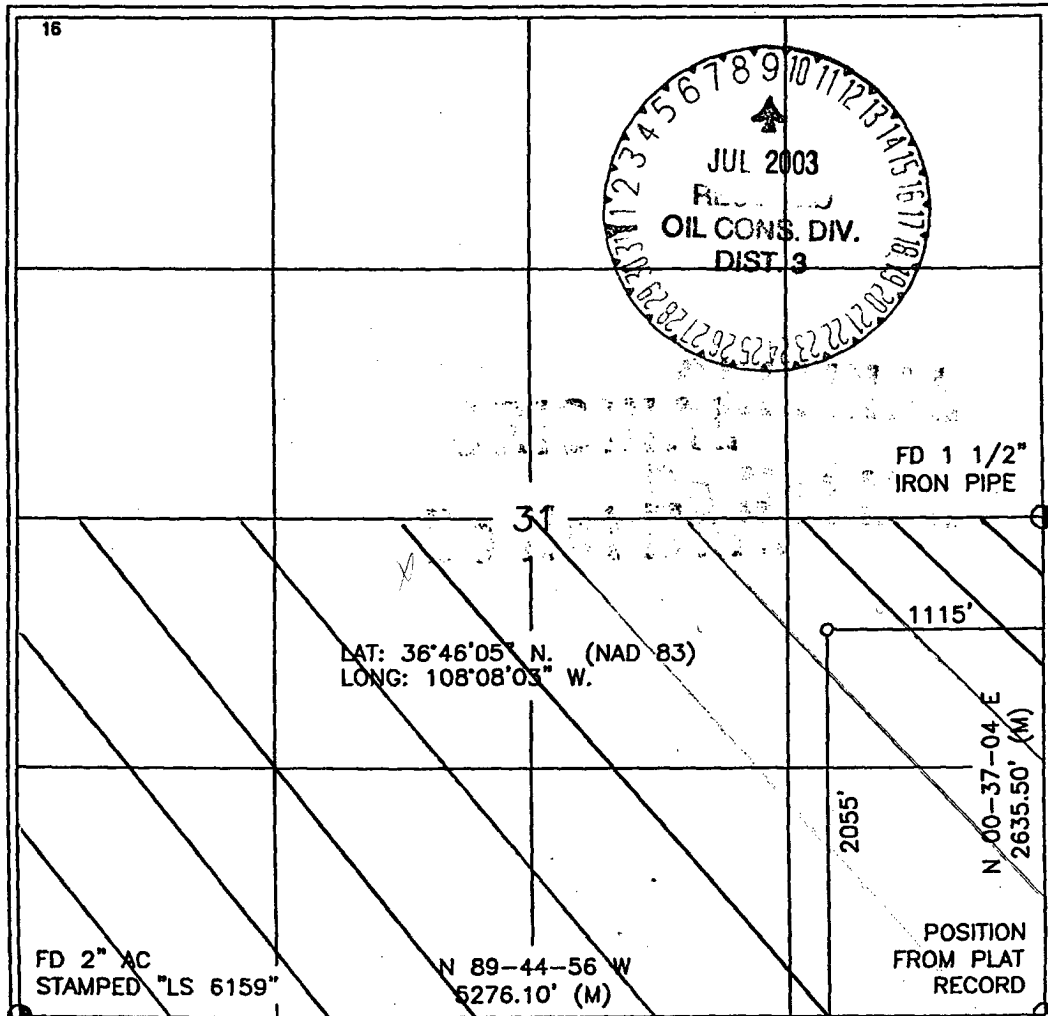
<sup>10</sup> Surface Location

UL or lot no.	Section	Township	Range	Lot Idn	Feet from the	North/South line	Feet from the	East/West line	County
1	31	30-N	12-W		2055'	SOUTH	1115'	EAST	SAN JUAN

<sup>11</sup> Bottom Hole Location If Different From Surface

UL or lot no.	Section	Township	Range	Lot Idn	Feet from the	North/South line	Feet from the	East/West line	County
<sup>12</sup> Dedicated Acres 317.38 S12		<sup>13</sup> Joint or Infill I		<sup>14</sup> Consolidation Code		<sup>15</sup> Order No.			

NO ALLOWABLE WILL BE ASSIGNED TO THIS COMPLETION UNTIL ALL INTERESTS HAVE BEEN CONSOLIDATED  
OR A NON-STANDARD UNIT HAS BEEN APPROVED BY THE DIVISION



17 OPERATOR CERTIFICATION

I hereby certify that the information contained herein is true and complete to the best of my knowledge and belief

*Kelly K Small*  
Signature  
Kelly K Small  
Printed Name  
Drilling Assistant  
Title  
5/21/03  
Date

18 SURVEYOR CERTIFICATION

I hereby certify that the well location shown on this plat was plotted from field notes of actual surveys made by me or under my supervision, and that the same is true and correct to the best of my belief

*DAVID A. JOHNSON*  
Signature  
DAVID A. JOHNSON  
Printed Name  
REGISTERED PROFESSIONAL SURVEYOR  
Title  
14827  
Certificate Number

# BOP SCHEMATIC FOR DRILLING OPERATIONS CLASS 1 (2M) NORMAL PRESSURE

## 1. Test BOP after installation:

Pressure test BOP to 200-300  
psig (low pressure) for 5 min.

Test BOP to Working Press or  
to 70% internal yield of surf csg  
(10 min).

## 2. Test operation of (both) rams on every trip.

## 3. Check and record Accumulator pressure on every tour.

## 4. Re-pressure test BOP stack after changing out rams.

## 5. Have kelly cock valve with handle available.

## 6. Have safety valve and subs to fit all sizes of drill string.

# TESTING PROCEDURE

