

UNITED STATES
DEPARTMENT OF THE INTERIOR
BUREAU OF LAND MANAGEMENT

Sundry Notices and Reports on Wells

1. Type of Well
GAS

2. Name of Operator

**BURLINGTON
RESOURCES**

OIL & GAS COMPANY

3. Address & Phone No. of Operator

PO Box 4289, Farmington, NM 87499 (505) 326-9700

4. Location of Well, Footage, Sec., T, R, M

970' FNL, 1660' FEL, Sec. 26, T-27-N, R-9-W, NMMPM

5. Lease Number
NMSF078356A

6. If Indian, All. or
Tribe Name

7. Unit Agreement Name

Huerfanito Unit

8. Well Name & Number
Huerfanito Unit 94R

9. API Well No.
30-045-30845

10. Field and Pool
Blanco PC South

11. County and State
San Juan Co, NM

12. CHECK APPROPRIATE BOX TO INDICATE NATURE OF NOTICE, REPORT, OTHER DATA

Type of Submission

Type of Action

<input checked="" type="checkbox"/> Notice of Intent	<input type="checkbox"/> Abandonment	<input checked="" type="checkbox"/> Change of Plans
<input type="checkbox"/> Subsequent Report	<input type="checkbox"/> Recompletion	<input type="checkbox"/> New Construction
<input type="checkbox"/> Final Abandonment	<input type="checkbox"/> Plugging Back	<input type="checkbox"/> Non-Routine Fracturing
	<input type="checkbox"/> Casing Repair	<input type="checkbox"/> Water Shut off
	<input checked="" type="checkbox"/> Altering Casing	<input type="checkbox"/> Conversion to Injection
	<input type="checkbox"/> Other -	

13. Describe Proposed or Completed Operations

It is intended to change the approved casing and cementing procedure for the subject well. Attached is a new operations plan.



070 Farmington, NM
JUN 24 PM 12:27

RECEIVED

14. I hereby certify that the foregoing is true and correct.

Signed Reggie Cole Title Regulatory Supervisor Date 06/23/03

FSB

(This space for Federal or State Office use)

APPROVED BY Jim Lovato

Title

Date

JUN 26 2003

CONDITION OF APPROVAL, if any:

Title 18 U.S.C. Section 1001, makes it a crime for any person knowingly and willfully to make to any department or agency of the United States any false, fictitious or fraudulent statements or representations as to any matter within its jurisdiction.

NMOCD

OPERATIONS PLAN

Well Name: Huerfanito Unit 94R
Location: 970' FNL, 1660' FEL Section 26, T-27-N, R-9-W
San Juan County, New Mexico
Latitude 36° 33.0, Longitude 107° 45.2

Formation: Blanco PC South

Elevation: 6198' GR

Formation:	Top	Bottom	Contents
Surface	San Jose	1235'	
Ojo Alamo	1235'	1364'	aquifer
Kirtland	1364'	1737'	
Fruitland	1737'	2123'	gas
Pictured Cliffs	2123'		gas
Total Depth	2323'		

Logging Program: cased hole - CBL/GR/CCl TD to surface

Coring Program: none

Mud Program:

<u>Interval</u>	<u>Type</u>	<u>Weight</u>	<u>Vis.</u>	<u>Fluid Loss</u>
0 - 120'	Spud	8.4-9.0	40-50	no control
120-2323'	FW	8.4-9.0	40-60	no control

Casing Program (as listed, equivalent, or better):

<u>Hole Size</u>	<u>Depth Interval</u>	<u>Csg. Size</u>	<u>Wt.</u>	<u>Grade</u>
8 3/4"	0 - 120'	7"	20.0#	J-55
6 1/4"	0 - 2323'	4 1/2"	10.5#	J-55

Tubing Program: - 0' 0 2323' 2 3/8" 4.70# J-55

Float Equipment: 7" surface casing - saw tooth guide shoe.
Centralizers will be run in accordance with Onshore Order #2.

4 1/2" production casing - float shoe on bottom. Standard centralizers run every other joint above shoe to the base of the Ojo Alamo @ 1364'. Two turbolizing type centralizers - one below and one into the base of the Ojo Alamo @ 1364. Standard centralizers thereafter every fourth joint up to the base of the surface pipe.

Wellhead Equipment: 7" x 4 1/2" x 2 3/8" 2000 psi screw on independent wellhead.

Cementing:

7" surface casing - cement with 26 sx Type I, II cement with 20% fly ash (41 cu.ft. of slurry to bring cement to surface) or equivalent. Wait on cement for 24 hours for pre-set holes or 8 hrs for conventionally set holes before pressure testing or drilling out from under surface. Test casing to 600 psi for 30 minutes. This well has already been pre-set.

Huerfanito Unit 94R

4 1/2" production casing - Lead w/161 sx Premium Lite cement w/3% calcium chloride, 0.25 pps Flocele, 5 pps LCM-1, 0.4% fluid loss, 0.4% sodium metasilicate. Tail w/90 sx Type III cement w/1% calcium chloride, 0.25 pps Flocele, and 0.2% fluid loss (468 cu. ft. of slurry, 100% excess to circulate to surface).

Note: If open hole logs are run, cement volumes will be based on 25% excess over caliper volumes.

BOP and tests:

Surface to TD - 7 1/16" 3000 psi single spherical annular preventer (Reference attached Figure). Prior to drilling out surface casing, test BOP and casing to 400 psi/30 min.

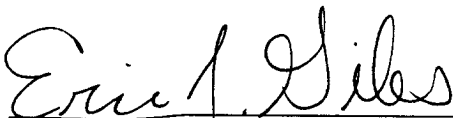
Completion - 6" 2000 psi (minimum) double gate BOP stack (Reference Figure #2). Prior to completion operations, test BOP and casing to 2000 psi/15 min..

From surface to TD - choke manifold (Reference Attached Figure).

Pipe rams will be actuated at least once each day and blind rams actuated once each trip to test proper functioning. An upper kelly cock valve with handle and drill string safety valves to fit each drill string will be maintained and available on the rig floor.

Additional information:

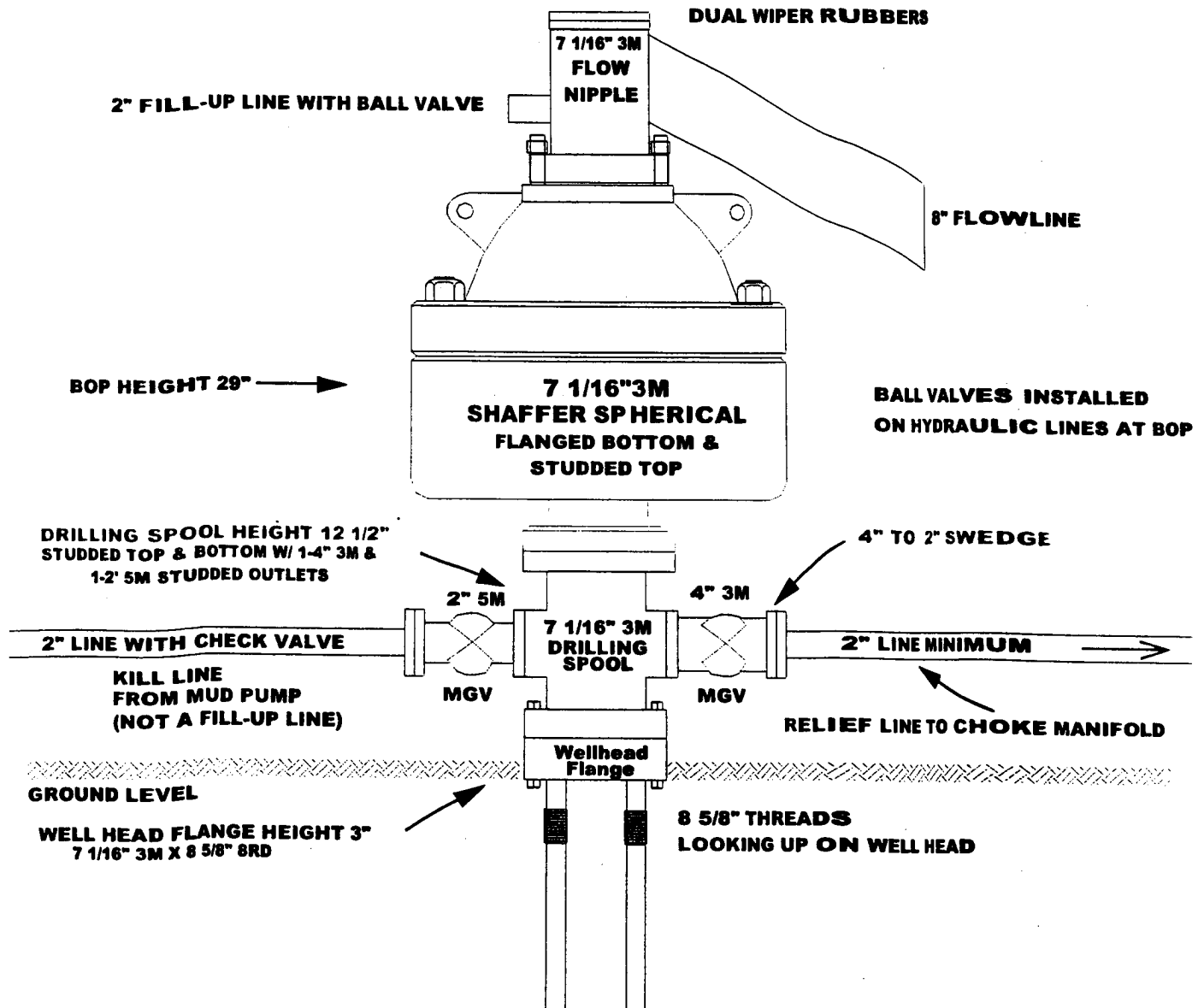
- * The Pictured Cliffs formation will be completed.
- * Anticipated pore pressure for the Pictured Cliffs is 500 psi.
- * This gas is dedicated.
- * The northwest quarter of Section 26 is dedicated to the Pictured Cliffs.


Drilling Engineer

6/23/03
Date

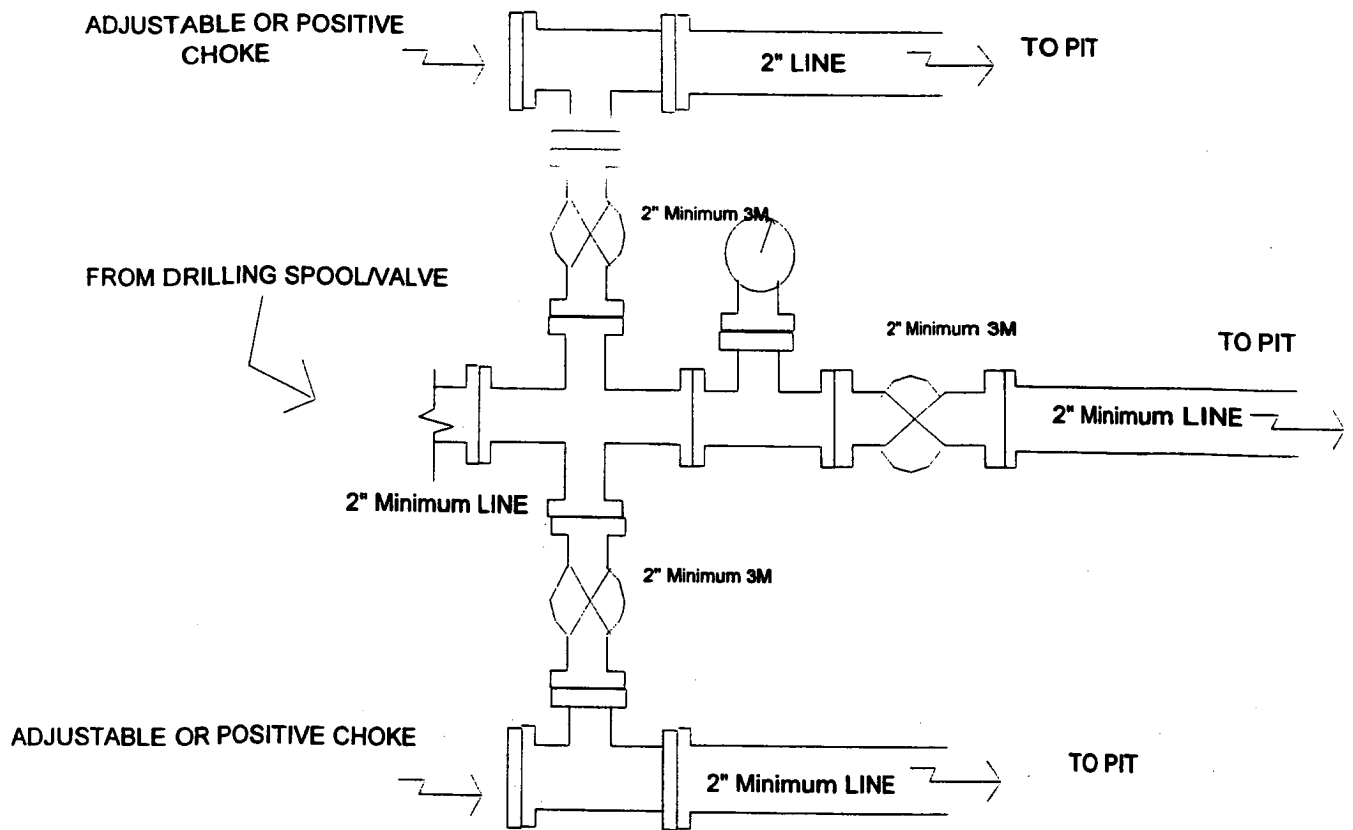
Drilling Rig

3000 psi BOP System



BURLINGTON RESOURCES

Drilling Rig Choke Manifold Configuration 3000 psi System



Choke manifold installation from Surface Casing
Point to Total Depth. 3,000 psi working pressure
equipment with two chokes.