

DISTRICT I  
1625 N. French Dr., Hobbs, N.M. 88240

DISTRICT II  
811 South First, Artesia, N.M. 88210

DISTRICT III  
1000 Rio Brazos Rd., Aztec, N.M. 87410

DISTRICT IV  
2040 South Pacheco, Santa Fe, NM 87505

State of New Mexico  
Energy, Minerals & Natural Resources Department

OIL CONSERVATION DIVISION  
2040 South Pacheco  
Santa Fe, NM 87505

Form C-102  
Revised August 15, 2000

Submit to Appropriate District Office  
State Lease - 4 Copies  
Fee Lease - 3 Copies

☐ AMENDED REPORT

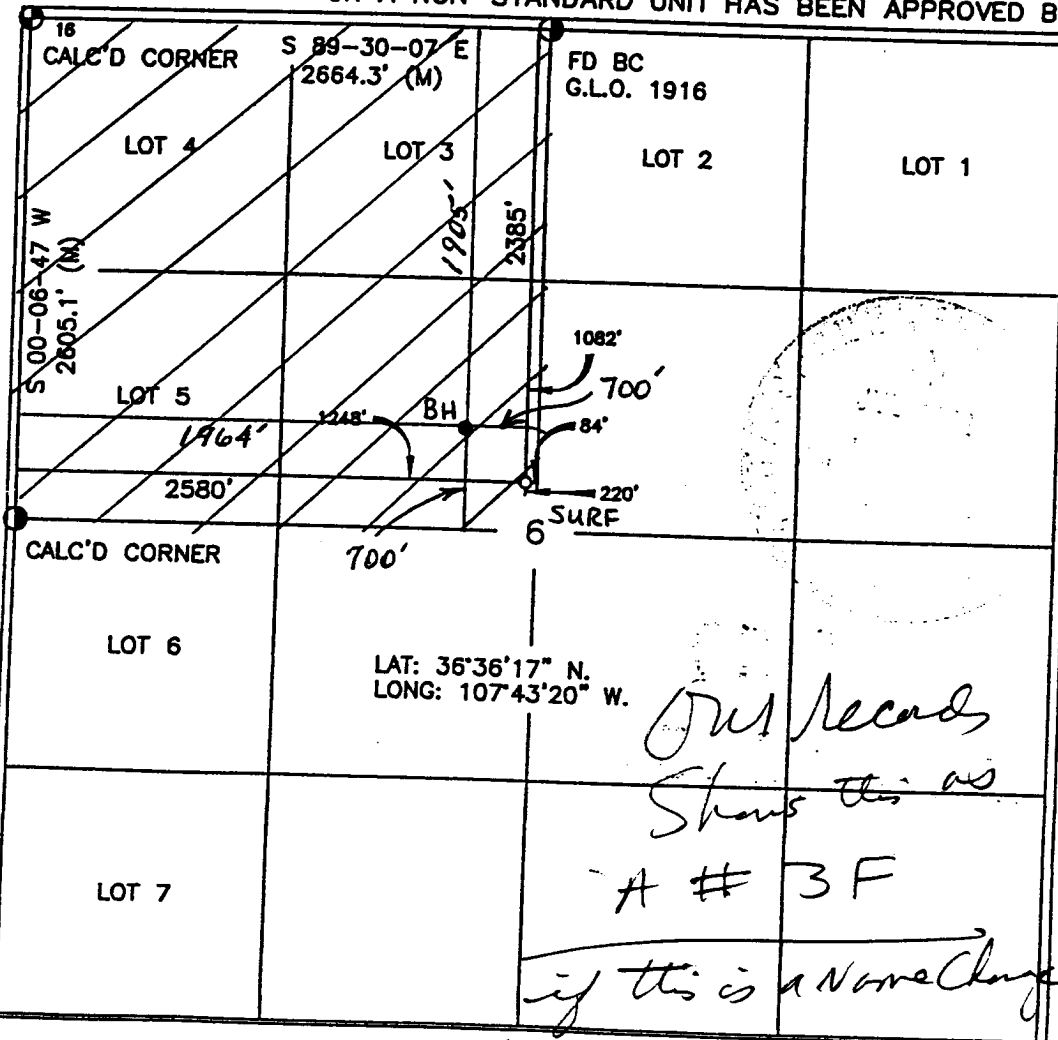
WELL LOCATION AND ACREAGE DEDICATION PLAT

<sup>1</sup> API Number <b>30-045-31051</b>		<sup>2</sup> Pool Code		<sup>3</sup> Pool Name <b>WC Gallup</b>			
<sup>4</sup> Property Code		<sup>5</sup> Property Name <b>SCHWERTFEGER "A"</b>				<sup>6</sup> Well Number <b>128 3F</b>	
<sup>7</sup> OGED No. <b>167067</b>		<sup>8</sup> Operator Name <b>XTO ENERGY INC.</b>				<sup>9</sup> Elevation <b>6757'</b>	

<sup>10</sup> Surface Location									
UL or lot no. <b>F</b>	Section <b>6</b>	Township <b>27-N</b>	Range <b>8-W</b>	Lot idn	Feet from the <b>2385'</b>	North/South line <b>NORTH</b>	Feet from the <b>2580'</b>	East/West line <b>WEST</b>	County <b>SAN JUAN</b>

<sup>11</sup> Bottom Hole Location If Different From Surface									
UL or lot no. <b>F</b>	Section <b>6</b>	Township <b>27-N</b>	Range <b>8-W</b>	Lot idn	Feet from the <b>1905'</b>	North/South line <b>North</b>	Feet from the <b>1964</b>	East/West line <b>West</b>	County <b>SAN JUAN</b>
<sup>12</sup> Dedicated Acres <b>160 NW/4</b>		<sup>13</sup> Joint or Infill		<sup>14</sup> Consolidation Code		<sup>15</sup> Order No.			

NO ALLOWABLE WILL BE ASSIGNED TO THIS COMPLETION UNTIL ALL INTERESTS HAVE BEEN CONSOLIDATED  
OR A NON-STANDARD UNIT HAS BEEN APPROVED BY THE DIVISION



17 OPERATOR CERTIFICATION

I hereby certify that the information contained herein is true and complete to the best of my knowledge and belief

*Darwin Steed*  
Signature  
**Darwin Steed**  
Printed Name  
**Operations Engineer**  
Title  
**July 11, 2002**  
Date

18 SURVEYOR CERTIFICATION

I hereby certify that the well location shown on this plat was plotted from field notes of actual survey made by me or under my supervision, and that the same is true and correct to the best of my knowledge and belief

**ROY A. RUSH**  
Date of Survey  
**8894**  
Signature and Seal of Professional Surveyor  
**8894**  
Certificate Number

*let us know on a Sunday*