

MC Com 8 #409H  
Basin Mancos/Lybrook Gallup  
(page 1)

Spud: 12/30/15

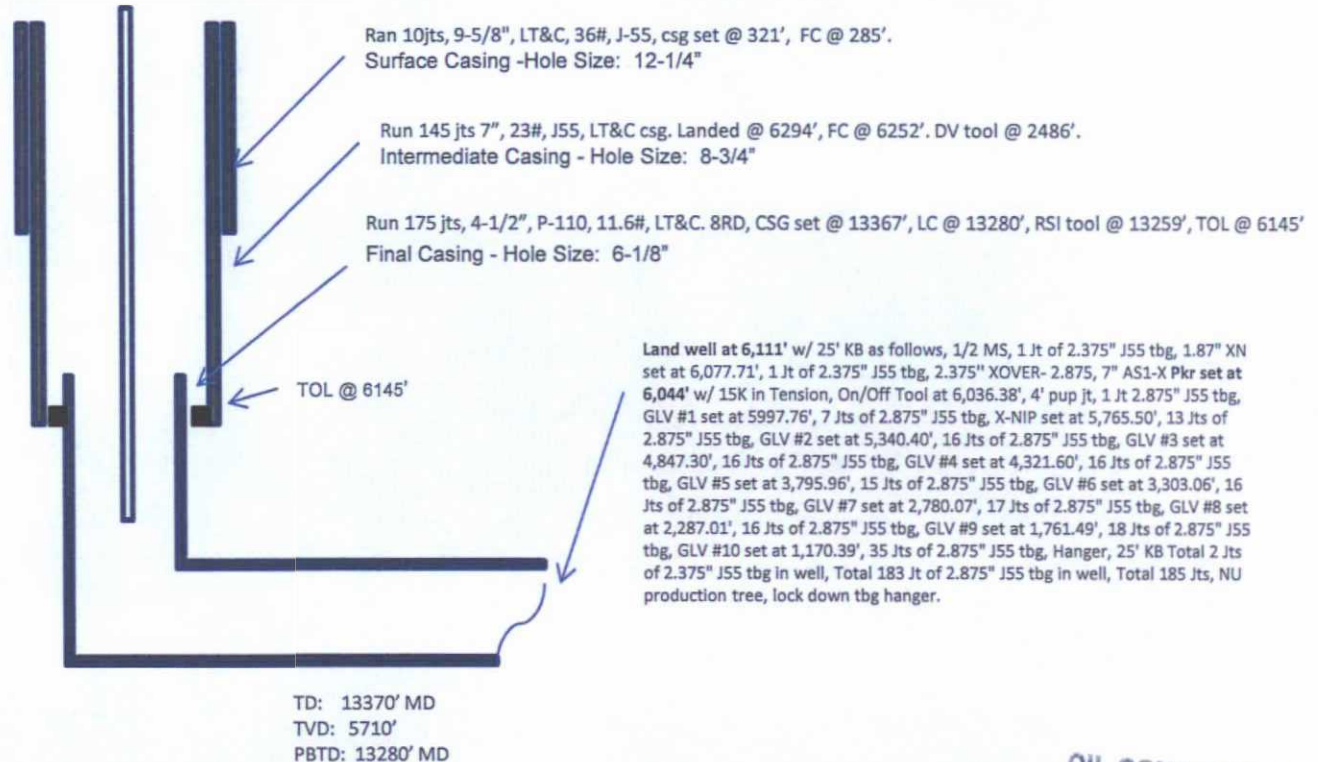
Completed: 3/18/16

SHL: 971' FSL & 2186' FWL  
SE/4 SW/4 Section 7 (N), T23N, R7W

BHL: 2326' FSL & 335' FWL  
NW/4 SW/4 Section 12 (L), T23N, R8W

Rio Arriba NM  
Elevation: 7307'  
API: 30-039-31337

Formation Name	MD	TVD
OJO ALAMO	1457	1447
KIRTLAND	1828	1810
PICTURE CLIFFS	2178	2153
LEWIS	2296	2269
CHACRA	2589	2556
CLIFF HOUSE	3677	3623
MENEFEE	3736	3681
PT LOOKOUT	4573	4501
MANCOS	4790	4714
GALLUP	5144	5061



HOLE SIZE	CASING	CEMENT	VOLUME	CMT TOP
12-1/4"	9-5/8"	10 lsx	163cu.ft.	Surface
8-3/4"	7"	915sx	1515 cu.ft.	Surface
6-1/8"	4-1/2"	650sx	881cu.ft.	TOL 6145'

Lg 3/21/16

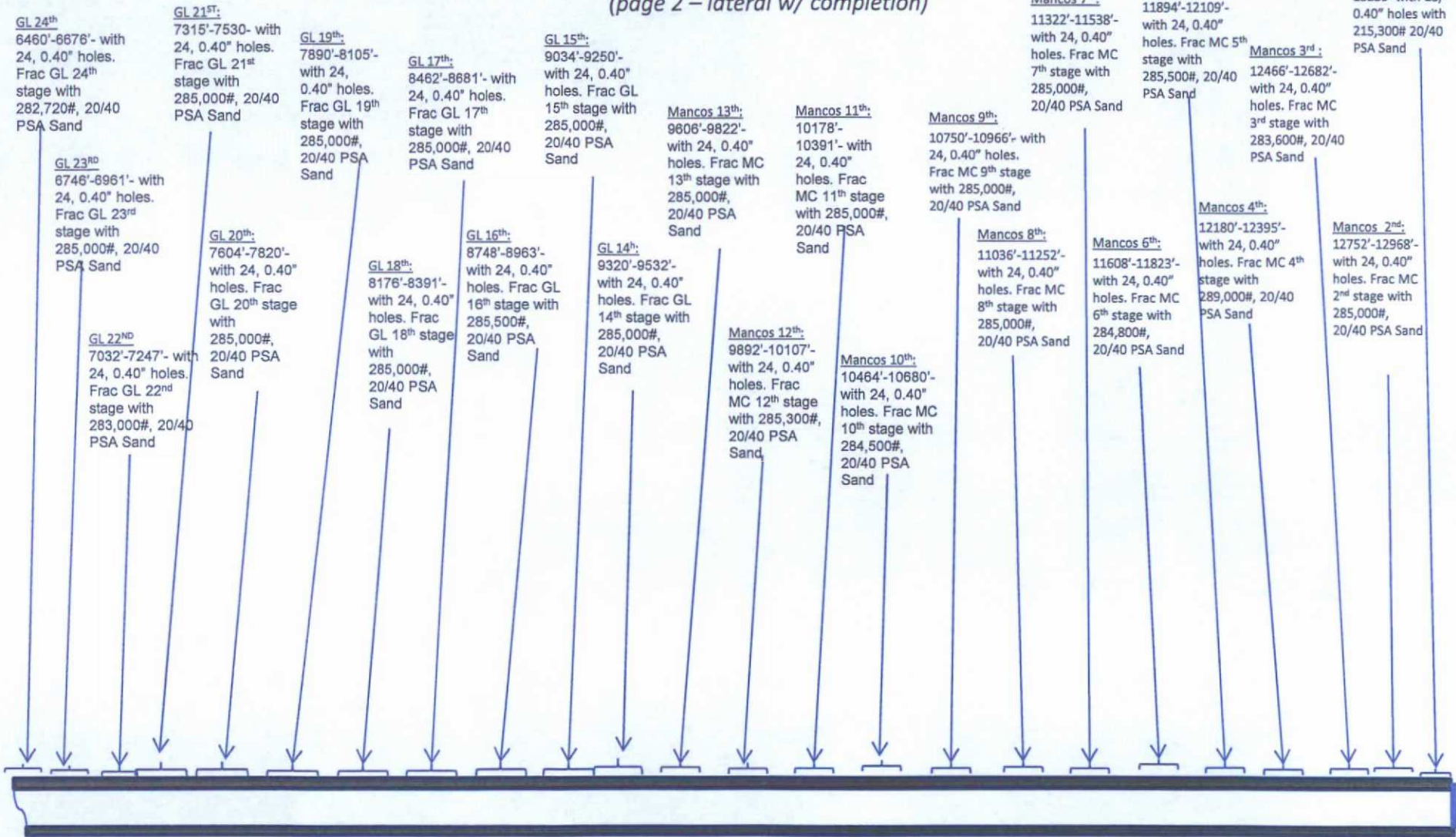
PC

OIL CONS. DIV DIST. 3

MAR 29 2016

CONFIDENTIAL

MC Com 8 #409H  
Basin Mancos/Lybrook Gallup  
(page 2 – lateral w/ completion)



See page 1 for upper portion of hole