

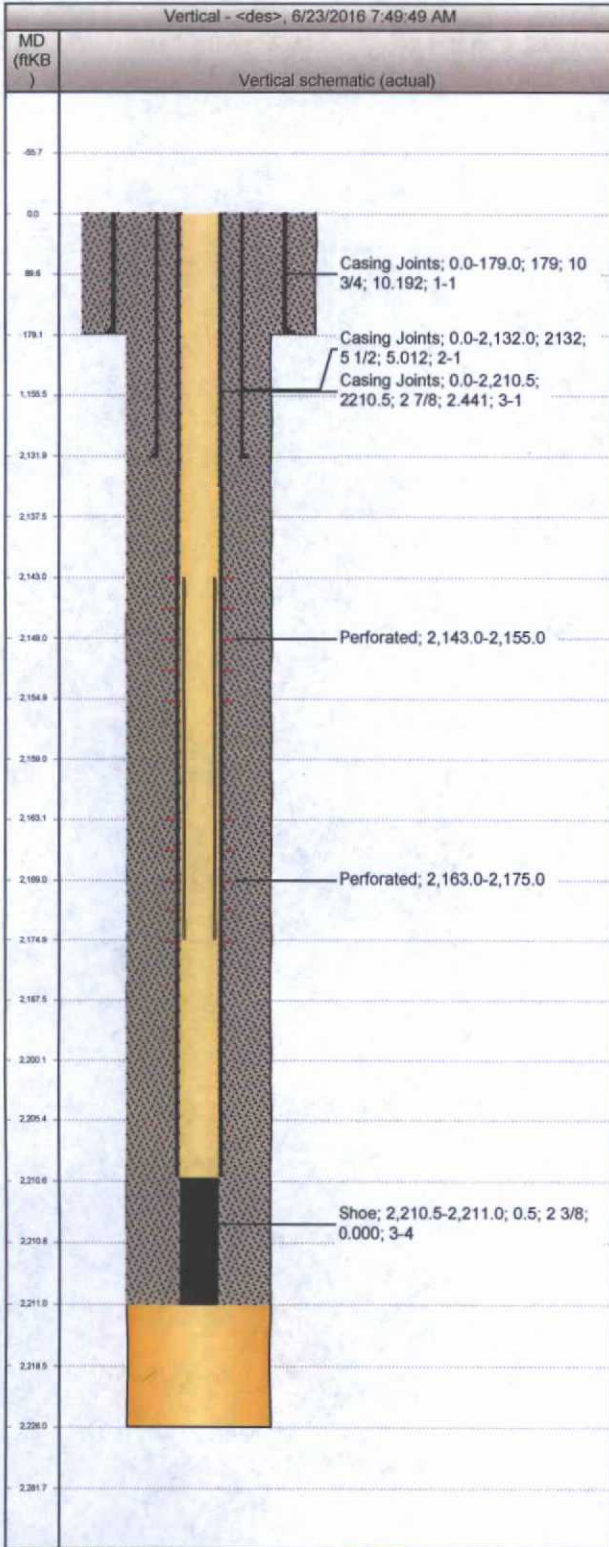
WellView

Downhole Well Profile

Well Name: MKL 19

API#JWI 3003906621	Location T26N-R07W-S08	Field Name BLANCO S PICTURED CLIFFS	Permit Number	State/Province New Mexico	Well Configuration Type Vertical
Original KB Elevation (ft)	KB-Tubing Head Distance (ft)	Spud Date 8/20/1953 00:00	Rig Release Date 9/17/1953 00:00	PBD (All) (ftKB) Original Hole - 2,200.0	Total Depth All (TVD) (ftKB)

Type							
Des	Make	Model	WP (psi)	Service	WP Top (psi)	Top Ring Gasket	Bore Min (in)



Casing Strings					
Csg Des	OD (in)	Wt/Len (lb/ft)	Grade	Top Thread	Set Depth (ftKB)
Surface	10 3/4	32.75	J-55		179.0
Production	5 1/2	14.00	H-40		2,132.0
Liner	2 7/8	6.50	J-55		2,211.0

Perforations			
Date	Top (ftKB)	Btm (ftKB)	Zone
	2,143.0	2,155.0	Pictured Cliffs, Original Hole
	2,163.0	2,175.0	Pictured Cliffs, Original Hole

Tubing Strings			
Tubing Description	Run Date	String Length (ft)	Set Depth (ftKB)
			0

Item Des	Jts	Make	Model	OD (in)	Wt (lb/ft)	Grade	Len (ft)

Rod Strings			
Rod Description	Run Date	String Length (ft)	Set Depth (ftKB)

OIL CONS. DIV DIST. 3
JUN 29 2016