

# W LYBROOK UT #708H

## Lybrook Mancos W

(page 1)

Spud: 2/19/16

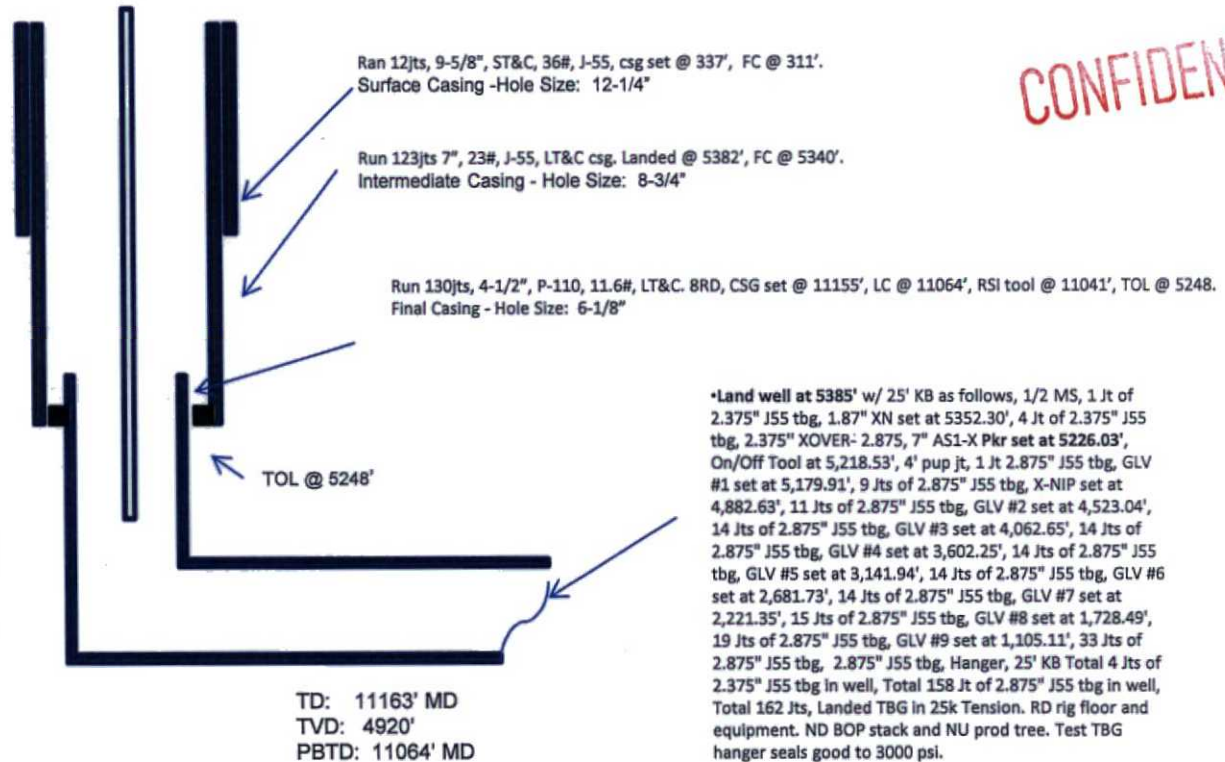
Completed: 6/26/16

SHL: 860' FSL & 404' FEL  
SE/4 SE/4 Section 12(P), T23N, R9W

BHL: 335' FNL & 706' FWL  
NW/4 NW/4 Section 12 (D), T23N, R9W

San Juan, NM  
Elevation: 6733'  
API: 30-045-35740

Tops	MD	TVD
OJO ALIMO	579	579
KIRTLAND	759	759
PICTURE CLIFFS	1272	1264
LEWIS	1425	1414
CHACRA	1642	1627
CLIFF HOUSE	2769	2732
MENEFEE	2792	2754
POINT LOOKOUT	3729	3673
MANCOS	3902	3843
GALLUP	4257	4191



CONFIDENTIAL

HOLE SIZE	CASING	CEMENT	VOLUME	CMT TOP
12-1/4"	9-5/8"	10 lsx	162cu.ft.	Surface
8-3/4"	7"	795 sx	1590cu. ft.	Surface
6-1/8"	4-1/2"	550sx	640cu. ft.	TOL 5248'

LG 7/5/16

AV

3

# W LYBROOK UT #708H

## Lybrook Mancos W

(page 2 – lateral with completion)

### Gallup 15th:

7930'-8088'- with 24,  
0.35" holes. Frac MC  
15<sup>th</sup> stage with  
215,160#, 20/40 PSA  
Sand

### Gallup 13th:

8344'-8500'- with  
24, 0.35" holes.  
Frac MC 13<sup>th</sup> stage  
with 214,421#,  
20/40 PSA Sand

### Gallup 11th:

8756'-8910'- with 24,  
0.35" holes. Frac MC  
11<sup>th</sup> stage with  
213,759#, 20/40 PSA  
Sand

### Gallup 8th:

9374'-9530'- with 24, 0.35"  
holes. Frac MC 8<sup>th</sup> stage  
with 215,006#, 20/40 PSA  
Sand

### Gallup 4th:

10198'-10354'-  
with 24, 0.35"  
holes. Frac MC 4<sup>th</sup>  
stage with  
215,157#, 20/40  
PSA Sand

### Gallup 1st:

10822'-10962' +  
RSI TOOL @  
11041' with 18,  
0.35" holes. with  
116,222# 20/40  
PSA Sand

### Gallup 9th:

9168'-9324'- with  
24, 0.35" holes.  
Frac MC 9<sup>th</sup> stage  
with 215,280#,  
20/40 PSA Sand

### Gallup 6th:

9786'-9942'- with  
24, 0.35" holes.  
Frac MC 6<sup>th</sup> stage  
with 224,940#,  
20/40 PSA Sand

### Gallup 3rd:

10404'-10560'- with  
24, 0.35" holes.  
Frac MC 3<sup>rd</sup> stage  
with 216,020#,  
20/40 PSA Sand

### Gallup 14th:

8138'-8294'- with  
24, 0.35" holes.  
Frac MC 14<sup>th</sup>  
stage with  
215,024#, 20/40  
PSA Sand

### Gallup 12th:

8546'-8706'- with 24,  
0.35" holes. Frac MC  
12<sup>th</sup> stage with  
214,600#, 20/40 PSA  
Sand

### Gallup 10th:

8954'-9118'-  
with 24, 0.35"  
holes. Frac MC  
10<sup>th</sup> stage with  
214,680#,  
20/40 PSA Sand

### Gallup 7th:

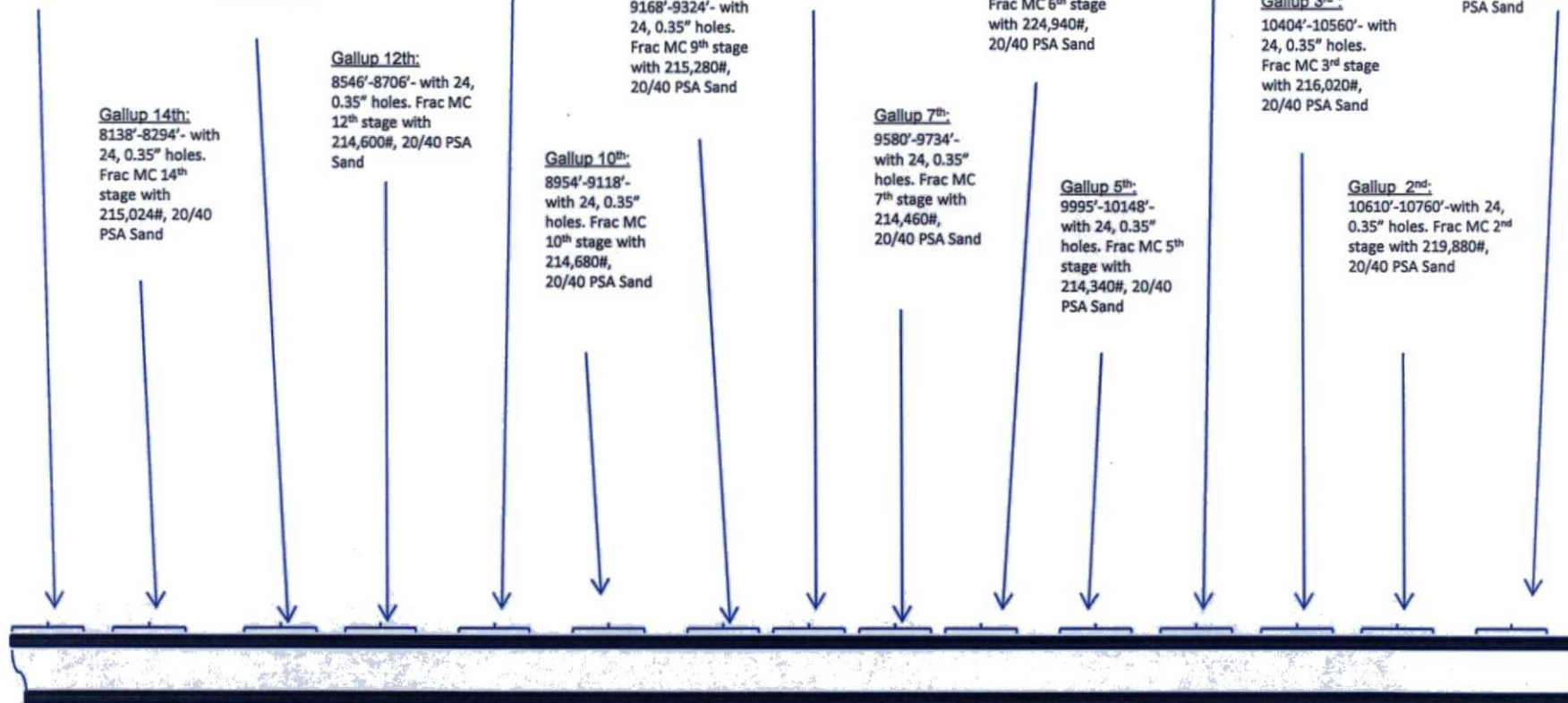
9580'-9734'-  
with 24, 0.35"  
holes. Frac MC  
7<sup>th</sup> stage with  
214,460#,  
20/40 PSA Sand

### Gallup 5th:

9995'-10148'-  
with 24, 0.35"  
holes. Frac MC 5<sup>th</sup>  
stage with  
214,340#, 20/40  
PSA Sand

### Gallup 2nd:

10610'-10760'-with 24,  
0.35" holes. Frac MC 2<sup>nd</sup>  
stage with 219,880#,  
20/40 PSA Sand



See page 1 for upper portion of hole

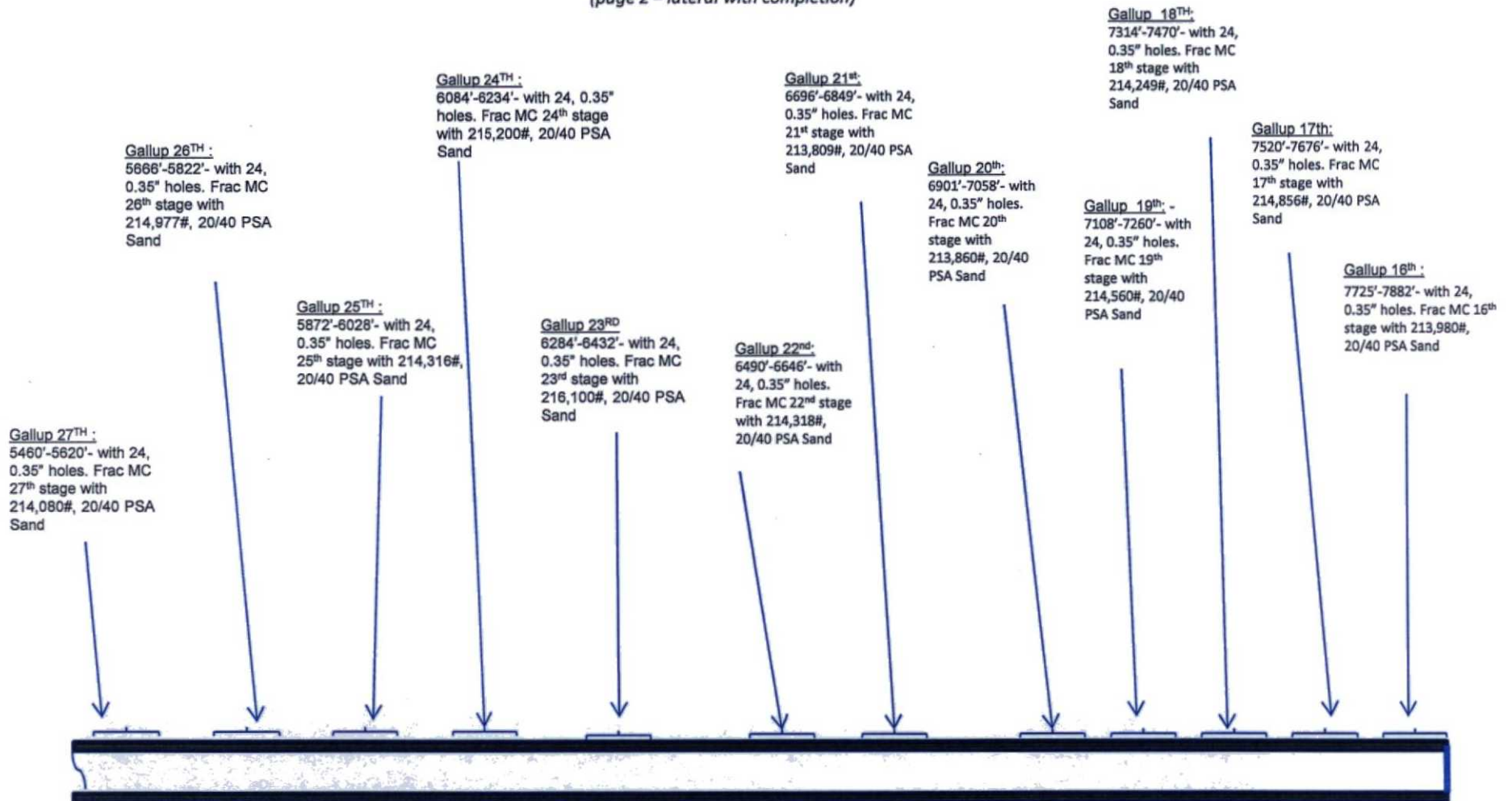
OIL CONS. DIV DIST. 3

JUL 13 2016

# W LYBROOK UT #708H

## Lybrook Mancos W

(page 2 – lateral with completion)



See page 1 for upper portion of hole