

# KWU # 771H

## Kimbeto Wash Unit (page 1)

Spud: 5/19/16

Completed: 8/9/16

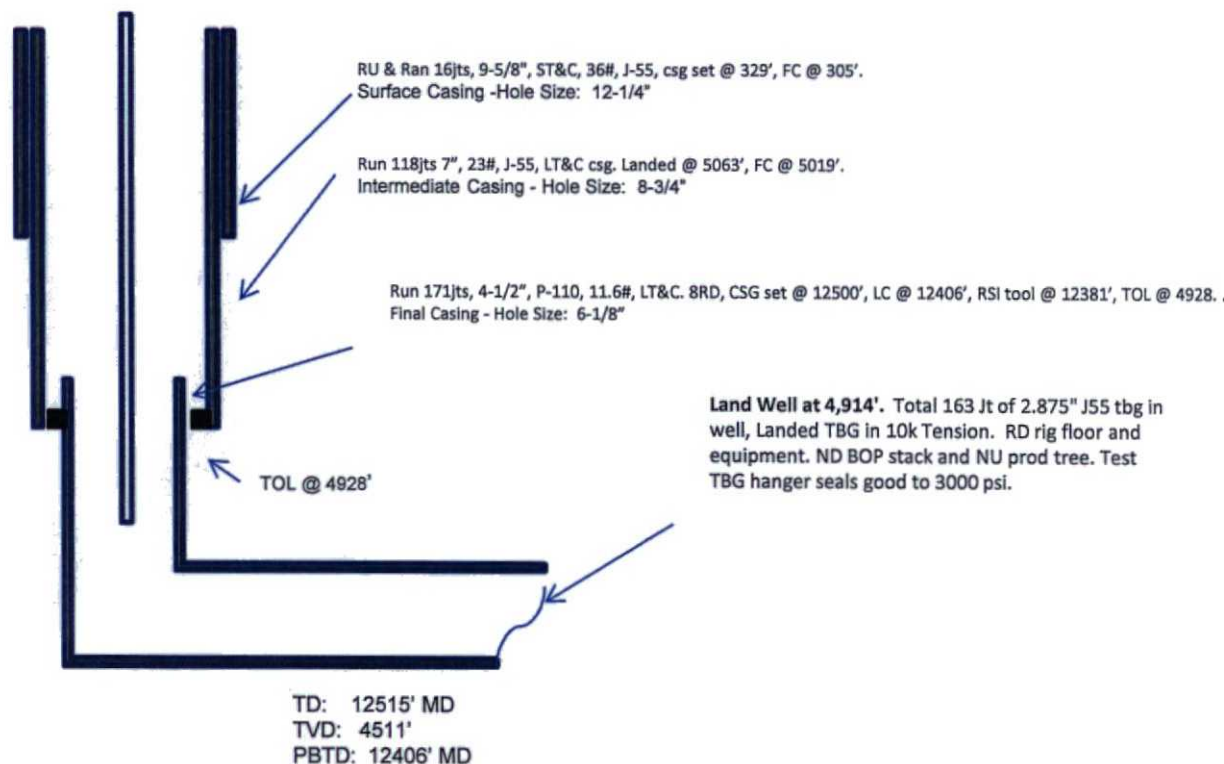
Amended TOL

SHL: 393' FSL & 1128' FEL  
SE/4 SE/4 Section 17(P), T23N, R9W

BHL: 334' FNL & 2193' FEL  
NW/4 NE/4 Section 18 (B), T23N, R9W

San Juan, NM  
Elevation: 6561'  
API: 30-045-35756

Formation	MD	TVD
PICTURE CLIFFS	802	802
LEWIS	924	923
CHACRA	1001	999
CLIFF HOUSE	2293	2217
MENEFEE	2309	2232
POINT LOOKOUT	3417	3258
MANCOS	3532	3364
GALLUP	3901	3706



HOLE SIZE	CASING	CEMENT	VOLUME	CMT TOP
12-1/4"	9-5/8"	101sx	162cu.ft.	Surface
8-3/4"	7"	780 sx	1260cu. ft.	Surface
6-1/8"	4-1/2"	685 sx	932 cu. ft.	TOL 4928'

LG 8/22/16

RY

3

# KWU # 771H Kimbeto Wash Unit

(page 2 – lateral with completion)

## MC 15th:

9343'-9499'- with 24,  
0.35" holes. Frac MC  
15<sup>th</sup> stage with  
199,028#, 20/40 PSA  
Sand

## MC 13th:

9755'-9906' with  
24, 0.35" holes.  
Frac MC 13<sup>th</sup> stage  
with 201,712#,  
20/40 PSA Sand

## MC 11th:

10167'-10323'- with 24,  
0.35" holes. Frac MC  
11<sup>th</sup> stage with  
170,240#, 20/40 PSA  
Sand

## MC 8th:

10788'-10941'- with 24,  
0.35" holes. Frac MC 8<sup>th</sup>  
stage with 308,035#, 20/40  
PSA Sand

## MC 4th:

•11609'-11765'-  
with 24, 0.35"  
holes. Frac MC 4<sup>th</sup>  
stage with  
303,139#, 20/40  
PSA Sand

## MC 1st:

12227'-12332' +  
RSI TOOL @  
12381' with 18,  
0.35" holes. with  
212,083# 20/40  
PSA Sand

## MC 9th:

10579'-10735'- with  
24, 0.35" holes.  
Frac MC 9<sup>th</sup> stage  
with 301,376#,  
20/40 PSA Sand

## MC 6th:

11197'-11353'-  
with 24, 0.35"  
holes. Frac MC 6<sup>th</sup>  
stage with  
294,639#, 20/40  
PSA Sand

## MC 3rd:

11818'-11971'- with  
24, 0.35" holes.  
Frac MC 3<sup>rd</sup> stage  
with 192,756#,  
20/40 PSA Sand

## MC 14th:

9549'-9705'- with  
24, 0.35" holes.  
Frac MC 14<sup>th</sup>  
stage with  
195,112#, 20/40  
PSA Sand

## MC 12th:

9961'-10117'- with  
24, 0.35" holes. Frac  
MC 12<sup>th</sup> stage with  
197,354#, 20/40 PSA  
Sand

## MC 10th:

10380'-10529'-  
with 24, 0.35"  
holes. Frac MC  
10<sup>th</sup> stage with  
204,308#,  
20/40 PSA Sand

## MC 7th:

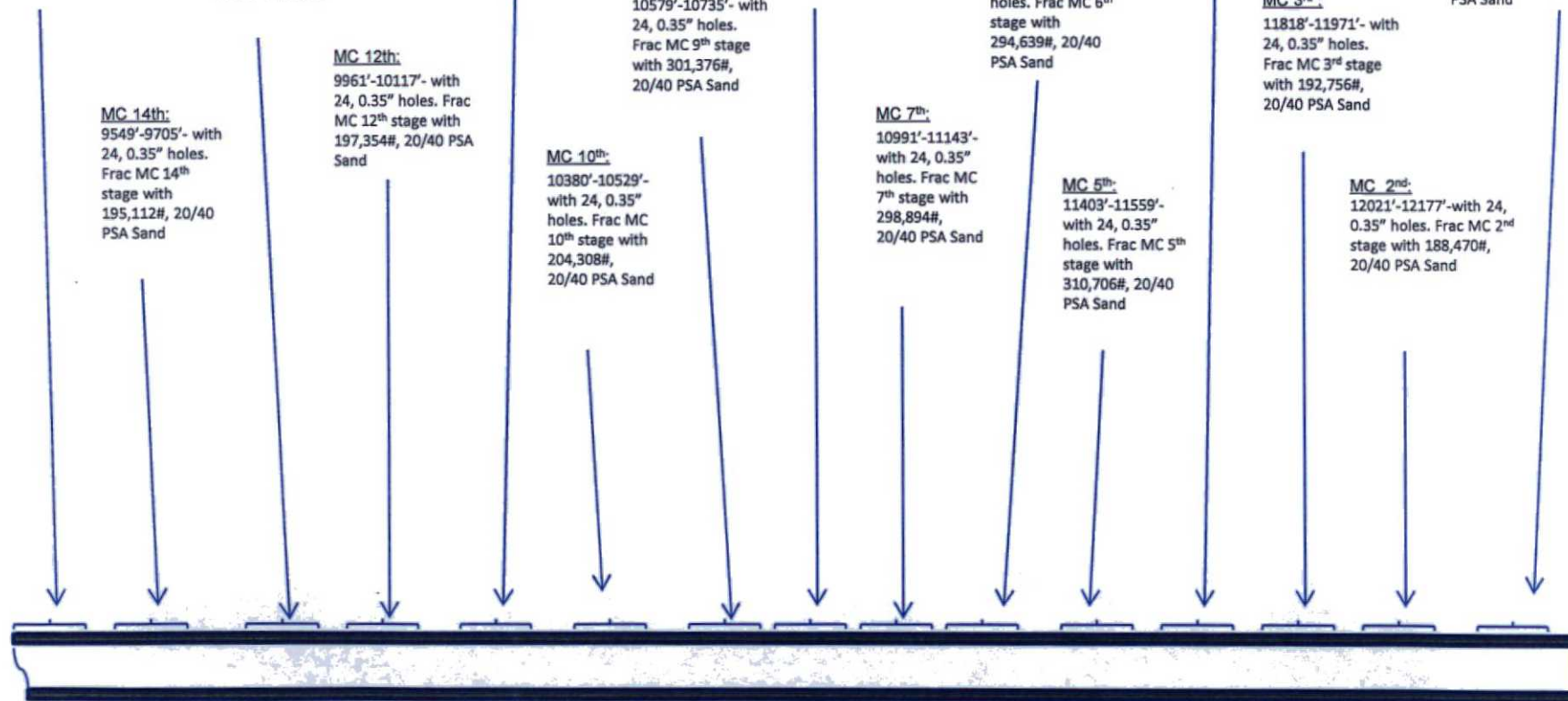
10991'-11143'-  
with 24, 0.35"  
holes. Frac MC  
7<sup>th</sup> stage with  
298,894#,  
20/40 PSA Sand

## MC 5th:

11403'-11559'-  
with 24, 0.35"  
holes. Frac MC 5<sup>th</sup>  
stage with  
310,706#, 20/40  
PSA Sand

## MC 2nd:

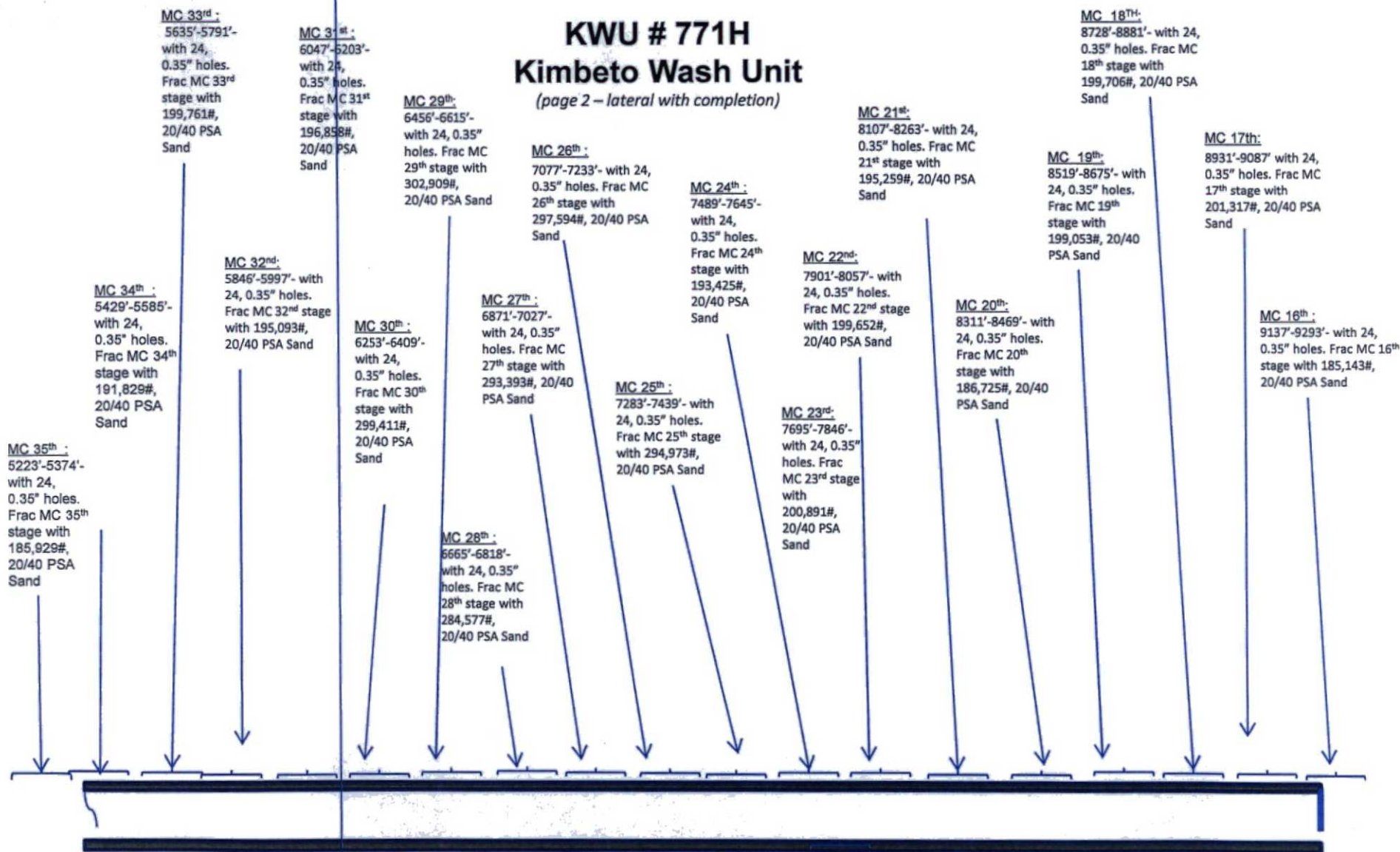
12021'-12177'-with 24,  
0.35" holes. Frac MC 2<sup>nd</sup>  
stage with 188,470#,  
20/40 PSA Sand



See page 1 for upper portion of hole

# **KWU # 771H** **Kimbeto Wash Unit**

(page 2 – lateral with completion)



See page 1 for upper portion of hole