

District I (575) 393-6161  
1625 N. French Dr., Hobbs, NM 88240  
District II (575) 748-1283  
811 S. First St., Artesia, NM 88210  
District III (505) 334-6178  
1000 Rio Brazos Road, Aztec, NM 87410  
District IV (505) 827-8198  
1220 S. St. Francis Dr., Santa Fe, NM 87505

State of New Mexico  
Energy Minerals and Natural Resources

Oil Conservation Division  
1220 South St. Francis Dr.  
Santa Fe, NM 87505

Form C-106  
Revised August 1, 2011

3-25 ACT Permit No.

NOTICE OF INTENTION TO UTILIZE AUTOMATIC CUSTODY TRANSFER EQUIPMENT

Operator WPX Energy Production, LLC

Address 721 S. Main, Aztec, NM 87410 County San Juan

Lease(s) to be served by this ACT Unit: NMNM-135216A (W Lybrook Unit)

Pool(s) to be served by this ACT Unit Lybrook Mancos W (98157)

Location of ACT System: Unit I Section 14 Township 23N Range 9W

Order No. authorizing commingling between leases if more than one lease is to be served by this system.

R-14051 Date 09/08/2015

Order No. authorizing commingling between pools if more than one pool is to be served by this system

N/A Date N/A

Authorized transporter of oil from this system Whiptail Midstream, LLC

Transporter's address 15 West 6<sup>th</sup> Street, Tulsa, OK 74119

Maximum expected daily through-put for this system: 12,000 BBL/Day

If system fails to transfer oil due to malfunction or otherwise, waste by overflow will be averted by:

CHECK ONE: A. ☐ Automatic shut-down facilities B. ☒ Providing adequate available capacity to receive production  
as required by 19.15.18.15.C(8) NMAC during maximum unattended time of lease operation  
19.15.18.15.C(9) NMAC

If "A" above is checked, will flowing wells be shut-in at the header manifold or at the wellhead?

NA Maximum well-head shut-in pressure N/A

If "B" above is checked, how much storage capacity is available above the normal high working level of the

surge tank 1,200 BBLs.

What is the normal maximum unattended time of lease operation? Sixteen (16) Hours.

What device will be used for measuring oil in this ACT unit?

CHECK ONE: ☐ Positive displacement meter ☐ Weir-type measuring vessel  
☐ Positive volume metering chamber ☒ Other; describe Coriolis Meter

Remarks: This will be two 6,000 BBL per day LACTs selling to pipeline.

OPERATOR:

I hereby certify above information is true and complete to best of my knowledge and subject ACT system will be installed and operated in accordance with Rule 19.15.18.15 NMAC. Approval of this Form C-106 does not eliminate necessity of an approved C-104 prior to running any oil or gas from this system.

Signature [Signature]

Printed Name & Title Robert Jordan, Production Senior Foreman

E-mail Address robert.jordan@wpxenergy.com

Date 5-25-17 Telephone (505) 333-1850

OIL CONSERVATION DIVISION

Approved by: [Signature]

Title: Deputy Oil & Gas Inspector,  
District #3

Date: 6/8/17

INSTRUCTIONS: Submit one copy of Form C-106 with following attachments to appropriate district office.

- 1) Lease plat showing all wells which will be produced in ACT system.
- 2) Schematic diagram of battery and ACT equipment showing all major components and means employed to prove accuracy of measuring device.
- 3) Letter from transporter agreeing to utilization of ACT system as shown on schematic diagram.

21



**NOTICE OF INTENTION TO UTILIZE AUTOMATIC CUSTODY TRANSFER EQUIPMENT  
W. LYBROOK UNIT 716H, 718H, 719H, 753H, 754H, 755H and W. LYBROOK UNIT 710H, 712H, 714H,  
750H, 751H, 752H PIPELINE LACT UNIT**

**WELLS TO BE SERVED BY PIPELINE LACT UNIT:**

- W Lybrook Unit 710H / API #30-045-35803 / UNIT F (SE/NW) Sec. 13, T23N, R9W, NMPM
- W Lybrook Unit 712H / API #30-045-35776 / UNIT F (SE/NW) Sec. 13, T23N, R9W, NMPM
- W Lybrook Unit 714H / API #30-045-35802 / UNIT F (SE/NW) Sec. 13, T23N, R9W, NMPM
- W Lybrook Unit 750H / API #30-045-35804 / UNIT F (SE/NW) Sec. 13, T23N, R9W, NMPM
- W Lybrook Unit 751H / API #30-045-35806 / UNIT F (SE/NW) Sec. 13, T23N, R9W, NMPM
- W Lybrook Unit 752H / API #30-045-35805 / UNIT F (SE/NW) Sec. 13, T23N, R9W, NMPM
- W Lybrook Unit 716H / API #30-045-35813 / UNIT I (NE/SE) Sec. 14, T23N, R9W, NMPM
- W Lybrook Unit 718H / API #30-045-35774 / UNIT I (NE/SE) Sec. 14, T23N, R9W, NMPM
- W Lybrook Unit 719H / API #30-045-35812 / UNIT I (NE/SE) Sec. 14, T23N, R9W, NMPM
- W Lybrook Unit 753H / API #30-045-35815 / UNIT I (NE/SE) Sec. 14, T23N, R9W, NMPM
- W Lybrook Unit 754H / API #30-045-35817 / UNIT I (NE/SE) Sec. 14, T23N, R9W, NMPM
- W Lybrook Unit 755H / API #30-045-35816 / UNIT I (NE/SE) Sec. 14, T23N, R9W, NMPM

**19.15.18.15 AUTOMATIC CUSTODY TRANSFER EQUIPMENT:**

A. Oil shall be received and measured in facilities of an approved design. The facilities shall permit the testing of each well at reasonable intervals and may be comprised of manually gauged, closed stock tanks for which the operator of the ACT system has prepared proper strapping tables, or of ACT equipment. The division shall permit ACT equipment's use only after the operator complies with the following. The operator shall file with the division form C-106 and receive approval for use of the ACT equipment prior to transferring oil through the ACT system. The carrier shall not accept delivery of oil through the ACT system until the division has approved form C-106.

- *Summary is attached to Form C-106 Notice of Intent to Utilize Automatic Custody Transfer Equipment*

B. The operator of the ACT system shall submit form C-106 to the appropriate division district office, which is accompanied by the following:

- (1) plat of the lease showing all wells that the any well operator will produce into the ACT system;
  - *Attached as part of Form C-106 Notice of Intent*
- (2) schematic diagram of the ACT equipment, showing on the diagram all major components such as surge tanks and their capacity, extra storage tanks and their capacity, transfer pumps, monitors, reroute valves, treaters, samplers, strainers, air and gas eliminators, back pressure valves and metering devices (indicating type and capacity, i.e. whether automatic measuring tank, positive volume metering chamber, weir-type measuring vessel or positive displacement meter); the schematic diagram shall also show means employed to prove the measuring device's accuracy; and

- *Attached as part of Form C-106 Notice of Intent*

- (3) letter from transporter agreeing to utilization of ACT system as shown on schematic diagram.

- *Attached as part of Form C-106 Notice of Intent*

C. The division shall not approve form C-106 unless the operator of the ACT system will install and operate the ACT system in compliance with the following requirements.

- (1) Provision is made for accurate determination and recording of uncorrected volume and applicable temperature, or of temperature corrected volume. The system's overall accuracy shall equal or surpass manual methods.

- *The LACT system is more accurate when compared to a manual tank sale. It is proved per BLM Onshore Order #4 Measurement of Oil and API MPMS Chapter 4 Proving Systems; with a volumetric prover that meets the requirements set forth in Onshore Order #4. The LACT also has a temperature RTD which will be calibrated semi-annually, unless more frequent verification is requested by the division.*

- (2) Provision is made for representative sampling of the oil transferred for determination of API gravity and BS&W content.

- *The LACT is equipped with a flow proportional sampler (sample probe and actuated valve). The sampled fluid is stored in a sealed cylinder that is used for API gravity and S&W determination.*



(3) Provision is made if required by either the oil's producer or the transporter to give adequate assurance that the ACT system runs only merchantable oil.

- *The LACT is equipped with a water cut analyzer that communicates with the flow computer. When the S&W set point is reached the divert valve will engage sending non-merchantable oil to a divert tank. The set point can be adjusted in the flow computer but only if agreed upon by both shipper and producer.*

(4) Provision is made for set-stop counters to stop the flow of oil through the ACT system at or prior to the time the allowable has been run. Counters shall provide non-reset totalizers that are visible for inspection at all times.

- *The Coriolis meter has non-resettable totalizer which is always visibly available on the LCD display.*

(5) Necessary controls and equipment are enclosed and sealed, or otherwise arranged to provide assurance against, or evidence of, accidental or purposeful mismeasurement resulting from tampering.

- *Required ports are sealed and tracked in the seal log.*

(6) The ACT system's components are properly sized to ensure operation within the range of their established ratings. All system components that require periodic calibration or inspection for proof of continued accuracy are readily accessible; the frequency and methods of the calibration or inspection shall be as set forth in Paragraph (12) of Subsection C of 19.15.18.15 NMAC.

- *The Coriolis is proved per BLM Onshore Order #4 Measurement of Oil and API MPMS Chapter 4 Proving Systems; with a volumetric prover that meets the requirements set forth in Onshore Order #4. The prover is NIST traceable and water drawn on a bi-annual basis. Proving will be consistent with Onshore Order #4, unless a variance is granted by the Division. NMOCD representatives are sent the schedule to witness if desired. The temperature transmitter is verified on a semi-annual basis, unless more frequent verification is requested by the Division. The water cut analyzer is calibrated as needed.*

(7) The control and recording system includes adequate fail-safe features that provide assurance against mismeasurement in the event of power failure, or the failure of the ACT system's component parts.

- *In the event of power failure, the divert valve mechanically goes to "failed state" and no longer sales oil but only sends it to the divert tank.*
- *All of the historized volume data is stored in flow computer memory with battery backup and is also transmitted by SCADA, multiple times a day, to an office server. So even during a power failure no oil volume is lost.*
- *In the event of a malfunction, the LACT unit is programmed to shut off and divert valve is forced to close and no longer sales oil but only sends it to the divert tank. The malfunction is also logged by the flow computer.*

(8) The ACT system and allied facilities include fail-safe equipment as may be necessary, including high level switches in the surge tank or overflow storage tank that, in the event of power failure or malfunction of the ACT or other equipment, will shut down artificially lifted wells connected to the ACT system and will shut in flowing wells at the well-head or at the header manifold, in which latter case the operator of the ACT system shall pressure test all flowlines to at least 1½ times the maximum well-head shut-in pressure prior to the ACT system's initial use and every two years thereafter.

- *Hi level switches are in place and will shut the well in at the inlet to the production unit in the event of a full tank. Flow lines were tested to 1 ½ times shut in pressure at initial construction. Testing will commence every two years to ensure piping integrity.*

(9) As an alternative to the requirements of Paragraph (8) of Subsection C of 19.15.18.15 NMAC the producer shall provide and at all times maintain a minimum of available storage capacity above the normal high working level of the surge tank to receive and hold the amount of oil that may be produced during maximum unattended time of lease operation.

- *N/A*

(10) In all ACT systems employing automatic measuring tanks, weir-type measuring vessels, positive volume metering chambers or any other volume measuring container, the container and allied components shall be properly calibrated prior to initial use and shall be operated, maintained and inspected as necessary to ensure against incrustation, changes in clingage factors, valve leakage or other leakage and improper action of floats, level detectors, etc.

- *N/A – Coriolis Meter*

(11) In ACT systems employing positive displacement meters, the meter and allied components shall be properly calibrated prior to initial use and shall be operated, maintained and inspected as necessary to ensure against oil mismeasurement.

- *The Coriolis is proved per BLM Onshore Order #4 Measurement of Oil and API MPMS Chapter 4 Proving Systems; with a volumetric prover that meets the requirements set forth in Onshore Order #4. The prover is NIST traceable and water drawn on a bi-annual basis. Monthly proving will continue per the rule, unless a variance is granted by the Division. NMOCD representatives are sent the schedule to witness if desired. The temperature transmitter is verified on a semi-annual basis, unless more frequent verification is requested by the Division.*

(12) The operator of the ACT system shall check the measuring and recording devices of ACT systems for accuracy at least once each month unless it has obtained an exception to such determination from the division. Where applicable, the operator of the ACT system shall use API standard 1101, Measurement of Petroleum Hydrocarbons by Positive Displacement Meter. Meters may be proved against master meters, portable prover tanks or prover tanks permanently installed on the lease. If the operator of the ACT system uses permanently installed prover tanks, the distance between the opening and closing levels and the provision for determining the opening and closing readings shall be sufficient to detect variations of 5/100 of one percent. The operator of the ACT system shall file reports of determination on the division form entitled "meter test report" or on another acceptable form in duplicate with the appropriate division district office.

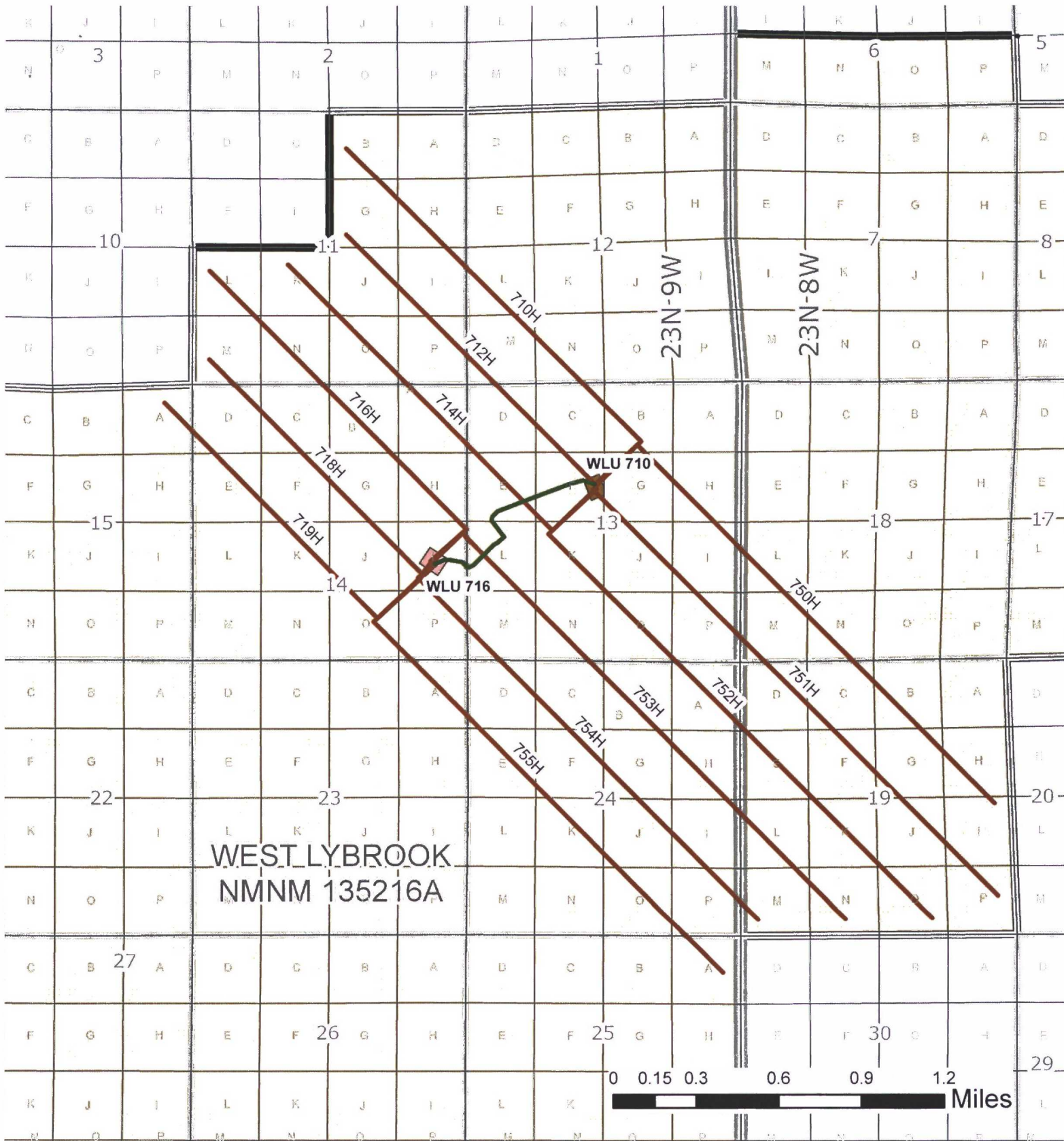
- *The Coriolis is proved per BLM Onshore Order #4 Measurement of Oil and API MPMS Chapter 4 Proving Systems; with a volumetric prover that meets the requirements set forth in Onshore Order #4. The prover is NIST traceable and water drawn on a bi-annual basis. Monthly proving will continue per the rule, unless a variance is granted by the Division. NMOCD representatives are sent the schedule to witness if desired. The temperature transmitter is verified on a semi-annual basis, unless more frequent verification is requested by the Division.*

(13) To obtain an exception to the requirement in Paragraph (12) of Subsection C of 19.15.18.15 NMAC that all measuring and recording devices be checked for accuracy once each month, either the producer or transporter may file a request with the director setting forth facts pertinent to the exception. The application shall include a history of the average factors previously obtained, both tabulated and plotted on a graph of factors versus time, showing that the particular installation has experienced no erratic drift. The applicant shall also furnish evidence that the other interested party has agreed to the exception. The director may then set the frequency for determination of the system's accuracy at the interval which the director deems prudent.






- *N/A*

D. The division may revoke its approval of an ACT system's form C-106 if the system's operator fails to operate it in compliance with 19.15.18.15 NMAC.





Scale (absolute) -  
1:30,000

-  Pipeline
-  Laterals
-  Well Pad
-  Well & Remote w/LACT Equip & Tank Battery
-  Approved Unit



**WLU 716 Pad**  
**Lease Plat Map**  
 San Juan County, NM



District I  
1625 N. French Drive, Hobbs, NM 88240  
Phone: (575) 393-6161 Fax: (575) 393-0720  
District II  
811 S. First Street, Artesia, NM 88210  
Phone: (575) 748-1283 Fax: (575) 748-9720  
District III  
1000 Rio Brazos Road, Aztec, NM 87410  
Phone: (505) 334-6178 Fax: (505) 334-6170  
District IV  
1220 S. St. Francis Drive, Santa Fe, NM 87505  
Phone: (505) 476-3460 Fax: (505) 476-3462

State of New Mexico  
Energy, Minerals & Natural Resources Department

Form C-102  
Revised August 1, 2011

Submit one copy to  
Appropriate District Office

OIL CONSERVATION DIVISION  
1220 South St. Francis Drive  
Santa Fe, NM 87505

☐ AMENDED REPORT

WELL LOCATION AND ACREAGE DEDICATION PLAT

*API Number <b>30-045-35803</b>		*Pool Code <b>98157</b>	*Pool Name <b>LYBROOK MANCOS W</b>
*Property Code <b>315250</b>	*Property Name <b>W LYBROOK UNIT</b>		*Well Number <b>710H</b>
*GRID No. <b>120782</b>	*Operator Name <b>WPX ENERGY PRODUCTION, LLC</b>		*Elevation <b>6700'</b>

10 Surface Location

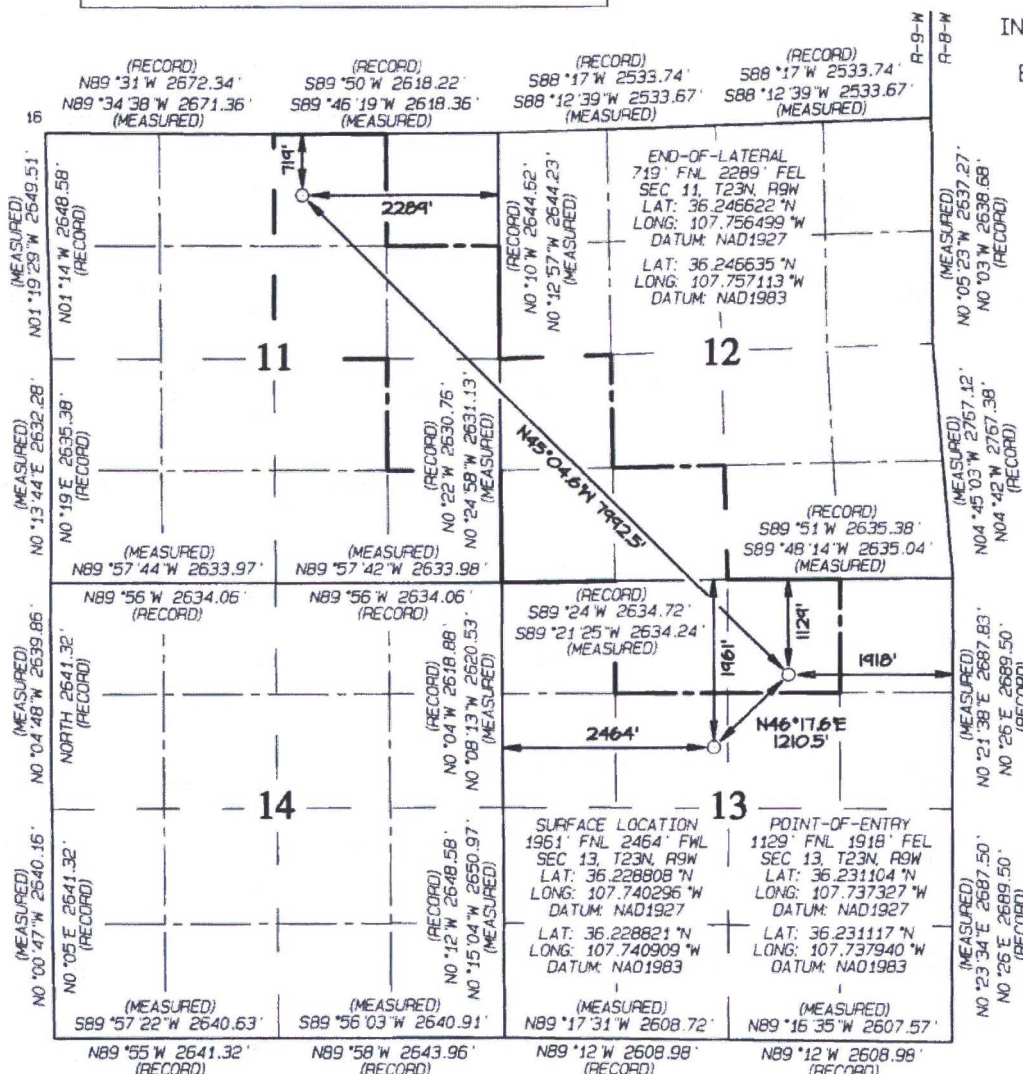
UL or lot no.	Section	Township	Range	Lot Idn	Feet from the	North/South line	Feet from the	East/West line	County
F	13	23N	9W		1961	NORTH	2464	WEST	SAN JUAN

11 Bottom Hole Location If Different From Surface

UL or lot no.	Section	Township	Range	Lot Idn	Feet from the	North/South line	Feet from the	East/West line	County
B	11	23N	9W		719	NORTH	2289	EAST	SAN JUAN

*Dedicated Acres <b>360.00</b>	NW/4 NE/4, S/2 NE/4 NE/4 SE/4 - Section 11 NW/4 SW/4, S/2 SW/4 - Section 12 NE/4 NW/4, NW/4 NE/4 - Section 13	*Joint or Infill	*Consolidation Code	*Order No. <b>R-14051 - 12,807.24 Acres</b>
-----------------------------------	--	------------------	---------------------	--

NO ALLOWABLE WILL BE ASSIGNED  
TO THIS COMPLETION UNTIL ALL  
INTERESTS HAVE BEEN CONSOLIDATED  
OR A NON-STANDARD UNIT HAS  
BEEN APPROVED BY THE DIVISION



17 OPERATOR CERTIFICATION

I hereby certify that the information contained herein is true and complete to the best of my knowledge and belief, and that this organization either owns a working interest or unleased mineral interest in the land including the proposed bottom-hole location or has a right to drill this well at this location pursuant to a contract with an owner of such a mineral or working interest, or to a voluntary pooling agreement or a compulsory pooling order heretofore entered by the division.

Signature: *[Signature]* Date: **5/25/17**  
Printed Name: **Lacey Hanks**  
E-mail Address:

18 SURVEYOR CERTIFICATION

I hereby certify that the well location shown on this plat was plotted from field notes of actual surveys made by me or under my supervision, and that the same is true and correct to the best of my belief.

Date Revised: OCTOBER 24, 2016  
Survey Date: OCTOBER 23, 2015

Signature and Seal of Professional Surveyor



**JASON C. EDWARDS**

Certificate Number 15269



District I  
1625 N. French Drive, Hobbs, NM 88240  
Phone: (575) 393-6161 Fax: (575) 393-0720

District II  
811 S. First Street, Artesia, NM 88210  
Phone: (575) 748-1283 Fax: (575) 748-9720

District III  
1000 Rio Brazos Road, Aztec, NM 87410  
Phone: (505) 334-6178 Fax: (505) 334-6170

District IV  
1220 S. St. Francis Drive, Santa Fe, NM 87505  
Phone: (505) 476-3460 Fax: (505) 476-3462

State of New Mexico  
Energy, Minerals & Natural Resources Department

Form C-102  
Revised August 1, 2011

Submit one copy to  
Appropriate District Office

OIL CONSERVATION DIVISION  
1220 South St. Francis Drive  
Santa Fe, NM 87505

☐ AMENDED REPORT

WELL LOCATION AND ACREAGE DEDICATION PLAT

*API Number <b>30-045-35776</b>		*Pool Code <b>98157</b>		*Pool Name <b>LYBROOK MANCOS W</b>	
*Property Code <b>315 250</b>		*Property Name <b>W LYBROOK UNIT</b>			*Well Number <b>712H</b>
*GRID No. <b>120782</b>		*Operator Name <b>WPX ENERGY PRODUCTION, LLC</b>			*Elevation <b>6700'</b>

<sup>10</sup> Surface Location

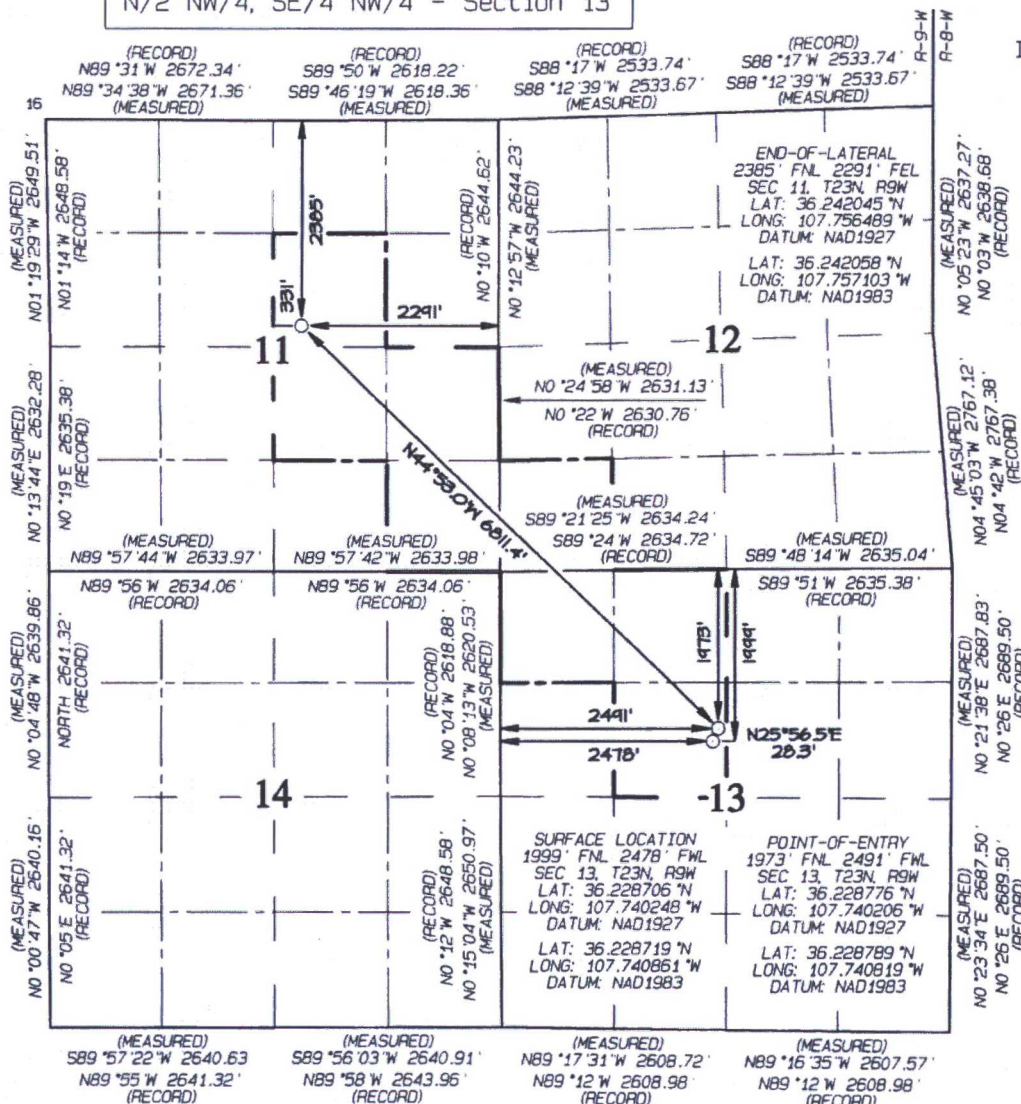
UL or lot no.	Section	Township	Range	Lot Idn	Feet from the	North/South line	Feet from the	East/West line	County
F	13	23N	9W		1999	NORTH	2478	WEST	SAN JUAN

<sup>11</sup> Bottom Hole Location If Different From Surface

UL or lot no.	Section	Township	Range	Lot Idn	Feet from the	North/South line	Feet from the	East/West line	County
G	11	23N	9W		2385	NORTH	2291	EAST	SAN JUAN

<sup>12</sup> Dedicated Acres <b>320.0</b>		SW/4 NE/4, N/2 SE/4 SE/4 SE/4 - Section 11 SW/4 SW/4 - Section 12 N/2 NW/4, SE/4 NW/4 - Section 13		<sup>13</sup> Joint or Infill	<sup>14</sup> Consolidation Code	<sup>15</sup> Order No. <b>R-14051 - 12,807.24 Acres</b>
---	--	---	--	-------------------------------	----------------------------------	---

NO ALLOWABLE WILL BE ASSIGNED  
TO THIS COMPLETION UNTIL ALL  
INTERESTS HAVE BEEN CONSOLIDATED  
OR A NON-STANDARD UNIT HAS  
BEEN APPROVED BY THE DIVISION



<sup>17</sup> OPERATOR CERTIFICATION

I hereby certify that the information contained herein is true and complete to the best of my knowledge and belief, and that this organization either owns a working interest or unleased mineral interest in the land including the proposed bottom-hole location or has a right to drill this well at this location pursuant to a contract with an owner of such a mineral or working interest, or to a voluntary pooling agreement or a compulsory pooling order heretofore entered by the division.

Signature: *[Signature]* Date: **5/25/17**  
Printed Name: **Jason C. Edwards**

E-mail Address

<sup>18</sup> SURVEYOR CERTIFICATION

I hereby certify that the well location shown on this plat was plotted from field notes of actual surveys made by me or under my supervision, and that the same is true and correct to the best of my belief.

Date Revised: MAY 9, 2016  
Survey Date: OCTOBER 23, 2015

Signature and Seal of Professional Surveyor



**JASON C. EDWARDS**

Certificate Number 15269



District I  
1625 N. French Drive, Hobbs, NM 88240  
Phone: (575) 393-6161 Fax: (575) 393-0720

District II  
811 S. First Street, Artesia, NM 88210  
Phone: (575) 748-1283 Fax: (575) 748-9720

District III  
1000 Rio Brazos Road, Aztec, NM 87410  
Phone: (505) 334-6178 Fax: (505) 334-6170

District IV  
1220 S. St. Francis Drive, Santa Fe, NM 87505  
Phone: (505) 476-3460 Fax: (505) 476-3462

State of New Mexico  
Energy, Minerals & Natural Resources Department

Form C-102  
Revised August 1, 2011

Submit one copy to  
Appropriate District Office

OIL CONSERVATION DIVISION

1220 South St. Francis Drive  
Santa Fe, NM 87505

☐ AMENDED REPORT

WELL LOCATION AND ACREAGE DEDICATION PLAT

*API Number <b>30-045-35802</b>		*Pool Code <b>98157</b>	*Pool Name <b>LYBROOK MANCOS W</b>
*Property Code <b>315250</b>	*Property Name <b>W LYBROOK UNIT</b>		*Well Number <b>714H</b>
*OGAID No. <b>120782</b>	*Operator Name <b>WPX ENERGY PRODUCTION, LLC</b>		*Elevation <b>6700'</b>

10 Surface Location

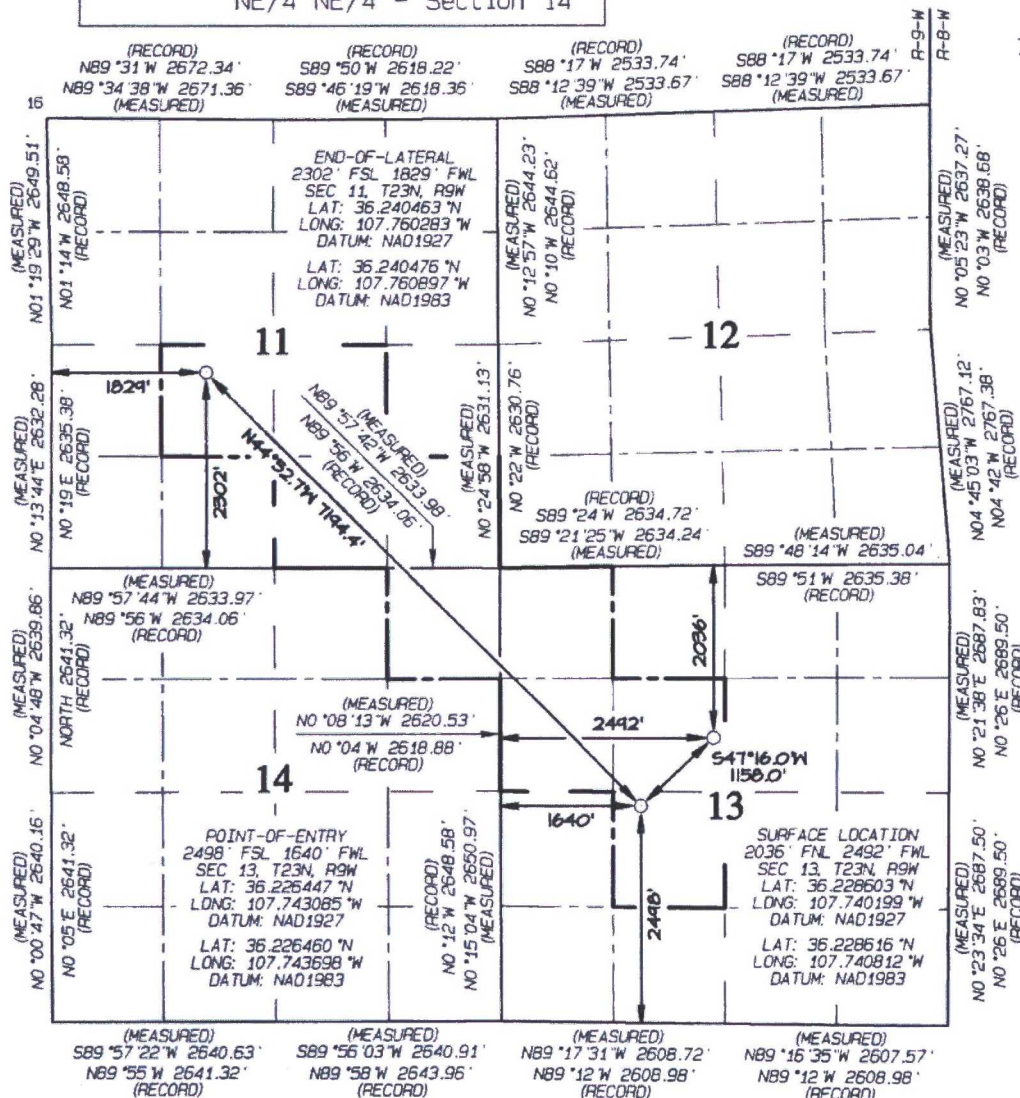
UL or lot no.	Section	Township	Range	Lot Idn	Feet from the	North/South line	Feet from the	East/West line	County
F	13	23N	9W		2036	NORTH	2492	WEST	SAN JUAN

11 Bottom Hole Location If Different From Surface

UL or lot no.	Section	Township	Range	Lot Idn	Feet from the	North/South line	Feet from the	East/West line	County
K	11	23N	9W		2302	SOUTH	1829	WEST	SAN JUAN

12 Dedicated Acres <b>360.00</b>		NE/4 SW/4, W/2 SE/4 SE/4 SE/4 - Section 11 W/2 NW/4, SE/4 NW/4 NE/4 SW/4 - Section 13 NE/4 NE/4 - Section 14	13 Joint or Infill	14 Consolidation Code	15 Order No. <b>R-14051 - 12,807.24 Acres</b>
-------------------------------------	--	--	--------------------	-----------------------	--

NO ALLOWABLE WILL BE ASSIGNED  
TO THIS COMPLETION UNTIL ALL  
INTERESTS HAVE BEEN CONSOLIDATED  
OR A NON-STANDARD UNIT HAS  
BEEN APPROVED BY THE DIVISION



17 OPERATOR CERTIFICATION

I hereby certify that the information contained herein is true and complete to the best of my knowledge and belief, and that this organization either owns a working interest or unleased mineral interest in the land including the proposed bottom-hole location or has a right to drill this well at this location pursuant to a contract with an owner of such a mineral or working interest, or to a voluntary pooling agreement or a compulsory pooling order heretofore entered by the division.

Signature: *[Signature]* Date: **5/28/17**  
Printed Name: **Lois M. Grando**

E-mail Address

18 SURVEYOR CERTIFICATION

I hereby certify that the well location shown on this plat was plotted from field notes of actual surveys made by me or under my supervision, and that the same is true and correct to the best of my belief.

Date Revised: **OCTOBER 24, 2016**  
Survey Date: **OCTOBER 23, 2015**

Signature and Seal of Professional Surveyor



**JASON C. EDWARDS**

Certificate Number **15269**



District I  
1625 N. French Drive, Hobbs, NM 88240  
Phone: (575) 393-6161 Fax: (575) 393-0720

District II  
811 S. First Street, Artesia, NM 88210  
Phone: (575) 748-1283 Fax: (575) 748-9720

District III  
1000 Rio Brazos Road, Aztec, NM 87410  
Phone: (505) 334-6178 Fax: (505) 334-6170

District IV  
1220 S. St. Francis Drive, Santa Fe, NM 87505  
Phone: (505) 476-3460 Fax: (505) 476-3462

State of New Mexico  
Energy, Minerals & Natural Resources Department

Form C-102  
Revised August 1, 2011

Submit one copy to  
Appropriate District Office

OIL CONSERVATION DIVISION

1220 South St. Francis Drive  
Santa Fe, NM 87505

☐ AMENDED REPORT

WELL LOCATION AND ACREAGE DEDICATION PLAT

*API Number <b>30-045-35804</b>		*Pool Code <b>98157</b>	*Pool Name <b>LYBROOK MANCOS W</b>
*Property Code <b>315250</b>	*Property Name <b>W LYBROOK UNIT</b>		*Well Number <b>750H</b>
*GRID No. <b>120782</b>	*Operator Name <b>WPX ENERGY PRODUCTION, LLC</b>		*Elevation <b>6700'</b>

10 Surface Location

UL or lot no.	Section	Township	Range	Lot Idn	Feet from the	North/South line	Feet from the	East/West line	County
F	13	23N	9W		1942	NORTH	2457	WEST	SAN JUAN

11 Bottom Hole Location If Different From Surface

UL or lot no.	Section	Township	Range	Lot Idn	Feet from the	North/South line	Feet from the	East/West line	County
I	19	23N	8W		2524	SOUTH	330	EAST	SAN JUAN

12 Dedicated Acres **480.15** NW/4 NE/4, S/2 NE/4  
NE/4 SE/4 - Section 13, T23N, R9W  
NW/4 SW/4, S/2 SW/4 - Section 18  
NE/4 NW/4, NW/4 NE/4, S/2 NE/4  
NE/4 SE/4 - Section 19, T23N, R8W

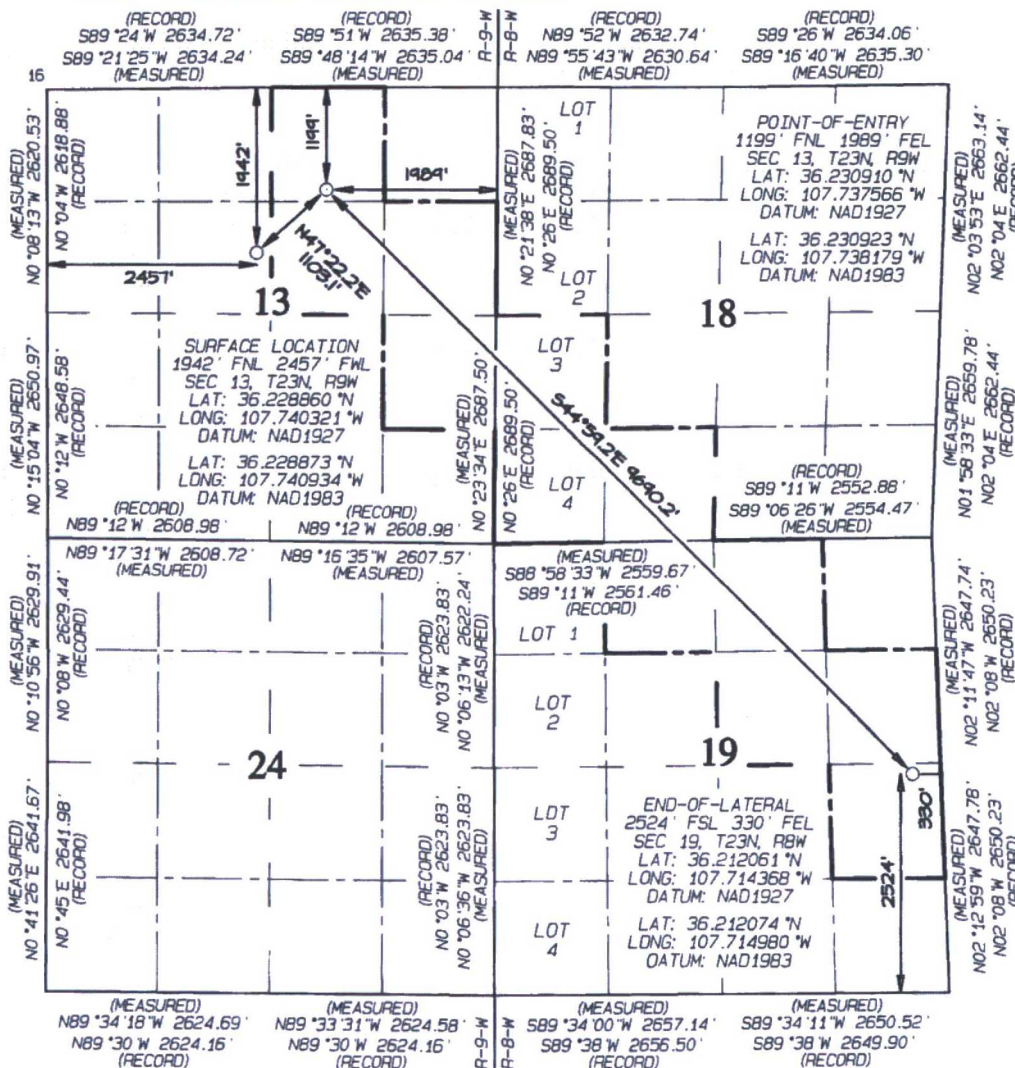
13 Joint or Infill

14 Consolidation Code

15 Order No.

**R-14051 - 12,807.24 Acres**

NO ALLOWABLE WILL BE ASSIGNED TO THIS COMPLETION  
UNTIL ALL INTERESTS HAVE BEEN CONSOLIDATED OR A  
NON-STANDARD UNIT HAS BEEN APPROVED BY THE DIVISION



17 OPERATOR CERTIFICATION

I hereby certify that the information contained herein is true and complete to the best of my knowledge and belief, and that this organization either owns a working interest or unleased mineral interest in the land including the proposed bottom-hole location or has a right to drill this well at this location pursuant to a contract with an owner of such a mineral or working interest, or to a voluntary pooling agreement or a compulsory pooling order heretofore entered by the division.

Signature: *[Signature]* Date: **5/25/17**  
Printed Name: **Jason C. Edwards**

E-mail Address

18 SURVEYOR CERTIFICATION

I hereby certify that the well location shown on this plat was plotted from field notes of actual surveys made by me or under my supervision, and that the same is true and correct to the best of my belief.

Date Revised: **OCTOBER 24, 2016**  
Survey Date: **OCTOBER 23, 2015**

Signature and Seal of Professional Surveyor



**JASON C. EDWARDS**

Certificate Number **15269**



District I  
1625 N. French Drive, Hobbs, NM 88240  
Phone: (575) 393-6161 Fax: (575) 393-0720  
District II  
811 S. First Street, Artesia, NM 88210  
Phone: (575) 748-1283 Fax: (575) 748-9720  
District III  
1000 Rio Brazos Road, Aztec, NM 87410  
Phone: (505) 334-6178 Fax: (505) 334-6170  
District IV  
1220 S. St. Francis Drive, Santa Fe, NM 87505  
Phone: (505) 476-3460 Fax: (505) 476-3462

State of New Mexico  
Energy, Minerals & Natural Resources Department

Form C-102  
Revised August 1, 2011

Submit one copy to  
Appropriate District Office

OIL CONSERVATION DIVISION  
1220 South St. Francis Drive  
Santa Fe, NM 87505

☐ AMENDED REPORT

WELL LOCATION AND ACREAGE DEDICATION PLAT

*API Number <b>30-045-35806</b>	*Pool Code <b>98157</b>	*Pool Name <b>LYBROOK MANCOS W</b>
*Property Code <b>315250</b>	*Property Name <b>W LYBROOK UNIT</b>	*Well Number <b>751H</b>
*GRID No. <b>120782</b>	*Operator Name <b>WPX ENERGY PRODUCTION, LLC</b>	*Elevation <b>6700'</b>

<sup>10</sup> Surface Location

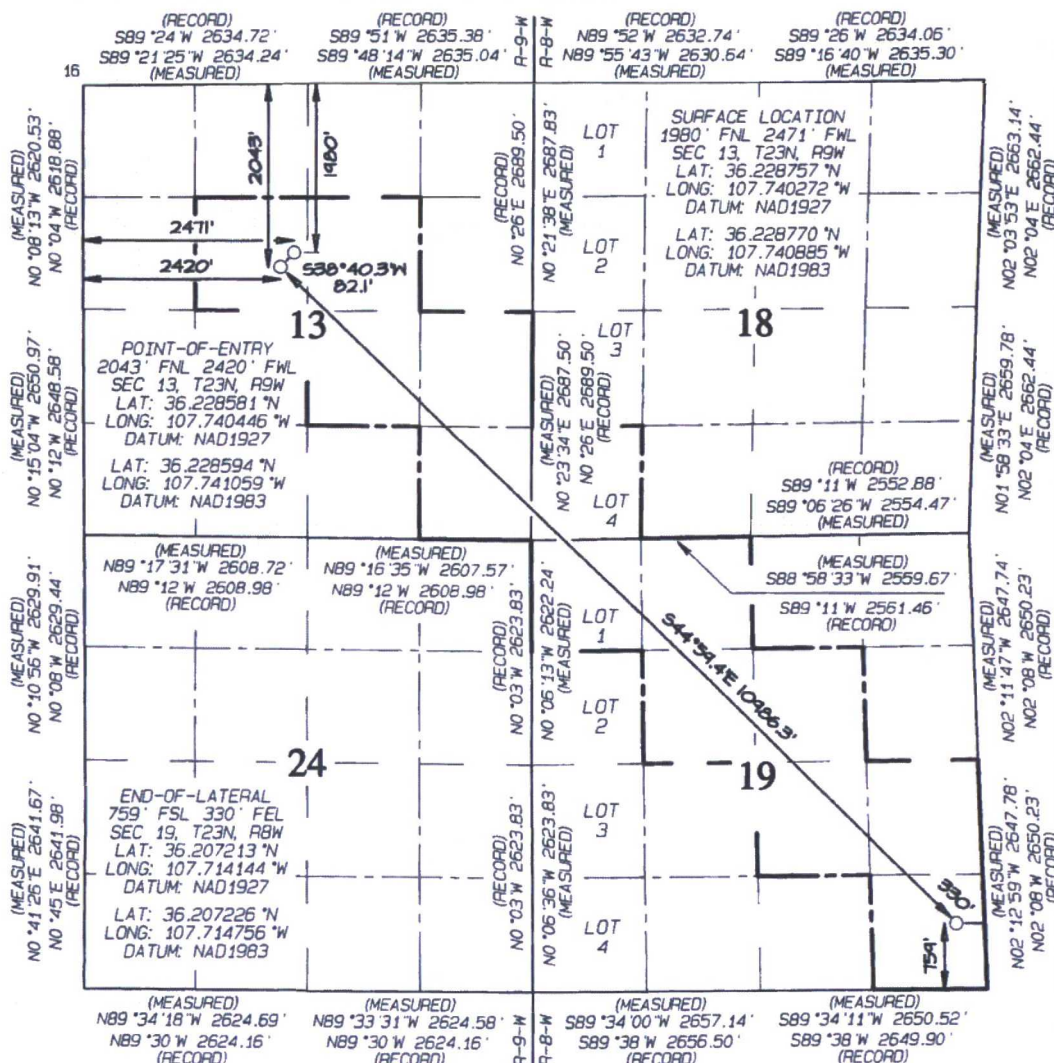
U. or lot no.	Section	Township	Range	Lot Idn	Feet from the	North/South line	Feet from the	East/West line	County
F	13	23N	9W		1980	NORTH	2471	WEST	SAN JUAN

<sup>11</sup> Bottom Hole Location If Different From Surface

U. or lot no.	Section	Township	Range	Lot Idn	Feet from the	North/South line	Feet from the	East/West line	County
P	19	23N	8W		759	SOUTH	330	EAST	SAN JUAN

<sup>12</sup> Dedicated Acres <b>520.42</b>	<b>N/2 NW/4, SE/4 NW/4 SW/4 NE/4, N/2 SE/4 SE/4 SE/4 - Section 19, T23N, R8W SW/4 SW/4 - Section 18, T23N, R8W SE/4 NW/4, SW/4 NE/4, N/2 SE/4 SE/4 SE/4 - Section 13, T23N, R9W</b>	<sup>13</sup> Joint or Infill	<sup>14</sup> Consolidation Code	<sup>15</sup> Order No. <b>R-14051 - 12,807.24 Acres</b>
--	---	-------------------------------	----------------------------------	---

NO ALLOWABLE WILL BE ASSIGNED TO THIS COMPLETION  
UNTIL ALL INTERESTS HAVE BEEN CONSOLIDATED OR A  
NON-STANDARD UNIT HAS BEEN APPROVED BY THE DIVISION



<sup>17</sup> OPERATOR CERTIFICATION

I hereby certify that the information contained herein is true and complete to the best of my knowledge and belief, and that this organization either owns a working interest or unleased mineral interest in the land including the proposed bottom-hole location or has a right to drill this well at this location pursuant to a contract with an owner of such a mineral or working interest, or to a voluntary pooling agreement or a compulsory pooling order heretofore entered by the division.

Signature: *[Signature]* Date: **5/25/17**  
Printed Name: **Carceyanillo**

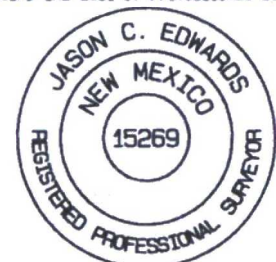
E-mail Address

<sup>18</sup> SURVEYOR CERTIFICATION

I hereby certify that the well location shown on this plat was plotted from field notes of actual surveys made by me or under my supervision, and that the same is true and correct to the best of my belief.

Date Revised: **OCTOBER 24, 2016**  
Survey Date: **OCTOBER 23, 2015**

Signature and Seal of Professional Surveyor



**JASON C. EDWARDS**  
Certificate Number 15269



District I  
1625 N. French Drive, Hobbs, NM 88240  
Phone: (575) 393-6161 Fax: (575) 393-0720

District II  
811 S. First Street, Artesia, NM 88210  
Phone: (575) 748-1283 Fax: (575) 748-9720

District III  
1000 Rio Brazos Road, Aztec, NM 87410  
Phone: (505) 334-6178 Fax: (505) 334-6170

District IV  
1220 S. St. Francis Drive, Santa Fe, NM 87505  
Phone: (505) 476-3460 Fax: (505) 476-3462

State of New Mexico  
Energy, Minerals & Natural Resources Department

Form C-102  
Revised August 1, 2011

Submit one copy to  
Appropriate District Office

OIL CONSERVATION DIVISION  
1220 South St. Francis Drive  
Santa Fe, NM 87505

☐ AMENDED REPORT

WELL LOCATION AND ACREAGE DEDICATION PLAT

*API Number <b>30-045-35805</b>		*Pool Code <b>98157</b>	*Pool Name <b>LYBROOK MANCOS W</b>
*Property Code <b>315250</b>	*Property Name <b>W LYBROOK UNIT</b>		*Well Number <b>752H</b>
*OGRID No. <b>120782</b>	*Operator Name <b>WPX ENERGY PRODUCTION, LLC</b>		*Elevation <b>6700'</b>

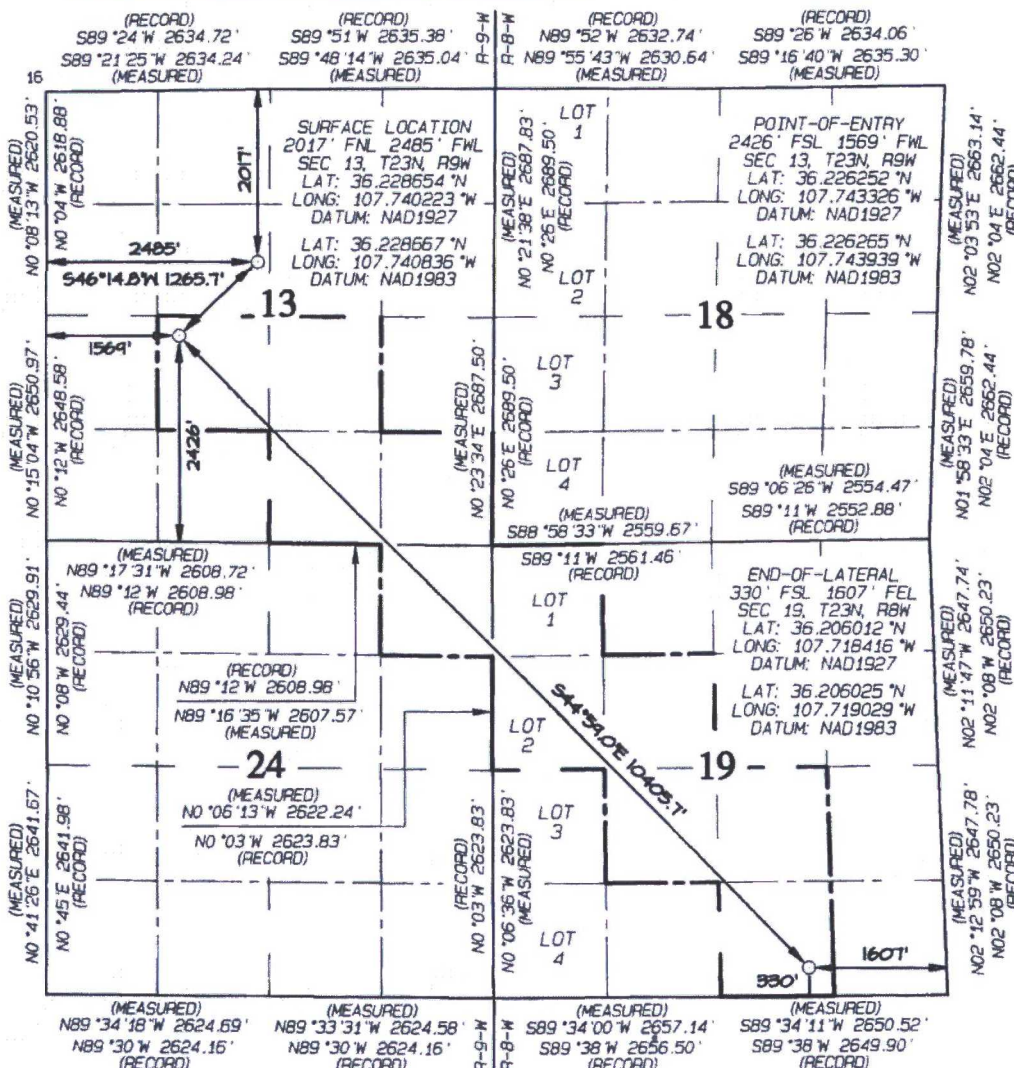
<sup>10</sup> Surface Location

UL or lot no.	Section	Township	Range	Lot Idn	Feet from the	North/South line	Feet from the	East/West line	County
F	13	23N	9W		2017	NORTH	2485	WEST	SAN JUAN

<sup>11</sup> Bottom Hole Location If Different From Surface

UL or lot no.	Section	Township	Range	Lot Idn	Feet from the	North/South line	Feet from the	East/West line	County
0	19	23N	8W		330	SOUTH	1607	EAST	SAN JUAN

<sup>12</sup> Dedicated Acres <b>440.49 NE/4 SW/4, W/2 SE/4 SE/4 SE/4 - Section 13, T23N, R9W W/2 NW/4, SE/4 NW/4, NE/4 SW/4 W/2 SE/4 - Section 19, T23N, R8W NE/4 NE/4 - Section 24, T23N, R9W</b>		<sup>13</sup> Joint or Infill 	<sup>14</sup> Consolidation Code 	<sup>15</sup> Order No. <b>R-14051 - 12,807.24 Acres</b>
NO ALLOWABLE WILL BE ASSIGNED TO THIS COMPLETION UNTIL ALL INTERESTS HAVE BEEN CONSOLIDATED OR A NON-STANDARD UNIT HAS BEEN APPROVED BY THE DIVISION				



<sup>17</sup> OPERATOR CERTIFICATION

I hereby certify that the information contained herein is true and complete to the best of my knowledge and belief, and that this organization either owns a working interest or unleased mineral interest in the land including the proposed bottom-hole location or has a right to drill this well at this location pursuant to a contract with an owner of such a mineral or working interest, or to a voluntary pooling agreement or a compulsory pooling order heretofore entered by the division.

Signature: *[Signature]* Date: **5/25/17**  
Printed Name: **Jason C. Edwards**

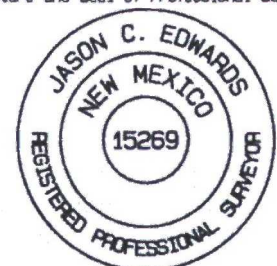
E-mail Address:

<sup>18</sup> SURVEYOR CERTIFICATION

I hereby certify that the well location shown on this plat was plotted from field notes of actual surveys made by me or under my supervision, and that the same is true and correct to the best of my belief.

Date Revised: OCTOBER 24, 2016  
Survey Date: OCTOBER 23, 2015

Signature and Seal of Professional Surveyor



**JASON C. EDWARDS**

Certificate Number 15269



Submit one copy to  
Appropriate District Office

## OIL CONSERVATION DIVISION

1220 South St. Francis Drive  
Santa Fe, NM 87505

☐ AMENDED REPORT

## WELL LOCATION AND ACREAGE DEDICATION PLAT

<sup>1</sup> API Number 30-045-35813		<sup>2</sup> Pool Code 98157	<sup>3</sup> Pool Name LYBROOK MANCOS W
<sup>4</sup> Property Code 315250	<sup>5</sup> Property Name W LYBROOK UNIT		<sup>6</sup> Well Number 716H
<sup>7</sup> OGRID No. 120782	<sup>8</sup> Operator Name WPX ENERGY PRODUCTION, LLC		<sup>9</sup> Elevation 6719'

<sup>10</sup> Surface Location

UL or lot no.	Section	Township	Range	Lot Idn	Feet from the	North/South line	Feet from the	East/West line	County
I	14	23N	9W		1835	SOUTH	624	EAST	SAN JUAN

<sup>11</sup> Bottom Hole Location If Different From Surface

UL or lot no.	Section	Township	Range	Lot Idn	Feet from the	North/South line	Feet from the	East/West line	County
L	11	23N	9W		2179	SOUTH	330	WEST	SAN JUAN

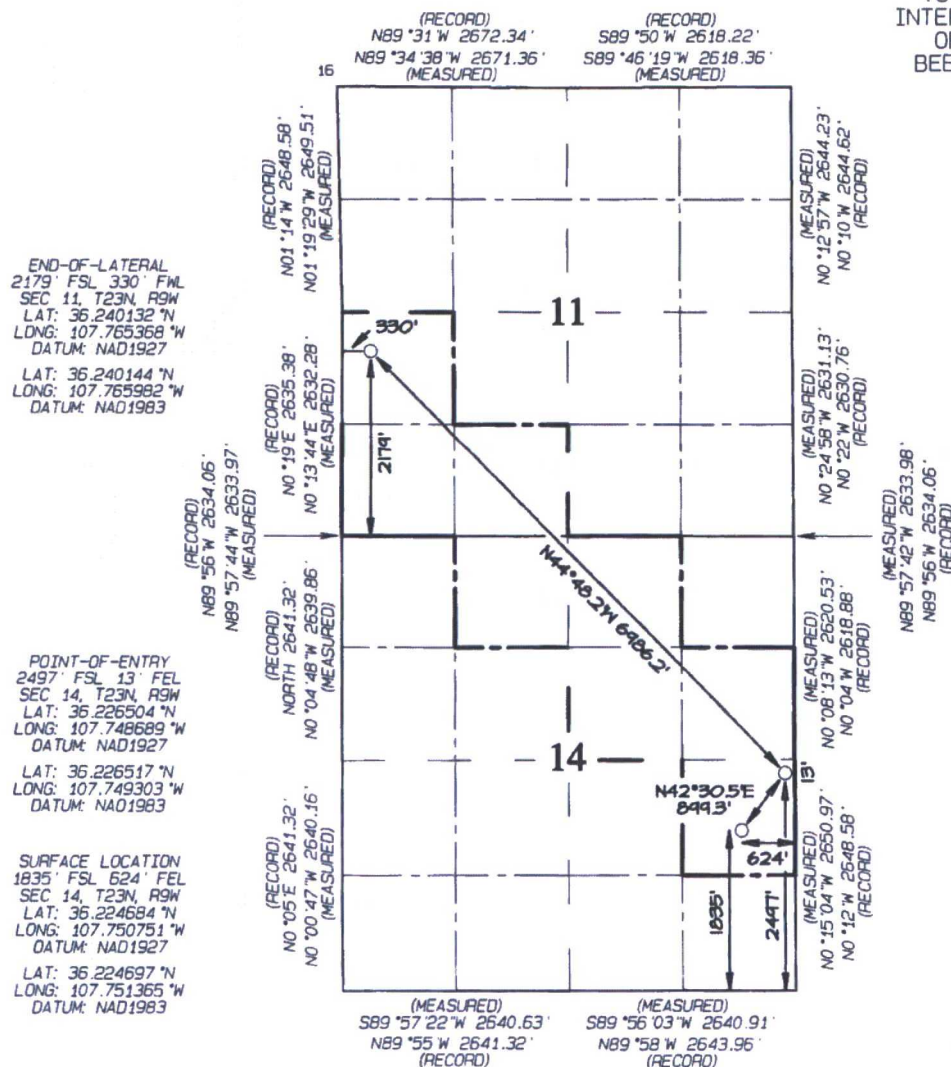
12 Dedicated Acres 320.0  
NW/4 SW/4, S/2 SW/4 - Section 11  
NE/4 NW/4, W/2 NE/4  
SE/4 NE/4, NE/4 SE/4 - Section 14

<sup>13</sup> Joint or Infill<sup>14</sup> Consolidation Code

15	Order No.
----	-----------

R-14051 - 12.807.24 Acres

NO ALLOWABLE WILL BE ASSIGNED  
TO THIS COMPLETION UNTIL ALL  
INTERESTS HAVE BEEN CONSOLIDATED  
OR A NON-STANDARD UNIT HAS  
BEEN APPROVED BY THE DIVISION



**17 OPERATOR CERTIFICATION**

I hereby certify that the information contained herein is true and complete to the best of my knowledge and belief, and that this organization either owns a working interest or unleased mineral interest in the land including the proposed bottom-hole location or has a right to drill this well at this location pursuant to a contract or an agreement involving a mineral working interest or to a voluntary pooling agreement or a compulsory pooling order heretofore entered by the division.

Signature \_\_\_\_\_

Date \_\_\_\_\_

Printed Name \_\_\_\_\_

E-mail Address

## 18 SURVEYOR CERTIFICATION

I hereby certify that the well location shown on this plat was plotted from field notes of actual surveys made by me or under my supervision, and that the same is true and correct to the best of my belief.

Date Revised: OCTOBER 28, 2016  
Survey Date: SEPTEMBER 16, 2015

Signature and Seal of Professional Surveyor



JASON C. EDWARDS

Certificate Number

15269



District I  
1625 N. French Drive, Hobbs, NM 88240  
Phone: (575) 393-6161 Fax: (575) 393-0720

District II  
811 S. First Street, Artesia, NM 88210  
Phone: (575) 748-1283 Fax: (575) 748-9720

District III  
1000 Rio Brazos Road, Aztec, NM 87410  
Phone: (505) 334-6178 Fax: (505) 334-6170

District IV  
1220 S. St. Francis Drive, Santa Fe, NM 87505  
Phone: (505) 476-3460 Fax: (505) 476-3462

State of New Mexico  
Energy, Minerals & Natural Resources Department

Form C-102  
Revised August 1, 2011

Submit one copy to  
Appropriate District Office

OIL CONSERVATION DIVISION  
1220 South St. Francis Drive  
Santa Fe, NM 87505

☐ AMENDED REPORT

WELL LOCATION AND ACREAGE DEDICATION PLAT

*API Number <b>30-045-35774</b>	*Pool Code <b>98157</b>	*Pool Name <b>LYBROOK MANCOS W</b>
*Property Code <b>315250</b>	*Property Name <b>W LYBROOK UNIT</b>	*Well Number <b>718H</b>
*GRID No. <b>120782</b>	*Operator Name <b>WPX ENERGY PRODUCTION, LLC</b>	*Elevation <b>6719'</b>

<sup>10</sup> Surface Location

UL or lot no.	Section	Township	Range	Lot Idn	Feet from the	North/South line	Feet from the	East/West line	County
I	14	23N	9W		1824	SOUTH	607	EAST	SAN JUAN

<sup>11</sup> Bottom Hole Location If Different From Surface

UL or lot no.	Section	Township	Range	Lot Idn	Feet from the	North/South line	Feet from the	East/West line	County
M	11	23N	9W		483	SOUTH	330	WEST	SAN JUAN

<sup>12</sup> Dedicated Acres <b>280.00</b>	<b>SW/4 SW/4 - Section 11</b> <b>N/2 NW/4, SE/4 NW/4</b> <b>SW/4 NE/4, N/2 SE/4 Section 14</b>	<sup>13</sup> Joint or Infill	<sup>14</sup> Consolidation Code	<sup>15</sup> Order No. <b>R-14051 - 12,807.24 Acres</b>
--	--	-------------------------------	----------------------------------	---

NO ALLOWABLE WILL BE ASSIGNED  
TO THIS COMPLETION UNTIL ALL  
INTERESTS HAVE BEEN CONSOLIDATED  
OR A NON-STANDARD UNIT HAS  
BEEN APPROVED BY THE DIVISION

END-OF-LATERAL  
483' FSL 330' FWL  
SEC 11, T23N, R9W  
LAT: 36.235472°N  
LONG: 107.765395°W  
DATUM: NAD1927

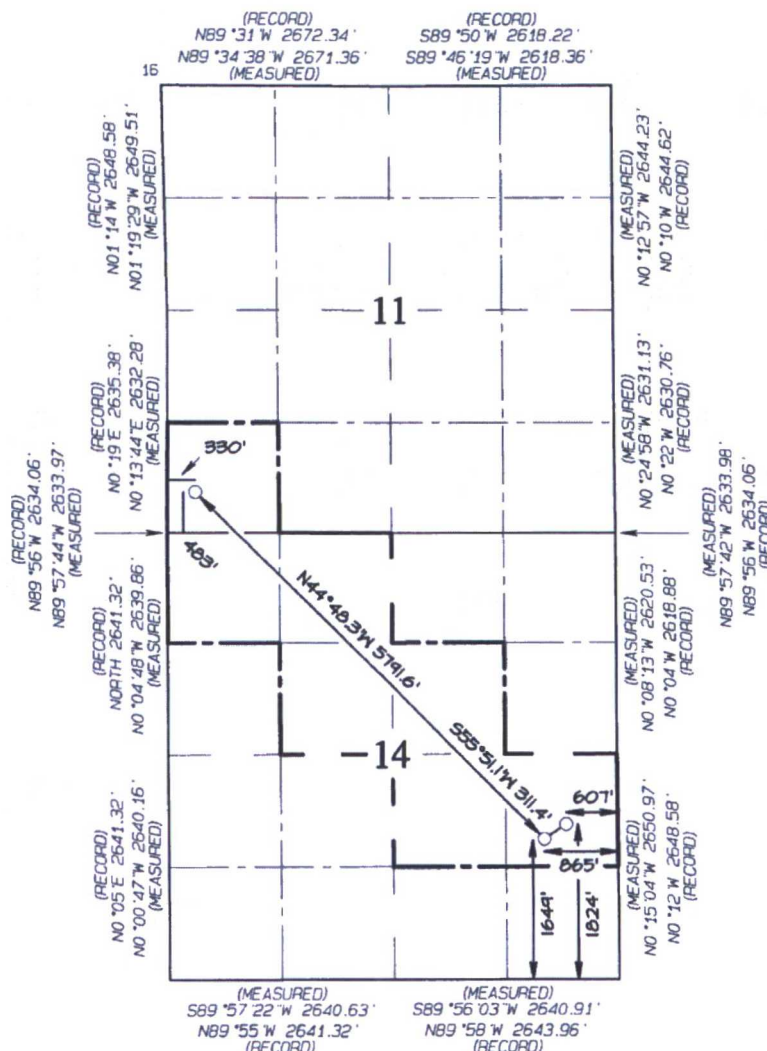
LAT: 36.235485°N  
LONG: 107.766009°W  
DATUM: NAD1983

POINT-OF-ENTRY  
1649' FSL 865' FEL  
SEC 14, T23N, R9W  
LAT: 36.224175°N  
LONG: 107.751569°W  
DATUM: NAD1927

LAT: 36.224188°N  
LONG: 107.752182°W  
DATUM: NAD1983

SURFACE LOCATION  
1824' FSL 607' FEL  
SEC 14, T23N, R9W  
LAT: 36.224655°N  
LONG: 107.750694°W  
DATUM: NAD1927

LAT: 36.224668°N  
LONG: 107.751308°W  
DATUM: NAD1983



<sup>17</sup> OPERATOR CERTIFICATION  
I hereby certify that the information contained herein is true and complete to the best of my knowledge and belief, and that this organization either owns a working interest, or unleased mineral interest in the land including the proposed bottom-hole location or has a right to drill this well at this location pursuant to a contract with an owner of such a mineral or working interest, or to a voluntary pooling agreement or a compulsory pooling order heretofore entered by the division.

Signature: *[Signature]* Date: *5/28/17*  
Printed Name: *[Name]*

E-mail Address

<sup>18</sup> SURVEYOR CERTIFICATION

I hereby certify that the well location shown on this plat was plotted from field notes of actual surveys made by me or under my supervision, and that the same is true and correct to the best of my belief.

Date Revised: APRIL 25, 2016  
Survey Date: SEPTEMBER 16, 2015

Signature and Seal of Professional Surveyor



**JASON C. EDWARDS**  
Certificate Number 15269



District I  
1625 N. French Drive, Hobbs, NM 88240  
Phone: (575) 393-6161 Fax: (575) 393-0720

District II  
811 S. First Street, Artesia, NM 88210  
Phone: (575) 748-1283 Fax: (575) 748-9720

District III  
1000 Rio Brazos Road, Aztec, NM 87410  
Phone: (505) 334-6178 Fax: (505) 334-6170

District IV  
1220 S. St. Francis Drive, Santa Fe, NM 87505  
Phone: (505) 476-3460 Fax: (505) 476-3462

State of New Mexico  
Energy, Minerals & Natural Resources Department

Form C-102  
Revised August 1, 2011

Submit one copy to  
Appropriate District Office

OIL CONSERVATION DIVISION  
1220 South St. Francis Drive  
Santa Fe, NM 87505

☐ AMENDED REPORT

WELL LOCATION AND ACREAGE DEDICATION PLAT

*API Number <b>30-045-35812</b>		*Pool Code <b>98157</b>	*Pool Name LYBROOK MANCOS W
*Property Code <b>315250</b>	*Property Name W LYBROOK UNIT		*Well Number 719H
*OGRIID No. 120782	*Operator Name WPX ENERGY PRODUCTION, LLC		*Elevation 6719'

<sup>10</sup> Surface Location

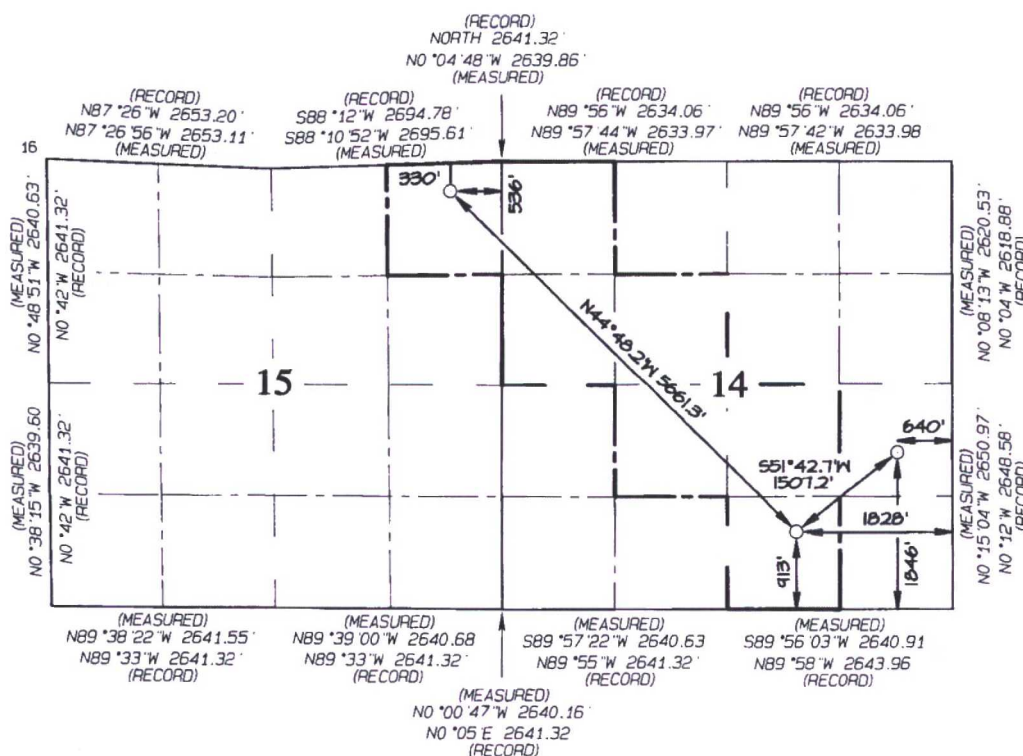
UL or lot no.	Section	Township	Range	Lot Idn	Feet from the	North/South line	Feet from the	East/West line	County
I	14	23N	9W		1846	SOUTH	640	EAST	SAN JUAN

<sup>11</sup> Bottom Hole Location If Different From Surface

UL or lot no.	Section	Township	Range	Lot Idn	Feet from the	North/South line	Feet from the	East/West line	County
A	15	23N	9W		330	NORTH	536	EAST	SAN JUAN

<sup>12</sup> Dedicated Acres 280.00	NE/4 NE/4 - Section 15 NW/4 NW/4, S/2 NW/4 NE/4 SW/4, W/2 SE/4 - Section 14	<sup>13</sup> Joint or Infill	<sup>14</sup> Consolidation Code	<sup>15</sup> Order No. R-14051 - 12,807.24 Acres
---	---	-------------------------------	----------------------------------	--

NO ALLOWABLE WILL BE ASSIGNED TO THIS COMPLETION  
UNTIL ALL INTERESTS HAVE BEEN CONSOLIDATED OR A  
NON-STANDARD UNIT HAS BEEN APPROVED BY THE DIVISION



END-OF-LATERAL  
330' FNL 536' FEL  
SEC. 15, T23N, R9W  
LAT: 36.233194°N  
LONG: 107.768337°W  
DATUM: NAD1927

LAT: 36.233207°N  
LONG: 107.768951°W  
DATUM: NAD1983

POINT-OF-ENTRY  
913 FSL 1828' FEL  
SEC. 14, T23N, R9W  
LAT: 36.222151°N  
LONG: 107.754821°W  
DATUM: NAD1927

LAT: 36.222164°N  
LONG: 107.755435°W  
DATUM: NAD1983

SURFACE LOCATION  
1846' FSL 640' FEL  
SEC. 14, T23N, R9W  
LAT: 36.224714°N  
LONG: 107.750808°W  
DATUM: NAD1927

LAT: 36.224727°N  
LONG: 107.751422°W  
DATUM: NAD1983

<sup>17</sup> OPERATOR CERTIFICATION

I hereby certify that the information contained herein is true and complete to the best of my knowledge and belief, and that this organization either owns a working interest or unleased mineral interest in the land including the proposed bottom-hole location or has a right to drill this well at this location pursuant to a contract with an owner of such a mineral or working interest, or to a voluntary pooling agreement or a compulsory pooling order heretofore entered by the division.

Signature: *Jason C. Edwards* Date: *5/25/17*  
Printed Name: *Jason C. Edwards*

<sup>18</sup> SURVEYOR CERTIFICATION

I hereby certify that the well location shown on this plat was plotted from field notes of actual surveys made by me or under my supervision, and that the same is true and correct to the best of my belief.

Date Revised: OCTOBER 28, 2016  
Survey Date: SEPTEMBER 16, 2015

Signature and Seal of Professional Surveyor



**JASON C. EDWARDS**  
Certificate Number 15269



District I  
1625 N. French Drive, Hobbs, NM 88240  
Phone: (575) 393-6161 Fax: (575) 393-0720

District II  
811 S. First Street, Artesia, NM 88210  
Phone: (575) 748-1283 Fax: (575) 748-9720

District III  
1000 Rio Brazos Road, Aztec, NM 87410  
Phone: (505) 334-6178 Fax: (505) 334-6170

District IV  
1220 S. St. Francis Drive, Santa Fe, NM 87505  
Phone: (505) 476-3460 Fax: (505) 476-3462

State of New Mexico  
Energy, Minerals & Natural Resources Department

Form C-102  
Revised August 1, 2011

Submit one copy to  
Appropriate District Office

OIL CONSERVATION DIVISION

1220 South St. Francis Drive  
Santa Fe, NM 87505

☐ AMENDED REPORT

WELL LOCATION AND ACREAGE DEDICATION PLAT

*API Number <b>30-045-35815</b>		*Pool Code <b>98157</b>	*Pool Name LYBROOK MANCOS W
*Property Code <b>315250</b>	*Property Name W LYBROOK UNIT		*Well Number 753H
*GRID No. 120782	*Operator Name WPX ENERGY PRODUCTION, LLC		*Elevation 6719'

<sup>10</sup> Surface Location

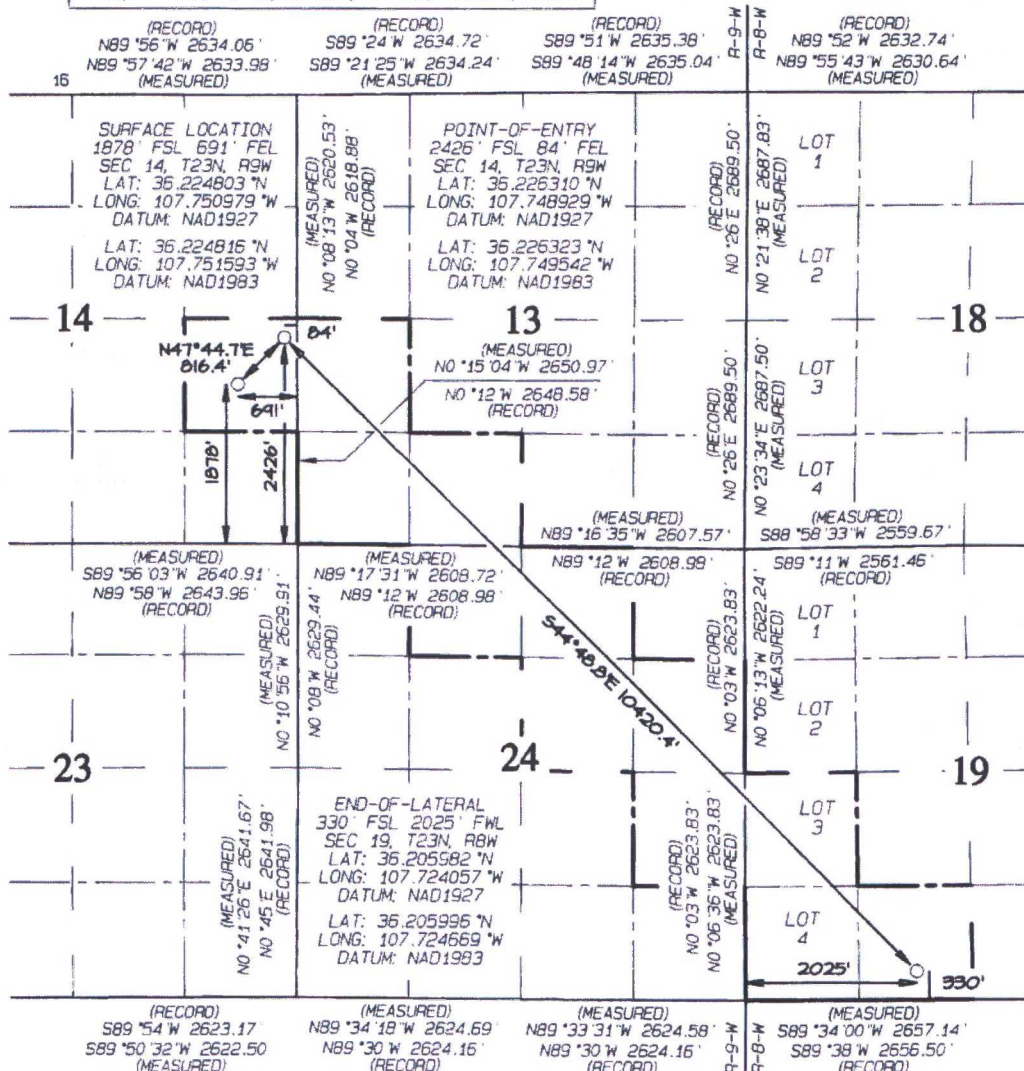
UL or lot no.	Section	Township	Range	Lot Idn	Feet from the	North/South line	Feet from the	East/West line	County
I	14	23N	9W		1878	SOUTH	691	EAST	SAN JUAN

<sup>11</sup> Bottom Hole Location If Different From Surface

UL or lot no.	Section	Township	Range	Lot Idn	Feet from the	North/South line	Feet from the	East/West line	County
N	19	23N	8W		330	SOUTH	2025	WEST	SAN JUAN

<sup>12</sup> Dedicated Acres 480.43 NW/4 SW/4, S/2 SW/4 - Section 13 NE/4 SE/4 - Section 14 NE/4 NW/4, W/2 NE/4, SE/4 NE/4 NE/4 SE/4 - Section 24, T23N, R9W NW/4 SW/4, S/2 SW/4-19, T23N, R8W		<sup>13</sup> Joint or Infill	<sup>14</sup> Consolidation Code	<sup>15</sup> Order No. R-14051 - 12,807.24 Acres
---	--	-------------------------------	----------------------------------	--

NO ALLOWABLE WILL BE ASSIGNED TO THIS COMPLETION  
UNTIL ALL INTERESTS HAVE BEEN CONSOLIDATED OR A  
NON-STANDARD UNIT HAS BEEN APPROVED BY THE DIVISION



**17 OPERATOR CERTIFICATION**  
I hereby certify that the information contained herein is true and complete to the best of my knowledge and belief, and that this organization either owns a working interest or unleased mineral interest in the land including the proposed bottom-hole location or has a right to drill this well at this location pursuant to a contract with an owner of such a mineral or working interest, or to a voluntary pooling agreement or a compulsory pooling order heretofore entered by the division.

Signature: *[Signature]* Date: 5/28/17  
Printed Name: Lacey Granillo

E-mail Address

**18 SURVEYOR CERTIFICATION**  
I hereby certify that the well location shown on this plat was plotted from field notes of actual surveys made by me or under my supervision, and that the same is true and correct to the best of my belief.

Date Revised: OCTOBER 28, 2016  
Survey Date: SEPTEMBER 16, 2015

Signature and Seal of Professional Surveyor



**JASON C. EDWARDS**  
Certificate Number 15269



District I  
1625 N. French Drive, Hobbs, NM 88240  
Phone: (575) 393-6161 Fax: (575) 393-0720

District II  
811 S. First Street, Artesia, NM 88210  
Phone: (575) 748-1283 Fax: (575) 748-9720

District III  
1000 Rio Brazos Road, Aztec, NM 87410  
Phone: (505) 334-6178 Fax: (505) 334-6170

District IV  
1220 S. St. Francis Drive, Santa Fe, NM 87505  
Phone: (505) 476-3460 Fax: (505) 476-3462

State of New Mexico  
Energy, Minerals & Natural Resources Department

Form C-102  
Revised August 1, 2011

Submit one copy to  
Appropriate District Office

OIL CONSERVATION DIVISION

1220 South St. Francis Drive  
Santa Fe, NM 87505

☐ AMENDED REPORT

WELL LOCATION AND ACREAGE DEDICATION PLAT

*API Number <b>30-045-35817</b>	*Pool Code <b>98157</b>	*Pool Name <b>LYBROOK MANCOS W</b>
*Property Code <b>315250</b>	*Property Name <b>W LYBROOK UNIT</b>	*Well Number <b>754H</b>
*OGRID No. <b>120782</b>	*Operator Name <b>WPX ENERGY PRODUCTION, LLC</b>	*Elevation <b>6719'</b>

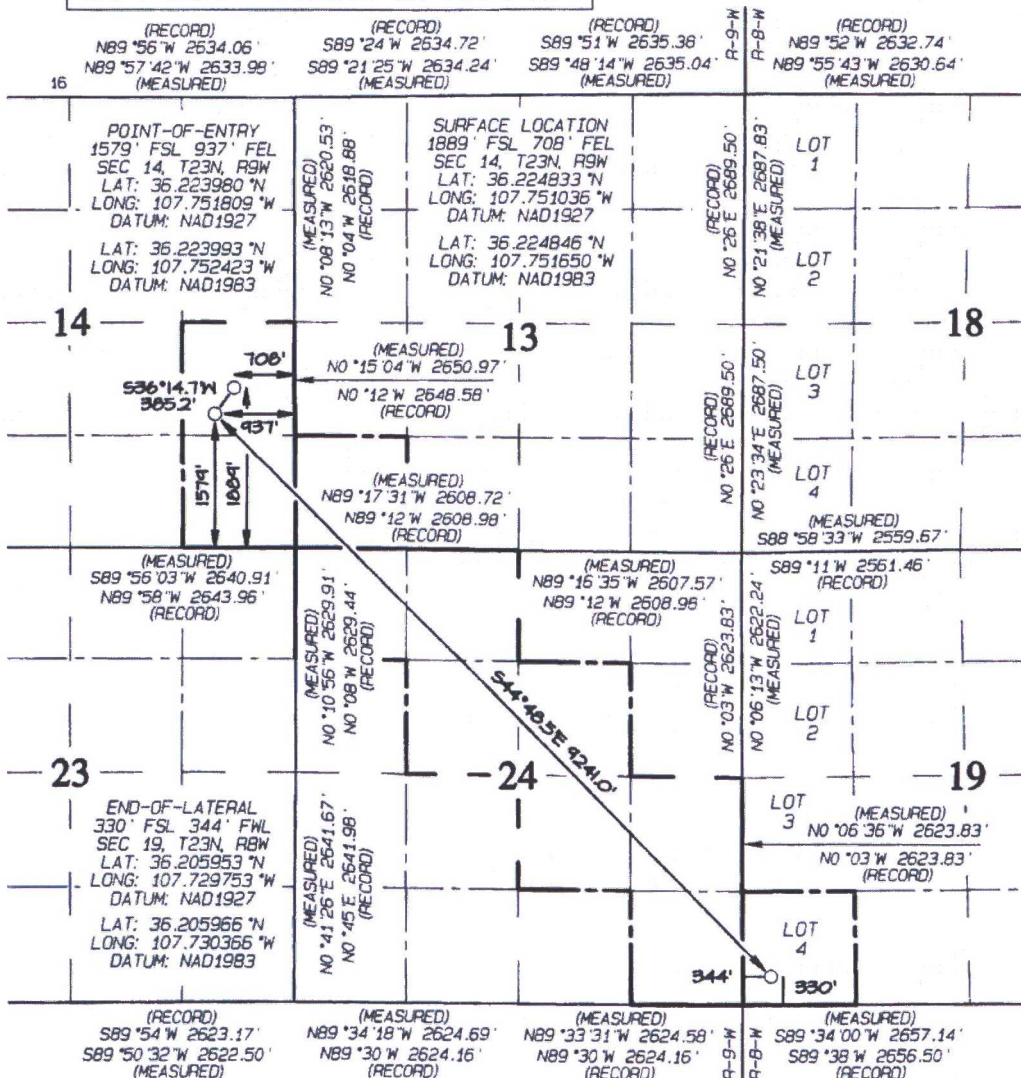
<sup>10</sup> Surface Location

UL or lot no.	Section	Township	Range	Lot Idn	Feet from the	North/South line	Feet from the	East/West line	County
I	14	23N	9W		1889	SOUTH	708	EAST	SAN JUAN

<sup>11</sup> Bottom Hole Location If Different From Surface

UL or lot no.	Section	Township	Range	Lot Idn	Feet from the	North/South line	Feet from the	East/West line	County
M	19	23N	8W	4	330	SOUTH	344	WEST	SAN JUAN

*Dedicated Acres <b>440.21</b>	E/2 SE/4 - Section 14 SW/4 SW/4 - Section 13 N/2 NW/4, SE/4 NW/4 SW/4 NE/4, N/2 SE/4 SE/4 SE/4 - Section 24, T23N, R9W SW/4 SW/4 - Section 19, T23N, R8W	*Joint or Infill	*Consolidation Code	*Order No. <b>R-14051 - 12,807.24 Acres</b>
NO ALLOWABLE WILL BE ASSIGNED TO THIS COMPLETION UNTIL ALL INTERESTS HAVE BEEN CONSOLIDATED OR A NON-STANDARD UNIT HAS BEEN APPROVED BY THE DIVISION				



<sup>17</sup> OPERATOR CERTIFICATION

I hereby certify that the information contained herein is true and complete to the best of my knowledge and belief, and that this organization either owns a working interest or unleased mineral interest in the land including the proposed bottom-hole location or has a right to drill this well at this location pursuant to a contract with an owner of such a mineral or working interest, or to a voluntary pooling agreement or a compulsory pooling order heretofore entered by the division.

Signature: *Jason C. Edwards* Date: *5/25/17*

Printed Name: *Jason C. Edwards*

E-mail Address: \_\_\_\_\_

<sup>18</sup> SURVEYOR CERTIFICATION

I hereby certify that the well location shown on this plat was plotted from field notes of actual surveys made by me or under my supervision, and that the same is true and correct to the best of my belief.

Date Revised: OCTOBER 28, 2016  
Survey Date: SEPTEMBER 16, 2015

Signature and Seal of Professional Surveyor



**JASON C. EDWARDS**  
Certificate Number 15269



District I  
1625 N. French Drive, Hobbs, NM 88240  
Phone: (575) 393-6161 Fax: (575) 393-0720

District II  
811 S. First Street, Artesia, NM 88210  
Phone: (575) 748-1283 Fax: (575) 748-9720

District III  
1000 Rio Brazos Road, Aztec, NM 87410  
Phone: (505) 334-6178 Fax: (505) 334-6170

District IV  
1220 S. St. Francis Drive, Santa Fe, NM 87505  
Phone: (505) 476-3460 Fax: (505) 476-3462

State of New Mexico  
Energy, Minerals & Natural Resources Department

Form C-102  
Revised August 1, 2011

Submit one copy to  
Appropriate District Office

OIL CONSERVATION DIVISION  
1220 South St. Francis Drive  
Santa Fe, NM 87505

☐ AMENDED REPORT

WELL LOCATION AND ACREAGE DEDICATION PLAT

*API Number <b>30-045-35816</b>		*Pool Code <b>98157</b>	*Pool Name <b>LYBROOK MANCOS W</b>
*Property Code <b>315250</b>	*Property Name <b>W LYBROOK UNIT</b>		*Well Number <b>755H</b>
*GRID No. <b>120782</b>	*Operator Name <b>WPX ENERGY PRODUCTION, LLC</b>		*Elevation <b>6719'</b>

<sup>10</sup> Surface Location

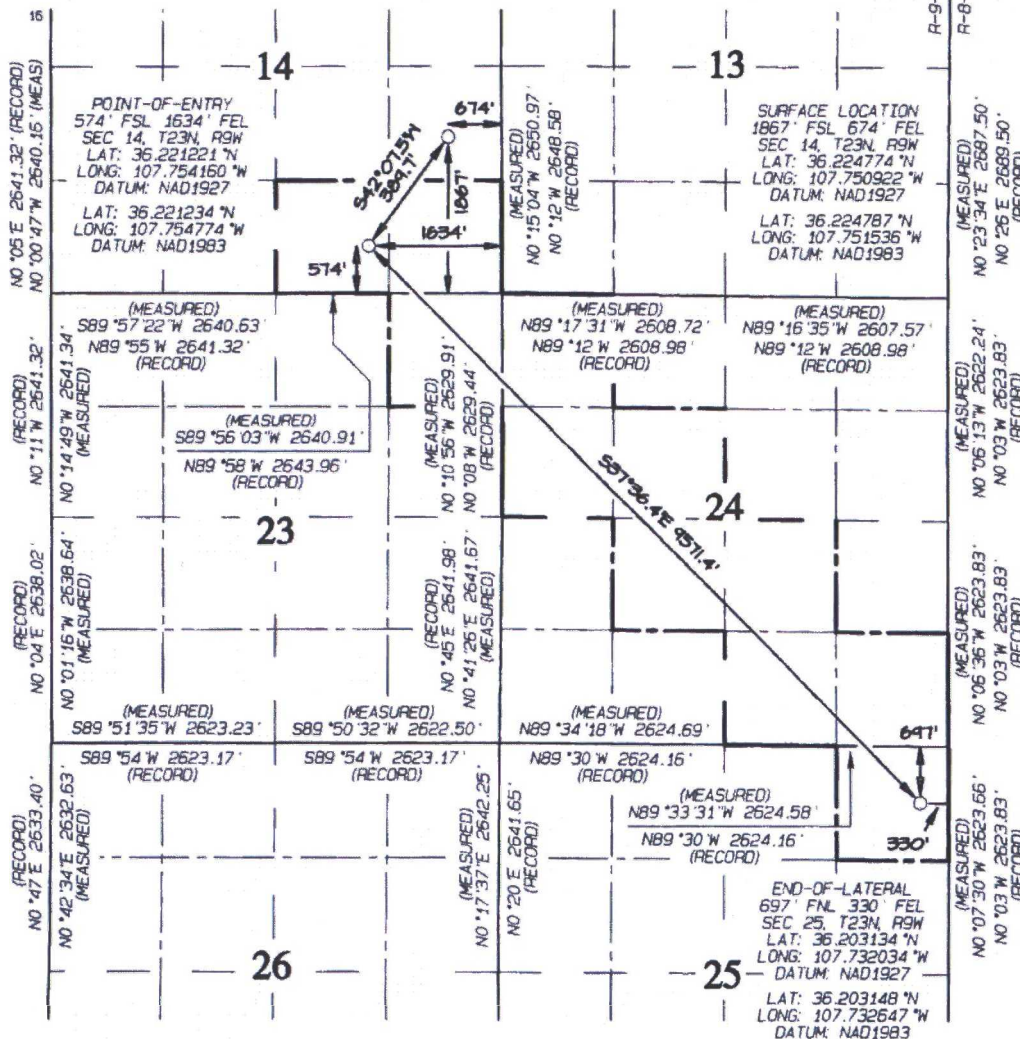
UL or lot no.	Section	Township	Range	Lot Idn	Feet from the	North/South line	Feet from the	East/West line	County
I	14	23N	9W		1867	SOUTH	674	EAST	SAN JUAN

<sup>11</sup> Bottom Hole Location If Different From Surface

UL or lot no.	Section	Township	Range	Lot Idn	Feet from the	North/South line	Feet from the	East/West line	County
A	25	23N	9W		697	NORTH	330	EAST	SAN JUAN

<sup>12</sup> Dedicated Acres <b>440.00</b>	<b>S/2 SE/4 - Section 14</b> <b>NE/4 NE/4 - Section 23</b> <b>W/2 NW/4, SE/4 NW/4, NE/4 SW/4</b> <b>W/2 SE/4, SE/4 SE/4 - Section 24</b> <b>NE/4 NE/4 - Section 25</b>	<sup>13</sup> Joint or Infill	<sup>14</sup> Consolidation Code	<sup>15</sup> Order No. <b>R-14051 - 12,807.24 Acres</b>
--	--	-------------------------------	----------------------------------	---

NO ALLOWABLE WILL BE ASSIGNED  
TO THIS COMPLETION UNTIL ALL  
INTERESTS HAVE BEEN CONSOLIDATED  
OR A NON-STANDARD UNIT HAS  
BEEN APPROVED BY THE DIVISION



<sup>17</sup> OPERATOR CERTIFICATION

I hereby certify that the information contained herein is true and complete to the best of my knowledge and belief, and that this organization either owns a working interest or unleased mineral interest in the land including the proposed bottom-hole location or has a right to drill this well at this location pursuant to a contract with an owner of such a mineral or working interest, or to a voluntary pooling agreement or a compulsory pooling order heretofore entered by the division.

Signature: *[Signature]* Date: *5/25/17*  
Printed Name: *Lance Granillo*

E-mail Address

<sup>18</sup> SURVEYOR CERTIFICATION

I hereby certify that the well location shown on this plat was plotted from field notes of actual surveys made by me or under my supervision and that the same is true and correct to the best of my belief.

Date Revised: OCTOBER 28, 2016  
Survey Date: SEPTEMBER 16, 2015

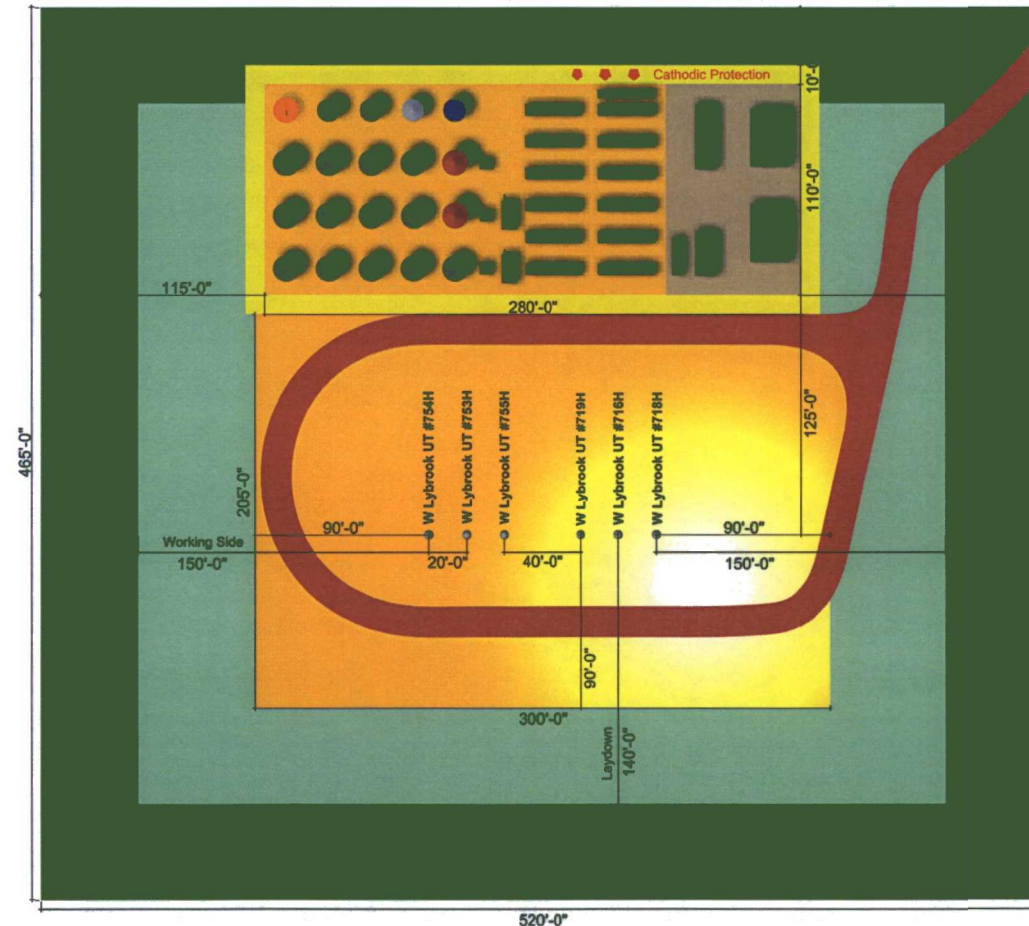
Signature and Seal of Professional Surveyor



**JASON C. EDWARDS**  
Certificate Number 15269



**WPX Energy Production, LLC**  
**W Lybrook Unit 716H, 718H, 719H, 753H, 754H & 755H Well Pad Diagram**  
 (Hosts Facilities for the W Lybrook UT 710H, 712H, 714H, 750H, 751H & 752H Wells)  
 Section 14, T23N, R9W, NMPM, San Juan County, New Mexico



**Lease # NMNM135216A**

**Wells On Location  
Produced Through Facilities**

W Lybrook UT No. 716H  
 1,835' FSL & 624' FEL  
 API # 30-045-35813

W Lybrook UT No. 718H  
 1,824' FSL & 607' FEL  
 API # 30-045-35774

W Lybrook UT No. 719H  
 1,846' FSL & 640' FEL  
 API # 30-045-35812

W Lybrook UT No. 753H  
 1,878' FSL & 691' FEL  
 API # 30-045-35815

W Lybrook UT No. 754H  
 1,889' FSL & 708' FEL  
 API # 30-045-35817

W Lybrook UT No. 755H  
 1,867' FSL & 674' FEL  
 API # 30-045-35816

**Wells Off Location  
Produced Through Facilities**

W Lybrook UT No. 710H  
 1,961' FNL & 2,464' FWL  
 API # 30-045-35803

W Lybrook UT No. 712H  
 1,999' FNL & 2,478' FWL  
 API # 30-045-35776

W Lybrook UT No. 714H  
 2,036' FNL & 2,492' FWL  
 API # 30-045-35802

W Lybrook UT No. 750H  
 1,942' FNL & 2,457' FWL  
 API # 30-045-35804

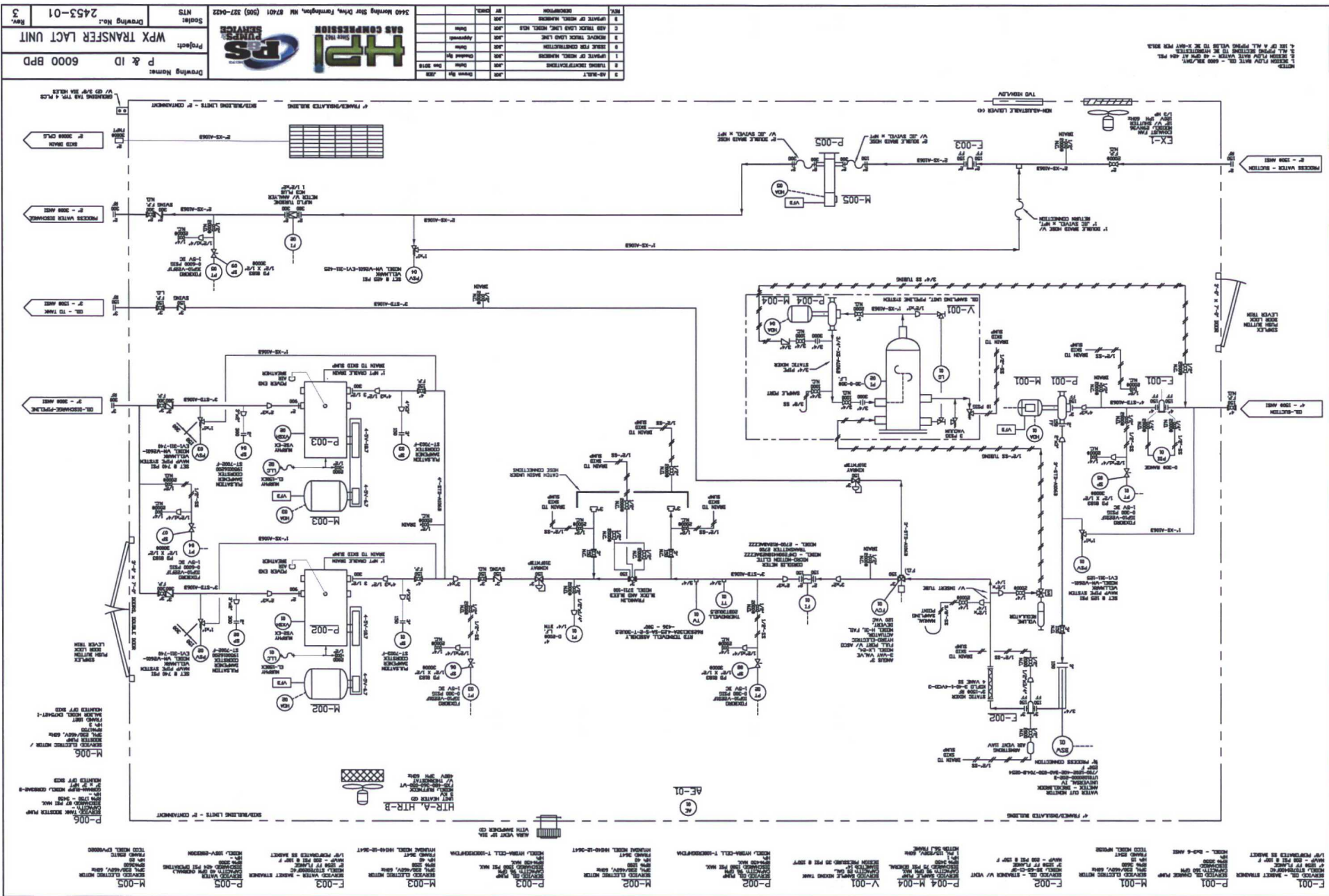
W Lybrook UT No. 751H  
 1,980' FNL & 2,471' FWL  
 API # 30-045-35806

W Lybrook UT No. 752H  
 2,017' FNL & 2,485' FWL  
 API # 30-045-35805

- BGT
- Water = 500 Bbl
- Water/Oil = 500 Bbl
- Oil = 500 Bbl
- Flash = 750 Bbl







1. DESIGN FLOW RATE CR. - 6000 GPM/DAY.  
2. DESIGN FLOW RATE WATER - 48 GPM AT 424 PSI.  
3. ALL PIPING TO BE HANDHEISTED.  
4. 10% OF A WT. PIPING TO BE X-RAY PER NORS.



## Casey Haga

---

**From:** Ernie Johnson <ernie.johnson@whiptailmidstream.com>  
**Sent:** Thursday, May 25, 2017 7:48 AM  
**To:** Felix, Andrea  
**Cc:** Casey Haga; Jordan, Robert; Riley, Heather; VanDenBerg, Randy  
**Subject:** RE: C-106 Letter from Transporter: WPX W Lybrook UT 716H pad

Andrea,

Thank you for the update. As the manager of EHS, and Regulatory & Permitting, for Whiptail Midstream, LLC, Whiptail Midstream agrees with the plan of allowing WPX Energy Production, LLC to utilize LACT units as the sales point on our pipeline system for the below listed facilities. So long as these LACT units will be proved per regulatory requirements.

**W. Lybrook Unit 716 Pad PIPELINE LACT UNIT**  
**WELLS TO BE SERVED BY PIPELINE LACT UNIT:**

- W Lybrook Unit 710H / API #30-045-35803 / UNIT F (SE/NW) Sec. 13, T23N, R9W, NMPM
- W Lybrook Unit 712H / API #30-045-35776 / UNIT F (SE/NW) Sec. 13, T23N, R9W, NMPM
- W Lybrook Unit 714H / API #30-045-35802 / UNIT F (SE/NW) Sec. 13, T23N, R9W, NMPM
- W Lybrook Unit 750H / API #30-045-35804 / UNIT F (SE/NW) Sec. 13, T23N, R9W, NMPM
- W Lybrook Unit 751H / API #30-045-35806 / UNIT F (SE/NW) Sec. 13, T23N, R9W, NMPM
- W Lybrook Unit 752H / API #30-045-35805 / UNIT F (SE/NW) Sec. 13, T23N, R9W, NMPM
- W Lybrook Unit 716H / API #30-045-35813 / UNIT I (NE/SE) Sec. 14, T23N, R9W, NMPM
- W Lybrook Unit 718H / API #30-045-35774 / UNIT I (NE/SE) Sec. 14, T23N, R9W, NMPM
- W Lybrook Unit 719H / API #30-045-35812 / UNIT I (NE/SE) Sec. 14, T23N, R9W, NMPM
- W Lybrook Unit 753H / API #30-045-35815 / UNIT I (NE/SE) Sec. 14, T23N, R9W, NMPM
- W Lybrook Unit 754H / API #30-045-35817 / UNIT I (NE/SE) Sec. 14, T23N, R9W, NMPM
- W Lybrook Unit 755H / API #30-045-35816 / UNIT I (NE/SE) Sec. 14, T23N, R9W, NMPM

If you have any questions please feel free to contact me.

Thank you,

Ernie Johnson  
HSE Manager  
Whiptail Midstream  
15 W. 6<sup>th</sup> Street, Suite 2901, Tulsa, OK 74119  
W: 918.289.2147  
[ernie.johnson@whiptailmidstream.com](mailto:ernie.johnson@whiptailmidstream.com)



*From receipt to delivery, the midstream partner you count on.*



**From:** Felix, Andrea [mailto:Andrea.Felix@wpxenergy.com]  
**Sent:** Wednesday, May 24, 2017 9:05 AM  
**To:** Ernie Johnson <ernie.johnson@whiptailmidstream.com>  
**Cc:** Casey Haga <caseyhaga@eis-llc.com>; Jordan, Robert <Robert.Jordan@wpxenergy.com>; Riley, Heather <Heather.Riley@wpxenergy.com>; VanDenBerg, Randy <RandyN.VanDenBerg@wpxenergy.com>  
**Subject:** C-106 Letter from Transporter: WPX W Lybrook UT 716H pad

Good morning Ernie,

WPX is working on the C-106 Letter from Transporter submittal to NMOCD for WPX W Lybrook Unit 716H. Please reply back to this email with your approval. Please remember NMOCD would also like to see that Ernie also manages the regulatory and permitting for Whiptail Midstream not only HSE.

WPX Energy Production, LLC is requesting approval from the transporter to utilize Pipeline Transfer LACT equipment on the W. Lybrook Unit 716 Pad. Product from the below listed wells would be produced through the LACT equipment, gathered through WPX pipeline, and transferred into Whiptail Midstream, LLC's (transporter) pipeline system through a check meter. Whiptail Midstream, LLC will be responsible for transporting WPX Energy Production, LLC's product to sales.

**W. Lybrook Unit 716 Pad PIPELINE LACT UNIT**  
**WELLS TO BE SERVED BY PIPELINE LACT UNIT:**

- W Lybrook Unit 710H / API #30-045-35803 / UNIT F (SE/NW) Sec. 13, T23N, R9W, NMPM
- W Lybrook Unit 712H / API #30-045-35776 / UNIT F (SE/NW) Sec. 13, T23N, R9W, NMPM
- W Lybrook Unit 714H / API #30-045-35802 / UNIT F (SE/NW) Sec. 13, T23N, R9W, NMPM
- W Lybrook Unit 750H / API #30-045-35804 / UNIT F (SE/NW) Sec. 13, T23N, R9W, NMPM
- W Lybrook Unit 751H / API #30-045-35806 / UNIT F (SE/NW) Sec. 13, T23N, R9W, NMPM
- W Lybrook Unit 752H / API #30-045-35805 / UNIT F (SE/NW) Sec. 13, T23N, R9W, NMPM
- W Lybrook Unit 716H / API #30-045-35813 / UNIT I (NE/SE) Sec. 14, T23N, R9W, NMPM
- W Lybrook Unit 718H / API #30-045-35774 / UNIT I (NE/SE) Sec. 14, T23N, R9W, NMPM
- W Lybrook Unit 719H / API #30-045-35812 / UNIT I (NE/SE) Sec. 14, T23N, R9W, NMPM
- W Lybrook Unit 753H / API #30-045-35815 / UNIT I (NE/SE) Sec. 14, T23N, R9W, NMPM
- W Lybrook Unit 754H / API #30-045-35817 / UNIT I (NE/SE) Sec. 14, T23N, R9W, NMPM
- W Lybrook Unit 755H / API #30-045-35816 / UNIT I (NE/SE) Sec. 14, T23N, R9W, NMPM

Thank you,

**Andrea Felix, RWA**  
Regulatory & Support Team Lead  
San Juan Basin  
Office: 505-333-1849  
Cell: 505-386-8205

**WPXENERGY.**

