

UNITED STATES **RECEIVED**
DEPARTMENT OF THE INTERIOR
BUREAU OF LAND MANAGEMENT **JUL 14 2017**

FORM APPROVED
OMB No. 1004-0137
Expires: January 31, 2018

SUNDRY NOTICES AND REPORTS ON WELLS
Do not use this form for proposals to drill or to re-enter an abandoned well. Use Form 3160-3 (APD) for such proposals.

5. Lease Serial No.
NMSF078362
6. If Indian, Allottee or Tribe Name

SUBMIT IN TRIPLICATE - Other instructions on page 2

1. Type of Well

☒ Oil Well ☐ Gas Well ☐ Other

2. Name of Operator

WPX Energy Production, LLC

3a. Address

PO Box 640 Aztec, NM 87410

3b. Phone No. (include area code)

505-333-1816

7. If Unit of CA/Agreement, Name and/or No.
NMNM-132829

8. Well Name and No.
NE CHACO COM #169H

9. API Well No.
30-039-31211

10. Field and Pool or Exploratory Area
Chaco Unit NE HZ (Oil)

4. Location of Well (Footage, Sec., T., R., M., or Survey Description)

SHL: 1524' FNL & 262' FWL SEC 12 23N 7W

BHL: 1819' FNL & 129' FWL SEC 11 23N 7W

11. Country or Parish, State
Rio Arriba, NM

12. CHECK THE APPROPRIATE BOX(ES) TO INDICATE NATURE OF NOTICE, REPORT OR OTHER DATA

TYPE OF SUBMISSION

☐ Notice of Intent
☒ Subsequent Report
☐ Final Abandonment Notice

TYPE OF ACTION

☐ Acidize ☐ Deepen ☐ Production (Start/Resume) ☐ Water ShutOff
☐ Alter Casing ☐ Hydraulic Fracturing ☐ Reclamation ☐ Well Integrity
☐ Casing Repair ☐ New Construction ☐ Recomplete ☐ Other Install
☐ Change Plans ☐ Plug and Abandon ☐ Temporarily Abandon Gas Lift
☐ Convert to Injection ☐ Plug Back ☐ Water Disposal

13. Describe Proposed or Completed Operation: Clearly state all pertinent details, including estimated starting date of any proposed work and approximate duration thereof. If the proposal is to deepen directionally or recomple horizontally, give subsurface locations and measured and true vertical depths of all pertinent markers and zones. Attach the Bond under which the work will be performed or provide the Bond No. on file with BLM/BIA. Required subsequent reports must be filed within 30 days following completion of the involved operations. If the operation results in a multiple completion or recomple in a new interval, a Form 3160-4 must be filed once testing has been completed. Final Abandonment Notices must be filed only after all requirements, including reclamation, have been completed and the operator has determined that the site is ready for final inspection.)

7/7/17-MIRU

7/10/17- TP=180#, CP=420#, bd to pit, pump 30 bbls prod water down csg & 10 bbls down tbg, NDT, pull tbg hanger, Release 7" AS1-X pkr, MU hanger & land tbg back, NU double BOP dressed w/ 2-7/8" rams & single BOP dressed w/ 2-3/8" rams, function tst BOP's. MU 2-7/8" pup into hanger, test 2-7/8" rams & seals to 1800 psi 10 min w/ no lk off, bleed off pressure, break out 2-7/8" pup, MU 2-7/8" x 2-3/8" x-o & 2-3/8" pup into hanger, test 2-3/8" pipe rams & seals to 1700 psi 10 min w/ no lk off, bleed off pressure-good. Pull tbg hgr, tally 2-7/8" tbg on TOOH, 41 jts tbg, GLV, 34 jts, GLV, 28 jts, GLV, 23 jts, GLV, 18 jts, GLV, 13 jts, GLV, 1 jt, 4' pup jt, on/off tool w/ 2.25 profile, 7" AS1-X pkr, 2-7/8" x 2-3/8" x-over, 10 jts 2-3/8" tbg, 1.87 XN-nipple, 1 jt 2-3/8", 1/2 mule shoe (LD 1 jt of 2-3/8" that was bent). TIH w/ BHA, prod tbg & GLV's spaced out per Priority procedure, EOT @ 5369'. SDFN

7/11/17- Continue to TIH w/ prod tbg. Land mixed string @ 5991'. 2-7/8" 6.5# J-55 eue, 2-7/8" 6.5# J-55 NU 10rd & 2-3/8" 4.7# J-55 eue. Gas lift: down w/ KB corr: 14.50 Tubing hanger, 15.30, 98 jts 2-7/8" 6.5# J-55 eue, 3064.57, GLV #4 / PTRO: 755#, 3068.67, 30 jts 2-7/8" 6.5# J-55 eue, 4018.41, GLV #3 / PTRO: 735#, 4022.51, 26 jts 2-7/8" 6.5# J-55 eue, 4856.49, GLV #2 / PTRO: 720#, 4860.59, 20 jts 2-7/8" 6.5# J-55 eue, 5500.39, 2-7/8 eue x 2-7/8 NU x-over, 5500.86, 5 jts 2-7/8" 6.5# J55 NU 10rd, 5666.63, 2.313 X-nipple NU 10rd, 5667.45, 2-7/8 NU 10rd x 2-3/8 eue x-over, 5667.92, 5 jts 2-3/8" 4.7# J-55 eue, 5823.55, GLV #1 / PTRO: 690#, 5827.65, On/Off tool w/ 1.81 F profile nipple 5829.30, AS1-X pkr set 5k tension (79 degrees), 5835.55, 4 jts 2-3/8" 4.7# J-55 eue, 5956.93, 1.78 R-nipple, 5957.85, 1 jt 2-3/8" 4.7# J-55 eue, 5987.90, 1/2 muleshoe (88 degrees) 7" 23# shoe @ 6113' MD, 4.5" 11.6# LT @ 5565' MD / shoe @ 10,594' MD, PBTD @ 10,510' MD, TVD 5514', Top perf 6122', bottom perf 10,418'. RDMD

14. I hereby certify that the foregoing is true and correct. Name (Printed/Typed)

Lacey Granillo

Title Permit Tech III

Signature

Date 7/13/17

THE SPACE FOR FEDERAL OR STATE OFFICE USE

Approved by

Title

Date

Conditions of approval, if any, are attached. Approval of this notice does not warrant or certify that the applicant holds legal or equitable title to those rights in the subject lease which would entitle the applicant to conduct operations thereon.

Office

Title 18 U.S.C Section 1001 and Title 43 U.S.C Section 1212, make it a crime for any person knowingly and willfully to make to any department or agency of the United States any false, fictitious or fraudulent statements or representations as to any matter within its jurisdiction.

NE Chaco COM #169H CHACO UNIT NE HZ OIL

(page 1)

Spud: 3/6/14

Completed: 5/5/14

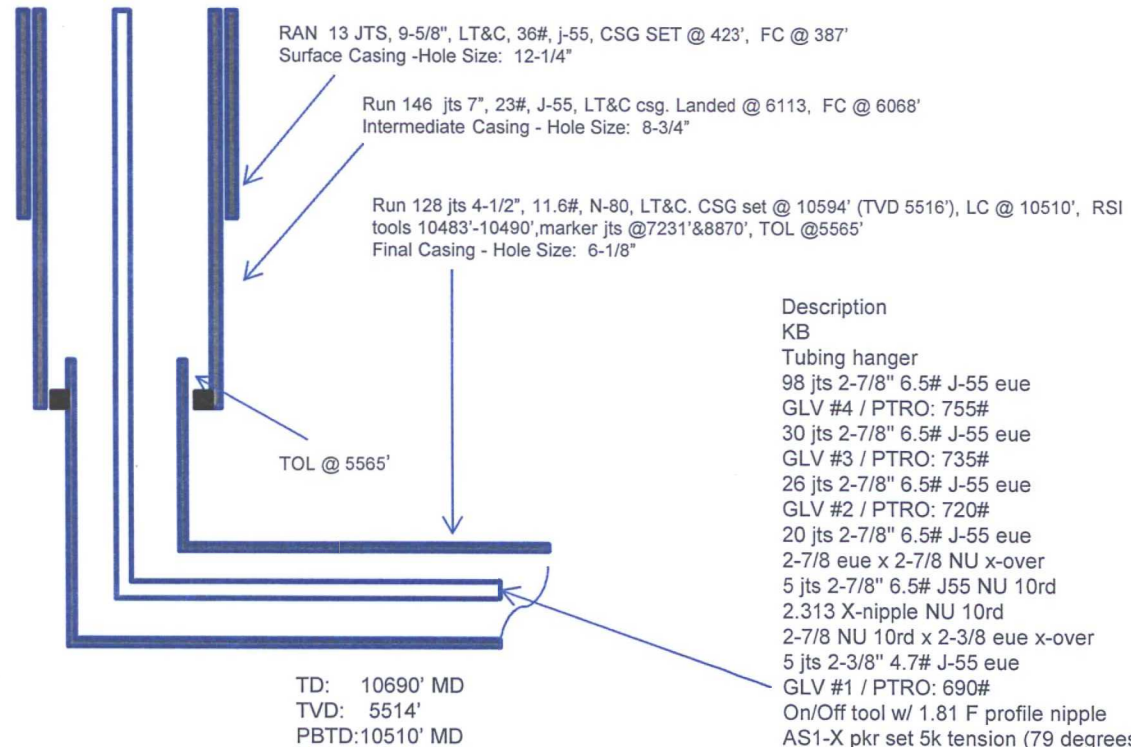
Current Gas lift: 7/11/17

SHL: 1524' FNL & 262' FWL
SW/4 NW/4 Section 12 (E), T23N, R7W

BHL: 1819' FNL & 129' FWL
SW/4 NW/4 Section 11 (E), T23N, R 7W

RIO ARRIBA., NM
Elevation: 7039'
API: 30-039-31211

Tops	MD	TVD
Ojo Alamo	1460'	1454'
Kirtland	1767'	1759'
Pictured Cliffs	2058'	2047'
Lewis	2170'	2159'
Chacra	2501'	2486'
Cliff House	3593'	3579'
Menefee	3623'	3609'
Point Lookout	4364'	4349'
Mancos	4566'	4552'
Gallup	4982'	4967'



Description	Depth
KB	14.50
Tubing hanger	15.30
98 jts 2-7/8" 6.5# J-55 eue	3064.57
GLV #4 / PTRO: 755#	3068.67
30 jts 2-7/8" 6.5# J-55 eue	4018.41
GLV #3 / PTRO: 735#	4022.51
26 jts 2-7/8" 6.5# J-55 eue	4856.49
GLV #2 / PTRO: 720#	4860.59
20 jts 2-7/8" 6.5# J-55 eue	5500.39
2-7/8 eue x 2-7/8 NU x-over	5500.86
5 jts 2-7/8" 6.5# J55 NU 10rd	5666.63
2.313 X-nipple NU 10rd	5667.45
2-7/8 NU 10rd x 2-3/8 eue x-over	5667.92
5 jts 2-3/8" 4.7# J-55 eue	5823.55
GLV #1 / PTRO: 690#	5827.65
On/Off tool w/ 1.81 F profile nipple	5829.30
AS1-X pkr set 5k tension (79 degrees)	5835.55
4 jts 2-3/8" 4.7# J-55 eue	5956.93
1.78 R-nipple	5957.85
1 jt 2-3/8" 4.7# J-55 eue	5987.90
1/2 muleshoe (88 degrees) EOT	5991.33

7" 23# shoe @ 6113' MD , 4.5" 11.6# LT @ 5565'
MD / shoe @ 10,594' MD, PBSD @ 10,510' MD,
TVD 5514'
Top perf 6122', bottom perf 10,418'

HOLE SIZE	CASING	CEMENT	VOLUME	CMT TOP
12-1/4"	9-5/8"	245 sx	222 cu.ft.	Surface
8-3/4"	7"	890 sx	1137 cu. ft.	Surface
6-1/8"	4-1/2"	355 sx	552 cu. ft.	TOL 5565'

BS 7/13/17