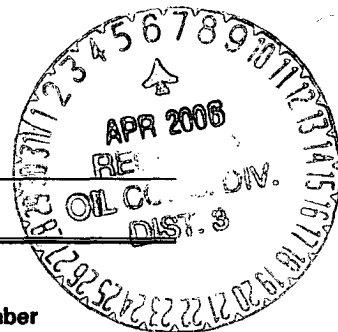


UNITED STATES
DEPARTMENT OF THE INTERIOR
BUREAU OF LAND MANAGEMENT



APPLICATION FOR PERMIT TO DRILL, DEEPEN, OR PLUG BACK

1a. Type of Work Deepening	2005 SEP 30 PM 3 11	5. Lease Number NM-93313
1b. Type of Well GAS	RECEIVED 070 FARMINGTON NM	6. If Indian, All. or Tribe
2. Operator BURLINGTON RESOURCES Oil & Gas Company	7. Unit Agreement Name	
3. Address & Phone No. of Operator PO Box 4289, Farmington, NM 87499 (505) 326-9700	8. Farm or Lease Name Sunray A	
	9. Well Number #2	
4. Location of Well 990' FNL, 890' FEL Latitude 36° 49.81'N, Longitude 107° 51.83'W	10. Field, Pool, Wildcat Blanco Mesaverde /Basin Dakota	
	11. Sec., Twn, Rge, Mer. (NMPM) Sec. 10, T30N, R10W API # 30-045- 309750	
14. Distance in Miles from Nearest Town	12. County San Juan	13. State NM
15. Distance from Proposed Location to Nearest Property or Lease Line 890'		
16. Acres in Lease	17. Acres Assigned to Well E/2 313.52 acres	
18. Distance from Proposed Location to Nearest Well, Drlg. Compl, or Applied for on this Lease		
19. Proposed Depth 7750'	20. Rotary or Cable Tools Rotary	
21. Elevations (DF, FT, GR, Etc.) 6518' GR	22. Approx. Date Work will Start	
23. Proposed Casing and Cementing Program See Operations Plan attached		
24. Authorized by: <u>Joni Clark</u> Regulatory Specialist	<u>9/30/05</u> Date	

PERMIT NO.

APPROVAL DATE

APPROVED BY DJ Montez

TITLE AFM

DATE 4/4/06

Archaeological Report attached

Threatened and Endangered Species Report attached

NOTE: This format is issued in lieu of U.S. BLM Form 3160-3

Title 18 U.S.C. Section 1001, makes it a crime for any person knowingly and willfully to make to any department or agency of the United States any false, fictitious or fraudulent statements or presentations as to any matter within its jurisdiction.

This action is subject to technical and procedural review pursuant to 43 CFR 3165.3 and appeal pursuant to 43 CFR 3165.4

DRILLING OPERATIONS AUTHORIZED ARE
SUBJECT TO COMPLIANCE WITH ATTACHED
"GENERAL REQUIREMENTS".

NMOC

NEW MEXICO OIL CONSERVATION COMMISSION
WELL LOCATION AND ACREAGE DEDICATION PLAT

Form 7-130
Supersedes 6-128
Effective 1-1-65

All distances must be from the outer boundaries of the Section.

Operator Burlington Resources Oil & Gas LP		Lease SUNRAY A		2005 SEP 30 PM 3 11 (NM-0607)		Well No. 2
Unit Letter A	Section 10	Township 30-N	Range 10-W	County SAN JUAN		
Actual For the Location of Well: 990 feet from the NORTH line and 890 feet from the EAST line.						
Ground Level Elev. 6518	Producing Formation Mesaverde/Dakota		Pool Blanco Mesaverde/Basin Dakota		Dedicated Acreage: 313.52 Acres	

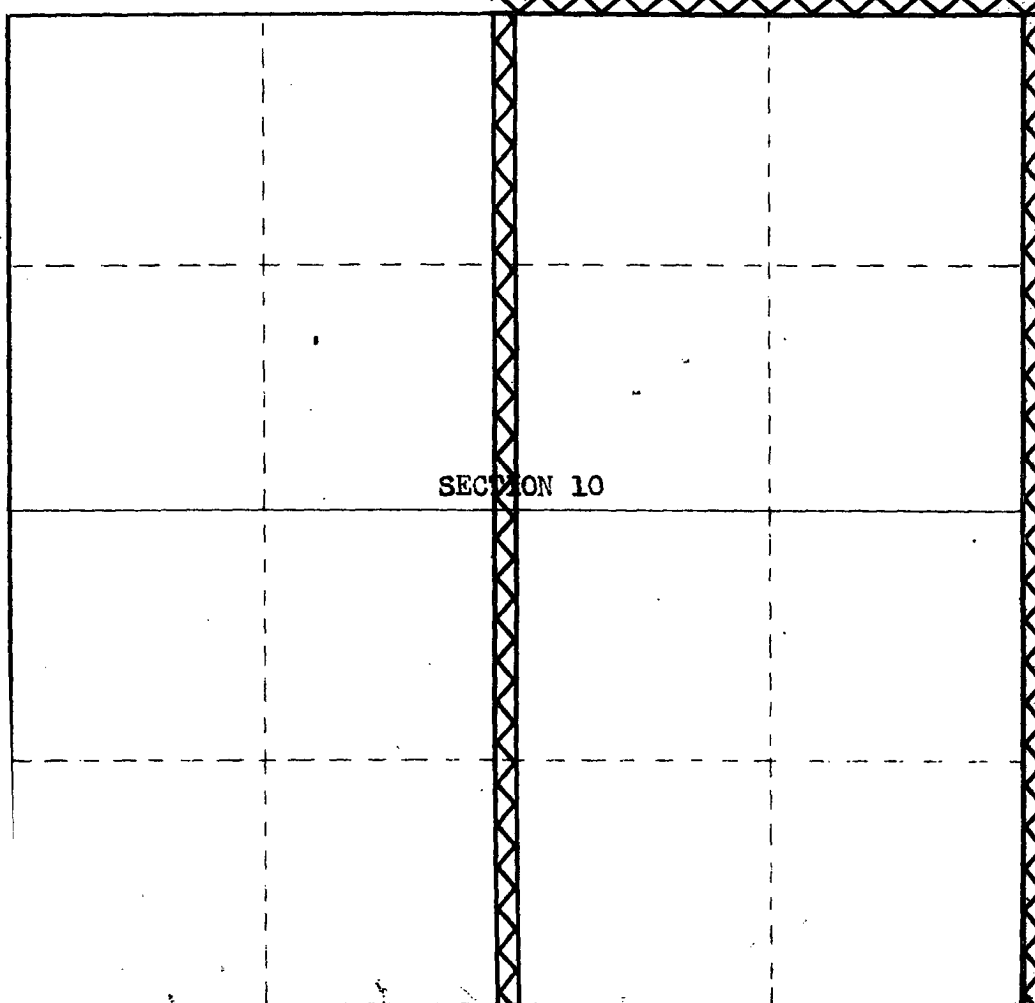
1. Outline the acreage dedicated to the subject well by colored pencil or hachure marks on the plat below.
2. If more than one lease is dedicated to the well, outline each and identify the ownership thereof (both as to working interest and royalty).
3. If more than one lease of different ownership is dedicated to the well, have the interests of all owners been consolidated by communitization, unitization, force-pooling, etc?

☐ Yes ☐ No If answer is "yes," type of consolidation _____

If answer is "no," list the owners and tract descriptions which have actually been consolidated. (Use reverse side of this form if necessary.) _____

No allowable will be assigned to the well until all interests have been consolidated (by communitization, unitization, forced-pooling, or otherwise) or until a non-standard unit, eliminating such interests, has been approved by the Commission.

NOTE: THIS PLAT REISSUED TO SHOW CORRECTED ACREAGE DEDICATION PER NEW SURVEY. 2-9-70



CERTIFICATION

I hereby certify that the information contained herein is true and complete to the best of my knowledge and belief.

Joni Clark
Joni Clark

Position
Sr. Regulatory Specialist

Company

Date

I hereby certify that the well location shown on this plat was plotted from field notes of actual surveys made by me or under my supervision, and that the same is true and correct to the best of my knowledge and belief.

Date Surveyed
FEBRUARY 15, 1955

Registered in books of the New Mexico Oil Conservation Commission

C. O. WALKER

Certificate No.

330 660 990 1320 1650 1980 2310 2640 2970 3300 3630 3960 4290 4620 4950 5280 5610 5940

OPERATIONS PLAN FOR SUNRAY A #2

Well: Sunray A #2
Location: T-30-N, R-10-W, Sect. 10, Unit A; 990' FNL, 890' FEL
San Juan County, NM
Latitude 36° 49.82' Longitude 107° 51.83'

Formation: Blanco Mesaverde and Basin Dakota

<u>Formation Tops:</u>	<u>Top</u>	<u>Bottom</u>	<u>Contents</u>
Surface	San Jose		---
Ojo Alamo	1852'	1961'	aquifer
Kirtland	1961'	2940'	gas
Fruitland	2940'	3180'	gas
Pictured Cliffs	3180'	3374'	gas
Lewis	3374'	3915'	gas
Huerfano Bentonite	3915'	4227'	gas
Chacra	4227'	4698'	gas
Upper Cliff House	4698'	4796'	gas
Massive Cliff House	4796'	4994'	gas
Menefee	4994'	5404'	gas
Massive Point Lookout	5404'	5773'	gas
Mancos	5773'	6693'	gas
Gallup	6693'	7433'	gas
Greenhorn	7433'	7488'	gas
Graneros	7448'	7238'	gas
Two Wells	7538'	7738'	gas
Total Depth	7750'		

Logging program:

Cased hole - CBL-CCL-GR - TD to 4800'

Mud Program:

<u>Interval</u>	<u>Type</u>	<u>Weight</u>	<u>Vis.</u>	<u>Fluid Loss</u>
5380' - 7750'	Air/Nitrogen	n/a	n/a	n/a

Casing Program:

<u>Hole Size</u>	<u>Depth Interval</u>	<u>Csg. Size</u>	<u>Wt.</u>	<u>Grade</u>
4-3/4"	~7750' - 4800'	3-1/2" EUE	9.3#/'	L-80

Tubing Program:

	<u>Tbg. Size</u>	<u>Wt.</u>	<u>Grade</u>
0' - total depth	2-1/16"	3.25#/'	J-55

Operations:

It is intended to deepen the subject well to the Dakota formation by the following procedure:

1. MIRU completion rig. TOOH with tubing.
2. Set retrievable bridge plug at +/- 5350'.
3. Pressure test casing to 1000 psi for 15 minutes. TOOH with bridge plug.
4. Drill out shoe. Drill Dakota formation to approximately 7750' with mud logger to call final total depth. TOOH.
5. TIH with 3-1/2" EUE pipe and set at total depth.
6. Cement with 50 sxs of type III cement (1.39 yield, 14.5 ppg). WOC. Run CBL. TOC @ 5230'.
7. Perforate and fracture stimulate the Dakota and Mesaverde formations. Flow back well. Perform well tests.
8. Set composite plug 50' above top Mesaverde perforation.
9. Chemical cut 3-1/2" casing at +/- 4800'.
10. Drill out composite plug above the Mesaverde. Clean out to PBTD.
11. Land 2-1/16" IJ tubing.
12. RDMO rig. Return well to production as a commingled MV/DK producer.

BOP Specifications, Wellhead and Tests:

Surface to Total Depth:

2" nominal, 2000 psi minimum choke manifold (Reference Figure #3).

Completion Operations:

7 1/16" 2000 psi double gate BOP stack (Reference Figure #4). After nipple-up prior to completion, pipe rams will be tested to 2000 psi for 15 minutes.

Wellhead:

9 5/8" x 7" x 4 1/2" x 2 1/16" x 2000 psi tree assembly.

General Information:

- Pipe rams will be actuated once each day and blind rams will be actuated once each trip to test proper functioning.
- An upper kelly cock valve with handle available and drill string valves to fit each drill string will be available on the rig floors at all times.
- All BOP tests and drills will be recorded in daily drilling reports.
- Blind and pipe rams will be equipped with hand wheels.

Cementing:

3-1/2" Production Liner

Cement to cover minimum of 150' into 5-1/2" casing shoe. Minimum TOC @ 5230'. 50 sxs type III cement (1.39 yield, 14.5 ppg). WOC a minimum of 18 hrs prior to completing.

Special Drilling Operations (Gas/Mist Drilling):

The following equipment will be operational while gas/mist drilling:

- An anchored blooie line will be utilized to discharge all cuttings and circulating medium to the blow pit a minimum of 100' from the wellhead.
- Compressors will be located a minimum of 100' from the wellhead in the opposite direction from the blooie line.
- Engines will have spark arresters or water-cooled exhaust.
- Deduster equipment will be utilized.
- The rotating head will be properly lubricated and maintained.
- A float valve will be utilized above the bit.
- Mud circulating equipment, water, and mud materials will be sufficient to maintain control of the well.

Additional Information:

- The Mesaverde and/or Dakota formations will be completed and commingled if both formations are completed.
- No abnormal temperatures or hazards are anticipated.
- Anticipated pore pressures are as follows:
Dakota 1850 psi

Angela Ibara
Sr. Staff Engineer

9/20/05
Date

BURLINGTON RESOURCES

Pertinent Data Sheet Sunray A #2

GENERAL INFORMATION:	
LOCATION: 990' FNL, 890' FEL Unit A, Section 10, T30N, R10W San Juan County, NM	DATE: 2/8/2005 ELEVATION: GL: 6,518' KB: 6,528'
FIELD: Blanco Mesaverde Current Proposed	API: 30-045-09750
PBTD: 5,590' 7,748'	LATITUDE: 36 deg 49.82 min
TD: 5,590' 7,750'	LONGITUDE: 107 deg 51.83 min
SPUD DATE: 3/2/55	COMPLETION DATE: 3/26/55

CASING RECORD:								
HOLE SIZE	CSG SIZE	WEIGHT (#s)	GRADE	DEPTH SET	STAGE	DVT	CMT TOP	SX CMT
13-7/8"	9-5/8"	25.4#	ASW	171'			circ to surf	125 sxs
8-3/4"	7"	23#/20#	J-55	4,765'			2785' TS	500 sxs
6-1/4"	5-1/2"	15.5#	J-55	4607' - 5380'			4620' TS	75 sxs
4-3/4"	3-1/2" EUE	9.3#	L-80	4800'-7750'			5,230'	50 sxs

TUBING RECORD:							
TBG SIZE	WEIGHT (#s)	GRADE	# JTS	DEPTH SET	SN	BOTTOM HOLE ASSEMBLY	
(Proposed)							
2-1/16"	3.25	J-55 LJ		TBD	TBD		
(Current)							
2-3/8"	4.7#	J-55	172	5,351'	5,321'		

FORMATION TOPS							
Ojo Alamo	1852'		Chacra	4227'		Gallup	6693'
Kirtland	1961'		Cliffhouse	4698'		Greenhorn	7433'
Fruitland	2940'		Manefee	4994'		Graneros	7488'
Pictured Cliffs	3180'		Point Lookout	5404'		Two Wells	7538'
Lewis	3374'		Mancos	5773'		Morrison	
Huerfano Bent.	3915'						

*300 ft above Huerfano Bentonite is the legal top of Mesaverde in New Mexico (North of Chacra Line)

LOGGING RECORD:			
Cased Hole Previously Run:	Temp	Open Hole Previously run:	Electric, Microlog

STIMULATION (proposed)						
Stage:	Perfs	Formation:	Sand Vol:	Fluid Vol	Rate:	Type:
(Proposed)						
1	TBD	Dakota	40,000#			Slickwater
2	TBD	PLO/LMN	100,000#			60Q foamed slickwater
(Current)						
1	OH 5380'-5590'	PLO/LMN	12,800#	12,900 gal		Oil
Behind Liner	OH 4766'-5015'	Wet Cliff House (behind pipe)	14,100#	12,250 gal		Oil

WORKOVER HISTORY:	
Jun-76	Perfed 1 0.25" hole in tubing at 5362'
Jun-98	Replaced bad joints in tubing and cleaned up open hole.
Lary Byars, Chad Dunn	

CONTACT INFORMATION:						
		OFFICE	CELL	PAGER	HOME	FAX
Production Engineer	Angela Ibara	328-9813	320-1070		328-9184	328-9583
Senior Rig Supervisor	John Angvick	328-9840	320-2420		632-9501	328-9583

Sunray A #2

990' FNL, 890' FEL

Unit A, Section 10, T30N, R10W

San Juan County, NM

LAT: 36 deg 49.82 min

LONG: 107 deg 51.83 min

GL = 6,518'

KB = 6,528'

Current Wellbore Diagram

Surface Casing:

9-5/8" 25.4# ASW
Set @ 171'
TOC @ circ to surf

Intermediate Casing:

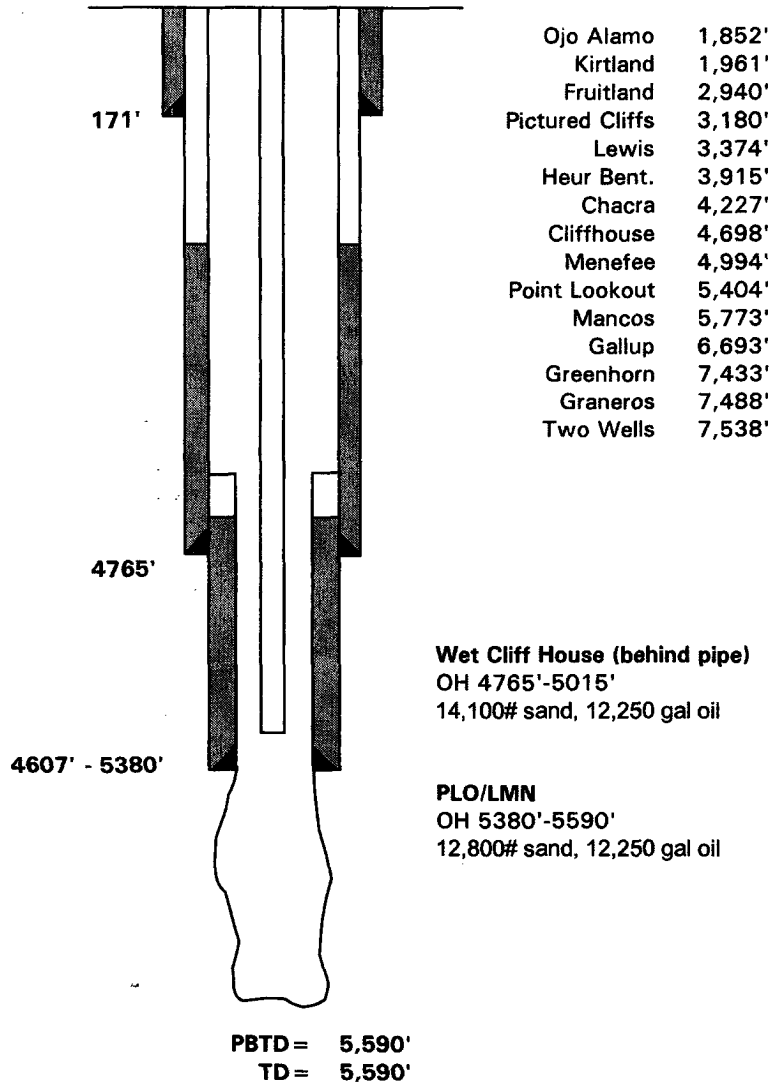
7" 23#/20# J-55
Set @ 4,765' 500 sxs
TOC @ 2785' TS

Tubing:

2-3/8" 4.7# J-55
Set @ 5351
SN @ 5321

Production Liner:

5-1/2" 15.5# J-55
Set @ 4607' - 5380'
TOC @ 4620' TS



Sunray A #2

990' FNL, 890' FEL

Unit A, Section 10, T30N, R10W

San Juan County, NM

LAT: 36 deg 49.82 min

LONG: 107 deg 51.83 min

GL = 6,518'

KB = 6,528'

Proposed Wellbore Diagram

Surface Casing:

9-5/8" 25.4# ASW
Set @ 171'
TOC @ circ to surf

Intermediate Casing:

7" 23#/20# J-55
Set @ 4,765' 500 sxs
TOC @ 2785' TS

Tubing:

2-1/16" 3.25 J-55 IJ
Set @ TBD
SN @ TBD

Production Liner:

5-1/2" 15.5# J-55
Set @ 4607' - 5380'
TOC @ 4620' TS

Proposed Production Liner:

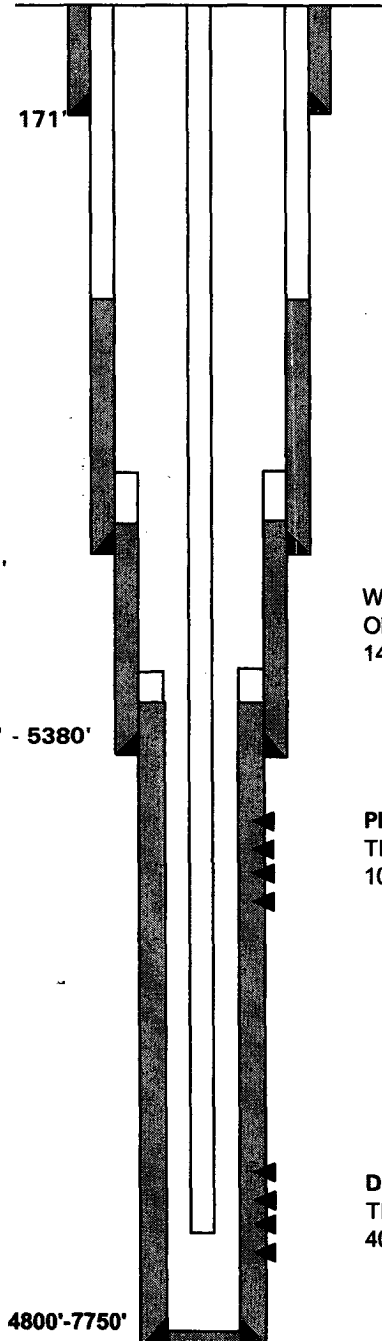
3-1/2" EUE 9.3# L-80
Set @ 4800' - 7750'
TOC @ 5,230'

Ojo Alamo 1,852'
Kirtland 1,961'
Fruitland 2,940'
Pictured Cliffs 3,180'
Lewis 3,374'
Heur Bent. 3,915'
Chacra 4,227'
Cliffhouse 4,698'
Menefee 4,994'
Point Lookout 5,404'
Mancos 5,773'
Gallup 6,693'
Greenhorn 7,433'
Graneros 7,488'
Two Wells 7,538'

Wet Cliff House (behind pipe)
OH 4765'-5015'
14,100# sand, 12,250 gal oil

PLO/LMN
TBD
100,000# 20/40, 60Q foamed slickwater

Dakota
TBD
40,000# TLC, slickwater



PBTD = 7,748'
TD = 7,750'

Burlington Resources

Prashanth Reddy
2000 p.d. System

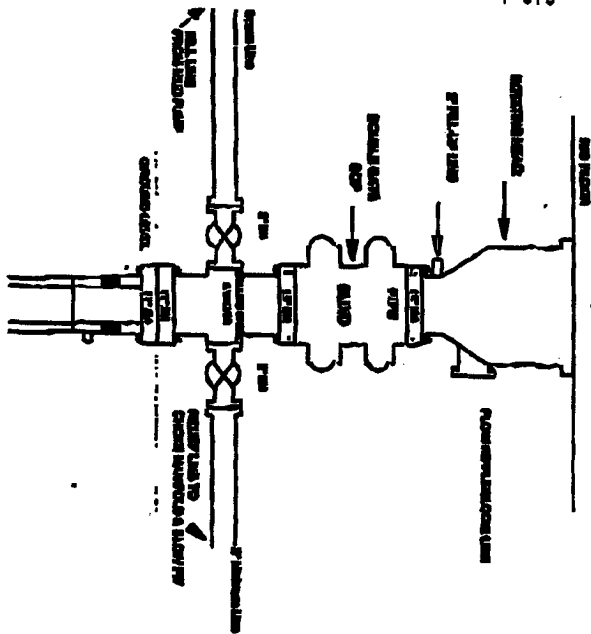


Figure 101

EOC installations from Rockwool Ceiling Panels to Tektite Duct, 11" Rains for Noncomb, EOC and working pressure ducts, also give EOC to be equipped with *blast* pans and plug frames. A AEC and working ducts to help of non-pressure. All EOC equipment is EOC and working pressure.

BURLINGTON RESOURCES

Drilling Rig Choke Manifold Configuration 2000 psi System

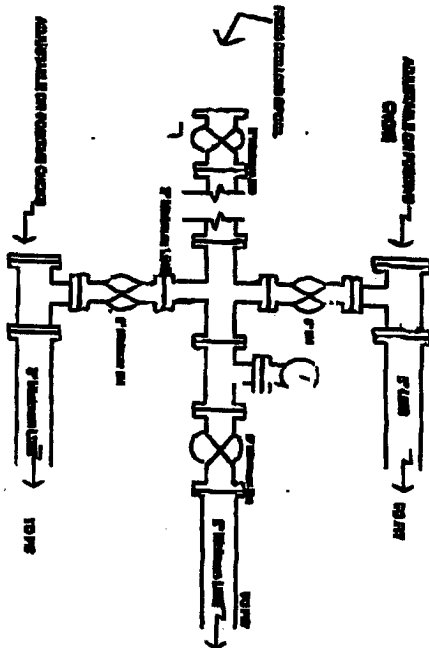
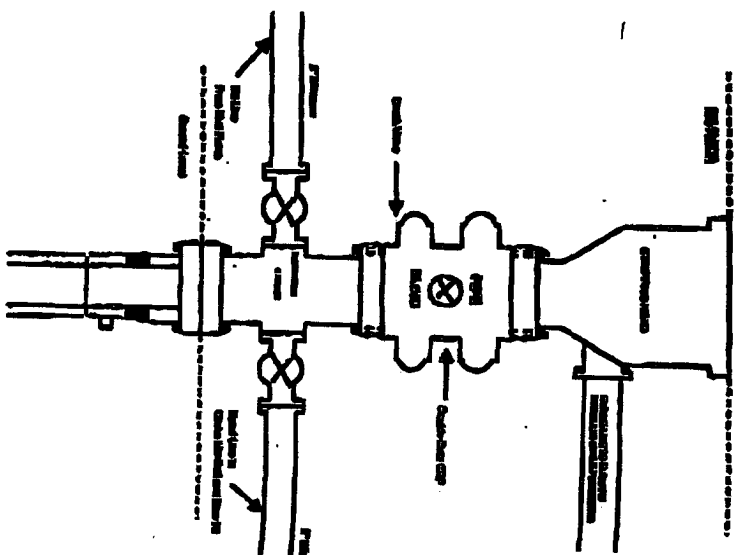


Figure 83

Chubb provided location from Surface Casting Poles to Total Cops. 2,000ps working pressure equipment with two electric.

**Completion/Workover Rig
BOP Configuration
2,000 psi System**



Figures 1-3

Minimum GDP Installation for all Compulsory Highway Questions, 7-1-1978 Item, 2000 gal minimum working pressure double gate SGP to be equipped with blind and gips flange. A stepping stand to be installed on the top of the SGP. All SGP equipment to 2000 psi working pressure or greater including 5500 psi stepping flange.

4-20-01

4-25-01