

RECEIVED

070 FARMINGT

15

The following, completed in accordance with the requirements of Onshore Oil and Gas Order No. 1, must be attached to this form:

- | | |
|---|---|
| 1. Well plat certified by a registered surveyor. | 4. Bond to cover the operations unless covered by an existing bond on file (see Item 20 above). |
| 2. A Drilling Plan. | 5. Operator certification |
| 3 A Surface Use Plan (if the location is on National Forest System Lands, the SUPO must be filed with the appropriate Forest Service office). | 6. Such other site specific information and/or plans as may be required by the BLM~ |

Approved by (Signature)	Name (Printed/Typed)	Date
[Signature]		4/21/06
Title	Office	
AEM	FEO	

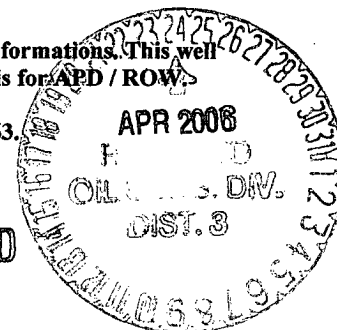
Title 18 U.S.C. Section 1001 and Title 43 U.S.C. Section 1212, make it a crime for any person knowingly and willfully to make to any department or agency of the United States any false, fictitious or fraudulent statements or representations as to any matter within its jurisdiction.

ConocoPhillips Company proposes to drill a vertical wellbore to the Blanco Mesaverde / Basin Dakota formations. This well will be drilled and equipped in accordance with the attachments submitted herewith. This application is for APD / ROW.

This well will be downhole commingled pursuant to the terms and conditions outlined in Order R-11363.

This action is subject to technical and procedural review pursuant to 43 CFR 3165.3 and appeal pursuant to 43 CFR 3165.4

NR000000



District I
PO Box 1980, Hobbs, NM 88241-1980

District II
PO Drawer DD, Artesia, NM 88211-0719

District III
1000 Rio Brazos Rd., Aztec, NM 87410

District IV
PO Box 2088, Santa Fe, NM 87504-2088

State of New Mexico
Energy, Minerals & Natural Resources Department

OIL CONSERVATION DIVISION
PO Box 2088
Santa Fe, NM 87504-2088

Form C-102

Revised February 21, 1994

Instructions on back

Submit to Appropriate District Office

State Lease - 4 Copies

Fee Lease - 3 Copies

RECEIVED

☐ AMENDED REPORT

070 FARMINGTON NM

WELL LOCATION AND ACREAGE DEDICATION PLAT

*API Number 30-039-29849		*Pool Code 72319 / 71599		*Pool Name BLANCO MESAVERDE / BASIN DAKOTA	
*Property Code 31328		*Property Name SAN JUAN 31-6 UNIT			*Well Number 20G
*GRID No. 217817		*Operator Name CONOCOPHILLIPS COMPANY			*Elevation 6245'


¹⁰ Surface Location

UL or lot no. P	Section 3	Township 30N	Range 6W	Lot Idn	Feet from the 1055	North/South line SOUTH	Feet from the 1300	East/West line EAST	County RIO ARriba
--------------------	--------------	-----------------	-------------	---------	-----------------------	---------------------------	-----------------------	------------------------	----------------------

¹¹ Bottom Hole Location If Different From Surface

UL or lot no.	Section	Township	Range	Lot Idn	Feet from the	North/South line	Feet from the	East/West line	County
¹² Dedicated Acres 320.32 Acres - (E/2)					¹³ Joint or Infill	¹⁴ Consolidation Code	¹⁵ Order No.		

NO ALLOWABLE WILL BE ASSIGNED TO THIS COMPLETION UNTIL ALL INTERESTS HAVE BEEN CONSOLIDATED OR A NON-STANDARD UNIT HAS BEEN APPROVED BY THE DIVISION

16	1321.32'	LOT 8	5280.00'	LOT 7	LOT 6	LOT 5	1326.60'	1320.00'	2640.00'	5270.76'	1055'	1300'	LAT: 36°50.2345' N LONG: 107°26.7022' W DATUM: NAD27	¹⁷ OPERATOR CERTIFICATION I hereby certify that the information contained herein is true and complete to the best of my knowledge and belief <i>Virgil E. Chavez</i> Signature Virgil E. Chavez Printed Name Projects & Operations Lead Title <i>February 13, 2006</i> Date	
														¹⁸ SURVEYOR CERTIFICATION I hereby certify that the well location shown on this plat was plotted from field notes of actual surveys made by me or under my supervision, and that the same is true and correct to the best of my belief. Survey Date: DECEMBER 20, 2005 Signature and Seal of Professional Surveyor  <i>JASON C. EDWARDS</i> Certificate Number 15269	

Submit 3 Copies To Appropriate District Office

District I

1625 N. French Dr., Hobbs, NM 88240

District II

1301 W. Grand Ave., Artesia, NM 88210

District III

1000 Rio Brazos Rd., Aztec, NM 87410

District IV

1220 S. St. Francis Dr., Santa Fe, NM 87505

State of New Mexico
Energy, Minerals and Natural Resources

OIL CONSERVATION DIVISION
1220 South St. Francis Dr.
Santa Fe, NM 87505

Form C-103
May 27, 2004

WELL API NO.

30-039-29849

5. Indicate Type of Lease

STATE ☐ FEE ☐

6. State Oil & Gas Lease No.

7. Lease Name or Unit Agreement Name

SAN JUAN 31-6 UNIT

8. Well Number 20G

9. OGRID Number 217817

10. Pool name or Wildcat

Blanco Mesquite / Basin Dakota

SUNDRY NOTICES AND REPORTS ON WELLS

(DO NOT USE THIS FORM FOR PROPOSALS TO DRILL OR TO DEEPEN OR PLUG BACK TO A DIFFERENT RESERVOIR. USE "APPLICATION FOR PERMIT" (FORM C-101) FOR SUCH PROPOSALS.)

1. Type of Well: Oil Well ☐ Gas Well ☒ Other

2. Name of Operator
ConocoPhillips Company

3. Address of Operator
4001 Penbrook, Odessa, TX 79762

4. Well Location

Unit Letter P 1055 feet from the SOUTH line and 1300 feet from the EAST line
Section 3 Township 30N Range 6W NMPM RIO ARRIBA County

11. Elevation (Show whether DR, RKB, RT, GR, etc.)
6245' GL

Pit or Below-grade Tank Application ☒ Closure ☐

Pit type DRILL Depth to Groundwater 60' Distance from nearest fresh water well 13,508' Distance from nearest surface water 5200'
Liner Thickness: 12 mil Below-Grade Tank: Volume 4400 bbls; Construction Material SYNTHETIC

12. Check Appropriate Box to Indicate Nature of Notice, Report or Other Data

NOTICE OF INTENTION TO:

PERFORM REMEDIAL WORK ☐ PLUG AND ABANDON ☐
TEMPORARILY ABANDON ☐ CHANGE PLANS ☐
PULL OR ALTER CASING ☐ MULTIPLE COMPL ☐

OTHER: ☐

SUBSEQUENT REPORT OF:

REMEDIAL WORK ☐ ALTERING CASING ☐
COMMENCE DRILLING OPNS. ☐ P AND A ☐
CASING/CEMENT JOB ☐

OTHER: ☐

13. Describe proposed or completed operations. (Clearly state all pertinent details, and give pertinent dates, including estimated date of starting any proposed work). SEE RULE 1103. For Multiple Completions: Attach wellbore diagram of proposed completion or recompletion.

The pit will be constructed and closed in accordance with Rule 50 and as per COPC June 2005 General Pit Plan on file with the NMOCD. See the attached diagram that details the location of the pit in reference to the proposed wellhead. The drill pit will be lined. The drill pit will be closed after the well has been completed

I hereby certify that the information above is true and complete to the best of my knowledge and belief. I further certify that any pit or below-grade tank has been/will be constructed or closed according to NMOCD guidelines ☒ a general permit ☐ or an (attached) alternative OCD-approved plan ☐

SIGNATURE Peggy James

TITLE Senior Associate

DATE 3/15/2006

Type or print name

E-mail address peggy.s.james@conocophillips.com:

Telephone No.: (432)368-1230

For State Use Only

APPROVED BY:

Conditions of Approval (if any):

TITLE

DEPUTY OIL & GAS INSPECTOR, DIST. 4

DATE

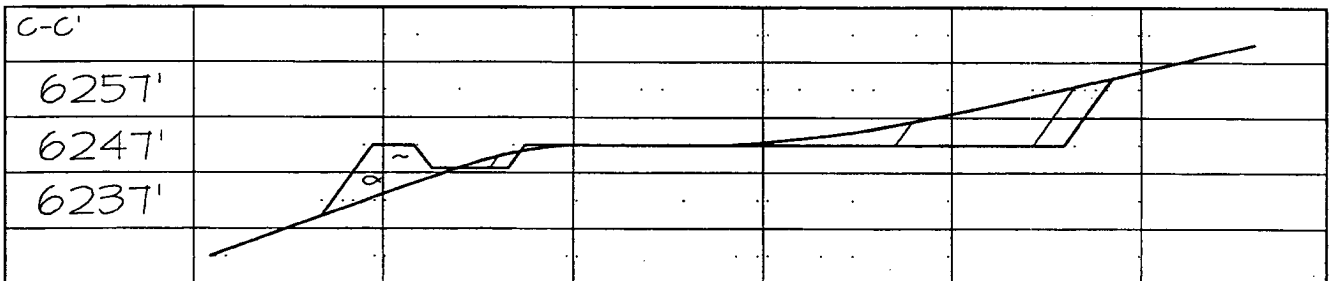
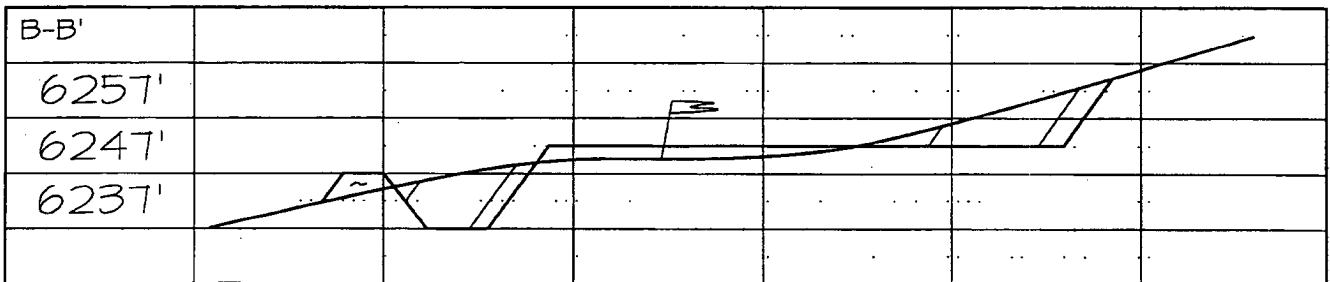
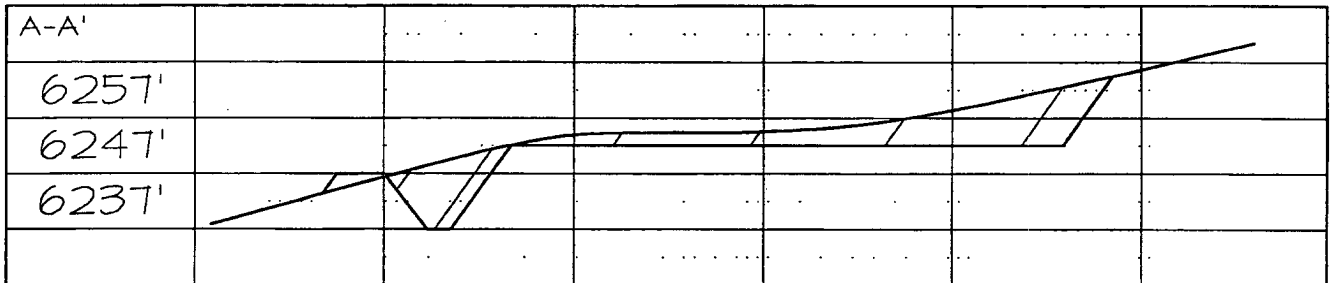
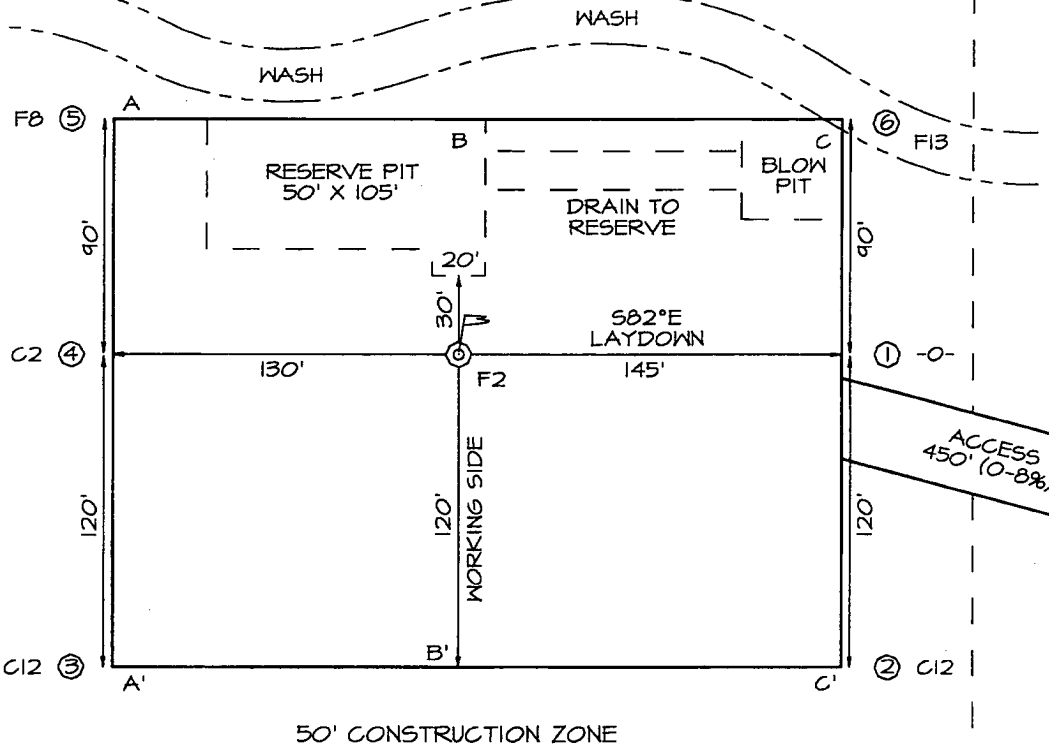
APR 24 2006

CONOCOPHILLIPS COMPANY SAN JUAN 31-6 UNIT #20G
1055' FSL & 1300' FEL, SECTION 3, T30N, R6W, NMPM
RIO ARriba COUNTY, NEW MEXICO ELEVATION: 6245'

LATITUDE: 36.83724° N
LONGITUDE: 107.44504° W
 DATUM: NAD1927

PLAT NOTE:

SURFACE OWNER
 Bureau of Land
 Management



PROJECT PROPOSAL - New Drill / Sidetrack

San Juan Business Unit

SAN JUAN 31-6 20G

Lease:		AFE #:		AFE \$:	
Field Name: 31-6		Rig: H&P 283		State: NM	County: RIO ARRIBA
Geoscientist: Glaser, Terry J		Phone: (832)486-2332		Prod. Engineer: Pusch, Jennye	
Res. Engineer: Pena, David Fernando		Phone: 832-486-2328		Phone: 832-486-2345	
Proj. Field Lead: Fransen, Eric E.		Phone:			
Primary Objective (Zones):					
Zone	Zone Name				
R20002	MESAVERDE(R20002)				
R20076	DAKOTA(R20076)				

Location: Surface		Datum Code: NAD 27		Straight Hole	
Latitude: 36.837240	Longitude: -107.445040	X:	Y:	Section: 3	Range: 6W
Footage X: 1300 FEL		Footage Y: 1055 FSL		Elevation: 6245 (FT)	Township: 30N

Tolerance:	
Location Type: Summer Only	Start Date (Est.):
Completion Date:	Date In Operation:
Formation Data: Assume KB = 6261 Units = FT	

Formation Call & Casing Points	Depth (TVD in Ft)	SS (Ft)	Depletion (Yes/No)	BHP (PSIG)	BHT	Remarks
Surface Casing	216	6045	<input type="checkbox"/>			13-1/2 hole. 9 5/8" 32.3 ppf, H-40, STC casing. Circulate cement to surface.
NCMT	1236	5025	<input type="checkbox"/>			
CJAM	2241	4020	<input type="checkbox"/>			Possible water flows.
KRLD	2411	3850	<input type="checkbox"/>			
FRLD	2791	3470	<input type="checkbox"/>			Possible gas.
PCCF	3161	3100	<input type="checkbox"/>			
LEWS	3361	2900	<input type="checkbox"/>			
Intermediate Casing	3461	2800	<input type="checkbox"/>			8 3/4" Hole. 7", 20 ppf, J-55, STC Casing. Circulate cement to surface.
CHRA	4311	1950	<input type="checkbox"/>			
CLFH	5151	1110	<input type="checkbox"/>			Gas; possibly wet
MENF	5211	1050	<input type="checkbox"/>			Gas.
PTLK	5436	825	<input type="checkbox"/>			Gas.
CLLP	6881	-620	<input type="checkbox"/>			Gas. Possibly wet.
CRHN	7466	-1205	<input type="checkbox"/>			Gas possible, highly fractured
CBBO	7646	-1385	<input type="checkbox"/>			Gas
TOTAL DEPTH DK	7816	-1555	<input type="checkbox"/>			6 1/4" Hole. 4 1/2", 11.6 ppf, N-80, LTC casing. Circulate cement a minimum of 100' inside the previous casing string. No open hole logs. Cased hole TDT with GR to surface.

Reference Wells:		
Reference Type	Well Name	Comments

PROJECT PROPOSAL - New Drill / Sidetrack

SAN JUAN 31-6 20G

Logging Program:Intermediate Logs: ☐ Log only if show ☐ GR/ILD ☐ Triple ComboTD Logs: ☐ Triple Combo ☐ Dipmeter ☐ RFT ☐ Sonic ☐ VSP ☒ TDT**Additional Information:**

Log Type	Stage	From (Ft)	To (Ft)	Tool Type/Name	Remarks
----------	-------	-----------	---------	----------------	---------

Comments:

San Juan 31-6 # 20G
Halliburton Cementing Program

SURFACE CASING :

Drill Bit Diameter	13.5"	
Casing Outside Diameter	9.625"	Casing Inside Diam. 9.001"
Casing Weight	32.3	ppf
Casing Grade	H-40	
Shoe Depth	235'	
Cement Yield	1.21	cuft/sk
Cement Density	15.6	lb/gal
Excess Cement	125%	
Cement Required	214	sx

SHOE 235 ', 9.625 ", 32.3 ppf, H-40 STC

INTERMEDIATE CASING :

Drill Bit Diameter	8.75"	
Casing Outside Diameter	7"	Casing Inside Diam. 6.456"
Casing Weight	20	ppf
Casing Grade	J-55	
Shoe Depth	3461'	
Lead Cement Yield	2.88	cuft/sk
Lead Cement Density	11.5	lb/gal
Lead Cement Excess	150%	
Lead Cement Required	345	sx
Tail Cement Length	692.2'	
Tail Cement Yield	1.33	cuft/sk
Tail Cement Density	13.5	lb/gal
Tail Cement Excess	150%	
Tail Cement Required	203	sx

SHOE 3461 ', 7 ", 20 ppf, J-55 STC

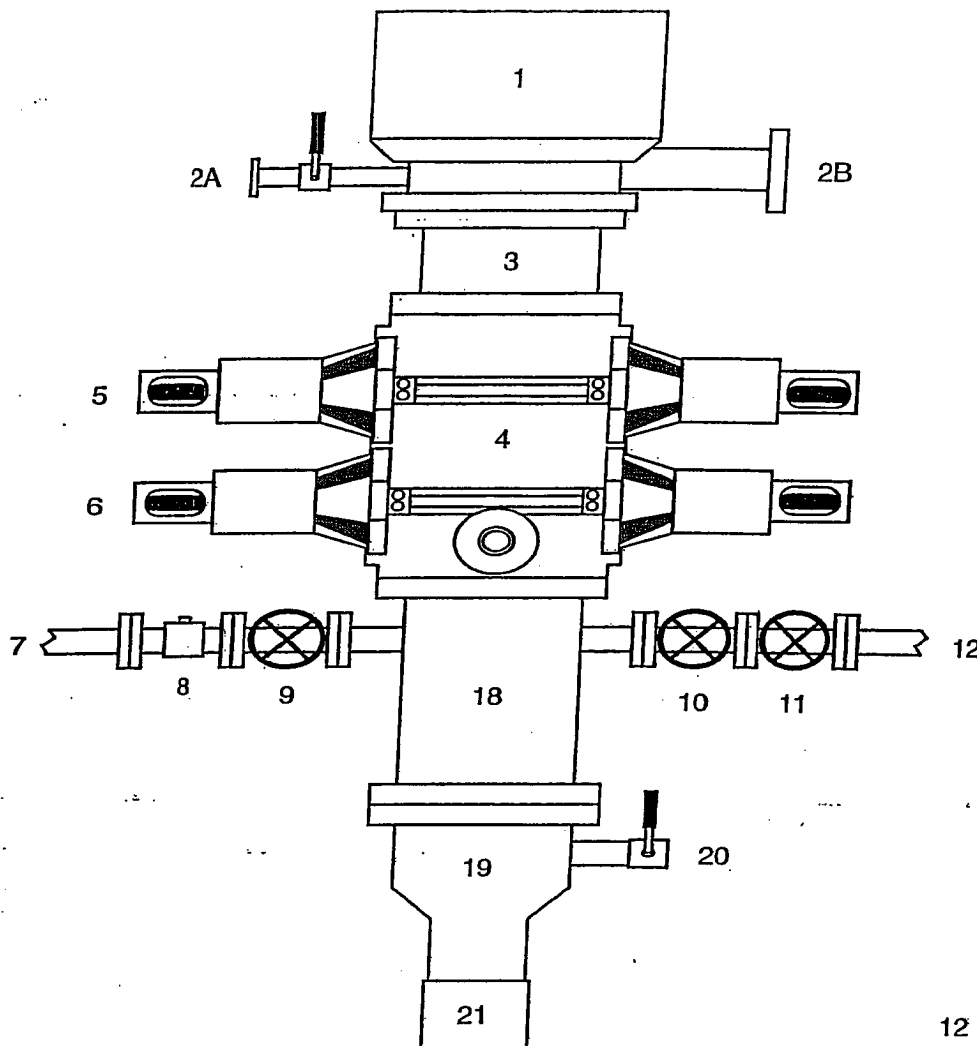
PRODUCTION CASING :

Drill Bit Diameter	6.25"	
Casing Outside Diameter	4.5"	Casing Inside Diam. 4.000"
Casing Weight	11.6	ppf
Casing Grade	N-80	
Top of Cement	3261'	200' inside intermediate casing
Shoe Depth	7816'	
Cement Yield	1.45	cuft/sk
Cement Density	13.1	lb/gal
Cement Excess	50%	
Cement Required	479	sx

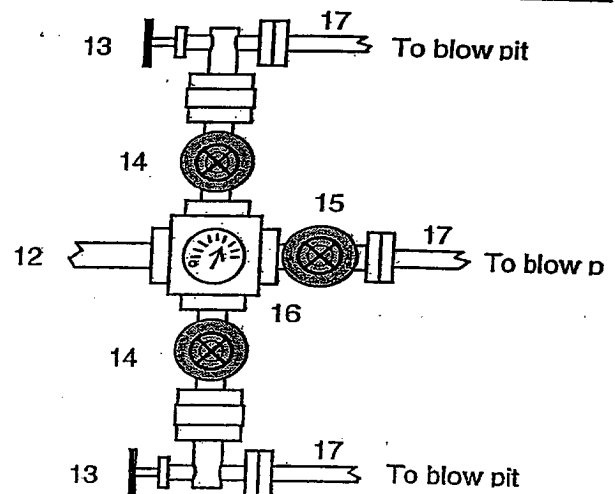
SHOE 7816 ', 4.5 ", 11.6 ppf, N-80 LTC

BLOWOUT PREVENTER ARRANGEMENT & PROGRAM

For Drilling to Intermediate Casing Point & Setting 7" Intermediate Casing



1. Rotating Head
- 2A. Fill-up Line & valve
- 2B. Flowline
3. Spacer Spool
4. Double Ram BOP (11", 3000 psi)
5. Pipe Rams
6. Blind Rams
7. Kill Line
8. Kill Line Check Valve
9. Kill Line Valve
10. Inner Choke Line Valve (3")
11. Outer Choke Line Valve (3")
12. Choke Line (3")
13. Variable Choke
14. Choke Line Valve (2")
15. Panic Line Valve (3")
16. Choke Manifold Pressure Gauge
17. Choke Line (2")
18. Mud Cross Spacer Spool
19. Casing Head "A" Section
20. Casing Head "A" Section 2" Valve
21. 9 5/8" Casing Collar

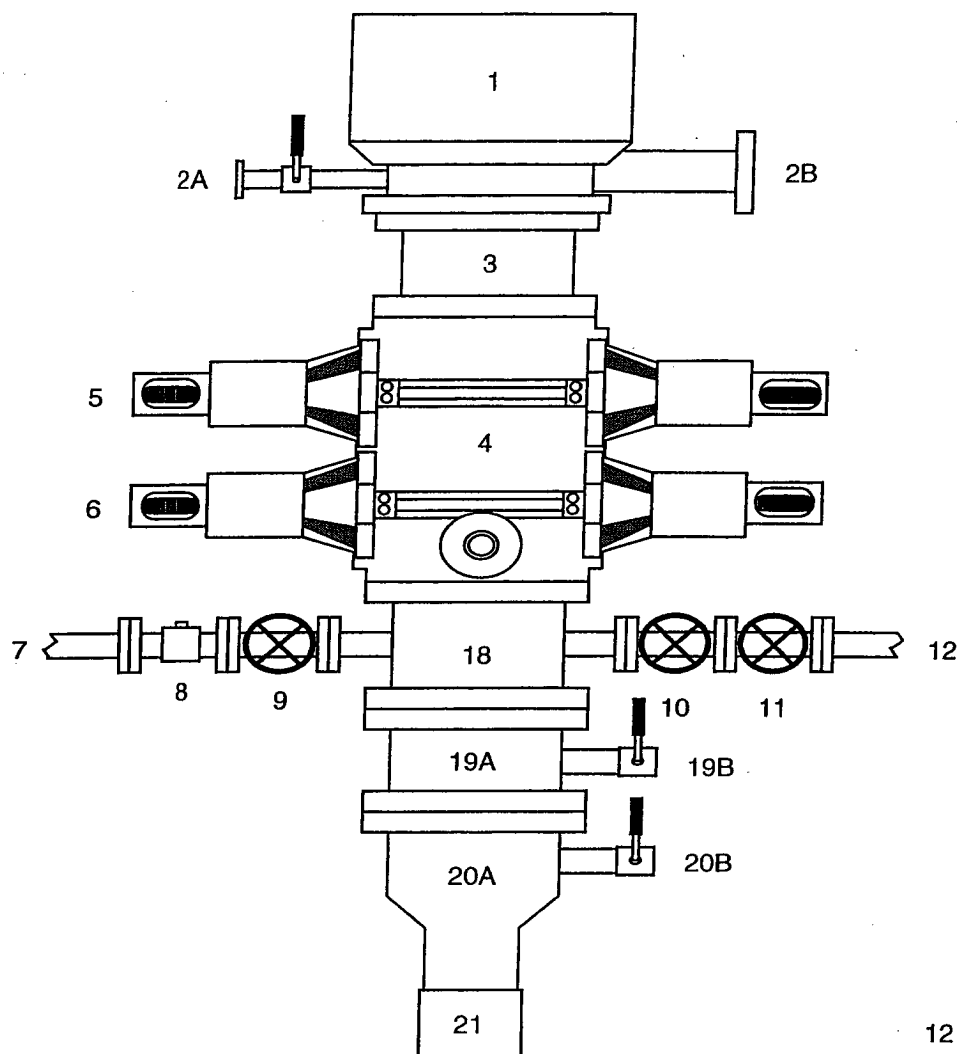


A 12-1/4" hole will be drilled to approximately 220' and the 9-5/8" surface casing will be run and cemented. The Casing Head "A" Section will be screwed onto the 9-5/8" surface casing stub. The BOP will be installed on the Casing Head "A" Section. A test plug will be set in the wellhead and the pipe rams and choke manifold will be tested to 200 psi to 300 psi (low pressure test) for 10 minutes and to 1000 psi (high pressure test) for 10 minutes. Then the test plug will be removed, and the 9-5/8" casing will be pressure tested against closed blind rams to 200 psi to 300 psi for 10 minutes and to 1000 psi for 30 minutes (this value is one 44% of the minimum internal yield pressure of the 9-5/8" casing). (Note: per regulatory requirements we will wait on cement at least 8 hrs after placement before testing the 9-5/8" surface casing). Then an 8-3/4" hole will be drilled to intermediate casing point and 7" intermediate casing will be run and cemented.

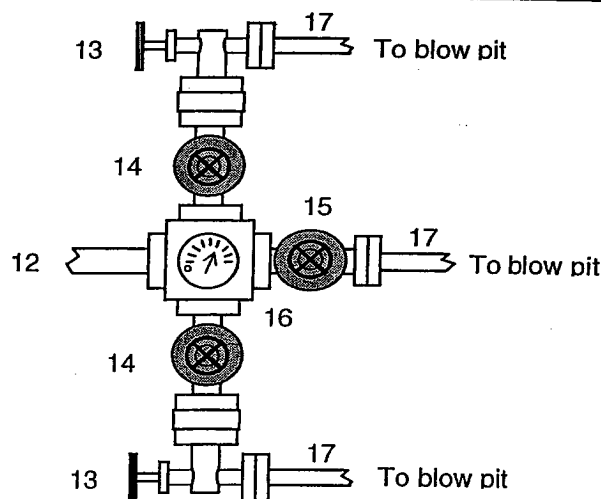
In addition to the equipment in the above diagram the following equipment will comprise the BOP system:

BLOWOUT PREVENTER ARRANGEMENT & PROGRAM

For Drilling to TD and Setting 4.5 inch Casing



1. Rotating Head
- 2A. Fill-up Line & valve
- 2B. Bleeie Line (for Air Drilling)
3. Spacer Spool
4. Double Ram BOP (11", 3000 psi)
5. Pipe Rams
6. Blind Rams
7. Kill Line
8. Kill Line Check Valve
9. Kill Line Valve
10. Inner Choke Line Valve (3")
11. Outer Choke Line Valve (3")
12. Choke Line (3")
13. Variable Choke
14. Choke Line Valve (2")
15. Panic Line Valve (3")
16. Choke Manifold Pressure Gauge
17. Choke Line (2")
18. Mud Cross Spacer Spool
- 19A Csg Spool "B" Section (11", 3M)
- 19B "B" Section Csg Valve (2", 3M)
- 20A Csg Head "A" Section (11", 3M)
- 20B "A" Section Csg Valve (2", 3M)
21. 9 5/8" Casing Collar



After the 7" intermediate casing has been run and cemented, the Casing Spool ("B" Section) will be installed on the wellhead ("A" Section) and the BOP will be installed on the Casing Spool. A test plug will be set in the wellhead and the pipe rams, blind rams, and choke manifold will be tested to 200 psi to 300 psi (low pressure test) for 10 minutes and to 3000 psi (high pressure test) for 10 minutes. Then the test plug will be removed and the 7" casing will be pressure tested against closed blind rams to 200 psi to 300 psi for 10 minutes and to 1800 psi for 30 minutes - this test pressure is 48% of the minimum internal yield strength of 3740 psi for the 7", 20#, J-55, STC casing. Then we will air drill the 6-1/4" hole to TD and run and cement the 4-1/2" casing.

In addition to the equipment in the above diagram the following equipment will comprise the BOP system:

1. Upper Kelly cock Valve with handle
2. Stab-in TIW valve for all drillstrings in use

Property : SAN JUAN 31-6 UNIT Well #: 20G

Surface Location:

Unit: P Section: 3 Township: 30N Range: 6W

County: RIO ARRIBA State: **New Mexico**

Footage: 1055 from the SOUTH line, 1300 from the EAST line.

CATHODIC PROTECTION

ConocoPhillips (COP) proposes to drill a cathodic protection deep well groundbed for the subject well. COP will drill a hole vertically at the surface large enough to accommodate 20 feet of 8 inch diameter PVC pipe for surface casing to assist in further drilling and loading. Casing may be cemented in place for stability if needed. COP will drill a 6-7/8" hole to an anticipated minimum depth of 300' (maximum depth of 500'). Cement plugs will not be used unless more than one water zone is encountered. Prior drilling history for the area indicates only one zone to that depth. If more than one water zone is encountered, notification will be made and details of cement and casing will be provided.

All drilling activity will remain on the existing well pad and a Farmington based company will be doing the drilling for ConocoPhillips.