

DISTRICT I  
1625 N. French Dr., Hobbs, N.M. 88240  
Phone: (575) 393-6161 Fax: (575) 393-0720

DISTRICT II  
811 S. First St., Artesia, N.M. 88210  
Phone: (575) 748-1283 Fax: (575) 748-9720

DISTRICT III  
1000 Rio Brazos Rd., Aztec, N.M. 87410  
Phone: (505) 334-6176 Fax: (505) 334-6170

DISTRICT IV  
1220 S. St. Francis Dr., Santa Fe, NM 87505  
Phone: (505) 476-3460 Fax: (505) 476-3462

State of New Mexico  
Energy, Minerals & Natural Resources Department

## OIL CONSERVATION DIVISION

1220 South St. Francis Dr.  
Santa Fe, NM 87505

AS DRILLED PLAT

Form C-102  
Revised August 1, 2011  
Submit one copy to appropriate  
District Office

☒ AMENDED REPORT

### WELL LOCATION AND ACREAGE DEDICATION PLAT

<sup>1</sup> API Number <b>30-045-29363</b>	<sup>2</sup> Pool Code <b>71629</b>	<sup>3</sup> Pool Name <b>BASIN FRUITLAND COAL LATERAL 1</b>
<sup>4</sup> Property Code <b>318864</b>	<sup>5</sup> Property Name <b>ALLISON UNIT</b>	<sup>6</sup> Well Number <b>145 H</b>
<sup>7</sup> OGRID No. <b>372171</b>	<sup>8</sup> Operator Name <b>HILCORP ENERGY COMPANY</b>	<sup>9</sup> Elevation <b>6519'</b>

#### <sup>10</sup> Surface Location

UL or lot no. <b>M</b>	Section <b>7</b>	Township <b>32-N</b>	Range <b>6-W</b>	Lot Idn <b>7</b>	Feet from the <b>880</b>	North/South line <b>SOUTH</b>	Feet from the <b>925</b>	East/West line <b>WEST</b>	County <b>SAN JUAN</b>
---------------------------	---------------------	-------------------------	---------------------	---------------------	-----------------------------	----------------------------------	-----------------------------	-------------------------------	---------------------------

#### <sup>11</sup> Bottom Hole Location If Different From Surface

UL or lot no. <b>B</b>	Section <b>13</b>	Township <b>32-N</b>	Range <b>7-W</b>	Lot Idn <b>209</b>	Feet from the <b>209</b>	North/South line <b>NORTH</b>	Feet from the <b>1779</b>	East/West line <b>EAST</b>	County <b>SAN JUAN</b>
---------------------------	----------------------	-------------------------	---------------------	-----------------------	-----------------------------	----------------------------------	------------------------------	-------------------------------	---------------------------

<sup>12</sup> Dedicated Acres <b>PROJECT AREA 637.04 ACRES</b> <b>HSU=957.04</b>	<sup>13</sup> Joint or Infill	<sup>14</sup> Consolidation Code	<sup>15</sup> Order No. <b>R-8768-C</b>
----------------------------------------------------------------------------------------	-------------------------------	----------------------------------	--------------------------------------------

NO ALLOWABLE WILL BE ASSIGNED TO THIS COMPLETION UNTIL ALL INTERESTS HAVE BEEN CONSOLIDATED  
OR A NON-STANDARD UNIT HAS BEEN APPROVED BY THE DIVISION

NMOC

SEP 14 2018

DISTRICT III

#### SURFACE

LATITUDE: 36°59.3992' N  
LONGITUDE: 107°30.3216' W  
NAD27

LATITUDE: 36.989992° N  
LONGITUDE: 107.505966° W  
NAD83

#### FIRST TAKE

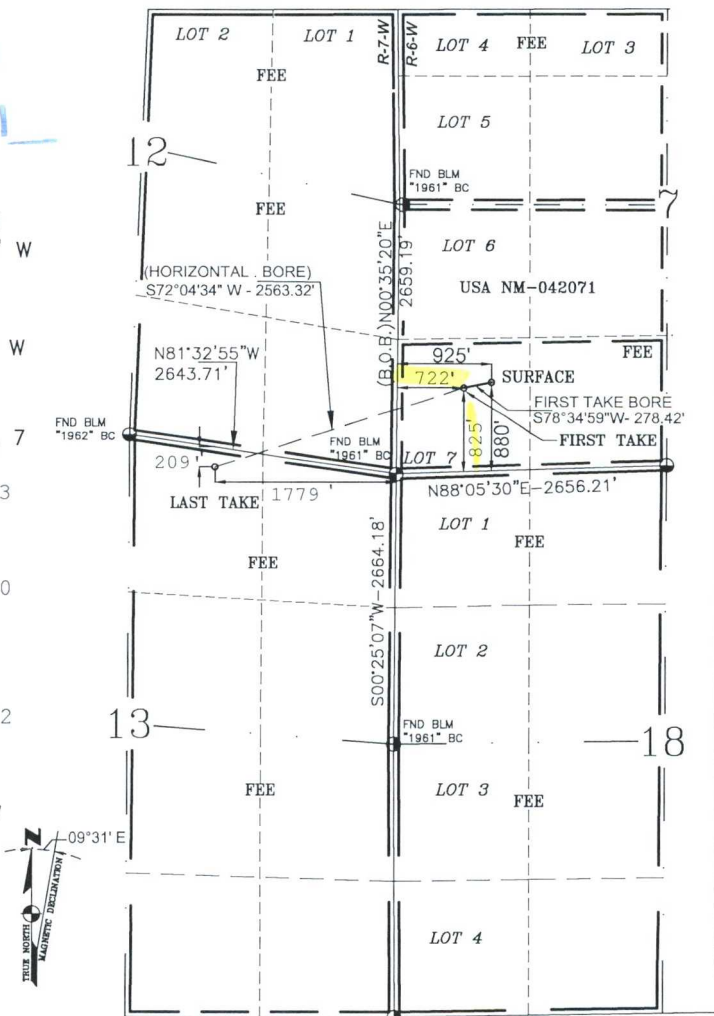
**825' FSL 722' FWL SEC. 7**  
LATITUDE: 36.989840  
LONGITUDE: -107.506603  
NAD27

LATITUDE: 36.989845  
LONGITUDE: -107.507210  
NAD83

#### LAST TAKE

LATITUDE: 36.9876392  
LONGITUDE: -107.5146502  
NAD27

LATITUDE: 36.987644  
LONGITUDE: -107.515257  
NAD83



#### 17 OPERATOR CERTIFICATION

I hereby certify that the information contained herein is true and complete to the best of my knowledge and belief, and that this organization either owns a working interest or unleased mineral interest in the land including the proposed bottom hole location or has a right to drill this well at this location pursuant to a contract with an owner of such a mineral or a working interest, or to a voluntary pooling agreement or a compulsory pooling order heretofore entered by the division.

*Amanda Walker*  
Signature Date 9/13/2018

Amanda Walker

Printed Name

mwalker@hilcorp.com

E-mail Address

#### 18 SURVEYOR CERTIFICATION

I hereby certify that the well location shown on this plat was plotted from field notes of actual surveys made by me or under my supervision, and that the same is true and correct to the best of my belief.

Original C-102 Attached

GLEN W. RUSSELL

Certificate Number

15703

AV